



# City Council

## Agenda Item

**Subject:** Presentation by Watertown Police Department on 2021 Annual Report.  
**Meeting:** City Council - Mar 21 2022  
**From:** Tim Toomey, Chief of Police

---

**SUGGESTED MOTION:**

No motion needed.

---

**STAFF REFERENCE(S):**

Connie Cutler

---

**ATTACHMENT(S):**

[Watertown Police Department Annual Report 2021 FINAL](#)



# Watertown Police Department Annual Report



**2021**

## ***Contents of 2021 Annual Report***

	<b>Page</b>
Message from Chief Tim Toomey	3
Department's Mission, Vision, & Core Values	5
Law Enforcement Oath of Honor & Code of Ethics	6
Organizational Structure & Command Staff	7
Annual Crime Statistics & Historical Trends	9
Calls for Service	10
Adult Arrest	12
Juvenile Arrests	15
Traffic Citations	18
Monthly Statistical Report for Each Division	20

## Message from the Chief



Watertown continues to be a safe place to visit, live, work, and raise a family. 2021 was a year of transition, change, and progress. I took over as Watertown's Police Chief in April of 2021 after Chief Lee McPeck retired. It is an honor and a privilege that holds great responsibility. I can only strive to live up to the legacy of my predecessors.

As your Chief of Police, I am committed to the philosophy of Community Policing while serving Watertown with transparency and accountability. I am proud of the incredible men and women of the WPD who work tirelessly to provide the best possible public safety and police services to our community. They are truly dedicated to pursuing excellence as they serve the citizens of Watertown.

Sir Robert Peel is considered the founding father of modern law enforcement. His policing principles are as crucial today as they were in the 1800s. Peel's seventh principle states "that the police are the public and that the public are the police, the police being only members of the public who are paid to give full-time attention to duties which are incumbent on every citizen in the interests of community welfare and existence."

As members of this community, the men and women of the WPD work hard not only in public safety but also in community engagement and problem-solving. In 2021, the WPD created new and innovative programs like "To Protect and Serve Ice Cream" and "Coloring with a Cop" to better engage with Watertown's youth. The Mental Health Officer and Community Service Officer positions were created to help address local issues. A civilian 911 manager position was created to better serve our Communication Officers and community. Advanced technologies were deployed to enhance our ability to be more efficient in responding to crime and people in crisis. These are just a few examples of the many innovative and progressive steps the WPD has taken in 2021 to best serve Watertown.

The WPD is fortunate to have strong community partnerships and support. We recognize that public trust is earned and we are dedicated to working hard to maintain it. The information contained within this annual report is an accurate representation of the crimes and incidents reported to, and investigated by, the Watertown Police Department from January 1, 2021, through December 31, 2021. I am pleased to announce that because of the WPD's strong community partnerships and dedicated personnel, most crime is trending down considerably in our community.

The 911 Center provides 911 services to six counties. The center received approximately 67,814 calls in 2021. 13,816 of those calls were to 911. 23,415 were calls for service to the WPD. On average, these 911 calls were answered in ten seconds or less 95% of the time.

Adult arrests were the lowest they have been in 7 years. They were down 14% from 2020 and 19% from the 5-year average. Assaults and Intentional Damage to Property were the lowest they have been in 8 years. Domestic Aggravated Assaults were down 45% from 2020 and 49% from the 5-year average. These are just a few examples of crime trending down in Watertown.

Although vehicle accidents were up slightly from last year, they were down 8% from the 5-year average. There were no fatalities investigated by the WPD and the number of injured people was down 6% from 2020. This is only the third year out of the last 8 that accidents were under 700. The five-year average is 729. We attribute the reduction to weather, data-led traffic enforcement, technology, and the use of Highway Safety grants.

A total of 4,960 traffic stops were initiated resulting in 1,707 traffic citations and 4,138 warning citations issued. This demonstrates that our officers are working hard and using good officer discretion.

There was a 14% decrease in total drugs arrests from 2020. The changing Marijuana laws can be attributed to most of the decrease. The WPD is committed to staying abreast of the changing laws so we can best serve the community. Methamphetamines and Fentanyl are at the top of the list for risk to our community.

Unfortunately, DUI arrests are up considerably. We saw a 29% increase from 2020 and a 21% increase from the 5-year average. There were 283 adult arrests and 8 juvenile arrests for DUI in 2021. The WPD has obtained a Department of Highway Safety grant to increase enforcement and education regarding DUIs with a goal to reduce those numbers.

Finally, an area of great concern is the mental health crisis facing our community and across the nation. Tragically, Watertown lost 12 members of our community to suicide. This is the most in one year in recorded history. We will continue to work with our community partners on this front to reduce those numbers and to connect people in need to resources.

Under the new City Manager form of government, Watertown is shining bright. There are great things happening all over our great community. With growth and development comes change. I want to assure you that the men and women of the Watertown Police Department stand ready to serve. We look forward to continuing our strong community partnerships and building additional ones in 2022.

Respectfully,

Tim Toomey  
Chief of Police

The Watertown Police Department's Mission Statement, Vision Statement, and Core Values serve as a philosophical framework to guide employees while serving the public.

## Mission Statement

The mission of the Watertown Police Department is to provide superior law enforcement services to our community while making Watertown a safe place to visit, live, work, and raise a family.

## Vision Statement

The vision of the Watertown Police Department is to be a beacon of excellence while adhering to our core values.

## Core Values

**Integrity:** We will adhere to the highest code of professionalism, honesty, and ethical conduct at all times in all our actions.

**Respect:** We will treat all people with respect, dignity, and fairness regardless of circumstances.

**Courage:** We will act bravely when threatened with danger, persevere when confronted with adversity, stand up for what is right even in the face of popular opposition, and have the moral fortitude to hold ourselves and each other accountable.

**Selfless Service:** We will put the needs of the community above our own without thought of recognition or personal gain.

**Community:** We are dedicated to public service through teamwork and partnerships to enhance the quality of life for all while safeguarding the public's trust.

(Promulgated December 1<sup>st</sup>, 2021)

The WPD adheres to the International Association of Chiefs of Police (IACP) Oath of Honor and Law Enforcement Code of Ethics to further serve as a guide for employees in their professional and personal activities.

## Oath of Honor

On my honor, I will never betray my badge, my integrity, my character, or the public trust. I will always have the courage to hold myself and others accountable for our actions. I will always uphold the constitution, my community, and the department I serve.

## Law Enforcement Code of Ethics

As a Law Enforcement Officer, my fundamental duty is to serve mankind; to safeguard lives and property; to protect the innocent against deception, the weak against oppression or intimidation, and the peaceful against violence or disorder; and to respect the Constitutional rights of all persons to liberty, equality and justice.

I will keep my private life unsullied as an example to all; maintain courageous calm in the face of danger, scorn or ridicule; develop self-restraint; and be constantly mindful of the welfare of others. Honest in thought and deed in both my personal and official life, I will be exemplary in obeying the laws of the land and the regulations of my department. Whatever I see or hear of a confidential nature or that is confided to me in my official capacity will be kept ever secret unless revelation is necessary in the performance of my duty.

I will never act officiously or permit personal feelings, prejudices, animosities or friendships to influence my decisions. With no compromise for crime and with relentless prosecution of criminal, I will enforce the law courteously and appropriately without fear or favor, malice or ill will, never employing unnecessary force or violence and never accepting gratuities.

I recognize the badge of my office as a symbol of public faith, and I accept it as a public trust to be held so long as I am true to the ethics of the police service. I will constantly strive to achieve these objectives and ideals, dedicating myself before God to my chosen profession...law enforcement.

## ***WPD Command and Supervisory Staff***

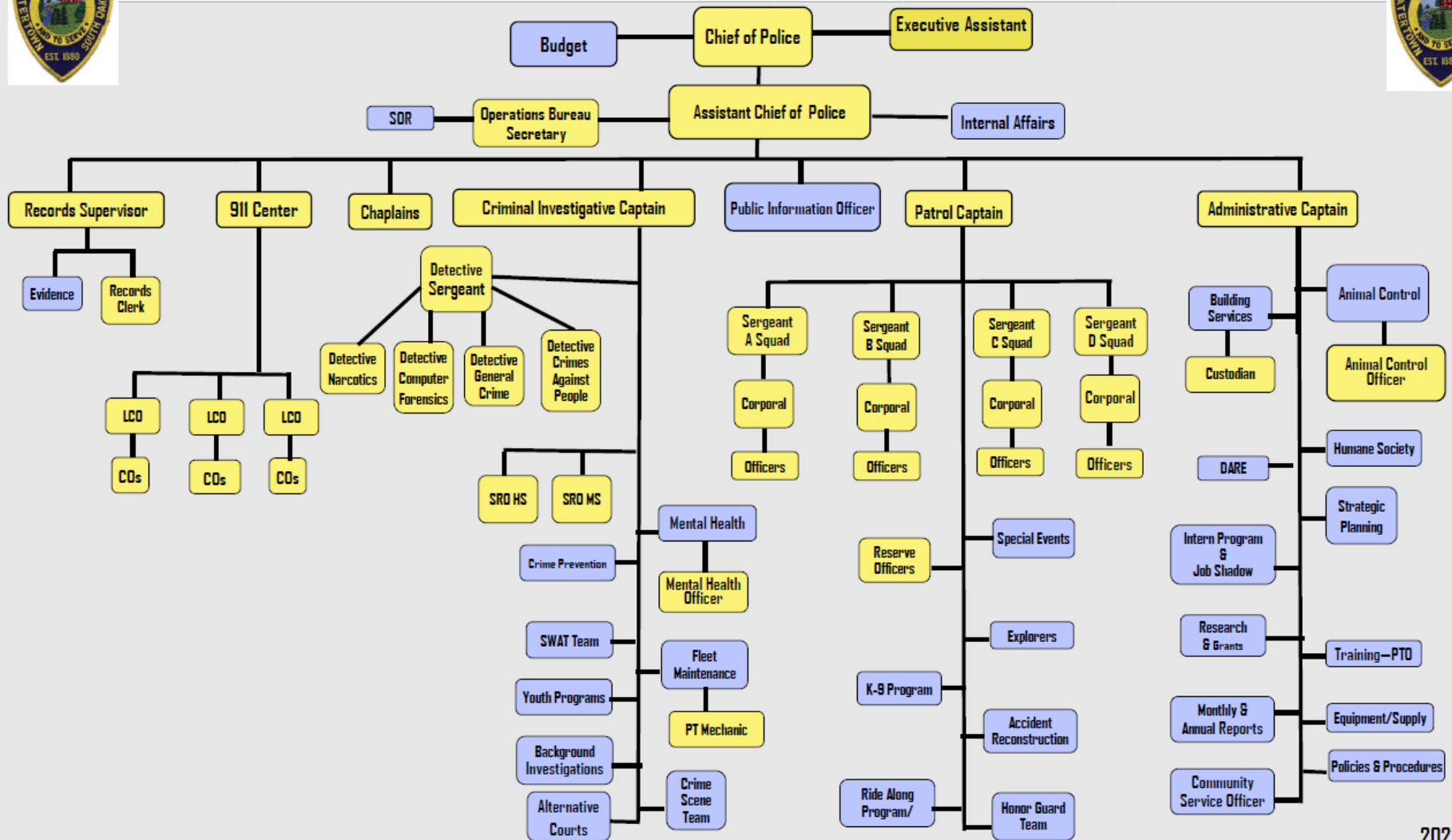
The WPD Chief of Police is the chief law enforcement officer in the City. The Chief's authority is derived through appointment by the City Manager by and with the approval of the City Council, and holds the office for the term of appointment unless sooner removed by the City Manager. All police officers are under the control of the City Manager and Chief and are subject to their order. The WPD command staff consists of the Chief of Police, Assistant Chief of Police, Reserve Chief of Police and three Captains who oversee three divisions; Investigative, Patrol, and Administrative. Additional supervisory staff includes five Sergeants, four of whom supervise patrol squads, and the fifth supervises detectives.

## ***WPD Organizational Chart***

The WPD consists of a formal organizational structure with clearly defined components so that the chain of command and functional divisions are clearly understood by all personnel. It is necessary that all personnel be sufficiently familiar with the structure, functions, activities, and services associated with the operation of the WPD in order to assist citizens of, and visitors to, the City of Watertown by ensuring that their inquiries or problems are referred to the proper organizational component.



# Watertown Police Department Organization Chart



# **Crime Statistics & Historical Trends**

The following section contains statistical information about calls for service, crimes, arrests, and other incidents reported to, and investigated by, the Watertown Police Department from January 1<sup>st</sup>, through December 31<sup>st</sup>, 2021. In order to identify trends and to give the viewer a historical reference, the same statistical information for the previous years has been included.



# Watertown Police Department



## Calls for Service

	2014	2015	2016	2017	2018	2019	2020	2021	(2017-2021) 5 Year Average	2020 to 2021 Percent Change	2021 to 5 Year Average Percent Change
<b>ACCIDENTS</b>											
Total Reported	763	738	737	694	771	866	639	674	729	5%	-8%
Reported to State	409	388	369	369	420	451	346	421	401	22%	5%
Hit and Runs	139	118	140	138	141	196	153	131	152	-14%	-14%
Hit & Runs Solved	23	24	21	22	26	35	39	32	31	-18%	4%
Car-Pedestrian	7	6	4	3	8	4	5	0	4	-100%	-100%
Car-Bicycle	4	3	0	4	0	5	1	2	2	100%	-17%
Injured People	119	144	121	135	93	106	107	101	108	-6%	-7%
Fatalities	1	0	1	0	1	3	1	0	1	-100%	-100%
<b>COMPLAINTS</b>											
Animal Comp	1131	1353	1469	1691	1597	1705	1620	1581	1639	-2%	-4%
Parking Comp	558	770	666	680	805	693	516	526	644	2%	-18%
Gun Complaints	6	16	22	14	16	21	32	19	20	-41%	-7%
Unwanted Persons	214	198	196	153	200	175	166	116	162	-30%	-28%
Disorderly Conduct	256	366	358	352	300	251	261	243	281	-7%	-14%
Loud Party Comp	57	25	16	15	13	13	4	2	9	-50%	-79%
Loud Music Comp	95	102	103	81	88	82	120	85	91	-29%	-7%
Loud Noise Comp	100	88	99	83	88	99	159	132	112	-17%	18%
Junk Yrd/Lts/Steet	192	131	149	175	151	213	181	167	177	-8%	-6%
Suspicious Comp	468	536	511	488	466	351	381	371	411	-3%	-10%
Peddling Comp	21	30	35	36	31	28	20	22	27	10%	-20%
Traffic Complaints	820	938	968	909	919	960	997	974	952	-2%	2%
Snowmobile Comp	6	0	0	2	1	0	0	0	1	0%	-100%
Hazardous Matl Cmplts	29	15	14	24	14	15	9	16	16	78%	3%
Fireworks Comp	65	55	62	105	46	75	60	55	68	-8%	-19%
Harassment Comp	9	10	4	5	2	9	9	9	7	0%	32%
Trespassing Comp	67	126	95	85	128	175	127	125	128	-2%	-2%
Tobacco Ban/Compliance	0	3	31	1	0	21	0	45	13	-	236%
4 Wheel/ATV Comp	10	17	7	7	6	5	8	6	6	-25%	-6%
<b>INVESTIGATIONS</b>											
Family Disturbances	229	214	160	230	249	199	207	210	219	1%	-4%
Domestic Assaults	125	141	146	164	136	139	164	131	147	-20%	-11%
Assaults (non domestic)	130	159	168	132	138	121	119	112	124	-6%	-10%
Fights	40	39	15	15	27	20	38	39	28	3%	40%
Homicide	0	0	0	1	1	0	0	0	0	0%	-100%
Burglaries (Total)	<b>80</b>	<b>55</b>	<b>62</b>	<b>73</b>	<b>40</b>	<b>55</b>	<b>58</b>	<b>39</b>	53	-33%	-26%
<i>Commercial</i>	17	11	23	15	9	8	13	9	11	-31%	-17%
<i>Residential</i>	63	44	39	58	31	47	45	30	42	-33%	-29%
Robberies	2	5	4	2	2	2	2	1	2	-50%	-44%
Child Abuse/Neglect	34	32	35	37	36	39	33	34	36	3%	-5%
Sexual Contact	23	35	38	47	52	46	67	47	52	-30%	-9%
Indecent Exposure	3	4	7	2	0	2	6	1	2	-83%	-55%
Rapes	10	16	6	12	14	11	11	7	11	-36%	-36%
Threats/Intimidation	76	67	83	82	74	60	63	66	69	5%	-4%
Kidnap/Abduction (unfd)	0	0	4	3	5	6	1	3	4	200%	-17%
Suicides	3	3	1	0	2	6	6	12	5	100%	131%
Suicide Threats	61	72	64	73	105	136	150	123	117	-18%	5%
Suicide Attempts	29	38	28	14	38	50	49	48	40	-2%	21%
Protective Custody (Total)	<b>173</b>	<b>204</b>	<b>183</b>	<b>189</b>	<b>189</b>	<b>200</b>	<b>201</b>	<b>140</b>	184	-30%	-24%
<i>Drunk</i>	56	72	70	79	83	70	59	36	65	-39%	-45%
<i>Mental</i>	117	132	113	110	106	130	142	104	118	-27%	-12%
Juv. Protective Custody (Total)	<b>8</b>	<b>11</b>	<b>10</b>	<b>14</b>	<b>14</b>	<b>17</b>	<b>17</b>	<b>25</b>	17	47%	44%
<i>Drunk</i>	0	0	0	0	0	0	0	0	0	-	-
<i>Mental</i>	8	11	10	14	14	17	17	25	17	47%	44%



# Watertown Police Department



## Calls for Service Continued

	2014	2015	2016	2017	2018	2019	2020	2021	(2017-2021) 5 Year Average	2020 to 2021 Percent Change	2021 to 5 Year Average Percent Change
<b>INVESTIGATIONS-CONT.</b>											
Prowlers/Windowpeekers	8	7	3	12	8	3	7	11	8	57%	34%
Missing People	6	4	6	10	31	17	22	9	18	-59%	-49%
<i>Found</i>	6	4	6	10	31	17	22	9	18	-59%	-49%
Harassing Phone Calls	247	229	224	153	146	136	111	98	129	-12%	-24%
Dog/Cat Bites	40	40	38	62	48	44	47	51	50	9%	1%
Other Bites	0	4	4	2	1	2	0	4	2	-	122%
Thefts (incl shoplifting)	356	507	471	347	309	293	415	280	329	-33%	-15%
Vandalisms	175	194	176	126	145	166	161	125	145	-22%	-14%
Stolen Vehicles	21	23	29	14	29	16	34	34	25	0%	34%
<i>Recovered</i>	19	23	29	13	26	16	30	32	23	7%	37%
Forgeries	16	19	13	14	11	5	7	11	10	57%	15%
Fraud/False Pretense/Swindling	97	86	93	103	105	97	116	120	108	3%	11%
Bad Checks/No Account	4	3	11	2	3	0	3	1	2	-67%	-44%
Arson	2	1	2	0	0	0	3	0	1	-100%	-100%
Pornography	1	6	3	8	6	12	16	18	12	13%	50%
Prostitution	1	0	0	0	1	1	0	0	0	-	-100%
Bomb Threat	0	0	2	1	3	1	0	0	1	-	-100%
Embezzlement	3	7	8	7	10	5	4	3	6	-25%	-48%
Gambling	0	0	0	0	1	0	0	0	0	-	-100%
Counterfeit	4	5	2	1	10	13	4	3	6	-25%	-52%
<b>ASSISTS</b>											
Window/Open Doors	124	62	67	80	55	49	66	64	63	-3%	2%
Sex Offender Registrations	129	143	115	111	117	123	166	153	134	-8%	14%
Alarms (Officers Responding)	391	460	456	415	424	422	373	430	413	15%	4%
Warrants Served	134	186	112	97	88	103	90	118	99	31%	19%
Agency Assists	503	588	921	889	1006	1075	762	881	923	16%	-5%
Citizen Assists	3470	3623	3376	3343	3187	3284	2951	3128	3179	6%	-2%
Escorts (Total)	422	417	413	407	408	380	288	193	335	-33%	-42%
<i>Funeral</i>	152	154	151	131	151	160	183	152	155	-17%	-2%
<i>City Hall</i>	247	247	241	243	235	184	85	28	155	-67%	-82%
<i>Other</i>	23	16	21	33	22	36	20	13	25	-35%	-48%
Lost & Found	302	411	467	437	427	327	371	330	378	-11%	-13%
Truants/School Assists	290	232	279	194	167	233	231	365	238	58%	53%
Stop, Walk, and Talk	728	281	409	334	290	298	135	249	261	84%	-5%
Airport Security Checks	821	582	235	618	603	532	531	784	614	48%	28%
Business Checks	845	81	29	125	60	67	289	85	125	-71%	-32%
Bar Walk Throughs	237	117	54	92	70	91	10	21	57	110%	-63%
Veterans Assists	19	10	17	11	19	8	4	7	10	75%	-29%
Adopt a School	74	64	75	130	110	102	23	60	85	161%	-29%
<b>COURT FINES</b>											
City Fines (Dollars)	14,230	15,203	21,843	24,119	12,905	20,293	17,591	20,495	19081	17%	7%
Parking Tickets (Dollars)	13,199	22,269	32,275	14,005	35,880	44,210	14,385	14,530	24602	1%	-41%
<b>Total Calls For Service*</b>	<b>21,850</b>	<b>22,347</b>	<b>21,825</b>	<b>22,316</b>	<b>22,106</b>	<b>24,676</b>	<b>23,494</b>	<b>24,483</b>	<b>23415</b>	<b>4%</b>	<b>5%</b>
<b>Calls Service By District</b>											
NE	6872	7128	7202	7112	7391	8767	7820	8110	7840	4%	3%
SW	3866	3853	3729	3991	3755	3830	3660	3987	3845	9%	4%
SE	6161	6250	6144	6162	6110	6710	6260	6587	6366	5%	3%
NW	4115	4229	3860	4203	3973	4284	4358	4648	4293	7%	8%
Lake	515	501	502	514	503	679	973	745	683	-23%	9%
Other	321	386	388	334	374	406	423	406	389	-4%	4%



# Adult Arrests





	2014	2015	2016	2017	2018	2019	2020	2021	(2017-2021) 5 Year Average	2020 to 2021 Percent Change	2021 to 5 Year Average Percent Change
<b>ALCOHOL ARRESTS</b>											
Driving while Intoxicated	177	182	174	207	241	214	220	283	233	29%	21%
Open Container in MV	56	72	60	60	83	55	54	78	66	44%	18%
Open Container in Public	33	11	14	44	24	20	4	3	19	-25%	-84%
Consuming / Possessing Alcohol	164	175	252	308	295	240	299	223	273	-25%	-18%
Sell/Furnish Alc to Minor	6	14	2	4	5	7	1	2	4	100%	-47%
Serve Alcohol After Hours	0	0	0	0	2	0	0	1	1	-	67%
Altered DL/Dsply Another DL	0	0	0	0	0	0	0	0	0	-	-
Social Host/Common Nuisance	12	37	31	52	55	41	35	25	42	-29%	-40%
Zero Tolerance	0	0	3	2	1	0	1	6	2	500%	200%
<b>PROPERTY ARRESTS</b>											
Burglary	27	13	22	16	11	12	19	15	15	-21%	3%
Grand Theft	15	8	9	14	20	9	5	5	11	0%	-53%
Petty Theft	40	46	47	40	49	36	24	22	34	-8%	-36%
Shoplifting	58	116	90	54	53	61	57	48	55	-16%	-12%
Stolen Vehicles	6	7	10	6	6	10	8	9	8	13%	15%
Unauthorized Use of MV	4	2	4	3	4	2	3	4	3	33%	25%
Possession of Stolen Prop	4	13	12	7	7	6	11	7	8	-36%	-8%
Forgery	11	10	8	6	10	12	5	20	11	300%	89%
ATM/Card Fraud/Fraud	8	7	8	8	23	18	15	13	15	-13%	-16%
Embezzlement	3	1	3	6	6	1	4	1	4	-75%	-72%
Obtaining Service W/O Pay	4	3	0	2	8	1	2	1	3	-50%	-64%
Tamper with Motor Vehicle	0	5	2	2	3	1	0	0	1	-	-100%
Passing No Account/ISF	2	1	6	1	1	2	1	2	1	100%	43%
Offen Matter/Aband Veh	2	1	6	5	2	1	1	2	2	100%	-9%
False Pret/Swindle/Fraud	0	2	4	5	6	0	2	0	3	-100%	-100%
Intentional Dmg (Vndism)	40	39	46	44	45	41	43	26	40	-40%	-35%
Criminal Entry Motor Veh	7	8	7	11	9	1	12	2	7	-83%	-71%
Possession Burglary Tools	0	0	0	2	0	0	1	1	1	0%	25%
Robbery	1	1	4	6	4	1	1	0	2	-100%	-100%
Arson	2	1	0	0	0	1	4	3	2	-25%	88%
Zoning Violation	2	3	0	0	3	4	3	1	2	-67%	-55%
Aid/Abeting/Adv/Accessory	1	6	3	1	5	2	2	1	2	-50%	-55%
<b>DRUG ARRESTS</b>											
Possess Mari (< than 2 oz)	114	125	118	161	239	152	117	46	143	-61%	-68%
Possess Mari (> than 2 oz)	4	12	2	1	8	8	6	1	5	-83%	-79%
Distribute Marijuana	19	19	5	8	17	7	4	3	8	-25%	-62%
Possess Drug Paraphernalia	151	164	146	227	304	217	187	137	214	-27%	-36%
Possess Controlled Sub	43	75	86	115	129	125	133	115	123	-14%	-7%
Distribute Controlled Sub	7	18	5	16	12	18	16	10	14	-38%	-31%
Drug Arrest Referrals	0	0	106	126	125	128	208	249	167	20%	49%
Inhabit Place Cont Sub Stored	7	14	13	12	17	4	15	14	12	-7%	13%
Sell Tobacco/Possess	2	3	1	1	3	1	26	58	18	123%	226%
Obtaining Scheduled Drugs	0	3	1	2	1	3	0	0	1	-	-100%
Ingesting Toxic Substance	118	116	111	180	261	195	109	74	164	-32%	-55%
<b>DRUG ARREST TOTALS</b>	<b>465</b>	<b>549</b>	<b>594</b>	<b>849</b>	<b>1116</b>	<b>858</b>	<b>821</b>	<b>707</b>	<b>870</b>	<b>-14%</b>	<b>-19%</b>



# Adult Arrests Continued



<b>OTHER ARRESTS</b>	<b>2014</b>	<b>2015</b>	<b>2016</b>	<b>2017</b>	<b>2018</b>	<b>2019</b>	<b>2020</b>	<b>2021</b>	<b>(2017-2021) 5 Year Average</b>	<b>2020 to 2021 Percent Change</b>	<b>2021 to 5 Year Average Percent Change</b>
Bribery	0	0	0	0	0	0	0	0	0	-	-
Int Interruption of Comm	14	9	13	11	12	6	6	5	8	-17%	-38%
Harbor and Conceal	0	1	0	0	0	3	0	2	1	-	100%
File False Report	11	11	9	5	11	7	7	4	7	-43%	-41%
Eluding On Foot	3	0	2	3	2	1	2	4	2	100%	67%
Fail to Comply w/ Warn Ticket	0	3	1	0	0	0	0	1	0	-	400%
Misprision of Felony/Conspiracy	2	1	1	1	9	3	2	0	3	-100%	-100%
Prostitution/Hiring for Sex Favors	1	0	0	0	1	0	0	3	1	-	275%
Compulsory School Attend	0	0	0	0	0	0	1	1	0	0%	150%
Peddling	0	0	0	0	0	0	1	0	0	-100%	-100%
Windowpeek/Take pics w/o conser	3	3	1	2	1	2	2	1	2	-50%	-38%
Tamper with Utility Meter	2	1	2	1	3	0	0	0	1	-	-100%
Discharge Fireworks in City	0	2	0	7	0	2	4	3	3	-25%	-6%
Disch Firearm in City Limits	0	0	2	0	0	4	0	2	1	-	67%
Fail to Return Books to Library	4	3	6	1	0	0	0	0	0	-	-100%
Contribute to Dlnqncy of Minor	0	0	0	0	0	9	6	10	5	67%	100%
Tobacco Ban	0	0	0	0	0	0	0	0	0	-	-
Vehicular Homicide/Battery	0	0	0	0	0	0	0	0	0	-	-
Poss Firearm/Weapons Violation	8	8	17	14	11	11	9	12	11	33%	5%
Building Code Violation	0	0	0	0	0	0	0	0	0	-	-
Tamper with Signs	0	0	0	0	0	0	0	0	0	-	-
Open Burning	0	0	0	0	0	0	0	0	0	-	-
Indecent Act/Language	0	0	0	0	0	0	0	0	0	-	-
Prosecution Viol/Gen Discharge	0	0	0	0	0	0	0	0	0	-	-
Contempt/Tamper with Witness	0	0	3	1	0	0	0	0	0	-	-100%
<b>ASSAULT ARRESTS</b>											
Kidnapping / False Imprisonment	8	3	8	3	9	7	2	5	5	150%	-4%
Murder/Manslaughter	0	0	0	1	1	0	1	1	1	0%	25%
Agg Assault (Total)	<b>22</b>	<b>40</b>	<b>51</b>	<b>45</b>	<b>41</b>	<b>30</b>	<b>26</b>	<b>21</b>	33	-19%	-36%
<i>Domestic</i>	16	19	33	30	24	23	20	11	22	-45%	-49%
<i>Non Domestic</i>	6	19	18	15	17	7	6	10	11	67%	-9%
<i>Veh Battery</i>	0	2	0	0	0	0	0	0	0	-	-
Simple Assault (Total)	<b>181</b>	<b>170</b>	<b>159</b>	<b>197</b>	<b>176</b>	<b>164</b>	<b>170</b>	<b>151</b>	172	-11%	-12%
<i>Domestic</i>	109	108	98	134	103	102	110	106	111	-4%	-5%
<i>Non Domestic</i>	72	62	61	63	73	62	60	45	61	-25%	-26%
Forcible Rape	1	5	6	8	4	6	1	1	4	0%	-75%
Statutory Rape	0	1	0	0	1	0	1	0	0	-100%	-100%
Sexual Contact/Sodomy	4	6	6	5	7	3	5	4	5	-20%	-17%
Threat/Harass Phone Calls	8	7	8	7	17	14	9	7	11	-22%	-35%
Child Abuse	4	3	10	6	14	12	8	10	10	25%	0%
Violation of Protection Order	19	22	19	31	11	11	8	17	16	113%	9%
Fail to Register as Sex Offender	8	1	6	10	2	8	1	3	5	200%	-38%
Sex Off Loitering/Residency Viol	1	1	1	2	1	2	2	1	2	-50%	-38%
Obstruct Law Enforce Offcr	13	13	23	14	17	19	14	37	20	164%	83%
Violate Court Order/Bond Cond	16	20	30	37	24	18	42	26	29	-38%	-12%
Intimidate/Threats	1	2	3	6	0	1	1	1	2	0%	-44%
Sexual Exploitation of Minor	0	3	5	3	6	2	2	4	3	100%	18%
Incest	0	0	0	1	2	0	0	0	1	-	-100%
Child Pornography	0	1	1	4	7	3	3	3	4	0%	-25%

		 <h2 style="text-align: center;">Adult Arrests Continued</h2> 								(2017-2021) 5 Year Average	2020 to 2021 Percent Change	2021 to 5 Year Average Percent Change
		2014	2015	2016	2017	2018	2019	2020	2021			
<b>DISORD CONDUCT ARRESTS</b>												
Disorderly Conduct		39	27	24	20	31	22	34	10	23	-71%	-57%
Fights		7	11	5	3	5	2	4	2	3	-50%	-38%
Loud Party		5	8	1	1	4	2	0	0	1	-	-100%
Loud Music/Noise		0	0	0	0	0	0	0	0	0	-	-
Stalking		0	1	0	0	2	1	2	4	2	100%	122%
Urinating in Public		11	12	7	11	8	2	7	1	6	-86%	-83%
Resisting Arrest		17	24	12	20	26	11	13	12	16	-8%	-27%
Disobey Lawful Command		0	1	0	0	0	0	0	0	0	-	-
Trespassing		17	38	33	30	69	49	41	15	41	-63%	-63%
Indecent Exposure		0	1	3	0	1	0	1	2	1	100%	150%
False Personation		7	8	15	25	14	13	12	20	17	67%	19%
Refuse to Disperse		0	0	0	0	0	0	0	0	0	-	-
Littering		2	4	3	3	3	1	1	1	2	0%	-44%
Escape		0	1	0	0	0	0	0	1	0	-	400%
Throw Object on Roadway		1	0	1	0	1	1	0	3	1	-	200%
<b>Total Adult Arrests</b>		<b>1768</b>	<b>2033</b>	<b>2004</b>	<b>2374</b>	<b>2721</b>	<b>2183</b>	<b>2109</b>	<b>1812</b>	<b>2240</b>	<b>-14%</b>	<b>-19%</b>









# Juvenile Arrests



	2014	2015	2016	2017	2018	2019	2020	2021	(2017-2021) 5 Year Average	2020 to 2021 Percent Change	2021 to 5 Year Average Percent Change
<b>ALCOHOL ARRESTS</b>											
Driving while Intoxicated	1	2	4	0	1	0	1	7	2	600%	289%
Open Container in MV	1	1	4	0	1	0	1	0	0	-100%	-100%
Open Container in Public	0	0	0	0	0	0	0	0	0	-	-
Consuming Alcohol	24	44	23	36	27	32	49	36	36	-27%	0%
Possess Alcohol	0	0	0	0	0	0	0	0	0	-	-
Attempt to Purchase Alcohol	0	0	0	0	0	0	0	0	0	-	-
Altered DL (alcohol related)	0	0	0	0	0	0	0	0	0	-	-
Misrepresent Age	0	0	0	0	0	0	0	0	0	-	-
Maintain Place Viol Bev Law	0	0	0	0	0	0	0	0	0	-	-
Furnish Alc to Minor	0	0	0	0	0	0	0	0	0	-	-
Zero Tolerance	0	0	0	0	0	0	1	1	0	0%	150%
<b>PROPERTY CRIMES ARRESTS</b>											
Burglary	1	5	0	4	0	1	0	1	1	-	-17%
Grand Theft	1	4	2	2	0	0	2	0	1	-100%	-100%
Petty Theft	12	18	5	5	0	2	7	11	5	57%	120%
Shoplifting	20	42	33	8	5	8	9	4	7	-56%	-41%
Stolen Vehicles	0	1	2	0	0	0	1	0	0	-100%	-100%
Unauthorized Use of MV	2	2	1	1	0	1	4	0	1	-100%	-100%
Possession of Stolen Prop	2	5	1	3	1	0	2	1	1	-50%	-29%
Forgery	0	0	0	1	1	0	1	0	1	-100%	-100%
ATM Fraud	0	0	0	0	0	0	0	0	0	-	-
Embezzlement	1	0	0	0	0	0	1	1	0	0%	150%
Obtaining Service W/O Pay	0	1	0	0	0	0	0	0	0	-	-
Tamper with Motor Vehicle	0	2	0	0	0	1	0	0	0	-	-100%
Passing Check/No Account	0	0	0	0	0	0	0	0	0	-	-
False Pretense/Swindling	0	0	0	0	0	0	2	0	0	-100%	-100%
Intentional Dmg (Vndlsm)	8	6	8	11	10	7	14	11	11	-21%	4%
Fraud	0	0	0	2	0	0	0	0	0	-	-100%
Possession Burglary Tools	0	1	0	0	0	0	0	0	0	-	-
Robbery	0	0	0	0	1	0	2	0	1	-100%	-100%
Arson	0	0	0	0	0	0	0	0	0	-	-
Hit & Run	1	0	2	0	1	0	0	0	0	-	-100%
Bomb Threats	0	0	0	0	0	0	0	0	0	-	-
Burglary Attempt	0	0	0	0	0	0	0	0	0	-	-
Conspiracy to Commit Fel	2	0	0	0	1	0	0	0	0	-	-100%
Aiding/Abetting	0	1	0	0	0	0	0	0	0	-	-
Criminal Entry of Motor Veh	5	11	9	0	1	0	6	0	1	-100%	-100%
<b>DRUG ARRESTS</b>											
Possess Mari (< than 1 oz)	16	26	6	24	14	19	12	10	16	-17%	-37%
Possess Mari (> than 1 oz)	0	3	1	0	0	0	0	0	0	-	-
Distribute Marijuana	1	5	1	0	0	0	1	0	0	-100%	-100%
Possess Drug Paraphernalia	15	31	16	26	18	25	18	16	21	-11%	-22%
Possess Controlled Subs	4	8	4	6	3	17	6	11	9	83%	28%
Distribute Controlled Subs	1	1	1	1	0	1	0	0	0	-	-100%
Manufacture Controlled Subs	0	0	0	0	0	0	0	0	0	-	-
Inhabit Place Cont Subs Stored	0	0	0	0	0	0	0	0	0	-	-
Possess/Purchase Tobacco	38	53	21	34	71	87	55	110	71	100%	54%
Sell Tobacco to Minor	0	0	0	0	0	0	0	0	0	-	-
Obtaining Scheduled Drugs	0	0	0	0	0	0	0	0	0	-	-
Ingesting Toxic Substance	25	32	19	21	20	28	4	9	16	125%	-45%
Huffing	0	0	0	0	0	0	0	0	0	-	-
Poss/Ingest Synthestic Substance	0	0	0	0	0	0	0	0	0	-	-
<b>DRUG ARREST TOTALS</b>	<b>100</b>	<b>159</b>	<b>69</b>	<b>112</b>	<b>126</b>	<b>177</b>	<b>96</b>	<b>156</b>	<b>133</b>	<b>63%</b>	<b>17%</b>

 <h2 style="text-align: center;">Juvenile Arrests Continued</h2> 									(2017-2021) 5 Year Average	2020 to 2021 Percent Change	2021 to 5 Year Average Percent Change	
		2014	2015	2016	2017	2018	2019	2020	2021			
<b>OTHER ARRESTS</b>												
Bribery		0	0	0	0	0	0	0	0	0	-	-
Indecent Language		0	0	0	0	0	0	0	0	0	-	-
Int Interruption of Comm		0	0	0	1	0	1	0	0	0	-	-100%
Falsifying Official ID		0	0	0	0	0	0	0	0	0	-	-
File False Report		1	1	1	1	0	0	0	1	0	-	150%
Eluding On Foot		0	0	0	0	1	0	0	2	1	-	233%
Misprision of Felony		0	0	0	0	0	0	0	0	0	-	-
Windowpeeking		0	0	0	0	0	0	0	1	0	-	400%
Possession of Stun Gun		0	0	0	0	0	0	0	0	0	-	-
Possession of Ballistic Knife		0	0	0	0	0	0	0	0	0	-	-
Discharge Fireworks in City		2	0	0	0	0	0	0	0	0	-	-
Weapons Violation		0	0	0	1	0	1	0	0	0	-	-100%
Contribute to Dlnqncy of Minor		0	0	0	0	0	0	0	1	0	-	400%
Runaways		17	15	24	12	31	21	18	42	25	133%	69%
Holdovers		10	15	5	1	0	1	4	2	2	-50%	25%
Driving Under Revocation		0	0	0	0	0	0	0	0	0	-	-
Shooting Pellet Gun		0	0	0	0	0	0	0	0	0	-	-
Possess Roadsign		0	0	0	0	0	0	0	0	0	-	-
Weapon on School Grounds		0	0	0	0	0	0	0	0	0	-	-
Tamper with Fire Alarm System		0	0	0	0	0	0	0	0	0	-	-
Display Another's DL or ID		0	0	0	0	0	0	0	0	0	-	-
Fail to Comply w/ Warning Ticket		0	0	0	0	0	0	0	0	0	-	-
Tamper with Signs		0	0	0	0	0	0	0	0	0	-	-
Peddling/Sales Tax Violation		0	0	0	0	0	0	0	0	0	-	-
School Attendance / Habitual		0	0	41	26	29	28	12	48	29	300%	68%
<b>ASSAULT ARRESTS</b>												
Homicide		0	0	0	0	0	0	0	0	0	-	-
Agg Assault (Total)		3	2	3	4	2	1	4	3	3	-25%	7%
<i>Domestic</i>		0	0	0	1	0	1	1	1	1	0%	25%
<i>Non Domestic</i>		3	2	3	3	2	0	3	2	2	-33%	0%
<i>Veh Battery</i>		0	0	0	0	0	0	0	0	0	-	-
Simple Assault (Total)		6	13	11	17	9	9	14	16	13	14%	23%
<i>Domestic</i>		0	1	0	1	1	1	8	7	4	-13%	94%
<i>Non Domestic</i>		6	12	11	16	8	8	6	9	9	50%	-4%
Forcible Rape		0	0	0	0	0	0	0	0	0	-	-
Statutory Rape		0	0	0	0	0	0	0	0	0	-	-
Sexual Contact		0	0	0	1	0	0	1	0	0	-100%	-100%
Threat/Harass Phone Calls		0	0	1	2	0	0	2	0	1	-100%	-100%
Obstruct Law Enforce Offcr		0	1	1	0	0	0	0	2	0	-	400%
Viol Court Order/Bond Cond		0	1	0	0	0	0	0	0	0	-	-
Bomb Threat/Terror Threat		0	1	4	1	1	0	0	2	1	-	150%
Violate Protection Order		0	0	0	1	0	0	1	0	0	-100%	-100%
Threats Injure Law Enf Off		0	0	0	1	0	0	0	0	0	-	-100%
Pornography		0	0	0	0	0	0	0	0	0	-	-
<b>DISORD CONDUCT ARRESTS</b>												
Disorderly Conduct		17	12	5	8	8	16	7	14	11	100%	32%
Fights		2	2	7	4	1	0	0	0	1	-	-100%
Loud Party		0	0	0	0	0	0	0	0	0	-	-

 <h2 style="text-align: center;">Juvenile Arrests Continued</h2> 									(2017-2021)			
		2014	2015	2016	2017	2018	2019	2020	2021	5 Year Average	2020 to 2021 Percent Change	2021 to 5 Year Average Percent Change
<b>DISORD COND ARRESTS-CONT</b>												
Loud Music/Noise	0	0	0	0	0	0	0	0	0	-	-	-
Urinating in Public	0	0	0	2	0	2	0	0	1	-	-100%	-100%
Resisting Arrest	1	2	1	2	1	0	2	0	1	-100%	-100%	-100%
Disobey Lawful Command	0	0	0	0	0	0	0	0	0	-	-	-
Trespassing	0	1	3	1	0	0	1	0	0	-100%	-100%	-100%
Indecent Exposure	0	0	1	0	0	0	0	0	0	-	-	-
False Personation	1	2	0	2	0	0	0	0	0	-	-100%	-100%
Refuse to Disperse	0	0	0	0	0	0	0	5	1	-	400%	400%
Littering	0	1	1	0	0	1	3	0	1	-100%	-100%	-100%
Throw Substance at MV/Roadway	0	0	0	1	8	0	0	0	2	-	-100%	-100%
Threats/Intimidation/Stalking	0	0	0	0	0	0	0	0	0	-	-	-
Throw Burning Object from MV	0	0	1	1	0	0	0	0	0	-	-100%	-100%
Indecent Act	0	0	0	0	0	0	0	0	0	-	-	-
Disturbance of School	0	2	3	1	1	6	2	4	3	100%	43%	43%
<b>Total Juvenile Arrests</b>	<b>252</b>	<b>387</b>	<b>285</b>	<b>294</b>	<b>283</b>	<b>337</b>	<b>292</b>	<b>400</b>	<b>321</b>	<b>37%</b>	<b>25%</b>	<b>25%</b>





# Traffic Citations



TRAFFIC VIOLATIONS	2014	2015	2016	2017	2018	2019	2020	2021	(2017-2021) 5 Year Average	2020 to 2021 Percent Change	2021 to 5 Year Average Percent Change
Speeding	225	277	616	516	241	436	395	397	397	1%	0%
Stop Sign/Lights	124	122	128	106	79	115	100	118	104	18%	14%
No Drivers License	116	114	117	122	125	111	120	121	120	1%	1%
Careless Driving	38	50	52	42	30	29	41	42	37	2%	14%
Exhibition Driving	28	32	19	29	22	35	49	62	39	27%	57%
Reckless Driving	11	12	10	11	13	12	13	12	12	-8%	-2%
Expired Plates	74	80	64	96	70	54	38	63	64	66%	-2%
No Insurance	282	181	163	156	162	203	154	179	171	16%	5%
Fail to Register Vehicle	0	2	1	3	0	2	1	4	2	300%	100%
Substitute Plates/Counterfeiting	13	9	13	17	8	7	19	5	11	-74%	-55%
Revoked Drivers License	70	46	46	49	53	44	43	36	45	-16%	-20%
Possession Revoked DL	27	17	19	12	7	7	6	5	7	-17%	-32%
Suspended Drivers License	72	84	96	133	152	120	113	155	135	37%	15%
Possession Suspended DL	0	0	0	17	28	15	26	27	23	4%	19%
Cancelled Drivers License	0	0	4	2	2	3	4	4	3	0%	33%
Possession of Cancelled DL	0	0	0	0	0	0	0	0	0	-	-
DL not in Possession	1	1	1	3	0	0	0	0	1	-	-100%
Driving on Restricted Permit	0	0	0	0	0	0	0	0	0	-	-
Allow Unauth Person to Drv	4	3	0	1	0	1	0	0	0	-	-100%
DL Requirement Violation	10	9	4	9	5	7	5	3	6	-40%	-48%
Eluding in Motor Vehicle	0	0	0	3	0	1	0	0	1	-	-100%
Cross Over on Roadway	0	0	0	0	0	0	0	0	0	-	-
Hit/Run	1	4	2	1	2	0	1	1	1	0%	0%
Leave Scene of Accident	28	26	31	36	28	52	40	44	40	10%	10%
Fail to Report Accident	10	18	5	11	14	11	9	8	11	-11%	-25%
Fail to Yield Right of Way	41	43	31	38	39	53	34	56	44	65%	27%
Improper Backing	4	6	9	11	10	11	7	7	9	0%	-24%
Improper Passing	3	1	4	2	1	2	2	4	2	100%	82%
Illegal Turn	5	4	8	8	10	1	6	6	6	0%	-3%
Drive Closed Street/Barrier	0	0	0	2	0	0	0	0	0	-	-100%
Display Another's DL	0	0	0	0	0	1	0	0	0	-	-100%
Let Someone Use DL	0	0	0	0	0	0	0	0	0	-	-
Display/Drive with Altered DL	0	0	1	1	0	0	2	2	1	0%	100%
Allow Underage Person to Drv	0	0	0	0	0	0	0	0	0	-	-
Headlamp Violation	3	5	0	1	2	3	7	5	4	-29%	39%
Signals Not Used	0	0	1	0	0	0	0	0	0	-	-
Blue Flashing Light	0	0	0	0	0	0	0	0	0	-	-
Crossing Median	0	0	0	0	0	0	0	0	0	-	-
Slow Driving	0	0	0	0	0	0	2	0	0	-100%	-100%
Improper Muffler or Exhaust	0	0	1	5	1	1	6	7	4	17%	75%
Fail to Show Veh Registration	0	0	1	0	0	0	0	0	0	-	-
Texting/Distracted Driving	4	0	1	4	3	1	3	6	3	100%	76%
No Rear Plate	0	1	0	0	0	0	0	0	0	-	-
Driving on Wrong Side of Street	0	0	0	2	0	0	3	2	1	-33%	43%
Wrong Way on One-Way Street	3	1	0	0	1	0	3	0	1	-100%	-100%
Following Too Close	14	22	33	29	29	20	22	31	26	41%	18%
Unsafe Lane Change	11	9	11	16	12	20	16	24	18	50%	36%
Racing On Highway	5	9	8	5	0	4	4	9	4	125%	105%
Seatbelts	104	75	61	113	122	61	257	148	140	-42%	6%
Child Restraints	4	7	3	9	2	7	5	6	6	20%	3%



# Traffic Citations Continued



TRAFFIC VIOLATIONS	2014	2015	2016	2017	2018	2019	2020	2021	(2017-2021) 5 Year Average	2020 to 2021 Percent Change	2021 to 5 Year Average Percent Change
Fail to Yield at RR Crossing	0	1	1	0	0	0	0	0	0	-	-
Obstructing Traffic	0	0	0	0	0	0	0	0	0	-	-
Provide False Insurance Info	0	0	0	0	0	0	0	0	0	-	-
Fail to Stop for Emergency Veh	1	0	2	0	2	0	9	7	4	-22%	94%
Fail to Stop for School Bus	0	0	0	0	0	0	0	0	0	-	-
Fail to Yield to Hwy Worker	0	0	0	0	0	0	0	0	0	-	-
Walking on Wrong Side of Street	0	0	0	0	0	0	0	0	0	-	-
Traffic Under Control of Officer	0	0	0	0	0	0	0	0	0	-	-
Fail to Get SD Drivers License	0	0	0	2	0	0	0	0	0	-	-100%
Pasngr Interfering w/Driver/Acc	0	0	3	0	0	1	0	0	0	-	-100%
Sirens/ Horns Prohibited	1	0	0	0	0	0	1	0	0	-100%	-100%
Overdriving Road Conditions	14	18	12	12	30	25	12	12	18	0%	-34%
Improperly Equipped/Loaded Veh	2	0	1	1	1	1	0	2	1	-	100%
Failure to Transfer Title	0	0	1	0	0	0	0	0	0	-	-
Fail to Stop for Funeral Procssn	0	0	1	0	0	0	0	0	0	-	-
Non Transparent Window	0	0	1	2	4	0	1	4	2	300%	82%
Throwing Subst on Roadway	0	0	0	0	0	0	0	0	0	-	-
Unlawful Veh City Streets	0	0	0	0	0	0	0	1	0	-	400%
Illegal Use of Amber Lights	0	0	1	0	0	0	0	0	0	-	-
Window Obstruction	0	0	0	0	6	4	0	0	2	-	-100%
No Slow Moving Emblem	0	0	0	0	0	0	0	0	0	-	-
Move Over Law	0	0	0	0	0	0	0	0	0	-	-
Operate Veh with Unsafe Wheel	0	0	1	0	0	0	0	1	0	-	400%
Audible Signal	0	0	0	0	0	0	0	0	0	-	-
Hitching Rides	0	0	0	0	0	0	0	0	0	-	-
Dangling Object	0	0	0	0	0	0	1	0	0	-100%	-100%
Improperly Loaded Vehicle	0	0	0	0	0	0	0	0	0	-	-
Fail to drive on right 1/2 road	0	0	0	0	0	0	0	0	0	-	-
Drive over Firehose	0	0	0	0	0	0	0	0	0	-	-
Window Tint Violation	0	0	0	6	0	2	1	7	3	600%	119%
Dynamic Braking	1	2	2	0	0	0	0	0	0	-	-
<b>MOTORCYCLE VIOLATION</b>											
Loud Exhaust	0	0	0	0	0	0	0	0	0	-	-
No Eye Protection	0	2	0	2	1	0	1	0	1	-100%	-100%
Drive Without License	5	2	7	0	5	3	6	8	4	33%	82%
No Motorcycle Helmet	0	0	0	0	0	0	0	0	0	-	-
Motorcycle in Park	0	0	0	0	0	0	0	2	0	-	400%
Position of Motorcyclist	0	0	0	0	0	0	0	0	0	-	-
<b>ATV/SNOWMOBILE VIOLATIONS</b>											
Operating on City Streets	0	2	0	0	0	0	0	0	0	-	-
No Snowmobile License	0	0	0	0	0	0	0	0	0	-	-
Drive 3/4 Wheeler on City Strts	0	0	0	0	0	0	1	0	0	-100%	-100%
Operation at Intersection	0	0	0	0	0	0	0	0	0	-	-
Unlawful Area of Operation	0	3	1	0	1	0	1	0	0	-100%	-100%
Pet Violations (Total)	11	43	37	51	48	47	47	63	51	34%	23%
<i>Cat Violations</i>	1	2	2	2	5	3	0	2	2	-	-17%
<i>Dog Violations</i>	10	41	35	49	42	44	47	61	49	30%	26%
<b>Total Traffic Citations</b>	<b>1366</b>	<b>1339</b>	<b>1647</b>	<b>1697</b>	<b>1372</b>	<b>1537</b>	<b>1639</b>	<b>1707</b>	1590	4%	7%
<b>Warning Tickets</b>	<b>3512</b>	<b>3038</b>	<b>2450</b>	<b>3476</b>	<b>3148</b>	<b>4959</b>	<b>4805</b>	<b>4301</b>	4138	-10%	4%
<b>Parking Tickets</b>	<b>580</b>	<b>785</b>	<b>945</b>	<b>538</b>	<b>1210</b>	<b>1312</b>	<b>527</b>	<b>341</b>	786	-35%	-57%

# Watertown Police Department



**Division & Unit  
Monthly Report  
December 2021**



# Watertown Police Department

## Operations Bureau



### Patrol

Traffic Enforcement	Jan	Feb	Mar	Apr	May	Jun	July	Aug	Sept	Oct	Nov	Dec	Total	Mo Avg
Vehicle Stops	422	497	601	447	398	384	335	441	437	377	369	252	4960	413
Total Citations Issued	94	157	240	149	163	140	112	150	156	116	127	103	1707	142
Seatbelt Citations	6	28	19	14	19	14	5	9	14	10	7	3	148	12
Speeding Citations	21	47	97	43	33	33	23	9	44	14	24	9	397	33
Stoplight/sign Citations	10	6	8	11	6	8	9	12	10	14	12	12	118	10
Text while Driving Citations	0	1	0	2	2	0	0	1	0	0	0	0	6	1
Total Warning Tickets Issued	410	457	497	395	327	346	284	402	366	320	284	213	4301	358
Seatbelt Warnings	3	3	3	1	0	3	1	2	1	0	1	1	19	2
Speeding Warnings	107	129	139	113	87	108	62	123	98	57	80	23	1126	94
Stoplight/sign Warnings	19	37	34	28	22	27	29	8	18	25	19	37	303	25
Text w/ Driving Warnings	1	1	1	5	1	0	1	3	0	2	0	0	15	1
DUI Arrests	26	29	24	23	26	21	23	24	18	27	24	25	290	24
Parking Tickets Issued	22	21	175	13	11	12	2	21	20	18	4	22	341	28
Speed Trailer Deployments	0	0	10	5	5	7	5	5	5	4	1	0	47	4
Other Activity	Jan	Feb	Mar	Apr	May	Jun	July	Aug	Sept	Oct	Nov	Dec	Total	Mo Avg
Total Calls For Service	1678	1724	2103	1825	2041	2103	2244	2254	2138	2165	1969	1783	24027	2002
Stop Walk and Talks (SWATs)	12	23	19	14	36	33	21	7	10	26	31	17	249	21
Bar Checks/Walkthroughs	0	1	6	0	2	0	3	2	0	2	5	1	22	2
Field Contacts	28	29	32	32	39	42	77	76	34	39	22	18	468	39
Public Service Anns.	2	2	2	2	2	2	2	2	2	2	2	2	24	2
Business Checks	10	4	1	1	7	16	11	10	18	1	4	2	85	7
Open Windows/Doors	7	4	3	1	6	6	10	8	7	1	6	5	64	5
Airport Security Checks	53	47	50	51	55	48	65	63	69	100	111	72	784	65
Alarm Responses	31	28	30	28	19	42	43	48	48	38	33	42	430	36
Accident Reports	53	42	69	46	56	43	30	58	73	67	53	82	672	56
Child Safety Seats Installed	0	0	0	0	0	0	0	0	0	0	0	0	0	0
# of Bikes Recovered	1	1	3	0	4	3	0	0	7	6	2	1	28	2
# of Bikes Rtrnd to Owners	0	0	0	0	0	0	0	0	0	0	0	0	0	0
Extra Patrol Requests	14	9	27	17	23	24	12	15	18	13	14	13	199	17
Ride-alongs	2	3	0	1	0	2	0	1	0	4	1	4	18	2
Domestic Violence Calls	12	10	8	14	8	13	14	8	7	17	15	5	131	11



## Drug Activity

Drug Activity	Jan	Feb	Mar	Apr	May	Jun	July	Aug	Sept	Oct	Nov	Dec	Total	Mo Avg
Drug Arrests	54	51	46	61	73	22	22	18	20	18	40	19	444	37
Drug Arrest Referrals*	13	24	36	27	30	23	16	14	15	15	16	20	249	21
Vehicle Seizures	0	0	0	0	0	0	0	0	0	0	0	0	0	0
Cash Seizures	0	0	0	0	1	0	0	0	0	0	1	0	2	0
Marijuana Arrests	12	11	4	8	11	2	1	1	0	2	3	5	60	5
Marijuana Arrest Referrals*	3	8	7	6	5	7	0	4	9	3	4	4	60	5
Controlled Substs Arrests	11	15	16	21	24	5	11	8	8	7	17	5	148	12
Cont Subst Arrest Referrals*	3	8	12	5	2	6	8	3	3	3	5	9	67	6
Drug Paraphernalia Arrests	20	18	18	22	22	10	6	4	8	6	14	5	153	13
Drug Paraph. Referrals*	3	6	7	8	13	5	5	6	3	5	3	6	70	6
Pos. or Dist. Drug Free Zone	0	0	0	0	0	0	0	0	0	0	0	0	0	0
Pos or Dist Referrals	0	0	2	2	3	0	0	0	0	0	0	0	7	1
Ingesting Arrests (Misd)	4	2	3	4	9	3	0	1	1	1	0	0	28	2
Ingesting Arrests (Felony)	7	5	5	6	7	2	4	4	3	2	6	4	55	5
Ingesting Referrals (Misd)*	2	1	3	2	5	3	1	1	0	2	2	0	22	2
Ingest Referrals (Felony)*	2	1	5	4	2	2	2	0	0	2	2	1	23	2

\* Probable cause existed, but suspect was not charged by officer. The case was referred to State Attorney for charges.

## Criminal Investigative Division

Detectives	Jan	Feb	Mar	Apr	May	Jun	July	Aug	Sept	Oct	Nov	Dec	Total	Mo Avg
Cases Assigned	50	57	56	44	73	69	75	52	58	62	59	56	711	59
Arrests	1	1	2	3	3	3	6	4	4	2	3	2	34	3
Referred to State Attorney	3	3	5	3	13	14	17	8	9	17	21	8	121	10
Closed Cases	30	43	39	25	41	38	37	33	38	34	21	33	412	34
Pending	16	10	10	13	16	14	15	7	7	9	14	13	144	12
Cases Assigned to Detectives	50	57	56	44	73	69	75	52	58	62	59	56	711	59
Cases Assigned to Officers	5	2	11	8	4	3	7	17	11	8	8	5	89	7
Total Cases Assigned	55	59	67	52	77	72	82	69	69	70	67	61	800	67
Closure Letters Sent	8	5	9	4	2	2	5	6	4	2	4	3	54	5

## Sex Offenders

Sex Offender Registrations	Jan	Feb	Mar	Apr	May	Jun	July	Aug	Sept	Oct	Nov	Dec	Total	Mo Avg
Semi-Annual Registrations	10	14	12	8	8	11	12	10	11	11	9	8	124	10
New Offenders Registered	3	1	1	4	1	0	3	5	3	3	4	1	29	2
Changes of Address	7	8	3	6	5	4	4	15	6	7	5	7	77	6
Address Verifications	0	0	0	0	0	0	0	65	1	0	0	0	66	6
Moved Out of Town	6	6	1	0	1	4	3	2	3	2	3	4	35	3
Number Referred to SA	1	1	0	1	1	0	0	3	1	1	0	1	10	1
# Non-Compliant	1	0	1	1	0	0	0	0	1	0	1	2	7	0.5833



## Animal Control Calls For Service

Handled by Humane Society	Jan	Feb	Mar	Apr	May	Jun	July	Aug	Sept	Oct	Nov	Dec	Total	Mo Avg
Abuse/Neglect	0	0	0	0	0	0	0	0	0	0	0	0	0	0
At Large/Missing	0	0	0	0	0	0	0	0	0	0	0	0	0	0
Dog Bites	0	0	0	0	0	0	0	0	0	0	0	0	0	0
Livestock	0	0	0	0	0	0	0	0	0	0	0	0	0	0
Barking	0	0	0	0	0	0	0	0	0	0	0	0	0	0
Wild Animals	0	0	0	0	0	0	0	0	0	0	0	0	0	0
Dead	0	0	0	0	0	0	0	0	0	0	0	0	0	0
Defecating	0	0	0	0	0	0	0	0	0	0	0	0	0	0
Kennel Violation	0	0	0	0	0	0	0	0	0	0	0	0	0	0
Shot	0	0	0	0	0	0	0	0	0	0	0	0	0	0
Traps	0	0	0	0	0	0	0	0	0	0	0	0	0	0
Vicious	0	0	0	0	0	0	0	0	0	0	0	0	0	0
Handled by Animal Control Ofcr	Jan	0	Mar	Apr	May	Jun	July	Aug	Sept	Oct	Nov	Dec	Total	Mo Avg
Abuse/Neglect	2	6	0	2	2	4	8	2	4	3	1	2	36	3
At Large/Missing	15	19	20	24	32	19	25	27	20	21	30	27	279	23
Dog Bites	0	2	5	1	0	2	3	3	2	1	0	1	20	2
Livestock	0	0	0	0	0	0	0	0	0	0	0	0	0	0
Barking	0	0	2	1	3	1	1	4	5	4	2	1	24	2
Wild Animals	1	6	5	16	16	25	10	18	10	6	3	4	120	10
Dead	0	0	1	4	2	5	4	2	7	3	2	2	32	3
Defecating	0	1	0	0	1	0	0	0	0	0	1	0	3	0
Kennel Violation	0	0	0	0	0	0	0	0	0	0	0	0	0	0
Shot	1	4	3	4	4	2	2	5	2	2	1	1	31	3
Traps	1	5	6	4	14	11	1	3	4	2	8	6	65	5
Vicious	0	0	0	0	0	0	0	1	0	0	0	0	1	0
Handled by Patrol Officers	Jan	Feb	Mar	Apr	May	Jun	July	Aug	Sept	Oct	Nov	Dec	Total	Mo Avg
Abuse/Neglect	6	7	0	2	2	12	9	10	5	4	4	4	65	5
At Large/Missing	30	27	40	50	68	72	70	69	57	62	41	37	623	52
Dog Bites	1	5	0	6	4	5	6	2	3	0	1	6	39	3
Livestock	0	0	0	0	0	1	3	0	1	1	0	0	6	1
Barking	5	6	7	2	8	8	5	5	5	8	4	6	69	6
Wild Animals	3	2	9	17	12	25	10	14	10	3	5	0	110	9
Dead	1	2	2	4	2	6	5	4	2	8	1	2	39	3
Defecating	0	0	3	0	2	0	0	1	1	0	1	0	8	1
Kennel Violation	0	0	0	0	0	0	0	0	0	0	0	0	0	0
Shot	0	1	4	1	0	1	0	3	0	0	1	1	12	1
Traps	0	1	0	1	1	1	3	0	0	1	5	0	13	1
Vicious	0	0	0	0	2	2	1	1	0	1	1	1	9	1
Animal Calls (All Personnel)	Jan	Feb	Mar	Apr	May	Jun	July	Aug	Sept	Oct	Nov	Dec	Total	Mo Avg
Abuse/Neglect	8	13	0	4	4	16	17	12	9	7	5	6	101	8
At Large/Missing	45	46	60	74	100	91	95	96	77	83	71	64	902	75
Dog Bites	1	7	5	7	4	7	9	5	5	1	1	7	59	5
Livestock	0	0	0	0	0	1	3	0	1	1	0	0	6	1
Barking	5	6	9	3	11	9	6	9	10	12	6	7	93	8
Wild Animals	4	8	14	33	28	50	20	32	20	9	8	4	230	19
Dead	1	2	3	8	4	11	9	6	9	11	3	4	71	6
Defecating	0	1	3	0	3	0	0	1	1	0	2	0	11	1
Kennel Violation	0	0	0	0	0	0	0	0	0	0	0	0	0	0
Shot	1	5	7	5	4	3	2	8	2	2	2	2	43	4
Traps	1	6	6	5	15	12	4	3	4	3	13	6	78	7
Vicious	0	0	0	0	2	2	1	2	0	1	1	1	10	1



# Watertown Police Department

## Professional Standards Division



### Police Training

Hours of Training	Jan	Feb	Mar	Apr	May	Jun	July	Aug	Sept	Oct	Nov	Dec	Total	Mo Avg
Recruit Officers in PTO	750	800	530	320	160	560	320	320	160	0	60	100	4080	340
Officers at LET	0	0	360	352	320	0	0	0	320	336	240	0	1928	161
Patrol Officers	90.5	97.8	59.25	174	72	84	99	86.5	194	114	111	72.8	1254	105
Detectives	3.5	16.5	12.5	4	0.5	27.3	17	5	24	36.5	10	13.5	170	14
School Resource Officers	0	4.5	2	28.3	0	25	0	43	2	16	5	41	167	14
Supervisors	34.5	262	21	56.5	6	59	37	16	71.5	82.5	90.5	44.5	781	65
Officer Trumm/Crown & Sadie	8	8	8	8	8	8	0	6.5	155	33.6	12.1	17.6	272	23
Officer Maertens & Bono	8	8	8	8	8	6	11	12.5	6	17	12	10	115	10
Command Staff	2	101	67	9	1	2.5	1.5	1.5	34	8	10	12.5	250	21
<b>Total Police Training</b>	<b>897</b>	<b>1297</b>	<b>1067.8</b>	<b>960</b>	<b>576</b>	<b>772</b>	<b>486</b>	<b>491</b>	<b>966</b>	<b>644</b>	<b>550</b>	<b>312</b>	<b>9017</b>	<b>-</b>

### Other Training

Training Hours	Jan	Feb	Mar	Apr	May	Jun	July	Aug	Sept	Oct	Nov	Dec	Total	Mo Avg
SWAT	120	120	120	120	120	120	120	100	120	120	80	120	1380	115
SWAT Team Members Trained	12	10	8	12	11	10	10	8	9	8	10	10	118	10
Firearms	10	15	0	0	0	16	0	0	19	20	6	3	89	7
Reserve Officers	25	13	22	26	28	8	39.5	43	20.5	27.5	49.5	55	357	30

### Communications Officer Training

Training Hours	Jan	Feb	Mar	Apr	May	Jun	July	Aug	Sept	Oct	Nov	Dec	Total	Mo Avg
Training/Development	74	78.8	124	91.5	48	48	76	57.5	95	188	100	85	1066	89

### Interns

Interns	Jan	Feb	Mar	Apr	May	Jun	July	Aug	Sept	Oct	Nov	Dec	Total	Mo Avg
# of Interns	0	0	1	2	3	0	0	0	0	0	0	0	6	1
Intern Hours	0	0	38	186	69	0	0	0	0	0	0	0	293	24

## Community Room Use

Community Room Use	Jan	Feb	Mar	Apr	May	Jun	July	Aug	Sept	Oct	Nov	Dec	Total	Mo Avg
Community Use	2	6	2	16	4	14	2	12	6	5	10	7	86	7.2
General WPD Use	7	4	5	8	15	9	10	3	5	1	6	3	76	6.3

## Internal Affairs

Commendations	Jan	Feb	Mar	Apr	May	Jun	July	Aug	Sept	Oct	Nov	Dec	Total	Mo Avg
Public Compliments/Letters	0	0	0	0	1	0	0	1	0	1	1	1	5	0.4
Job Well Done Letters	0	0	3	0	2	1	3	4	2	1	2	1	19	1.6
Complaints	Jan	Feb	Mar	Apr	May	Jun	July	Aug	Sept	Oct	Nov	Dec	Total	Mo Avg
Total Complaints Received	2	0	0	1	2	1	0	0	2	1	1	0	10	0.8
Alleged Violations	2	0	0	6	2	1	0	0	2	1	3	0	17	1.4
Inquiries Conducted	2	0	0	1	2	1	0	0	2	1	1	0	10	0.8
Exonerated	2	0	0	0	0	0	0	0	0	0	0	0	2	0.2
Unfounded	0	0	0	0	0	0	0	0	0	0	0	0	0	0.0
Not Sustained	0	0	0	0	0	0	0	0	0	1	0	0	1	0.1
Sustained	0	0	0	6	2	1	0	0	2	0	3	0	14	1.2
Policy Failure	0	0	0	0	0	0	0	0	0	0	0	0	0	0.0
Pending (at end of month)	0	0	0	0	0	0	0	0	0	0	0	0	-	-





# Watertown Police Department

## Support Services Division



### 911 Center

911 Center	Jan	Feb	Mar	Apr	May	Jun	July	Aug	Sept	Oct	Nov	Dec	Total	Mo Avg
Presentations by Dispatchers	0	0	2	8	0	2	2	7	0	0	3	3	27	2
Quality Assurance EMD														
EMD Compliance	51	63	62	56	54	42	48	40	53	43	61	46	619	--
Total Calls Graded	56	64	67	63	59	48	52	41	55	47	64	49	665	--
Quality Assurance EFD														
EFD Compliance	9	16	12	21	20	7	28	10	10	7	16	11	167	--
Total Calls Graded	9	16	12	22	21	8	28	10	10	7	19	12	174	--
911 Calls														
Avg Answer Time (sec)	95	95.6	94.7	93.3	95.6	92.9	93.5	94.5	96.4	95.3	95.7	97.12	--	95.0
Avg call length (min.sec)	2.85	3.01	2.78	2.60	2.53	2.30	2.19	2.23	2.41	2.63	2.63	2.83	--	2.58
Codington	509	489	575	570	653	687	831	749	660	760	718	661	7862	655
Day	80	52	90	74	87	130	145	108	106	87	117	103	1179	98
Hamlin	105	52	79	79	87	116	130	143	79	133	109	97	1209	101
Grant	85	50	94	80	93	106	109	103	119	101	102	117	1159	97
Roberts	12	8	11	7	12	24	18	19	16	16	5	22	170	14
Clark	66	48	72	62	62	64	80	88	63	91	65	61	822	69
Deuel	58	45	57	65	78	149	128	100	75	89	93	80	1017	85
Other	35	12	25	30	33	38	56	40	38	33	42	16	398	33
Total No. (all counties)	950	756	1003	967	1105	1314	1497	1350	1156	1310	1251	1157	13816	1151.3
Calls For Service (CFS)														
Total 911 Center CFS	3417	3171	3873	3756	4105	4458	4601	4391	4089	4347	3,971	3,585	47764	3980



WPD CFS														
NE	601	658	773	599	698	618	663	681	721	816	665	617	8110	676
NW	331	299	360	354	386	444	443	436	361	531	378	325	4648	387
SE	418	457	560	486	475	548	601	624	607	787	507	517	6587	549
SW	282	264	350	320	361	315	343	376	343	411	372	250	3987	332
Lake	19	26	21	37	81	138	168	101	54	43	18	39	745	62
Other	27	20	39	29	40	40	26	36	52	33	29	35	406	34
<b>Total</b>	<b>1678</b>	<b>1724</b>	<b>2103</b>	<b>1825</b>	<b>2041</b>	<b>2103</b>	<b>2244</b>	<b>2254</b>	<b>2138</b>	<b>2621</b>	<b>1969</b>	<b>1783</b>	<b>24483</b>	<b>2040</b>
<b>WPD Traffic Stops by District</b>														
NE	127	175	197	141	111	88	101	138	152	122	96	88	1536	128
NW	83	78	105	79	75	97	53	77	52	50	41	31	821	68
SE	132	161	187	147	119	102	104	126	154	172	120	100	1624	135
SW	73	75	100	76	75	66	61	86	62	78	108	30	890	74
Lake	0	3	3	1	9	24	12	7	3	2	0	0	64	5
Other	7	5	9	3	9	7	4	7	4	6	4	3	68	6
<b>Total</b>	<b>422</b>	<b>497</b>	<b>601</b>	<b>447</b>	<b>398</b>	<b>384</b>	<b>335</b>	<b>441</b>	<b>427</b>	<b>430</b>	<b>369</b>	<b>252</b>	<b>4382</b>	<b>417</b>
Triple 'I's Run	138	125	106	145	139	89	130	98	123	104	114	89	1400	117

### Records Unit

Entered Into RMS	Jan	Feb	Mar	Apr	May	Jun	July	Aug	Sept	Oct	Nov	Dec	Total	Mo Avg
Calls Coded	947	959	1128	1033	1227	1202	1263	1215	1175	1257	1066	1041	13513	1126
Citations Entered	300	341	433	353	358	257	300	294	340	320	276	222	3794	316
Warning Tickets Entered	410	457	497	395	327	346	284	402	366	320	284	213	4301	358
Parking Tickets Entered	22	21	175	13	11	12	2	21	20	18	4	22	341	28
Accidents Entered	53	42	69	46	56	43	30	58	73	67	53	89	679	57
Adult Arrests	204	169	165	164	190	113	167	123	129	158	120	111	1813	151
Juvenile Arrests	47	33	43	37	46	14	11	12	34	44	53	24	398	33
<b>Other Records Activity</b>	<b>Jan</b>	<b>Feb</b>	<b>Mar</b>	<b>Apr</b>	<b>May</b>	<b>Jun</b>	<b>July</b>	<b>Aug</b>	<b>Sept</b>	<b>Oct</b>	<b>Nov</b>	<b>Dec</b>	<b>Total</b>	<b>Mo Avg</b>
Persons Fingerprinted	31	19	26	29	27	39	40	31	28	28	25	25	348	29
Peddler's Licenses	0	0	0	4	0	2	2	1	0	5	1	1	16	1
Accident Reports Purchased	29	19	22	40	17	54	10	22	56	59	16	36	380	32
Online Reports Purchased	25	18	25	19	22	15	24	11	27	32	18	33	269	22

### Vehicle Maintenance

Vehicle Maintenance	Jan	Feb	Mar	Apr	May	Jun	July	Aug	Sept	Oct	Nov	Dec	Total	Mo Avg
Shop Maintenance Hours	24.0	18.0	21.0	23.0	19.0	21.0	22.0	24.0	20.0	24.0	21.0	20.0	257	21.417
No. of Vehicle Repairs	32	25	38	25	31	28	32	28	33	26	34	21	353	29.417
Parts (Dollars)	225	365	880	640	310	125	320	285	586	520	660	415	5331	444.25

### Information Technology

Information Technology	Jan	Feb	Mar	Apr	May	Jun	July	Aug	Sept	Oct	Nov	Dec	Total	Mo Avg
RIEM Partner Assist (Hours)	2	2	4	5	5	2	2	2	2	2	2	2	32	2.6667



# Watertown Police Department



## Special Operations Division

### School Resource Officers

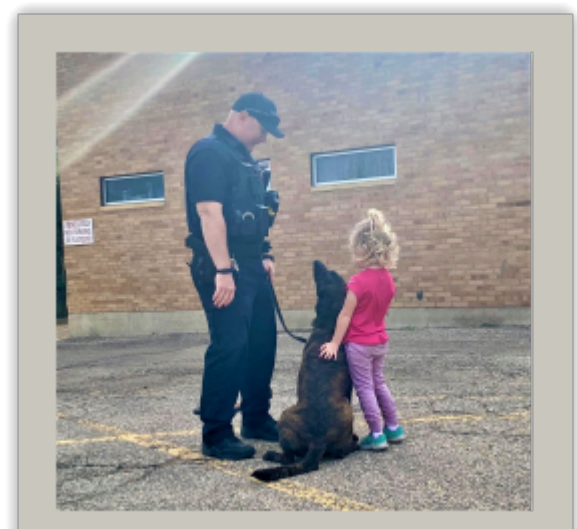
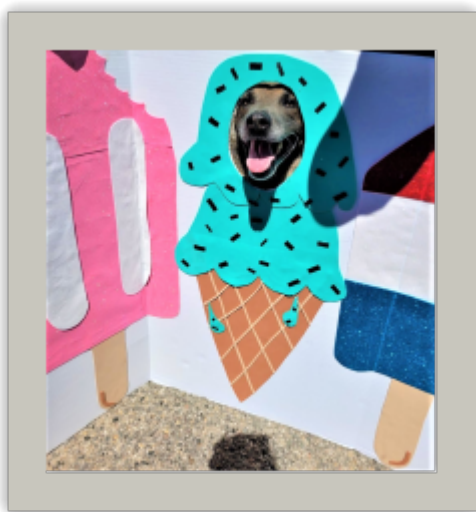
School Resource Officers	Jan	Feb	Mar	Apr	May	Jun	July	Aug	Sept	Oct	Nov	Dec	Total	Mo Avg
<b>SRO Stricherz / Johnson (WMS)</b>														
Property Crimes	1	1	0	0	5				1	3	3	1	15	2
Personal Crimes	6	5	11	3	1				4	1	1	7	39	4
Conflict Resolution	0	0	0	0	0				4	1	1	2	8	1
Community Programs	2	2	2	3	2				1	9	7	4	32	4
School Regulations	37	41	33	35	24				29	33	38	47	317	35
<b>Total Calls (Stricherz)</b>	<b>46</b>	<b>49</b>	<b>46</b>	<b>41</b>	<b>32</b>				<b>39</b>	<b>47</b>	<b>50</b>	<b>61</b>	<b>411</b>	<b>46</b>
<b>SRO Gutzmer / Harberts (WHS)</b>														
Property Crimes	1	1	0	5	2				6	3	4	3	25	2
Personal Crimes	79	46	35	43	26				39	26	30	11	335	46
Conflict Resolution	1	0	0	0	0				1	0	3	3	8	0
Community Programs	3	4	19	10	13				1	2	2	0	54	10
School Regulations	114	151	184	172	157				59	41	77	50	1005	156
<b>Total Calls (Gutzmer)</b>	<b>198</b>	<b>202</b>	<b>238</b>	<b>230</b>	<b>198</b>				<b>106</b>	<b>72</b>	<b>116</b>	<b>67</b>	<b>1427</b>	<b>213</b>
<b>Total For Both SROs</b>	<b>Jan</b>	<b>Feb</b>	<b>Mar</b>	<b>Apr</b>	<b>May</b>	<b>Jun</b>	<b>July</b>	<b>Aug</b>	<b>Sept</b>	<b>Oct</b>	<b>Nov</b>	<b>Dec</b>	<b>Total</b>	<b>Mo Avg</b>
Property Crimes	2	2	0	5	7				7	6	7	4	40	2
Personal Crimes	85	51	46	46	27				43	27	31	18	374	25
Conflict Resolution	1	0	0	0	0				5	1	4	5	16	1
Community Programs	5	6	21	13	15				2	11	9	4	86	7
School Regulations	151	192	217	207	181				88	74	115	97	1322	95
<b>SRO Totals</b>	<b>244</b>	<b>251</b>	<b>284</b>	<b>271</b>	<b>230</b>				<b>145</b>	<b>119</b>	<b>166</b>	<b>128</b>	<b>1838</b>	<b>129</b>

### Special Events / Presentations / Crime Prevention

Special Events	Jan	Feb	Mar	Apr	May	Jun	July	Aug	Sept	Oct	Nov	Dec	Total	Mo Avg
Community Events	0	2	2	3	7	5	17	8	7	7	4	2	64	5
Business Events	0	1	0	0	0	1	0	1	0	1	1	0	5	0
Youth/School Events	8	14	19	27	2	11	10	4	8	19	9	17	148	12
Tours	0	0	1	1	3	2	0	2	1	3	1	3	17	1
DARE Classes Taught	16	36	45	25	0	0	0	0	36	34	31	9	232	19
Crime Free Notifications	48	35	35	32	38	42	38	42	35	41	52	25	463	39

## K-9 Teams

K9	Jan	Feb	Mar	Apr	May	Jun	July	Aug	Sept	Oct	Nov	Dec	Total	Mo Avg
K-9 Presentations - Trumm/Cro	0	0	0	0	0	1	0	0	0	0	0	0	1	0
K-9 Presentations - Maertens	0	0	0	0	0	0	3	5	0	1	1	0	10	1
<b>Total K-9 Presentations</b>	<b>0</b>	<b>0</b>	<b>0</b>	<b>0</b>	<b>0</b>	<b>1</b>	<b>3</b>	<b>5</b>	<b>0</b>	<b>1</b>	<b>1</b>	<b>0</b>	<b>11</b>	<b>1</b>
<b>Total K-9 Deployments</b>	<b>9</b>	<b>7</b>	<b>8</b>	<b>5</b>	<b>8</b>	<b>1</b>	<b>2</b>	<b>3</b>	<b>1</b>	<b>12</b>	<b>5</b>	<b>1</b>	<b>62</b>	<b>5</b>
Vehicle Seizures	0	0	0	0	0	0	0	0	0	0	0	0	0	0
Cash Seizures	0	0	0	0	0	0	0	0	0	0	0	0	0	0
Marijuana Arrests	1	0	0	0	2	0	0	0	0	0	0	0	3	0
Controlled Substances Arrests	1	0	1	3	6	2	0	1	0	0	1	0	15	1
Drug Paraphernalia Arrests	4	0	3	3	3	2	0	1	0	0	1	0	17	1
Pos/Dist In a Drug Free Zone	0	0	0	0	0	0	0	0	0	0	0	0	0	0
Ingesting Arrests	1	0	1	0	3	1	0	0	0	0	0	0	6	1





# Watertown Police Department



## Volunteers In Policing

### Explorers

Explorers	Jan	Feb	Mar	Apr	May	Jun	July	Aug	Sept	Oct	Nov	Dec	Total	Mo Avg
Police Explorer Hours	30	30	30	35	30	24	37	122	0	20	20	24	402	34

### Camp Chance

Camp Chance	Jan	Feb	Mar	Apr	May	Jun	July	Aug	Sept	Oct	Nov	Dec	Total	Mo Avg
Camp Chance (by Citizens)	0	0	0	0	0	0	0	0	0	0	0	0	0	-
Camp Chance (by WPD)	0	0	0	0	0	0	0	0	0	0	0	0	0	-

### Reserves

Reserves	Jan	Feb	Mar	Apr	May	Jun	July	Aug	Sept	Oct	Nov	Dec	Total	Mo Avg
Police Reserves Hours	25	13	22	26	28	8	39.5	43	20.5	27.5	49.5	55	357	30



