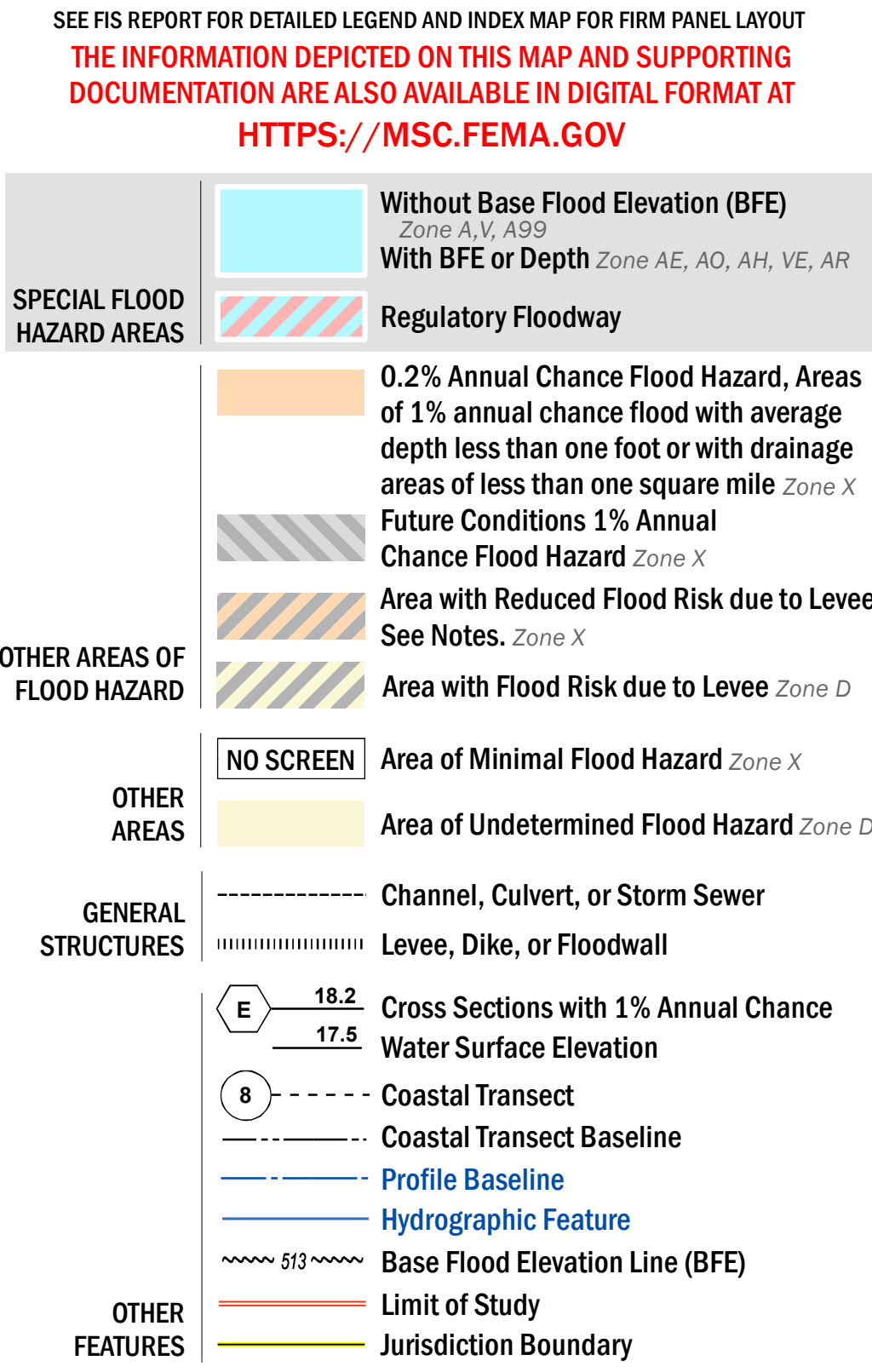


FLOOD HAZARD INFORMATION



NOTES TO USERS

For information and questions about this Flood Insurance Rate Map (FIRM), available products associated with this FIRM, including historic versions, the current map date for each FIRM panel, how to order products, or the National Flood Insurance Program (NFIP) in general, please call the FEMA Mapping and Insurance eXchange at 1-877-FEMA-MAP (1-877-336-2627) or visit the FEMA Flood Map Service Center website at <https://msc.fema.gov>. Available products may include previously issued Letters of Map Change, a Flood Insurance Study Report, and/or digital versions of this map. Many of these products can be ordered or obtained directly from the website.

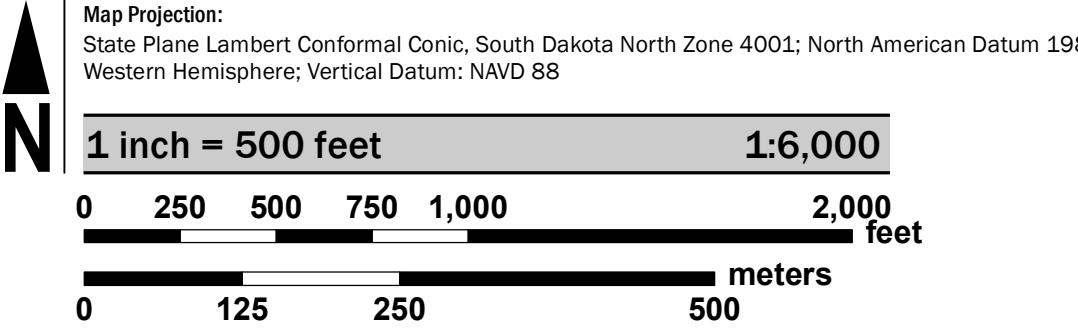
Communities annexing land on adjacent FIRM panels must obtain a current copy of the adjacent panel as well as the current FIRM Index. These may be ordered directly from the Flood Map Service Center at the number listed above.

For community and countywide map dates refer to the Flood Insurance Study Report for this jurisdiction.

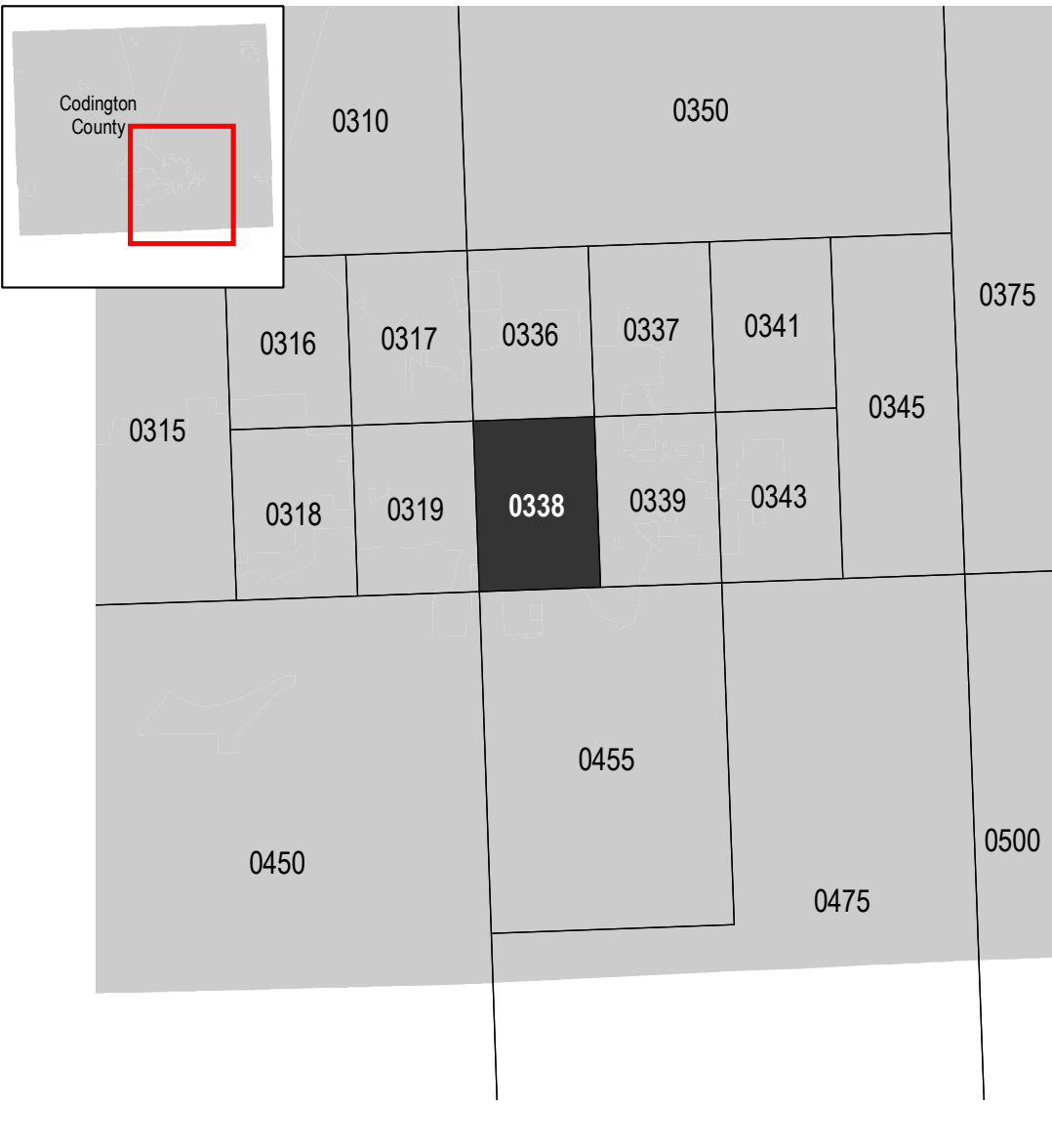
To determine if flood insurance is available in this community, contact your insurance agent or call the National Flood Insurance Program at 1-800-638-6620.

Base map information shown on the FIRM was derived from digital data obtained from the U.S. Census Bureau, South Dakota Department of Revenue, South Dakota Fish, Game & Parks, U.S. Bureau of Land Management, South Dakota Department of Transportation, Sisseton Wahpeton Oyate Tribe, and the U.S. Geological Survey.

SCALE



PANEL LOCATOR



National Flood Insurance Program

NATIONAL FLOOD INSURANCE PROGRAM
FLOOD INSURANCE RATE MAP
CODINGTON COUNTY,
SOUTH DAKOTA
and Incorporated Areas

PANEL 338 OF 500

Panel Contains:
COMMUNITY
CODINGTON COUNTY
WATERTOWN, CITY OF

NUMBER	PANEL	SUFFIX
460260	0338	E
460016	0338	E

**REVISED
PRELIMINARY
3/29/2024**

VERSION NUMBER
2.6.4.6

MAP NUMBER
46029C0338E

MAP REVISED