

Sample Ballot - Republican Party Primary  
Burke County, North Carolina  
March 3, 2026

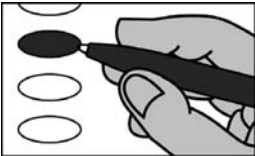
R0032



PCT: 0001\_DREXEL 01

BALLOT MARKING INSTRUCTIONS

- A. With the marking device provided or a black ball point pen, completely fill in the oval to the left of each candidate or selection of your choice as shown.
- B. If you tear, deface or wrongly mark this ballot, return it to request a replacement.



PARTISAN NOMINATIONS		District Attorney District 36 (You may vote for ONE)
US Senate (You may vote for ONE)	<div><div></div> Mitch Walker</div> <div><div></div> Taylor A. Rockett</div>	
<div><div></div> Margot Dupre</div> <div><div></div> Richard Dansie</div> <div><div></div> Donald M. (Don) Brown</div> <div><div></div> Michael Whatley</div> <div><div></div> Elizabeth A. Temple</div> <div><div></div> Michele Morrow</div> <div><div></div> Thomas Johnson</div>	Burke County Board of Commissioners (You may vote for TWO)	
	<div><div></div> Shawn Freeman</div> <div><div></div> Randy Burns</div> <div><div></div> Phil Smith</div> <div><div></div> Tony Padgett</div>	
US House of Representatives District 14 (You may vote for ONE)	End of Ballot	
<div><div></div> Kate Barr</div> <div><div></div> Tim Moore</div>		
NC Court of Appeals Judge Seat 1 (You may vote for ONE)		
<div><div></div> Michael C. Byrne</div> <div><div></div> Matt Smith</div>		
NC Superior Court Judge District 36 Seat 1 (You may vote for ONE)		
<div><div></div> Tim Rooks</div> <div><div></div> Dale Hamby</div>		
NC District Court Judge District 36 Seat 5 (You may vote for ONE)		
<div><div></div> Amber Eades Crouch</div> <div><div></div> Gregory R. (Greg) Hayes</div>		