



# **Moss Landing Incident Preliminary Air Monitoring Summary**

---

January 17, 2025

Moss Landing, California

## 1.0 Introduction

On January 17, 2025, CTEH, LLC began conducting community air monitoring in the area surrounding the Moss Creek Battery Fire which began on January 16, 2025. Air monitoring was conducted to assess the potential community exposure to compounds which may be present during fires involving lithium batteries. This report summarizes data collected on January 17, 2025 from 05:30 to 17:30.\* During this monitoring period, all measurements were below site-specific action levels.

## 2.0 Real-time Air Monitoring

Real-time air monitoring refers to the use of direct-reading instruments to provide a near-instantaneous measurement of chemical concentration in the air. CTEH personnel developed and implemented a Preliminary Air Sampling and Analysis Plan (SAP) to characterize the nature and extent of the potential release.

Air monitoring efforts focused on monitoring hydrogen fluoride (HF), hydrogen chloride (HCl), carbon monoxide (CO), hydrogen cyanide (HCN), 2.5 µm particulate matter (PM<sub>2.5</sub>), along with percentage of the Lower Explosive Limit (%LEL). Measurements were recorded at heights representative of community breathing zones. All instrumentation was calibrated at least daily or per manufacturer’s recommendations.

### 2.1 Handheld Real-Time Monitoring Results

During this monitoring period, no detections of site-specific action levels occurred for the compounds measured in **Table 1**, except for PM<sub>2.5</sub> using handheld real-time monitoring equipment. The measured concentration of PM<sub>2.5</sub> remained below the site-specific action level of 0.138 mg/m<sup>3</sup> over a period of 15-minutes. **Appendix A** contains maps of monitoring locations by analyte.

**Table 1 Handheld Real-Time Air Monitoring Results**

Analyte	Count of Measurements	Count of Detections	Range of Measurements
CO	110	0	< 1 ppm
HCl	124	0	< 1 ppm
HCN	126	0	< 0.5 ppm
HF	71	0	< 0.4 ppm
%LEL	29	0	< 1 %
O <sub>2</sub>	28	28	20.9 %
PM <sub>2.5</sub>	118	117	0.001 - 0.042 mg/m <sup>3</sup>

*\*Analytes with no detections are reported as less than (<) the instrument’s Limit of Detection (LOD)  
ppm=parts-per-million*

*\* The data provided has not yet undergone full quality assurance and quality control (QAQC) processes and therefore is considered preliminary.*

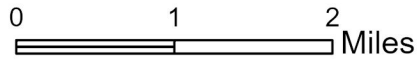
---

# Appendix A: Handheld Real-Time Air Monitoring Locations

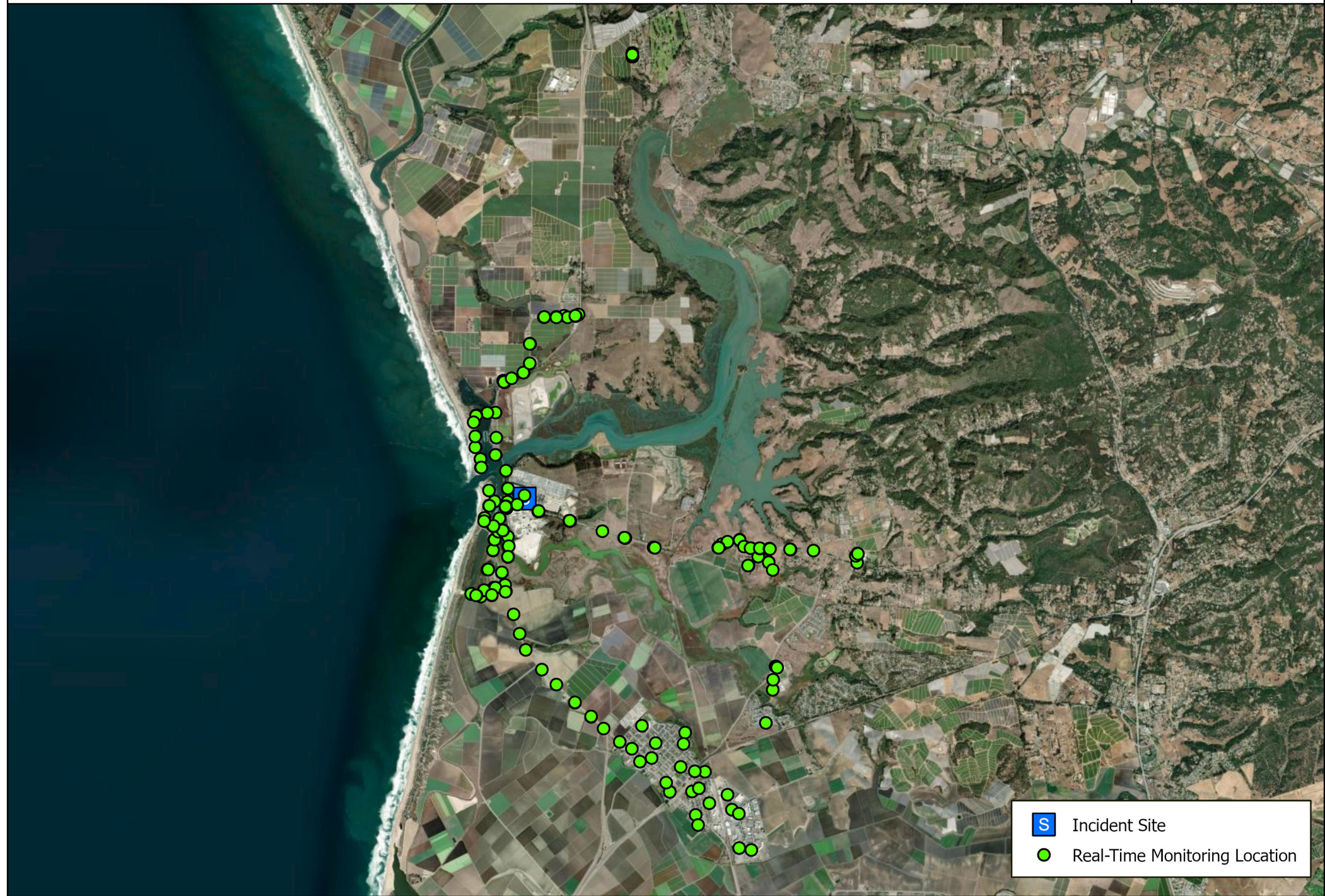


# Handheld Real-Time Air Monitoring | Community Monitoring

Moss Landing Incident | January 15, 2025 05:34 - 17:30



Project: PROJ-050399  
Client: Vistra Corp.  
City: Moss Landing, CA  
County: Monterey



	Incident Site
	Real-Time Monitoring Location