

300+ AC IRRIGATED, CROPLAND & CREEKBOTTOM

ABSOLUTE

LAND AUCTION

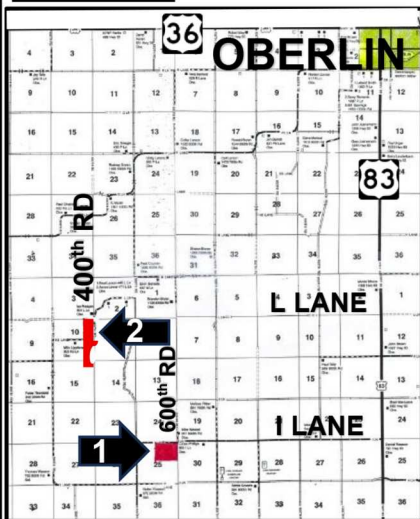
DECATUR COUNTY, KANSAS

FRI., JAN. 30, 2026 @ 10:30 AM, CST

AUCTION LOCATION:

GATEWAY CIVIC CENTER, OBERLIN, KS

SELLER: LARSON LAND & CATTLE LLC



LEGAL DESCRIPTIONS:

TR 1: NE/4 of Sec 25-4-30

- 158.75 ac cropland
- All Wheat to Buyer.

TR 2: E/2E/2 of Sec 10-4-30, less a tract, PLUS tracts in 11-4-30 & 15-4-30

- 118.47 ac cropland & 18.72+ ac grass
- No growing crops
- Imm possession

MINERAL RIGHTS: All Sellers's interest to Buyers.

IRRIGATION INFO:

Tract 2 includes 2 pivots, wells & pumps. Call for water right information.

Follow us on social media



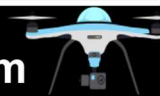
CALL DON HAZLETT @ 785-443-1299

ON-LINE & PHONE BIDDING ALSO AVAILABLE.

REGISTER @ www.farmandranchrealty.com

FOR SALE BILL & DRONE VIDEO VISIT

www.farmandranchrealty.com



FARM & RANCH REALTY, INC.

PO BOX 947 • COLBY, KS 67701



800-247-7863

DONALD L. HAZLETT, Broker/Auctioneer



"When you list with Farm & Ranch, it's as good as SOLD!" 