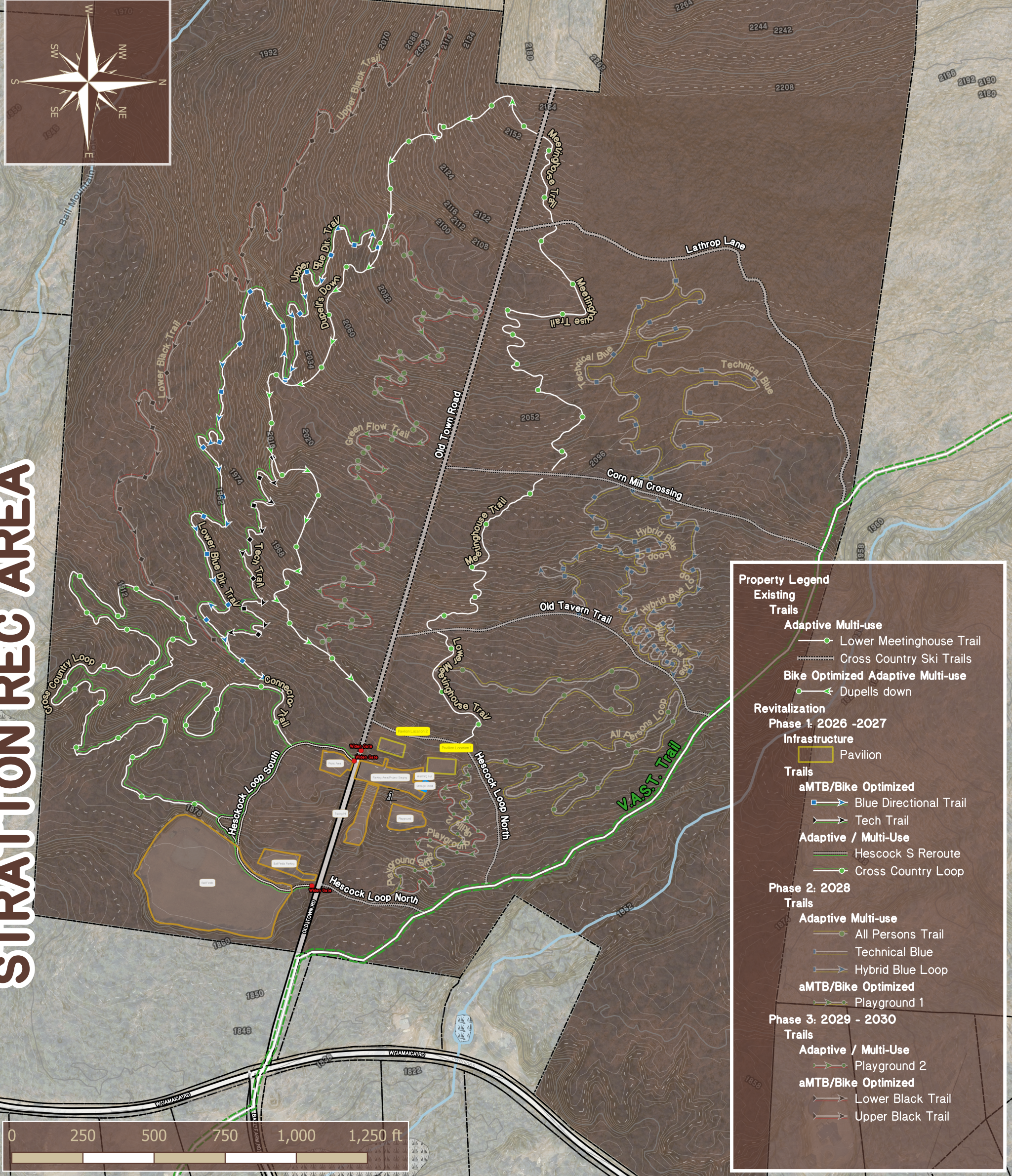


STRATTON REC AREA



Property Legend

Existing Trails

- Adaptive Multi-use
 - Lower Meetinghouse Trail
 - Cross Country Ski Trails
- Bike Optimized Adaptive Multi-use
 - Dupells down

Revitalization

Phase 1: 2026 -2027

Infrastructure

- Pavilion

Trails

- aMTB/Bike Optimized
 - Blue Directional Trail
 - Tech Trail
- Adaptive / Multi-Use
 - Hescock S Reroute
 - Cross Country Loop

Phase 2: 2028

Trails

- Adaptive Multi-use
 - All Persons Trail
 - Technical Blue
 - Hybrid Blue Loop
- aMTB/Bike Optimized
 - Playground 1

Phase 3: 2029 - 2030

Trails

- Adaptive / Multi-Use
 - Playground 2
- aMTB/Bike Optimized
 - Lower Black Trail
 - Upper Black Trail

TRAIL RATINGS

<p>Easiest</p> <p>TREAD WIDTH: (54"/60") TREAD SURFACE: Machine built, Firm and stable FEATURES: Small Rollers and low banked turns.</p>	<p>Easier</p> <p>TREAD WIDTH: (48"/54") TREAD SURFACE: Machine built, Firm and Stable FEATURES: Rollers, Small Berms</p>	<p>Difficult</p> <p>TREAD WIDTH: (48"/54") TREAD SURFACE: Machine built or Natural Mostly stable, Some variability FEATURES: All features are optional or rollable</p>	<p>More Difficult</p> <p>TREAD WIDTH: (24"/54") TREAD SURFACE: Machine built or Natural, Mostly stable, Some variability FEATURES: Mandatory features have go arounds</p>	<p>Most Difficult</p> <p>TREAD WIDTH: (20"/54") TREAD SURFACE: Widely variable FEATURES: All features are mandatory, Adaptive users may require assistance.</p>
---	---	---	--	--