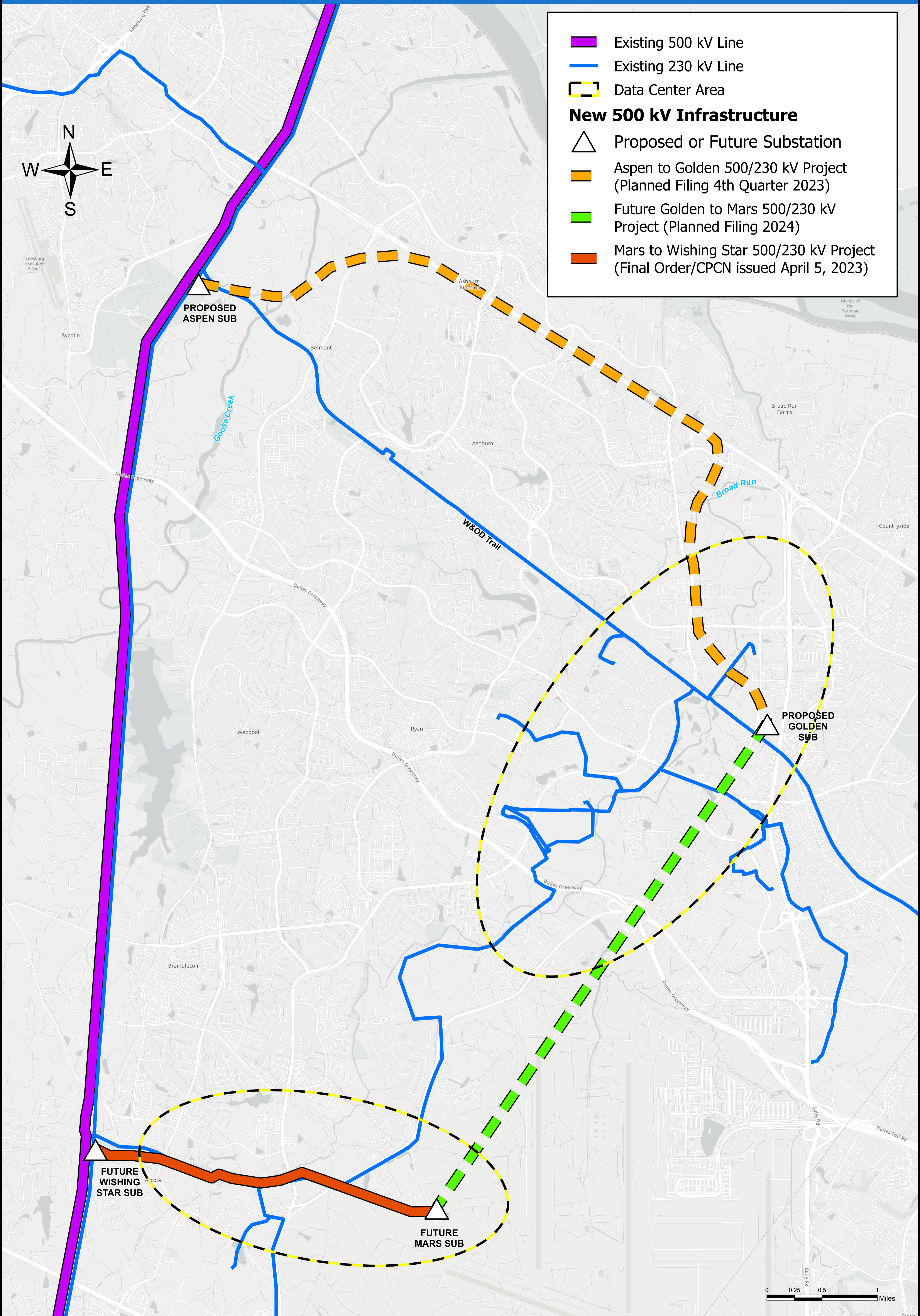


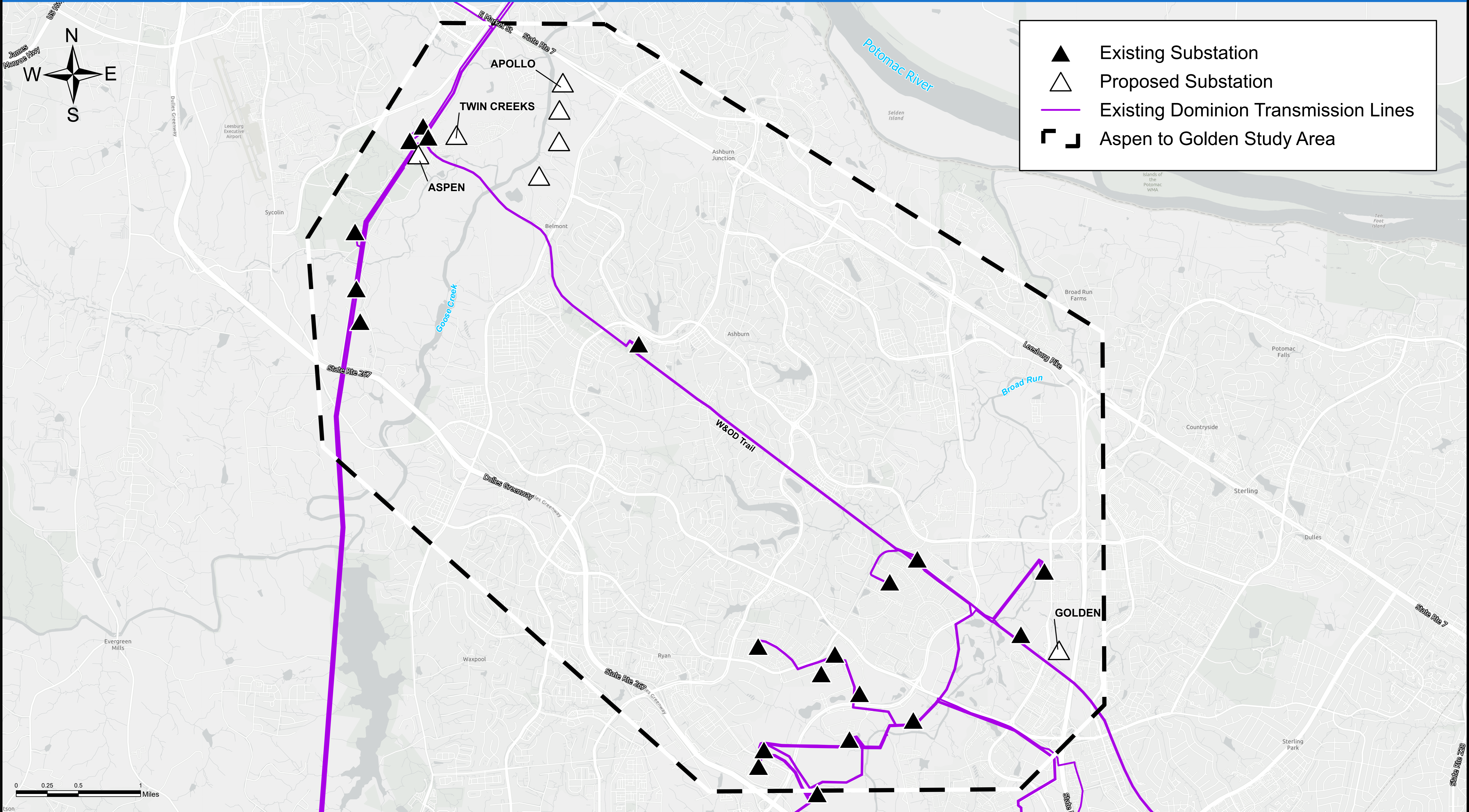
Loudoun Reliability Projects Overview



- Existing 500 kV Line
- Existing 230 kV Line
- Data Center Area
- New 500 kV Infrastructure**
- Proposed or Future Substation
- Aspen to Golden 500/230 kV Project (Planned Filing 4th Quarter 2023)
- Future Golden to Mars 500/230 kV Project (Planned Filing 2024)
- Mars to Wishing Star 500/230 kV Project (Final Order/CPCN issued April 5, 2023)

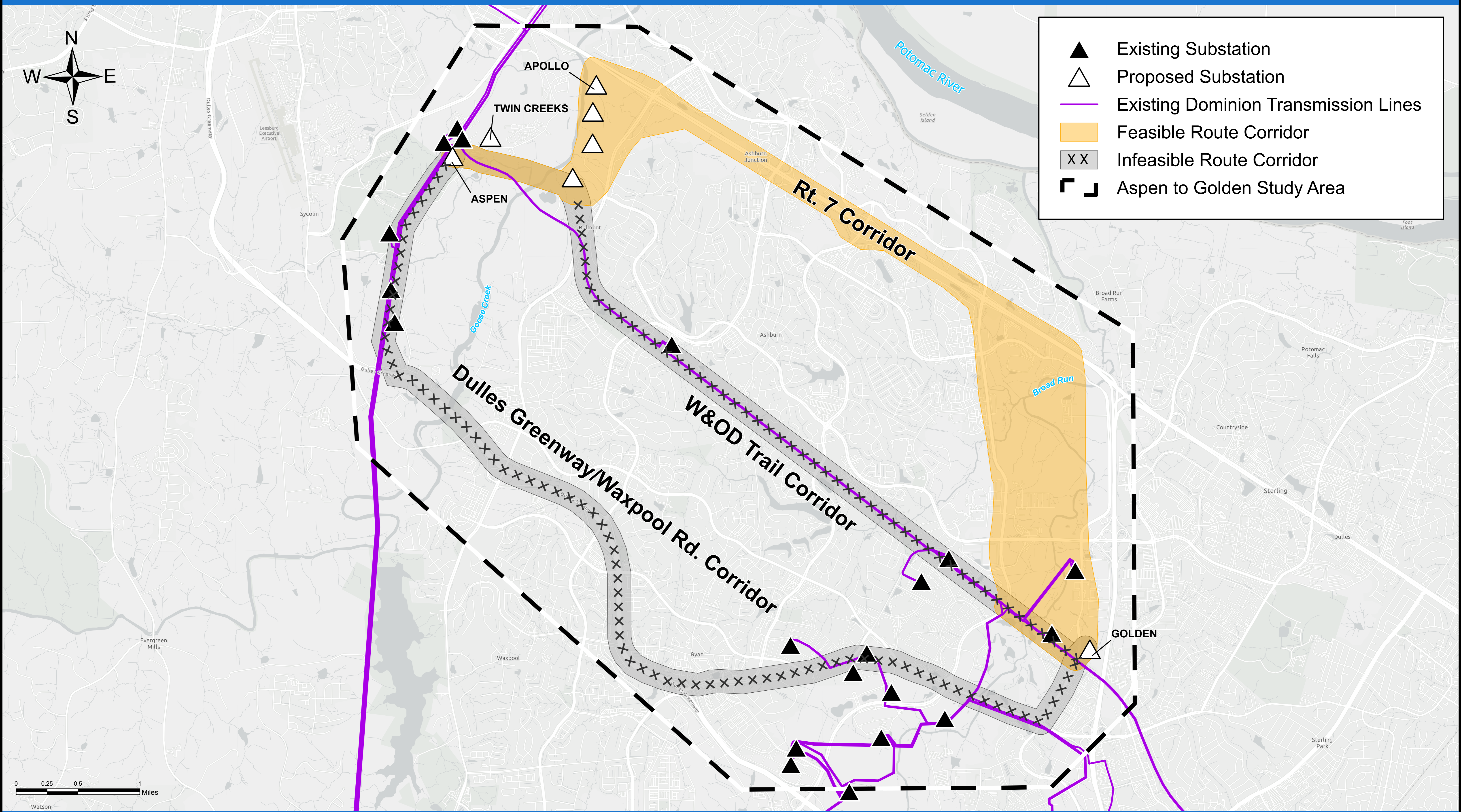
Aspen to Golden 500/230 kV Electric Transmission Line Project

Study Area

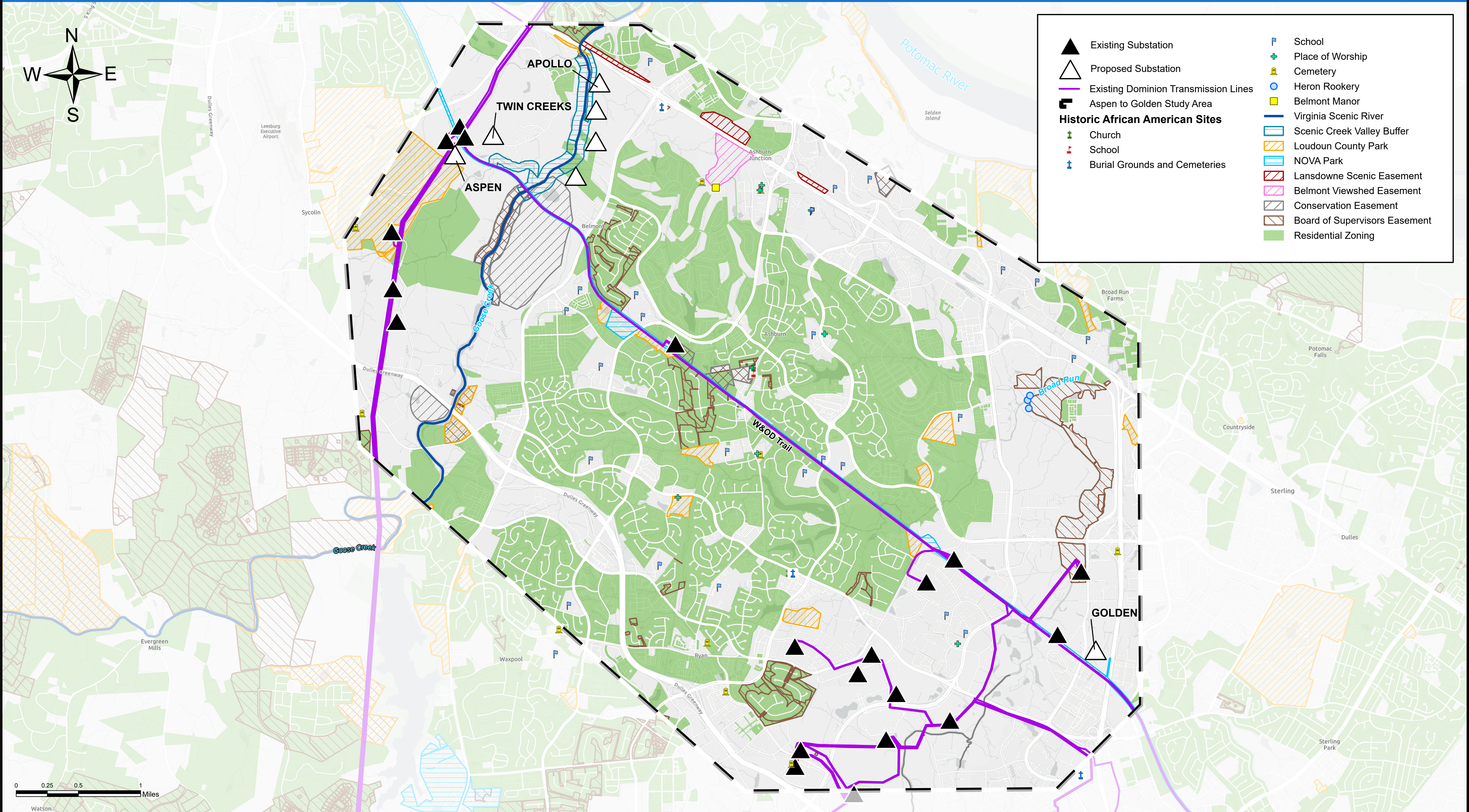


- ▲ Existing Substation
- △ Proposed Substation
- Existing Dominion Transmission Lines
- ┌ └ Aspen to Golden Study Area

Route Corridors Studied

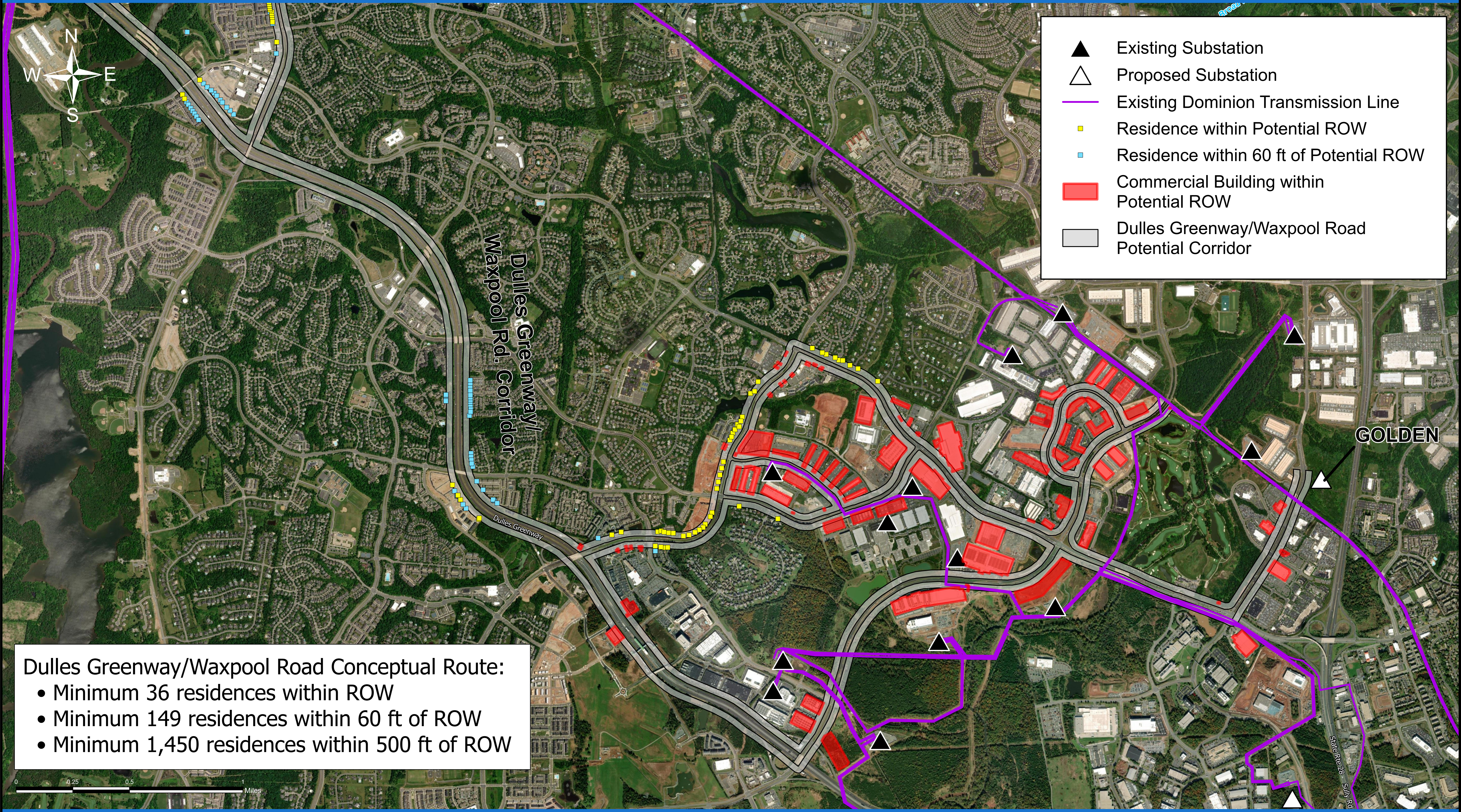


Routing Constraints



Aspen to Golden 500/230 kV Electric Transmission Line Project

Dulles Greenway/Waxpool Road Corridor Constraints

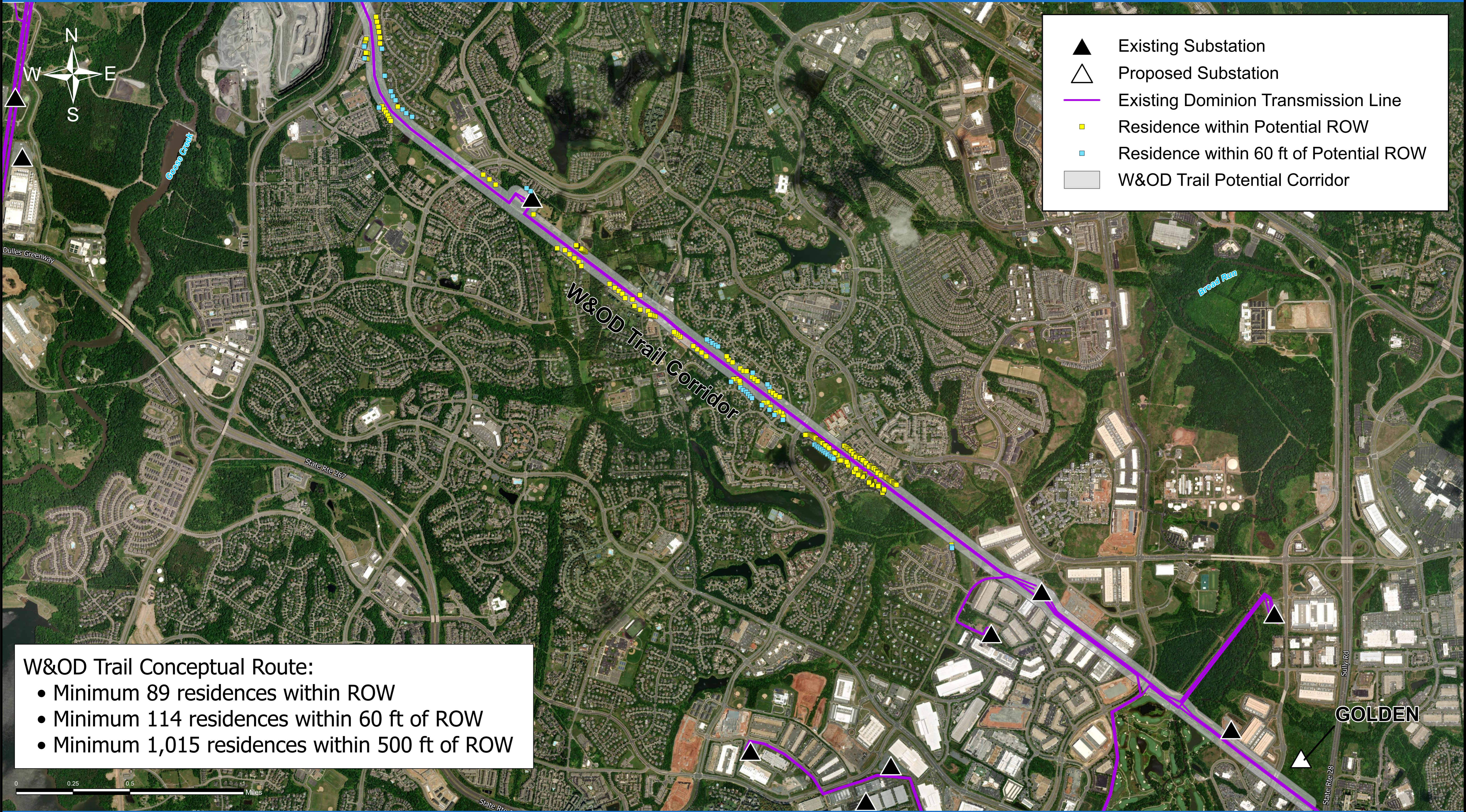


- ▲ Existing Substation
- △ Proposed Substation
- Existing Dominion Transmission Line
- Residence within Potential ROW
- Residence within 60 ft of Potential ROW
- Commercial Building within Potential ROW
- Dulles Greenway/Waxpool Road Potential Corridor

Dulles Greenway/Waxpool Road Conceptual Route:

- Minimum 36 residences within ROW
- Minimum 149 residences within 60 ft of ROW
- Minimum 1,450 residences within 500 ft of ROW

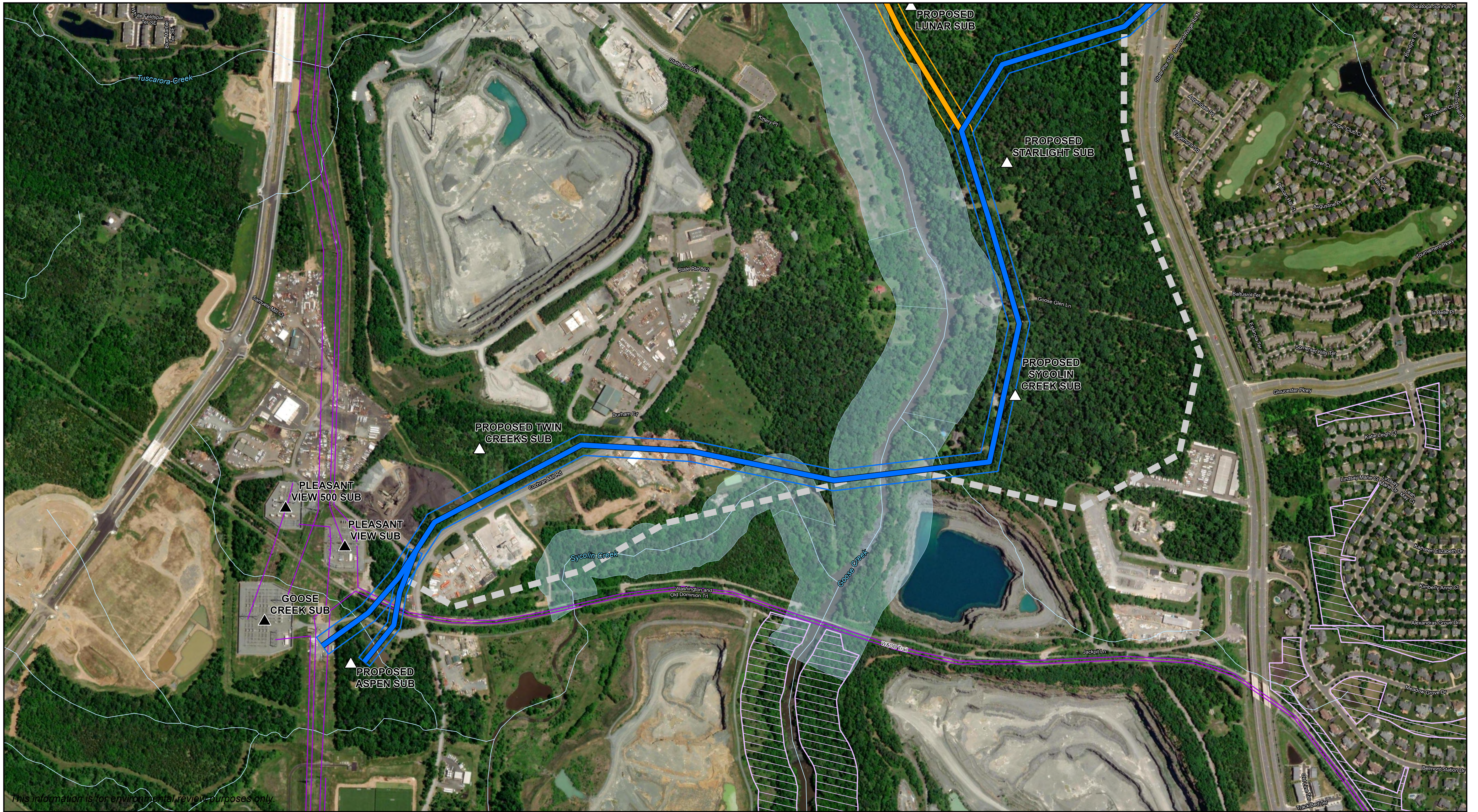
W&OD Trail Corridor Constraints



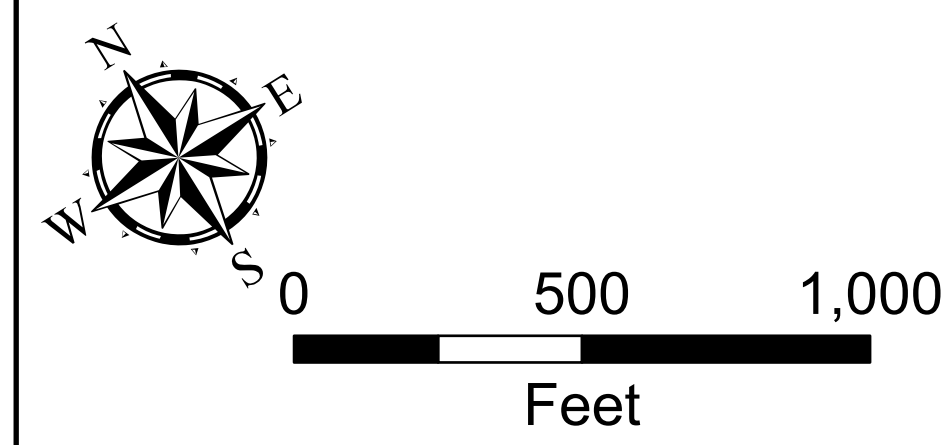
- ▲ Existing Substation
- △ Proposed Substation
- Existing Dominion Transmission Line
- Residence within Potential ROW
- Residence within 60 ft of Potential ROW
- W&OD Trail Potential Corridor

W&OD Trail Conceptual Route:

- Minimum 89 residences within ROW
- Minimum 114 residences within 60 ft of ROW
- Minimum 1,015 residences within 500 ft of ROW



This information is for environmental review purposes only.



Current Route Alternatives

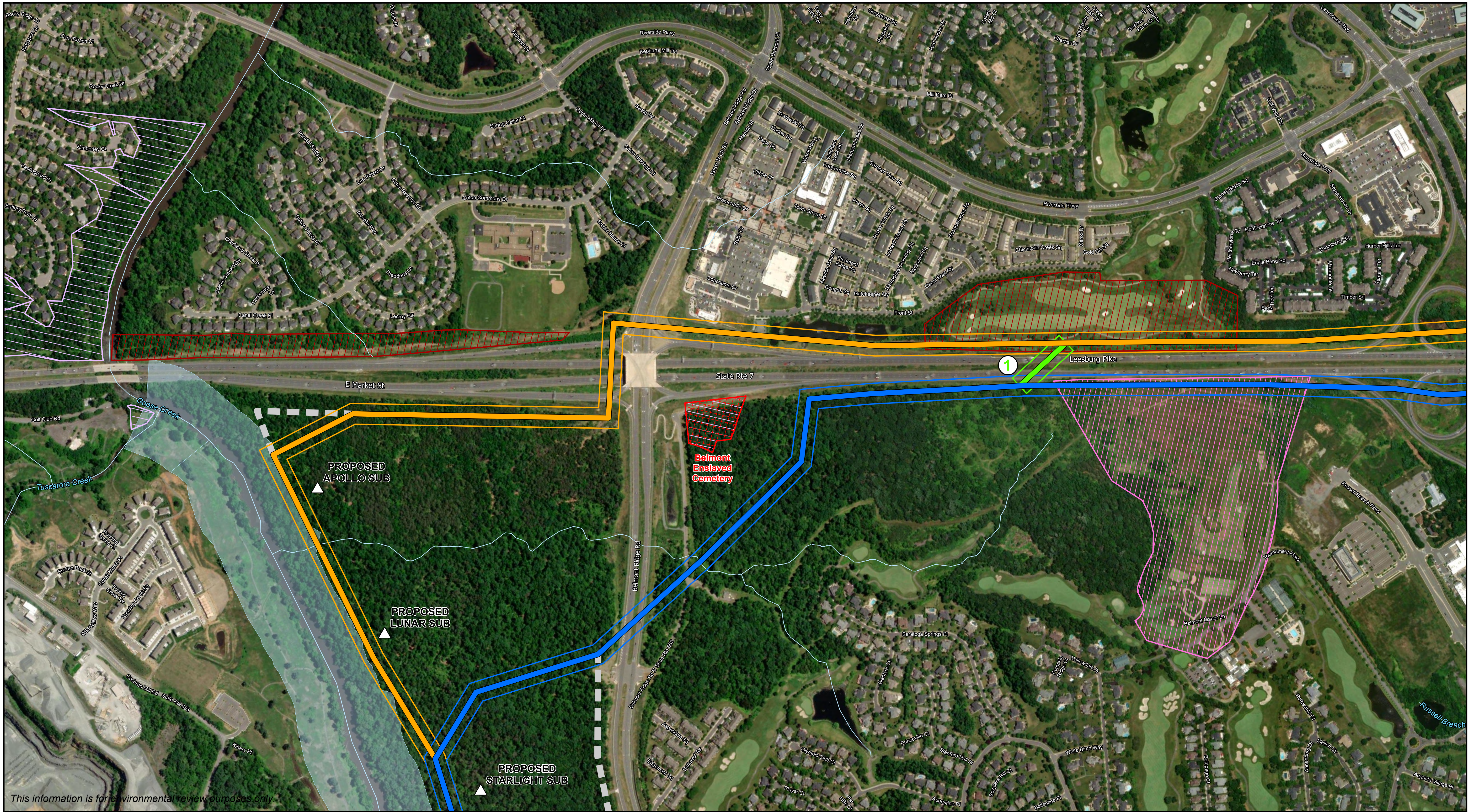
- ▬▬▬ Aspen to Golden 500/230 kV Rt. 7 South
- ▬▬▬ Aspen to Golden 500/230 kV Rt. 7 North

- ▲ Existing Substation
- △ Proposed Substation
- ▭ Previously Considered Route
- ▬▬▬ Existing Dominion Transmission Lines
- ▬▬▬ Waterbody
- ▭ Board of Supervisors Easement
- ▭ Scenic Creek Valley Buffers

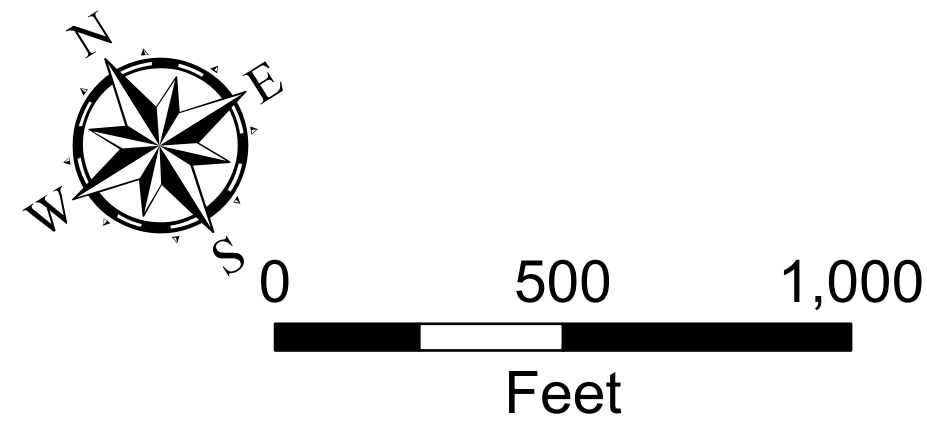


**Aspen to Golden 500/230 kV
Electric Transmission Line Project
Loudoun County, Virginia**
August 29th, 2023
Page 1





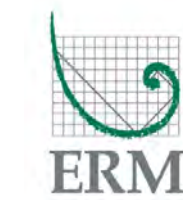
This information is for environmental review purposes only.



Current Route Alternatives

- ▬ Aspen to Golden 500/230 kV Rt. 7 South
- ▬ Aspen to Golden 500/230 kV Rt. 7 North
- ▬ Rt. 7 Crossing Options

- △ Proposed Substation
- ▬ Previously Considered Route
- ▬ Waterbody
- ▬ Belmont Enslaved Cemetery
- ▬ Belmont Viewshed Easement
- ▬ Lansdowne Scenic Easement
- ▬ Board of Supervisors Easement
- ▬ Scenic Creek Valley Buffers



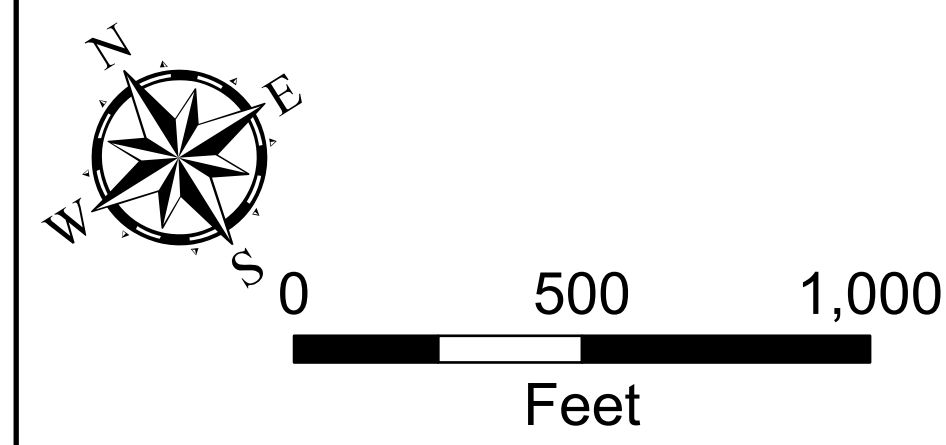
**Aspen to Golden 500/230 kV
Electric Transmission Line Project
Loudoun County, Virginia**

August 29th, 2023
Page 2





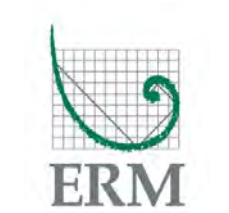
This information is for environmental review purposes only



Current Route Alternatives

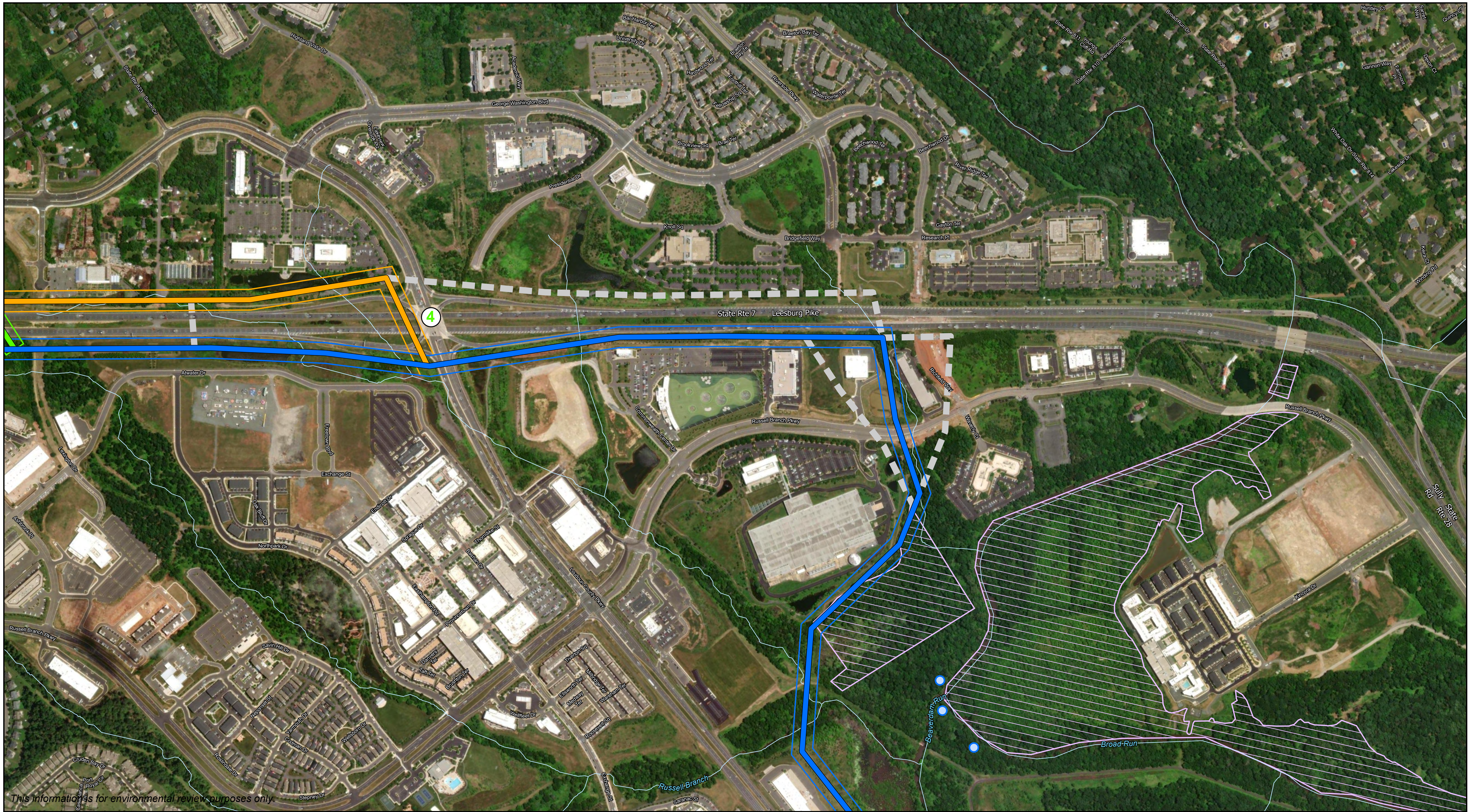
- Aspen to Golden 500/230 kV Rt. 7 South
- Aspen to Golden 500/230 kV Rt. 7 North
- Rt. 7 Crossing Options

- Previously Considered Route
- Waterbody
- Belmont Viewshed Easement
- Lansdowne Scenic Easement
- Board of Supervisors Easement

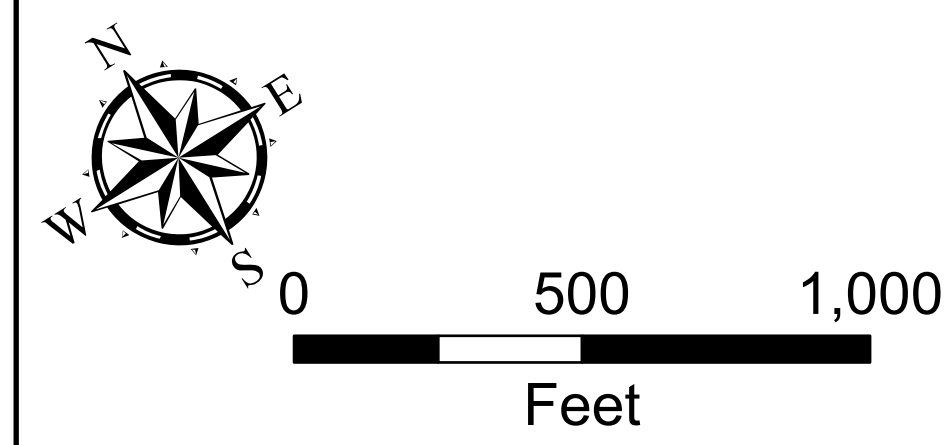


**Aspen to Golden 500/230 kV
Electric Transmission Line Project
Loudoun County, Virginia**
August 29th, 2023
Page 3





This information is for environmental review purposes only.



Current Route Alternatives

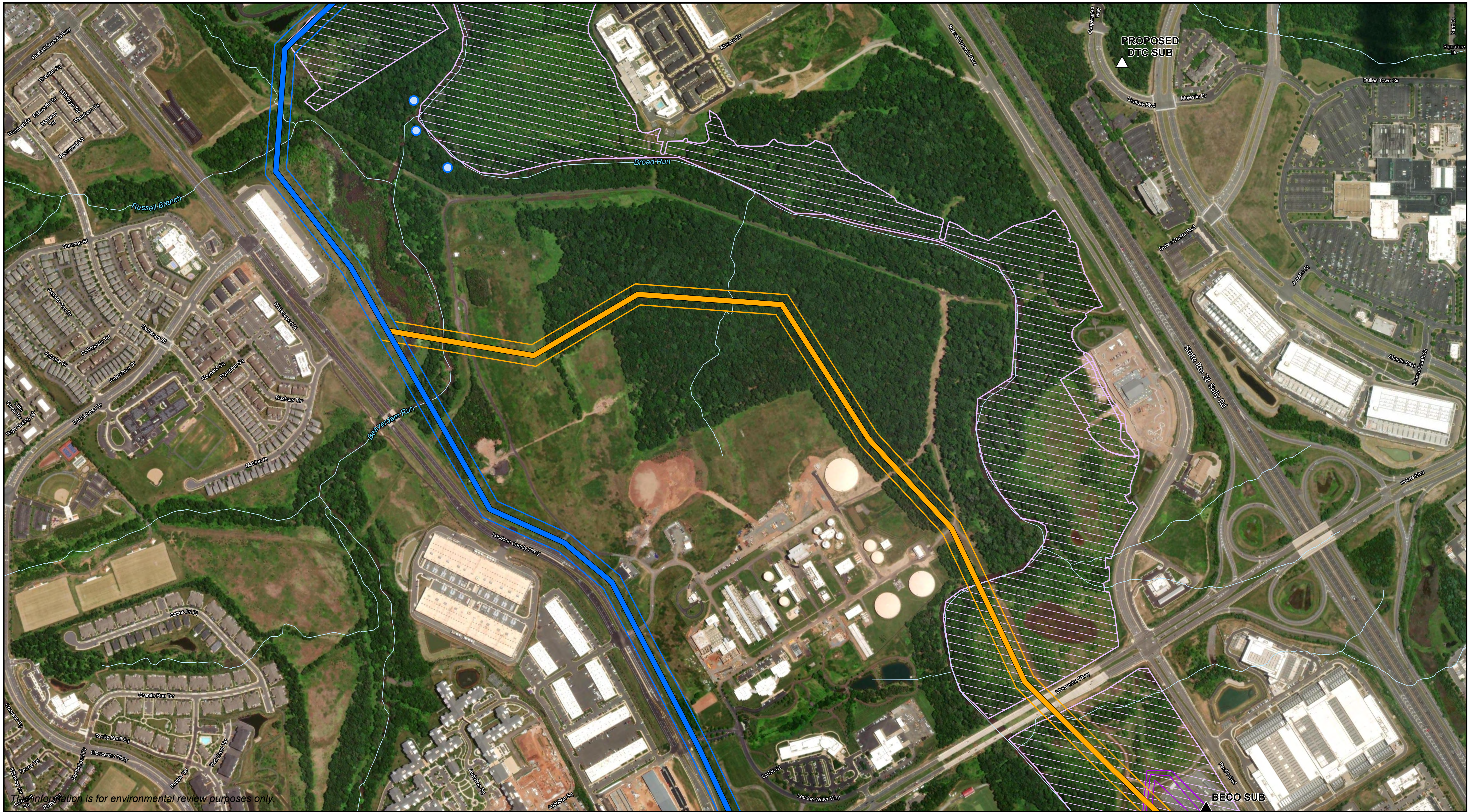
- ▬ Aspen to Golden 500/230 kV Rt. 7 South
- ▬ Aspen to Golden 500/230 kV Rt. 7 North
- ▬ Rt. 7 Crossing Options

- Heron Rookery
- ▬ Previously Considered Route
- ▬ Waterbody
- ▭ Board of Supervisors Easement

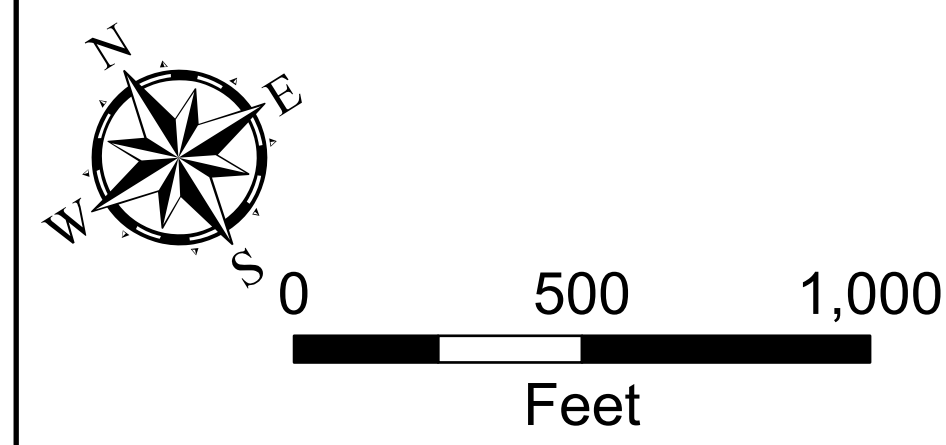


**Aspen to Golden 500/230 kV
Electric Transmission Line Project
Loudoun County, Virginia**
August 29th, 2023
Page 4





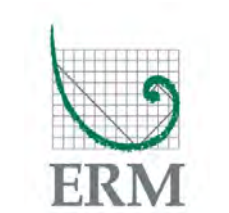
This information is for environmental review purposes only.



Current Route Alternatives

- ▬▬▬ Aspen to Golden 500/230 kV Rt. 7 South
- ▬▬▬ Aspen to Golden 500/230 kV Rt. 7 North

- ▲ Existing Substation
- △ Proposed Substation
- Heron Rookery
- ▬ Existing Dominion Transmission Lines
- ▬ Waterbody
- ▨ Board of Supervisors Easement



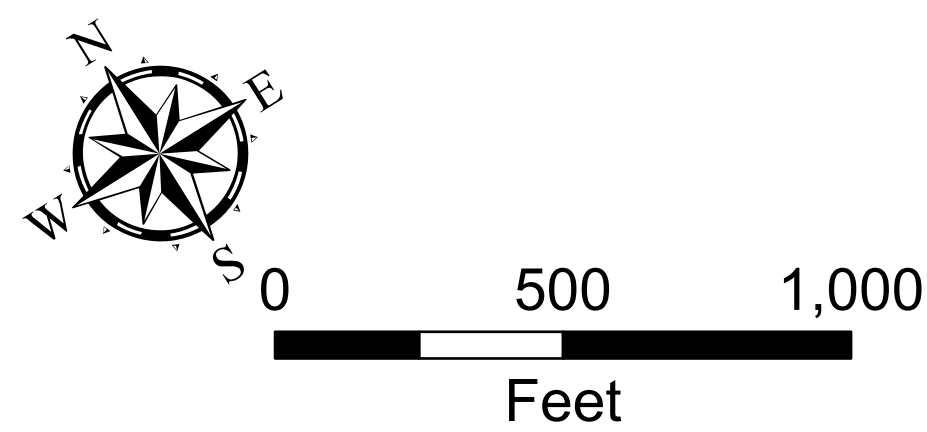
**Aspen to Golden 500/230 kV
Electric Transmission Line Project
Loudoun County, Virginia**

August 29th, 2023
Page 5





This information is for environmental review purposes only.



Current Route Alternatives

- ▬ Aspen to Golden 500/230 kV Rt. 7 South
- ▬ Aspen to Golden 500/230 kV Rt. 7 North

- ▲ Existing Substation
- ▬ Existing Dominion Transmission Lines
- ▬ Waterbody
- Previously Considered Route
- Board of Supervisors Easement



**Aspen to Golden 500/230 kV
Electric Transmission Line Project
Loudoun County, Virginia**

August 29th, 2023
Page 6

