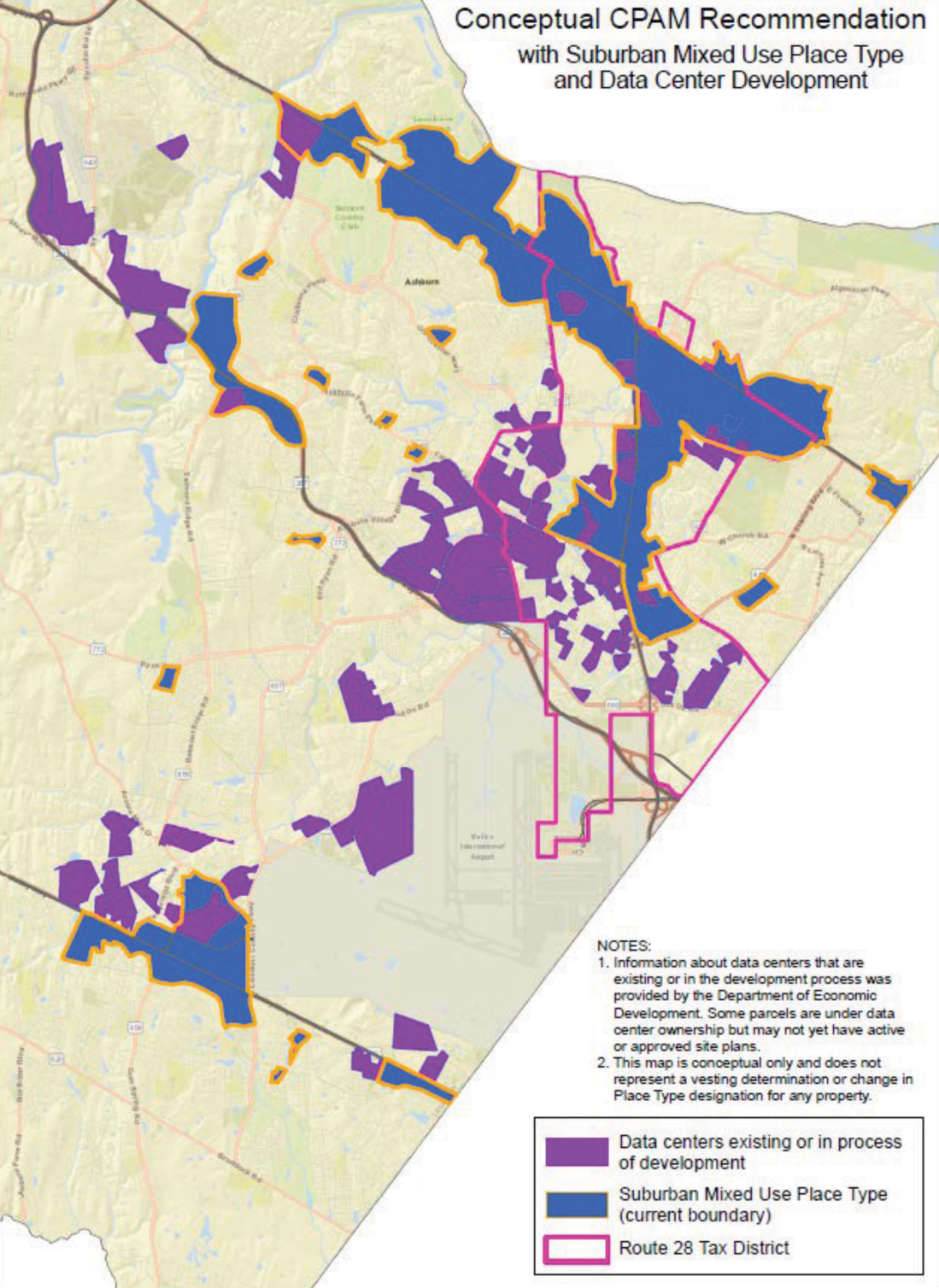





# Conceptual CPAM Recommendation with Suburban Mixed Use Place Type and Data Center Development



## NOTES:

1. Information about data centers that are existing or in the development process was provided by the Department of Economic Development. Some parcels are under data center ownership but may not yet have active or approved site plans.
2. This map is conceptual only and does not represent a vesting determination or change in Place Type designation for any property.

-  Data centers existing or in process of development
-  Suburban Mixed Use Place Type (current boundary)
-  Route 28 Tax District