

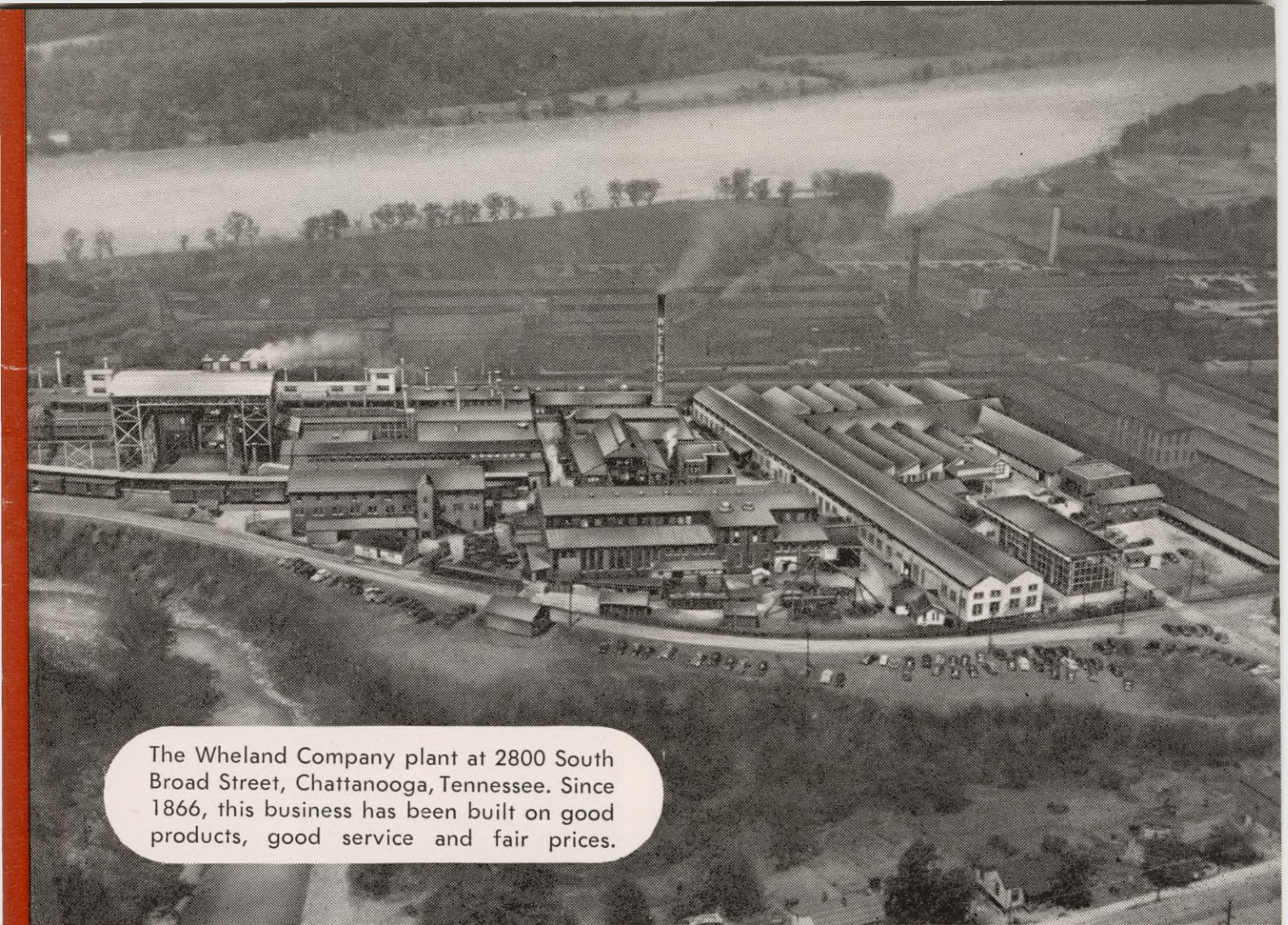


THIS BOOK IS PRESENTED TO

WHO IS A MEMBER OF

THE WHELAND ORGANIZATION

BY



The Wheland Company plant at 2800 South Broad Street, Chattanooga, Tennessee. Since 1866, this business has been built on good products, good service and fair prices.

WHELAND
FACTS
for
WHELAND
PEOPLE

THE WHELAND COMPANY, CHATTANOOGA, TENNESSEE, U. S. A.

All of us who work together at Wheland are interested in what the company is doing and what its prospects are for the future.

One of the jobs of the people in the front office is to tell all of us the things that happen that are important to us.

This book will tell you how the company started and how it grew. It will tell you what Wheland does, what The Wheland Organization expects from you and what you can expect from Wheland.

This book gives you the story up to date. When new things develop which are important to you, you will be told as soon as the real facts are known.



Index

Castings	14
Employee Responsibility	17
Employment, Stability of	31
History, Wheland	11
Holidays	30
Hours of Work	30
Information, Company	31
Insurance	28
Learning Your Job	31
Medical Services	28
New People	28
Oil Well Drilling	
Equipment	15
Pay	29
Pay Deductions	29
Pensions and Retirement	30
Personnel	
Baker, Elgia	14
Barnes, Stephen M.	34
Black, J. E.	18
Buttram, W. F.	15
Campbell, George E.	18
Carlton, J. B.	23
Chandler, William	27
Christie, Robert	19
Clark, Cecil	27
Cravens, William M.	33
Deakins, John A.	19
Dewey, Guy V.	33
Dickert, W. B.	13
Durham, Ralph	19
Elmore, L. C.	14
Franklin, T. A.	33
Gilley, Monjay	25
Griscom, H. F.	6
Hargraves, Thomas	19
Heiskell, Harry	24
Hester, J. T., Jr.	20
Hill, Lelon	21
Holcomb, John	20
Hollingshead, L. E.	34
Huff, Earl	20
Huff, H. U.	21
Inman, Verlin	24
Johnson, S. W.	7
Kilgore, Elmer	26

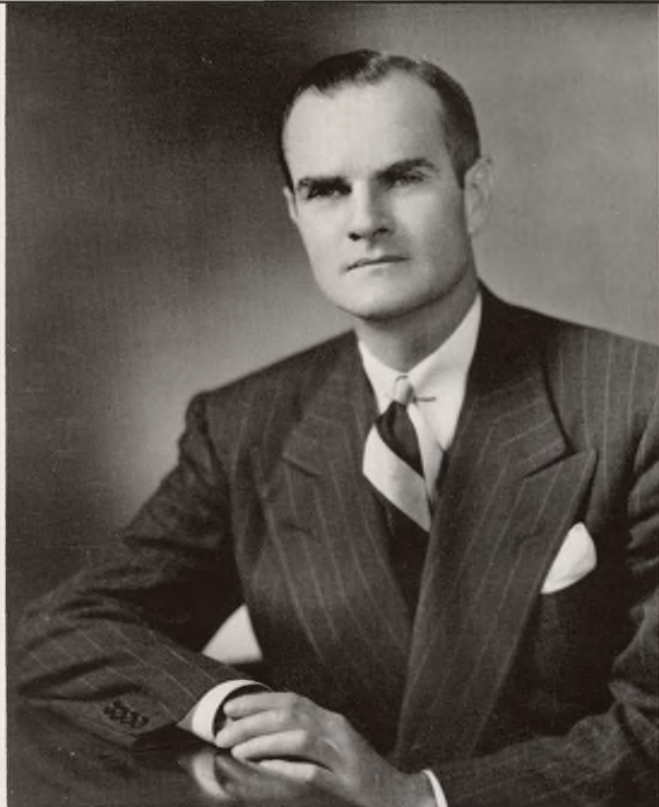
Personnel	
Kinton, Mrs. Marie	26
Landgrebe, K. L., Jr.	7
Lay, C. C.	7
Lyle, Edward A.	21
Malicoat, A. E.	21
Martin, C. O.	20
Moore, Harry	34
Parmley, Carl	24
Parson, Fred W.	27
Poston, McCracken (Mac)	24
Pringle, Claude	14
Pughe, Earle W.	6
Ramsey, Austin	22
Raper, Jack D.	22
Russ, O. W.	17
Shafer, Ralph E.	22
Sivley, Grace	26
Skidmore, James E.	23
Smith, Gordon	27
Smith, Roy	23
Sneed, William J.	34
Stephens, F. H.	7
Stevenson, E. L.	25
Stewart, Lawrence	25
Stoner, William M.	15
Street, Gordon P.	5
Tanner, Will T.	25
Varnell, Forrest D.	26
Westbrook, T. W.	23
Wheland, C. W.	6
Wheland, E. F.	9
Wheland, George W.	8
Wheland, Z. W.	9
White, Francis E.	22
Williams, J. P.	33
Plant Pictures	1, 10
Policy, Company	16
Products, Wheland	14
Prospects, Company	32
Safety	31
Sawmills	14
Supervision	31
Vacations, Paid	30
Working Conditions	30

.....

The Wheland Company is a good place to work. It is one of the oldest and best established businesses in the South. The Company is respected because it has earned respect. And Wheland People are respected because they have earned respect.

The Wheland Company makes grey iron castings, sawmill machinery, and oil well drilling equipment. Most of our customers are located a long way from us. These customers could buy these products from companies nearer to them than Wheland, but by working together, and by doing a better job, we at Wheland have been able to offer the customer better goods and better service. As long as we work together to give our customers better value, our future will bring more business and more jobs.

Gordon P. Street



GORDON P. STREET
President

Gordon P. Street is a native Chattanooga. In 1914, at the age of 12, he became an office boy for The Wheland Company. Later he worked in the foundry and the machine shop. After his early experience in the Wheland office and plant, Mr. Street joined his father, who was founder of Street Brothers Machine Works. This company has always been closely associated with Wheland Company.

Mr. Street remained with Street Brothers until 1928, when he moved to Brownsville, Texas, to become active in the banking business. He returned to Chattanooga in 1933, and was again affiliated with his father.

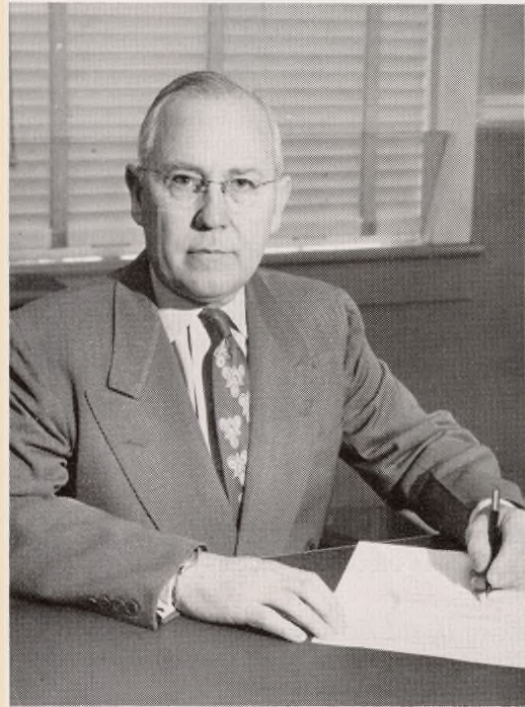
After World War II, Mr. Street became financially interested in The Wheland Company. In 1945 he was elected the company's third president.

Mr. Street is well known in the sawmill, oil drilling, automotive and banking circles of the country.

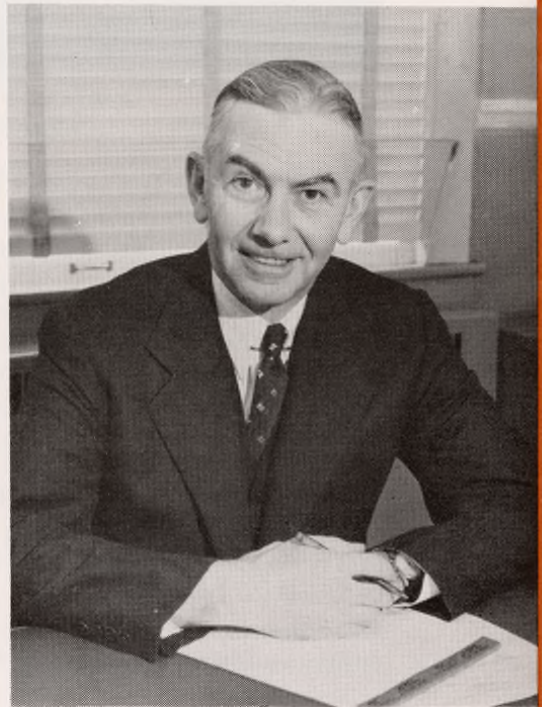
**WHELAND
EXECUTIVE
AND
ADMINISTRATIVE
GROUP**



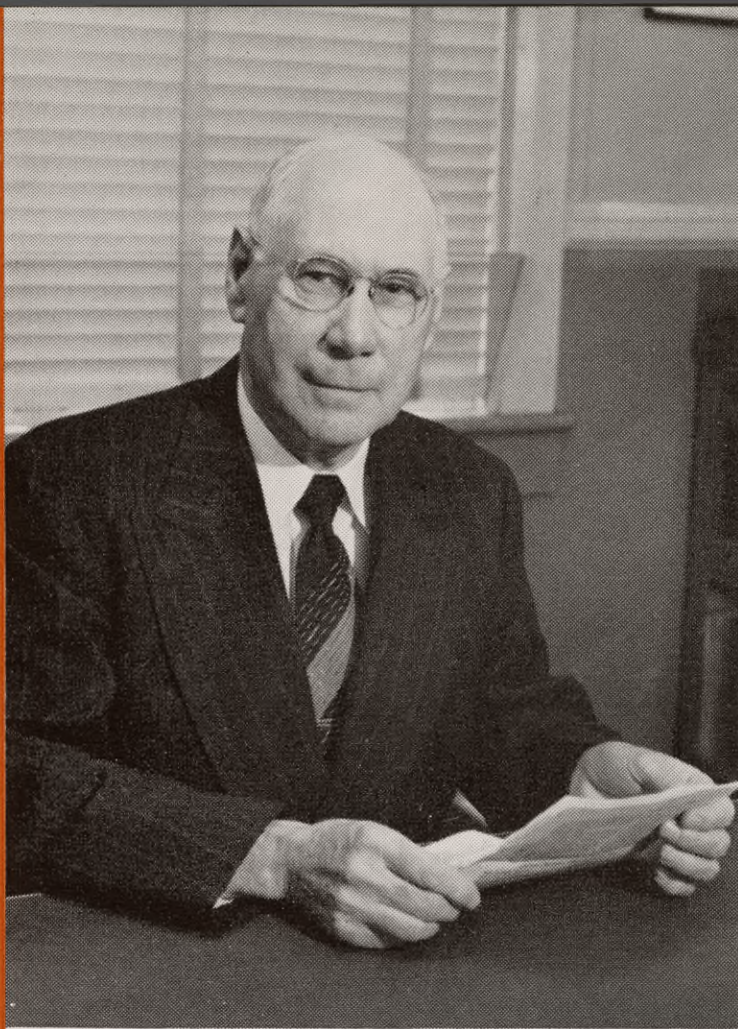
C. W. WHELAND
*Vice President
and Treasurer*



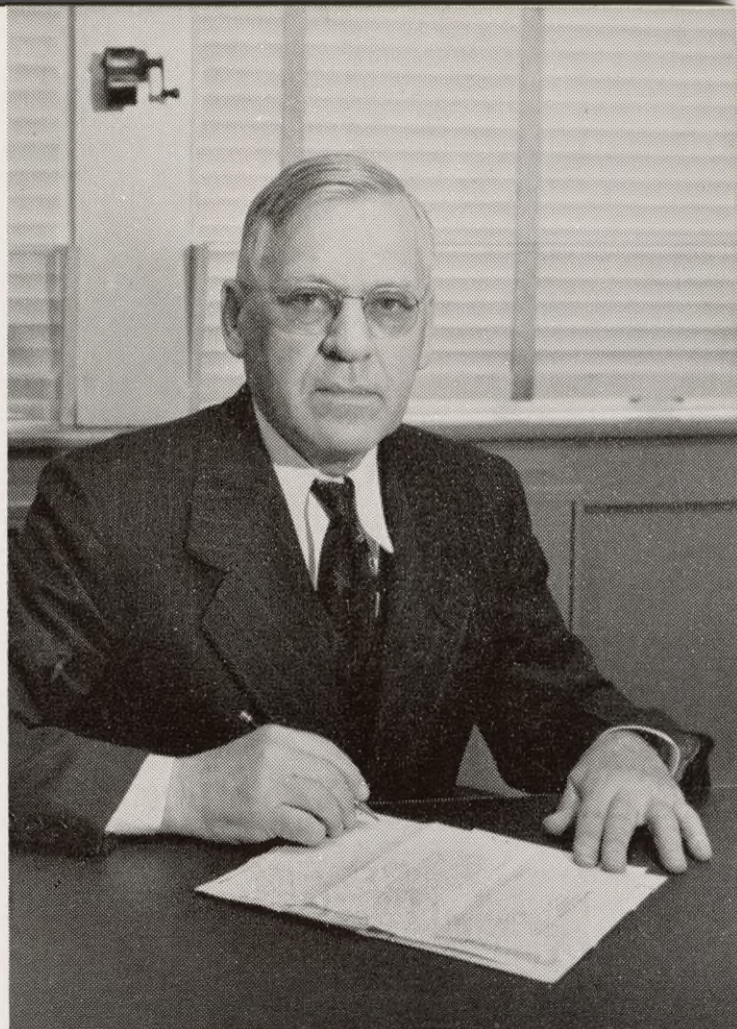
C. C. LAY
*Controller and
Assistant Secretary*



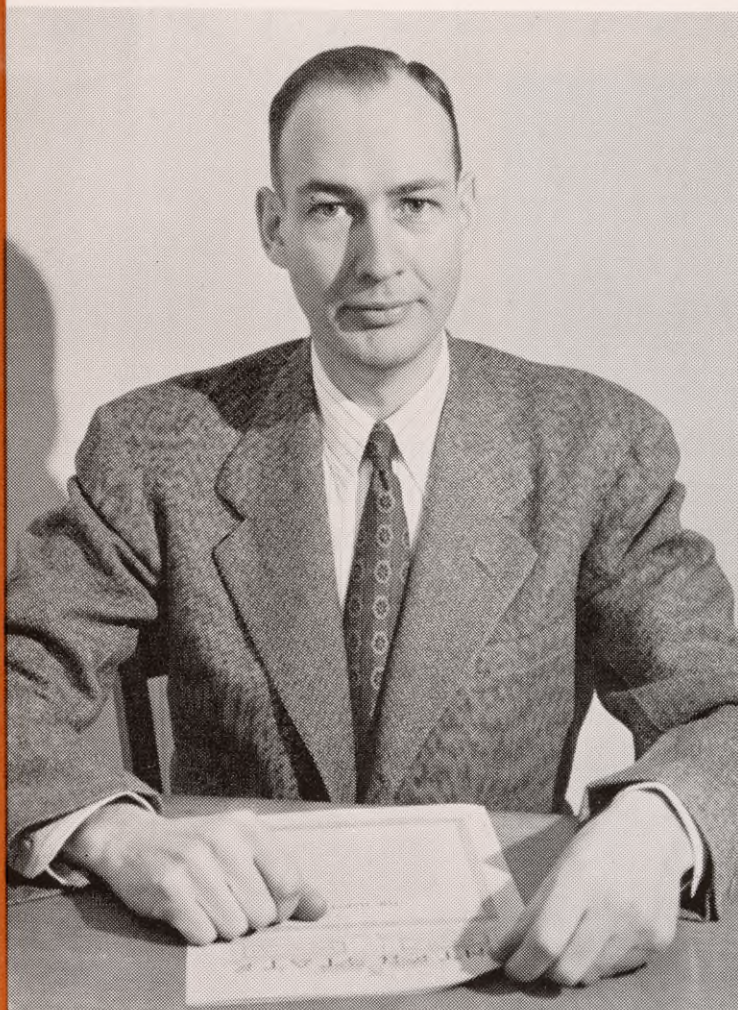
EARLE W. PUGHE
*Manager,
Manufacturing Division*



F. H. STEPHENS
*Assistant to
the President*



H. F. GRISCOM
*Manager,
Foundry Division*



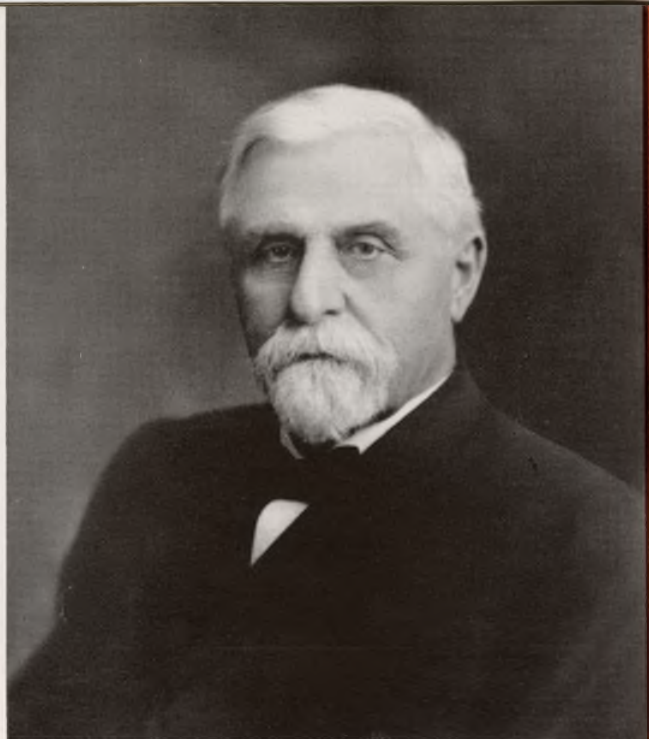
K. L. LANDGREBE, JR.
*General Superintendent,
Foundry Division*



S. W. JOHNSON
Personnel Director

GEORGE W. WHELAND

Founder and
First President



Three Leaders Who Gave Us TODAY'S OPPORTUNITIES

These three leaders guided Wheland through five panics and depressions and three wars. Their vision and ability built a great business which offers real opportunity for all of us. Mr. Z. W. Wheland and Mr. E. F. Wheland are still active in the business, contributing the experience and intimate knowledge gained in a lifetime of daily devotion to The Wheland Company. Their wise counsel will help us choose the right path for Wheland's continued growth and service to customers.

E. F. WHELAND

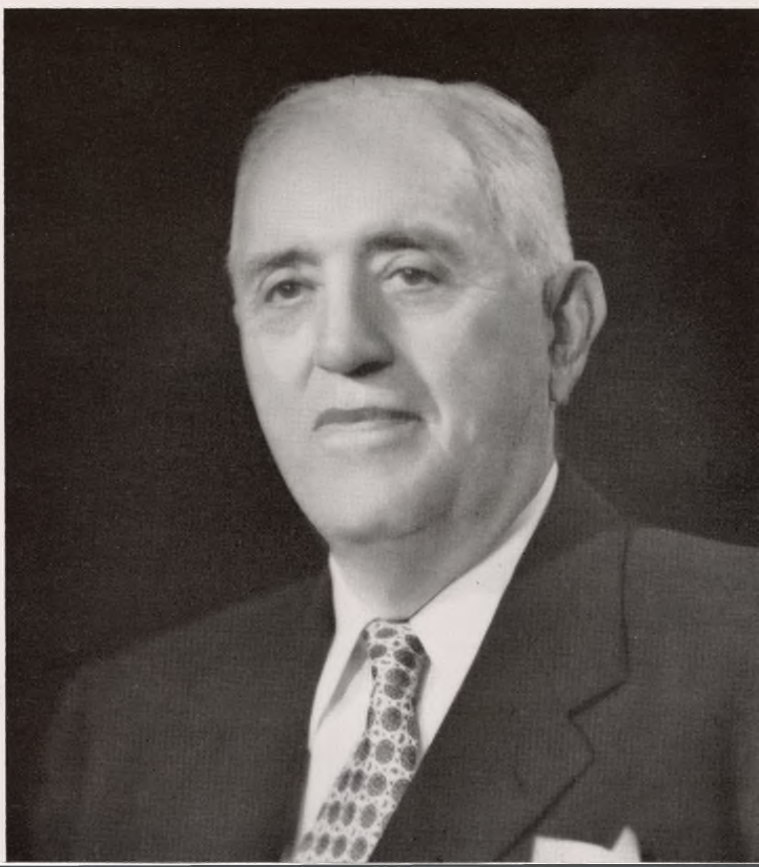
President from
1929 to 1945

Now Chairman
of the Board



Z. W. WHELAND

Secretary and
Director





The Wheland Company plant in 1875. It was located on the present plant site.



How The Wheland Company Started and How It Grew

The Wheland Company was started in 1866 at Athens, Tennessee by George W. Wheland. Mr. Wheland first made hollow ware castings and repaired farm machinery.

This business grew and Mr. Wheland looked around for a larger market. He decided on Chattanooga. In 1873 he bought two of the acres where the plant is today and moved to Chattanooga. He built a big frame building. In it he put a machine shop, foundry, blacksmith shop, and pattern shop. He repaired farm equipment and made grist mills, cane mills and water wheels.

In 1880, Wheland built small steam engines. They were so well made that many of those steam engines are still running today. There was a great need for lumber and there were plenty of trees in the Southeast. So Wheland started making sawmills. Wheland made good sawmills and has continued to improve them. Today Wheland is one of the oldest and largest manufacturers of sawmill machinery. Further improvement and modernization of Wheland sawmill machinery is a continuous program with our engineers.

By World War I, The Wheland Company had good equipment and an exceptionally capable staff. This organization quickly turned to war work. 95% of the plant work was making lathes for turning shells and making anchor windlasses for ships.

When that war was over, Wheland had lost its regular business because its peacetime customers had gone to other companies while Wheland was concentrating on war work. But

At Left: This was The Wheland Staff just before the turn of the century. The third man in the front row, holding the dog, is Mr. J. H. Street, father of Gordon P. Street, now President of the Company. Mr. J. H. Street started with Wheland as an apprentice in 1883 and learned his trade as a machinist here. It is interesting to note that the building shown in the photograph is still in use. It is now the side of machine shop between main office and stock room.

by working together, the people at Wheland designed, and returned to making, better sawmills. Wheland developed many new ideas for sawmills. Wheland pioneered the use of tapered roller bearings in sawmill equipment. By offering a better product and a better value, Wheland regained its customers.

In 1926, Wheland started making oil well drilling equipment. High pressure slush pumps were the first oil field machinery made by Wheland. Blocks, rotaries, swivels and drawworks were added later.

Mr. George W. Wheland was active in the business until his death in 1929 at the age of 86.

1929 also marked the beginning of a long and bitter business depression. But depressions and adverse business conditions were not new to Wheland. Since 1866 Wheland has survived three wars and the major panics and depressions of 1873, 1893, 1907, 1920, and 1932.

So Wheland people worked together and found a way to continue operations in a period when many companies fell by the wayside. Improved products, better and more efficient production and increased values for Wheland customers was the answer.

When World War II came, Wheland again went whole heartedly into war work. Guns, shells and anchor windlasses were produced with speed and quality which earned commendation. The Wheland record in all wars has been a distinguished record. Wheland has the equipment and the skilled people that the nation needs desperately in a war.

At the end of World War II, Wheland again had largely lost its customers because it had gone almost 100% into war production. Buildings built especially for war work were filled with special equipment for making guns.

Once again Wheland people faced a hard problem and solved it. A modern production foundry was set up in the gun plant. When this foundry was completed it was generally accepted as the most efficient and modern foundry that had been built up to that time. The grey iron castings made in this foundry had to be sold to customers several hundred miles away. A great disadvantage of costly freight and longer delivery time had to be overcome because there were many large production foundries near those customers who wanted this business. Many business men said that it would be impossible for Wheland to compete at so great a distance.

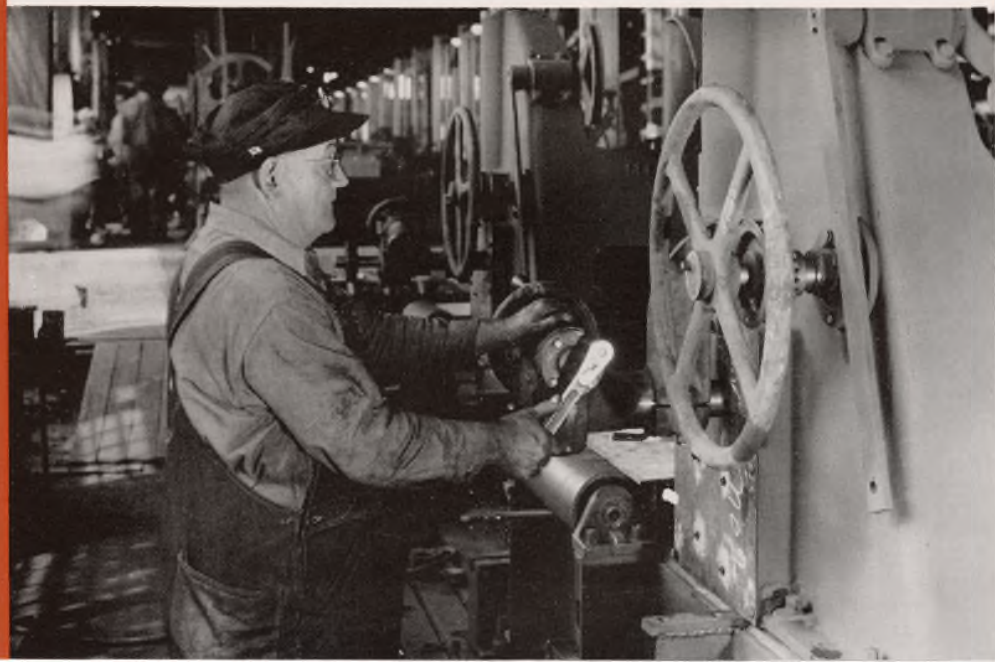
It was not easy to raise the money for so large and so uncertain a venture. But by working together and doing a better job, Wheland people have been able to compete and Wheland has been able to hold its distant customers.

The end of World War II also found Wheland oil field drilling equipment badly out of date. Our engineers had spent their time on war work. To get customers, Wheland started a big program of improvement of its drilling equipment. This has involved great expense.

Wheland's sawmill machinery has been improved and a continued program of improvement is being carried on. The customer is the boss. When we offer him better products, better service and better value we can expect him to buy from us.

From this brief history you can see that, several times since 1866, our organization has faced and overcome serious difficulties. Each time the people at Wheland have worked together and built better products. Over the years, the Wheland Organization has grown, become stronger, provided more and better jobs. What we have done in the past, we can do in the future.

W. B. (Berry) Dickert



What Wheland Makes

CASTINGS

There are two foundries at Wheland.

The production foundry makes grey iron castings in large quantity for other manufacturers. In less than four years the production foundry has delivered more than 18,000,000 castings of one design, along with vast quantities of castings of other designs. The production foundry is a large scale operation. Its existence depends on big production and on reliable quality and deliveries. These Wheland castings are sold in keen competition with other foundries.

The jobbing foundry makes many different types of castings. Some are grey iron, some are alloy iron (semi-steel), and some are aluminum. These castings are made for Wheland's use in Wheland machines. They are also made for other manufacturers. Many different patterns are cast. Though usually there are only a few castings made of a pattern, this jobbing foundry is a large and important part of the Wheland Organization.

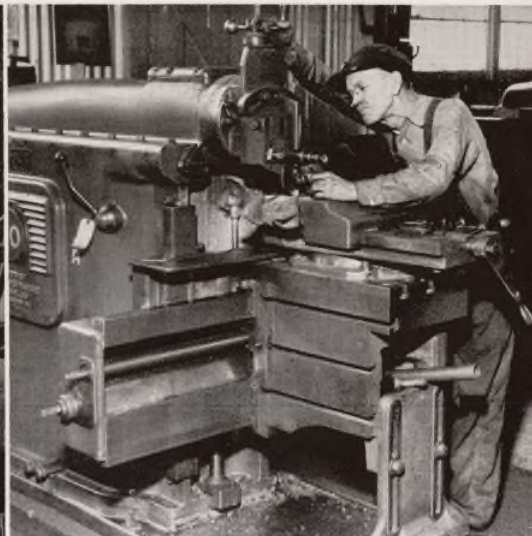
SAWMILLS

Circular sawmills, band sawmills, carriages, log deck machinery, edgers, trimmers, slashers and transmission and conveying equipment are made by Wheland.

Elgia Baker and Claude Pringle



L. C. Elmore



Wheland is one of the oldest and largest firms in the sawmill business. Wheland sawmill equipment has an unusually good reputation for efficiency, accuracy, dependability, long life.

The demand today is for more and more automatic equipment for sawmills. Wheland has been a leader in the use of compressed air and electrical controls to make its equipment faster and easier to handle. A further program of improvement will be carried on.

OIL WELL DRILLING EQUIPMENT

Wheland makes drawworks, pumps, rotaries, swivels, traveling blocks and crown blocks used in drilling oil wells.

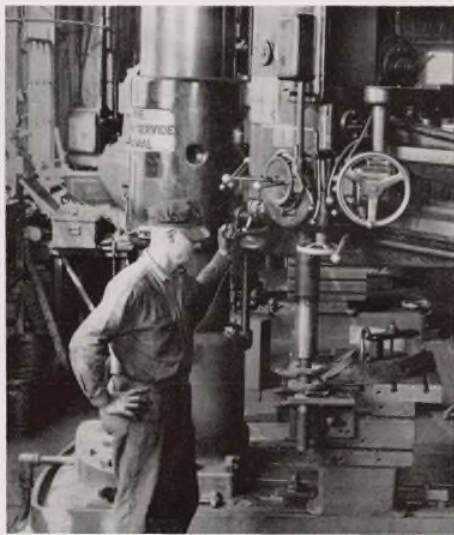
At the end of World War II, this Wheland equipment was out of date, because we had devoted our time to War work for five years. For the past three years, Wheland has made good progress on redesign and improvement.

Oil field equipment is probably subject to harder use than any other machinery. It must be so well built that it will stand up under the hardest service. Our progress on oil field equipment depends on how well we design and how well we build this Wheland equipment. Already our new designs are earning respect and approval in the oil fields. New machines are being constantly added to our machine shop to help build better equipment and build it at lower cost. Competition on design, quality of construction and on cost is keen. This is a real challenge to Wheland's ingenuity and ability.

William M. Stoner



W. F. Buttram



What You Can Expect From Wheland

There are certain things which we who work together can expect from Wheland.

First, we can expect good management that will attract customers and thus provide:

- a) Regular work
- b) Opportunities to advance
- c) Fair wages

Second, we can expect that Wheland people will be advanced instead of the company going outside to hire men for the better jobs. This policy is carefully followed. When the production foundry was started in 1946, it was a business new to Wheland. So it was necessary to go outside for experienced men. But, within three years, 24 out of the 35 department heads in this division had come up through the Wheland Organization. Every one of these 24 men earned advancement by superior work and ability.

In the manufacturing divisions, almost all the executives came up through the organization. Whenever possible, the better jobs are filled by promotions.

Third, we can expect training on the job. In addition to learning his present job, each man is given an opportunity to learn the job above him. As we improve our products and service we attract more customers. More customers mean more business. And more business means advancement for men who are capable of handling a better job.

Fourth, we can expect help on outside training. Your supervisor and the people in the Personnel Department are ready to help you decide what outside training will help you most in your self-improvement program. Outside training courses which are specifically approved for you will be paid for by The Wheland Company, on successful completion. When approved in advance, training courses which *might* make you more valuable in your job are paid for one-half by The Wheland Company on successful completion.

Fifth, you can expect that you will be kept informed as to what is going on in the business.

And last, but by no means least, you can expect personal consideration and help on your job and on your personal problems. Many Wheland helps are outlined later in this book.

What Wheland Expects From You

Your associates at Wheland expect you to work regularly. If you don't work regularly, you don't work at Wheland. Your associates expect you to be a pleasant working companion. If your heart is right and you have a good attitude, you will get along with the people you work with. We are all happier and we all do better work when we have cheerful and considerate working companions.

If your heart is right, you'll try to keep from making the same mistake more than once.

Every person at Wheland is expected to make an honest effort to improve himself.

When advancement and increased responsibility are offered, you are expected to accept it. Our mutual progress depends on everyone contributing his maximum ability. Any person unwilling to contribute to the extent of his ability shows that he is not working for the good of the entire organization and is not considered a desirable Wheland associate.

Each of us is expected to give a day's work for a day's pay.

Mr. O. W. Russ, Assistant Sales Manager, came to Wheland as office boy about half a century ago. With the single exception of Mr. E. F. Wheland, Mr. Russ holds the record for continuous service with The Wheland Company. Mr. Russ is the recognized Mayor of Possum Creek, an ardent fisherman and prominent in the Chickamauga Fly and Bait Casting Club. His splendid work and outstanding personality have earned the respect and affection of all of his associates, are a shining example for other members of The Wheland Organization.



The Wheland Company is locally owned, locally operated. The pictures on the following pages show that Wheland executives and supervisors have come largely from men who have grown with the business. *The Company does not go outside to hire men for the better jobs except when processes or products require specialized skills not then available within the Company.*

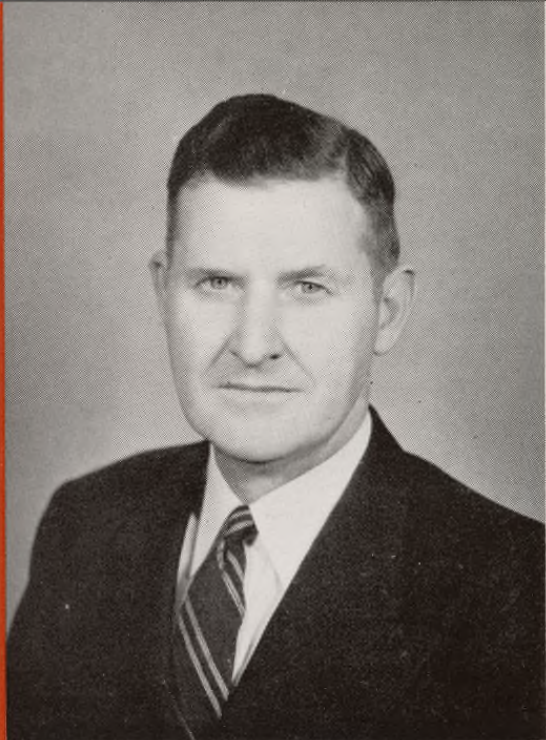
.....



J. E. BLACK
*Started as Personnel Clerk
Now Sales Mgr.—Rotary Drill. Equip.*



GEORGE E. CAMPBELL
*Started as Apprentice Machinist
Now Development Engineer*



ROBERT CHRISTIE

*Started as Welder
Now Foreman—Welding and Fabrication*



JOHN A. DEAKINS

*Started as Apprentice Machinist
Now Foreman—Molding Loop*



RALPH DURHAM

*Started as Foundry Trainee
Now Foreman—Molding Loop*



THOMAS HARGRAVES

*Started as Clerk
Now Foreman—Stock Room*



J. T. HESTER, JR.
Started as Clerk
Now Purchasing Agent



C. O. MARTIN
Started as Machinist
Now Foreman—Assembly



EARL HUFF
Started as Maintenance Mechanic
Now Foreman—Maintenance—Mfg. Div.

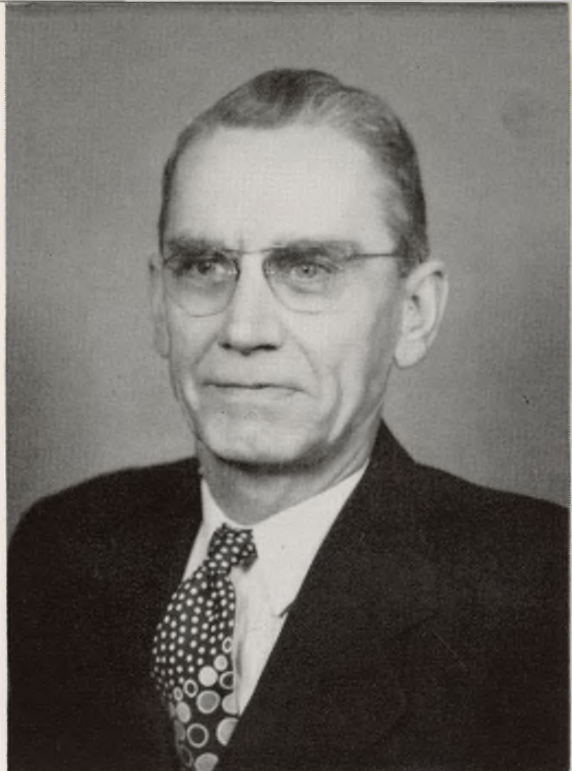


JOHN HOLCOMB
Started as Machinist
Now Foreman—Inspection



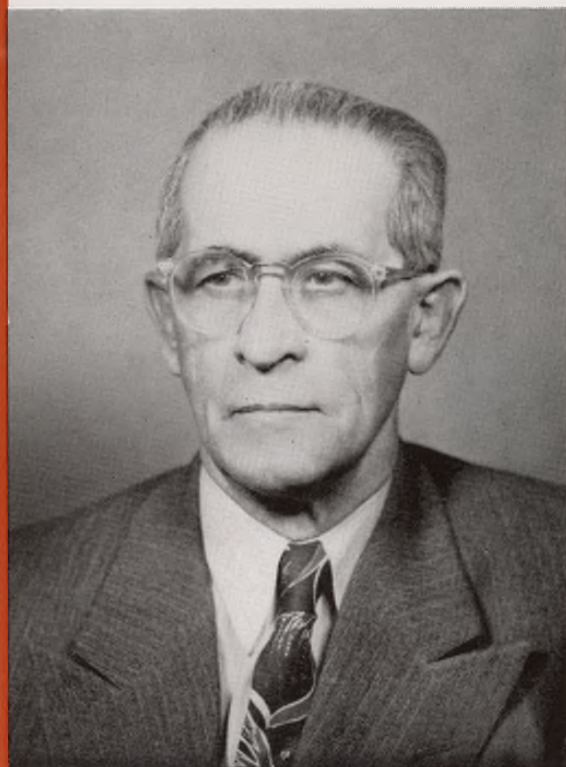
EDWARD A. LYLE

*Started as Draftsman
Now Engineer—Rotary Drilling Eqpt.*



H. U. HUFF

*Started as Foundry Rigger
Now General Foreman—Jobbing Fdry.*



A. E. MALICOAT

*Started as Stock Clerk
Now Foreman—Shipping—Foundry Div.*



LELON HILL

*Started as Inspector
Now Foreman—Shipping Dept.*



JACK D. RAPER

*Started as Clerk
Now Assistant Personnel Director*



AUSTIN RAMSEY

*Started as Draftsman
Now Engineer—Sawmill Equipment*



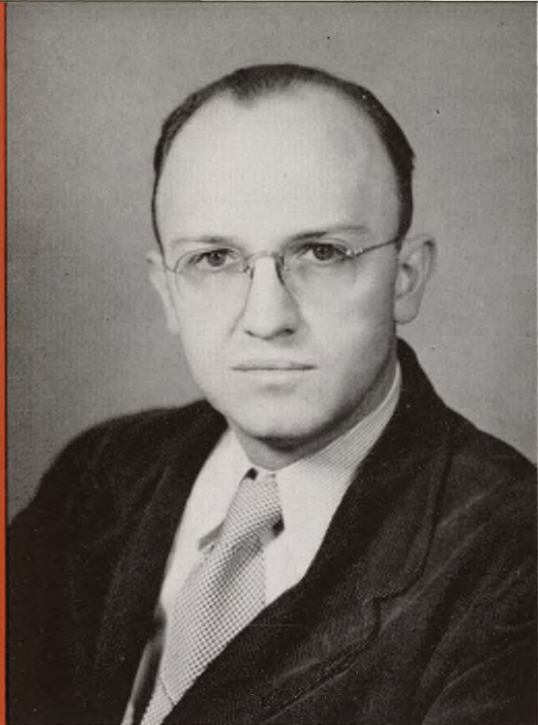
FRANCIS E. WHITE

*Started as Foundry Clerk
Now Foreman—Jobbing Foundry*



RALPH E. SHAFER

*Started as Stenographer
Now Sales Manager*



ROY SMITH
*Started as Drill Press Operator
Now Tool Engineer*



JAMES E. SKIDMORE
*Started as Machinist
Now Foreman—Machine Shop*



T. W. WESTBROOK
*Started as Machinist
Now Supt.—Manufacturing Division*



J. B. CARLTON
*Started as Time Keeper
Now Foreman—Molding Loop*



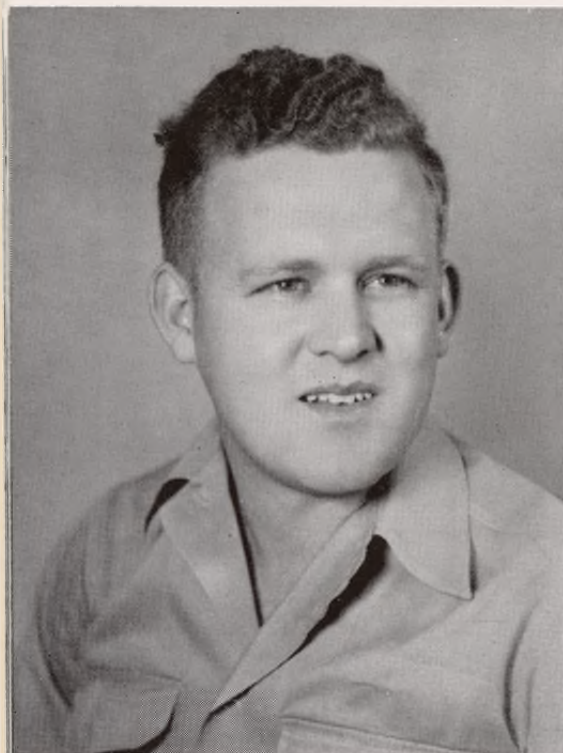
HARRY HEISKELL

*Started as Inspector
Now Foreman—Cleaning Room*



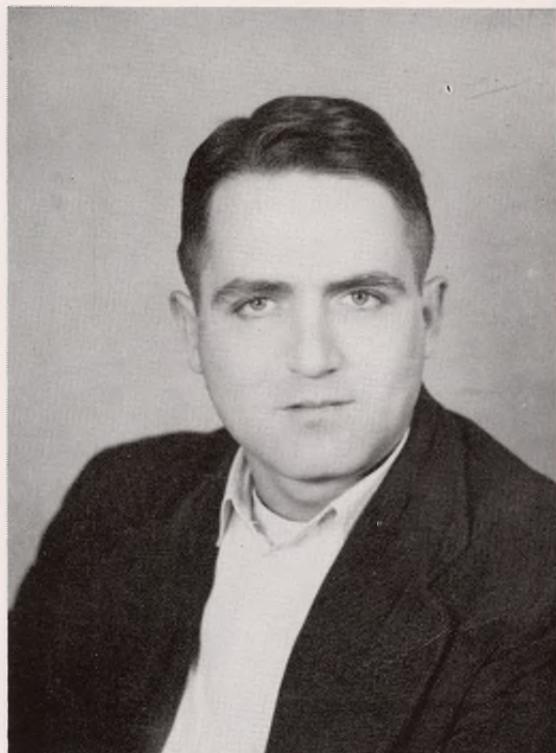
VERLIN INMAN

*Started as Helper
Now Foreman—Molding Loop*



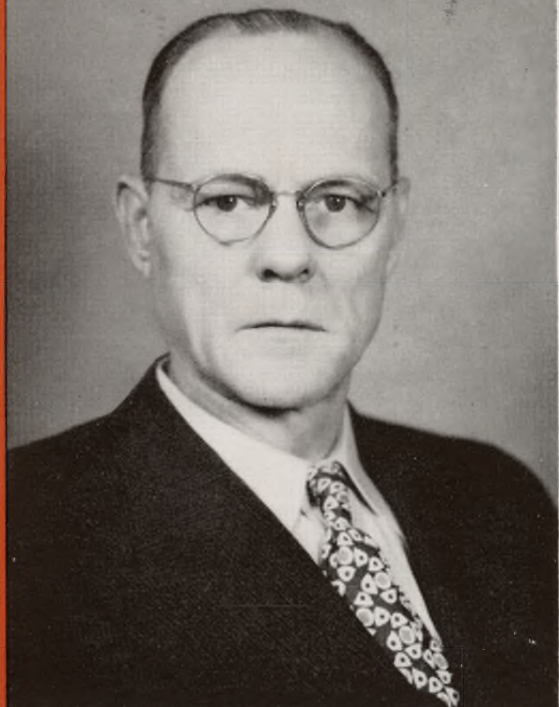
CARL PARMLEY

*Started as Sand Handler
Now Foreman—Sand Dept.*



MCCRACKEN (MAC) POSTON

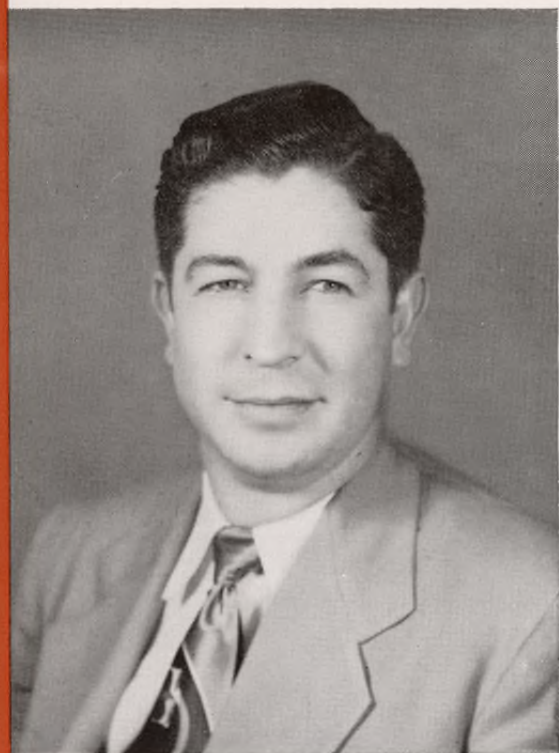
*Started as Sand Trainee
Now Molding Foreman*



E. L. STEVENSON
Started as Machinist
Now Foreman—Machine Shop



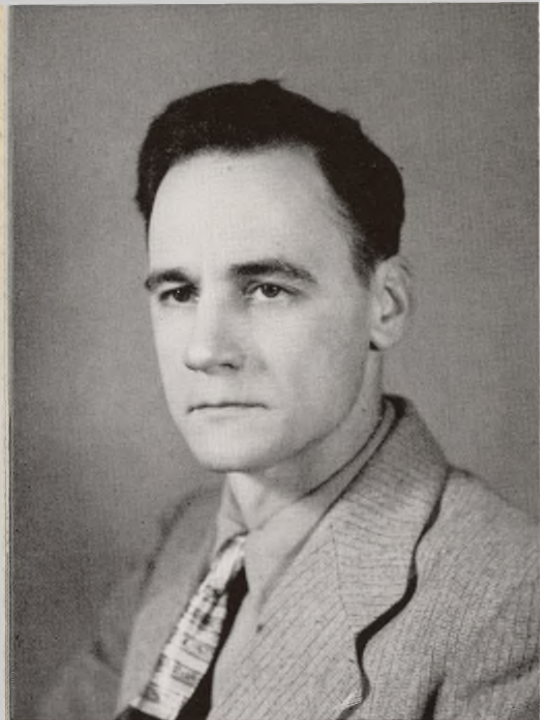
MONJAY GILLEY
Started as Crane Operator
Now Foreman—Molding Loop



WILL T. TANNER
Started as Foundry Trainee
Now Foreman—Molding Loop



LAWRENCE STEWART
Started as Foundry Trainee
Now Foreman—Molding Loop



FORREST D. VARNELL
*Started as Laboratory Technician
Now Foreman—Cupola*



ELMER KILGORE
*Started as Helper—Molding Machine
Now Foreman—Sand Dept.*



MRS. MARIE KINTON
*Started as Clerk-Stenographer
Now Secretary to President*



GRACE SIVLEY
*Started as Clerk-Stenographer
Now Secretary to Sales Manager*



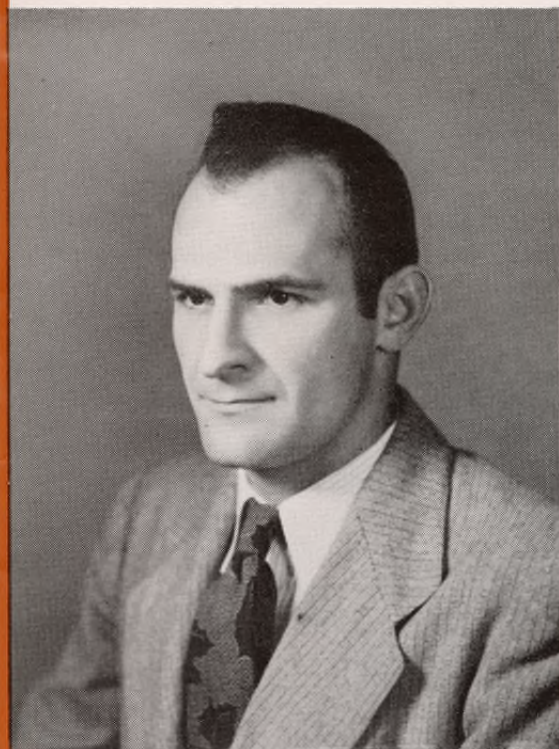
CECIL CLARK

*Started as Inspector—Cleaning Room
Now Foreman—Cleaning Room*



WILLIAM CHANDLER

*Started as Sand Handler
Now Foreman—Sand Dept.*



FRED W. PARSON

*Started as Clamp—Molding Machine
Now Foreman—Clean-up*



GORDON SMITH

*Started as Assembly Trainee
Supervisor, Prod. Plan. and Matl. Contl.*

Other Things We Share At Wheland

NEW PEOPLE • When new people are employed at Wheland, preference is given to people you recommend. If your heart is right, if you try hard and work regularly, your recommendation carries more weight than anything else. For the past three years, almost 100% of the new people were employed on recommendation of one or more Wheland people.

MEDICAL SERVICES • Wheland has a modern hospital with a Registered Nurse on duty each shift. This is your hospital. It is not just to look after injuries on the job. Go to the hospital for advice when you are sick.

The services of the Registered Nurses are available to you. Nurses do not, of course, practice medicine. If treatment or examination by a physician is indicated, you will be referred to your personal physician. In the event that the services of a doctor are needed in connection with injury at work, you will be advised to see your choice of the Company doctors. There are many doctors to choose from, including top specialists in almost every field.

LIFE, MEDICAL AND SURGICAL INSURANCE FOR YOU AND YOUR FAMILY • A separate book, "Employees' Benefit Plan", will be given you by Personnel Department. It tells about plans available to you at very low cost. The cost is low for two reasons. First, Wheland employees are a highly select group and thus get a lower rate.





Second, The Wheland Company pays a large part of the cost of this protection for you and your family.

The plan includes these forms of insurance:

Life Insurance

Accident and Health Insurance

Hospital and Surgical Expense Insurance for you
and your family

Disability Benefits

PAY • Your pay depends on the job you do and how well you do it. Your skill, your mental ability, your ability to get along with your fellow workers, your effort, your responsibility and your ability as a leader are all carefully considered. The worth of each job is carefully appraised and every effort is made to be fair to each individual.

OUT OF YOUR PAY CHECK • Certain deductions must be made from your pay check as required by law. These are:

1) Federal Old Age and Survivors Insurance. This is usually called Social Security. This Federal Act provides benefits for the worker when he reaches age 65 and for his dependents if he dies. By law, you and The Wheland Company are taxed equally for these benefits and your tax must be deducted from your pay. As of January, 1951, you pay 1½% of your earnings up to \$3600 each year.

These Social Security taxes should not be confused with taxes for Unemployment Compensation Insurance. The Unemployment tax is paid wholly by The Wheland Company.

Full details on Social Security can be obtained from Personnel or from U. S. Government Federal Security Agency,

Social Security Administration, Old Age and Survivors Insurance. Their local office is at 100 E. Sixth St., Chattanooga.

2) Federal Income Tax. The Wheland Company is required by law to withhold from your pay an amount which is determined by the amount of your pay and the number of dependents you claim. The money withheld from your pay is forwarded to the United States Collector of Internal Revenue. The amount withheld is approximately the amount of the Federal Income Tax due on the amount of your pay from this Company. At the end of each year you are given a record of your earnings and deductions. This is to assist you in preparing your Federal Income Tax return.

The law requires that the above deductions must be made from your pay. In addition, you may desire and authorize The Wheland Company in writing to make other deductions. The latter deductions may be for such things as the purchase of U. S. Savings Bonds, contributions to the Community Chest, or Red Cross, or for such other items as Expanded Insurance previously described. These latter deductions are strictly up to your desires and wishes.

PAID VACATIONS • After one year of service, provided 1600 or more straight time hours have been worked, everyone at Wheland who is paid by the hour is entitled to one week's vacation with pay. After five years of continuous service under the above conditions, each is entitled to an annual two weeks' vacation with pay.

HOLIDAYS • So far as is possible, Wheland is closed on New Year's Day, Memorial Day, Independence Day, Labor Day, Thanksgiving and Christmas. If you do not know whether or not you will be requested to work on a holiday, ask your supervisor.

HOURS OF WORK • The normal work week is 40 hours, made up of five eight-hour days. Time and a half is paid for overtime and double time is paid for work on the seventh consecutive day.

PENSION AND RETIREMENT PLAN • Long, continuous service with Wheland makes you eligible for monthly pension benefits for life at the time of retirement. At least twenty-five years of continuous service are required. Retirement age is 65.

In general, the amount of monthly pension benefits is based on the number of years of continuous service with Wheland and your average pay. Details of the plan can be secured from Personnel.

WORKING CONDITIONS • Providing and keeping good

working conditions is strongly emphasized at Wheland. Full attention is given to good lighting, heating, ventilation, general sanitation. In new building plans, special attention is being given to better locker rooms and other conveniences.

SAFETY • Wheland is an unusually safe place to work. The importance of safety has always been uppermost in our minds. Large sums of money are spent to provide safe working conditions. A great deal of time, thought and effort is given to safety education to insure that safe working conditions and procedures are followed. Safety is also the responsibility of each person. Your attention to safe practices and your personal attention to safety are a very necessary part of the Wheland safety program.

STABILITY OF EMPLOYMENT • Look at the record. People at Wheland have had more regular employment than in almost any other plant in the area. One of our first considerations is to maintain steady employment at fair wages. Good products, fairly priced to attract and hold customers is our best way to assure continuous employment.

INFORMATION FOR YOU • Every member of the Wheland Organization is directly concerned with what happens in the business. We can work together to our best mutual advantage when all of us know what is going on.

LEARNING YOUR JOB • An experienced person is assigned to teach the best and safest known way to do your work. You are also given every opportunity to learn the next job above you so that every man can advance as fast as there are openings. Your supervisor or the Personnel Department will also help guide you on outside training courses which, if approved in advance, will be paid for by the Company in whole or in part as agreed **ON SUCCESSFUL COMPLETION**. Your progress depends on you. You have every facility made available for your progress.

SUPERVISION AND YOU • In almost every instance you will find that your Supervisor knows your job well because he has done your job. Wheland Supervisors, wherever possible, are men who have shown extra ability and thus have risen through the ranks. Therefore your supervisor *knows* what your job requires. He knows your problems because he has had exactly those same problems. A Wheland Supervisor is responsible for all work done under his supervision. He is also responsible for fair treatment of each person in his department. He can help you with most of your problems. Ask him and he will try to help you with either your job, your business or your personal problems.

What Are Our Prospects?

You naturally have a very real interest in the future of The Wheland Company. No one can see into the future. If we use the past as a guide to the future, the future is bright.

Wheland equipment is good. It is being steadily improved. Wheland products are good and they are being steadily improved. Wheland has been able to compete in distant markets and overcome the handicap of higher freight rates to deliver our products to our customers. As we continue to offer good products, good values and good and dependable service, we should get more and more business from our present customers and attract new customers. There is every reason to expect Wheland to continue to grow and provide more and steadier jobs.

Wheland has always contributed toward the defense of our Country. When war materials are needed, Wheland is well suited to produce many critical items. Wheland has the men and much of the equipment required.

Details of Preparedness Plans are not published. In event of war or all-out preparedness, there is no question but that we at Wheland, as in the past, will render a major contribution. We do not know of any organization where you could be of more vital service to our Nation.

In addition to Preparedness Plans, there are plans for expansion in peace time activities. The possibilities of new or improved products are being constantly studied. In the past year, studies have been made on several new products. Plans, complete with buildings and equipment, have been drawn up. Cost studies on new products have been made.

This planning for the future will continue. As new fields of operation are found which promise advantages for the organization, Wheland expects to expand. Wheland is a live and growing organization. It seeks new opportunities for expansion in work that offers the customer attractive goods at attractive prices and permits Wheland people to grow in service and in pay.

Typical Members of The Wheland Organization who now receive regular payments under Wheland's Retirement Plan. It is men like these who have cooperated to make this Company what it is today



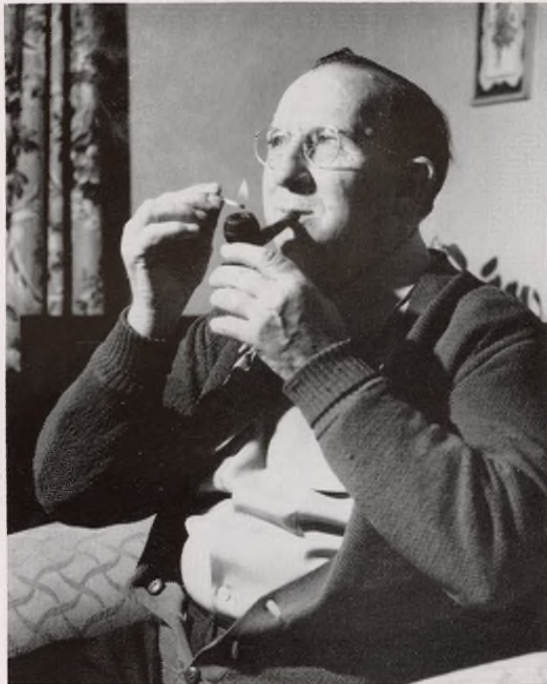
Guy V. Dewey, with Wheland since 1920. The twinkle in his eye and rake in his hand show his happiness in working with those he loves. His beautifully kept place shows his industry and ability.



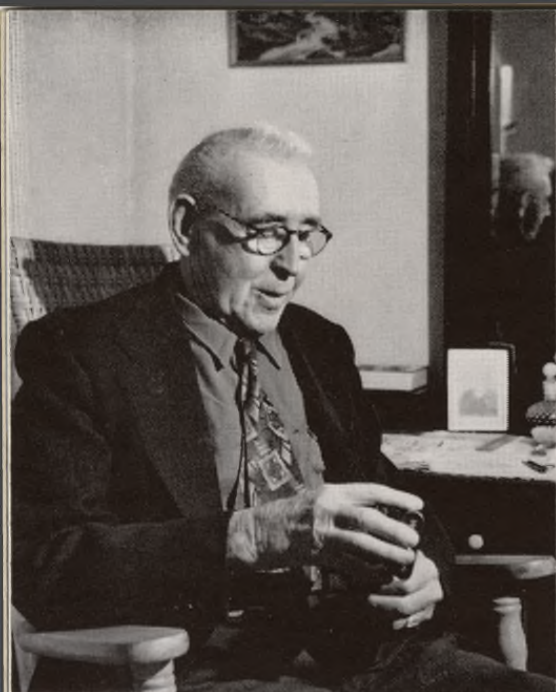
J. P. Williams, with Wheland since 1913. With grandchildren around the house and a regular income from Wheland, he leads a happy and busy life in his beautiful Rossville home.



William M. (Sparky) Cravens, with Wheland since 1918. On his four acre tract he is a successful gardener and chicken raiser. One of his sons is also a valued member of The Wheland Organization.



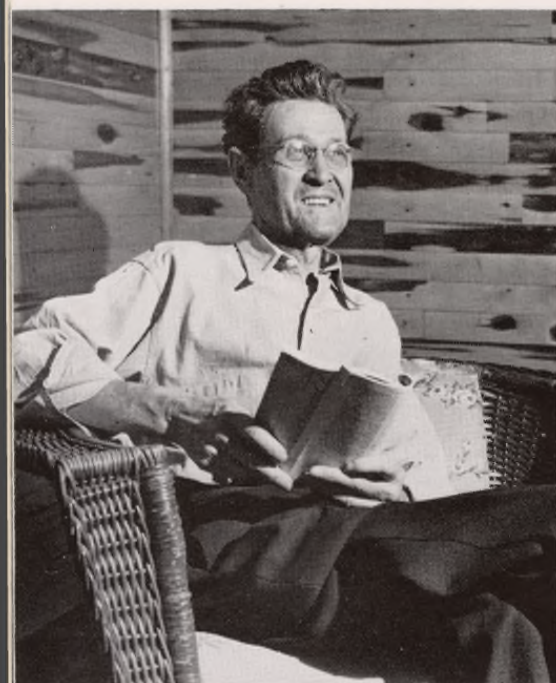
T. A. (Andy) Franklin, with Wheland since 1920. The Dean of South St. Elmo who daily supervises all businesses in his area and raises fancy chickens on the side. A young lady of four assists him.



L. E. Hollingshead, with Wbeland since 1910. A young man who is thinking of going West to his property in Texas. We don't know whether he is going to raise cattle, drill for oil or service sawmills.



William J. (Billy) Sneed, with Wbeland since 1907. A legendary character fondly remembered in the reminiscences of the old timers in the plant. A television fan who weilds a wicked paint brush.



Stephen M. Barnes, with Wbeland since 1923. A great reader, champion raiser of strawberries and with a green thumb for all gardening, Note the cedar walls Mr. Barnes installed in his entire house.



Harry Moore, with Wbeland since 1917. One of the best gardeners in the area and very active in the work of the church next door to his home. He is shown here at the entrance to his church.

*"We stamp our own value upon ourselves
and cannot expect to pass for more."*



Wheland products are used all over the world

THE WHELAND COMPANY
Chattanooga, Tennessee, U.S.A.

2007.146.035.6