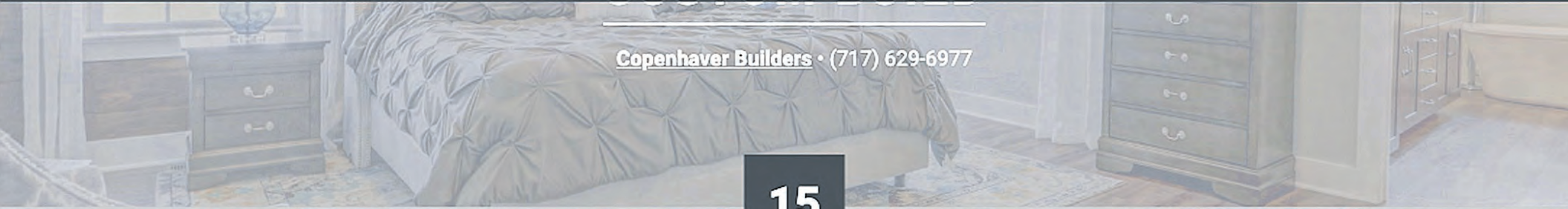


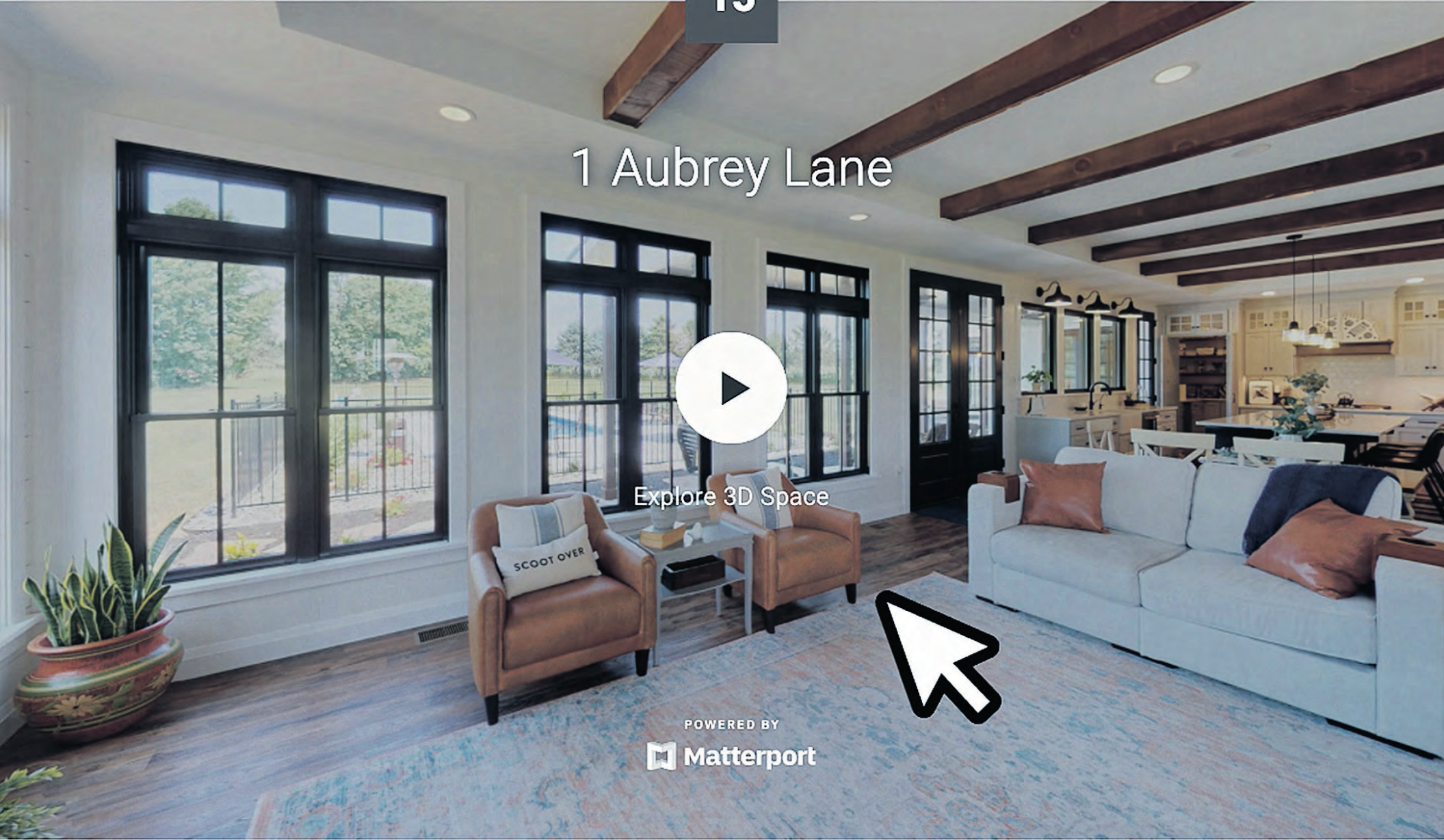
Parade of Homes



SPECIAL SECTION




15



VIRTUAL VISITS


Here's what to watch for as the 2020 Parade of Homes tour moves online due to COVID-19:



WHAT'S NEW

- From 3D virtual tours to a single-room remodel to the first-ever people's choice award, this year's Parade is shaping up to be like no other.


Page 3



RIGHT ON TREND

- With rustic beams, custom wainscoting and more, Landmark Homes' Brentwood in Home Towne Square showcases the latest trends.


Page 4



FULL OF SURPRISES

- Alden Homes' entry at Alden Place features a floating loft, a cantilever staircase and a see-through fireplace with unique quartz surround.

Page 5



A NEW PLAN

- Just in time for the Parade, EGStoltzfus Homes debuts the flexible and functional Glen Mary floor plan in its popular Landis Farm neighborhood.

Page 6



58 Beech Tree Court, Annville
Garman Builders
\$251,990



709 Kincaid Ave., Lancaster
Keystone Custom Homes
\$449,000



649 Fieldstone Drive, Annville
Pine Hill BuildingCo.
\$394,000



1840 Emerald Way, Mount Joy
Ironstone Homes
\$394,900



161 East Valley Road, Denver
Landmark Homes
\$414,600



1548 Cambridge Drive, Lebanon
Garman Builders
\$427,990



240 Market Square South, Leola
Garman Builders
\$430,990



1405 Windemere Lane, Landisville
EGStoltzfus Homes
\$494,235



1204 Mosaic Drive, Lebanon
Alden Homes
\$529,500



345 Home Towne Blvd., Ephrata
Landmark Homes
\$625,000



104 Herondale Drive, Landisville
Keystone Custom Homes
\$649,000



119 Country Meadows Drive
Custom Home Group
\$699,900



1062 Valley Crossing Drive, Lititz
Garman Builders
\$803,990



253 Sheep Hill Road, Newmanstown
Fred Wiegand Builder
\$838,500



1 Aubrey Ave., Lebanon
Copenhaver Builders



515 S. Broad St., Lititz
Garman Builders



168 Christian Drive, Hummelstown
EGStoltzfus Homes



860 Clubhouse Road, York
Re-Bath

Parade of Homes 2020
begins Saturday, Oct. 24 at:
lanasterparadeofhomes.com

EXPLORE THESE HOMES IN THE COMFORT OF YOURS

MARGARET GATES
MGATES@LNPNEWS.COM

Like many other events in 2020, the Parade of Homes is going virtual thanks to COVID-19.

While fans of the annual showcase of new and re-modeled homes may miss walking through the entries in person, they can still tour room by room on their computer or smartphone screen.

That may be a disappointment to some, but Melanie Capanelli, director of programs and communications for the Building Industry Association of Lancaster County, sees at least one bright spot in the new format.

“If people didn’t have the opportunity to see all the homes in the past, this gives them the opportunity,” Capanelli says. “They can do it at 3 o’clock in the afternoon or 3 o’clock in the morning.”

The re-imagined Parade of Homes, postponed from this summer, kicks off Oct. 24 with the launch of a revamped website, lancaster-paradeofhomes.com, featuring 3D tours of each entry.

So while visitors in previous years were limited to several hours a day over a nine-day period to tour the homes, they can now explore each entry as many times as they want in the comfort of their own homes.

This year’s Parade of Homes will feature 18 homes (17 in Lancaster and Lebanon counties and one in York) reflecting the latest design trends, creative floor plans and decorating ideas. The largest entry, with an unpublished sale price, is a two-family, seven-bedroom home by Copenhaver Builders in Lebanon.

This year’s list of entries is significantly shorter than 2019, when 29 homes were on the tour. Although some of that is due to COVID-19, a robust real estate market is also to blame, Capanelli says. Some homes that would have appeared on the original June tour have now been sold, she says.

“I was happy with 18, to be honest,” she says. “Once I started getting the word out there about what we were doing there was a lot of enthusiasm about it.”

Two of this year’s entries are whole-house remodels by Garman Builders and EGStoltzfus Homes. Once an exclusively new-home event, the Parade welcomed its first remodeled home to the tour in 2018, its 28th year.

This year’s Parade has one more first up its sleeve: a single-room remodel, this one an updated bathroom by Re-Bath.

“We’re really hoping to get some more remodeling projects in. It seems like that’s the way the industry is going,” Capanelli says. “I think people are intrigued by those before and after. I think people get a lot of ideas from new home construction, too.”

The Parade of Homes is typically a rite of summer. When the BIA decided to postpone the late-June event due to COVID-19 there was still talk of doing an in-person version in the fall, Capanelli says. Safety concerns, in particular with the occupied remodeled homes, swayed organizers to go virtual, she says.

“It just made sense to keep up with the safety and the standards our state is in,” she says.

Using Matterport 3D technology, the BIA created the



KEYSTONE CUSTOM HOMES



CUSTOM HOME GROUP



CUSTOM HOME GROUP



GARMAN BUILDERS

14 TRENDS TO WATCH AT THE PARADE

Here are some unique features you’ll see this year:

- Master baths with freestanding soaker tubs and tile showers with floating shelves
- Spacious kitchens with slate appliances, wall cabinets, farm sinks, large islands, eye-catching backsplashes, on-trend black hardware and taller windows
- An array of fireplaces, including see-through, with a variety of unique surrounds
- Open floor plans that foster an abundance of natural light and spacious areas for entertaining
- Inviting porches and entryways and appealing patios and decks with stainless steel cable railing
- Lofts and bonus rooms
- Black-framed windows
- Walk-in pantries and sliding barn doors
- Smart home technology
- Convenience features from thoughtfully designed first-floor laundry areas and/or mudrooms with built-in lockers and benches
- Popular flooring trends, including hardwood and luxury vinyl plank
- Distinctive features such as rustic beams, cathedral ceilings with wood beams, tray and coffered ceilings, board and batten trim, custom wainscoting and shiplap
- Private owners suites with expansive closets and bathrooms
- One-story living open floor concepts

virtual tours of each entry.

“The public can explore the homes and the projects utilizing the 3D technology. They can click right on it and it’s like you’re in the home touring it. It’s really fascinating how accurate they are and how in person they are,” Capanelli says. “We didn’t want to just use pictures. The 3D technology is definitely the way to go. Realtors are using it, we felt like we should jump on board, too.”

The exterior portion of the 3D tour even allows viewers to see a bit of the surrounding neighborhood.

In addition to the individual 3D tours, the website also includes a list of design highlights for each home, along with the price and contact information for the builder or remodeler. The site will include a map, but organizers have omitted directions to each home to discourage too many visitors from driving by, Capanelli says.

As in previous years, entries will be classified in divisions based on price and type of home, such as single-family and townhome/duplex. Judges will award best-of-show honors in each division, along with addi-

tional awards in categories such as interior and exterior design and landscaping. The highest honor, the Fulton Award, will go to the best overall single-family home and townhome.

Judges following social distancing and other safety guidelines completed their judging of the Parade entries in mid-September. While the BIA typically announces winners at a gala event for those in the industry the evening before the tour’s opening day, that too will change this year. The BIA plans to announce the winners to the public via a Face-

book Live event at 3 p.m. Friday, Oct. 23. Those interested in watching should like the BIA’s Facebook page at business.facebook.com/BIAofLancasterCounty. They will be notified when the event begins.

One award, however, will have to wait. In yet another first, the public will get to vote for a people’s-choice winner. Cast your ballot at bit.ly/ParadePeoplesChoiceAward. Voting will end Nov. 20, Capanelli says. Unlike past Parade of Homes tours, the virtual version currently has no end date.

While COVID-19 has been

challenging for the Parade and the attention it brings to local builders, Capanelli says it gave the BIA the impetus to revamp the event’s online component, something that will hopefully reap benefits long after COVID-19 is gone.

“We certainly love the in-person Parade, but I think this is allowing us to be a little bit of a hybrid for the future,” she says. “We’ll be tying the two together.”

The BIA will still publish a guidebook this year. To request a copy, contact the BIA at 717-569-2674 or staff@lancasterbuilders.org.



ReMax Pinnacle
Dan Parson Team Partner
500 Delp Road
Lancaster, PA 17601



Kim Sutter Eckels
717-575-8289 or 717-569-2222
Realtor, Notary & Seniors Real Estate Specialist
kimsuttereckels@gmail.com
www.kimsuttereckels.remax.com



REALTOR
Andrew Bartlett

1280 Plaza Blvd,
Lancaster, PA 17601

D: 717-488-2585 | O: 717-553-2500
AndrewBartlett@kw.com
LancoRealEstate.com
AndrewBartlett.kw.com

download my app → <https://www.kw.com/download/KW2WD85U0>

Each Office is Independently Owned & Operated



Anne M. Lusk
717-291-9101
Lusk & Associates Sotheby's
International Realty
100 Foxshire Dr, Lancaster, PA 17601

Where
Excellence
Meets
Experience





345 Home Towne Blvd., Ephrata | 161 East Valley Road, Denver

Brentwood a showcase of trends

SPONSORED BY
LANDMARK HOMES

The Parade of Homes is a showcase for the hottest trends in home design, and many of today's popular features — including custom wainscoting, board and batten trim and rustic beams — are on display in the Brentwood, the newest model home in Home Towne Square.

The 55-plus community by Landmark Homes, just west of downtown Ephrata, is known for its charming village-style layout and colorful Arts and Crafts-style homes with welcoming front porches.

The Brentwood, at 345 Home Towne Blvd., continues that tradition.

The two-story home's Craftsman-style exterior features white board-and-batten siding with wood accents and striking black details, including black window frames and eave brackets. Those accents continue in the two-story foyer, which features soaring wainscoting and decorative wood detail on the ceiling.

That stylish, rustic charm continues throughout the home, from the two-tone cabinetry with metal center-ring cabinet pulls in the kitchen to the cathedral ceiling with decorative beams in the family room to the wagon wheel chandeliers in the dining room and owner's

suite. Home Towne Square may be a 55-plus community, but there are plenty of options for those who aren't quite ready to downsize and who don't want to spend all of their time on home maintenance.

With three bedrooms, a bright and open floor plan, and 3,148 square feet of living space, the Brentwood offers a host of amenities.

The kitchen includes stainless steel appliances, quartz countertops, tile backsplash, and an island with breakfast bar and farmhouse sink. It opens to a breakfast area and the sunny great room featuring a two-story gas fireplace with stone surround and box-beam mantel. A sliding glass door opens to a screened-in deck.

The first-floor owner's retreat offers a relaxing sitting area and access to the screened-in deck, along with a private bath that includes a double-bowl vanity, private water closet and zero-threshold tile shower. The spacious, oversized closet is a room all its own, with plenty of built-in shelves and drawers.

The first floor also includes a dining room with decorative beam detail on the ceiling, a study, a spacious laundry room with plenty of counter space and built-in

LANDMARK, page 5



The Brentwood family room features black window frames, a gas fireplace with stone surround and a cathedral ceiling with decorative beam details.



LANDMARK HOMES

Left: The Brentwood model home in Home Towne Square. Right: The home's open kitchen includes an island with breakfast bar.

Explore 1-story living at Hawk Valley Estates

SPONSORED BY
LANDMARK HOMES

Hawk Valley Estates in Denver is a community of single-family homes that embraces open space, but its Parade of Homes entry is proof that spacious homes can come in smaller packages.

At just over 2,000 square feet, the Northfield, at 161 East Valley Road, Denver, is the smallest of 18 available floor plans in the Landmark Homes community, but it lives large — from its

9-foot first-floor ceilings to its open floor plan to its cathedral ceiling that extends from the kitchen to the family room.

One of three one-story plans in Hawk Valley Estates, the Northfield has an open kitchen with slate appliances, quartz countertops with tile backsplash, and an island with breakfast bar, along with a dining area that offers sliding-door access to a patio. The family room features that cathedral ceiling with decorative wood

beams and a gas fireplace with stone surround and box beam mantel.

The Northfield has two bedrooms, including a private owner's suite with an expansive closet and a bathroom with a 5-foot shower and double-bowl vanity.

The home also has a study and a two-car garage with entry to a mudroom featuring built-in lockers. There is vinyl plank flooring in the main living areas.

At 2,004 square feet, the Northfield is priced at \$414,600.

Like all homes in Hawk Valley Estates, the Northfield sits on a lot of at least one-half acre situated among preserved natural space.

Hawk Valley Estates is currently in its first phase and will have 160 homes when complete.

Home prices start in the upper \$300s.

With its picturesque setting, Hawk Valley Estates may feel like a rural community, but it's actually just minutes from the Pennsylvania Turnpike and other



LANDMARK HOMES

The Northfield's open floor plan includes a family room with a cathedral ceiling and a gas fireplace with stone surround and box beam mantel.



The Northfield kitchen includes slate appliances, quartz countertops and a tile backsplash.

major routes, making it a convenient place to call home for those commuting to Lancaster, Reading, Harrisburg or Philadelphia.

Hawk Valley Estates is located in the Eastern Lan-

caster County School District.

The community is open for in-person and virtual visits. Regular open house hours are 11 a.m. to 5 p.m. Tuesday, Thursday and Friday, noon

to 5 p.m. Wednesday and 10 a.m. to 5 p.m. Saturday.

For more information, contact Community Sales Manager Kristin Larusso at 717-419-1611 or KristinL@OwnALandmark.com.

1.99%
APR
12-MONTH INTRODUCTORY
FIXED RATE

3.25%
APR
VARIABLE RATE THEREAFTER
CURRENT APR

A Great Idea You Can Build On. Apply Today!

JBT Lititz
717-568-8488

JBT Manheim
717-664-0190

JBT Ephrata
717-733-JBT1

JBT Robesonia
610-693-4584

NO FEE
Home Equity
Line of Credit*

jbt

Bank on a Smile.®

jbt.bank

Member
FDIC

Equal Housing
Lender

*Offer available at JBT's Lititz, Manheim, Ephrata, and Robesonia branches only. This product is a variable rate, open-end loan secured by your primary residence. 80% maximum loan to value. Cannot be used for home purchase. Property insurance is required. An appraisal and flood insurance may be required. Title insurance required on lines of \$250,000 or greater. Maximum credit line amount is \$250,000. Loan charges ranging from \$376 to \$2,811 may apply. At line closing we will waive the third-party charges for appraisal, credit report, flood certification, flood life of loan, title search, notary, tax certification, and recording. Annual Percentage Rates (APR's) listed are accurate as of 10/05/20. For more information about current rates, applicable charges, and available terms, or for non-owner occupied real estate loans, contact JBT's Client Resource Center at 717-274-5180 (Option 1) or visit our Online Loan Center for details. These promotional rates and terms, including waiving of charges, are only valid for Tier 1 credit score (720+) as determined by TransUnion FICO Classic (04) credit score obtained by JBT at time of loan application and requires \$30,000 in new money. Other rates available for loans that will satisfy existing JBT loans or credit scores <720. Example: Initial introductory Annual Percentage Rate (APR) of 1.99% is fixed for twelve months. After twelve month introductory period, APR is based on an index (Wall Street Journal Prime Rate) plus a margin of 0% (3.25% APR accurate as of 10/05/20). Your initial introductory APR and APR thereafter will be determined based on your credit qualifications. APR may vary. Maximum APR is 18.00%. Rates and terms may be changed or withdrawn at any time.

MARILYN BERGER
& ASSOCIATES

kwe

ELITE
KELLERWILLIAMS. REALTY

1201 Lititz Pike, Lancaster, PA 17601 • (717) 291-1228
www.lancasterberger.com

COME TALK TO US ABOUT OUR DIRT...

Build your incredible dream home or commercial business on one of our many lots available. Located in and around Lancaster County!

- 629 New Dorwart Street, Lancaster (2.4 acres)
- 325 Hunzinger Road, Wernersville (176+ acres)
- 28 Ridge Road, Lititz (Nearly 1 acre)
- Trinity Church Road & Long Level Road, Wrightsville (13+ acres & 8+)
- Manifold School Road, New Park (Nearly 1 acre)
- Running Pump Road, Lancaster (20+ acres)

Plus Many More. Call us TODAY!



Alden floor plan full of surprises

SPONSORED BY ALDEN HOMES

Alden Homes has a tradition of designing Parade of Homes entries that are full of surprises, big and small.

For those who have come to expect the unexpected from Alden, this year's entry at 1204 Mosaic Drive, Lebanon, part of the 55-plus Alden Place community, won't disappoint.

"We want it to be interesting and unexpected, whether it's color choices or little neat features you don't see in other places," says Sharon Hurst, interior decorator and stager for Alden Homes.

Or as architectural designer and new homes consultant Bill Martin puts it: "If you're going to go bold, do it and own it."

For this Parade home, they took the existing Alden floor plan and gave it a host of architectural firsts for Alden Homes, from an angled front door to an exterior stone accent that looks like worn, painted wood.

There are even some firsts that appear to defy gravity. Among them:

- A modern-style cantilever staircase featuring wood treads anchored to the wall using a hidden system.
- A floating loft that appears suspended over the main living area.
- A freestanding wall in the master bath that serves as a front for the walk-through tile shower and a backdrop for the dual vanity.

There are plenty of other design firsts in the Alden, too, like a live-edge barn door that pulls double duty as both wall art and a second entry to a walk-in pantry between the dining room and kitchen. That pantry includes a convenient coffee station with its own water source.

Once in the kitchen, there's more bold to behold, from the black frameless Signature Custom Cabinetry and charcoal gray subway tile to the contrasting matte white appliances.

In an open floor plan that joins kitchen and family

room, the eye naturally travels from the kitchen island's marbleized quartz countertop to the family room's dramatic see-through fireplace, framed with a floor-to-ceiling surround in the same quartz pattern.

The other side of that fireplace, with a stone surround matching the home's exterior, faces a spacious covered patio.

Off the family room, there's another bold and unexpected surprise: 8-foot coral-hued sliding barn doors that open to the master suite. That color repeats on a second set of barn doors leading to the master bath as well as the inside of the front door.

Once in the master bedroom, it may take a moment to notice there are no dressers, only a king-size bed. Never fear. That paneled wall across from the bed is actually five, floor-to-ceiling hidden closets customized to hold anything from clothing to handbags to shoes. Need more space? There's another spacious walk-in closet off the master bath.

"We try to make all the space count," Hurst says.

That's especially true of all the space beneath those floating cantilever stairs, where they found room for two comfy chairs and a built-in wine bar, complete with a 12-bottle wine fridge and a wine rack.

The stairs lead to that floating loft, which is surrounded by a cable railing. The flexible space can serve as a sitting area or even an office/study space.

The Alden also includes a second bedroom, a study/third bedroom, and a laundry room off the garage with sliding barn door entrance to the main living area.

The home is equipped with smart technology, including Lutron blinds and lights controlled by smartphone.

Martin notes that anyone who has seen an Alden model in the community before hasn't seen anything like the Parade home — proof that buyers can personalize any



The Alden Homes Parade entry at Alden Place features, clockwise from top: A see-through fireplace with quartz surround to match the kitchen countertops, a floating loft and a wine bar cleverly tucked beneath the open staircase.

floor plan within its existing footprint to create a home that's totally unique.

Those who need inspiration for that personalization may find it in this year's Parade home. They may even be inspired to try something bold and unexpected in their own home, and not necessarily follow the latest trends.

When it comes to trends, Alden Homes prefers to start their own.

"It all starts with the vi-

sion, and Bill has the vision to think outside the box," Hurst says.

In addition to the virtual Parade tour, visitors who want to see the Alden in person can stop by the community design center, 100

Freeman Drive, Lebanon, from 8 a.m. to 4 p.m. Monday through Friday and 1 to 4 p.m. Saturday and Sunday. Showings are also available by appointment by calling 717-376-1199.

Landmark: Brentwood

Continued from 4

cabinetry, and a mudroom entry with built-in bench off the two-car garage.

The first floor also features hardwood floors in the main living areas and lofty 10-foot ceilings.

The second floor includes

two additional bedrooms and a loft for flexible living space options.

Life in Home Towne Square includes amenities that extend beyond the homes themselves. The community offers a network of walking/biking trails,

pocket parks with relaxing gazebos and a picturesque streetscape.

There's also a private clubhouse, or Towne Hall, with fitness equipment, a library, kitchen and plenty of space for all the social activities of the neighborhood, from parties to group meetings.

Home Towne Square offers low-maintenance living,

meaning there's no worry about yardwork in warmer weather or shoveling snow in the winter. That means there's more time for residents to simply lock and go, whether they want to enjoy community amenities, visit local attractions, or take a daytrip to Philadelphia, Baltimore or New York.

Home Towne Square is

now in its final phase. In-person and virtual appointments are available 10 a.m. to 5 p.m. Tuesday through Saturday. For more information, visit OwnALandmark.com or contact community sales manager Kirsti Collins at 717-419-1488 or KirstiC@OwnALandmark.com.

tion, visit OwnALandmark.com or contact community sales manager Kirsti Collins at 717-419-1488 or KirstiC@OwnALandmark.com.

YOUR LOCAL HARDWARE STORE



YOUR KITCHEN & BATH DESIGNERS





YOUR FULL SERVICE LUMBERYARD

WILLOW STREET, PA | 717-464-2999 | GRMITCHELL.COM

YOUR CUSTOM MILLWORK SHOP

GRMITCHELL.COM

COLDWELL BANKER

RESIDENTIAL BROKERAGE

Jeanne Walk

CRS, ABR, E-Pro, GREEN ASSOCIATE BROKER

Office: 717.735.8400

Mobile: 717.615.3344

Fax: 717.735.2207

www.WalkHome.org

jeannewalk@comcast.net

1000 N. Prince St., Lancaster, PA 17013

Operated by a subsidiary of NRT LLC.



Nature put the beauty in the wood.

We bring it out.



Since 1924

Galebach's

Floor Finishing, Inc.

717-898-9680

www.galebachsfloorfinishing.com

Specializing in Residential Wood Floor Refinishing



Glen Mary debuts at Landis Farm

**SPONSORED BY
EGSTOLTZFUS HOMES**

The Parade of Homes is an opportunity to inspire the public with the latest in home design and industry trends. This year, EGStoltzfus will offer that inspiration in the form of a brand-new home plan.

The Glen Mary is making its debut in the Landis Farm neighborhood in East Hempfield Township, but it will be available in select other EGStoltzfus neighborhoods as well.

Visitors to the virtual Parade tour can get their first look at the Glen Mary — a four-bedroom, two-and-a-half-bath home with a functional floor plan and 2,700 square feet of living space.

Outside, the Glen Mary at Landis Farm features a shake-and-siding exterior and covered front porch. Inside, the home offers great

sight lines from the main entrance, with an open formal dining room and office space at the front of the home and a clear view of the main living area.

In these days of working and learning from home, the flexible, private office/study is the perfect “Zoom Room.”

However, the heart of the Glen Mary is its large open living area with tons of natural light. The kitchen features a long island with bar seating that overlooks a family room with gas fireplace. The kitchen also opens to a sunny morning room with access to a covered backyard porch.

A convenient family entry off the garage includes a drop zone space off the morning room and kitchen.

Upstairs, the Glen Mary boasts a spacious owner's suite with private bath and walk-in closet, along with three additional bedrooms,

two of which also have walk-in closets. The second floor also has a laundry room and an optional 12-by-12-foot storage space.

There is also optional storage space in the garage, perfect for toys or even a home gym.

There are 35 home sites in the fourth and final phase of Landis Farm, which was announced this summer. Four of those home sites are already sold.

The Glen Mary is one of 14 home plans available at Landis Farm, a destination neighborhood in the Hempfield School District that offers a host of amenities, including a community pavilion, walking trails, benches, meadows and green space.

Homes start in the lower \$400s.

The sales center at Landis Farm is open by appointment. Virtual appointments are also available. Call Leslie Rhinier, online sales consultant, at 717-537-6968 to schedule.

You can also visit EGStoltzfusHomes.com and take virtual tours of the most popular home plans, many of which are available at Landis Farm.

Directions to Landis Farm: From Lancaster, take Harrisburg Pike to Bowman Road. Turn left onto Bowman Road, then right onto Nisley and right again on Pennscott Drive. Model home sales center is on the left.



Above: The Glen Mary kitchen overlooks the family room and a sunny dining area with access to a covered backyard porch.



Left: The private office/study is perfect for working or learning from home.



The Glen Mary is the newest floor plan at Landis Farm.

BRINGING THE WORLD'S BEST HARDWOOD FLOORS TO YOU

At Hardwood Floors of Lancaster, we strive to be different by exceeding our clients' expectations in flooring quality, sample selection, staff experience, and unparalleled attention to installation craftsmanship. We have a wide selection of true hardwoods in various finishes, colors, and levels of distress.

Once you've narrowed down your search in our showroom, it can be helpful to have a physical sample of wood options to reference. While many home or business owners settle for imagining how their new flooring will look, nothing can compare to acquiring wood floor samples to see them in person. If you have a unique design or style in mind, we'll develop a custom sample in our flooring design warehouse that meets your exact specifications. Sometimes when people hear about custom services, they assume that it's out of their price

range. However, we strive to keep our pricing fair and competitive with the big names in the industry. Once you've chosen a sample or have had a custom sample made, we encourage you to take your sample home so you can see the flooring firsthand in the space where you intend to have it installed.

Come into Hardwood Floors of Lancaster and let us explain the features and benefits of all your options. We can help you make informed decisions when investing in your flooring.

Hardwood Floors OF LANCASTER

501 SERVICE ROAD, SUITE 1 • LANCASTER, PA
(717) 584-8658 • HWFLOORSLANC.NET

NEW ROOFS & SIDING: TRY BEFORE YOU BUY

Getting a new roof and siding is one of the most exciting and popular ways to make a major home renovation. An updated exterior can instantly transform your home into a more protective, safer structure, while also looking amazing.

But, let's face it, not all of us have an eye for exterior decorating and selecting the right shingle or siding color, and that's perfectly fine! That's why folks like Greenawalt exist—to help walk homeowners through the process of getting a new exterior, from concept to completion.

Unlike previous decades, home builders now have so many materials to choose from. From asphalt to tile, there are many options to consider, and the same goes for siding.

As a CertainTeed 5-Star SELECT ShingleMaster, Greenawalt loves introducing our customers to a helpful, easy-to-use (and downright fun) online tool called **ColorView**®.

ColorView allows us to show homeowners how various products will look on their homes, before we hammer a single nail.

Once photos of the home are uploaded to the app, the exterior and roof can be masked over with virtual layers of CertainTeed premium siding and roofing products, as well as shutters, doors, and trim.

Before

After

MY NEW EXTERIOR

ROOFING
LANDFARM PREMIUM - DARK GREY ROOF BLACK

SIDING - PAIR
D7 5" HANGOUT SUEDE ROUGH-SPLIT SHAKES - PACIFIC BLUE

SIDING - DECORATIVE
D7 5" STRAIGHT EDGE ROUGH-SPLIT SHAKES - PACIFIC BLUE

SHUTTERS - ACCENT

Visit www.greenawaltroofing.com/colorview to try for free today!

GREENAWALT

ROOFING • SIDING • GUTTERS

PA 36262