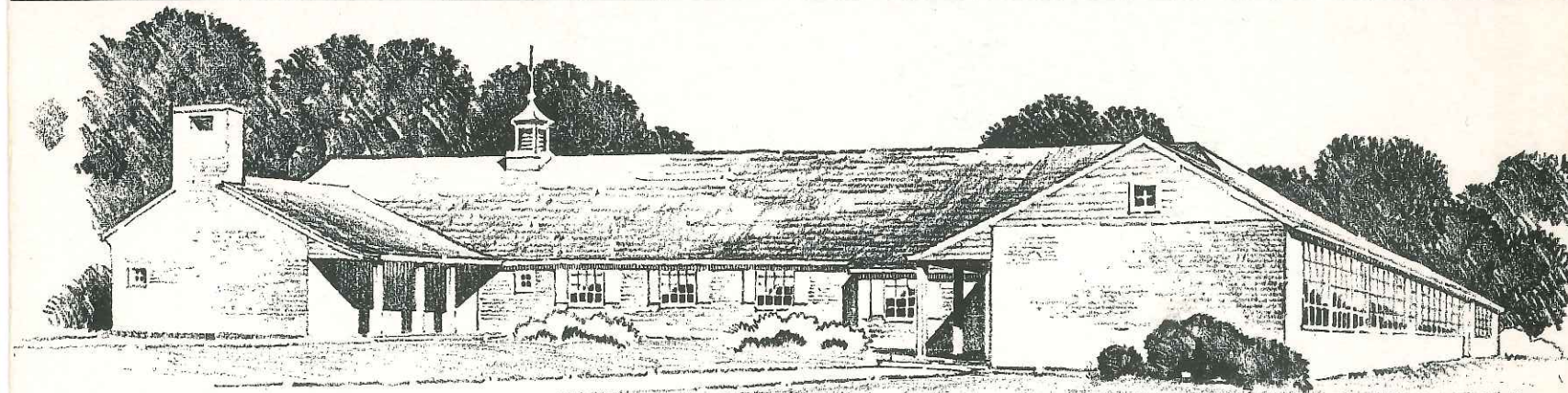
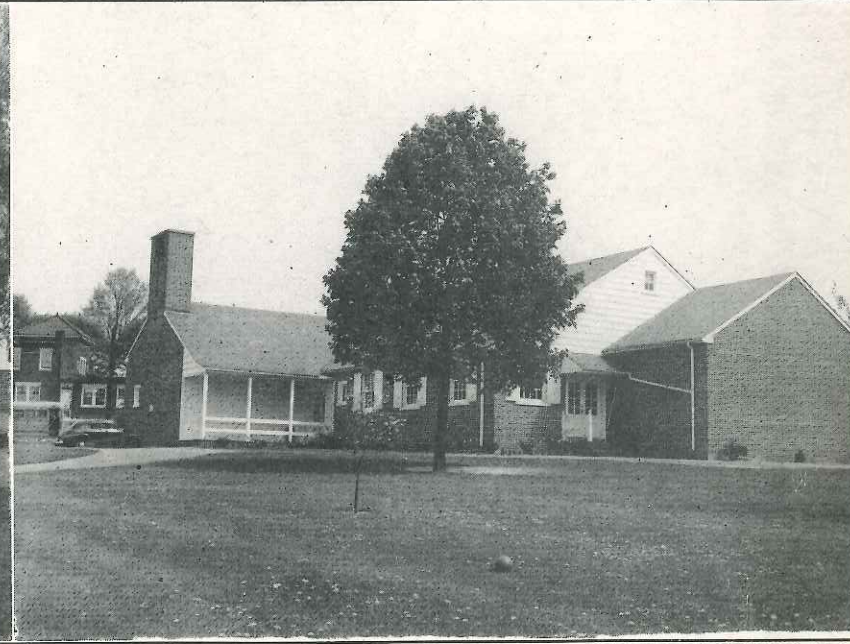


Better Schools--

FOR YOUR CHILDREN
IF YOU WANT THEM



Disapproval Will-

1. Force the children at the Hambright School to continue in overcrowded quarters.
2. Deny the children in the Hambright area the benefits of a proposed hot lunch.

Vote . . . Y E S
November 7, 1950

for proposed increase of debt of the
MANOR TOWNSHIP SCHOOL DISTRICT
LANCASTER COUNTY, PENNSYLVANIA

A Cross (X)

marked in the square at the right of the word "YES" indicates a vote FOR the increase of debt.

A Cross (X)

marked in the square at the right of the word "NO" indicates a vote AGAINST the increase of debt.

A. N. RANCK, Supervising Principal
GEORGE S. KURTZ, Secretary
32 Princeton Ave.,
Lancaster, Pa.

Board of Directors
of
Manor Township School District
Millersville, Pennsylvania

Dear Fellow Citizen:

Unprecedented growth in the population of Manor Township makes necessary certain improvements in the school system.

To provide adequate facilities for the children now attending the four one-room schools in the southern section of the Township, and for the children attending the Hambricht elementary school, your Board of Education proposes to build a new elementary school near Creswell and close the one-room school buildings. Two additional classrooms and a utility room will be added to the Hambricht building to provide for the increased enrollment.

This section of the Township has witnessed a building boom, the extent of which has never been equaled and actual school enrollment makes it imperative that additional facilities be provided at once.

This booklet is presented to you and designed for the purpose of acquainting you with the important facts confronting those now responsible for the present educational facilities and the projected plans for the future.

The decision marking a backward or forward step for your children is being requested of you on November 7, 1950, at which time your approval for a loan of \$95,000.00 is sincerely solicited.

Give your children a better opportunity!"

Why

Do We Need to Build?

1 The erection of new homes in the Hambright area in recent years, the increase in number of children born, and the prospect of continued home building are adding to the Hambright enrollment figures. The primary rooms at Hambright are now crowded and the enrollment has now reached a point where two grades cannot be accommodated in one room.

2 We need to build because our four remaining

Children Attending These Schools Deserve Better Facilities

*than
this*



HIGHVILLE SCHOOL



Crowding Handicaps Pupils



This elbow to elbow cramping is an example of what the situation will be if two grades must be crowded into one room at the Ham-bright School.



In unspaced

HOW CAN THESE PROJECTS BE FINANCED?

When you vote in November you will be asked to approve a loan of \$95,000.00. This amount is necessary to cover the cost of the general contract, furnishings, architect's fee, legal fees, and other necessary items for additional classrooms and other facilities at the Hambright School.

To finance the Creswell building, a local "School Authority" has been created. This "Authority" will lease the school building to the School District during a period of thirty years for an annual rental sufficient to retire the bonds, at which time the "Authority" will be dissolved and the building will be transferred to the School District.

After bids come in, the "Authority" may discover that building costs are actually lower than anticipated. In this event, the "Authority" need issue bonds equivalent only to the actual cost.

WHAT WILL THE \$95,000.00 LOAN DO?

1. Provide two additional classrooms, a health room and an all-purpose room, including cafeteria, at the Hambright School.
2. Equip and furnish new rooms.

WHAT WILL THE "AUTHORITY" BONDS DO?

What's Our Present Bonded Debt?

Bond Issue of 1922 (Due to be paid off in 1952).....	\$70,000
Bond Issue of 1936 (Due to be paid off in 1956)	<u>13,000</u>
TOTAL.....	\$83,000

but- Money is NOW available in Sinking Fund to pay off 1922 Bond issue ~~**\$70,000**~~

so- Our bonded debt is REALLY ONLY **\$13,000**

and- if construction costs are found to be less than estimated, this new loan will be less than \$95,000.00

RAISING THE \$95,000.00

The \$95,000.00 is to be borrowed from a reliable banking firm. Retirement of these bonds will be paid from tax revenue over a period of thirty years. The "School Authority" bonds will be retired in the same

Disapproval Will-

1. Force the children at the Hambright School to continue in overcrowded quarters.
2. Deny the children in the Hambright area the benefits of a proposed hot lunch.

Vote . . . Y E S
November 7, 1950

for proposed increase of debt of the
MANOR TOWNSHIP SCHOOL DISTRICT
LANCASTER COUNTY, PENNSYLVANIA

A Cross (X)

marked in the square at the right of the word "YES" indicates a vote FOR the increase of debt.

A Cross (X)

marked in the square at the right of the word "NO" indicates a vote AGAINST the increase of debt.