



Marina
Secretaría de Marina



MARINA



PORT OF GUAYMAS



2026
año de
**Margarita
Maza**

Port of Guaymas



Marina
Secretaría de Marina



(Business Lines)

- Bulk Mineral
- Bulk Grain
- Containers
- General Cargo
- Fluids
- Oil
- Cruise Ships
- Vehicles (Project)

Current area
83.35 Ha.

Draught
16 m.

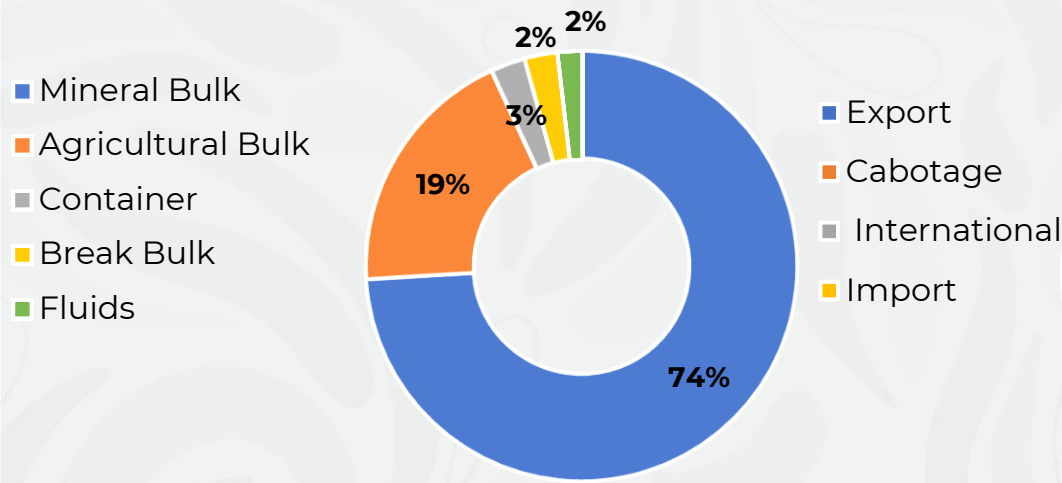
Berthing positions
6

Water Surface
available
6,399 Ha.

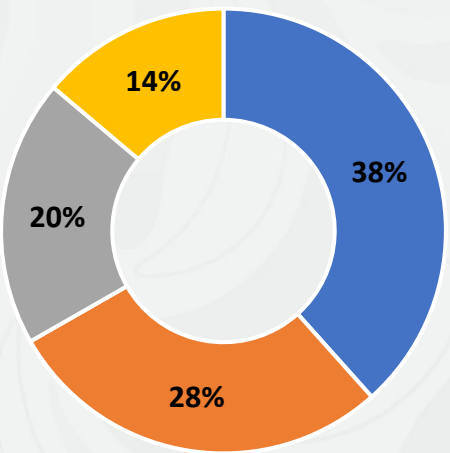
Capacity of
operations
14.2
Million tons.

STATISTICS

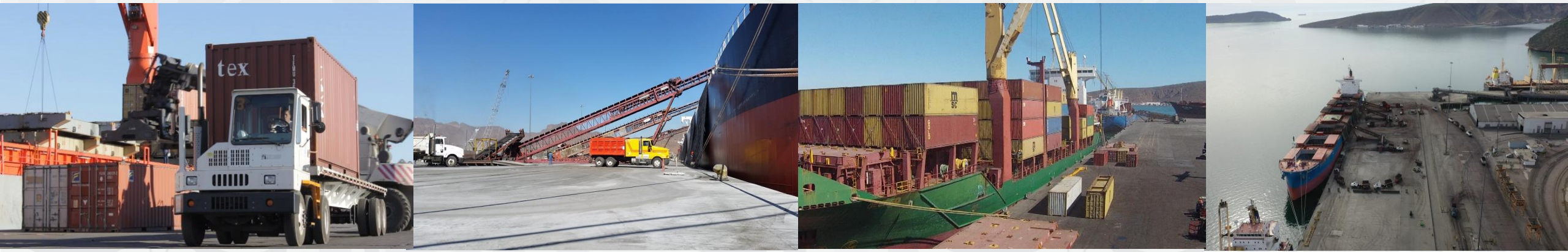
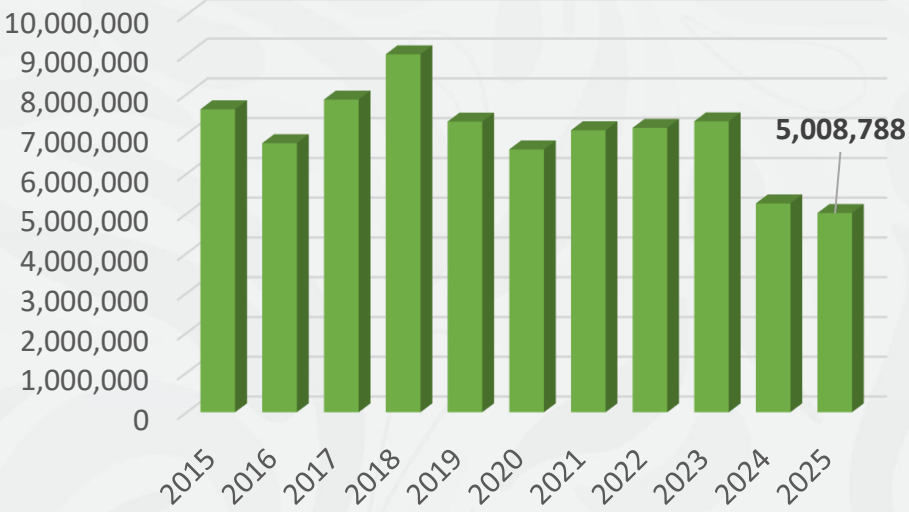
MAIN COMMODITIES



TYPE OF TRAFFIC



TOTAL CARGO MOVEMENT



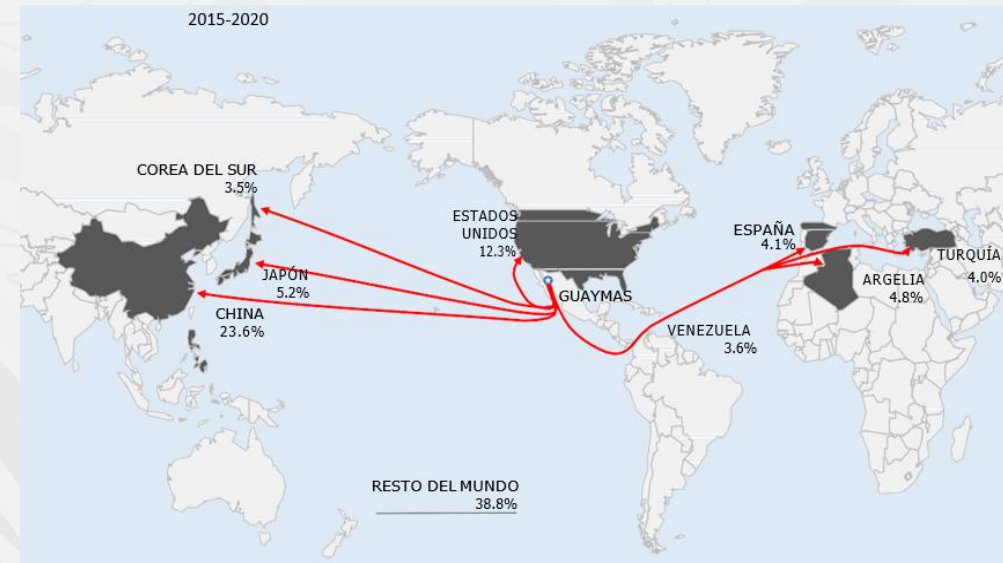
HINTERLAND - FORELAND

- The influence area from the port of Guaymas or Hinterland, for its location, has a character of international Port, the access maritime way from the international commerce routes it takes place in the Pacific Ocean and Sea of Cortes. The Influence Zone it represented by Sonora, Southern Baja California, Chihuahua, Sinaloa, and Arizona.

- Sonora
- Chihuahua
- Baja California Norte
- Baja California Sur
- Sinaloa
- Jalisco
- Michoacán
- Oaxaca



- Foreland.- The state and the economy from Sonora holds a solid commercial attachment in the southern region from the United States, mainly with Texas, New Mexico, Utah, and Arizona, being the last one the economic Zone with more growing and dynamic from the U.S.A.

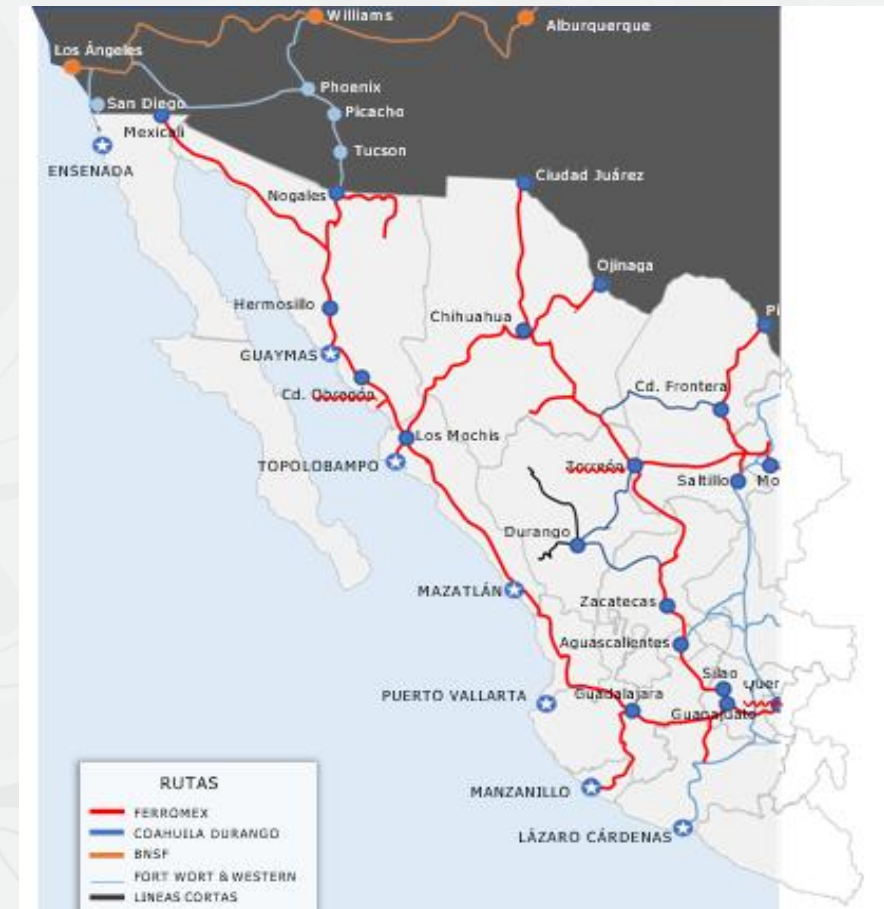


CONNECTIVITY

Road connections to the northwest of Mexico and the southwest of the United States



Railway connections in the Northwest of Mexico and the Southwest of the United States



CONNECTIVITY



80% of the port's cargo is moved by rail and 20% by trucks

MODERNIZATION PROJECTS OVERVIEW: 2022-2025

The Federal Government of Mexico, through the Mexican Navy (SEMAR), modernized the port's infrastructure with 13 strategic projects and an investment of **\$202.36 million USD**, carried out from 2022 to 2025.



13

STRATEGIC
PROJECTS

\$202.36

MILLION USD

PERIOD

2022-2025

MODERNIZATION PROJECTS: 2022–2025

1



OPEN STORAGE AREAS

- New 24,000 m² bulk storage capacity.
- Investment: 12.2 million USD

2



DREDGING WORKS

- Navigation channel and docking area dredging.
- Investment: 17.7 million USD

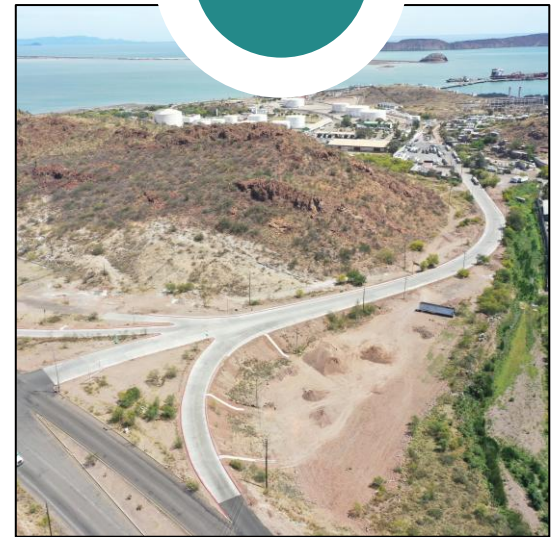
3



COLD STORAGE FACILITY

- Installation for dynamic inspection of refrigerated containers.
- Investment: 89 K USD

4

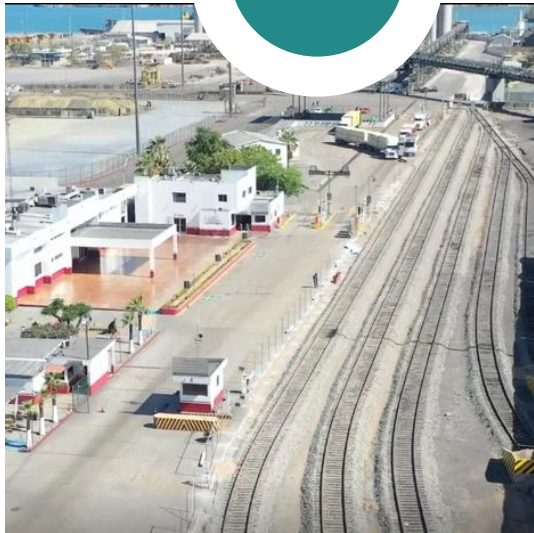


PORT ACCESS ROAD MODERNIZATION

- Renovation of 3 km of concrete roads.
- Investment: 9 million USD

MODERNIZATION PROJECTS: 2022–2025

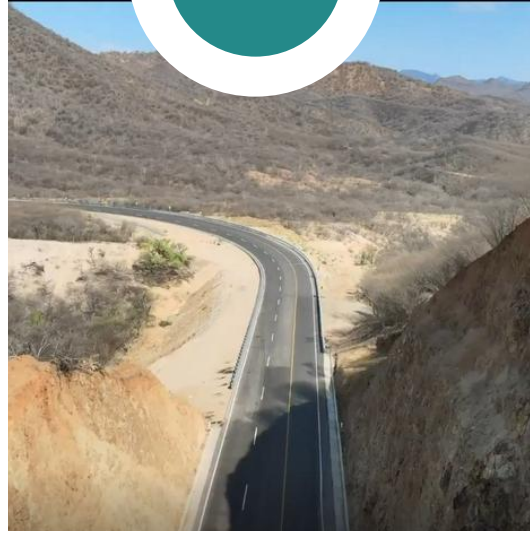
5



INTERNAL RAILWAY MODERNIZATION

- New tracks to improve rail entry and exit.
- Investment: 7.33 million USD

6



GUAYMAS-CHIHUAHUA HIGHWAY UPGRADE

- 48 km road for safe connection to Chihuahua.
- Investment: 85 million USD

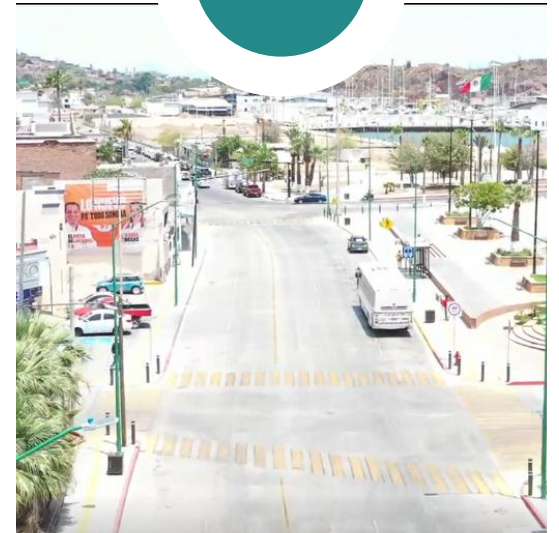
7



BULK STORAGE WAREHOUSE

- 10,500 m² warehouse for mineral handling and dust reduction.
- Investment: 5.6 million USD

8



SEWER AND DRAINAGE WORKS

- Infrastructure improvements for optimal road transit.
- Investment: 5 million USD

MODERNIZATION PROJECTS: 2022–2025

9



CRUISE TERMINAL UPGRADES

- Reinforcement for general and roll-on/roll-off cargo.
- Investment: 4.64 million USD

10



NEW MULTIPURPOSE TERMINAL

- 329 linear meters of dock for container and general cargo.
- Investment: 26.4 million USD

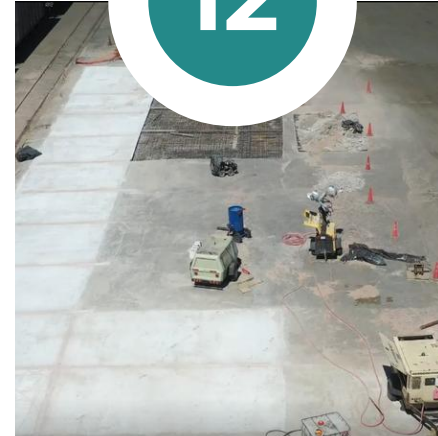
11



ASIPONA OFFICE RELOCATION

- New administrative offices outside the port to expand storage.
- Investment: 9 million USD

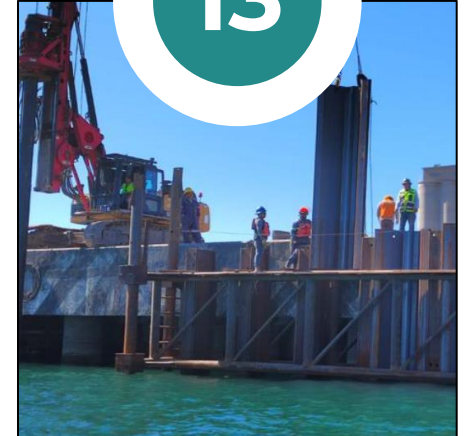
12



PORT INFRASTRUCTURE MAINTENANCE

- Repairs and maintenance of docks and defenses.
- Investment: 6.8 million USD

13



SHEET PILING WORKS

- Structural safety maintenance of public docks.
- Investment: 12.8 million USD

CURRENT CONTAINER CARGO SERVICE

CURRENT CONTAINER CARGO SERVICE

The Port of Guaymas in alliance with MSC offer the regular service of containerized cargo every 12 days.

Annual Volume: 16,000 teus

COMPETITIVE ADVANTAGES

- Regular Service of Containerized Cargo by Mediterranean Shipping Company (MSC), which is the second Shipping Company around the world in containerized cargo movement.
- The Port has 2 Multimodal Corridors (Guaymas- Arizona, Guaymas- Mexicali)
- The Port is 400 km. from the border with Nogales, Az.
- Ferromex/Union Pacific work together with the Port of Guaymas moving 2 million of tons. in international transit.
- The Port has an area denominated Logistics Trade Zone (ZAL) of 88 has. For storage at 10km from the Port.
- Strategic Alliance with the dry Port of Tucson, Az.
- Scanning of cargo containers by Gamma Ray equipment system.



CONTAINER CARGO



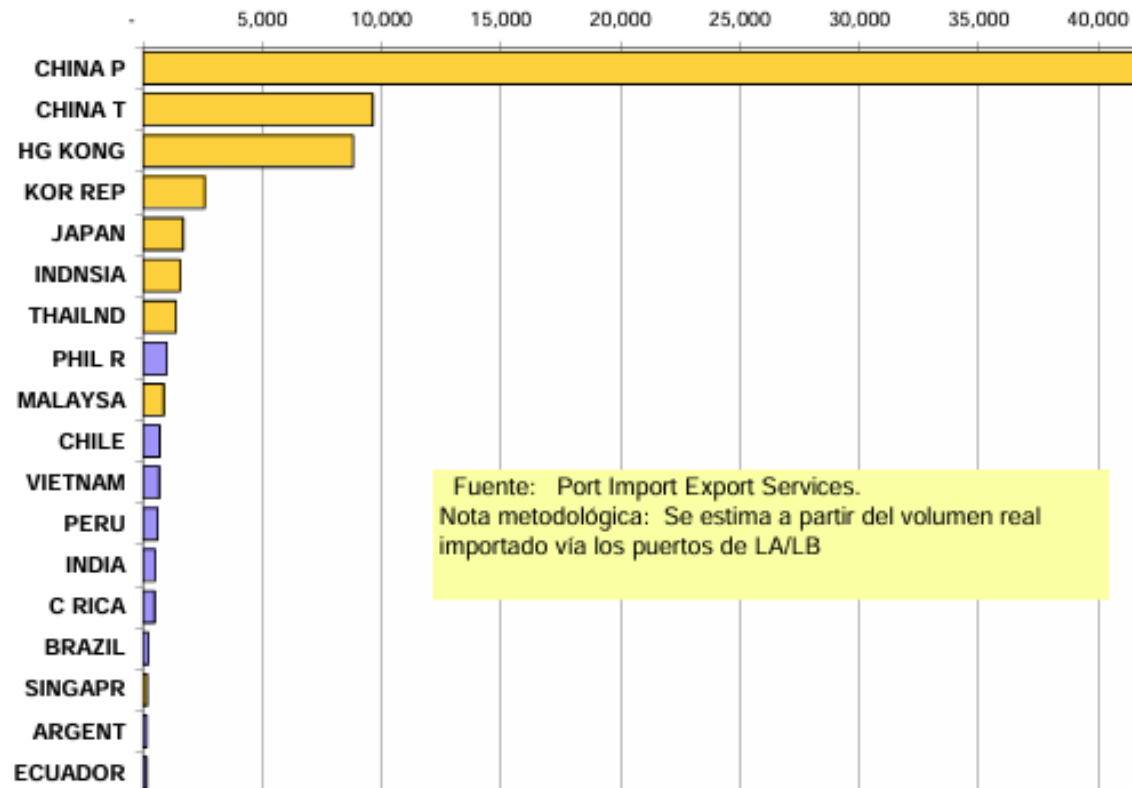
1st Stage: Attract 100% (40,000 TEUs) of domestic land cargo originating/destined for Sonora



Fuente: WSP, 2020.

2nd Stage: Capture of 7.5% (154,000 TEUs) of cargo from LA/LB destined for Texas. Increase in containerized cargo volume: from 16,000 to 210,000 TEUs

ARIZONA CONTAINER CARGO



Fuente: Port Import Export Services.
 Nota metodológica: Se estima a partir del volumen real
 importado vía los puertos de LA/LB

COMMODITY (7)	TEUS	%
FURNITURE, FIXTURES; NOS (* 7275)	12,570	15%
TILES; BISCUIT,CERAMIC,MOSAIC	4,137	5%
PET; EQUIPMENT,SUPPLIES	3,574	4%
GAMES, SPORT, PLAYGROUND EQPT, TOYS	3,211	4%
COMPUTERS, DATA PROCESS MACH, PARTS	3,149	4%
AMPLIFICATION EQUIPMENT	3,056	4%
PLASTICWARE; FLOWER,STYROFOAM,TILES	2,966	4%
MISCELLANEOUS	2,802	3%
ELECTRIC COMPONENTS, SUPPLIES	2,533	3%
HAIR CURL & DRY DEVICE, FACE SAUNA	2,227	3%
ELECTRIC HEATING APPLIANCES	2,188	3%
HARDWARE; NOS (* 64565/6494)	2,039	2%
TELEVISION APPARATUS, VIDEO RECORD	1,873	2%
HANDBAGS, WALLETs	1,629	2%
ELECTRIC APPLIANCES; NOS	1,511	2%
PARTS; AUTOMOBILE,MOTOR VECHILES	1,462	2%
SUBTOTAL	50,927	61%
TOTAL	83,542	100%

ARIZONA CONTAINER CARGO

Componente Carretero. Demanda Actual

Nodo	Lineas	Volumen/Hr	Capacidad	Utilización
Guaymas	2	268.15	1180.33	23%
Caseta 1	3	140.00	1050.00	13%
Hermosillo3	2	556.05	1142.86	49%
Caseta 2	3	356.27	1050.00	34%
Benjamin Hill	2	226.17	702.00	32%
Santa Ana	2	173.71	1152.00	15%
Caseta 3	3	224.00	1050.00	21%
Imuris	2	224.16	1152.00	19%
Caseta 4	3	294.00	1050.00	28%
Nogales, AZ	3	872.00	1672.00	52%
Tucson	2	4283	4271	100%

Fuente: AZU; Logistics Capacity Study of Guaymas-Tucson Corridor, 2005

Componente Carretero. Demanda modificada por proyecto

Nodo	Lineas	Volumen/Hr	Capacidad	Utilización
Guaymas	2	280.72	1180.33	24%
Caseta 1	3	140.00	1050.00	13%
Hermosillo3	2	567.10	1142.86	49%
Caseta 2	3	366.02	1050.00	35%
Benjamin Hill	2	238.49	702.00	34%
Santa Ana	2	182.78	1152.00	15%
Caseta 3	3	234.17	1050.00	22%
Imuris	2	234.17	1152.00	19%
Caseta 4	3	308.50	1050.00	29%
Nogales, AZ	3	889.85	1672.00	53%
Tucson	2	4298.00	4271.00	101%

Fuente: AZU; Logistics Capacity Study of Guaymas-Tucson Corridor, 2005



Marina
Secretaría de Marina



MARINA



MULTIPURPOSE TERMINAL

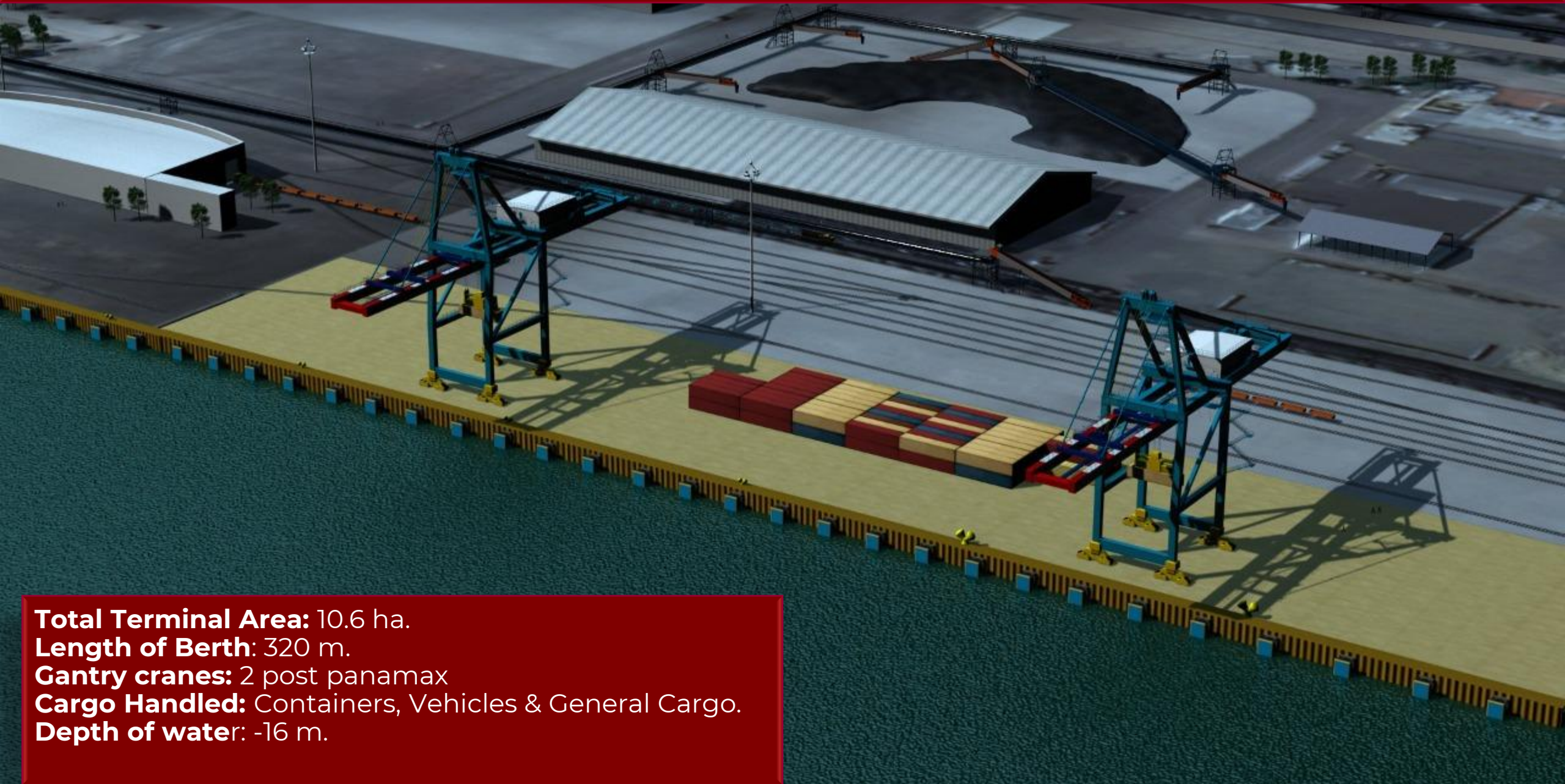


2026
año de
**Margarita
Maza**

MULTI-PURPOSE TERMINAL



MULTI-PURPOSE TERMINAL



Total Terminal Area: 10.6 ha.

Length of Berth: 320 m.

Gantry cranes: 2 post panamax

Cargo Handled: Containers, Vehicles & General Cargo.

Depth of water: -16 m.

MULTI-PURPOSE TERMINAL

Dock Operation Area: 2.4 has.

Containers Patio: 4.4 has.

Expansion Container patio: 3.8 has.

Cranes: 2 post panamax

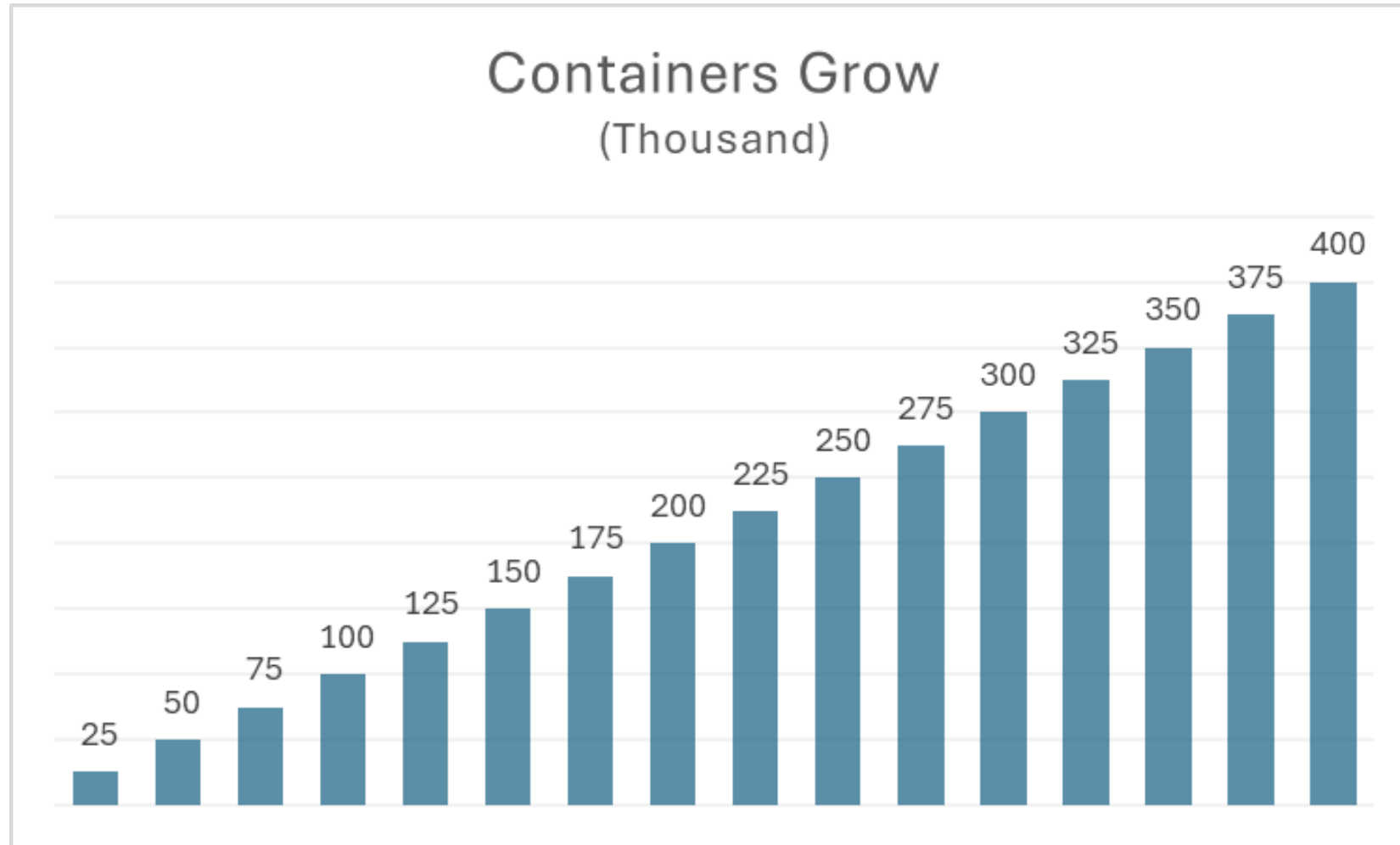
Contract : 40 years



MULTI-PURPOSE TERMINAL



MULTI-PURPOSE TERMINAL





Marina
Secretaría de Marina



MARINA



GUAYMAS EXPANSION



2026
año de
**Margarita
Maza**

GUAYMAS PORT EXPANSION PROJECT

Guaymas Port Authority



Total Investment

Basic Infraestructure Basic

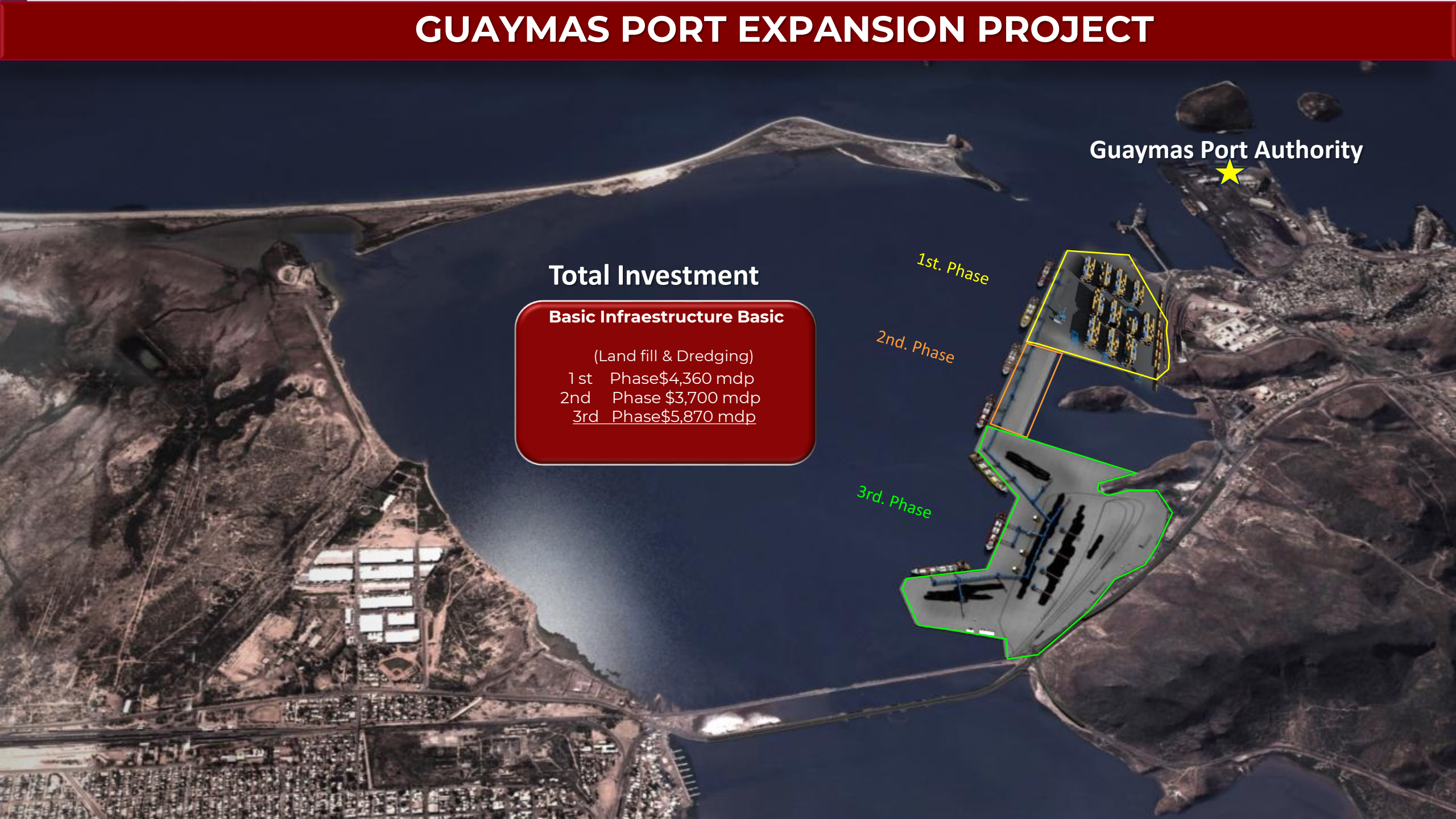
(Land fill & Dredging)

1 st Phase \$4,360 mdp
2nd Phase \$3,700 mdp
3rd Phase \$5,870 mdp

1st. Phase

2nd. Phase

3rd. Phase



PORT EXPANSION PROJECT



Marina
Secretaría de Marina

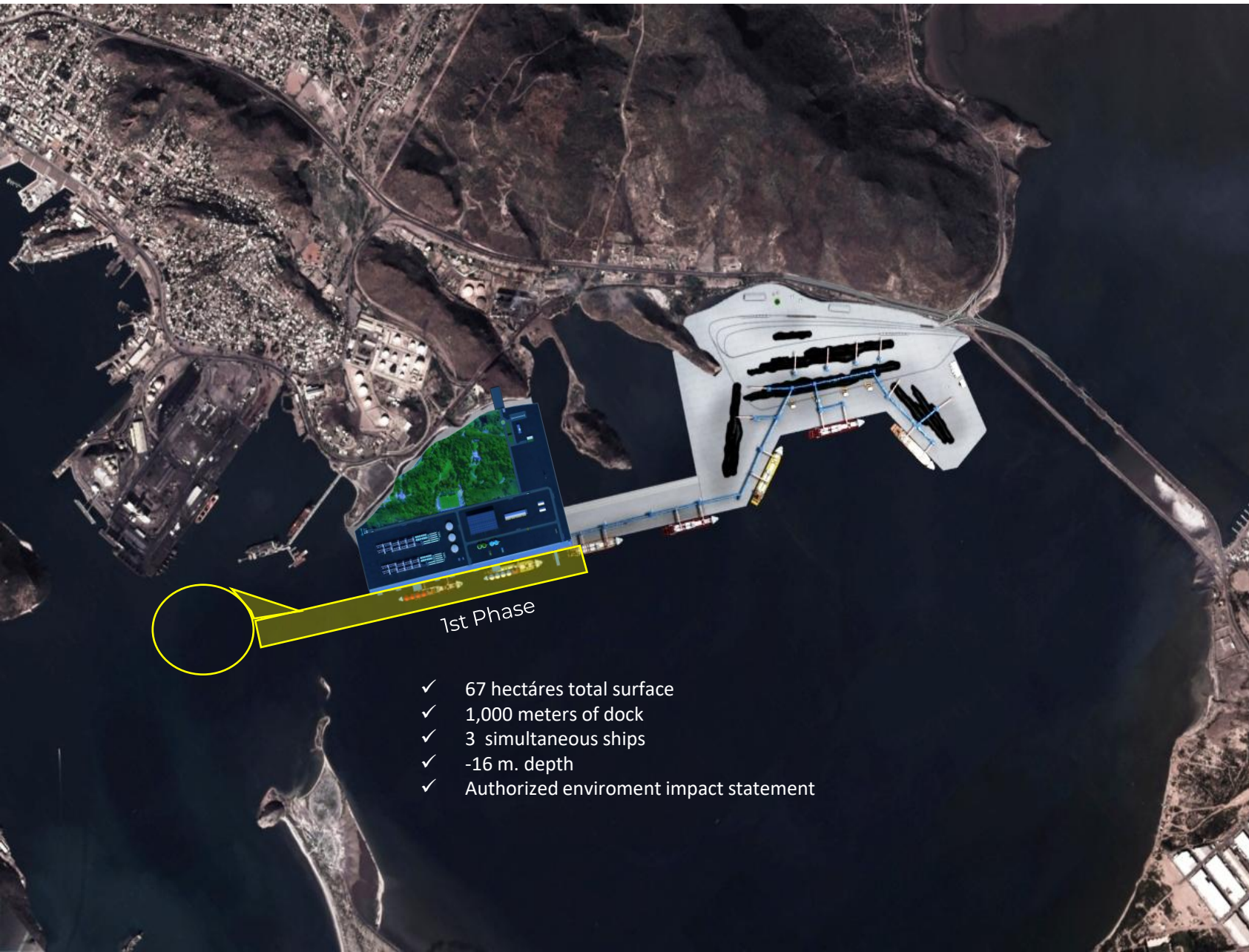


The Strategic Project of the Expansion Guaymas- Empalme Bay.

The First stage of the project involves the dredging of 5 million cubic meters of navigation area, consisting of the construction of a navigation channel with a length of 1.68 kilometers and a turning basin of 600 meters, all at a depth of -16 meters.

The project involves a filling area of approximately 67 hectares, which operate as multipurpose terminal for handling bulk minerals and containerized cargo, the platform will feature a thousand (1,000) lineal meters band to dock three ships up 300 meters long.

The expansion project of the port of Guaymas is intended to be developed by private investors who can build the basic maritime port infrastructure, so this allows the installation of new port terminals which increase port services that Guaymas offers and in turn generating new direct jobs.



1st Phase

- ✓ 67 hectáres total surface
- ✓ 1,000 meters of dock
- ✓ 3 simultaneous ships
- ✓ -16 m. depth
- ✓ Authorized enviroment impact statement

PORT EXPANSION PROJECT

(2nd. & 3rd. Stage)



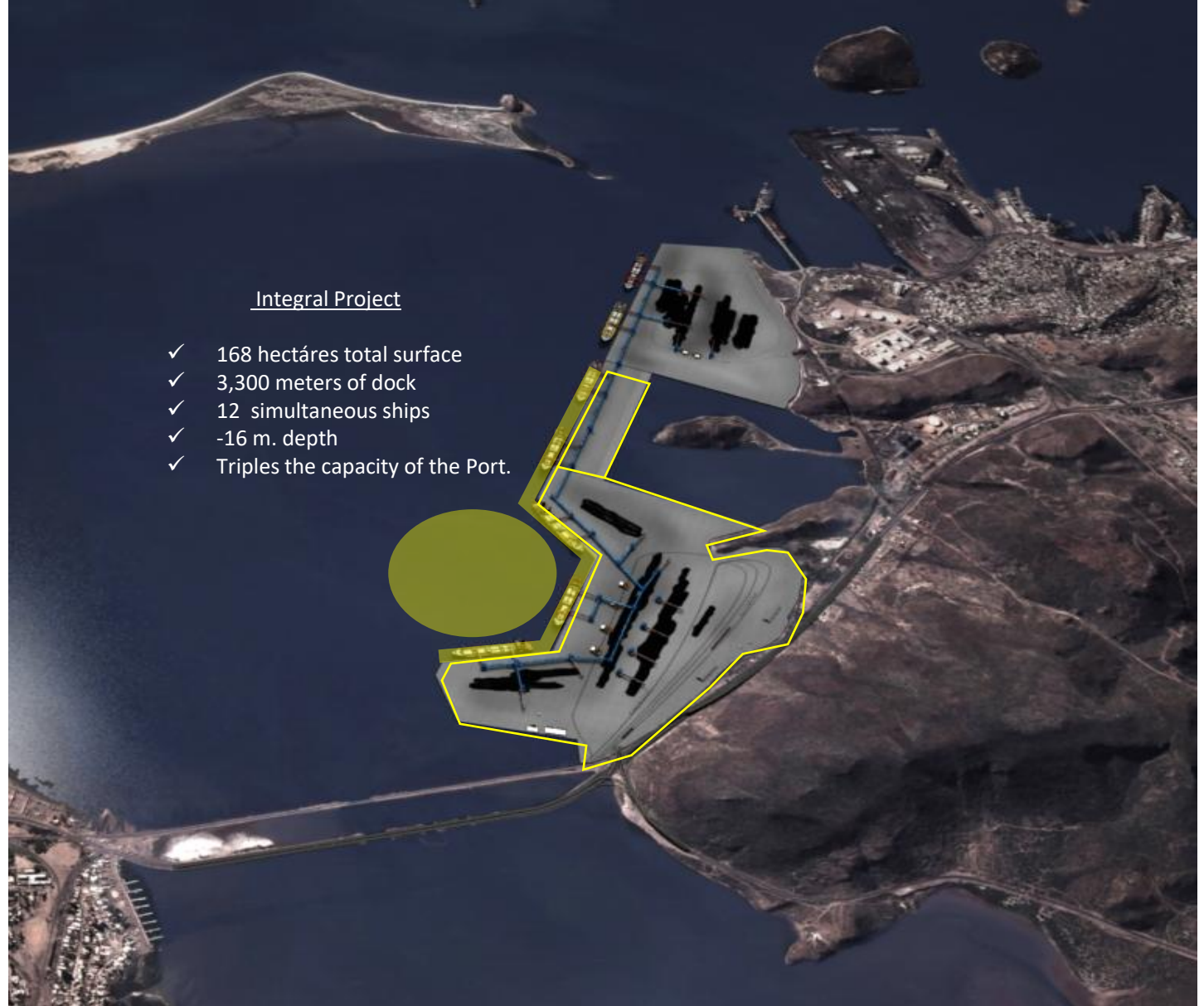
Marina
Secretaría de Marina



The second stage of the project will consist of building a communication platform (central) of an area of approximately 15 hectares. substructure formed from battery / pile permitting circulation of water, a waterfront 800 lineal meters and dredging of 1.770 m3.

The third stage of the project involves dredging of 13 million cubic meters of navigation area, the construction of a turning basin of 500 meters in diameter, all at -16 meters deep and filling about 85 hectares the construction of specialized terminals for receipt and shipment of mineral bulk and containerized cargo, which will have a water front up to 2,200 meters.

As a complementary work to the Expansion Project to access the navigational channel 230 meters template would be proposed, and the construction of a new turning basin of 600 meters in diameter and extending the turning basin to 600 enabled during the second stage.





THANKS



2026
año de
Margarita
Maza