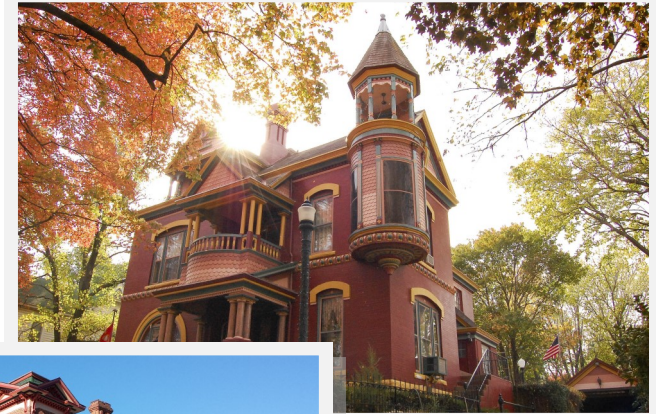
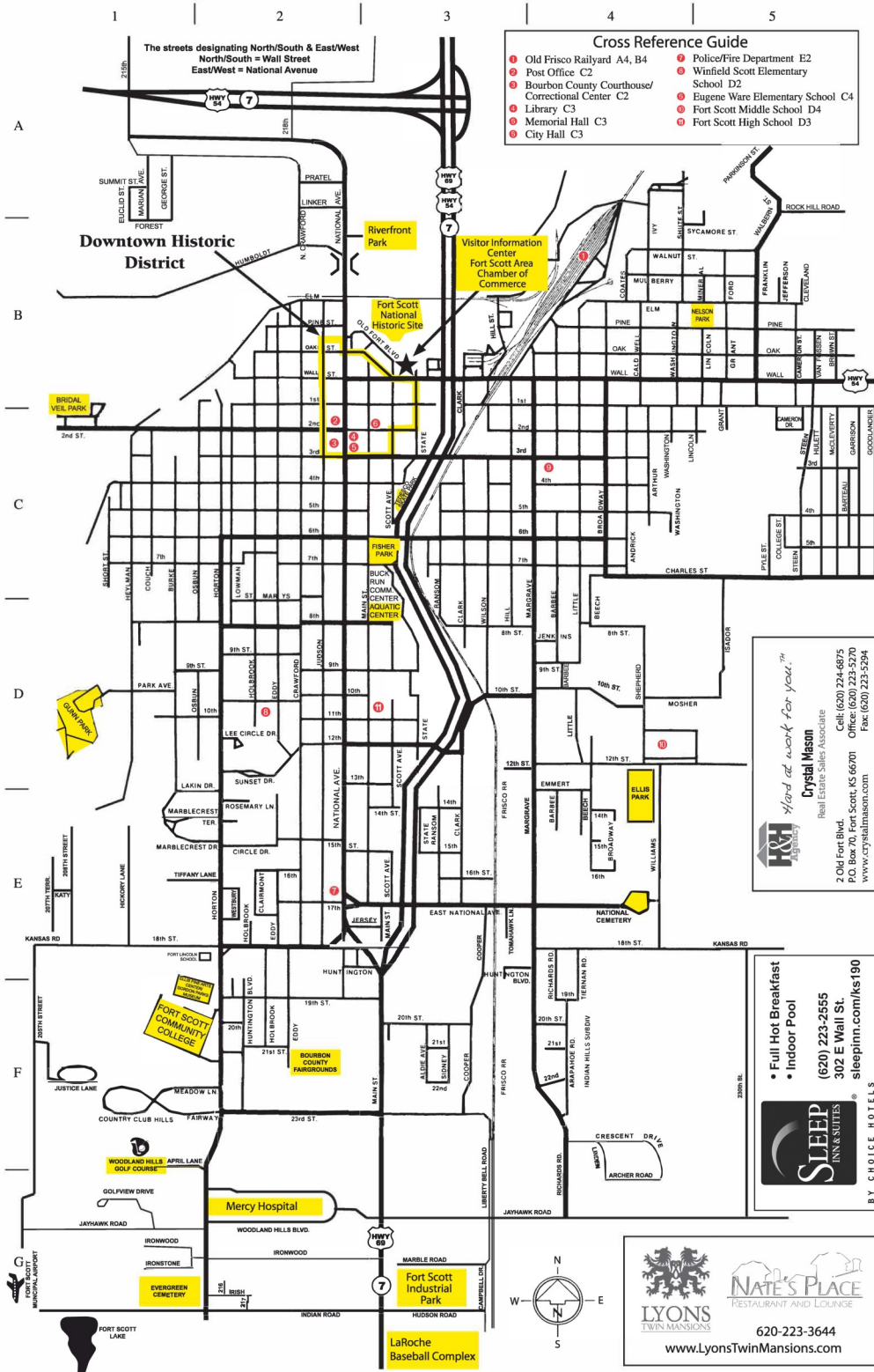


Self-Guided DRIVING TOUR

Historic Fort Scott, Kansas

Historic Properties & Notable Architecture



Tour begins geographically from the
Fort Scott Visitors Center
231 E. Wall Street ~ 620.670.2750
www.visitfortscott.com

Driving Tour Addresses & Notable Architecture:

1. Chamber of Commerce/Tourism Ctr. 231 E. Wall St.— Start your driving tour here, office is open M-F 8-5, Sat 10-4, free cookies & coffee, clean restrooms.
2. (1842) 1 Old Fort Blvd. - Restored military fort, Fort Scott National Historic Site
3. (1874) 219 E. Wall St. - Greek revival surrounded by effect of English cottage garden; dentil cornice & pediment detail supported by fluted columns; wide elliptical, broke-arch canopies span multiple windows.
4. (1890) 220 E. Wall St. - Projecting, deep, front canopy shelters glass, front doors leaded & beveled in pattern of intersecting arcs.
5. (1880) 124 N. Eddy - Eastlake style; originally designed to have a tower over front door. Reproduction of original pattern board under front porch; spindle-fan cornice brackets;; fish-scale shingles & turn-post.
6. (1883) 2. S. Eddy - French Renaissance Revival crowned w/iron filigree; full height colonnaded porte-cochere; Bandera stone sidewalk & curbing w/original carriage stoop.
7. (1863) 202 S. Eddy - Fish-scale shingles; turned balusters & spindles form wrap-around verandas on this former home of Eugene Ware.
8. (1905) 216 S. Eddy - Coursed & random ashlar Indiana limestone from the same batch as First United Methodist Church; balconied portico has Tuscan pillars & bulbous capitals.
9. (1880) 224 S. Crawford - Georgian Revival; fluted, bracketed cornices, arched lintels & multi-level bays.
10. (1901-1902) 124 S. Crawford - Crisp Greek Revival has two story portico w/square columns.
11. (1873) 2. S. Crawford - Palladian influences in arched window pediments w/bracketed sills.
12. (1887) 1240 S. Crawford - Queen Anne style; unique slant roof, fish-scaled eaves.
13. (1873) Old Congregational Church - 502 S. National, Restored edifice.
14. (1873) 524 S. Main - Georgian Revival house w/acanthus leaf-brackets; Corinthian capitals on the semi-circle full height tetra-style portico that has a balustrade front porch.
15. (1879) 512 S. Main - Simple Greek Revival brick with dentil cornice, pointed-arch lintels, stone sills, & oval, glazed front door.
16. (1883-85) 501 S. Main - Neoclassical brick has deep entablature w/stylized wave banding & wraparound porch w/fluted, tapered square columns.
17. (1887) 512 S. Judson - City's Queen Anne showcase, detailed w/paint, granite portico pillars, turned columns, balconies, oriels & glass that's stained, etched, beveled & patterned in curved & rectilinear windows.
18. (1884) 702 S. National - See #19 - duplicate houses.
19. (1884) 712 S. National - Greek Revival & Builders Vernacular touches, rectilinear stained glass window panels & wide entablatures trimmed w/recessed quatrefoil medallions.
20. (1884-1886) 747 S. National - Ribbed chimneys, fish-scale shingles & fan brackets on gables; leaded glass.
21. & 22. (1873) 742 & 750 S. National, - Lyons Twin Mansions, Italianate-influenced house twins, w/Moorish arch pediments; leaded & beveled glass towers w/painted pediments.
23. (1887) 812 S. National - Queen Anne w/ sheltered balustrade porches & balconies; metal acanthus-leaf pediment tops; front triple window w/trellis-paned, stained glass upper panel.
24. (1887) 820 S. National - Gothic revival, cylindrical corner tower topped w/an octagonal attic & turret.
25. (1882) 924 S. National - Iron filigree & turned balusters accent polygonal elements in Queen Anne house w/old iron fence. Here Ft. Scott native Gordon Parks filmed "The Learning Tree". Parks' mother had worked in this house.
26. (1884) 1012 S. National - Narrow town-house-type neoclassical residence w/ hexagonal slates laid in a pattern on north & south faces of the steep gabled roof.
27. (1882) 1202 S. National - Princess Anne farmhouse, originally a one-story; first story was lifted & a second story built beneath.
28. (1905) 924 S. Judson - Native stone porches including cylindrical front portico, fluted columns & corrugated roofing to simulate clay tiles.
29. (1911) 842 S. Crawford - Palladian attic-gable window; curvilinear, leaded & beveled glass in front door & sidelights.
30. (1889) 841 S. Crawford - Paint decorated band of patterned shingles, first level dental porch cornice & window trim w/ corner medallions.
31. (1887) 802 S. Crawford - Late Victorian Builders Vernacular; fish-scale shingles trim porthole attic window & screened attic porch; turret; arched brick lintels.
32. (1881) 801 S. Crawford - Tulip design in pink stained glass honors original owner, a pioneer nurseryman.
33. (1887) 716 S. Crawford - Rectilinear Eastlake influenced house w/cutout trim, pointed window pediments, wraparound porches.
34. (1887) 710 S. Crawford - Queen Anne & shingle style, w/two story wraparound verandas, stained glass window installed in the fireplace chimney.
35. (1919) 702 S. Crawford - Multiple curvilinear leaded & beveled glass north & south windows; simple cornice medallions.
36. (1886) 502 S. Eddy - Leaded & beveled glass cornice; dentil detail; original wrought & cast iron fence.
37. (1888) 510 S. Eddy - Modified Greek Revival frame house w/steps & curbs of original Bandera flagstone quarried in BB County.
38. (1860's) 716 S. Eddy - Mary Queen of Angels Rectory (Roman Catholic), Wood filigree arcaded portico w/canopy of embossed tin.
39. (1888) 601 S. Holbrook - Multiple chimneys, neoclassical & incised C-scroll brackets, varied window millwork designs & iron, filigree-topped, sheltered front portico.
40. (1908) 824 Burke - Blend of Colonial Revival & shingle-style w/porte-cochere connecting buff brick & shingle main house w/garage.
41. (1870-1872) 1110 Burke - Clapboard w/ Colonial Revival touches; segmented, round window above columned portico.
42. (1873) 1124 Burke—Paint emphasizes neoclassical influences; simple scroll cornice brackets, gables, & porte-cochere; abundant leaded, beveled glass.
43. (1890) 1202 Burke - Varied gables & roof line; front attic window arabesque-trimmed; arched overhang & ball-turned railing.
44. (1893-95) 1216 Burke - Doric-colonnaded front porch & 2nd level front balcony.
45. (1893) 1222 Burke—Neo-Gothic corner cusped-arch brackets & Eastlake porch influences.
46. (1881) 2102 S. Horton - Fort Lincoln School, restored one-room schoolhouse.
47. (1862) 702 E. National, National Cemetery No. 1
48. (1870) 619 State - Cut native stone & arched lintels & neoclassical trim; thick walls provide window seats downstairs.
49. (1880's) 520 Ransom - Gingerbread trimmed cottage; lattice & wheel bracket front awning; basket-weave & spindle porch detail.
50. (1870) 407 S. Wilson - Stone walls 24 inches thick provide a seating alcove for each window.
51. (1890) 301 Arthur - Modified Greek revival tetra-style portico.
52. (1880's—1906) Restored Downtown Area, listed in the National Register of Historic Places.

More things to do & see in FS:

Fort Scott National Historic Site
Brand new exhibits! 12 bldgs. on tour.

Lowell Milken Center for
Unsung Heroes—exhibits and stories

Gordon Parks Museum for Culture & Diversity—photography exhibit

Visit visitfortscott.com for more info.