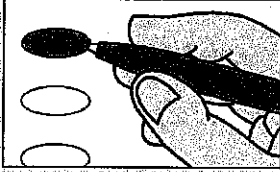


11 **State of Kansas Official Special Election Ballot**
County of Crawford, Kansas April 11, 2023

Instructions

Question Submitted

Making Selections



To vote in favor of any question submitted upon this ballot, mark the oval to the left of the "Yes." To vote against it, mark the oval to the left of the word "No."

40 Do not place any other marks on the ballot and return the ballot in its entirety.



42
43 If you tear, deface or make a mistake and wrongfully mark any ballot, you must return it to the election board to receive a replacement ballot.

Shall the following be adopted?

Shall a retailers' sales tax in the amount of one-half of one percent (0.5%) continue to be levied in the City of Pittsburg, Kansas effective on January 1, 2024, with the proceeds therefrom to be used for the purpose of public safety for a time period not to exceed ten (10) years from the date such additional sales tax is first collected?

- Yes
 No