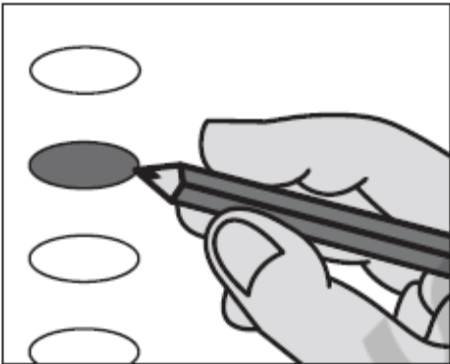


State of Kansas Official General Election Ballot  
County of Bourbon,  
November 4, 2025  
Millcreek 235

**Instructions**

To vote for a candidate, darken the oval to the left of the name of the candidate.



Optional write-in

**or write-in:**



To vote for a person whose name is not printed on the ballot, write such person's name in the blank space and darken the oval to the left.

If you tear, deface or make a mistake and wrongfully mark any ballot, you must return it to the election board and receive a new ballot or set of ballots.

**School District**

For USD 235 Position 4  
Vote for one

☐ Brian Ray Stewart

☐ Write-In

**Extension District**

For Southwind Extension District  
Vote for two or fewer

☐ Elli Milburn

☐ Gary Palmer

☐ Dennis Fry

☐ Write-In

☐ Write-In

**FSCC**

For FSCC Board of Trustees  
Vote for three or fewer

☐ Marilyn J. Hoyt, DVM, PHD

☐ Joshua Baseley

☐ Vince Loffredo

☐ Chad Cosens

☐ Destry Brown

☐ Write-In

☐ Write-In

☐ Write-In

Sample