

April 25, 2023

**BOARD MATTER H-1**

**ACTION:** **CONSIDER 2023 RESTRICTION TO THE COLLECTION OF SHED ANTLERS AND HORNS**

**AUTHORITY:** Board of Land Commissioners Rules and Regulations, Chapter 13, Section 4; W.S. § 36-2-107

**CRITERIA:**

The Board of Land Commissioners (Board) extends to the public the privilege of using legally accessible state trust lands for casual recreational day uses, unless otherwise closed by direction of the Board, on its own motion or upon request of the surface lessee. Public use is only allowed when it will not result in damage to the state trust land or the roads and improvements thereon. Organized, developed, or commercial recreational use of state trust lands is prohibited unless it occurs under the provisions of a special use lease issued under Chapter 5 of the Board's Rules and Regulations.

**BACKGROUND:**

On October 4, 2012, the Board approved a restriction to the collection of shed antlers and horns on lands under the jurisdiction of the Board. Subsequently, the Board reaffirmed the restriction as a lawful order of the Board on April 10, 2014. The Board's restriction, which was adopted to be consistent with the Wyoming Game and Fish Commission's (Commission) Rules and Regulations, Chapter 61: Collection of Shed Antlers and Horns, prohibits the collection of shed antlers and horns *"on all parcels of land under the jurisdiction of the Board of Land Commissioners west of the Continental Divide, excluding the Great Divide Basin, from January 1 through April 30 of each calendar year."*

Since then, the Commission has twice adopted revised Chapter 61 Rules, effective March 24, 2020, and January 7, 2021, respectively. As a result of those revisions, the Commission's rules prohibited the collection of shed antlers and horns *"from big game animals on public lands west of a line beginning at the Wyoming-Colorado state line at the intersection of U.S. Highway 287, northerly along said highway to U.S. Highway 30-287; northwesterly along said highway to Interstate Highway 80; westerly along said highway to the Pacific Branch of the Continental Divide; northwesterly along said divide to the southern boundary of Yellowstone National Park; westerly along said boundary to the Wyoming-Idaho state line, from 12:00 a.m. January 1 through 6:00 a.m. May 1 of each calendar year."*

At its February 4, 2021 regular meeting, pursuant to a request from the Wyoming Game and Fish Department, the Board enacted Wyoming Board of Land Commissioners Board Order 2021-1 (**Attachment 1**), which amended its existing restriction to the collection of shed antlers and horns to be consistent with the Commission's 2020 and 2021 revised Chapter 61 Rules.

**DISCUSSION:**

Due to exceptionally brutal winter weather conditions in Wyoming in 2023, the Commission will adopt Chapter 61 Emergency Rules to address shed antler collection for 2023. The Wyoming Game and Fish Department has requested that the Board restrict the collection of shed antlers and horns to be consistent with the 2023 Chapter 61 Emergency Rules that will be adopted by the Commission.

**DIRECTOR'S RECOMMENDATION:**

The Director recommends that the Board approve collection of shed antlers and horns on State Lands under the jurisdiction of the Wyoming Board of Land Commissioners for 2023 by adopting Board Order 2023-1 (**Attachment B**), consistent with W.S. § 36-2-107.

**BOARD ACTION:** \_\_\_\_\_

# WYOMING OFFICE OF STATE LANDS AND INVESTMENTS

122 West 25<sup>th</sup> Street  
Cheyenne, WY 82002  
Phone: 307-777-7331  
Fax: 307-777-3524  
slfmail@wyo.gov



MARK GORDON  
Governor

JENIFER E. SCOGGIN  
Director

## WYOMING BOARD OF LAND COMMISSIONERS

### Board Order 2023-1

April 25, 2023

Re: Restriction to the collection of shed antlers and horns on land under the jurisdiction of the Board of Land Commissioners for 2023.

Pursuant to W.S. § 36-2-107, the Wyoming Board of Land Commissioners hereby institutes a closure/restriction to the collection of shed antlers and horns from big game animals on all parcels of land under the jurisdiction of the Board of Land Commissioners for 2023 as follows:

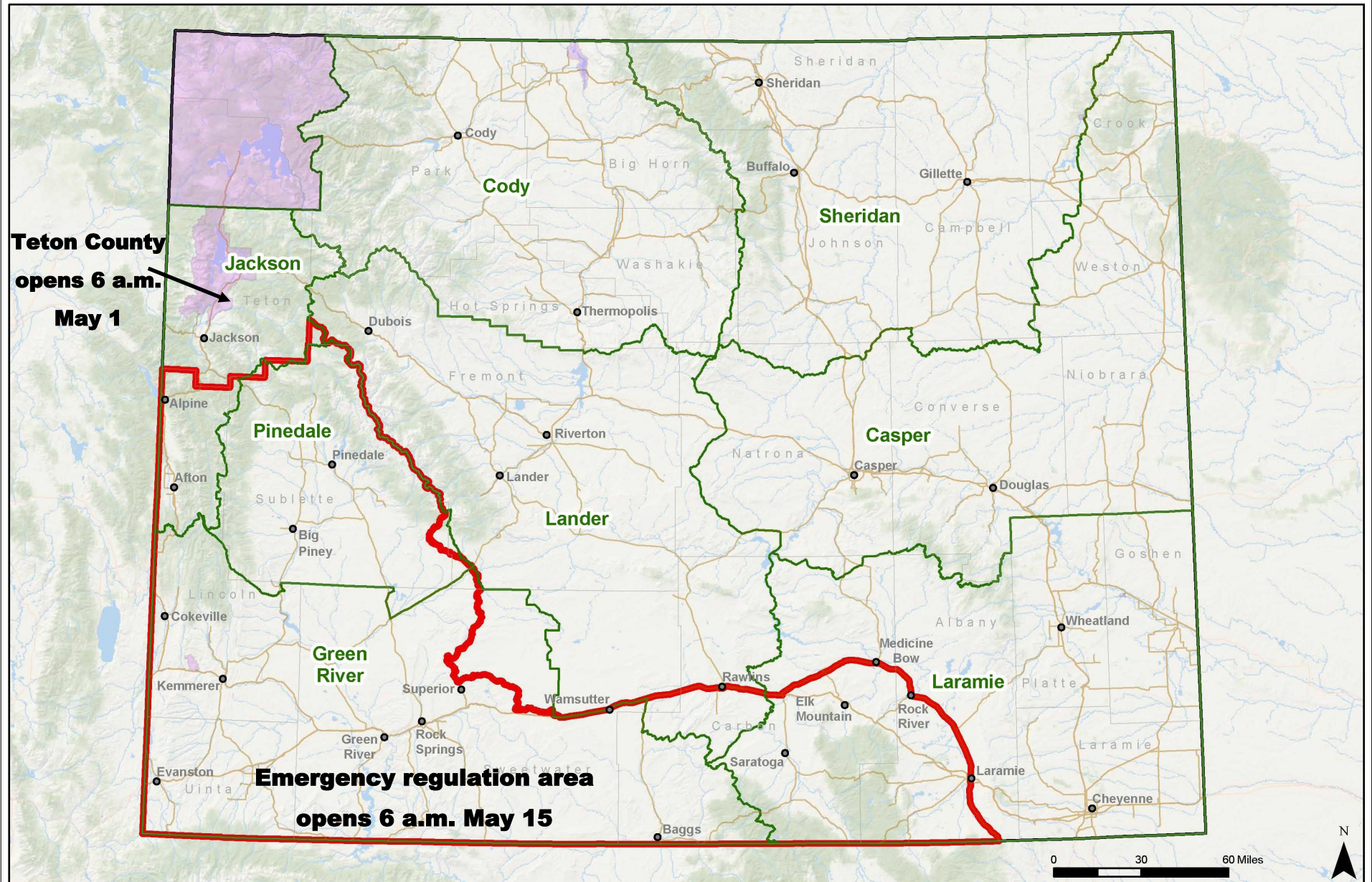
No person shall collect shed antlers or horns from big game animals on public land in Teton County from 12:00 a.m. January 1 through 6:00 a.m. May 1, 2023, and west of a line beginning at the Wyoming-Colorado state line at the intersection of U.S. Highway 287, northerly along said highway to U.S. Highway 30-287; northwesterly along said highway to Interstate Highway 80; westerly along said highway to the Pacific Branch of the Continental Divide; northwesterly along said divide to the Teton County line; southerly and then westerly along said county line to the Wyoming-Idaho state line, from 12:00 a.m. January 1 through 6:00 a.m. May 15, 2023.

This Order shall be effective immediately and shall remain in effect until May 16, 2023. Thereafter, Board of Land Commissioners' Order 2021-1, adopted on February 4, 2021, shall again be effective until rescinded or amended.

Executed this \_\_\_\_\_ day of April, 2023.

\_\_\_\_\_  
Mark Gordon, President  
Board of Land Commissioners

## 2023 Emergency Regulation Antler Hunting Area



- Cities
- State Highways
- Emergency Regulation Antler Area
- National Park Service Boundaries
- Wildlife Regions
- County Boundaries
- State Boundary