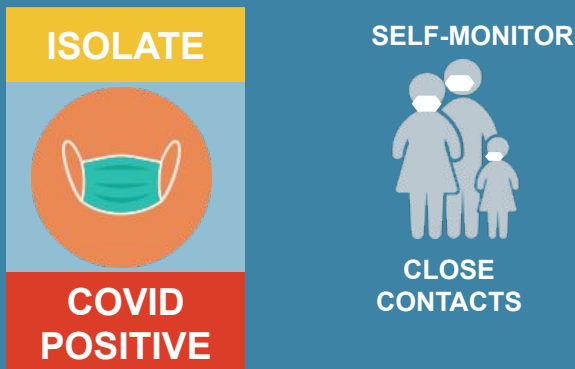


Investigations: K-12 Settings

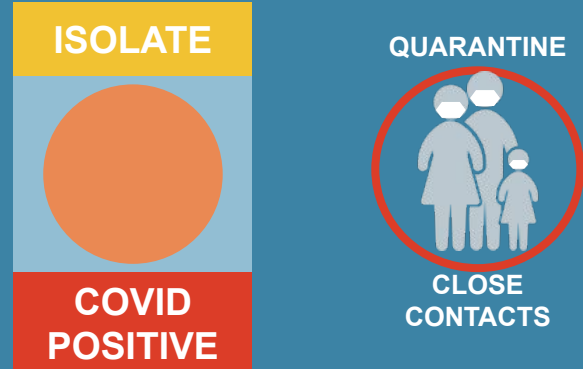
- In all scenarios below, a student or staff is considered a close contact when they are within **6 feet of the COVID-19 positive individual for 15 minutes or more.**
- Contacts asked to self-monitor should monitor themselves closely for COVID-19 symptoms during the ten days after exposure. If they develop symptoms, they should stay home and contact a healthcare provider about testing for COVID-19. If contacts who are self-monitoring develop symptoms but do not get tested, they should remain home until at least 5 days after symptom onset, fever has resolved, and symptoms have improved.
- In all scenarios below, **individuals who are 18 years and older, fully vaccinated, and boosted if eligible; or fully vaccinated and under the age of 18 without a booster; or had a positive molecular or antigen test in the past 90 days and were identified as close contacts do not need to quarantine but should wear a mask around others for 10 days.** It is recommended that they be tested 5 days after the exposure.
- K-12 students or staff who are **close contacts due to exposure to a household member and do not meet the criteria above, are required to quarantine for 5 days and wear a mask around others for an additional 5 days.**

When a masked student/staff tests positive and close contacts were wearing masks.



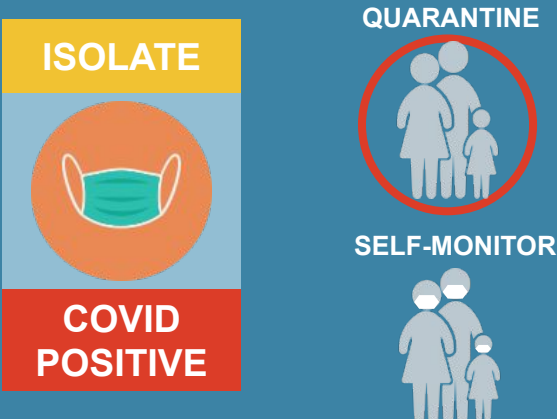
Everyone Masked

When an unmasked student/staff tests positive and close contacts were wearing masks.



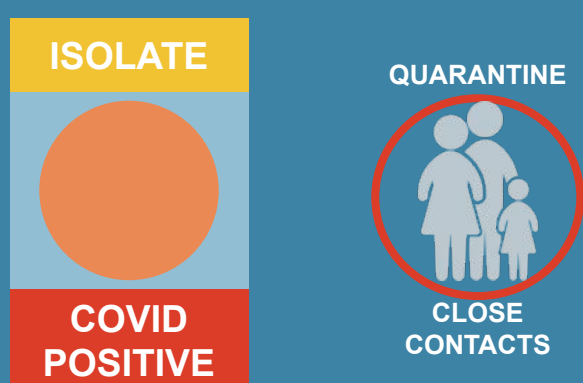
Close Contacts Masked

When an masked student/staff tests positive and SOME close contacts were wearing masks.



Some Close Contacts Masked

When an unmasked student/staff tests positive and close contacts were NOT wearing masks.



No One Masked