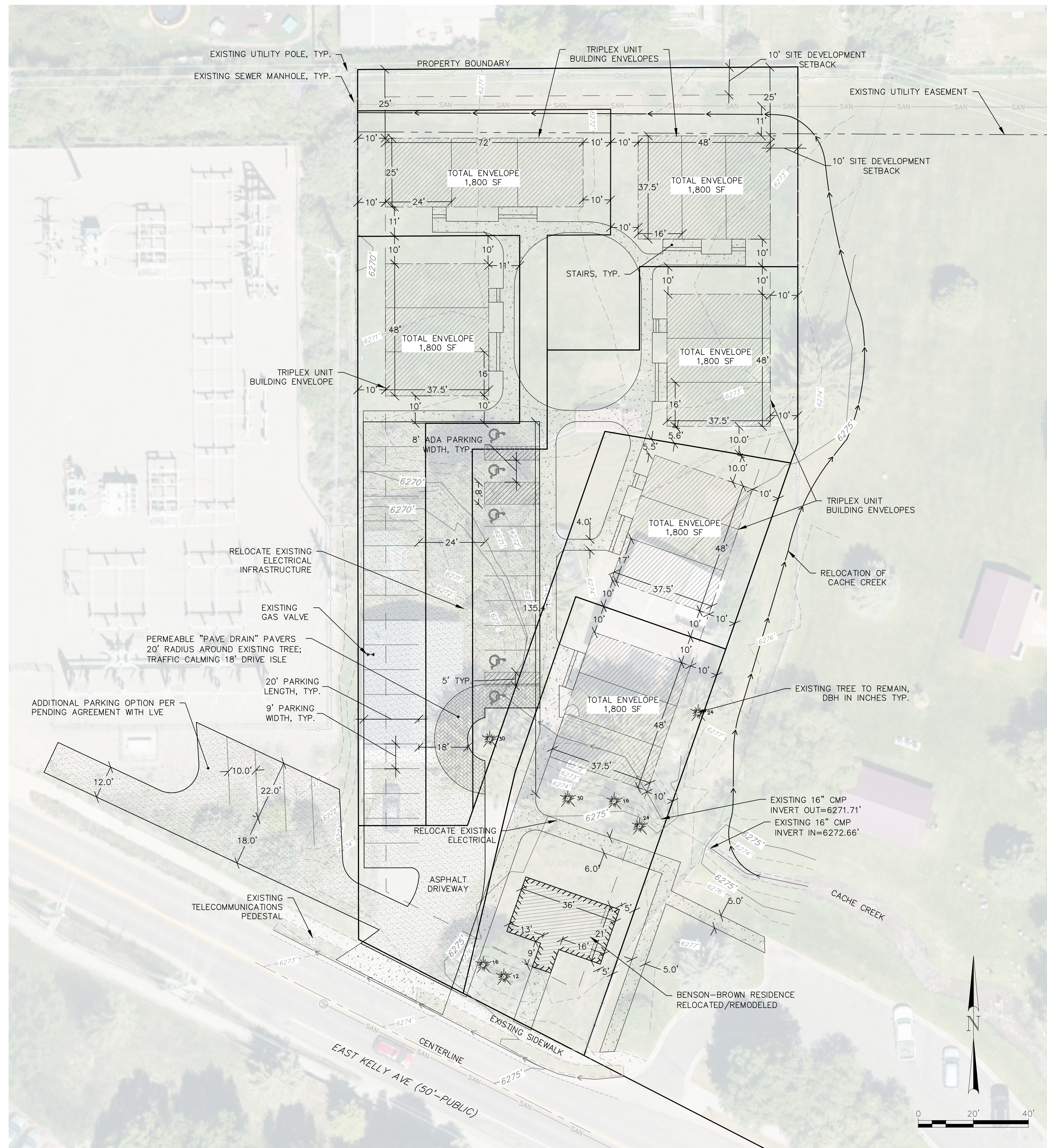


LAST SAVED: 3/22/2021 12:37 PM BY: TYLER KLOS
 F:\2020\20263_445 East Kelly Ave\CAD\20263_CONCEPT.AIA.dwg



SITE PLAN

NOT FOR CONSTRUCTION NOTE

CAUTION: THIS IS A CONCEPT SITE PLAN AND IS NOT FOR CONSTRUCTION

LEGEND

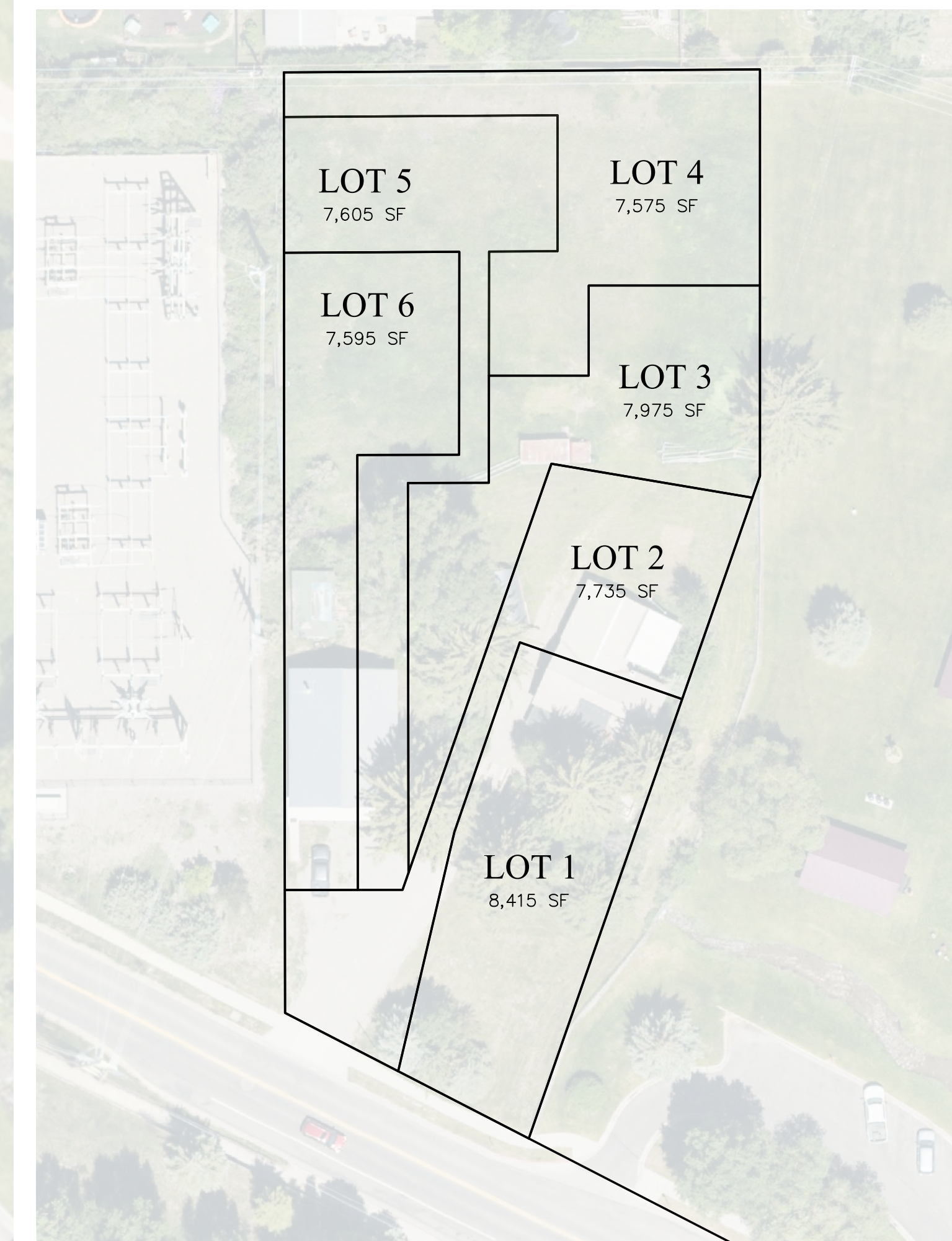
(E)-EXISTING (P)-PROPOSED

- (E) MAJOR CONTOUR
- (E) MINOR CONTOUR
- ==== (E) PROPERTY BOUNDARY
- ==== (E) BUILDING, REMODELED
- ==== (P) BUILDING ENVELOPE
- (E) WOOD FENCE
- (E) DITCH FLOWLINE
- (P) DITCH FLOWLINE
- (E) EDGE OF CONCRETE
- (P) EDGE OF CONCRETE
- (E) EDGE OF PAVEMENT
- (P) EDGE OF PAVEMENT
- (E) TOP BACK CURB
- (E) ROAD CENTERLINE
- (E) SANITARY MAIN
- (E) OVERHEAD ELECTRIC
- (P) SNOW STORAGE

PARKING NOTES

PARKING COUNT

TOTAL PARKING SPACES: 28
 ADA PARKING SPACES: 5
 VAN ACCESSIBLE ADA PARKING SPACES: 2
 ADDITIONAL PARKING SPACES ON LVE PROPERTY: 5



LOT PLAN

DRAWING SET TITLE	CONCEPT
DATE	3/15/21
	SITE PLAN REVIEW
DRAWN BY: TK	
CHECKED BY: KC	
JOB #:	20263

Y2 CONSULTANTS
 ENGINEERING, SURVEYING & PLANNING
 LANDSCAPE ARCHITECTURE, GIS
 NATURAL RESOURCE SERVICES
 Y2consultants.com
 307.733.2888

445 EAST KELLY AVE CONCEPT PLAN

TETON COUNTY

445 EAST KELLY AVE
 JACKSON, WY

SITE PLAN TO ACCOMPANY
 PRE-APPLICATION
 CONFERENCE
 REQUEST

C1.1