

WYOMING GAME AND FISH DEPARTMENT

5400 Bishop Blvd. Cheyenne, WY 82006

Phone: (307) 777-4600 Fax: (307) 777-4699

wgfd.wyo.gov

GOVERNOR
MATTHEW H. MEAD

DIRECTOR
SCOTT TALBOTT

COMMISSIONERS
MARK ANSELMINI – President
DAVID RAEL – Vice President
GAY LYNN BYRD
PATRICK CRANK
KEITH CULVER
PETER J. DUBE
MIKE SCHMID

September 13, 2018

WER 13089.05
U.S. Forest Service
Scoping
Snow King Mountain Resort On-Mountain Improvements Project
Teton County

Snow King On-Mountain Improvements Project
Bridger-Teton National Forest – Jackson Ranger District
Attn: Mary Moore
P.O. Box 1689
Jackson, WY 83001

Dear Ms. Moore,

The staff of the Wyoming Game and Fish Department (Department) has reviewed the proposed Scoping for Snow King Mountain Resort On-Mountain Improvements Project located in Teton County. We offer the following comments for your consideration.

We have provided written comments regarding all aspects of development on and near Snow King Mountain Resort. These developments include but are not limited to: Construction of facilities, ski lift repairs, an Aerial Adventure Course development, Greater Snow King Trail development of hiking and bicycle trails, and several other proposals associated with Snow King Mountain Resort. These comments are contained in our attached letters dated February 6, 2013, April 30, 2014, September 26, 2014, January 9, 2015, and the most recent letter dated February 10, 2015. We believe these comments are still relevant to the current proposal and we request the issues identified in these letters be considered and incorporated into the public record and National Environmental Policy Act (NEPA) process associated with this proposal.

We have previously expressed our concerns about the importance of maintaining the integrity of big game winter and parturition ranges in the vicinity of Snow King, especially in Leeks Canyon and surrounding areas that are designated under Desired Future Condition (DFC) 10 and DFC 12 in the Bridger-Teton National Forest (BTNF) Land and Resource Management Plan (LRMP).

- DFC 10 – Simultaneous Development of Resources, Opportunities for Human Experiences, and Support for Big Game and a Variety of Wildlife Species. An area managed to allow for some resource development and roads while having no adverse and some beneficial effects on wildlife.

- DFC 12 – Backcountry Big Game Hunting, Dispersed Recreation, and Wildlife Security Areas. An area managed for high quality wildlife habitat and escape cover, big game hunting opportunities, and dispersed recreation activities.

These areas serve as important big game movement and migration routes and seasonal habitats, including during the parturition period. Recent mule deer research conducted by the Teton Science School Conservation Research Center indicates the Snow King area provides critical habitats that functionally serve as a relatively unfragmented connectivity corridor for mule deer movements from winter ranges in Game Creek and Leeks Canyon to summer ranges in the Gros Ventre Range and Teton Range.

The importance of Leeks Canyon as a crucial big game winter range cannot be understated nor should it be potentially rendered ineffective because of expanded winter recreation into or adjacent to this important wildlife habitat. Consequently, we do not support any aspect of the proposed expansion of the Snow King Mountain Resort that will entail the development of a new ski lift, snowmaking equipment, increased novice skiing opportunities, increased vehicular access on upgraded roadways from the Snow King summit to the bottom of Leeks Canyon, and new facility construction on the ridges above Leeks Canyon. Evidence of big game use in Leeks Canyon is historical and comprehensive. During annual winter big game aerial surveys over the last 25 years, a substantial number of elk and mule deer that spend the winter from Snow King/Leeks Canyon to Game Creek can be observed on the ridges and south and west exposures in Leeks Canyon. The continued use of this area is essential to the health of the mule deer, elk, and moose that use this winter range.

While much has changed in terms of the level of human development and increased hiking, biking, and skiing opportunities in the Snow King area since the late 1980s, the importance of the south and west facing slopes of the area associated with the Snow King Mountain Resort as big game winter range has not. The importance of these winter ranges, movement and migration routes, and parturition areas are crucial to the welfare of big game in the Jackson Hole area. Due to the level of existing development and habitat fragmentation associated with the ski resort, we believe it is appropriate to offer a comprehensive level of protection to wildlife winter ranges by reassessing the amount of development that should occur in the Leeks Canyon area.

The Department has invested considerable resources in the development of the existing Forest Plan, which addresses human impacts and travel within important wildlife habitats, especially in areas designated with a wildlife management emphasis, such as the area surrounding Snow King. The original intent of the Department and U.S. Forest Service effort was to ensure the integrity of such areas remains protected for wildlife for the duration of the Forest Plan. Since 2008, we have advocated for protections and restrictions associated with continued development in and near crucial wildlife habitats associated with the Snow King Mountain Resort and surrounding areas. These restrictions have included adoption of the most current big game seasonal range designations, providing secure areas for wildlife, restricting human travel to designated routes,

Mary Moore
September 13, 2018
Page 3 of 4 – WER 13089.05

and closure of crucial winter ranges and parturition areas to human presence regardless of the DFC or Forest Management Area designation. We believe the current proposal to develop the Leeks Canyon area with additional novice skiing opportunities, construction of a new ski lift and snow-making equipment, increased vehicular access, and other developments that will increase the human-presence footprint in and adjacent to this important winter range will effectively render most, if not all, of this winter range unsuitable for big game use. Furthermore, displacement of big game from Leeks Canyon would likely lead to additional wildlife-human conflicts on private property and may also result in additional wildlife-vehicle collisions on U.S. Highway 26/189/191. Generally, areas capable of supporting wintering elk away from feedgrounds are already quite limited, and should not be further compromised.

With these concerns in mind, we recommend that a thorough and comprehensive NEPA process is conducted including an analysis of cumulative impacts and identification of mitigation measures. Alternative development should be guided by BTNF LRMP Goals, Prescriptions, Standards, and Guidelines provided below:

- Adequate habitat for fish and wildlife (Goal 2.1)
- Security area standard (forest-wide)
- Habitat effectiveness standard (forest-wide)
- Big game winter range standard (forest-wide)
- DFC 10 Fisheries and wildlife prescription
- DFC 10 Big game habitat guideline
- DFC 12 Recreation prescription
- DFC 12 Fisheries and wildlife prescription
- DFC 12 Big game habitat guideline

The Department requests continued involvement and participation in the NEPA process associated with this project and strongly encourages the Forest Service to convene cooperating agency meetings to aid in the preparation of the Environmental Impact Statement (EIS), and specifically to develop alternatives for analysis in the forthcoming EIS.

Thank you for the opportunity to comment. If you have any questions or concerns, please contact Doug McWhirter, Jackson Region Wildlife Management Coordinator, at (307) 733-2323.

Sincerely,



Angi Bruce
Habitat Protection Supervisor

AB/aw/ml

Mary Moore
September 13, 2018
Page 4 of 4 – WER 13089.05

cc: U.S. Fish and Wildlife Service
Gary Fralick, Wyoming Game and Fish Department
Doug McWhirter, Wyoming Game and Fish Department
Rob Gipson, Wyoming Game and Fish Department
Chris Wichmann, Wyoming Department of Agriculture



WYOMING GAME AND FISH DEPARTMENT

5400 Bishop Blvd. Cheyenne, WY 82006

Phone: (307) 777-4600 Fax: (307) 777-4699

Web site: <http://wgfd.wyo.gov>

GOVERNOR
MATTHEW H. MEAD

DIRECTOR
SCOTT TALBOTT

COMMISSIONERS
AARON CLARK – President
MIKE HEALY – Vice President
RICHARD KLOUDA
FRED LINDZEY
T. CARRIE LITTLE
ED MIGNERY
CHARLES PRICE

February 6, 2013

WER 13089
USDA Forest Service
Bridger-Teton National Forest
Jackson Ranger District
Proposal to Install a Fiber Optic Cable to
Provide 4G Communications Services
Snow King Mountain Recreation, LLC
Teton County

Deidre Witsen
Jackson Ranger District
PO Box 1689
Jackson, WY 83001

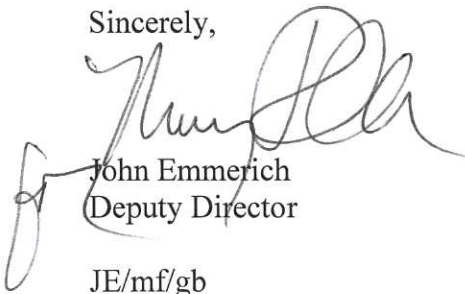
Dear Ms. Witsen:

The staff of the Wyoming Game and Fish Department (WGFD) has reviewed the proposal to authorize Snow King Mountain Recreation, LLC to install a fiber optic cable to provide 4G communications services on the Jackson Ranger District. We offer the following comments.

Given the location of the proposed surface disturbance and the short timeframe associated with disturbance, the WGFD does not foresee that implementation of this project will result in significant adverse impacts to wildlife populations or crucial wildlife habitats.

Thank you for the opportunity to comment. If you have any questions or concerns, please contact Gary Fralick, Thayne Wildlife Biologist, at (307) 883-2998.

Sincerely,



John Emmerich
Deputy Director

JE/mf/gb

Ms. Deidre Witsen
February 6, 2013
Page 2 of 2 - WER 13089

cc: USFWS
Gary Fralick – WGFD, Jackson Region
Aly Courtemanch – WGFD, Jackson Region
Tim Fuchs – WGFD, Jackson Region
Scott Smith – WGFD, Pinedale Region



WYOMING GAME AND FISH DEPARTMENT

5400 Bishop Blvd. Cheyenne, WY 82006

Phone: (307) 777-4600 Fax: (307) 777-4699

wgfd.wyo.gov

GOVERNOR
MATTHEW H. MEAD

DIRECTOR
SCOTT TALBOTT

COMMISSIONERS
RICHARD KLOUDA – President
CHARLES PRICE – Vice President
MARK ANSELM
AARON CLARK
KEITH CULVER
MIKE HEALY
T. CARRIE LITTLE

April 30, 2014

WER 13089.02
USDA Forest Service
Jackson Ranger District
Public Scoping for the Proposed
Aerial Adventure Course Development Project
Snow King Mountain Resort
Teton County

Ray Spencer
Jackson Ranger District
PO Box 1689
Jackson, WY 83001

Dear Mr. Spencer:

The staff of the Wyoming Game and Fish Department has reviewed the public scoping for the proposed Aerial Adventure Course Development project at the Snow King Mountain Resort on the Jackson Ranger District. We offer the following comments.

Terrestrial Considerations:

Staff of the Wyoming Game and Fish Department has reviewed the proposed project and categorical exclusion. The affected area is extremely small in size (approx. 1.5 acres) and is already affected by human presence and development associated with the Snow King Mountain Resort. Therefore, we believe implementation of this project will not result in adverse impacts to crucial wildlife habitats or result in a negative response to wildlife populations in this immediate area.

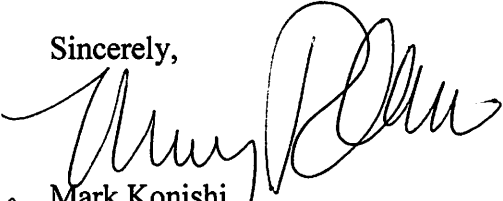
Aquatic Considerations:

We have no aquatic concerns pertaining to this proposal.


Ray Spencer
April 30, 2014
Page 2 of 2 - WER 13089.02

Thank you for the opportunity to comment. If you have any questions or concerns, please contact Gary Fralick, Jackson Region Wildlife Biologist, at 307-883-2998.

Sincerely,



Mark Konishi
Deputy Director



MK/mf/gb

cc: USFWS
Rob Gipson, WGFD – Jackson Region
Gary Fralick, WGFD – Jackson Region
Tim Fuchs, WGFD – Jackson Region



WYOMING GAME AND FISH DEPARTMENT

5400 Bishop Blvd. Cheyenne, WY 82006

Phone: (307) 777-4600 Fax: (307) 777-4699

wgfd.wyo.gov

GOVERNOR
MATTHEW H. MEAD

DIRECTOR
SCOTT TALBOTT

COMMISSIONERS
RICHARD KLOUDA – President
CHARLES PRICE – Vice President
MARK ANSELM
AARON CLARK
KEITH CULVER
MIKE HEALY
T. CARRIE LITTLE

September 26, 2014

WER 13089.03
Bridger–Teton National Forest
Jackson Ranger District
Scoping Greater Snow King Area Trail Projects
Teton County

Greater Snow King Area Trail Projects
Bridger–Teton National Forest
Jackson Ranger District
PO Box 1689
Jackson, WY 83001

Dear Ms. Merigliano:

The staff of the Wyoming Game and Fish Department has reviewed the scoping for the Greater Snow King Area Trail Projects on the Jackson Ranger District. We appreciate the Forest Service's efforts to provide a trail network near town while minimizing impacts on wildlife. We offer the following comments for your consideration.

Terrestrial Considerations:

In 2002 and 2011 we provided comments on proposals associated with existing trail maintenance and construction in and around Snow King Mountain (see attached). Our comments outlined impacts the proposed trail development would have on wildlife populations and habitats in the area. We continue to be concerned about increasing public use, the demand for access and the cumulative impacts the development will have on wildlife. Realigning Skyline trail farther into the area designated as Desired Future Condition (DFC) 9A may help to mitigate impacts to wildlife than if the trail were to remain on the ridge near the boundary of DFC 12.

Like most National Forest Lands near Jackson, the Snow King area is considered important seasonal wildlife habitat. Portions of the area are designated as big game crucial winter and parturition habitat, and the area also provides year-round habitat for many nongame species of birds and mammals. In addition, the area serves as a migration corridor for various species of wildlife during seasonal movements as animals move from winter ranges near town and summer habitats in the Gros Ventre Mountain Range. Recent mule deer research conducted by the Teton Science School Conservation Research Center indicates the Game Creek area is an important migration and staging area for radio-collared mule deer that spend the winter on adjacent low elevation sagebrush winter ranges.

We understand the importance of balancing public interests and resource issues in the Greater Snow King Area. Wyoming Game and Fish Department personnel in the Jackson Region are available to discuss specific issues associated with the trail development to determine whether or not there may be suitable mitigation measures.

Aquatic Considerations:

To minimize impacts to the aquatic resources of nearby waterways, we recommend the following:

- Accepted best management practices be implemented to ensure that all sediments and other pollutants are contained within the boundaries of the work area. Disturbed areas that are contributing sediment to surface waters as a result of project activities should be promptly re-vegetated to maintain water quality.
- Equipment should be serviced and fueled away from streams and riparian areas. Equipment staging areas should be at least 300 feet from riparian areas.
- Preventing the spread of aquatic invasive species (AIS) is a priority for the State of Wyoming, and in many cases, the intentional or unintentional spread of organisms from one body of water to another would be considered a violation of State statute and Wyoming Game and Fish Commission Regulation. To prevent the spread of AIS, the following is required:
 1. If equipment has been used in a high risk infested water [a water known to contain Dreissenid mussels (zebra/quagga mussels)], the equipment must be inspected by an authorized aquatic invasive species inspector recognized by the state of Wyoming prior to its use in any Wyoming water during all times of year.
 2. Any equipment entering the state by land from March through November (regardless of where it was last used), must be inspected by an authorized aquatic invasive species inspector prior to its use in any Wyoming water.
 3. If aquatic invasive species are found, the equipment will need to be decontaminated by an authorized aquatic invasive species decontaminator.
 4. Any time equipment is moved from one 4th level (8-digit Hydrological Unit Code) watershed to another within Wyoming, the following guidelines are recommended:
DRAIN: Drain all water from watercraft, gear, equipment, and tanks. Leave wet compartments open to dry.
CLEAN: Clean all plants, mud, and debris from vehicle, tanks, watercraft, and equipment.
DRY: Dry everything thoroughly. In Wyoming, we recommend drying for 5 days in

Linda Merigliano
September 26, 2014
Page 3 of 3 - WER 13089.03

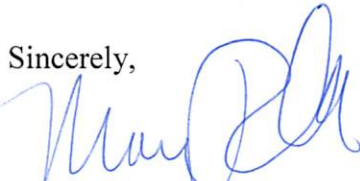
summer (June - August); 18 days in Spring (March - May) and Fall (September - November); or 3 days in Winter (December - February) when temperatures are at or below freezing.


5. Any equipment used in a Wyoming water that contains AIS, must be inspected before use in another water. Species currently found in Wyoming waters include New Zealand mudsnail, Asian clam, and curly pondweed. Information on currently affected waters can be found at:
http://wgfd.wyo.gov/web2011/Departments/Fishing/pdfs/AIS_WYWATER_MONITOR130005236.pdf.

*A list of high risk infested waters and locations in Wyoming to obtain an AIS inspection can be found at: wgfd.wyo.gov/AIS.

Thank you for the opportunity to comment. If you have any questions or concerns, please contact Gary Fralick, Thayne Wildlife Biologist, at (307) 883-2998 or Doug Brimeyer, Jackson Region Wildlife Management Coordinator, at (307) 733-2321 ext. 230 with any additional questions or concerns pertaining to terrestrial wildlife and habitat resources. Please contact Rob Gipson, Jackson Region Fisheries Supervisor, at (307) 733-2321 ext. 226 for questions pertaining to fisheries resources.

Sincerely,



 John Kennedy
Deputy Director

JK/mf/gb

cc: USFWS
Gary Fralick, WGFD, Jackson Region
Doug Brimeyer, WGFD, Jackson/Pinedale Regions
Tim Fuchs, WGFD, Jackson Region
Rob Gipson, WGFD, Jackson Region
Chris Wichmann, Wyoming Department of Agriculture, Cheyenne



WYOMING GAME AND FISH DEPARTMENT

5400 Bishop Blvd. Cheyenne, WY 82006

Phone: (307) 777-4600 Fax: (307) 777-4699

wgfd.wyo.gov

GOVERNOR
MATTHEW H. MEAD

DIRECTOR
SCOTT TALBOTT

COMMISSIONERS
RICHARD KLOUDA – President
CHARLES PRICE – Vice President
MARK ANSELM
AARON CLARK
KEITH CULVER
MIKE HEALY
T. CARRIE LITTLE

January 9, 2015

WER 13089.04
Bridger–Teton National Forest
Jackson Ranger District
Snow King Mountain Resort
Proposed Rafferty Lift Replacement and Ski Trail Construction
Teton County

Ray Spencer
Project Coordinator
Bridger–Teton National Forest
Jackson Ranger District
PO Box 1689
Jackson, WY 83001

Dear Mr. Spencer:

The staff of the Wyoming Game and Fish Department has reviewed the Snow King Mountain Resort's Proposed Rafferty Lift Replacement and Ski Trail Construction in the Jackson Ranger District. We offer the following comments for your consideration.

Terrestrial Considerations:

Snow King Mountain provides important wildlife habitat and construction activities should be implemented in a manner that minimizes impacts to big game animals that inhabit the area. Consequently, any construction activity associated with the Rafferty ski lift should adhere to the standards and guidelines associated with protection of big game winter range and parturition areas outlined in the Bridger-Teton National Forest Land Use Management Plan (Forest Plan). We believe it is essential that big game not be displaced from these habitats at critical times associated with winter and parturition ranges.

The area of Snow King Mountain is an important area inhabited by forest raptors. Therefore, we recommend that surveys for forest raptors (hawks and owls that are designated as Species of Greatest Conservation Need) should be conducted in the spring to document active nest sites. Raptor nesting surveys have identified Northern Goshawk and Cooper's Hawk nests in the forested habitats on or adjacent to the resort area. Potential impacts to forest raptors were identified in the previous project proposal that was approved for the aerial adventure course located in close proximity to the proposed project area. We suggest that the removal of the forest

Ray Spencer
January 9, 2015
Page 2 of 3 - WER 13089.04

cover be scheduled after July 15 to avoid impacts to migratory birds that nest in the area. We can provide a list of birds that are known to nest or likely to nest in conifer habitats in this area if needed. If nesting raptors are found in the project area, the removal of trees should be delayed until after August 15.

We have commented on several proposals recently that are associated with the Master Development Plan of the Snow King Mountain resort. We suggest that future proposals associated with the resort be collectively analyzed and presented for public comment under one all-encompassing document. We believe our analyses of potential impacts to wildlife and their habitats could be more comprehensively evaluated spatially and temporally if project proposals were presented in one proposal as outlined in the Master Development Plan. By analyzing each proposal under a separate Categorical Exclusion, it is not possible to assess cumulative impacts to wildlife in the resort area.

Aquatic Considerations:

To minimize impacts to the aquatic resources of nearby waterways, we recommend the following:

- Accepted best management practices be implemented to ensure that all sediments and other pollutants are contained within the boundaries of the work area. Disturbed areas that are contributing sediment to surface waters as a result of project activities should be promptly re-vegetated to maintain water quality.
- Equipment should be serviced and fueled away from streams and riparian areas. Equipment staging areas should be at least 300 feet from riparian areas.
- Preventing the spread of aquatic invasive species (AIS) is a priority for the State of Wyoming, and in many cases, the intentional or unintentional spread of organisms from one body of water to another would be considered a violation of State statute and Wyoming Game and Fish Commission Regulation. To prevent the spread of AIS, the following is required:
 1. If equipment has been used in a high risk infested water [a water known to contain Dreissenid mussels (zebra/quagga mussels)], the equipment must be inspected by an authorized aquatic invasive species inspector recognized by the state of Wyoming prior to its use in any Wyoming water during all times of year.
 2. Any equipment entering the state by land from March through November (regardless of where it was last used), must be inspected by an authorized aquatic invasive species inspector prior to its use in any Wyoming water.

Ray Spencer
January 9, 2015
Page 3 of 3 - WER 13089.04

3. If aquatic invasive species are found, the equipment will need to be decontaminated by an authorized aquatic invasive species decontaminator.
4. Any time equipment is moved from one 4th level (8-digit Hydrological Unit Code) watershed to another within Wyoming, the following guidelines are recommended:
DRAIN: Drain all water from watercraft, gear, equipment, and tanks. Leave wet compartments open to dry.
CLEAN: Clean all plants, mud, and debris from vehicle, tanks, watercraft, and equipment.
DRY: Dry everything thoroughly. In Wyoming, we recommend drying for 5 days in summer (June - August); 18 days in Spring (March - May) and Fall (September - November); or 3 days in Winter (December - February) when temperatures are at or below freezing.
5. Any equipment used in a Wyoming water that contains AIS, must be inspected before use in another water. Species currently found in Wyoming waters include New Zealand mudsnail, Asian clam, and curly pondweed. Information on currently affected waters can be found at:
http://wgfd.wyo.gov/web2011/Departments/Fishing/pdfs/AIS_WYWATER_MONITOR130005236.pdf

*A list of high risk infested waters and locations in Wyoming to obtain an AIS inspection can be found at: wgfd.wyo.gov/AIS.

Thank you for the opportunity to comment. If you have any questions or concerns, please contact Rick Huber, Staff Aquatic Biologist, at 307-777-4558, Doug Brimeyer, Wildlife Management Coordinator in Jackson at 307-733-2323, or Gary Fralick, Thayne Wildlife Biologist, at 307-883-2998.

Sincerely,



John Kennedy
Deputy Director

JK

JK/mf/ns

cc: USFWS
Chris Wichmann, Wyoming Department of Agriculture, Cheyenne
Rob Gipson, WGFD, Jackson Region
Doug Brimeyer, WGFD, Jackson Region
Gary Fralick, WGFD, Jackson Region



WYOMING GAME AND FISH DEPARTMENT

5400 Bishop Blvd. Cheyenne, WY 82006

Phone: (307) 777-4600 Fax: (307) 777-4699

wgfd.wyo.gov

GOVERNOR
MATTHEW H. MEAD

DIRECTOR
SCOTT TALBOTT

COMMISSIONERS
RICHARD KLOUDA – President
CHARLES PRICE – Vice President
MARK ANSELM
AARON CLARK
KEITH CULVER
MIKE HEALY
T. CARRIE LITTLE

February 10, 2015

WER 13089.04a
Bridger–Teton National Forest
Jackson Ranger District
Snow King Mountain Resort
Proposed Rafferty Lift Replacement and Ski Trail Construction
Teton County

Ray Spencer
Project Coordinator
Bridger–Teton National Forest
Jackson Ranger District
PO Box 1689
Jackson, WY 83001

Dear Mr. Spencer:

The staff of the Wyoming Game and Fish Department met with personnel from the US Forest Service (FS), Jackson Ranger District to review the proposed Snow King Mountain Skyline Trail location. We offer the following comments for your consideration.

As we mentioned in our previous correspondence, Snow King Mountain provides important wildlife habitat and the placement and construction of trails should be implemented in a manner that minimizes impacts to big game animals and other wildlife that inhabit the area. Snow King provides summer and winter habitat for moose, elk, mule deer, forest raptors, and migratory birds. Some of these species are listed as Species of Greatest Conservation Need in Wyoming. Trophy game species that have been recorded or are likely to occur in the area include mountain lion, wolf, and black and grizzly bear. There is also at least one documented record for Canada lynx at the upper end of the Cache Creek Trail as well. In 2002 and 2011 we provided comments on proposals associated with existing trail maintenance and construction in and around Snow King outlining our concerns about public use, the demand for access and the cumulative impacts the development. We offer the following mitigation measures for you to consider during the planning and development of the Skyline Trail.

Enforcement of a seasonal trail closure would protect both big game winter and parturition range as well as raptor/bird nest sites. We recommend seasonal closures from December 1 through July 1 be implemented in this area.

A trail connecting the Skyline Trail to the existing West Game Creek trail about mid-way along the currently proposed route could eliminate the western portion of the Skyline Trail. This would direct recreation away from a large section of un-fragmented habitat on Snow King.

The FS planning map shows two route changes that move the trail off the ridge. The map also depicts a number of planned switchbacks on the western portion of the trail (Figure 1). We suggest eliminating the switchbacks and signing areas to reduce the proliferation of user created trails in the area.

Along the eastern edge of the trail we support the proposed route change that moves recreationists away from the open, south facing slopes.

The WGFD would like to continue working with the Bridger-Teton staff to develop and review mitigation measures that provide the greatest benefit for wildlife on Snow King Mountain. We are interested in joint field trip this spring to review the proposed route. Please contact Doug Brimeyer, Wildlife Management Coordinator in Jackson at 307.733.2323, or Gary Fralick, Thayne Wildlife Biologist, at 307.883.2998 if you have any questions or comments. Thank you for the opportunity to comment.

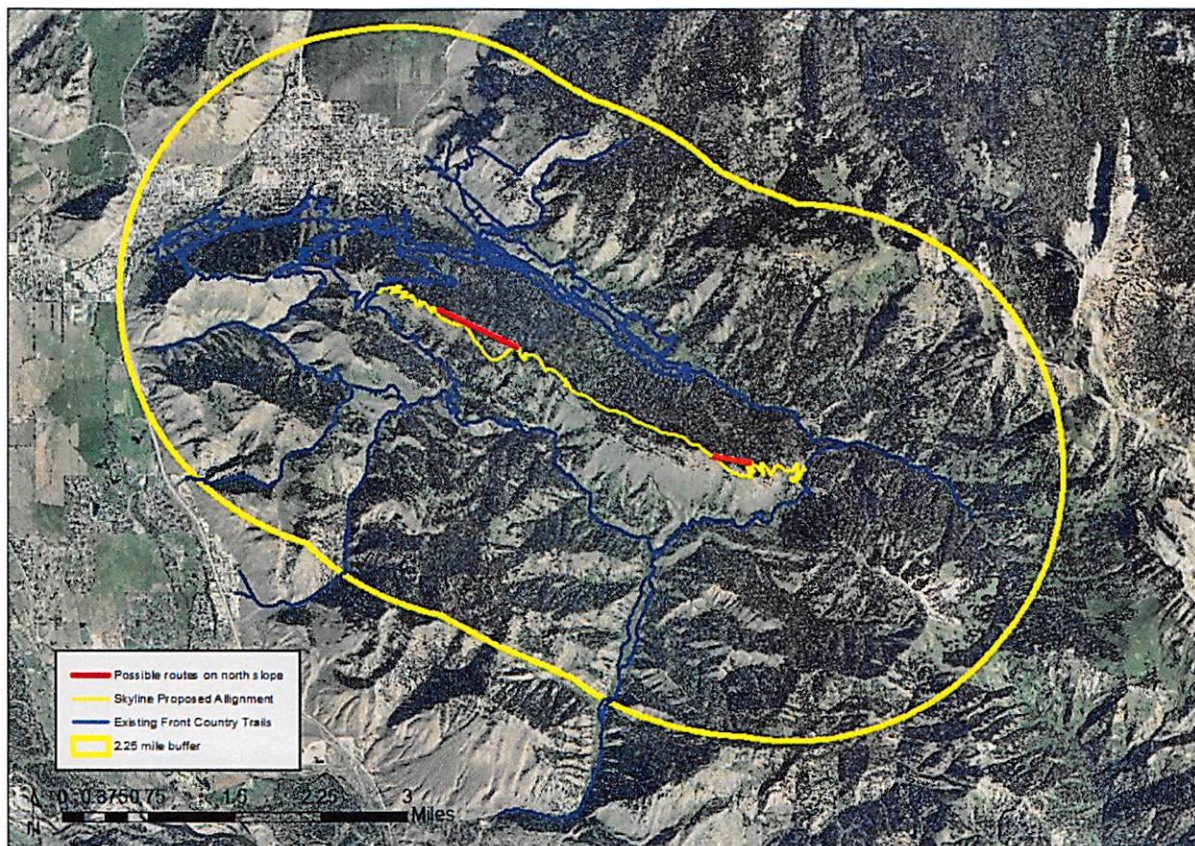
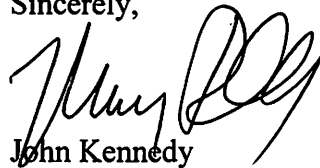


Figure 1. Planning map with proposed route changes.

Ray Spencer
February 10, 2015
Page 3 of 3 - WER 13089.04a

Thank you for the opportunity to comment. If you have any questions or concerns, please contact Doug Brimeyer, Jackson/Pinedale Wildlife Management Coordinator, at 307-733-2321.

Sincerely,



John Kennedy
Deputy Director

JK/mf/ns

cc: USFWS
Chris Wichmann, Wyoming Department of Agriculture, Cheyenne
Doug Brimeyer, WGFD, Jackson/Pinedale Region