

HEALTH & SAFETY PLAN

Indiana Area School District



TABLE OF CONTENTS

Facial Coverings (pgs. 4-6)

Prevention (pgs. 8 & 9)

Vistors/Volunteers (pg. 11)

Social Distancing (pgs. 12-14)

Cleaning, Ventilation (pg. 15)

Health Services (pgs. 16 - 19)

BACKGROUND

Beginning June 3, 2020, Indiana Area School District has received numerous communications from the Pennsylvania Department of Education (PDE) with guidance regarding the reopening of school for the 2020-21 school year. This document serves as a starting point for our staff and families to review to gain an understanding of our preparations (health and safety) for the upcoming year.

Given the dynamic nature of the COVID-19 pandemic, PDE's guidance will evolve as further research, data, and resources become available. Thus, this document is subject to change over the next several days, weeks, and months. Your patience and understanding are greatly appreciated.

Please take some time to review the document and feel free to call upon us if you have any questions and/or concerns.

Sincerely,

Mr. Michael J. Vuckovich, Superintendent of Schools

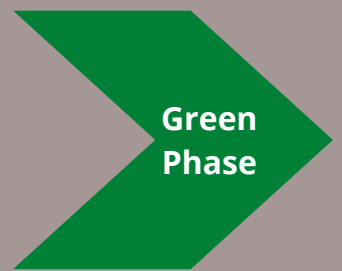
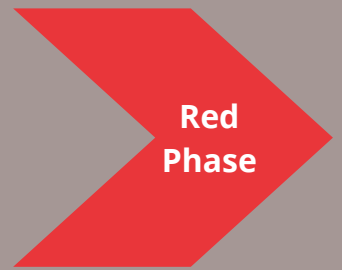
TYPES OF REOPENING

Indiana Area School District

Based on Indiana County's current designation and feedback gathered from various surveys, Indiana Area School District has elected for a total reopen for all students and staff while we are in the **Green Phase** according to Governor Wolf's vision for reopening the Commonwealth. This means that we will resume normal options for school for the 2020-21 school year. The first day of school for students is scheduled for August 31st, 2020. Those families who opted for the IDEAL (cyber) or hybrid model will start on that date as well. If Indiana County were to be moved into the **Yellow Phase**, we would revert to the model we previously communicated to you as an option where half of the students would come to school on Monday and Tuesday and the other half would come on Thursday and Friday. Wednesday would be a cyber day for all students. This model would be necessary due to the social distancing limitations imposed on us in this phase. **Red Phase** designation would require the district to close completely and resume remote learning opportunities for all students.

Throughout this document, you will see a variety of color-coded arrows (red, yellow, and green). These arrows indicate that whatever is being discussed on that page will be implemented at that particular phase (red, yellow, green). For example, prevention and education on proper hygiene techniques are necessary at each phase. Thus, on the page referencing prevention techniques, you will see all three color-coded arrows (red, yellow, green).

Governor Wolf's Reopening Phases



Be sure to look for the color-coded arrows!



IASD PANDEMIC TEAM

Indiana Area School District

According to the preliminary guidance issued by the PDE, each school district is required to identify a “pandemic coordinator” and/or “pandemic team.” Indiana Area School District took a collaborative approach in developing our plan. See below for the team composition and their roles.

- Superintendent & Pandemic Coordinator – Mr. Michael J. Vuckovich
- Academic Division Lead – Mr. Robert Heinrich
- SEL and Special Education Lead – Mr. Justin Zahorchak
- Safety Coordinator & Transportation Lead – Mr. Michael Travis
- Facilities – Mr. Greg Trout
- Administration – Mr. Jared Cronauer, Mr. Wade McElheny, Mr. Doug Johnson, Dr. Mike Minnick (also Health Services lead), Mr. Kevin Edmondson, Ms. Erin Eisenman (also Guidance Services lead), Ms. Krista Sevajian (also Child Care co-lead), Ms. Kelly Ubrani (also Child Care co-lead), & Mr. Don Springer
- School Psych Services – Dr. Angela McMasters & Ms. Shelly Wright
- IAEA Leadership – Mr. Paul McCue & Mr. Rob Stewart
- Health Services Department – Ms. Beth Mauk, Ms. Lindy Stossel, Ms. Brenda Pearce, & Ms. Tracy Pecora

FACIAL COVERINGS

Indiana Area School District



According to Governor Wolf's Order from July 3rd, all school districts are required to have staff and students wear facial coverings. The information on this page and the next was taken directly from an email the District received on July 3, 2020.

Does the Order of the Secretary of the PA Department of Health Requiring Universal Face Coverings apply to children and adults while in schools?

- *Yes, this Order applies to all individuals while in school entities, including public K-12 schools, brick and mortar and cyber charter schools, private and parochial schools, career and technical centers (CTCs), intermediate units (IUs); educational programming for students in non-educational placements such as residential settings (boarding schools), residential facilities, detention centers, and hospital settings; PA Pre-K Counts, Head Start Programs and Preschool Early Intervention programs; and Private Academic Nursery Schools and locally funded prekindergarten activities.*
- *For the safety of students, staff and families, and to avoid community spread of COVID-19, students and staff are considered to be members of the public who are congregating in indoor locations. **As such, they are required to adhere to this Order. The Order is effective immediately and applies to all children aged two and older.***

Why did the Secretary of the PA Department of Health issue this Order?

- *The Secretary issued this Order to continue to protect all in the Commonwealth from the spread of COVID-19, mindful of the need to slow the increase in the number of cases as the Commonwealth reopens and in order to avoid the resurgence that is overwhelming the health care systems and public health systems in other states who have been less successful in reopening than the Commonwealth.*

Is this Order temporary?

- *This Order remains in effect until further notice.*

FACIAL COVERINGS CONTINUED



Indiana Area School District

What type of mask complies with this Order?

- *The Order requires individuals to wear a “face covering.” “Face covering” means a covering of the nose and mouth that is secured to the head with ties, straps, or loops over the ears or is wrapped around the lower face. A “face covering” can be made of a variety of synthetic or natural fabrics, including cotton, silk, or linen, and, for the purposes of the order, can include a plastic face shield that covers the nose and mouth. “Face coverings” may be factory-made, sewn by hand, or improvised from household items, including but not limited to, scarves, bandanas, t-shirts, sweatshirts, or towels. While procedural and surgical masks intended for health care providers and first responders, such as N95 respirators, would meet these requirements, these specialized masks should be reserved for appropriate occupational and health care settings.*

Under what circumstances are students permitted to remove their face coverings (e.g. masks and face shields)?

- *Schools may allow students to remove their face coverings when students are:*
 - *Eating or drinking when spaced at least 6 feet apart;*
 - *Seated at desks or assigned work spaces at least 6 feet apart; or*
 - *Engaged in any activity at least 6 feet apart (e.g. face covering breaks, recess, etc.).*

Do students with disabilities need to wear face coverings?

- *Any student who cannot wear a mask or face shield due to a medical condition, including those with respiratory issues that impede breathing, a mental health condition, or disability, and students who would be unable to remove a mask without assistance are not required to wear face coverings. Individuals who are communicating or seeking to communicate with someone who is hearing impaired or who has another disability, where the ability to see the mouth is essential to communication, are not required to wear a mask; however, individuals should consider using another type of face covering such as a plastic face shield.*

Must an individual provide evidence that they qualify for an exception to the Order?

- *No, per the order students are not required to show documentation that an exception applies. However, the district will engage with the student and their families in order to find alternatives to wearing masks, such as the appropriate use of other materials, face shields, etc.*

HOMEMADE FACIAL COVERINGS



Indiana Area School District

We understand that some families may want to provide their child with a homemade facial covering to wear during the day. Please review the CDC guidelines listed below regarding this item.

Guidelines

- fits snugly but comfortably against the side of the face
- completely covers the nose and mouth
- is secured with ties or ear loops
- includes multiple layers of fabric
- allows for breathing without restriction
- can be laundered and machine dried without damage or change to shape

[Click here](#) to read CDC's guidance on how to WEAR facial coverings.

[Click here](#) to read CDC's guidance on how to WASH facial coverings.



PHASED REOPENING PLAN

According to the Pennsylvania Department of Education, *"all school activities must be informed by Governor Wolf's Process to Reopen Pennsylvania. The Wolf administration has categorized reopening into three phases: red, yellow, or green. These designations signal how restrictions on school, work, congregate settings, and social interactions will ease in each county."*

PHASED REOPENING PLAN

Depending on the public health conditions, there could be additional actions, orders, or guidance that is provided by PDE or DOH as a county is designated as red, yellow, or green. Some counties may not experience a straight path from a red designation, to a yellow, and then green designation. Instead, cycling back and forth between less restrictive to more restrictive designations may occur as public health indicators improve or worsen. This means that we are required to account for changing conditions and include these scenarios in our local Health and Safety Plans.

RED PHASE



The **Red Phase** has the sole purpose of minimizing the spread of COVID-19 through stay-at-home orders, strict social distancing, closures of non-life sustaining businesses, closures of schools and in-person instruction, and building safety protocols. Schools that are currently closed, remain closed. Remote learning opportunities should be the method of providing any instruction to students. Support services for students such as school meal programs and at-risk student check-ins, should be provided as feasible.

YELLOW PHASE



As counties move into the **Yellow Phase**, stay-at-home orders are lifted, but some restrictions on work and social interactions remain. Limitations around large social gatherings, remain in place. When the Governor announces that a county is changing from red to yellow, schools in yellow counties will be permitted to reopen for in-person instruction after July 1 provided the schools adhere to PDE guidance which includes the Pennsylvania Department of Health (DOH) and Centers for Disease Control and Prevention (CDC).

GREEN PHASE



The **Green Phase** eases most restrictions, but still encourages social distancing and limitations on large social gatherings (250 people maximum) to allow the economy to strategically reopen while continuing to prioritize public health. While this phase will facilitate a return to a "new normal" for schools and communities, it will be equally important to continue to monitor public health indicators and adjust strategies to mitigate community spread. Schools in green counties must continue to adhere to PDE guidance.



PREVENTION



According to the CDC, COVID-19 is mostly spread by respiratory droplets released when people talk, sing, cough, or sneeze. It is thought that the virus may spread to hands from a contaminated surface and then to the nose or mouth, causing infection. Therefore, personal prevention practices (such as handwashing & staying home when sick) and environmental cleaning and disinfection are important principles that are embedded into our plans at all phases (red, yellow, and green). Prevention and education will be a major component of our Health and Safety Plan. This includes the posting of signage in highly visible locations (restrooms, classrooms, cafe, and hallways) that promote everyday protective measures and how to stop the spread of germs. Additionally, these expectations will be embedded, where applicable, into our School Wide Positive Behavior Interventions and Supports (SWPBIS) matrices.

The Health Services Department will assist in this area by training staff on these preventative measures and practices. Furthermore, they will assist staff in educating students on these techniques by providing informational material and/or video tutorials that can be used to support our overall efforts. At the elementary level, each building will build in frequent handwashing time for students as well incorporate explicit lessons in class to promote proper hygiene practices. At the secondary level, signage and lessons (where appropriate) of proper hygiene techniques will be utilized. Please visit [our website](#) or contact your child's school nurse to learn more about some of the preventative measures you can practice at home with your child.

PREVENTION CONTINUED



We are asking parents to conduct daily symptom screening each morning before the school day, as well as in the evening (Approximately 7 PM was recommended) upon return from school. We are asking that no child with symptoms be sent to school on a bus or brought to school. [Click here to view a simple self-screener checklist we are asking parents to complete.](#) [For any questions regarding this form or how to use it, please contact your child's school nurse.](#)

Please know that all district staff will screen themselves for symptoms prior to leaving for work and will stay home if they are sick. We are all in this together.

Temperature screening **will be required upon entrance** to school for students and staff. Students will be screened by trained staff as they exit their buses. Also, each school will have a designated area for parent-drop off so all students can be screened prior to entering school. Please contact your child's principal to learn more about site specific plan on how they will conduct screenings and/or click on the links below.

Students and staff will consistently be made aware of the signs and symptoms of COVID-19. Once the screenings are completed, students will be escorted to the nurse's office immediately if feeling symptomatic. Again, we are asking families to help us in the mitigation of the spread of the virus by completing a self-assessment before and after school each day using the form provided above. We understand this can be viewed as redundant, but your help is needed in ensuring the safety of our school community. As we said before, we are all in this together.

As previously mentioned, the wearing of face coverings will be required of staff and students while in school based on the Governor's orders that the District received on Friday, July 3, 2020. Each school is required to build a plan for how they will conduct regular and frequent face covering breaks to help our young learners meet this requirement. Also, staff will be required to utilize a face shield or mask when not able to socially distance from students in the classroom. Finally, students and staff are required to wear face coverings in the hallways during class exchange.

Screening/Drop Off Procedures by School		Face Covering Breaks	
• Ben Franklin	• East Pike	• Ben Franklin	• East Pike
• Horace Mann	• Eisenhower	• Horace Mann	• Eisenhower
• Junior High	• Senior High	• Junior High	• Senior High



WHAT IF THERE IS A CONFIRMED CASE IN SCHOOL?



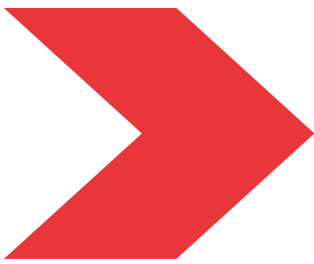
If a confirmed case of COVID-19 should occur, we will follow all of the directives and protocols established by the Department of Health. At the current time, we are awaiting additional guidance, however, below are the protocols we have created (subject to change, depending on decisions made by the Department of Health and/or Department of Education).

Protocols:

- Department of Health will be notified.
- Letter will be sent home to families that is authored by the Department of Health and issued via the school.
- Contact tracing will be done by the school/Department of Health to determine who needs to be quarantined.
- Students, staff, and any close contacts identified will be home quarantined per the Department of Health.
 - Close contact is defined as 10 consecutive minutes of contact without personal protective equipment (PPE) and without 6 feet of social distancing.
- The area/department and or the district COULD be closed per the Department of Health.

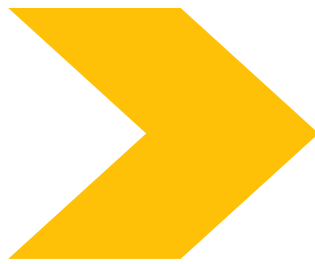
VISITORS & VOLUNTEERS

We love having our families visit our schools. Sadly, due to the pandemic, we are going to limit the number of visitors we have in our schools until further notice as a safety precaution. **This includes the cancellation of families attending their child's school to have lunch with them.** This is an extremely difficult decision, but we feel we must err on the side of caution based on the guidance issued from the Pennsylvania Department of Education and Department of Health.



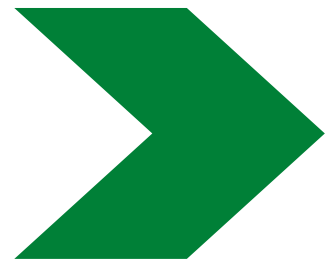
Visitors and Volunteers in the Red Phase

Students will be remote learning 100% of the time.



Visitors and Volunteers in the Yellow Phase

We will not permit visitors or volunteers to attend school functions in the Yellow Phase as an extra precaution for our students and staff. As you know, the Yellow Phase has a restriction of no more than 25 in a room/space at one time. We understand this is not ideal, and we apologize in advance.



Visitors and Volunteers in the Green Phase

We recognize how important it is to have our families involved and engaged. Limited seating for assemblies and events will occur prior to the start of school year, which complies with the Governor's capacity limit of 250 individuals. Once school is in session, there will be no in-person assemblies/parties that include the public until further notice. Required meetings and conferences will be limited to specified rooms to limit exposure and to ensure our maintenance staff can properly disinfect following each meeting. Please contact your child's principal for additional information.

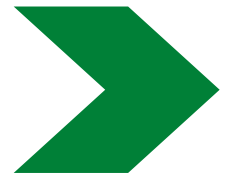
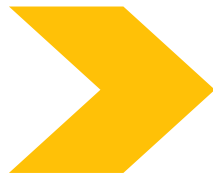
SOCIAL DISTANCING: CLASSROOMS

BUILDING PLANS

Click on your child's school to learn more about their building plan for social distancing in the classroom.

- [Ben Franklin](#)
- [East Pike](#)
- [Horace Mann](#)
- [Eisenhower](#)
- [Junior High](#)
- [Senior High](#)

Most schools in America were not built to allow for classroom/learning space occupancy with 6 feet of separation among students and staff throughout the day; the buildings at IASD are no different. Our schools were designed to promote social interaction, cooperative learning, and teamwork. Although we will do our best to encourage the practice of all of the health guidelines recommended by medical experts, such implementation can only be done to the greatest extent feasible.



Social Distancing: Classrooms

Students will be remote learning 100% of the time.

Social Distancing: Classrooms

If Indiana County were to fall back into the Yellow Phase, IASD would implement the occupancy-limitation plan most preferred by our parents based on the parent survey: the Monday and Tuesday - Thursday and Friday cohort model we previously explained. By reducing the number of students in the building under this model/phase, we would be able to ensure the suggested 6 feet of separation among students and staff. During this phase, we have no choice but to enforce all health and safety mandates from the state authorities.

Social Distancing: Classrooms

In the Green Phase, we have required teachers to declutter their classrooms and remove as much excess materials as possible to meet the Governor's social distancing orders. Students will be reminded frequently to keep their distance from each other, to wash/sanitize their hands, and to limit the sharing of items. We will teach our students about health and safety on a daily basis and follow current PDE and PA Department of Health mandates to the maximum extent possible. When social distancing of 6 feet cannot occur, students/staff will be required to wear face coverings as per the Governor's orders.

SOCIAL DISTANCING: CAFE



Social Distancing: Cafeterias

Students will be remote learning 100% of the time.

Social Distancing: Cafeterias

If Indiana County were to fall back into the Yellow Phase, IASD would implement the Monday and Tuesday - Thursday and Friday cohort model we previously explained. By reducing the number of students in the building under this model/phase, we would be able to ensure the suggested 6 feet of separation among students and staff and restrict the use of cafeterias and other congregate settings. As a result, we may have to serve meals in alternate settings such as classrooms.

Social Distancing: Cafeterias

During the Green Phase, each building will be sure not to exceed the 250 individuals in a room limit set forth by the Commonwealth. Simply stated, our school cafeterias were designed for efficiency, not for social distancing. As such, each building will meet the social distancing requirement issued by the Governor by using classrooms for students to eat. Each school will build in time for students to wash/sanitize hands prior to and after lunch. IASD will also have hand sanitizing dispensers in the cafeterias as well for staff and students' use. Where possible, schools will provide alternative dining locations to students with elevated risk and to comply with the 6 feet social distancing requirement. Please contact your child's principal if or visit the building level plans on the right hand side if you have any additional questions.

DAILY FOOD SERVICE SAFETY PLAN



1 STAFF HEALTH CHECKS

All employees will be screened daily with temperature checks and a health screening checklist prior to starting their shift.



2 BARCODE SCANNERS

Barcode scanners will be used in place of keypads to make purchases in the cafeteria in order to eliminate touching of surfaces.



3 FOOD SERVICE SAFETY

Plexiglass will be installed in certain service areas. Staff members will wear face masks or face shields when prepping, cooking, and serving food.



4 FOOD AND SERVICE ITEMS

Food items will be lidded / covered whenever possible and disposable items will be used for service.

BUILDING PLANS

Click on your child's school to learn more about their building plan for social distancing in the cafeteria.

- [Ben Franklin](#)
- [East Pike](#)
- [Eisenhower](#)
- [Horace Mann](#)
- [Jr. High](#)
- [Sr. High](#)

SOCIAL DISTANCING: HIGH TOUCH POINTS/ITEMS

Most schools in America were not built to allow for classroom/ learning space occupancy with 6 feet of separation among students and staff throughout the day; the buildings at IASD are no different. Our schools were designed to promote social interaction, cooperative learning, and teamwork. Although we will do our best to encourage the practice of all of the health guidelines recommended by medical experts, such implementation can only be done to the greatest extent feasible.



Social Distancing: High Touch Points/Items

Limiting the sharing of materials among students will occur at both the **Green** and **Yellow** Phases as a standard safety precaution. Each building will do its best to limit the number of individuals in classrooms and other learning spaces, as well as interactions between groups of students to the maximum extent possible. This is not entirely feasible at all times as our schools were not built for isolation and social distancing. Additionally, each school will do its best to stagger the use of communal spaces and hallways. This will become very difficult at the secondary level. As a result, we will continue to educate students and staff on best practices to help prevent the spread of germs and diseases.

CLEANING, DISINFECTING, SANITIZING, & VENTILATION



Cleaning, sanitizing, disinfecting, and ventilating learning spaces, surfaces, and any other areas used by students (i.e., restrooms, drinking fountains, hallways, and transportation) is a major focus of IASD's preventative strategies to create a healthy and safe environment for all.

As part of our preventative measures, IASD staff use the Victory brand sprayers to clean our classrooms on a frequent basis. This includes a thorough cleaning and spraying of each classroom every day. Additionally, our bus company has a standard operating procedure to clean the buses daily. All drivers are required to spray their bus with disinfectant spray after both AM and PM runs. This procedure has been in place for several years. The spray is to be misted throughout the bus as well. The spray is supplied by the terminal. STA, Inc. uses Neutral Disinfectant Cleaner from State Industrial Products. Please visit our website to learn more about some of the measures we are taking to keep our buildings clean, sanitized, and disinfected to the best of our ability.

All classroom unit ventilators and air handlers will have a minimum of four air filter changes per school year. The volume of airflow in the classroom unit ventilators will be increased by turning the speed of the fan to the "high" setting. We are required to introduce outside air into our buildings through our heating, ventilating, and air condition systems. Our upgraded HVAC systems are able to provide more fresh air than required due to having carbon dioxide sensors which automatically increase the amount of outside air when the building load requires an increase. The outside air settings will be adjusted above the required limits, but not to jeopardize our ability to heat and cool the spaces with the equipment's ability to operate efficiently. We will also be increasing the run time on building exhaust fans to assist during air change over.

DAILY CLEANING/DISINFECTING EFFORTS

See below for a list of the strategies and tactics we are utilizing to provide our staff and students with a healthy learning environment to the best of our ability.

- 2-hour cycle of cleaning/disinfecting during the school day for high-frequency areas: handrails, doorknobs, restrooms, light switches, and other touchpoints
- 2-hour cycle of cleaning/disinfecting during evening shift and use of electrostatic sprayers and/or thorough cleaning of handrails, doorknobs, restrooms, countertops, desks, tables, and telephones for high traffic areas
- Use of QT3 and/or BruTabs for disinfecting with electrostatic sprayers
- Disinfectant wipes provided to all classrooms
- Frequent scheduled hand washing/sanitizing for staff and students
- Adding water bottle fillers to the water fountains in each building

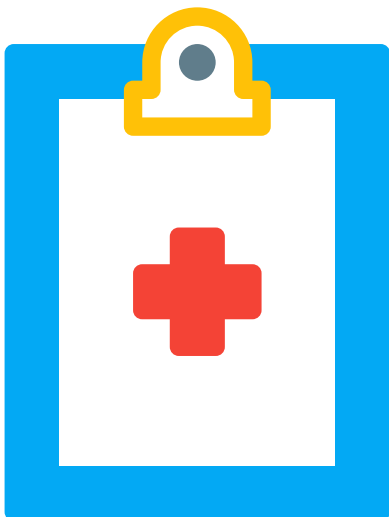
HEALTH SERVICES



The IASD Health Services Staff have worked relentlessly to prepare for the 2020-21 school year. As we prepare for a full reopening, safety for all remains a high priority. Feel free to reach out to the District's Health Services Staff if you have any questions. We are in this together! We will all need to work together to keep everyone safe. The next several pages will be dedicated to some specific procedures, processes, and protocols that the Health Services Department will implement to help keep everyone safe.

What are we doing to protect vulnerable populations?

Students who are vulnerable, have asthma, diabetes, are pregnant, or have any other health concerns should ask their health care professional about returning to school. The doctor should indicate, in writing, if the student should return to school in person, receive home bound instruction, use IDEAL instruction, wear a face covering, or any other specific instructions.



PROTOCOLS FOR ISOLATION

OVERVIEW

If a student or staff member has 2 or more of the following symptoms, they will be isolated and sent home as soon as possible.

- Temperature 100.0 degrees Fahrenheit or greater
- Cough
- Shortness of breath
- Chills
- Fatigue
- Muscle / Body aches
- Headache
- Sore throat
- Congestion, runny nose
- New loss of taste or smell
- Nausea, Vomiting, Diarrhea



HEALTH SERVICES



When To Keep Your Child Home From School (general guidelines)

There are times when you are not sure whether you should keep your child out of school.

Below are the criteria required for your child will be to return to school after an illness. If your child returns to school and has any symptoms, he/she will be isolated, and you will be notified to pick up your child.



SYMPTOMS

- A fever of 100.0 or higher. A student must be fever free for **72 hours WITHOUT medication** such as Tylenol or Motrin before returning to school.
- Diarrhea - more than 1 time in a 24 hour period.
- Vomiting - more than 1 time in a 24 hour period.
- A blistering sore or rash, especially if accompanied by a fever. Students will need to be cleared of any contagious illness by their physician before returning to school.
- Body aches, chills and sweats, dry cough, fatigue/weakness, and nasal congestion.
- Keep your child at home if he/she has **HEAVY** nasal congestion or has a persistent cough. If your child has a fever with a persistent cough, they will need to be fever free for **72 hours WITHOUT medication**, and overall symptoms must improve before they will be allowed to return to school.
- If your child has been diagnosed with strep throat, pink eye, ringworm, or impetigo, etc., he/she must be on antibiotics 24 hours before returning to school and must be fever free.
- If your child requires pain medication stronger than Tylenol or ibuprofen, he/she may not attend school.

If your student is diagnosed with COVID-19, he or she will be required to remain home from school until they are fever free for 72 hours (without medication), coughing and congestion have improved, AND it has been 10 days from the onset of the first symptoms.



Self-Screening At Home & Return to School from COVID-19

[Click here to view a simple self-screener checklist we are asking parents to complete.](#) For any questions regarding this form or how to use it, please contact your child's school nurse.

INDIANA AREA SCHOOL DISTRICT



Enhanced Health Services Guidelines

Scenario #1 - No Symptoms

- Exclude from School: Not Applicable
- Return to School After: Not Applicable

**Scenario #2 - COVID-19 Symptoms**

- Exclude from School: Yes
- Return to School After: Individual should be tested for COVID-19.
 - If test result is **NEGATIVE**, return to school 3 days after symptoms are no longer present
 - If test result is **POSITIVE**, follow return to school guidance for scenario #3

**Scenario #3 - Positive COVID-19 PCR Test WITH Symptoms**

- Exclude from School: Yes
- Return to School After:
 - 3 days with NO fever and
 - Improvement in symptoms and
 - 10 days since symptoms first appeared

**Scenario #4 - Positive COVID-19 Test WITHOUT Symptoms**

- Exclude from School: Yes
- Return to School After: 10 days after PCR test was collected
 - If symptoms develop during 10 days, follow return to school guidance for scenario #3

**Scenario #5 - Close Contact to an Individual WITH Symptoms**

- Exclude from School: Individual should be tested for COVID-19.
- Return to School After:
 - If test result is **NEGATIVE**, return to school 14 days after last exposure to the person with COVID-19 and symptoms have resolved
 - If test result is **POSITIVE**, follow return to school guidance for scenario #3

**Scenario #6 - Close Contact to an Individual WITHOUT Symptoms**

- Exclude from School: Individual should be tested for COVID-19.
- Return to School After: return to school 14 days after last exposure to the person with COVID-19
 - If symptoms develop during 14 days, follow return to school guidance for scenario #5





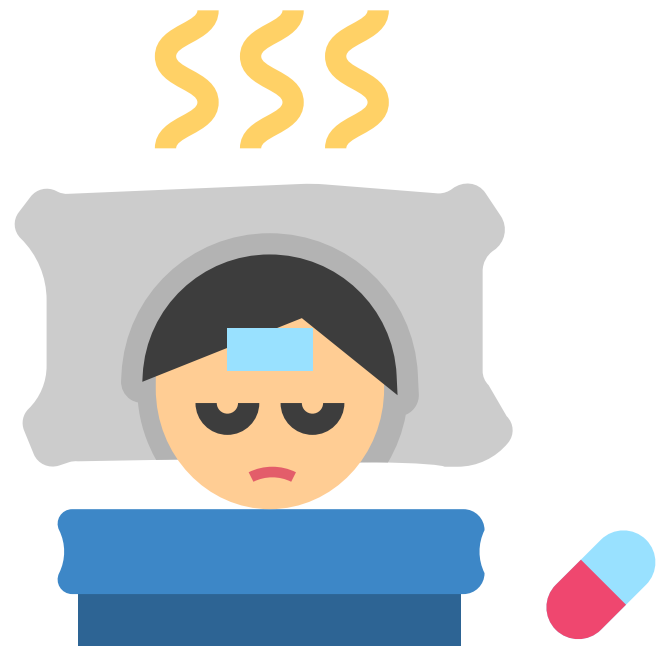
Notifications

- Staff and students or parents should notify the school if an absence is due to COVID-19.
- The school will notify the Indiana County Health Department to report any confirmed case of COVID-19 while maintaining confidentiality. The Indiana County Health Department will conduct an investigation and contact tracing as well provide appropriate guidance.
- The Indiana County Health Department will notify the school/coach if staff or students test positive, are exposed, or become ill and have to self-isolate.
- The Indiana County Health Department will **NOT** notify the general community if staff or students test positive, are exposed, or become ill and have to self-isolate.

Questions?

Please contact the IASD Health Services

- [Ben Franklin & Eisenhower](#) -
Ms. Lindy Stossel
 - Email: lstossel@iasd.cc
- [East Pike](#) - Ms. Beth Mauk
 - Email: bmauk@iasd.cc
- [Horace Mann & Senior High](#) -
Ms. Brenda Pearce
 - Email: bpearce@iasd.cc
- [Junior High](#) - Ms. Tracy Pecora
 - Email: tpecora@iasd.cc



TRANSPORTATION



Social Distancing on the Bus

Getting students to school during the pandemic will require ingenuity, a diversity of approaches, and additional resources. Transportation to and from school is one of the single greatest challenges to successful school reopening. Existing school bus capacities, availability of trained and reliable drivers, and resources to expand transportation services on short notice are extremely limited.

Physical distancing, such as spacing students one to a seat and skipping rows between students per CDC guidelines, is one of many strategies proposed to reduce transmissions on school buses. Yet these strategies could reduce ridership by 75 percent or more, necessitating multiple runs if all students must come to school every day. Such approaches might be infeasible from financial and staff resource perspectives.

As a result, some students may have modified schedules and IASD will work to allow members of the same household to be seated next to each other. ***IASD will make every effort to limit bus capacity to two students per seat. This may involve adjusted schedules for certain residence areas within the district that normally have a higher ridership and are in close proximity to schools.***

IASD and its school bus provider, STA, Inc., will REQUIRE the use of facial coverings for students (with the exceptions referenced on page 4) while traveling to and from school in alignment with the Governor's Orders.



TRANSPORTATION



Preventative Measures

STA, Inc. is taking steps to ensure safety through daily sanitization of school vehicles, increased inspections, and employee safety protocols. As part of company protocols developed by STA, Inc., ventilation will be increased on buses by opening windows when possible.

Additionally, bus loading and unloading procedures, including back to front boarding, front to back unloading, and family members seated together, will be utilized to reduce contact between students. Based on the survey IASD issued in May, nearly 60% of respondents indicated that they will use District transportation. Based upon initial survey information from district families, the percentage of students utilizing bus service will also aid in reducing actual ridership.



Questions?

**Please contact IASD
Transportation & Safety
Director - Mr. Mike Travis
Email: mtravis@iasd.cc**

MUSIC CLASSES & CHORALE

Preventative Measures



There is documented evidence of substantial spreading of COVID-19 during musical events caused by the possibility of droplet and fomite (objects or materials likely to carry infections) transmission. **Preventive strategies include modifying, limiting, or eliminating activities within the music program on a case-by-case basis.** Most students will be assigned their own instruments or will have their own individual mouthpieces. Students rarely touch another student's instrument unless they are assisting with tuning or other problems during rehearsal. The practice of sharing wind or brass instruments is going to be extremely limited if not eliminated for the coming year. Even with the switching of mouthpieces, we believe this will decrease the likelihood of spreading infectious diseases.

Additionally, the music instructors will wipe down instruments and bows that are reassigned for the fall with recommended disinfecting wipes. Our Music staff will inspect and teach students how to care for and maintain healthy instruments. This is especially true whenever we know a student has been ill. **Please click on your child's school to see what specific preventative measures are being utilized to mitigate the spread.**

We will require students to wear facial coverings during chorale classes. Indoor rehearsals will be discouraged and staff will be asked to consider moving music and band-related courses outside or to large practice areas when feasible. It is recommended that music and band classes be organized into smaller pods, minimizing the number of students for sectional or group rehearsal to provide for social distancing. Students should sanitize hands prior to handling instruments. Students are expected to sanitize hands after using instruments.



Building Plans

Click on your child's school to learn more about their building plan for preventative measures in the music classrooms.

[East Pike](#)

[Ben Franklin](#)

[Eisenhower](#)

[Horace Mann](#)

[Junior High](#)

[Senior High](#)

DRIVER'S EDUCATION



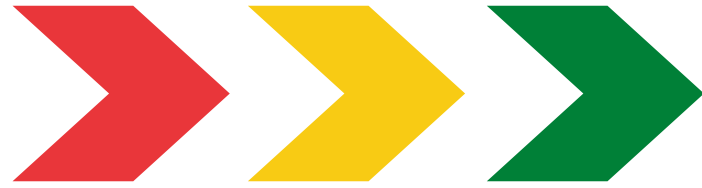
Preventative Measures

In order to provide behind-the-wheel training to students in driver's education, the following procedures must be followed:

- Allow only two students and one instructor per vehicle.
- Face coverings must be worn, as social distancing is impossible in this situation.
- Eating and drinking in the vehicle is prohibited.
- Windows will be open whenever possible.
- No stops will be made during the training that are not applicable to driver's education to reduce the amount of time in the vehicle.
- Complete hand washing with soap and water or hand sanitizer, as appropriate, before and after driving and, at the minimum, upon completion. Hand sanitizer will be placed in each vehicle.
- The steering wheel, seats, door handles, seat belt fastener, controls/dials that the driver would come in contact with, and keys, etc. will be cleaned and disinfected in between each behind-the-wheel session.



CHILD CARE COLLABORATION



Expanding Partnerships

If the District falls back into the Yellow Phase, we will not be able to have all of our students in the building at one time. As a result, we have reached out to our Early Learning Providers in the area to gather their input, as well as work with them to provide your child with **continuous care and instruction** that is aligned with the mission and vision of IASD.

The District has implemented a great deal of resources in improving our literacy program to be aligned with the science of reading and best practices. IASD will provide technical support, if needed, to our Early Learning Providers to help them implement our curricula, which includes Heggerty and Wilson Foundations.

Additionally, IASD will provide technical support in the area of social-emotional learning. This includes the use School-Wide Positive Behavior Interventions and Supports (SWPBIS) systems approach. The illustration to the right explains our coordination efforts.

CHILD CARE COLLABORATION



Informed Learning Options - IASD

Promoting Alternative Thinking Strategies



IASD is working with area Early Learning providers to discuss our current social-emotional programming. IASD used the evidence-based program titled Promoting Alternative Thinking Strategies (PATHS). Our team is supporting our local providers by providing technical assistance in this curriculum so the topics, methods, and strategies can be reinforced on the days child care services are needed.

SWPBIS

IASD uses systems approach for establishing the social culture and behavioral supports needed for a school to be an effective learning environment for all students. Our team is supporting our local providers by providing technical assistance in this area to help reinforce what we are doing while students are in school. This includes: defining and teaching positive social expectations, acknowledging positive behavior, on-going collection and use of data for decision-making and providing a continuum of intensive, individual intervention supports to name a few.



Literacy Support



The IASD reading program is designed to provide all students with an engaging learning environment rooted in the scientific evidence of reading best practices, which includes high-quality instruction in oral language, phonemic awareness, phonics, fluency, vocabulary and reading comprehension. The vision is to demonstrate fidelity to the core reading program by providing scientifically-based reading instruction and expecting reading proficiency for ALL students. Our team is supporting our local providers by providing technical assistance in this area to help reinforce what we are doing while students are in school.

Indiana Area School District

2020-21 Reopening - IASD

WWW.IASD.CC

#StopTheSpread

Sources:
www.who.int
www.cdc.gov

10 things you can do to prepare for Returning back to school

Practice Hand Hygiene

often throughout the day. teach them to sing their ABCs or have them count for at least 20 seconds ensuring they was front, back, and in-between their fingers.

Update Immunizations/Physical.

Each are required to enroll for the school year. Contact your child's pediatrician for an appointment.

Practice Putting Mask On/Off.

As per the Governor's Order, your child we be required to wear a mask to school. Teach them to not touch the inside of their mask when taking it off.

Practice 6 ft of Distance

As per the Governor's Order, social distancing of 6 ft will be required in order for your child to take off their mask. Consider temporarily laying pieces of paper down for a visual.

Purchase a Thermometer

Check your child's temperature every morning and upon return from school. If 100.0 or higher, they must stay home until fever free for 72-hours.

Make/Purchase Extra Masks.

When possible, masks should only be used one time. consider making or buying multiple masks to give you proper time to wash them between use.

Change Aerosolized Medication.

Nebulizers & inhalers without a chamber cannot be administered in school. Speak with your child's pediatrician to obtain the proper equipment and to notify the school nurse.

Purchase Reusable Water Bottle

to be brought to school. The District is in the process of replacing a majority of our water fountains with bottle filling machines to help mitigate the spread of the virus.

Verify/Update Emergency Contacts.

If your child presents with COVID-like symptoms, they will be placed in an isolation room and will be need to be picked up immediately.

Stay Informed.

Educate yourself from reliable sources such as the CDC, Department of Health, and the World Health Organization.

