

JUNE 2020



INFORMED LEARNING OPTIONS FOR REOPENING

INDIANA AREA SCHOOL DISTRICT



FLEXIBILITY & COMPASSION

IASD families and students have been at the heart of our decision-making during these uncertain times of closure due to COVID-19. As a district, we have emphasized flexibility and compassion during the stressful events surrounding our nation. Our ultimate goal is to return to normal with our students in the classrooms, connecting daily with their teachers. This is a process that will occur over time, and also a process that requires us to establish procedures and protocols to ensure the safety of our students and staff. The district's plan and your options are outlined in this document.

TABLE OF CONTENTS

- MESSAGE FROM THE SUPERINTENDENT.....3
- LEARNING OPTIONS FOR YOUR CHILD.....6
- SURVEY RESULTS.....7
- AREAS OF FOCUS.....8
- GUIDING PRINCIPLES.....9
- TRADITIONAL MODEL.....10
- WHAT IF THERE IS A CONFIRMED CASE IN SCHOOL?11
- IDEAL (IASD CYBER PROGRAM).....12
- HYBRID MODEL.....15
- BEHAVIORAL HEALTH SERVICES.....16
- CHILD CARE SERVICES.....19
- NEXT STEPS AND CONTACT INFORMATION.....20

Continued on the next page

MESSAGE FROM THE SUPERINTENDENT

Dear Families:

I hope you are doing well and I want to thank you for all of your support during these turbulent times. You may have seen a variety of scenarios and different guidelines for how schools should operate this fall discussed in the media. As we learned this year, the Commonwealth could impose directives upon us. The choice to be open or closed or operate in some modified manner may not be a local decision. Given the uncertainties of the situation surrounding COVID-19 we are preparing for any of the following four potential scenarios to be presented to us by the Commonwealth:

- PA opens schools with no restrictions
- PA schools remain closed and distance learning must continue
- PA imposes strict safety restrictions and mandates health protocols which limit our capacity
- PA leaves the decision to reopen up to the local districts with safety guidelines and recommendations in place.

As a result, this document is designed to inform your family's decision making in case we are in the fourth scenario. I feel it is important to be upfront with our planning and supporting details so you can make an informed choice based on the information we have at the current time. ***Again, to be clear, we have not received information about reopening at this point and we are eagerly awaiting this information. We intentionally left out information regarding social distancing and whether or not students will be required to wear masks for the 2020-21 school year as we want to make sure we have a clear understanding of the Commonwealth's expectations and guidelines before we communicate regarding these two areas of discussion.*** We are asking for your patience with us in these aspects of planning, as we will be sure to communicate with you as soon as we are made aware of the Commonwealth's expectations.

Continued on the next page

MESSAGE FROM THE SUPERINTENDENT CONTINUED

Based on the information you provided in the parent survey, we feel it is best to offer three options for your children's learning this fall. ***Again, final determinations will be made taking into account state, federal, and CDC guidelines. Until such time, IASD is planning for a variety of options so we are best prepared to meet the needs of our students within prescribed parameters.***

We believe that family choice is critical, especially during this uncertain time. There is, however, the possibility that the Commonwealth could impose strict safety restrictions and mandate health protocols which will limit our operating capacity. The District is preparing for the case in which schools are required to implement a variety of these restrictions such as limited occupancy, social-distancing, etc. In this situation, students would be divided into two groups. The feedback you provided on the survey clearly indicated that, while none of the options for this situation are ideal, the majority of you preferred the scenario in which half the students would attend on Monday and Tuesday, while the other half attend on Thursday and Friday. Wednesdays would have all students and staff work online, from home, to allow the District to thoroughly clean the buildings before the other groups of students arrive, limiting the exposure to each group. Each group will attend school virtually on the days when the opposite group is attending live, in-house instruction. This virtual learning, based on your overwhelming input/feedback, would be very similar to the plan we are currently implementing - asynchronous, teacher-designed, and as flexible as possible.

IASD will ensure that family members attend on the same days so child care arrangements can be made. We recognize this is not an ideal solution, but we must plan for this option in case we are directed to impose social distancing practices. We are also working with our local early learning providers to provide technical assistance in the areas of literacy and social-emotional learning for our youngest learners.

Continued on the next page

MESSAGE FROM THE SUPERINTENDENT CONTINUED

In closing, we are waiting for public health guidance and/or social restrictions from the Department of Health and/or the Department of Education. As updates come in, this document will be revised and modified as necessary. We will be sure to communicate accordingly when updates become available and I apologize for all of the emails in advance. ***I appreciate all you have done to support our community during these unique times and want you to know that we will continue to do the best we can to provide you with appropriate, flexible, safe, and equitable options for your family. We cannot wait to see our families back in our schools once again.***

Respectfully yours,



Mr. Michael J. Vuckovich
Superintendent of Schools



LEARNING OPTIONS FOR YOUR CHILD

Based on the information you provided in the parent survey, we feel it is best to offer three options for your children's learning this fall. Final determinations will be made taking into account state, federal, and CDC guidelines. Until such time, IASD is planning for these three options so we are prepared to meet the needs of our students within prescribed parameters. At the end of this document is a survey we are asking each family to complete to select the learning option that is best for your family's needs, so we can plan accordingly. Your help is appreciated!



Traditional Model

This scenario will enable students to attend school Monday-Friday. Our schools will follow traditional hours unless directed by the Commonwealth of Pennsylvania or a localized emergency occurs that would prevent the normal operation of school.



IDEAL/Cyber Model

This scenario will enable students to learn online via our IDEAL model. Students will not be expected to attend school in person. All of their classes will take place remotely with constant access and support from certified teachers from the district.



Hybrid Model

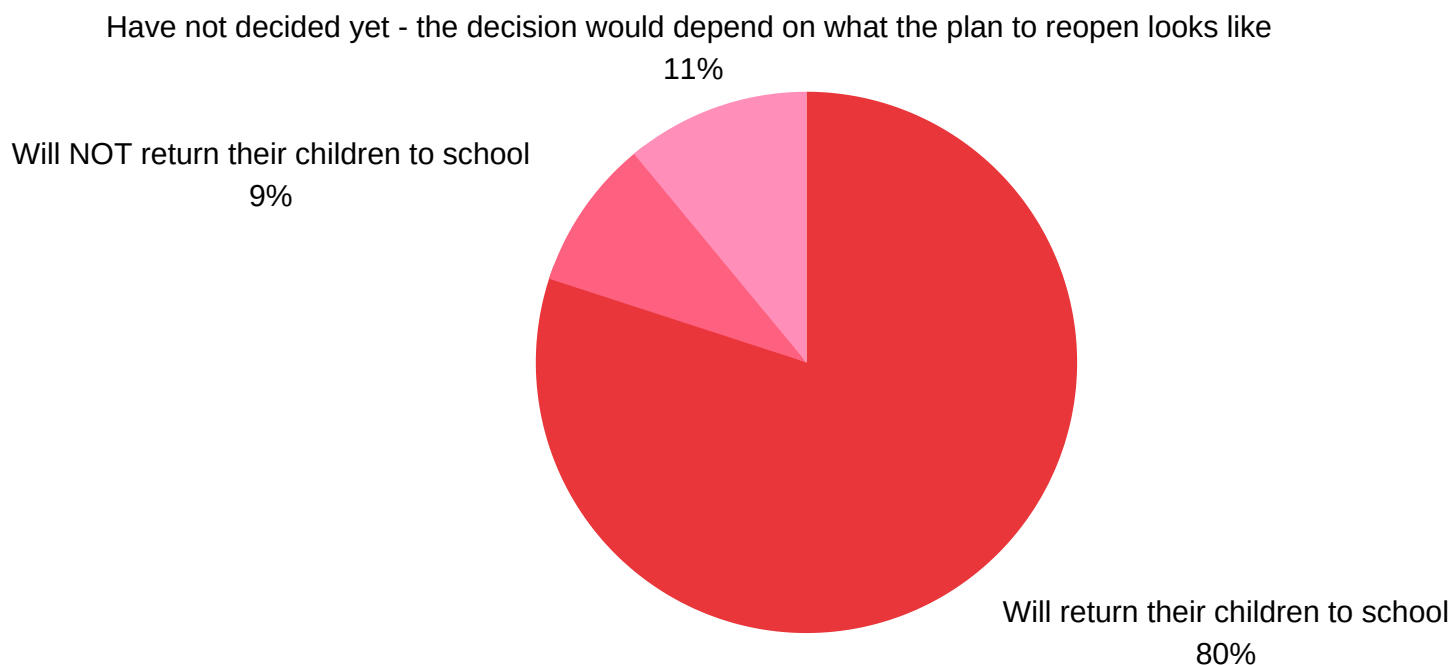
This scenario will enable students to take classes both in person at school as well as online. The **current** IDEAL model allows for students to come into our schools and get support from teachers during the day to provide that one-to-one support needed. We recognize that some families may have certain health-related issues that present some obvious concerns. As such, we will do everything in our power to provide an option that will maximize safety protocols with a balance of personal support for all children, including those with elevated health risks.

SURVEY RESULTS

Thank you to the nearly 1000 families who responded to the survey! We are very fortunate to have such an involved and supportive community.

According to the questions we asked and comments you submitted, we gained the following insights:

1. An overwhelming majority of you want the schools to reopen.
2. Most families intend to utilize the school buses for transportation.
3. Many of you have concerns about your family's health and well-being and want to know what school will look like before you decide.
4. Many of you feel that the inconsistencies of an on-again, off-again schedule present serious challenges to your family's situation.
5. Many of you are concerned about the social and emotional well-being of your children and how the school closure may be affecting that aspect of your children's health.



Thank you once again for the feedback and for participating in the survey. The comments many of you provided were insightful and informative. The data collected will assist us in designing a system that will be flexible and considerate to the needs of all students and their families.

AREAS OF FOCUS

The challenge to reopen schools responsibly is a multi-layered issue. In designing our educational options for our families, the district examined this through multiple lenses to create a system that is reflective of the needs of our community.



GUIDING PRINCIPLES

As mentioned, we are planning for several different possibilities this fall. Regardless of the scenario, we are using several guiding principles to assist in building options that will meet the needs of our community.



SAFETY

- Our ultimate guiding principle in building our reopening options is to place the safety and welfare of our staff, students, and families first and foremost

FLEXIBILITY

- Flexibility and compassion is the hallmark of our efforts. Our goal is to give our families flexible options that are considerate and compassionate to each families needs and circumstances

CONSISTENCY

- Providing consistency, structure, and multiple levels of support for our staff, students, and families is an important part of our reopening. This includes a tiered approach to meet the academic and social-emotional needs of all

COMMUNITY INPUT

- Input from our families and staff is essential to our planning efforts so that we can create a model that is reflective of their needs and responsive to their concerns

TRADITIONAL MODEL

This model will enable students to attend school Monday-Friday. Our schools will follow the traditional schedule unless otherwise directed by the Commonwealth of Pennsylvania or if a localized emergency occurs that would prevent the normal operation of school.

Under this model, we will do our very best to maintain a safe and positive school climate with heightened preventative measures being enacted to maintain a safe and proper learning environment for all. Please see the protocols on the right.

****The District will be required to adhere to all directives from the Commonwealth, Federal Government, and/or Pennsylvania Department of Education regarding health and safety protocols. IASD will communicate with our families once these expectations are made available.***

HEALTH & SAFETY PROTOCOLS

IASD

BUSING

- Daily cleaning and disinfection of equipment
- Changes in the loading/unloading procedures
- Check-in and check-out health procedures for drivers
- Additional safety training of drivers related to the pandemic



FACILITIES

- 2-hour cycle of cleaning during school day for high frequency areas: hand rails, door knobs, restrooms, light switches, and other touch points
- 2-hour cycle during evening shift and use of electrostatic sprayers and/or thorough cleaning of handrails, door knobs, restrooms, countertops, desks, tables, and telephones



CLASSROOMS

- Frequent cleaning of classrooms on a daily basis
- Use of QT3 and/or BruTabs for disinfecting w/ electrostatic sprayers
- Disinfectant wipes provided to all classrooms
- Frequent scheduled hand washing for staff and students
- Provide enough "high touch" supplies to students



HEALTH SERVICES

- Staff and students will be highly encouraged to stay home when sick
- Education to staff and students on COVID-19 symptoms and preventative strategies (hand washing techniques and proper hygiene)
- Temperature checks



WHAT IF THERE IS A CONFIRMED CASE IN SCHOOL?

If a confirmed case of COVID-19 should occur, we will follow all of the directives and protocols established by the Department of Health. **At the current time, we are awaiting additional guidance, however, below are the protocols we have created (subject to change depending on decisions made by the Department of Health and/or Department of Education).**

Protocols:

- **Department of Health will be notified**
- **Letter will be sent home to parents**
- **Contact tracing will be done by the school/Department of Health to determine who needs to be quarantined**
- **Student, staff, and any close contacts identified will be on home quarantine for 14-days**
- **The district will be closed for 2-5 days for cleaning purposes:**
 - **Close off areas used by the person who is sick**
 - **Open outside doors and windows to increase air circulation in the areas**
 - **Wait up to 24-hours or as long as possible before cleaning or disinfecting to allow respiratory droplets to settle**
 - **Clean and disinfect all areas used by the person who is sick, such as offices, bathrooms, and common areas**
 - **If it has been greater than 7-days since a positive individual was in the building, additional cleaning and disinfecting will not be needed. Continue regular cleaning/disinfecting routines**

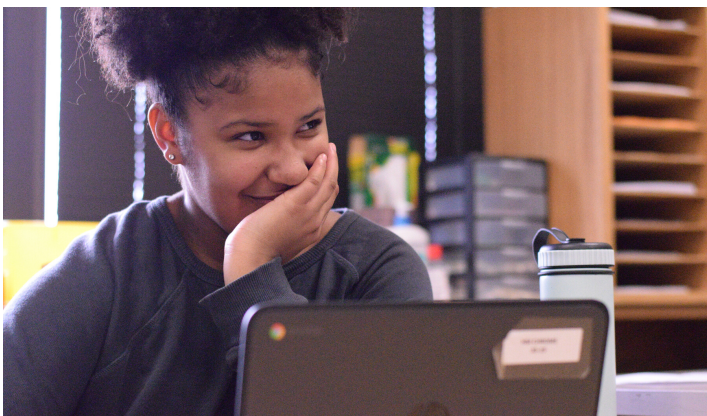


IDEAL/CYBER MODEL

INDIANA DIGITAL EDUCATION ACADEMY FOR LEARNING (IDEAL)

What is IDEAL?

IDEAL is a comprehensive cyber option for students in grades K-12 that is owned and operated by the Indiana Area School District. Our state-accredited, and established cyber program provides students with all the features of a traditional cyber program, but with the added benefits of meeting with a certified teacher for personalized instruction, blending online instruction with in-house options that cannot be replicated online (art, music, etc), and designed in alignment with IASD curriculum standards. Indiana Area School District teachers help students navigate their online learning using award-winning platforms, and provide personal contact and support along the way. IDEAL offers a personal touch and a local connection that other cyber schools cannot. Because the program is taught by our teachers and aligned to our standards, students who successfully complete their learning through IDEAL have the option to ***participate in commencement with their class at IASD, and are awarded an IASD Diploma.***



IDEAL/CYBER MODEL

Our program provides students the flexibility and convenience of a high quality virtual education, coupled with the personalized support of a traditional model. Students who are more comfortable working at home can stay completely online, while students who need support have access to our in-house IDEAL Labs where they can get the in-person help they need.

IDEAL is the perfect option for families who have travel athletes, performers, or musicians with busy schedules. The asynchronous approach (work when you can or want) provides the flexibility that busy families need. Students can complete their work regardless of where they might be, and can rest assured that the live support will be there when they get back. Transitioning between enrollment in the traditional program, and the IDEAL cyber program is a breeze, with no registration process required. IDEAL students are IASD students!

We recognize that students and families may change their minds on which option they select. As a result, students can seamlessly move from one model and back again as needed for the 2020-21 school year.



EDGENUITY AWARD-WINNING PLATFORM

The IDEAL platform uses the Edgenuity software which offers a comprehensive suite of award-winning K-12 digital curriculum.

Combining the software with IASD-certified staff is a perfect match designed to provide the support, flexibility, and high expectations that our families deserve because we are vested in your child's growth and success.

- EdTech Digest, Digital Courseware Solution 2020 Winner
- EdTech Digest, Personalized Learning Solution 2020 Winner
- EdTech Digest, Content Provider Solution 2020 Finalist
- EdTech Digest, Language Arts Solution 2020 Finalist
- EdTech Digest, Math Solution 2020 Finalist
- EdTech Digest, Science Solution 2020 Finalist
- <https://www.edgenuity.com/about-edgenuity/awards/>



JUNE 2020

IDEAL

VERSUS

OTHER CYBER SCHOOLS

OUR STUDENTS. OUR SCHOOL. OUR COMMUNITY.

| IDEAL | Other Cybers |
|--|--|
| Offers online, distance learning and provides students with devices and internet access ✓ | Offers online, distance learning and provides students with devices and internet access ✓ |
| Uses a multiple award-winning distance learning platform ✓ | Uses a multiple award-winning distance learning platform ✗ |
| Offers live in-person support with a custom-designed work space with the availability to take some classes live and in-person and others online ✓ | Offers live in-person support with a custom-designed work space with the availability to take some classes live and in-person and others online ✗ |
| Diploma from one of the highest performing school districts in the Commonwealth along with a variety of support services personalized to meet your family's needs ✓ | Diploma from one of the highest performing school districts in the Commonwealth along with a variety of support services personalized to meet your family's needs ✗ |

PAGE | 14

HYBRID MODEL

This model is for those families who have specific academic priorities, health concerns, or who desire flexibility. This option is essentially a blending of the IDEAL model with the traditional model, which were previously described. Here the emphasis will be on the customization to address each student's or family's needs, concerns, or priorities. Students who feel they learn some subjects better than others online can take those classes online, while attending other classes in school. Students who have elevated health risks, but who are unable to stay home, will have the option of attending school in an environment with far fewer students, and an emphasis on recommended health protocols. Students who wish to minimize their exposure, but do not want to miss the benefits of a music or art program which cannot be replicated online, will have the ability to balance both priorities.

This hybrid option has always available to students in our district, but given the current situation, this model's benefits are even more relevant to even more students. Please note that added precautions will be enforced in certain areas to serve those populations most at risk.

BEHAVIORAL HEALTH SERVICES

The goal of Behavioral Health Services is to provide supports to students and staff with established routines and expectations, while also reassuring students of their physical and emotional safety. Additionally, the school counselors and school psychologists will be prepared and available to offer a continuum of supports to meet more intensive needs.



BEHAVIORAL HEALTH SERVICES

SCHOOL PANDEMIC RECOVERY PLAN

1

PREVENT PHYSICAL & PSYCHOLOGICAL INJURY

Promote healthy behaviors and minimize exposure to potentially traumatizing media.

2

REAFFIRM & ENSURE PHYSICAL SAFETY

Re-educate students on school procedures, routines, and procedures on physical safety actions and the rationale behind these actions.

3

EVALUATE PSYCHOLOGICAL TRAUMA

START TRAINING BASED ON EXISTING DATA - Who was at-risk before the pandemic? Who may be at risk due to loss or poverty? Who may be at increased risk for anxiety, depression or other mental health conditions?

4

PROVIDE INTERVENTIONS & RESPOND TO PSYCHOLOGICAL NEEDS

- Reestablish social supports
- Provide psychological education
- Provide psychological interventions

5

EXAMINE THE EFFECTIVENESS OF THE MENTAL HEALTH RESPONSE

Document actions and reflections to improve future crisis response and intervention

BEHAVIORAL HEALTH CONTINUED

Our Tier 1 Behavioral Health Plan has multiple supports embedded into the school day to support our students to the best of our ability. We will include the following activities, programs, initiatives, and supports for all students:

- School-Wide Positive Behavior Interventions and Supports (SWPBIS)
- Social-Emotional Learning Instruction & Support
- Psychological First Aid for Staff and Students
 - Listen, Protect, Connect – Model & Teach
 - Common emotional, behavioral, and cognitive reactions
- Trauma Resilient School and Classroom Practices
 - Maintain normal routines as much as possible
 - Ensure safety
 - Consistent response to behavioral responses
- Mental health and wellness activities and lessons to build students' coping toolboxes

TIER 1 BEHAVIORAL HEALTH TASKS

INDIANA AREA SCHOOL DISTRICT



BEFORE REOPENING

Staff trainings: suicide prevention & awareness, trauma resilient schools, and behavioral health awareness

Review and revise SWPBIS program – matrices, lessons, & acknowledgements

Prepare for students' mental and behavioral health needs



UPON REOPENING

Reteach behavioral expectations and classroom routines; acknowledge and praise

Teach SEL lessons (as currently established in the MTSS framework)

Monitor students' behavioral and emotional needs

Promote mental health wellness

Conduct universal screening

BEHAVIORAL HEALTH CONTINUED

Our school counseling department as well as school psychologists will have a large role in our reopening plan to provide students with the support they need so they can be healthy and thrive academically. See below for some of the specific activities, services that will be provided by these two groups.

- **School Counselors**

- Classroom guidance, individual counseling, group counseling, referrals, student support team referrals, community referrals.
- Provide classroom lessons on school expectations and structure to help students re-adjust to a full school schedule.
- Facilitate classroom guidance on social distance practices in school, community, home, etc.
- Assist teachers with behavioral concerns and counsel students to determine root causes.

- **School Psychologists**

- Consult with teachers and administration on school-wide behavioral and mental health needs of students.
- Consult with teachers, school counselors, parents, and school social workers to deliver services to students who display outward signs of trauma.
- Refer students to outside agencies as needed.
- Provide age-appropriate information/counseling and support to students related to student anxiety, fears, and loss.



CHILD CARE SERVICES

If the District is required to implement social distancing, we will not be able to have all of our students in the building at one time. As a result, we have reached out to our Early Learning providers in the area to gather their input as well as work with them to provide your child with continuous care and instruction that is aligned with the mission and vision of IASD.

The District has implemented a great deal of resources in improving our literacy program to be aligned with the science of reading and best practices. IASD will provide technical support, if needed, to our Early Learning providers to help them implement our curricula which includes Heggerty and Wilson FUNdations.

Additionally, IASD will provide technical support in the area of social-emotional learning. This includes the use School-Wide Positive Behavior Interventions and Supports (SWPBIS) systems approach. The illustration to the right explains our coordination efforts.



CHILD CARE COLLABORATION

Informed Learning Options - IASD

Promoting Alternative Thinking Strategies



IASD is working with area Early Learning providers to discuss our current social-emotional programming. IASD used the evidence-based program titled Promoting Alternative Thinking Strategies (PATHS). Our team is supporting our local providers by providing technical assistance in this curriculum so the topics, methods, and strategies can be reinforced on the days child care services are needed.

SWPBIS

IASD uses systems approach for establishing the social culture and behavioral supports needed for a school to be an effective learning environment for all students. Our team is supporting our local providers by providing technical assistance in this area to help reinforce what we are doing while students are in school. This includes: defining and teaching positive social expectations, acknowledging positive behavior, on-going collection and use of data for decision-making and providing a continuum of intensive, individual intervention supports to name a few.



Literacy Support



The IASD reading program is designed to provide all students with an engaging learning environment rooted in the scientific evidence of reading best practices, which includes high-quality instruction in oral language, phonemic awareness, phonics, fluency, vocabulary and reading comprehension. The vision is to demonstrate fidelity to the core reading program by providing scientifically-based reading instruction and expecting reading proficiency for ALL students. Our team is supporting our local providers by providing technical assistance in this area to help reinforce what we are doing while students are in school.

Indiana Area School District

2020-21 Reopening - IASD

WWW.IASD.CC

WE NEED YOUR HELP

We know that this is a lot of information. We also understand that this situation is constantly changing. ***You and your family might need time to consider these options. You might want to wait to see how the COVID numbers respond to the state reopening, or want to see if the state releases more information. Please take your time and consider all your options.*** Reach out to us with questions or concerns you may have. When you are ready, we are asking that you take a few minutes and complete the survey(s) that will provide us with the information we need to be ready to accommodate your children this fall.

Please complete one (or more, if applicable) of the following surveys to let us know which option you will be choosing for your children this fall. Each survey will give you the ability to indicate selections for multiple students for families with more than one child, however, if you are selecting different options for different children in your family (ex: one child will be enrolling in the traditional model, but another will be in IDEAL), then we ask that you complete the survey for each option you will be selecting.

Please choose the enrollment option that is best for your student(s) by completing the appropriate survey(s) below by August 1, 2020. This will give us the time to adjust teacher schedules, bus routes, order Chromebooks, and make all the other necessary preparations to accommodate your student(s).

Contact Information

Communication Matters!

We realize there is a great deal of information contained in this document and it could easily become overwhelming. If you have questions or would like to speak to someone about this document and its contents, please contact your child's principal. We look forward to having a dialogue with you on our current planning efforts to make sure you are comfortable with the upcoming school year approaching quickly.

SENIOR HIGH SCHOOL

Mr. Wade McElheny - Principal
wmcelheny@iasd.cc

724-463-8562

Mr. Douglas Johnson - Assistant Principal
djohnson@iasd.cc

JUNIOR HIGH SCHOOL

Dr. Michael Minnick - Principal
mminnick@iasd.cc

724-463-8568

Ms. Marilyn Walther - Principal
mwalther@iasd.cc

PRIMARY SCHOOLS

Ms. Kelly Urbani - Principal - Ben Franklin Elementary
kurbani@iasd.cc

724-465-5637 (BF)

724-463-8567 (EP)

Mr. Donald Springer - Principal - East Pike Elementary
dspringer@iasd.cc

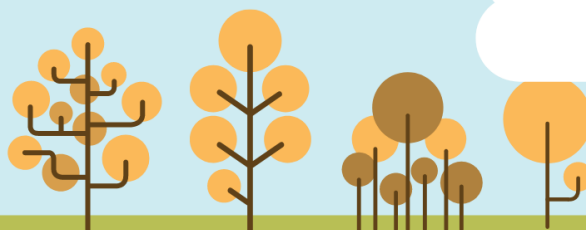
INTERMEDIATE SCHOOLS

Ms. Erin Eisenman - Principal - Eisenhower Elementary
eesienman@iasd.cc

724-463-8566 (IKE)

724-463-8560 (HM)

Ms. Krista Sevajian - Principal - Horace Mann Elementary
ksevajian@iasd.cc



www.iasd.cc

INDIANA AREA
SCHOOL DISTRICT

Enrollment Options:

[Traditional Model Survey Link](#)

[IDEAL Model Survey Link](#)

[Hybrid Option Survey Link](#)