

**Just
say no**
Indus students
finish DARE
program

B6



**Smitten
with
mittens**
Local drive keeps
hands warm for winter

A3



International Falls Journal

ifallsjournal.com

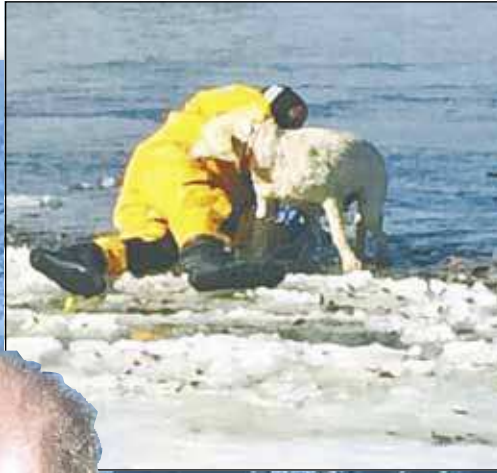


**Saturday,
March 21, 2015**

International Falls, Minnesota

www.ifallsjournal.com

\$1



Koochiching County Deputy John Kalstad, tethered to land by rope, crawls onto the shelf of ice to grab a dog, barely able to keep its head above water by digging its nails into the ice.



ONE LUCKY DOG

**Sheriff: Know where kids,
dogs are as ice deteriorates**

BY LAUREL BEAGER
Editor

There's at least one lucky dog in Ranier, thanks to the efforts of Koochiching County's sheriff and deputy. A call at about 11:45 a.m. Wednesday that a dog had fallen off the edge of ice into open water on Rainy River put the Sheriff's Office in motion. The call came from a man that had attempted to walk onto the ice with a broom to help the dog,

which appeared to be hanging on to the ice with its front paws, keeping its head just above water.

Sheriff Perryn Hedlund said Deputy John Kalstad got the call and deputies scrambled to prepare the county's air boat for launch. But it wasn't needed.

Hedlund and Kalstad headed to the site, just west of the Ranier rail

Deputy John Kalstad poses for a quick photo Wednesday after pulling this dog from Rainy River, where it was found hanging on to the edge of the ice with its paws.

Rescue to A7 >

CONTRIBUTED PHOTOS

KEDA

Board discusses local economic indicators

BY SPENSER BICKETT
Staff Writer

March is a popular time for local officials to take vacation, as the Koochiching Economic Development Authority meeting Wednesday was populated by a majority of alternate members.

KEDA members Wayne Skoe, Brian Briggs and Cynthia Jaksa served as alternate members Wednesday, and were joined by regular member Soren Olesen and KEDA Board Chair Alan Rasmussen.

The board heard an update from Jenny Herman, local Small Business Development Center consultant, on the work she's been doing in 2015.

Herman said she's had 70 client sessions since the start of the year, with 37 unique clients. The first quarter of the year is a busy time for her, she said, as it's

KEDA to A7 >

Heart of the Continent Geotourism products unveiled

JOURNAL STAFF REPORT

A landmark tourism project two years in the making will be unveiled this week.

Travelers seeking unspoiled places and culturally authentic experiences now have a valuable new resource in a comprehensive "Geotourism MapGuide" and website for the Heart of the Continent region.

The landmark project is a historically significant asset for everyone who visits or lives in the region, according to organizers.

The Geotourism MapGuide, with its Heart of the Continent Mobile App, highlights the landscapes and people of northeastern Minnesota and northwestern Ontario. It is designed to showcase to local, national and international

Tourism to A7 >

**INSIDE
TO REACH US**

OBITUARIES/A6
PHONE: (218) 285-7411

OPINION/A8
FAX: (218) 285-7206

SPORTS/B1

CLASSIFIEDS/B3
ONLINE: IFALLSJOURNAL.COM OR FOLLOW US ON FACEBOOK

OUTDOORS/B4

COMICS/B5

VOLUME 6
NUMBER 24

SPRING FLING POKER TOURNAMENT

APRIL 4, 7 p.m. Contact Table Games for details. sevenclanscasino.com | 800.815.8293



WARROAD SEVENCLANS
CASINOS

Escape Your Way