

LOCALNEWS

Ideal conditions for deer opener

BY SPENSER BICKETT
Staff Writer

Borderland deer won't need jackets and hats for the deer hunting opener today, as the conditions should be ideal.

Today marks the beginning of firearms deer hunting season in Minnesota, and area hunters should see afternoon high temperatures in the low 30s and overnight low temperatures in the mid 20s, said Kevin Huyck, meteorologist at the National Weather Service in Duluth. Over the following two weeks of the season, hunters should see temperatures continue to trend down.

"By the time we get to the middle and end of the month, we'll probably, on average, be about five to 10 degrees cooler," he said.

These temperatures will be ideal for deer hunting, Minnesota Department of Natural Resources Area Wildlife Supervisor Larry Petersen said. Cool weather

is beneficial and promotes deer movement, as the cold weather doesn't bother the deer. High winds and heavy rain or snow curtail movement, he said, but the week-end forecast doesn't call for any precipitation.

"It's not going to be an excuse for hunters, as far as the temperature being an impact," Petersen said. "Right about now is when we have the most natural deer activity for breeding season."

During October, when it came to average daily temperatures and precipitation, Borderland couldn't have been closer to normal, according to weather records.

The average temperature was 41.4 degrees, 0.3 degrees above the normal average of 41.1 degrees. This compares to the warmest October on record, when in 1963 the average temperature was 53.6 degrees.

Borderland saw 2.07 inches of precipitation during the month, 0.01 inches below the normal average of 2.08

inches. The wettest October on record was 1909, which saw 5.45 inches of precipitation.

Most of the precipitation in the month was concentrated during Oct. 5 and 6, as well as Oct. 14 and 15. The area saw a couple of large rain producing systems during those times, Huyck said. Having large, rainy systems move through and give way to dry periods is normal, he added.

“You get a system that comes through and produces a little bit of rain for a day or two, sometimes three if it’s real slow-moving, and then moves out and we dry out for a few days, and then we get another one,” he said. “We’ll see that pattern repeated through November as well.”

Borderland only saw 1.6 inches of snow during October, 0.6 inches below the normal average of 2.2 inches. When compared to 1917, the snowiest October on record with 10.5 inches, residents can be thankful they didn't

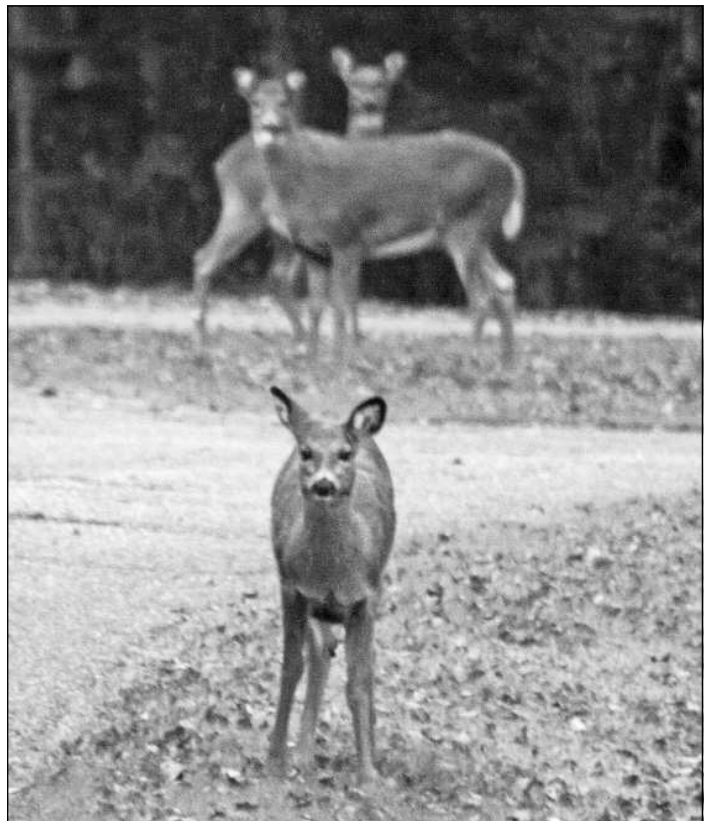
have to break out the shovels before Halloween.

An inch of the total snowfall came between Oct. 19 and 20, and melted shortly after falling. Current forecast models don't have a big snow system coming through until after Thanksgiving, Huyck said.

"There doesn't appear to be any big systems like that in the short term," he said. "We could get a little bit of snow maybe around the 10th, but doesn't appear to be very much."

Borderland also experienced some mornings with heavy fog cover, which can be caused by cooling in clear sky conditions, which quickly drops the temperature, Huyck said. This can produce a little bit of moisture in the form of fog. Fog can also roll in following a storm system, when moisture gets trapped in the lower levels of the atmosphere.

"It's almost like a sandwich, where you've got stable air that's slightly warmer a few thousand feet



STAFF PHOTO BY EMILY GEDDE

Three deer stick close together along County Road 24 just before sunset Wednesday evening. Today's firearms deer hunting season opener in Minnesota should see ideal conditions and temperatures for deer hunting.

above the surface,” he said. “Then you have this layer that’s trapped underneath of it that can’t mix out, so you

get this low-level moisture that gets trapped, so day after day you see fog as the temperatures drop.”

Operation Christmas Child gift drive gears up for holidays

BY SPENSER BICKETT
Staff Writer

Thanks to a local radio station, International Falls residents will be able to support a worldwide holiday gift drive.

KBHW Psalm FM is working as a drop-off center for Operation Christmas Child, a gift drive project from Samaritan's Purse, an international Christian relief and evangelism organization.

The gifts Operation Christmas Child provides are shoeboxes filled with toys, school supplies, and hygiene items. They are then wrapped and shipped around the world by truck, train, boat, bike, and even elephant to children in need.

The station's hope is for 500 shoebox donations, Kimberly Nyborg said, though tough economic times can affect people's giving habits.

"Sometimes when it's difficult, people rise to the occasion," she said. "It's harder when it's not a localized project, as people would rather give locally than to something that's going across the world."

Those interested in giving can drop off a gift-filled shoebox between Nov. 18-25 at Psalm FM radio station, 4090 Highway 11 in International Falls. The station will be open Nov.

18 through Nov. 22 from 7 a.m.-5:30 p.m., Nov. 23 from 7-10 a.m., Nov. 24 from noon-3 p.m., and Nov. 25 from 6-8 a.m.

Samaritan's Purse offers suggestions for items to give, such as dolls, toy trucks, stuffed animals, jump ropes, and balls. Accessories like T-shirts, socks, hats, hair clips, watches, and toy jewelry are also welcome. Items like liquids, lotions, choco-

late or food, medications or vitamins, used or damaged items, and war-related items like toy guns, knives, or military figures should not be included.

Because of the great need in third world countries, Nyborg said simply donating a shoebox with gifts can have a huge impact.

"You can bless a child who has nothing with a little something, with a little joy," she said.

Samaritan's Purse started Operation Christmas Child in 1993, and has since collected and delivered more than 100 million gifts to children in more than 100 countries.

Donators can track their shoe box and locate what country it's being delivered to by using a special tracking technology. You can register your shoebox at www.samaritanpurse.org/occ.



Spend **Less Time**
Finding the **Perfect Candidate**
with the job posting that delivers it all on
bigfishjobs.net

Hire Better, Faster, and for Less on
bigfishjobs.net

- ▶ Reach qualified job seekers on our site—and across thousands of additional job sites on TheJobNetwork™
- ▶ Find passive job seekers instantly in our resume database and LinkedIn® too
- ▶ Save time with Real-Time Job Matching™ and applicant ranking



"Land a Keeper"
bigfishjobs.net

BIG FISH JOBS

Call us today at (218) 285-7411 and ask for **Total Talent Reach™**



A Member of
the jobnetwork

WESTERN

PLOW

LIKE YOU MEAN IT

WESTERN® CONTRACTOR GRADE®
 Snowplows define toughness, performance and reliability. Rugged straight-blades, heavy duty V-plows and the versatile expandable-wing WIDE-OUT. They're all built WESTERN-TOUGH.

PRO PLUS

MVP

WIDE-OUT

PUSH THE LIMITS

westernplows.com

Waschke
FAMILY DRIVEN

2300 Highway 53 Int'l Falls, MN 56649 • 218-283-3471
 Showroom Hours: Mon.- Fri. 8-6 • Sat. 8-1
 Parts & Service Hours: Mon.- Fri. 8-5
www.waschkegm.com

Get Ready For
SNOW
 Service your plow before it gets here!
\$59⁹⁵
 Includes drain & refill with 2 quarts approved fluid, check hoses and harnesses.
 Expires 12-31-13

WINTER
Check-Up

- Inspect All Lights
- Replace Engine Oil & Filter
- Rotate & Balance Tires
- Clean Mud & Snow From Rims
- Check All Fluid Levels
- Lubricate Chassis
- Inspect Engine Drive Belts
- Check Exhaust System
- Check Wiper Blades
- Brake Inspection (clean & adjust)
- Check Battery Terminals & Test Battery
- Inspect Fuel & Air Filter

\$69⁹⁵
 \$10.00 mail in rebate good through 11/30/13.
 Good through 12/31/2013.
 Not valid with any other offers.
 Does not include diesel or synthetic oil.