



### Cedaredge **\$265,000**

Like new 2024 manufactured home features 3-beds, 2-baths, & 1,140 sq. ft. of living space. Purchase the home furnished or not; it is currently staged with beautiful furniture and decor, which all may be purchased separately. Appliances included. Covered front deck area and a large concrete slab for parking. #833049



### Cedaredge **\$990,000**

Serene mountain setting surrounds this luxury 3-bed, 3-bath, 3,940 sq. ft. home situated on nearly 12 acres of fertile farmland & good irrigation. Enjoy amazing views from the expansive decks or the gazebo. Modern rustic charm is enhanced by the knotty pine tongue & groove. Includes 2 smaller homes. #828087



### Austin **\$2,750,000**

This working ranch on Tongue Creek reflects a family's lifetime dream. Two homes on the property, both 3-bed, 2-bath. 80 irrigated acres in hay, 70 acres creek-bottom pasture & an overall total of 200 acres. Borders BLM land with 3-stable equestrian facilities, plenty of barns, pens, a large workshop, & hay barn. #825563



### Cedaredge **\$59,000**

This 0.318-acre lot in the desirable Deer Creek Village Golf Course community offers Grand Mesa views, lasting privacy, and an ideal setting for a custom home. Enjoy close access to the golf course & trails, with shops, dining, and medical services nearby. A rare combo of views & convenience in the heart of town. #830730



**Tammy Geisler**  
970-201-5691



**Marsha Bryan**  
970-234-8800



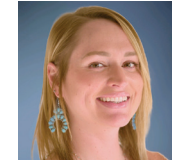
**Gregg Angelovich**  
970-250-7002



**Dan Tietz**  
970-778-0327



**Stephanie Spor**  
970-210-9132



**Leah Arsenault**  
970-778-6959



**Margie Latta**  
970-201-8728



**John Freeman**  
970-234-5296



**Ronda Slogar**  
970-778-7926



**Bert & Mary Sibley**  
970-361-0483

[rmwrealestate.com](http://rmwrealestate.com)  
or [remax.com](http://remax.com)

Each Office Independently  
Owned and Operated