



[eEdition](#)

[News](#)

[Schools](#)

[Sports](#)

[Obituaries](#)

[Opinion](#)

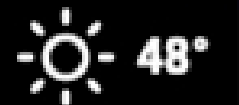
[Hometown](#)

[Special Sections](#)

[Multimedia](#)

[Classifieds](#)

[Celebrations](#)



News-Dress **now**

Local people, changing lives.



Know someone who has made Northwest Missouri or Northeast Kansas a better place?

[CLICK HERE to nominate](#)

HEY, PARENTS & GRANDPARENTS!

2019


SHOW OFF YOUR CHRISTMAS CUTIES!



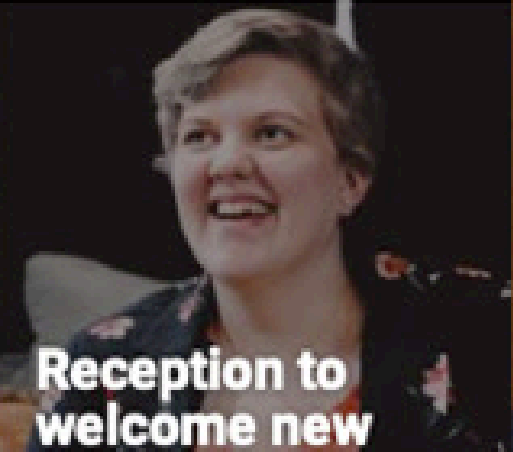
HIAWATHA WORLD

Call 785-742-2111 for more information!

FEATURED STORIES



Reception to welcome new



Commissioner resigns amidst Fire Department shakeup

NEWSLETTERS

Click **Log In** at the top of the homepage



[eEdition](#)

[News](#)

[Schools](#)

[Sports](#)

[Obituaries](#)

[Opinion](#)

[Hometown](#)

[Special Sections](#)

[Multimedia](#)

[Classifieds](#)

[Celebrations](#)



MY ACCOUNT

Sign in using your account

Username:

Email or Screen Name

Password:

Remember me | [Forgot your password?](#)

[Sign In](#)

Click **Forgot your password?**



[eEdition](#)

[News](#)

[Schools](#)

[Sports](#)

[Obituaries](#)

[Opinion](#)

[Hometown](#)

[Special Sections](#)

[Multimedia](#)

[Classifieds](#)

[Celebrations](#)



FORGOT PASSWORD

Submitting this form below will send a message to your email with a link to change your password.

Username:

jane.doe@email.com

I'm not a robot



reCAPTCHA
[Privacy](#) - [Terms](#)

[Reset Password](#)

Enter the username or email of your account then click **I'm not a robot**.



eEdition

News

Schools

Sports

Classifieds

Celebrations



FORGOT PASSWORD

Submitting this form below will send you an email with instructions on how to reset your password.

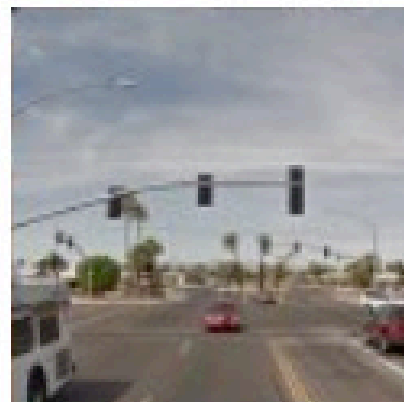
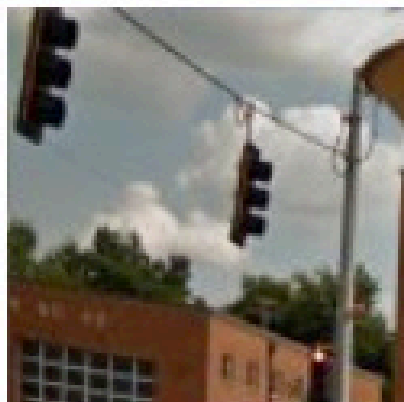
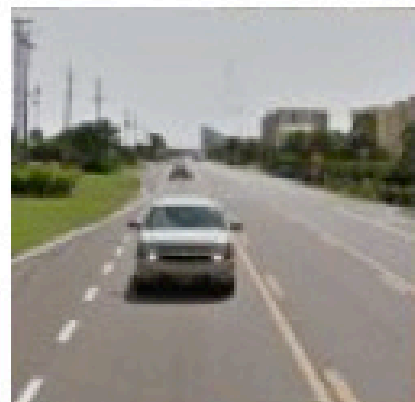
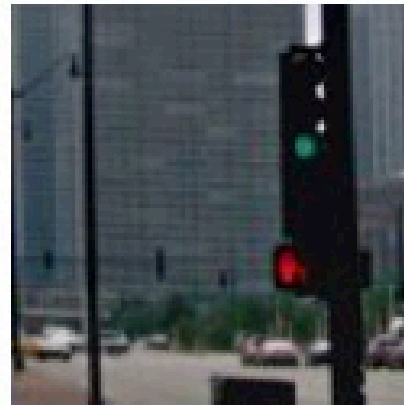
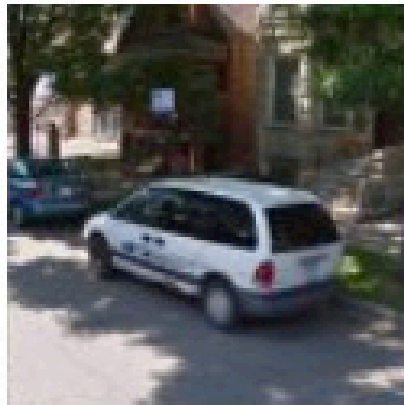
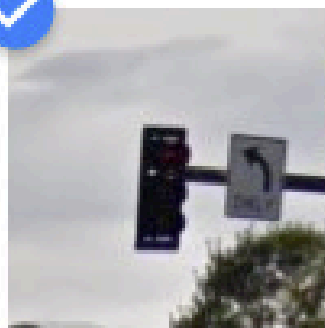
Username:

jane.doe



Reset

Select all images with
traffic lights



Note for Apple users: There may be a step that requires you to select images showing a particular object. (Example: Select all the pictures with traffic lights.)



[eEdition](#)

[News](#)

[Schools](#)

[Sports](#)

[Obituaries](#)

[Opinion](#)

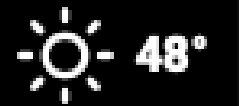
[Hometown](#)

[Special Sections](#)

[Multimedia](#)

[Classifieds](#)

[Celebrations](#)



FORGOT PASSWORD

An email message containing instructions on how to reset your password has been sent to the e-mail address listed on your account.

NPG NEWSPAPERS

[Atchison Daily Globe](#) [Courier-Tribune](#)
[Daily Star-Journal](#) [Gladstone Dispatch](#)
[Green Acres Publication](#) [Hiawatha World](#)
[Miami County Republic](#) [Read it Free](#) [Save Now](#)
[St. Joseph News-Press](#)

NPG BROADCAST

[KCJO - St. Joseph, Mo](#)
[KEYC - Yuma, Az / El Centro, Ca](#)
[KESQ - Thousand Palms, Ca](#)
[KEYT - Santa Barbara, Ca](#) [KIFI - Idaho Falls, Id](#)
[KION - Salinas, Ca](#) [KMIZ - Columbia, Mo](#)

NPG COMPANIES

[News-Press Media Group](#) [BERKS Group](#)
[News-Press Gazette Co.](#)

You will see a message that tells you to check your email.

webmaster@hiawathaworldonline.com

Inbox 10:56 AM



Account password reset instructions for [hiawathaworldonline.com](https://www.hiawathaworldonline.com)



Hello, **Jane** (jane.doe@email.com).

To change your password at www.hiawathaworldonline.com click the link below:

<https://www.hiawathaworldonline.com/users/forgot-confirm/?key=a2103022-17a7-11ea-a58f-33028ec523ac>

If clicking the link does not work, copy and paste the entire link into your browser.

Thank you!

www.hiawathaworldonline.com Staff

[Spam](#) [Not spam](#) [Forget previous vote](#)

Go to your email and find the message from webmaster@hiawathaworldonline.com.
You may need to check your spam folder. Click the link in the email as instructed.



[eEdition](#)

[News](#)

[Schools](#)

[Sports](#)

[Obituaries](#)

[Opinion](#)

[Hometown](#)

[Special Sections](#)

[Multimedia](#)

[Classifieds](#)

[Celebrations](#)



CHANGE PASSWORD

Please fill out the form below to change your password.

New Password:

.....

Re-enter Password:

.....

[Change Password](#)

Enter your password in both fields and then click **change password**.



[eEdition](#)

[News](#)

[Schools](#)

[Sports](#)

[Obituaries](#)

[Opinion](#)

[Hometown](#)

[Special Sections](#)

[Multimedia](#)

[Classifieds](#)

[Celebrations](#)



Your password has been changed. You may now sign in below.

MY ACCOUNT

Sign in using your Atchison Globe Now account

Username:

Email or Screen Name

Password:

Remember me | [Forgot your password?](#)

A green bar will appear that indicates the password has been changed. You may now log in.