

DEALER'S CHOICE

FOR THE MOUNTAIN EMPIRE

CARS - SUVs - TRUCKS - MOTORCYCLES - RVs

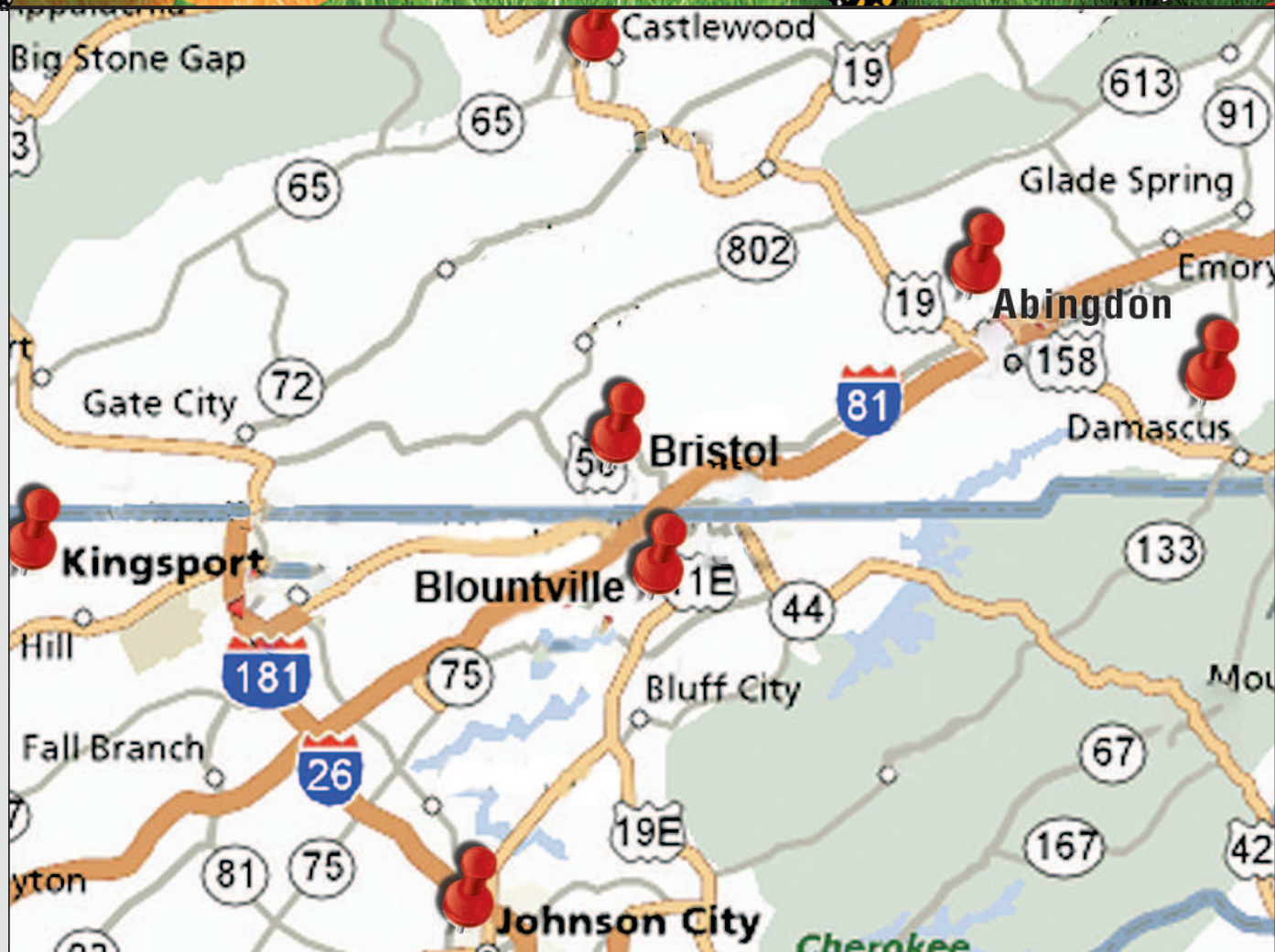
BRISTOL HERALD COURIER

ADVERTISING SUPPLEMENT

MAY 25, 2017

- BILL GATTON CHEVROLET
CADILLAC
- WALLACE USED CARS
- PIONEER CHEVROLET
- CRABTREE BUICK GMC
- MORGAN McCLURE CHEVROLET
- FREEDOM FORD WISE
- BILL GATTON HONDA
- EMPIRE FORD

BRISTOL
HERALD
COURIER



CALL: 423-764-5121 • TOLL FREE 1-800-815-3627

CLICK: www.billgatton.com

VISIT: BILL GATTON

1000 WEST STATE STREET
BRISTOL, TN - 423-764-5121

**BUY YOUR CHEVY AT
BILL GATTON CHEVY ...Why In
The World Would You Not**





Certified Pre-Owned

CERTIFIED PRE-OWNED SALE

2015 LINCOLN MKC

AWD, loaded,
Certified, auto
#3312
(560023)



2015 LINCOLN MKC

AWD, loaded,
Certified, 32k miles
#0791



2013 JEEP WRANGLER UNLIMITED SAHARA 4X4

4dr, 39K mi,
auto, air,
leather
#0108



\$CALL

2014 FORD MUSTANG CONV

6 cyl, auto, air,
loaded, 46k,
Certified
#1305



\$17,750

2014 FORD MUSTANG

V6 coupe, 17k
miles #294293
(558925)



\$21,995

2016 DODGE GRAND CARAVAN R/T

24k miles, like
new
#242789
(555803)



\$23,995

2011 MERCEDES E-350

4 Matic, 35k
miles, like new,
loaded #7496
(559316)



\$26,995

2016 FORD MUSTANG GT

Conv't 5.0,
yellow, auto,
leather, alloys
#4597



\$34,700

2014 JEEP GRAND CHEROKEE

Limited
#407819
(558926)



\$26,995

2015 FORD F-150 LARIAT SPORT

Super Crew,
4x4, 25k mi,
ruby red, like
new #2306



\$44,995

2015 SUBARU WRX

AWD, Limited,
16K, 6 spd,
loaded
#8877



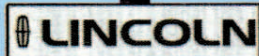
\$26,995

EMPIRE FORD LINCOLN



PRE-OWNED

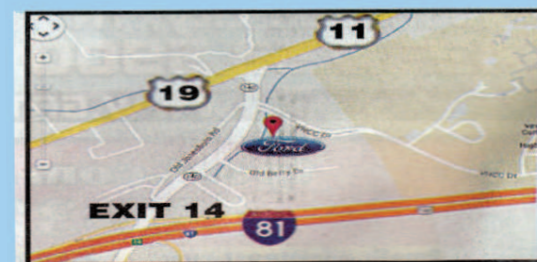
Exit 14 in Abingdon, VA



SERVING THE MOUNTAIN EMPIRE FOR OVER 20 YEARS

276-628-2127

276-669-4118

www.empireford.net

*Tax, title, tags not included. 78 mos @3.99APR w/approved credit + \$289 processing fee

WE FINANCE!

EMPIRE FORD in Abingdon

LINCOLN



Carl
Collins
Sales
&
Finance

LOT #2

520 Porterfield Hwy
Abingdon, VA
276-628-8183



Ronnie
Osborne
Sales

VA DLR • MON - SAT 8:30-6:00

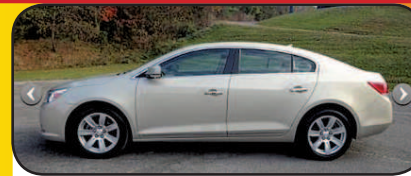
WWW.EMPIREFORD1.COM



2005 FORD F150
Crew Cab, Auto, PS, PL, PW
#82329
\$8,995



2012 NISSAN ALTIMA COUPE
4cyl, New Transmission
#182603
\$8,995



2011 BUICK LACROSSE
V6, auto, PW, PL, CD, tilt cruise
#116566 (559109)
\$11,650



2006 CHEVY MONTE CARLO LT
#338104
(558914)
\$5,995



2008 FORD EDGE FWD
V6 auto, PW, PL, CD, tilt cruise
#53261 (559107)
\$8,995



2006 CHRYSLER 300C
V8 auto, PW, PL, CD tilt cruise
#158596 (559108)
\$8,995



2012 FORD F150
Grey, local trade, 4dr, 4x4, V8,
auto, PW, PL, CD #73850
\$26,995



2014 FORD FOCUS
Blue, 4cyl, auto, PW, PL, CD, 30K
#327645 (559593)
\$13,995



2006 FORD F250
White, 4x4, V8 6-spd, PW, PL, CD
#66129
\$17,995



2012 FORD ESCAPE
Black, 4x4, V6 auto, PW, PL, CD,
100K #1644 (559597)
\$14,995



2011 GMC YUKON
White, 4x4, V8 auto, PW, PL, CD,
leather, 157K #170104 (559596)
\$CALL



2004 KIA AMANTI
Silver, V6, Auto, PW, PL
#22234
\$5,995



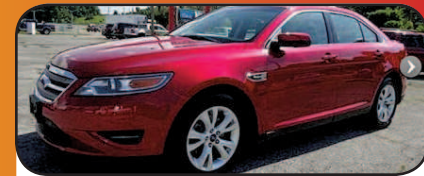
TOYOTA CAMRY
White, local trade, 4 cyl, auto,
PW, PL #650754
\$6,495



2008 CHEVY IMPALA
White, V6 auto, PW, PL
#175145
\$6,995



2003 FORD RANGER
Tan, 4x4, V6 auto, PW, PL
#35427 (559600)
\$7,495



2012 FORD TAURUS
P/Sunroof, V6 auto, loaded,
leather, 84K #126652 (559601)
\$13,995

BILL GATTON CHEVROLET-CADILLAC

CHEVROLET 

FIND NEW ROADS™

BUSINESS
ELITE
CHEVROLET**0%**
UP TO 72 MTHS
ON SELECT MODELS**SAVE A BUCK, SAVE A BUCK, SAVE A BUCK, BUCK, BUCK...**

2016 CHEVY MALIBU PREMIER

#6C335644



*SALE PRICE

\$30,999MSRP \$35,605
SALE PRICE \$31,999
REBATE \$1,000

* Net of all incentives

2017 CHEVY SONIC SEDAN RS

#7C150760



15% OFF

**SALE PRICE
\$17,268MSRP \$20,315
SALE PRICE \$19,268
REBATE \$500
SELECT BONUS CASH \$750
GMF DWN PYMT ASSIST \$750

* Net of all incentives

2017 CHEVY CRUZE LS

#7C163197



20% OFF

**SALE PRICE
\$16,288MSRP \$20,475
SALE PRICE \$19,288
REBATE \$1,500
SELECT BONUS CASH \$750
GMF DWN PYMT ASSIST \$750

* Net of all incentives

2017 CHEVY EQUINOX LS

#7T501251

MSRP \$26,455
SALE PRICE \$24,999
REBATE \$1,000
SELECT BONUS CASH \$1,000
BONUS CASH \$1,000
DWN PYMNT ASSIST \$1,000

**SALE PRICE

\$20,999

* Net of all incentives

2017 CHEVY CAMARO LT

#7C116107

*SALE PRICE
\$27,740MSRP \$29,240
SALE PRICE \$27,240
CHEVY LOYALTY \$1,500

* Net of all incentives

2017 CHEVY CORVETTE Z06 3LZ

#7C109701



12% OFF MSRP

*SALE PRICE
\$68,790MSRP \$78,170
SALE PRICE \$71,070
SELECT BONUS CASH \$2,280

* Net of all incentives

2017 CHEVY SILVERADO CREW CAB

Z71 LTZ

#7T322400



20% OFF

*SALE PRICE
\$41,857MSRP \$51,875
SALE PRICE \$46,357
REBATE \$1,000
SELECT BONUS CASH \$1,500
DWN PYMT ASSIST \$1,500
BONUS CASH \$500

* Net of all incentives

2017 CHEVY TAHOE PREMIER 4X4

#7T141335



12% OFF

*SALE PRICE
\$64,311MSRP \$73,080
SALE PRICE \$67,811
REBATE \$1,000
SELECT BONUS CASH \$1,500
BONUS CASH \$500
DWN PYMT ASSIST \$1,000

* Net of all incentives

2017 CHEVY SILVERADO 2500

MIDNITE 4X4

DURAMAX

DIESEL

#7T171880



13% OFF

*SALE PRICE
\$56,999MSRP \$64,125
SALE PRICE \$59,999
SELECT BONUS CASH \$1,500
BONUS CASH \$500
DWN PYMT ASSIST \$1,500

* Net of all incentives

BILL GATTON CHEVROLET-CADILLAC USED CAR SUPERCENTER



2016 JEEP RENEGADE 4x4
#51961P



2017 CHEVY CRUZE LT
#21536G



2016 FORD MUSTANG CONV.
#75243P - AUTO



2015 FORD T-350
#59002P - 15 PASSENGER



2016 CHEVY EQUINOX LT AWD
#50613P



2015 JEEP CHEROKEE LATITUDE
#68007P



2016 JEEP WRANGLER
#88924B - UNLIMITED
4x4, MOUNTAIN EDITION



2016 CHEVY CRUZE PREMIER
#76017G-LEATHER



2016 GMC TERRAIN SLE AWD
#79751G



2016 CHEVY CRUZE LT
#79769-G



2016 FORD TAURUS SEL
00480P - LEATHER, V6, WELL EQUIPPED



2015 FORD FIESTA HB SE
#11043P



2015 JEEP WRANGLER
#74934P
4X4, UNLIMITED



2016 CHEVY TRAX LT
#55817P



2016 CHEVY MALIBU LT
#68977G



SUPER SAVERS

2003 FORD F250 CREW XLT DIESEL 4X4 #49929B	\$16,983	2006 DODGE 300M #13826B	\$3,777
2004 CHEVY TRAILBLAZER #00591-B1	\$5,247	2007 FORD FOCUS SE 4DR #42208B	\$3,967
2005 JEEP GRAND CHEROKEE #09520A	\$6,357	2009 GMC CANYON CREW SLE #27749B	\$12,988
2007 FORD F150 XCAB 4X4 XLT #78597A	\$13,250	2008 HONDA ACCORD COUPE EX #15307A	\$7,579
2009 CHEVY MALIBU 2LT #40616B	\$9,464	2012 CHEVY CRUZE LS #10240A	\$7,843
2011 FORD FOCUS 4DR SE #11381B	\$7,999	2010 FORD EXPLORER 4X4 #26413B - EDDIE BAUER	\$11,039

*ALL PRICES PLUS \$449 DOC FEE. 0% APR FOR 72 MTHS MUST BE FINANCED THRU GM FINANCIAL. \$1,000 DOWN PAYMENT ASSISTANCE MUST BE FINANCED THRU GM FINANCIAL. CORVETTE LOYALTY MUST OWN A CORVETTE VERIFIED BY CURRENT REGISTRATION. 2016 OR 2017 CRUZE MUST BE FINANCED WITH GMF. PHOTOS ARE FACSIMILES. PLUS TAGS, TITLE, TAXES. ALL VEHICLE SUBJECT TO PRIOR SALE. NOT RESPONSIBLE FOR TYPOGRAPHICAL ERRORS. *STAND ALONE APR. MUST HAVE "99 TRADE OR NEWER. AS LONG AS SUPER TAGS ARE AVAILABLE. **39 MONTH LEASE W/ GM FINANCIAL. LEASE PAYMENT IS PLUS TAX, TITLE, PROCESSING FEE. FIRST MONTHS PAYMENT IS DUE AT SIGNING. \$395 DISPOSITION FEE DUE AT LEASE END. 10,000 MILES PER YEAR FOR 39 MONTHS WAC. TN RESIDENTS TAX IS BASED ON MONTHLY PAYMENT. VA RESIDENTS MUST PAY TAXES UP FRONT. MUST CURRENTLY LEASE AN 08 OR NEWER NON GM VEHICLE FOR LEASE CONQUEST. LEASE LOYALTY MUST CURRENTLY LEASE A CAR/LIGHT DUTY TRUCK. ONLY CURRENT LESSEES ARE ELIGIBLE. LEASE TERM IS 39 MONTHS, 10,000 MILES PER YEAR. PAYMENT IS PLUS TAX, TITLE & FEES AND FIRST MONTHS PAYMENT IS DUE AT SIGNING. \$395 DISPOSITION FEE DUE @ LEASE END. TN TAX BASED PER MONTHS PAYMENT. VA RESIDENTS MUST PAY TAXES UP FRONT. \$749 DOWN PAYMENT REQUIRED.

CALL: 423-764-5121 • TOLL FREE 1-800-815-3627

CLICK: www.billgatton.com

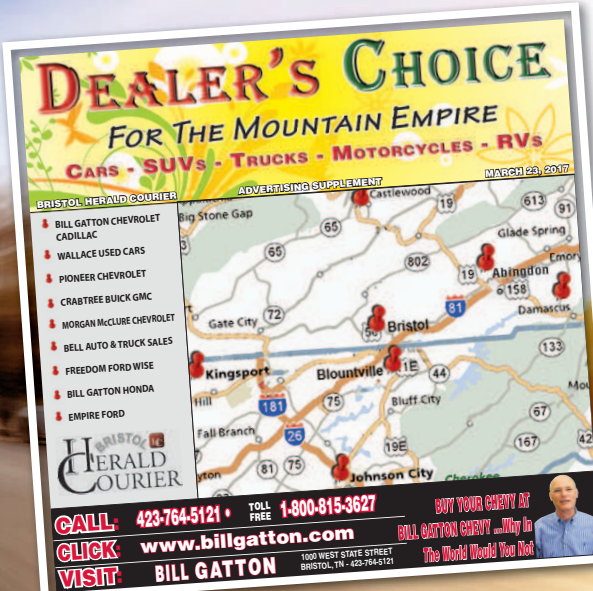
VISIT: BILL GATTON

1000 WEST STATE STREET
BRISTOL, TN - 423-764-5121

**BUY YOUR CHEVY AT
BILL GATTON CHEVY ...Why In
The World Would You Not**



Car Buying? Check out the Dealer's Choice



DEALER'S CHOICE
FOR THE MOUNTAIN EMPIRE
CARS - SUVs - TRUCKS - MOTORCYCLES - RVs

BRISTOL HERALD COURIER ADVERTISING SUPPLEMENT MARCH 23, 2017

- BILL GATTON CHEVROLET CADILLAC
- WALLACE USED CARS
- PIONEER CHEVROLET
- CRABTREE BUICK GMC
- MORGAN McCLURE CHEVROLET
- BELL AUTO & TRUCK SALES
- FREEDOM FORD WISE
- BILL GATTON HONDA
- EMPIRE FORD

CALL: 423-764-5121 • TOLL FREE 1-800-815-3627
CLICK: www.billgatton.com
VISIT: BILL GATTON

1000 WEST STATE STREET
BRISTOL, TN - 423-764-5121

BUY YOUR CARS AT
BILL GATTON CHEVRY ... Why In
The World Would You Not

A Special Section From

HERALD COURIER

**CALL BARRY HAMPTON 276.791.4625
TO PLACE YOUR AD**

WALLACE IMPORTS of Bristol

USED CAR SUPERCENTER

Shop The Right Way On The Parkway

wallaceauto.com • 423-764-1145



\$23995

2016 JEEP
RENEGADE
Limited 4WD
#884Q



\$14995

2008 TOYOTA
4RUNNER
4WD SR5
#21586A



\$54995

2016 RAM MEGA CAB
LIMITED
4X4
\$7170A



\$12995

2014 FORD
FOCUS SE
HATCHBACK
#883P



\$15995

2015 FORD
FUSION SE
#20842A



\$13995

2006 HUMMER
H3
#21116B



\$10995

2010 DODGE
JOURNEY SXT
AWD
#7065A



\$28995

2015 TOYOTA
TACOMA
X-CAB 4X4
#21500A



\$34995

2014 TOYOTA
FJ CRUISER
#21580A



\$29995

2014 JEEP
WRANGLER
RUBICON
#21521A



\$32995

2014 LEXUS
1S350 F-SPORT
AWD
#21516A



\$4995

2003 INFINITI
I35
#K3874A



\$16995

2014 VW
TIGUAN
CERTIFIED
#903P



\$18995

2013 KIA
SPORTAGE LX
AWD
#895P



\$8995

2012 HYUNDAI
VELOSTER
#7154A



\$14995

2011 NISSAN
ROGUE SV
AWD
#893P



<p>\$29995</p> <p>2016 GMC CANYON 4X4 #1893-SLE, V6, Like New, 57K</p>	<p>\$13995</p> <p>2012 NISSAN ALTIMA COUPE #7590-Auto, Leather, Sunroof, 35K miles</p>	<p>\$11995</p> <p>2011 HYUNDAI SONATA #2932-Well Maintained, 79K Miles</p>	<p>\$25400</p> <p>2010 NISSAN TITAN 4X4 #1638-LE, Leather, V8, Chrome Pkg, 35K</p>	<p>\$16995</p> <p>2013 SUBARU LEGACY #5430-4CYL, AWD, 58K MILES</p>
<p>\$19995</p> <p>2013 BMW X1 AWD #2073 - 28i, Turbo 4 cyl, Loaded</p>	<p>\$16500</p> <p>2014 JEEP COMPASS 4X4 #5397 - Limited, Leather, NAV, Low Miles</p>	<p>\$19995</p> <p>2015 MITSUBISHI OUTLANDER #3069-Sport, AWD, GT, Pano Sunroof</p>	<p>\$21995</p> <p>2014 CHEVY IMPALA LT2 #1848-Leather, Sunroof, V6, 17K Miles</p>	<p>\$17995</p> <p>2013 HONDA CRV AWD #6026 - EXL, Sunroof, Low Miles, Extra Clean</p>
<p>\$19995</p> <p>2011 FORD RANGER 4X4 #4665-XLT, Auto, 4.0V6, 47K, 4dr</p>	<p>\$30995</p> <p>2015 CHEVY SILVERADO 4X4 #9905-LS, 5.3V8, Locker, 27K Miles</p>	<p>\$13995</p> <p>2015 CHEVY SONIC #4035 - LT, Auto, 1.4 Turbo, 19K Miles</p>	<p>\$17995</p> <p>2015 FORD FUSION #6108-SE, Ecoboost, Local Trade, 18K</p>	<p>\$20995</p> <p>2013 NISSAN PATHFINDER 4X4 #8351-SL, Leather, 3rd Row Seat, 57K</p>
<p>\$24995</p> <p>2014 BUICK ENCORE AWD #1677-Leather, Sunroof, NAV, 17K miles</p>	<p>\$8995</p> <p>2012 CHEVY MALIBU LT #3765 - Auto, 4cyl</p>	<p>\$10995</p> <p>2008 BUICK LUCERNE #8643-CXL, Leather, Sunroof, 61K</p>	<p>\$22995</p> <p>2014 FORD ESCAPE 4X4 #4211-Titanium, Only 17K Miles</p>	<p>\$21995</p> <p>2014 GMC TERRAIN AWD #4163-SLE2, 4 CYL 33K MILES</p>

CRABTREE LOT OF BUDGET

2008 BUICK
LUCERNE
#5978 - 80K MILES
\$8,995



2010 SUZUKI
EQUATOR 4X4
#4625
\$15,995



00 BUICK
CENTURY
#8879
\$1,800

97 CHEVY
SUBURBAN
#0595
\$4,300

02 CHEVY
IMPALA
#2914
\$3,500

04 CHEVY
TAHOE
#1043
\$4,300

05 PONTIAC
G6
#3199
\$4,200

06 FORD
TAURUS
#3933
\$4,995

08 FORD
EXPLORER 4X4
#4690
\$12,995

07 GMC
ENVOY
#5138
\$9,995

98 CHEVY
S-10 ZR2
#5221
\$7,995

04 GMC
ENVOY SLT 4X4
#9020
\$7,995

05 MERCEDES
C340 AWD
#4423
\$4,900

1987 FORD
THUNDERBIRD
#2653
\$1,900

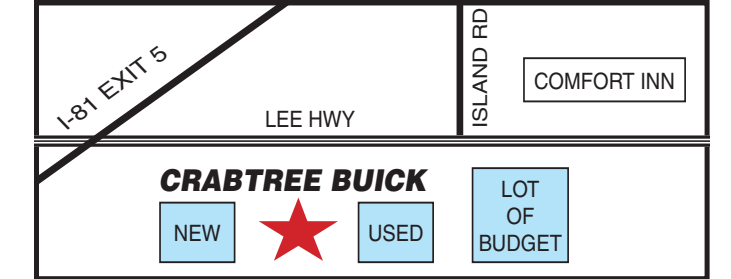
03 FORD
F-150 4X4
#9089
\$5,200

**WE BUY
CARS/
TRADE-INS!**



www.crabtreegmc.com
276-669-3141 • 888-377-1536
 Exit 5 Off I-81 on Lee Hwy
 Bristol, VA
OPEN MON-FRI 8AM-8PM
SAT. 8AM-6PM

**CREDIT
WORRIES?
WE CAN HELP!**
 Confidential
 Applications Taken
 By Phone



How to maintain car value over the long-term

When shopping for a new car, savvy buyers know finding the right car involves more than just finding the most comfortable or flashy vehicle. Numerous factors, including resale value, determine what makes a car the right car for a particular buyer.

Various websites and automotive resources rank vehicles based on their potential resale value, and drivers can do much to ensure their cars and trucks maintain that resale value over the long-term.

- Pay attention to the exterior. Much like homes with strong curb appeal can help homeowners get the best price for their homes when those homes are on the market, vehicles that look good can make strong first impressions on prospective buyers. Address any dings or dents on the car before putting it on the market, and make sure the car gets a thorough washing and waxing prior to showcasing it for potential buyers.

Upon purchasing new vehicles, drivers with their minds on maintaining resale values can park their cars or trucks in garages as often as possible to protect them from the elements. In addition, when parking in public, avoid tight parking spaces that can increase the likelihood that other drivers will ding or dent the vehicle when entering or exiting their own cars.

- Protect the interior. A well-maintained interior will impress buyers on multiple levels. Preowned buyers may feel more comfortable buying cars with well-maintained interiors that still make them feel as if they're buying a new vehicle. Vehicles with well-maintained interiors also give buyers the impression that sellers care about the vehicle and prioritized maintenance.

Avoid eating in the car, and immediately address any spills or stains. When taking the vehicle to a car wash, spend the extra money to have the interior cleaned as well. Seat covers can help protect cloth and leather interiors from spills, stains and cracking.

- Keep maintenance receipts. Another way to maintain resale value is to keep all maintenance receipts from the moment the vehicle is purchased. Preowned vehicle buyers are making substantial investments when buying preowned cars, and many will want to be certain they're investing in the right cars and trucks. Documentation with regards to the vehicle's maintenance can assuage any fears buyers may have and help sellers get the most money possible when putting their cars on the market.

Maintaining resale value is a concern for new car buyers who want to get the best returns on their automotive investments.



Maintaining a vehicle's interior can help owners protect its resale value.

Bill Gatton

Honda BRISTOL TENNESSEE



www.billgattonhonda.com

2130 Volunteer Parkway • Bristol, TN
423-968-5111 • 877-969-5111

hondasales@billgattonhonda.com



\$21,300

**2015 HONDA
ACCORD EX-O**

40K MILES, 4DR, AUTO, NICE #1712992



\$12,500

**2008 GMC
ACADIA**

V6, AUTO, LOADED #17H1412



\$36,900

**2016 FORD
F150 CREW CAB**

4X4, 9000 MILES, WARRANTY #17H1140



\$16,900

**2014 DODGE
CHARGER SE**

44K MILES, BLACK, LOADED #1712601



\$7,995

**2010 FORD
FOCUS SEL**

4DR #16H3861



\$17,750

**2016 CHEVY
CRUZE LT**

4K MILES, LIKE NEW #1712201



\$26,900

**2014 CHEVY
SILVERADO LT**

4DR, V8, LOADED #16H3721



\$32,900

**2015 DODGE
RAM 1500**

4X4, QUAD CAB, 15K #17H1130



\$19,900

**2014 HONDA
CRV EX**

AWD, 46K MILES, AUTO #17H1290



\$16,950

**2015 HONDA
FIT**

HATCHBACK 5K MILES #17H1400



\$24,200

**2015 FORD
FUSION TITANIUM**

AUTO, LOADED, LEATHER #17H1350



\$31,700

**2014 MERCEDES
GLK 350**

V6, AUTO, LOADED #17H1120



\$15,995

**2014 HONDA
CIVIC COUPE EX**

32K MILES, BLACK, SHARP #17H1450



\$9,475

**2010 TOYOTA
CAMRY**

4DR, AUTO, AIR, CD #1713081



\$22,995

**2016 JEEP
RENEGADE TRAILHAWK**

4X4, 18K MILES #17H0870



\$26,995

**2012 TOYOTA
FJ CRUISER**

4X4, MT, 6SPD, AIR & MORE #17H0990

**WE BUY CARS
TRUCKS & SUVs**

*Prices do not include tax, tags, license, W.A.C. Sale price includes processing fee of \$399.00 processing fee. Not responsible for typographical errors. Some pictures are for illustration only.



DENNY WAGERS
Sales Manager



UNLIMITED TIME & UNLIMITED MILES! ASK ABOUT OUR FREEDOM LIFETIME WARRANTY ON EVERY NEW & SELECT USED VEHICLE SOLD!

<p>\$SAVE!</p>  <p>2013 FORD FUSION #5011B, Auto, Leather, Back-up Camera, CD</p>	<p>\$CALL!</p>  <p>2014 SILVERADO 1500 4x4 #W233A, Crew, 5.3L V8, Bluetooth, Satellite radio</p>	<p>\$13,500</p>  <p>2012 HONDA FIT SPORT #3131M, Great Gas Mileage, Auto</p>	<p>\$26,900</p>  <p>2014 VW BEETLE LX #4350A, Convertible, TDI, Loaded, Red trim interior</p>	<p>\$47,900</p>  <p>2015 F150 LARIAT CREW #W224A, Like New, Auto, Leather, 4x4, Sunroof</p>
<p>\$CALL</p>  <p>2012 FORD F350 LARIAT 4x4 stk# W075A, Diesel, Super Duty, Crew, Leather</p>	<p>\$CALL</p>  <p>2012 TOYOTA CAMRY XLE #W32U, Back-up camera, Leather, Sunroof</p>	<p>\$CALL</p>  <p>2014 FORD ESCAPE SE #4087B, Satellite radio, Back-up camera, Keyless</p>	<p>\$CALL!</p>  <p>2012 CHEVY CRUZE LT stk#2288A, Auto, PW, PL, CD</p>	<p>\$16,500</p>  <p>2012 FORD FUSION SE #942R, Low miles, Auto, 4 cyl</p>
<p>\$SAVE!</p>  <p>2008 FORD TAURUS LIMITED #5120A, Auto, Leather, Sunroof, 6 cyl</p>	<p>\$CALL</p>  <p>2010 NISSAN MURANO S #W049A, AWD, Auto, All Power, Keyless entry</p>	<p>\$27,500</p>  <p>2015 VOLVO V60 T5 DRIVE E W136A, Premier Plus, Loaded, Leather, Sunroof</p>	<p>\$CALL!</p>  <p>2015 FORD TRANSIT VAN W23R, Low miles, 12 passenger, Auto, Rear storage</p>	<p>\$CALL!</p>  <p>2006 LINCOLN TOWN CAR #W28RA, Signature, Leather, Keyless entry</p>
<p>\$CALL!</p>  <p>2014 NISSAN ALTIMA 2.5 S #W21RB, Auto, 4 cyl, Loaded, A/C</p>	<p>\$SAVE!</p>  <p>2014 WRANGLER UNLIMITED #W147A, Sport, Auto, 6 cyl, 4x4, Super nice!</p>	<p>\$25,900</p>  <p>2014 FORD FLEX SE AWD #W34R, Auto, 3rd row, Steering wheel audio</p>	<p>\$CALL!</p>  <p>2010 FORD ESCAPE XLT #WF001A, Keyless entry, Auto, 4 cyl, PW, PL, 4x4</p>	<p>\$CALL</p>  <p>2012 TOYOTA CAMRY SE #W058A, Auto, Leather, Bluetooth, Navigation</p>
<p>\$CALL!</p>  <p>2015 FORD MUSTANG #85A, Auto, All Power, Loaded</p>	<p>\$CALL!</p>  <p>2011 FORD EDGE LIMITED #W039A, Auto, Leather, Sunroof, Steering controls</p>	<p>\$10,900</p>  <p>2012 FORD FOCUS #6165</p>	<p>\$CALL</p>  <p>2013 MITSUBISHI LANCER #8485S, Auto, PW, PL, CD, Cruise</p>	<p>\$CALL</p>  <p>'11 JEEP WRANGLER UNLIMITED #1294U, Sport, 4x4, V6, Manual transmission</p>

***FREEDOM



Wise, VA (276) 328-2686

www.NOTHINGLIKEFREEDOM.COM

*Taxes, tags, license, & \$399 processing fee not included, Prices good at time of sale with mention of this ad only. With approved credit. See dealer for details.

How to drive more efficiently

Many people aspire to drive more efficiently in an attempt to conserve fuel, save money and reduce the carbon footprints of their vehicles. But driving efficiently can also make driving safer for motorists, their passengers and everyone else, including pedestrians, sharing the roads.

Drivers who want to drive more efficiently can implement a variety of strategies to do just that.

- Obey the speed limits. Speed limits are determined with safety in mind, and drivers should always adhere to posted speed limits to protect themselves, their passengers and others on the road. The U.S. Department of Transportation notes that, in 2015, 27 percent of motor vehicle crash deaths were speeding-related. But according to the U.S. Environmental Protection Agency, obeying the speed limit is also cost-effective. The EPA notes that miles per gallon begins to dip dramatically when vehicles travel above 55 miles per hour. While each vehicle is different, the EPA notes that increasing highway cruising speed from 55 miles per hour to 75 miles per hour can raise fuel consumption by as much as 20 percent.

- Do not idle a vehicle. The Environmental Defense Fund notes that electronic engines do not need to warm up, even in winter when temperatures are especially cold. Vehicles that are idling can produce as much pollution as vehicles that are in motion, and idling for as little as 10 seconds wastes more gas than restarting the engine. Drivers concerned about over-



Effectively employing cruise control when driving on highways can improve fuel economy.

taxing their engines shortly after starting them can warm their engines by easing into their drives and avoiding excessive revving.

- Use cruise control wisely. Drivers concerned about fuel economy may be accustomed to turning on their vehicles' cruise control when driving long distances on the highway. While that is an effective and fuel-efficient way to maintain steady speeds, turn cruise control off when traversing roads with steep hills. On such roads, fuel efficiency can be lost because the vehicle engine is working harder to maintain

- Tighten the gas cap. When gas caps are loose, fuel evaporates. The Car Care Council notes that loose, missing or damaged gas caps contribute to the evaporation of roughly 147 million gallons of gas per year. That's both wasteful and costly. When filling up at the gas station, turn the cap until you hear it click.

Driving efficiently can make roadways safer, benefit the environment and save drivers considerable amounts of money.

GRAND SLAM DEALS!

PIONEER

Now 2 Locations To Serve You Better!



1135 W. MAIN ST, EXT 14 OFF I-81
ABINGDON, VA

More Available at
www.pioneerchevy.com

888-215-1771

WE BUY CARS ALL MAKES AND MODELS



NOW
\$25,995

2016 CHEVY EQUINOX LTZ AWD 18K miles, like new! #12543 **WAS \$27,995**



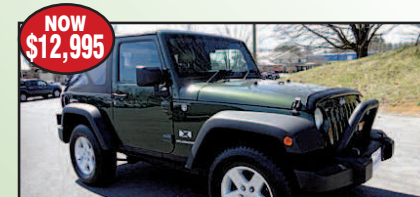
NOW
\$10,995

2009 TOYOTA CAMRY LE 128K Miles, Super Nice! #12258



NOW
\$7,895

2006 PONTIAC TORRENT AWD only 91K miles, local trade #7277AA **WAS \$10,995**



NOW
\$12,995

2007 JEEP WRANGLER X 4X4, local trade in **WAS \$15,995**



NOW
\$7,995

2004 CHEVY EXPRESS Cutaway Van, great work vehicle for Handyman. #7122A



NOW
\$25,995

2015 FORD TRANSIT VAN 350 15 passenger seating, 27K miles #12522



NOW
\$22,995

2016 JEEP RENEGADE Trail Hawk 4x4, 17K miles #12527. **WAS \$24,995**



NOW
\$21,995

2014 SUBARU CROSSTREK XV AWD only 37,000 miles. Super nice. **WAS \$23,995**



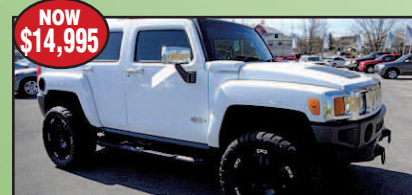
NOW
\$32,900

2013 CHEVY 1500 4x4, Ext Cab LT, 50K miles, 1 owner #7057A **WAS \$33,995**



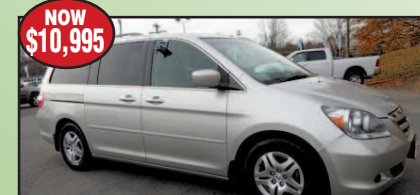
NOW
\$19,995

2012 TOYOTA RAV4 AWD Limited, V6, all power, 1 owner #12535 **WAS \$20,995**



NOW
\$14,995

2006 HUMMER H3 4WD local trade, clean condition #12313A **WAS \$16,995**



NOW
\$10,995

2007 HONDA ODYSSEY EX-L rear entertainment sys, 3rd row seating #12412A



NOW
\$21,995

2015 SCION FR-S only 21K Miles, 1 owner #12393. **WAS \$23,995**



NOW
\$29,995

2013 TOYOTA 4RUNNER 4WD, V6, 3rd row seating, loaded #12539



NOW
\$13,995

2012 HYUNDAI SONATA auto, air, PW, PL ONLY 47K #12378 **WAS \$15,995**



NOW
\$21,900

2013 ACURA TL SEDAN 1 owner, luxury sedan #12314 **WAS \$23,900**



\$52,095...MSRP
- \$500...Rebate
- \$1,000...Bonus Tag
- \$1,000...GMF DPA
- \$2500...MM Discount

**NEW 2017 GMC
Sierra SLT 4x4**

#18799, Navigation, Heated/cooled seats

**NOW
\$47,095***

Military Appreciation Month!



\$53,030...MSRP
- \$4,700...Rebate
- \$3,221...MM Discount

**NEW 2017 GMC
Sierra SLT Crew 4x4**

#18861, Z71, Nav., Premium Package

**NOW
\$45,109***



\$45,970...MSRP
- \$2,144...MM Discount
- \$4,350...Rebate

**NEW 2017
GMC Acadia
SLT AWD**

#18914, Lthr., Nav., Sunroof

**NOW
\$39,476***



\$40,035...MSRP
- \$1,835...MM Discount
- \$1,100...Rebate

**NEW 2017
GMC Canyon
SLT Crew 4x4**

#18940

**NOW
\$37,100***



\$49,890...MSRP
- \$1,500...MM Discount

**NEW 2017
GMC Acadia
LTD AWD**

#18753

**NOW
\$48,390***

**PLUS
0%** for 72 mos.
W.A.C.



\$50,390...MSRP
- \$1,591...MM Discount

**NEW 2017 GMC
Acadia LTD AWD**

#18773

**NOW
\$48,799***

**PLUS
0%** for 72 mos.
W.A.C.



WE ARE PROFESSIONAL GRADE



\$14,995*

2011 Toyota Avalon

#18752A



\$24,995*

2014 Cadillac ATS AWD

#6607, Loaded



\$38,995*

2010 Chevy Corvette

#18661A, 18K, Automatic



\$CALL!*

2015 Dodge Challenger

#6631



\$29,995*

2016 Honda CRV

#18532B



\$6,995*

2009 Ford Escape

#6440A, Limited, FWD



\$8,995*

2007 Camry Solara

#18785C, SLE



\$7,500*

2011 Nissan Sentra

stk# 18629A

MORGAN - McCLURE

US HIGHWAY 58, CASTLEWOOD, VA

VADLR

(276) 762-2311 • 1-800-834-3325 • morganmcclureauto.com

*PRICES LISTED AFTER ALL FACTORY REBATES & DEALER INCENTIVES. PRICES DO NOT INCLUDE TAXES, TITLE, OR TAG FEES. NO PROCESSING FEE. SUBJECT TO PRIOR SALE. WITH APPROVED CREDIT. OFFER ENDS 4/30/17. NOT ALL WILL QUALIFY. PHOTOS ARE FOR AD PURPOSES ONLY AND MAY NOT BE ACTUAL PHOTO.

 <p>CHEVY BONUS TAG</p> <p>\$59,635...MSRP - \$1,000...Rebate - \$1,000...PEB - \$500...Bonus Cash - \$6,536...MM Discount</p> <p>NEW 2017 Chevy Silverado 1500 #18936, Crew, LTZ, Loaded</p> <p>NOW \$49,999*</p>	 <p>CHEVY BONUS TAG</p> <p>\$68,605...MSRP - \$7,506...MM Discount</p> <p>NEW 2017 Chevy 2500 LTZ Crew #18938, Duramax, Loaded</p> <p>NOW \$61,099*</p>	 <p>CHEVY BONUS TAG</p> <p>\$27,685...MSRP - \$5,458...20% OFF</p> <p>NEW 2017 Chevy Malibu LT #18830, Convenience & Tech Pkg</p> <p>NOW \$22,227*</p>	 <p>CHEVY BONUS TAG</p> <p>\$28,685...MSRP - \$5,658...20% OFF</p> <p>NEW 2017 Chevy Malibu LT #18687, Leather Pkg, Tech Pkg.</p> <p>NOW \$23,027*</p>
 <p>CHEVY BONUS TAG</p> <p>\$20,855...MSRP - \$1,500...Rebate - \$750...Bonus Tag - \$750...GMF DPA - \$500...MM Discount</p> <p>NEW 2017 Chevy Cruze #18918</p> <p>NOW \$17,355*</p>	 <p>CHEVY BONUS TAG</p> <p>\$32,200...MSRP - \$1,000...Rebate - \$500...Bonus Cash - \$1,000...Bonus Tag - \$1,000...GMF DPA - \$1,000...MM Discount</p> <p>NEW 2017 Chevy Equinox LT AWD #18895</p> <p>NOW \$27,700*</p>	 <p>CHEVY BONUS TAG</p> <p>\$49,450...MSRP - \$2,451...MM Discount - \$1,000...Rebate - \$1,000...PDU - \$500...Bonus Cash - \$1,500...Bonus Tag - \$1,500...GMF DPA</p> <p>NEW 2017 Chevy Silverado 1500 #18911, Crew, Z71</p> <p>NOW \$41,499*</p>	 <p>CHEVY BONUS TAG</p> <p>\$49,245...MSRP - \$2,246...MM Discount - \$1,000...Rebate - \$1,000...PDU - \$500...Bonus Cash - \$1,500...Bonus Tag - \$1,500...GMF DPA</p> <p>NEW 2017 Chevy Silverado 1500 #18734, Crew, Z71</p> <p>NOW \$41,499*</p>



FIND NEW ROADS™

 <p>\$31,995*</p> <p>2015 Toyota Highlander #18813A</p>	 <p>\$47,995*</p> <p>2017 Ford F250 4x4 #6618, Diesel, Crew cab, 16K miles</p>	 <p>\$16,995*</p> <p>2005 Silverado 1500 #18633A, Off Road, Z71, 4x4, Crew, Auto</p>	 <p>\$9,995*</p> <p>2004 Ford Ranger #6596</p>
 <p>\$22,995*</p> <p>2013 Chevy Traverse #18584A, AWD, low miles, leather, backup camera</p>	 <p>\$26,995*</p> <p>2010 GMC Yukon #6560A</p>	 <p>\$7,995*</p> <p>2006 Trailblazer 4x4 #18837B</p>	 <p>\$8,995*</p> <p>2010 Dodge Caravan #18217C</p>

MORGAN - McCLURE

US HIGHWAY 58, CASTLEWOOD, VA

VADLR

(276) 762-2311 • 1-800-834-3325 • morganmcclureauto.com

*PRICES LISTED AFTER ALL FACTORY REBATES & DEALER INCENTIVES. PRICES DO NOT INCLUDE TAXES, TITLE, OR TAG FEES. NO PROCESSING FEE. SUBJECT TO PRIOR SALE. WITH APPROVED CREDIT. OFFER ENDS 4/30/17. NOT ALL WILL QUALIFY. PHOTOS ARE FOR AD PURPOSES ONLY AND MAY NOT BE ACTUAL PHOTO.