

# DEALER'S CHOICE

## FOR THE MOUNTAIN EMPIRE

### CARS - SUVs - TRUCKS - MOTORCYCLES - RVs

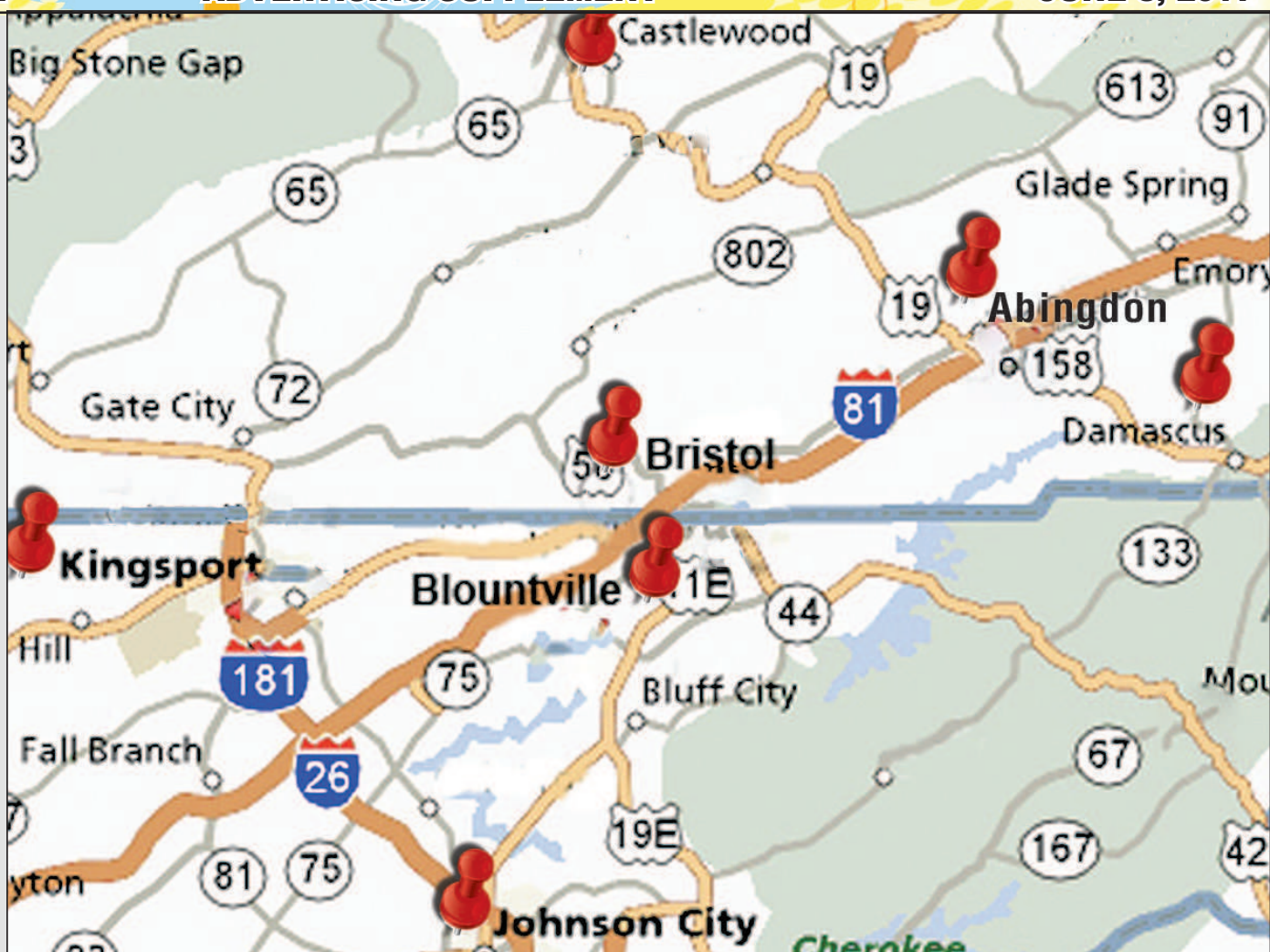
BRISTOL HERALD COURIER

ADVERTISING SUPPLEMENT

JUNE 8, 2017

- BILL GATTON CHEVROLET CADILLAC
- WALLACE USED CARS
- PIONEER CHEVROLET
- CRABTREE BUICK GMC
- MORGAN McCLURE CHEVROLET
- FREEDOM FORD WISE
- BILL GATTON HONDA
- EMPIRE FORD

BRISTOL  
HERALD  
COURIER



**CALL:** 423-764-5121 • TOLL FREE 1-800-815-3627

**CLICK:** [www.billgatton.com](http://www.billgatton.com)

**VISIT:** BILL GATTON

1000 WEST STATE STREET  
BRISTOL, TN - 423-764-5121

BUY YOUR CHEVY AT  
BILL GATTON CHEVY ...Why In  
The World Would You Not





# CERTIFIED PRE-OWNED SALE

## 2014 FORD MUSTANG CONV

6 cyl, auto, air, loaded,  
46k, Certified  
#1305



**\$17,750**

## 2014 FORD MUSTANG GT

Premium 5.0 V8,  
6spd, only 15K miles  
#298696



**\$30,995**

## 2007 TOYOTA AVALON

Low miles,  
loaded  
#8101



**\$10,995**

## 2015 LINCOLN MKC

AWD, loaded,  
Certified,  
32k miles  
#0791



**\$17,750**

## 2014 FORD MUSTANG

V6 coupe, 17k  
miles #294293  
(558925)



**\$21,995**

## 2016 DODGE GRAND CARAVAN R/T

24k miles, like  
new  
#242789  
(555803)



**\$22,781**

## 2011 MERCEDES E-350

4 Matic, 35k  
miles, like new,  
loaded #7496  
(559316)



**\$26,995**

## 2015 LINCOLN MKC

AWD, loaded,  
Certified, 32k  
miles  
#0791



**\$CALL**

## 2014 JEEP GRAND CHEROKEE

Limited  
#407819  
(558926)



**\$26,995**

## 2015 FORD F-150 LARIAT SPORT

Super Crew,  
4x4, 25k mi,  
ruby red, like  
new #2306



**\$44,995**

## 2015 SUBARU WRX

AWD, Limited,  
16K, 6 spd,  
loaded  
#8877



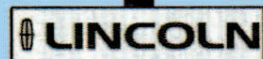
**\$26,995**

# EMPIRE FORD LINCOLN



PRE-OWNED

Exit 14 in Abingdon, VA



SERVING THE MOUNTAIN EMPIRE FOR OVER 20 YEARS

276-628-2127

276-669-4118



[www.empireford.net](http://www.empireford.net)

\*Tax, title, tags not included. 78 mos @3.99APR w/approved credit + \$289 processing fee

# WE FINANCE!

## EMPIRE FORD in Abingdon

LINCOLN

LOT #2

520 Porterfield Hwy  
Abingdon, VA  
276-628-8183



VA DLR • MON - SAT 8:30-6:00

WWW.EMPIREFORD1.COM



2005 FORD F150  
Crew Cab, Auto, PS, PL, PW  
#82329  
**\$8,995**



2012 NISSAN ALTIMA COUPE  
4cyl, New Transmission  
#182603  
**\$8,995**



2011 BUICK LACROSSE  
V6, auto, PW, PL, CD, tilt cruise  
#116566 (559109)  
**\$11,650**



2006 CHEVY MONTE CARLO LT  
#338104  
(558914)  
**\$5,995**



2008 FORD EDGE FWD  
V6 auto, PW, PL, CD, tilt cruise  
#53261 (559107)  
**\$8,995**



2006 CHRYSLER 300C  
V8 auto, PW, PL, CD tilt cruise  
#158596 (559108)  
**\$8,995**



2012 FORD F150  
Grey, local trade, 4dr, 4x4, V8,  
auto, PW, PL, CD #73850  
**\$26,995**



2006 JEEP G.CHEROKEE LTD  
Tan, 4x4, sunroof, 5.7L V8 auto,  
loaded, PW PL, 103K #167703  
**\$11,595**



2006 FORD F250  
White, 4x4, V8 6-spd, PW, PL, CD  
#66129  
**\$17,995**



2012 FORD ESCAPE  
Black, 4x4, V6 auto, PW, PL, CD,  
100K #1644 (559597)  
**\$14,995**



2011 GMC YUKON  
White, 4x4, V8 auto, PW, PL, CD,  
leather, 157K #170104 (559596)  
**\$CALL**



2004 KIA AMANTI  
Silver, V6, Auto, PW, PL  
#22234  
**NOW \$3,964**



2007 TOYOTA CAMRY  
White, local trade, 4 cyl, auto,  
PW, PL #650754  
**\$6,495**



2008 CHEVY IMPALA  
White, V6 auto, PW, PL  
#175145  
**\$6,995**



2004 DODGE DAKOTA  
Black, V8, auto, air, 137k  
#548146(560527)  
**\$5,995**



2011 DODGE DURANTO  
AWD, local trade, V6, auto, PW, PL  
#624212 (560529)  
**\$14,995**

# BILL GATTON CHEVROLET-CADILLAC

CHEVROLET 

FIND NEW ROADS™

BUSINESS  
ELITE**0%**  
UP TO 72 MTHS  
ON SELECT MODELS**SAVE A BUCK, SAVE A BUCK, SAVE A BUCK, BUCK, BUCK...**

2016 CHEVY MALIBU PREMIER

#6C335644



2017 CHEVY SONIC SEDAN LT/RS

#7C150760

7 TO  
CHOOSE  
FROM

2017 CHEVY CRUZE LS

#7C163197

13 TO  
CHOOSE  
FROM

\*SALE PRICE

**\$29,999**MSRP  
SALE PRICE  
REBATE\$35,605  
\$32,999  
\$3,000

\* Net of all incentives

**25% OFF MSRP  
ON ALL LT'S**

\* Net of all incentives

**15% OFF MSRP**

\* Net of all incentives

2017 CHEVY EQUINOX LT

#7T501251

2 TO  
CHOOSE  
FROM

2017 CHEVY CAMARO

#7C116107

9 TO  
CHOOSE  
FROM

2017 CHEVY CORVETTE Z51

#7C109701

**20% OFF MSRP**

\* Net of all incentives

**12% OFF MSRP**

WITH MUSTANG-CONQUEST

**12% OFF MSRP**

\* Net of all incentives

2017 CHEVY SILVERADO 1500 CREW CAB

LT Z71 4X4

#7T322400

31 TO  
CHOOSE  
FROM

2017 CHEVY TAHOE / SUBURBAN

#7T141335

11 TO  
CHOOSE  
FROM

2017 CHEVY SILVERADO 2500

CREW/DOUBLE CAB  
ALL STAR LT

#7T171880

6 TO  
CHOOSE  
FROM**\$11,000 OFF MSRP**

\* Net of all incentives

**10% OFF MSRP**

\* Net of all incentives

**13% OFF MSRP**

\* Net of all incentives

# BILL GATTON CHEVROLET-CADILLAC USED CAR SUPERCENTER

2016 CHEVY MALIBU LT  
#49179P



**\$13,999**

2016 JEEP RENEGADE 4x4  
#51961P



**\$21,777**

2017 CHEVY CRUZE LT  
#21536G



**\$14,999**

6 TO CHOOSE FROM

2016 FORD MUSTANG CONV.  
#75243P - AUTO



**\$19,446**

2015 FORD T-350  
#59002P - 15 PASSENGER



**\$23,208**

2016 CHEVY EQUINOX LT AWD  
#50613P



**\$20,850**

2015 JEEP CHEROKEE LATITUDE  
#68007P



**\$16,588**

2010 JEEP WRANGLER  
#88924B - UNLIMITED  
4x4, MOUNTAIN EDITION



**\$23,999**

2016 CHEVY CRUZE PREMIER  
#81404G



**\$15,999**

2016 GMC TERRAIN SLE AWD  
#84177G



**\$20,999**

2016 CHEVY CRUZE LT  
#80429G



**\$13,999**

2016 FORD TAURUS SEL  
00480P - LEATHER, V6, WELL EQUIPPED



**\$19,999**

2015 FORD FIESTA 5DR  
#14034P



**\$9,777**

2015 JEEP WRANGLER  
#74934P  
4X4, UNLIMITED



**\$26,670**

2016 CHEVY TRAX LT  
#55817P



**\$16,588**

2016 NISSAN VERSA SV  
#46380P



**\$9,999**

## SUPER SAVERS

2003 FORD F250 CREW XLT DIESEL 4X4 #49929B .....	<b>\$16,983</b>
2004 CHEVY TRAILBLAZER #00591-B1 .....	<b>\$5,247</b>
2005 JEEP GRAND CHEROKEE #09520A .....	<b>\$6,357</b>
2007 HONDA PILOT EX- 4X4 #22897A.....	<b>\$10,145</b>
2008 CHEVY EQUINOX AWD SPORT #51383B.....	<b>\$61,196</b>
2011 FORD FOCUS 4DR SE #11381B .....	<b>\$7,288</b>

2006 DODGE 300M #13826B .....	<b>\$3,777</b>
2007 FORD FOCUS SE 4DR #42208B .....	<b>\$3,850</b>
2009 GMC CANYON CREW SLE #27749B .....	<b>\$12,988</b>
2008 HONDA ACCORD COUPE EX #15307A.....	<b>\$7,299</b>
2012 CHEVY CRUZE LS #10240A.....	<b>\$6,433</b>
2010 FORD EXPLORER 4X4 #26413B - EDDIE BAUER.....	<b>\$11,039</b>

\*ALL PRICES PLUS \$449 DOC FEE. 0%APR FOR 72 MTHS MUST BE FINANCED THRU GM FINANCIAL. \$1,000 DOWN PAYMENT ASSISTANCE MUST BE FINANCED THRU GM FINANCIAL. CORVETTE LOYALTY MUST OWN A CORVETTE VERIFIED BY CURRENT REGISTRATION. 2016 OR 2017 CRUZE MUST BE FINANCED WITH GMF. PHOTOS ARE FACSIMILES. PLUS TAGS, TITLE, TAXES. ALL VEHICLE SUBJECT TO PRIOR SALE. NOT RESPONSIBLE FOR TYPOGRAPHICAL ERRORS. \*STAND ALONE APR. MUST HAVE \*\*99 TRADE OR NEWER. AS LONG AS SUPER TAGS ARE AVAILABLE. \*\*39 MONTH LEASE W/GM FINANCIAL. LEASE PAYMENT IS PLUS TAX, TITLE, PROCESSING FEE. FIRST MONTHS PAYMENT IS DUE AT SIGNING. \$395 DISPOSITION FEE DUE AT LEASE END. 10,000 MILES PER YEAR FOR 38 MONTHS WAC. TN RESIDENTS TAX IS BASED ON MONTHLY PAYMENT. VA RESIDENTS MUST PAY TAXES UP FRONT. MUST CURRENTLY LEASE AN 08 OR NEWER NON GM VEHICLE FOR LEASE CONQUEST. LEASE LOYALTY MUST CURRENTLY LEASE A CAR/LIGHT DUTY TRUCK. ONLY CURRENT LESSEES ARE ELIGIBLE. LEASE TERM IS 39 MONTHS, 10,000 MILES PER YEAR. PAYMENT IS PLUS TAX, TITLE & FEES AND FIRST MONTHS PAYMENT IS DUE AT SIGNING. \$395 DISPOSITION FEE DUE @ LEASE END. TN TAX BASED PER MONTHS PAYMENT. VA RESIDENTS MUST PAY TAXES UP FRONT. \$749 DOWN PAYMENT REQUIRED.

**CALL: 423-764-5121 • TOLL FREE 1-800-815-3627**

**CLICK: www.billgatton.com**

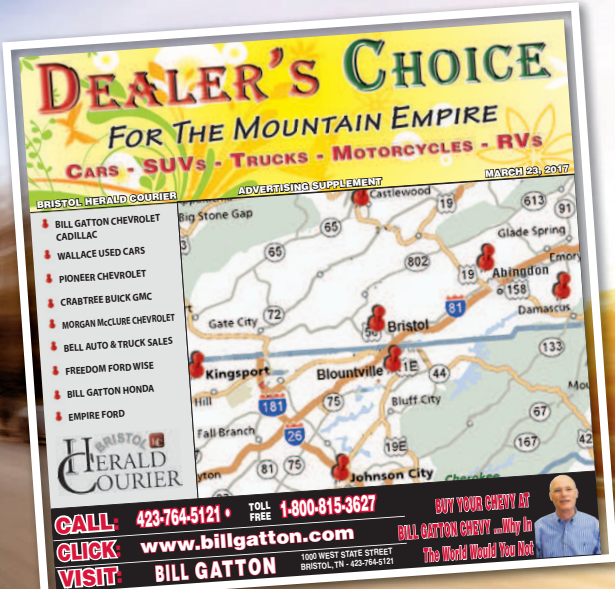
**VISIT: BILL GATTON**

1000 WEST STATE STREET  
BRISTOL, TN - 423-764-5121

**BUY YOUR CHEVY AT  
BILL GATTON CHEVY ...Why In  
The World Would You Not**



# Car Buying? Check out the Dealer's Choice



**DEALER'S CHOICE**  
FOR THE MOUNTAIN EMPIRE  
CARS - SUVs - TRUCKS - MOTORCYCLES - RVs

ADVERTISING SUPPLEMENT MARCH 23, 2017

BRISTOL HERALD COURIER

- BILL GATTON CHEVROLET CADILLAC
- WALLACE USED CARS
- PIONEER CHEVROLET
- CRABTREE BUICK GMC
- MORGAN McCLURE CHEVROLET
- BELL AUTO & TRUCK SALES
- FREEDOM FORD WISE
- BILL GATTON HONDA
- EMPIRE FORD

HERALD COURIER

CALL: 423-764-5121 • TOLL FREE 1-800-815-3627

CLICK: [www.billgatton.com](http://www.billgatton.com)

VISIT: BILL GATTON

1000 WEST STATE STREET  
BRISTOL, TN - 423-764-5121

BUY YOUR CARS AT  
BILL GATTON CHEVRY ... Why In  
The World Would You Not

A Special Section From

## HERALD COURIER

CALL BARRY HAMPTON 276.791.4625  
TO PLACE YOUR AD

# WALLACE IMPORTS of Bristol

## USED CAR SUPERCENTER

*Shop The Right Way On The Parkway*

wallaceauto.com • 423-764-1145



**\$23995**

2016 JEEP  
RENEGADE  
Limited 4WD  
#884Q



**\$9995**

2011 HONDA  
CIVIC EX  
#20870C  
(560799)



**\$10995**

2012 KIA  
SORENTO LX  
AWD #K51A  
(560800)



**\$10995**

2014 FORD  
FOCUS SE  
HATCHBACK  
#883P



**\$15995**

2015 FORD  
FUSION SE  
#20842A



**\$13995**

2006 HUMMER  
H3  
#21116B



**\$12995**

2012 DODGE  
DURANGO  
CREW, AWD  
#K4247A



**\$14295**

2016 HYUNDAI  
ELANTRA SE  
#K4087A  
(560802)



**\$34995**

2014 TOYOTA  
FJ CRUISER  
#21580A



**\$29995**

2014 JEEP  
WRANGLER  
RUBICON  
#21521A



**\$32995**

2014 LEXUS  
1S350 F-SPORT  
AWD  
#21516A



**\$3995**

2003 INFINITI  
I35  
#K3874A



**\$16995**

2014 VW  
TIGUAN  
CERTIFIED  
#903P



**\$13995**

2014 HYUNDAI  
SONATA GLS  
#907P  
(560803)



**\$8995**

2012 HYUNDAI  
VELOSTER  
#7154A



**\$14995**

2011 NISSAN  
ROGUE SV  
AWD  
#893P



<p><b>\$29995</b></p> <p>2016 GMC CANYON 4X4 #1893-SLE, V6, Like New, 57K</p>	<p><b>\$13500</b></p> <p>2012 NISSAN ALTIMA COUPE #7590-Auto, Leather, Sunroof, 35K miles</p>	<p><b>\$11400</b></p> <p>2011 HYUNDAI SONATA #2932-Well Maintained, 79K Miles</p>	<p><b>\$24995</b></p> <p>2010 NISSAN TITAN 4X4 #1638-LE, Leather, V8, Chrome Pkg, 35K</p>	<p><b>\$15995</b></p> <p>2013 SUBARU LEGACY #5430-4CYL, AWD, 58K MILES</p>
<p><b>\$19600</b></p> <p>2013 BMW X1 AWD #2073 - 28i, Turbo 4 cyl, Loaded</p>	<p><b>\$15995</b></p> <p>2014 JEEP COMPASS 4X4 #5397 - Limited, Leather, NAV, Low Miles</p>	<p><b>\$19800</b></p> <p>2015 MITSUBISHI OUTLANDER #3069-Sport, AWD, GT, Pano Sunroof</p>	<p><b>\$20995</b></p> <p>2014 CHEVY IMPALA LT2 #1848-Leather, Sunroof, V6, 17K Miles</p>	<p><b>\$17700</b></p> <p>2013 HONDA CRV AWD #6026 - EXL, Sunroof, Low Miles, Extra Clean</p>
<p><b>\$18995</b></p> <p>2011 FORD RANGER 4X4 #4665-XLT, Auto, 4.0V6, 47K, 4dr</p>	<p><b>\$29995</b></p> <p>2015 CHEVY SILVERADO 4X4 #9905-LS, 5.3V8, Locker, 27K Miles</p>	<p><b>\$12995</b></p> <p>2015 CHEVY SONIC #4035 - LT, Auto, 1.4 Turbo, 19K Miles</p>	<p><b>\$16600</b></p> <p>2015 FORD FUSION #6108-SE, Ecoboost, Local Trade, 18K</p>	<p><b>\$20995</b></p> <p>2013 NISSAN PATHFINDER 4X4 #8351-SL, Leather, 3rd Row Seat, 57K</p>
<p><b>\$23995</b></p> <p>2014 BUICK ENCORE AWD #1677-Leather, Sunroof, NAV, 17K miles</p>	<p><b>\$8800</b></p> <p>2012 CHEVY MALIBU LT #3765 - Auto, 4cyl</p>	<p><b>\$9995</b></p> <p>2008 BUICK LUCERNE #8643-CXL, Leather, Sunroof, 61K</p>	<p><b>\$21500</b></p> <p>2014 FORD ESCAPE 4X4 #4211-Titanium, Only 17K Miles</p>	<p><b>\$21300</b></p> <p>2014 GMC TERRAIN AWD #4163-SLE2, 4 CYL 33K MILES</p>

# CRABTREE LOT OF BUDGET

2008 BUICK  
LUCERNE  
#5978 - 80K MILES  
**\$8,995**



2010 SUZUKI  
EQUATOR 4X4  
#4625  
**\$15,995**



08 CHEVY  
MALIBU  
#4424 - 89K MILES  
**\$6,995**

97 CHEVY  
SUBURBAN  
#0595  
**\$4,300**

02 CHEVY  
IMPALA  
#2914  
**\$3,500**

04 CHEVY  
TAHOE  
#1043  
**\$4,300**

05 PONTIAC  
G6  
#3199  
**\$4,200**

06 FORD  
TAURUS  
#3933  
**\$4,995**

08 FORD  
EXPLORER 4X4  
#4690  
**\$12,995**

07 GMC  
ENVOY  
#5138  
**\$9,995**

02 BUICK  
CENTURY  
#4954 - 80K MILES  
**\$5,995**

04 GMC  
ENVOY SLT 4X4  
#9020  
**\$7,995**

00 BUICK  
CENTURY  
#8788  
**\$4,200**

06 BUICK  
LUCERNE  
#7087  
**\$5,995**

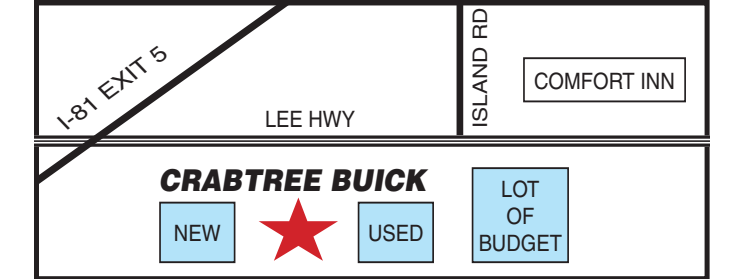
03 FORD  
F-150 4X4  
#9089  
**\$4,500**

**WE BUY  
CARS/  
TRADE-INS!**



**www.crabtreegmc.com**  
**276-669-3141 • 888-377-1536**  
 Exit 5 Off I-81 on Lee Hwy  
 Bristol, VA  
**OPEN MON-FRI 8AM-8PM**  
**SAT. 8AM-6PM**

**CREDIT  
WORRIES?  
WE CAN HELP!**  
*Confidential  
Applications Taken  
By Phone*





# Safe driving tips for teen drivers

Earning a driver's license is a milestone in a young person's life. Teenagers typically take to the open road without adults riding shotgun between the ages of 16 and 18, depending on where kids live. Although this can be an exciting time for them, it's also a time that can change the family dynamic.

Parents may have mixed feelings about their children getting their drivers' licenses. Although many parents recognize the convenience of having another licensed driver in the house, it's understandable if moms and dads are weary about inexperienced children behind the wheel.

Such fears are not unfounded, as vehicular fatalities remain the leading cause of death for many teenagers. In the United States, teens are three times more likely to crash per mile driven than adults, according to data from Allstate. The Canadian Automobile Association states that drivers in Canada between the ages 16 and 19 years have a fatality rate that is more than four times as high as that of drivers between the ages of 25 and 34 and nine times as high as that of drivers between the ages 45 and 54. To help reduce the propensity for crashes, injury and death, families can work together to focus on safe driving tips.

- Take a safe-driving course. Any licensed driver can benefit from a safe-driving course. Check with the department of motor vehicles to find an approved list of driving courses available. In addition to providing valuable safety tips, enrollment in these courses may entitle people to discounts on auto insurance.

- Stay off of the phone. Texting and making phone calls reduces alertness on the road. That loss of focus, even if only for a few seconds, can result in drivers driving



- the equivalent of an entire football field without having their eyes on the road. Avoid mobile devices while driving. Pull over to make a call if there is an emergency; otherwise, leave the phone out of reach in a backseat.

- Use the headlights. Many cars now feature daytime running lights. For those that don't, engage the headlights when driving. Using headlights increases visibility and helps other drivers see approaching vehicles, even during the daytime.

- Leave plenty of time. Rushing around to make it to class or other appointments can lead to speeding and other dangerous driving habits. By leaving extra time, drivers will not feel stressed or rushed.

- Limit distractions behind the wheel. Novice drivers may become easily distracted by the radio or even other passengers. Until they gain ample experience, teen drivers should keep passengers and noises to a minimum.

- Stick to easy parking for now. New drivers can opt to park in spaces that have plenty of room or allow for pulling out (rather than backing out). This can improve visibility and reduce the risk of hitting other vehicles.

Driving is exciting for newly licensed teens, but parents must emphasize the importance of defensive driving to their young drivers.

# Bill Gatton

Honda BRISTOL TENNESSEE



www.billgattonhonda.com

2130 Volunteer Parkway • Bristol, TN  
423-968-5111 • 877-969-5111

hondasales@billgattonhonda.com



**\$21,300**

**2015 HONDA  
ACCORD EX-L**

40K MILES, 4DR, AUTO, NICE #1712992



**\$14,995**

**2012 HONDA  
ACCORD 3.5 EXL**

66K MILES, LOADED #1712331



**\$36,900**

**2016 FORD  
F150 CREW CAB**

4X4, 9000 MILES, WARRANTY #17H1140



**\$16,900**

**2014 DODGE  
CHARGER SE**

44K MILES, BLACK, LOADED #1712601



**\$7,995**

**2010 FORD  
FOCUS SEL**

4DR #16H3861



**\$17,750**

**2016 CHEVY  
CRUZE LT**

4K MILES, LIKE NEW #1712201



**\$26,900**

**2014 CHEVY  
SILVERADO LT**

4DR, V8, LOADED #16H3721



**\$32,900**

**2015 DODGE  
RAM 1500**

4X4, QUAD CAB, 15K #17H1130



**\$19,900**

**2014 HONDA  
CRV EX**

AWD, 46K MILES, AUTO #17H1290



**\$16,950**

**2015 HONDA  
FIT**

HATCHBACK 5K MILES #17H1400



**\$24,200**

**2015 FORD  
FUSION TITANIUM**

AUTO, LOADED, LEATHER #17H1350



**\$31,700**

**2014 MERCEDES  
GLK 350**

V6, AUTO, LOADED #17H1120



**\$15,995**

**2014 HONDA  
CIVIC COUPE EX**

32K MILES, BLACK, SHARP #17H1450



**\$9,475**

**2010 TOYOTA  
CAMRY**

4DR, AUTO, AIR, CD #1713081



**\$22,995**

**2016 JEEP  
RENEGADE TRAILHAWK**

4X4, 18K MILES #17H0870



**\$26,995**

**2012 TOYOTA  
FJ CRUISER**

4X4, MT, 6SPD, AIR & MORE #17H0990

**WE BUY CARS  
TRUCKS & SUVs**

\*Prices do not include tax, tags, license, W.A.C. Sale price includes processing fee of \$399.00 processing fee. Not responsible for typographical errors. Some pictures are for illustration only.



**DENNY WAGERS  
Sales Manager**



**\$18,980****2016 KIA SPORTAGE LX**

#W250R, AWD, Auto, Low miles, Loaded

**\$14,025****2016 IMPALA LIMITED**

#W239U, LTZ, Low miles, Leather, Bluetooth

**\$SAVE!****2006 FORD MUSTANG**

#W287V, Convertible, Auto, Leather

**1 OWNER****\$8,990****2011 FORD TAURUS**

#W184S, SEL, Auto, PW, PL



#W140R, 40K, Back-up camera, leather

**\$17,480****2007 FORD F350 XL**

#5748C, XL, Automatic

**LIKE NEW!****\$22,984****2017 FORD ESCAPE SE**

#W303R, Auto, 4x4, Back-up camera



#W186S, Auto, Leather, Loaded, 53K

**\$8,980****2010 LINCOLN MKZ**

#W182S, Satellite radio, CD, All Power

**\$14,000****2009 RAM 1500 SLT 4x4**

#W629B, 4x4, Quad cab

**\$18,546****2014 TOYOTA RAV4 LE**

#W267R, AWD, Auto, Back-up camera

**\$26,000****2013 HONDA RIDGELINE**

#W192U, 51K, Auto, Leather, Sunroof, 4x4

**\$7,980****2008 FORD FUSION SE**

#W200U, Auto, V6, Power roof

**\$SAVE!****2011 FORD TAURUS SE**

stk#W840A, Auto, Satellite radio, All Pwr

**1 OWNER****\$23,000****2016 CHEVY TRAX AWD**

#W138U, LTZ, Auto, All Power, Leather

**\$12,900****2012 HONDA FIT SPORT**

#3131M, 5 door hatchback

**\$SAVE!****2017 EXPLORER SPORT**

#W290R, AWD, EcoBoost, Navigation, Lthr

**MUST SEE!****'16 MUSTANG CONVERTIBLE**

#W232R, EcoBoost premium, Loaded!

**\$12,674****2015 VW BEETLE**

#W291R, 1.8T Turbocharged, Auto, Lthr

**\$25,500****2016 OUTBACK 2.5i AWD**

#W236U, Backup camera, Loaded, Bluetooth

**\*\*\*FREEDOM****Wise, VA****(276) 328-2686****www.NOTHINGLIKEFREEDOM.com**

# See and be seen: How drivers can see better at night

(MS) - Though fewer cars are on the road at night than during the daytime, driving at night is still dangerous. In fact, the National Safety Council notes that drivers' risk of being in fatal car crashes is three times greater at night than it is during the daytime.

While a host of factors combine to make driving at night less safe than driving during the daytime, poor nighttime visibility is one of the biggest contributors to driver discomfort at night. Depth perception, color recognition and peripheral vision can diminish at night. Though many drivers recognize that their own visibility is compromised at night, few may consider that others motorists' nighttime visibility is similarly affected. Fortunately, there are a handful of ways that drivers can improve their visibility and make themselves more visible to fellow motorists when operating motor vehicles after the sun goes down.

- Get enough sleep. A recent poll from the National Sleep Foundation found that 13 percent of drivers acknowledged falling asleep while driving at least once per month. Poorly lit roadways and the absence of natural light can make tired drivers even more drowsy, furthering compromising their already diminished visibility. The NSF advises drivers to get between seven and nine hours of sleep per night, to avoid driving if they have been awake for 24 hours or more and to pull over for rest every two hours.

- Improve vehicle lighting. Compared to the standard incandescent lamps used by many of today's automotive manufacturers, LED lights are brighter and more visible to oncoming motorists. Unlike incandescent bulbs, Philips Vision LEDs remain bright and maintain their light intensity throughout the life of the lights. LEDs also can brighten up interior lights, such



*The instant-on response provided by Philips Vision LEDs can reduce braking distance by up to 20 feet at speeds of 75 miles per hour. Because they light up quicker, other drivers can see the vehicle sooner.*

as courtesy, dome, trunk and glove box. In addition, Vision LEDs were designed to be highly resistant to the extreme heat and vibrations that threaten standard incandescent bulbs, thereby increasing their durability and longevity.

- Get routine vision checkups. Vision checkups are necessary for all drivers, but especially so for aging motorists. According to the American Optometric Association, the diminished vision that many drivers experience when driving at night increases with age, highlighting the importance of annual vision checkups. The AOA also recommends that drivers minimize distractions when driving at night so they can better focus on the road ahead.

- Make your vehicle more visible. Even driv-

ers who are comfortable driving at night must share the roads with other motorists, who may not be as relaxed driving after sundown. Philips Vision LEDs turn on instantly and can be installed as replacements for manufacturers' brake and taillights, side markers, turn signals and back up lights, making vehicles more visible to fellow motorists and greatly decreasing reaction time. Brighter and therefore more visible to fellow drivers than standard incandescent bulbs, Vision LEDs employ instant-on response technology that can reduce braking distance by up to 20 feet at speeds as high as 75 miles per hour.

Drivers who are uncomfortable driving at night can employ several strategies to alleviate that discomfort. More information is available at [www.philips.com/visionled](http://www.philips.com/visionled).

# GRAND SLAM DEALS! PIONEER



Now 2 Locations To Serve You Better!

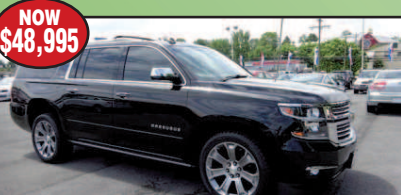


1135 W. MAIN ST, EXT 14 OFF I-81  
ABINGDON, VA

More Available at  
[www.pioneerchevy.com](http://www.pioneerchevy.com)

888-215-1771

**WE BUY CARS ALL MAKES AND MODELS**



NOW  
\$48,995

2015 CHEVY SUBURBAN LT 4x4, leather, #7666A



NOW  
\$34,995

2012 CHEVY TAHOE LTZ 4x4, sunroof, NAV, rear entertainment, leather #7229A



NOW  
\$21,795

2016 CHEVY TRAX LT 4x4, PW, PL, tilt, cruise #12529



NOW  
\$20,995

2014 CHEVY SILVERADO REG CAB 4x4, auto, Tranny #12547A



NOW  
\$31,995

2015 GMC CANYON 4x4, Ext Cab, 5500 miles, loaded #12535



NOW  
\$24,995

2015 FORD TRANSIT VAN 350 15 passenger seating, 27K miles #12522

**ATTENTION CHURCHES**



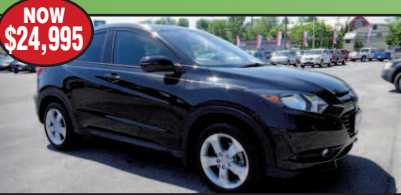
NOW  
\$38,995

2016 CHEVY COLORADO Crew Cab Z71 4x4, Durmax diesel, NAV, p/seat #0125



NOW  
\$21,995

2014 SUBARU CROSSTREK XV AWD only 37,000 miles. Super nice. ~~WAS \$23,995~~



NOW  
\$24,995

2016 HONDA HR-V AWD, EX, 19K miles, sunroof, loaded #12504AA



NOW  
\$19,995

2012 TOYOTA RAV4 AWD Limited, V6, all power, 1 owner #12535 ~~WAS \$20,995~~



NOW  
\$31,995

2013 HONDA RIDGELINE 4WD, Crew Cab RT, 32k miles, auto, NAV, sunroof #12560



NOW  
\$23,995

2015 MAZDA CX-5 AWD, Touring, 15K miles, leather sunroof #7399A



NOW  
\$32,900

2015 JEEP WRANGLER UNLIMITED 4WD, 28K miles, soft top, #12573



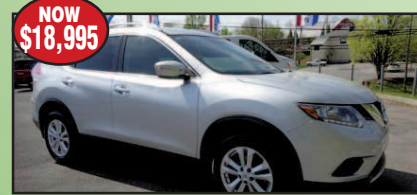
NOW  
\$29,995

2013 TOYOTA 4RUNNER 4WD, V6, 3rd row seating, loaded #12539



NOW  
\$16,995

2014 MITSUBISHI OUTLANDER SPORT AWD, ES, 42K, auto, sunroof, #12534



NOW  
\$18,995

2014 NISSAN ROGUE AWD SV, 47K miles, auto, leather, sunroof #12544



**NEW 2017 GMC  
Sierra 1500 SLE**

#18864, Double cab, 4x4

\*Price listed are after all factory rebates & dealer incentives

**SALE  
PRICE**  
**\$46,170\***

## Military Appreciation Month!



**NEW 2017 GMC  
Terrain AWD SLE 1**

#18829

\*Price listed are after all factory rebates & dealer incentives

MSRP \$30,175  
**SALE PRICE**  
**\$29,175\***



**NEW 2017 GMC  
Yukon Denali 4WD**

#18860, 4 door

\*Price listed are after all factory rebates & dealer incentives

**SALE  
PRICE**  
**\$76,385\***



**NEW 2017 GMC  
Sierra 1500 4WD**

#18941, Crew cab, SLT Premium Plus Pkg

\*Price listed are after all factory rebates & dealer incentives

**SALE  
PRICE**  
**\$54,630\***



WE ARE PROFESSIONAL GRADE

**\$14,995\***



**2011 Toyota Avalon**

#18752A

**\$24,995\***



**2014 Cadillac ATS AWD**

#6607, Loaded

**\$38,995\***



**2010 Chevy Corvette**

#18661A, 18K, Automatic

**\$CALL!**



**2015 Dodge Challenger**

#6631

**\$29,995\***



**2016 Honda CRV**

#18532B

**\$12,995\***



**2013 Buick Verano**

#6444, Loaded, Leather

**\$8,995\***



**2007 Camry Solara**

#18785C, SLE

**\$7,500\***



**2011 Nissan Sentra**

stk# 18629A

# MORGAN - McCLURE

US HIGHWAY 58, CASTLEWOOD, VA

VADLR

**(276) 762-2311 • 1-800-834-3325 • [morganmcclureauto.com](http://morganmcclureauto.com)**

\*PRICES LISTED AFTER ALL FACTORY REBATES & DEALER INCENTIVES. PRICES DO NOT INCLUDE TAXES, TITLE, OR TAG FEES. NO PROCESSING FEE. SUBJECT TO PRIOR SALE. WITH APPROVED CREDIT. OFFER ENDS 6/30/17. NOT ALL WILL QUALIFY. PHOTOS ARE FOR AD PURPOSES ONLY AND MAY NOT BE ACTUAL PHOTO.



**NEW 2017 Chevy  
Equinox AWD LT**  
#18903

MSRP \$33,620

**SALE PRICE**  
**\$27,905\***

\*Price listed are after all factory rebates &amp; dealer incentives



**NEW 2017 Chevy  
Equinox AWD LT**  
#18919

MSRP \$33,720

**SALE PRICE**  
**\$27,988\***

\*Price listed are after all factory rebates &amp; dealer incentives



**NEW 2017 Chevy  
Silverado 1500 LT**  
#18779 4WD, Z71, Allstar Ed., Crew

MSRP \$48,240

**SALE PRICE**  
**\$40,039\***

\*Price listed are after all factory rebates &amp; dealer incentives



**NEW 2017 Chevy  
Silverado 2500 HD**  
#18935, 4WD, LT, Allstar Ed., Crew

MSRP \$52,815

**SALE PRICE**  
**\$47,533\***

\*Price listed are after all factory rebates &amp; dealer incentives



**NEW 2017 Chevy  
Silverado 1500 LT**  
#18768, 4WD, Z71, Allstar Ed., Crew

MSRP \$48,040

**SALE PRICE**  
**\$39,873\***

\*Price listed are after all factory rebates &amp; dealer incentives



**NEW 2017 Chevy  
Silverado 1500 LT**  
#18911, 4WD, Z71, Allstar Ed., Crew

MSRP \$49,055

**SALE PRICE**  
**\$40,716\***

\*Price listed are after all factory rebates &amp; dealer incentives



**FIND NEW ROADS™**

**CHEVROLET**

**\$31,995\***



**2015 Toyota Highlander**  
#18813A

**\$47,995\***



**2017 Ford F250 4x4**  
#6618, Diesel, Crew cab, 16K miles

**\$16,995\***



**2005 Silverado 1500**  
#18633A, Off Road, Z71, 4x4, Crew, Auto

**\$9,995\***



**2004 Ford Ranger**  
#6596

**\$22,995\***



**2013 Chevy Traverse**  
#18584A, AWD, low miles, leather, backup camera

**\$26,995\***



**2010 GMC Yukon**  
#6560A

**\$7,995\***



**2006 Trailblazer 4x4**  
#18837B

**\$8,995\***



**2010 Dodge Caravan**  
#18217C

**MORGAN - McCLURE**

**US HIGHWAY 58, CASTLEWOOD, VA**

VADLR

**(276) 762-2311 • 1-800-834-3325 • [morganmcclureauto.com](http://morganmcclureauto.com)**

\*PRICES LISTED AFTER ALL FACTORY REBATES & DEALER INCENTIVES. PRICES DO NOT INCLUDE TAXES, TITLE, OR TAG FEES. NO PROCESSING FEE. SUBJECT TO PRIOR SALE. WITH APPROVED CREDIT. OFFER ENDS 6/30/17. NOT ALL WILL QUALIFY. PHOTOS ARE FOR AD PURPOSES ONLY AND MAY NOT BE ACTUAL PHOTO.