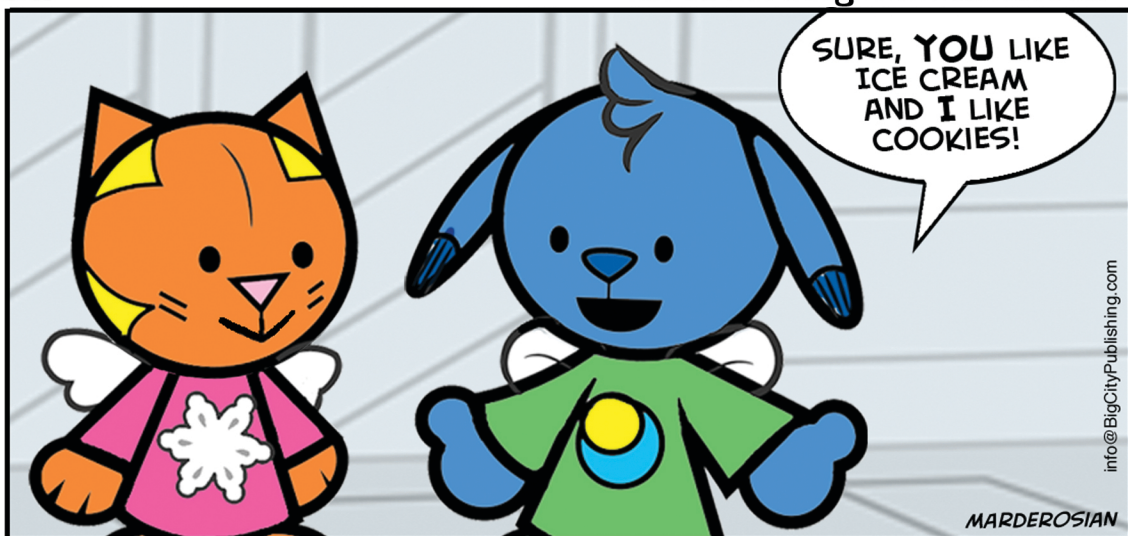
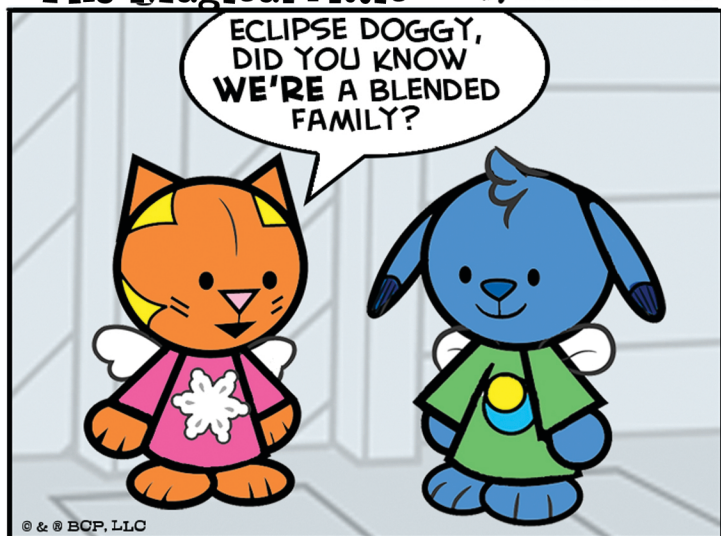


The Magical Attic by Mark Marderosian

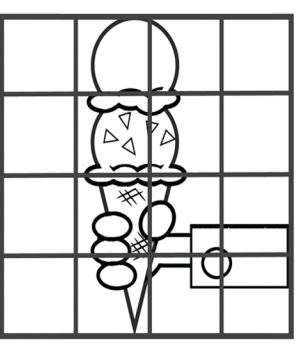
www.TheMagicalAttic.com




Drawing with Mark

LET'S DRAW AN ICE CREAM CONE!

Get a pencil and use the grid below to draw the Ice Cream Cone as shown on left. The grids will help you to line everything up!

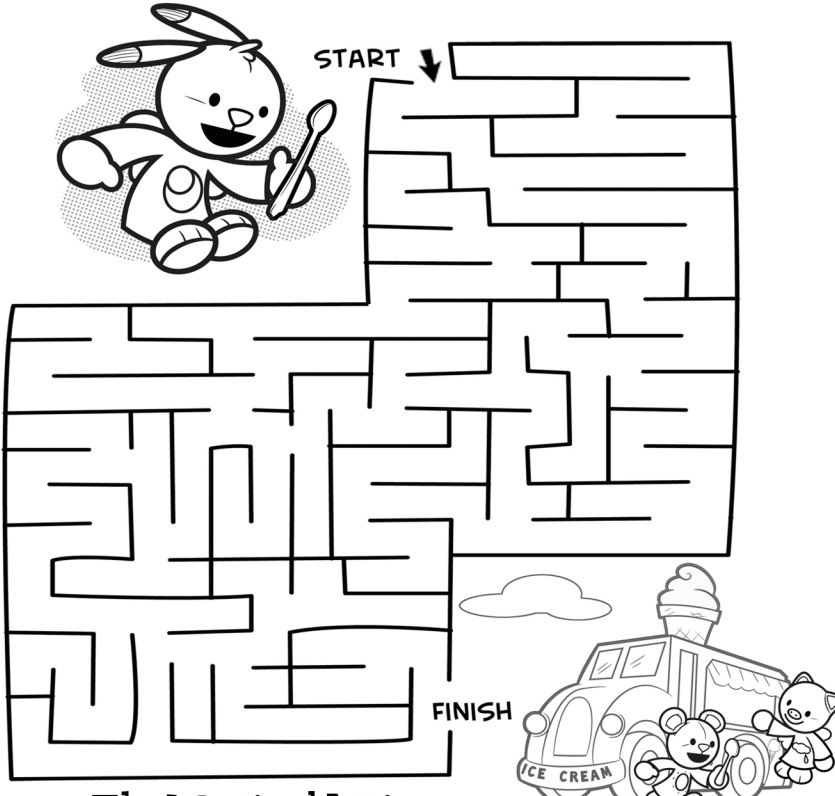


You can put a new piece of blank paper over the grid & start again.



www.DrawingWithMark.com

Help Eclipse Doggy reach the Ice Cream Truck!



START

FINISH

www.TheMagicalAttic.com

drawing with mark

LET'S DRAW AN ICE CREAM CONE!

Get some paper, pencils or crayons and let's practice Drawing with Mark!

Let's start with two circles and triangle.

These are the "foundation" lines.

Add ovals for the ice cream and basic shapes for the hand.

A simple tube and oval to start

Add thumb and fingers. Draw them right through the cone's lines.

Decorate the ice cream any way you'd like!

When you erase the foundation lines, the drawing is more accurate:

It really looks like the hand is really holding the cone!

And the lines of the cone "line" up and match because you "drew through" the hand at the start.

FOR MORE DRAWING WITH MARK, VISIT WWW.DRAWINGWITHMARK.COM - DVDS AVAILABLE ON AMAZON.COM

The Magical Attic

FUN FACTS!

- THE AVERAGE AMERICAN EATS ALMOST 22 POUNDS OF ICE CREAM PER YEAR.
- IN THE 1300'S MARCO POLO, BROUGHT AN EARLY VERSION OF ICE CREAM TO EUROPE.
- AMERICA'S FIRST ICE CREAM PARLOR OPENED ITS DOORS IN 1776.
- IN THE 1880'S, THE ICE CREAM SUNDAE IS INVENTED. YUM!



ALL NEW! The Magical Attic COLORING & ACTIVITY BOOKS!



Let's Play Outside! A Fun Day

64-PAGES EACH FOR HOURS OF FUN!

The Magical Attic / available on Amazon!

drawing with mark

LET'S DRAW AN ICE CREAM TRUCK!

Get some paper, pencils or crayons and let's practice Drawing with Mark!

We'll start with boxes to put our truck in PERSPECTIVE and make it seem like it's driving towards us.

Using the front box, we can curve the front of the truck.

Now we can add vertical lines for the door and window too, with an awning above.

By adding curved lines to the tires, they look like they're in perspective too!

Now we can add more detail like a horn on top and a fun giant cone!

The box shapes we started with are erased but they were a great foundation to build our drawing on. Use boxes to draw any kind of truck you want!

FOR MORE DRAWING WITH MARK, VISIT WWW.DRAWINGWITHMARK.COM