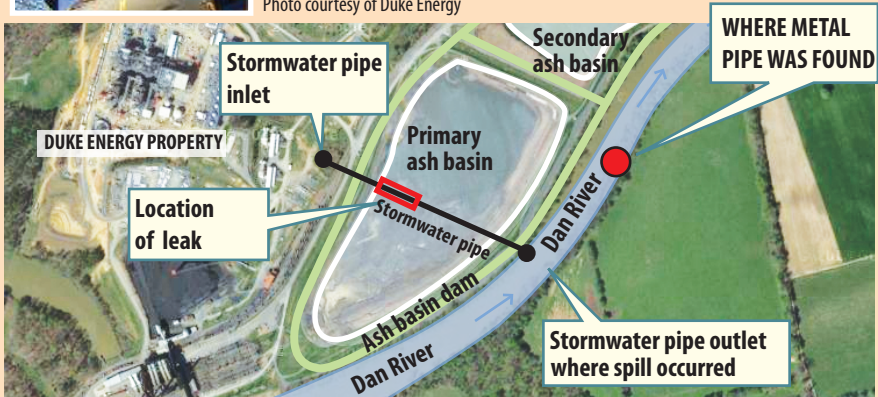




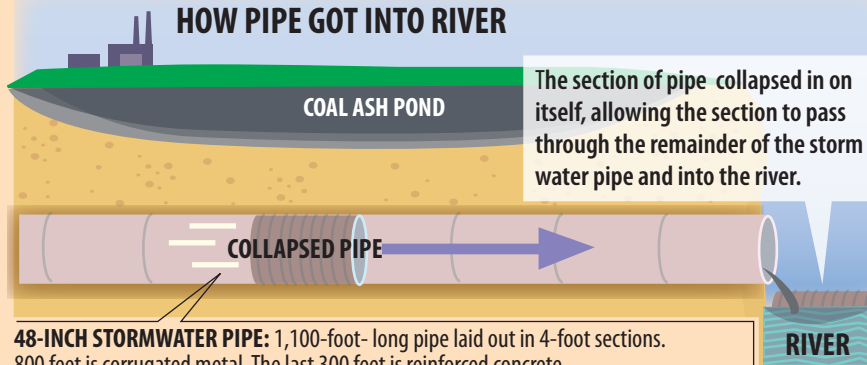
DUKE POWER RECOVERS SECTION OF PIPE

Workers with Duke Energy found a submerged, missing piece of the metal pipe that failed Feb. 2, spewing thousands of tons of coal ash into the Dan River.

Photo courtesy of Duke Energy



HOW PIPE GOT INTO RIVER



48-INCH STORMWATER PIPE: 1,100-foot- long pipe laid out in 4-foot sections. 800 feet is corrugated metal. The last 300 feet is reinforced concrete.