
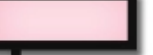





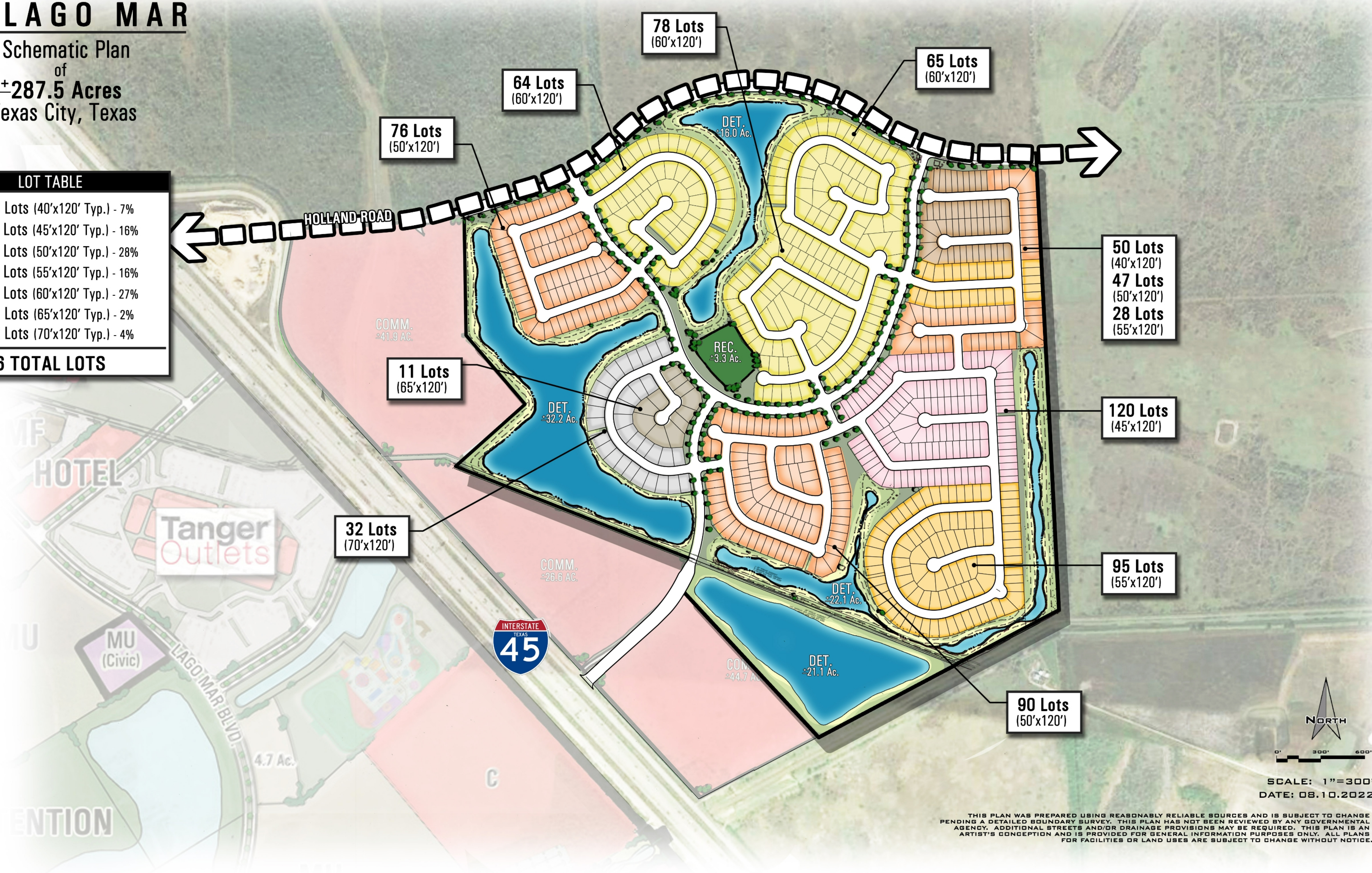


# BEACON POINT AT LAGO MAR

A Schematic Plan  
of  
±287.5 Acres  
Texas City, Texas

LOT TABLE	
	50 Lots (40'x120' Typ.) - 7%
	120 Lots (45'x120' Typ.) - 16%
	213 Lots (50'x120' Typ.) - 28%
	123 Lots (55'x120' Typ.) - 16%
	207 Lots (60'x120' Typ.) - 27%
	11 Lots (65'x120' Typ.) - 2%
	32 Lots (70'x120' Typ.) - 4%
756 TOTAL LOTS	



NORTH

0' 300' 600'

SCALE: 1"=300'

DATE: 08.10.2022

THIS PLAN WAS PREPARED USING REASONABLY RELIABLE SOURCES AND IS SUBJECT TO CHANGE PENDING A DETAILED BOUNDARY SURVEY. THIS PLAN HAS NOT BEEN REVIEWED BY ANY GOVERNMENTAL AGENCY. ADDITIONAL STREETS AND/OR DRAINAGE PROVISIONS MAY BE REQUIRED. THIS PLAN IS AN ARTIST'S CONCEPTION AND IS PROVIDED FOR GENERAL INFORMATION PURPOSES ONLY. ALL PLANS FOR FACILITIES OR LAND USES ARE SUBJECT TO CHANGE WITHOUT NOTICE.