

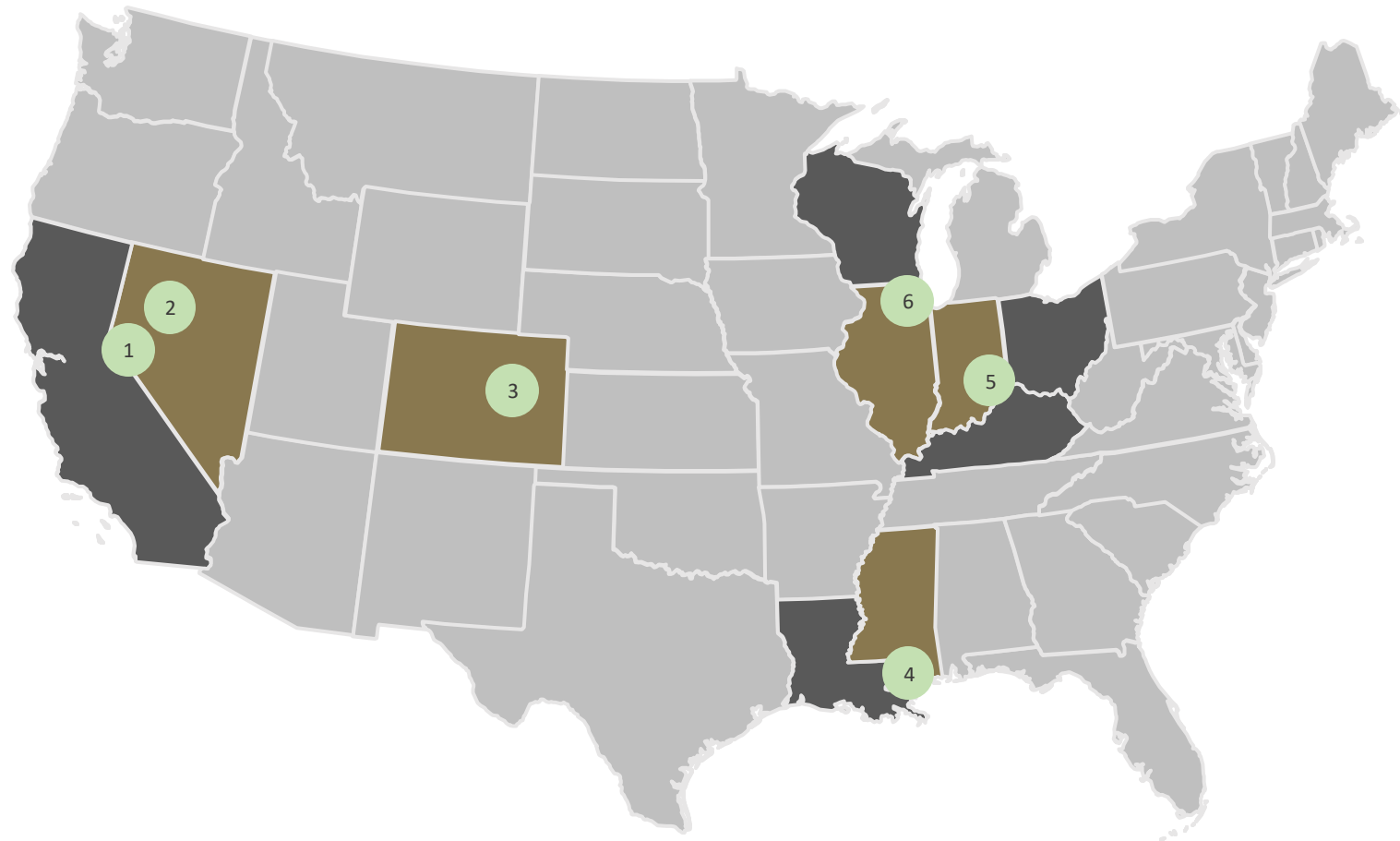


FULL HOUSE
RESORTS

New Haven, Indiana
Information Forum

September 23, 2024

- 1 Grand Lodge Casino**
Incline Village, Nevada (North Lake Tahoe)
- 2 Stockman's Casino**
Fallon, NV (Near Reno and Navy Air Station: Fallon)
- 3 Bronco Billy's / Chamonix Casino Hotel**
Cripple Creek, CO (Near Colorado Springs)
- 4 Silver Slipper**
Hancock County, MS (Near New Orleans)
- 5 Rising Star Casino Resort**
Rising Sun, IN (Near Cincinnati / Louisville / Indianapolis)
- 6 American Place**
Waukegan, IL (Northern Chicago suburb, Also Near Milwaukee)



Chamonix: First Luxury Gaming Product in Cripple Creek



Chamonix: Main Arrival



Chamonix: Casino Arrival



Chamonix: Hotel Lobby



Chamonix: Table Games Pit





Chamonix: Casino



Chamonix: Meeting Space



Chamonix: Meeting Space

Chamonix: Guestroom



Chamonix: Guestroom



Chamonix: View from Suite

13



American Place





American Place: Arrival



American Place: Atrium

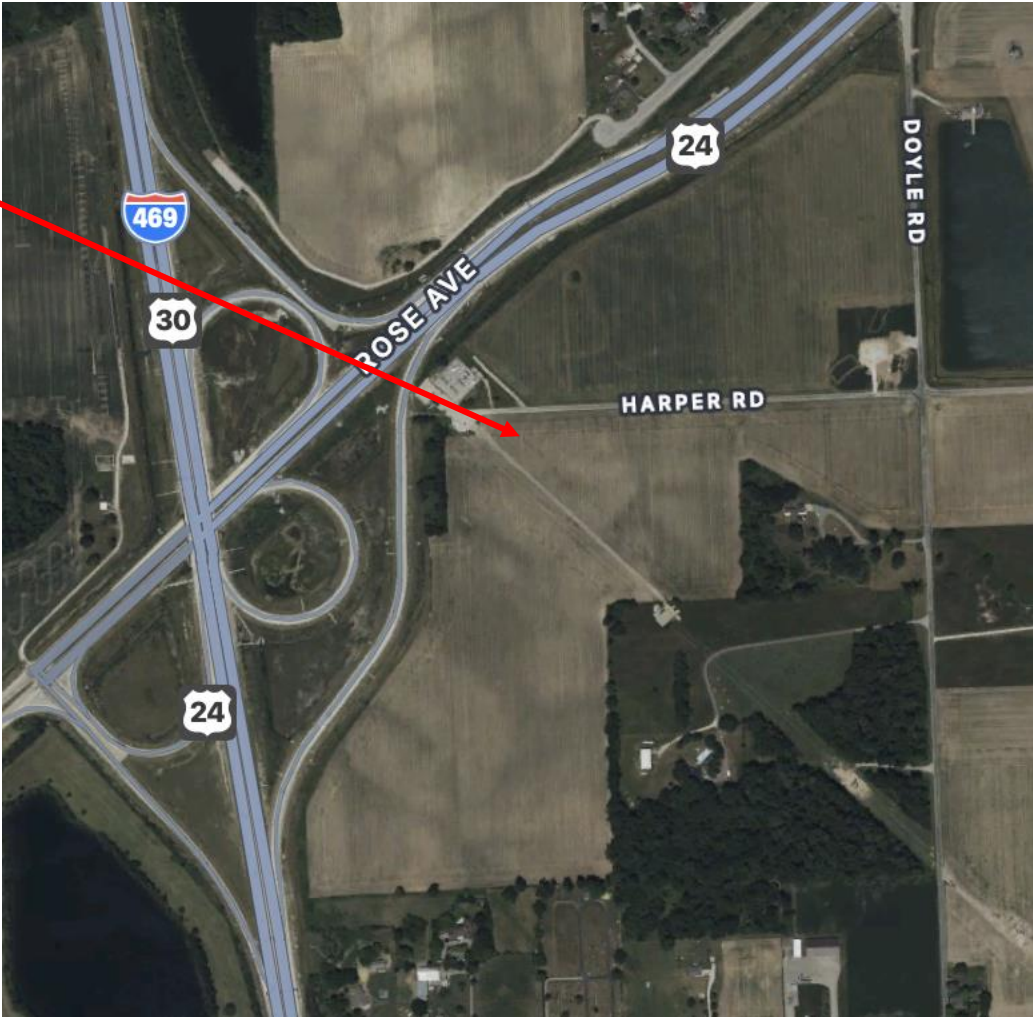
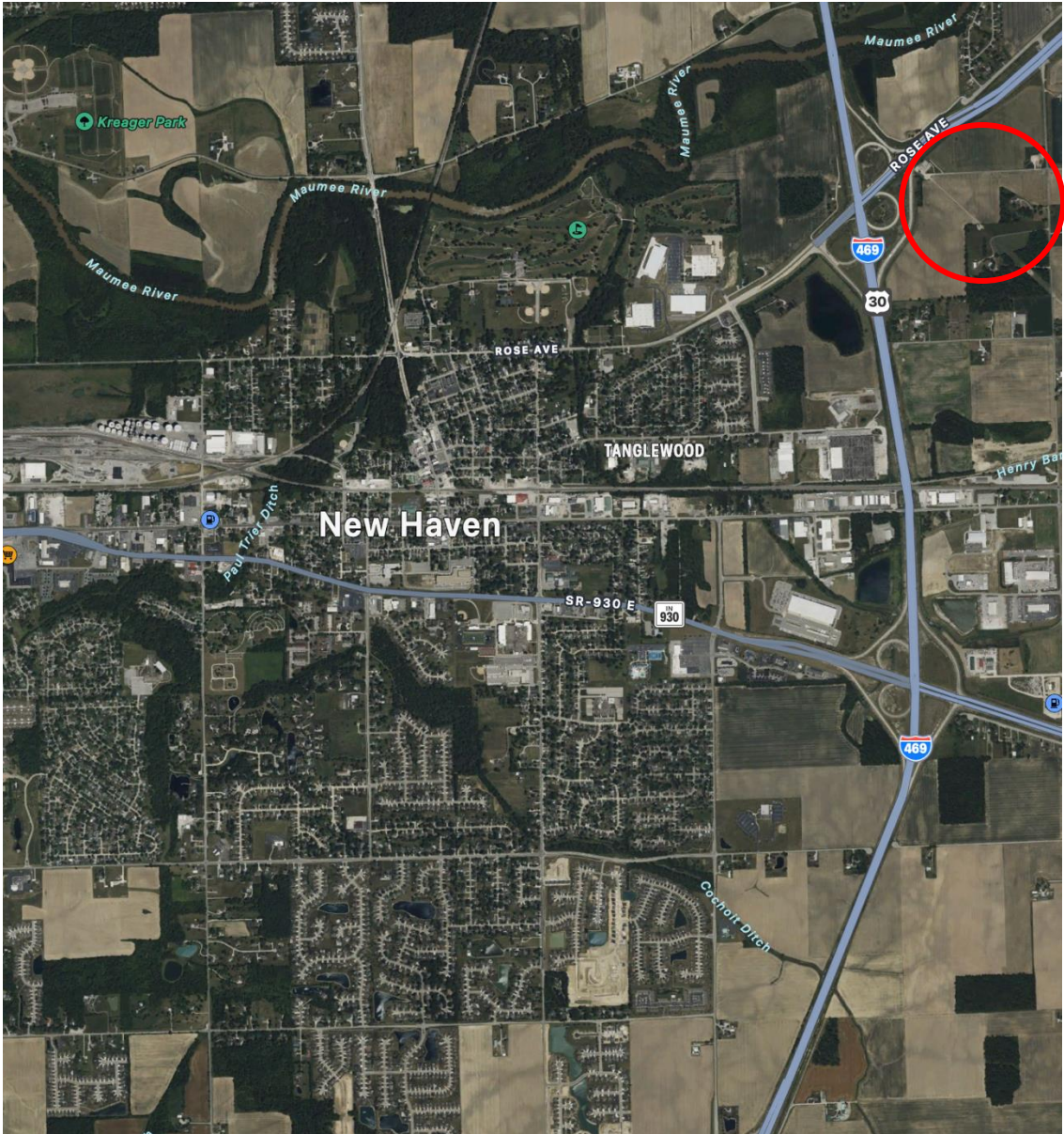


American Place: Casino

American Place: The Mansion



New Haven Casino - Location



PHASE 1

- Minimum Investment: \$250M
- Modern Casino With Slot Machines, Table Games, and State-of-the-art Sportsbook
- Prime Steakhouse
- Celebrity-chef Upscale Casual Restaurant
- Food Hall (local proprietors)
- Entertainment Lounge
- High-Energy Center Bar
- Speakeasy Cocktail Bar

PHASE 2

- Additional Minimum Investment: \$250M
- 200-room Luxury Hotel
- Premium Spa and Salon
- Live Event / Concert Venue
- Additional Dining & Entertainment Venues

The \$500 Million Development is designed to be a regional entertainment destination, appealing to both gamers and non-gamers.

Economic impact to Indiana – construction phase (for each of Phases I and II)

Phase I	Total Output (\$mm)	Wages (\$mm)	Employment
Direct/Indirect	415.5	120.0	1,859
Induced	147.5	42.3	901
Total	563.0	162.3	2,760
Phase II			
Direct/Indirect	415.5	120.0	1,859
Induced	147.5	42.3	901
Total	563.0	162.3	2,760
Full build out			
Direct/Indirect	831.0	240.0	3,717
Induced	294.9	84.6	1,803
Total	1,125.9	324.6	5,520

- Deep history supporting local charities and causes
- Vendor opportunities during construction and ongoing operations
 - Local vendor fairs to promote local contracting
- Stellar employer track record
 - Local job fairs to promote local hiring
 - High retention rates
 - Career development
 - Benefits: medical, dental, and vision coverages
 - 401(K) employer match
 - Employee Assistance Program
 - Health and wellness fairs
 - Employee discount partnerships with local businesses
 - Paid time off

New Haven Casino – Operations Economic Impact

Phase I	Total Output (\$mm)	Wages (\$mm)	Employment
Direct	243.9	62.0	1,242
Indirect	96.9	33.6	539
Induced	102.1	33.7	646
Total	442.8	129.4	2,426

Phase II (incremental benefit)			
Direct	69.9	11.8	237
Indirect	27.8	6.4	103
Induced	29.2	6.4	123
Total	126.9	24.7	463

Full build out			
Direct	313.7	73.9	1,480
Indirect	124.7	40.1	641
Induced	131.3	40.2	769
Total	569.7	154.2	2,890

New Haven Casino – Gaming and Property Taxes

24

Gaming revenue	Year 1	Year 2	Year 3	Year 4	Year 5
GGR	206.0	230.2	242.4	280.3	288.7
Promo tax allowance	-9.0	-9.0	-9.0	-9.0	-9.0
AGR after promo tax allowance	197.0	221.2	233.4	271.3	279.7
Graduated wagering tax					
State	39.5	45.9	49.1	59.0	61.2
City	13.2	15.3	16.4	19.7	20.4
Total	52.7	61.2	65.4	78.7	81.7

Casino Development Property Taxes:

	Phase 1	Phase 2	TOTAL
Allen County	814,170	814,170	1,628,340
Jefferson Township	54,278	54,278	108,556
New Haven	1,791,174	1,791,174	3,582,348
East Allen County Schools	1,736,896	1,736,896	3,473,792
Allen County Public Library	271,390	271,390	542,780
Allen County Airport	54,278	54,278	108,556
Public Transit	108,556	108,556	217,112
East Central Fire Department	597,058	597,058	1,194,116
	5,427,800	5,427,800	10,855,600

Tax Revenue Benefits

- 20% of the local taxes will go to Homestead Property Tax Rebates.
- 20% will go to a Public Health & Safety Commission.