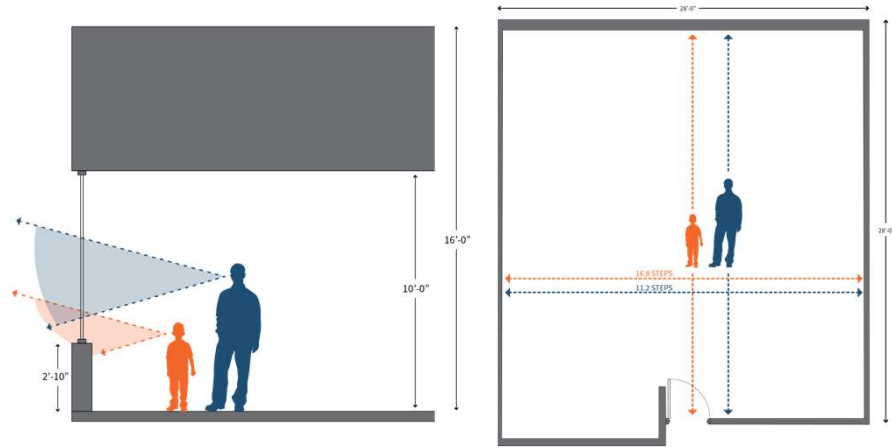


PROJECT GOALS | OBJECTIVES

- Establish regularity; promote flexibility.
- Emphasize standardization.
- Ease site adaptability.
- Pursue a **compact footprint**.
- Utilize cost-effective solutions.
- Maximize durability and sustainability.

DECISION POINTS

- Functionality
- Cost | Constructability
- Site
 - Phased Demolition
- Environmental | LEED
- Aesthetics | **Proportion**



FCPS WAVERLEY ES: SCHEMATIC DESIGN
April 10, 2019

ARCHITECTS G|W
W|O © 2019

WHAT IS THE BASIS OF THE NEW “PROTOTYPE”?

modularity

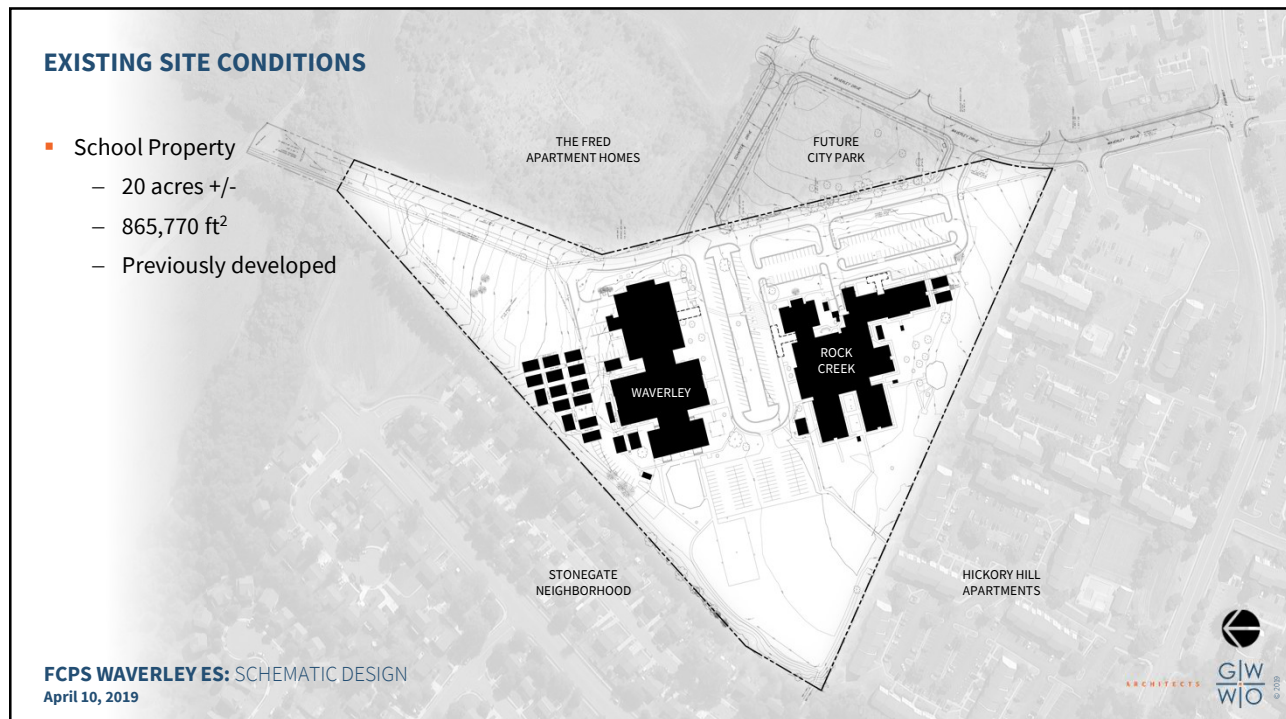
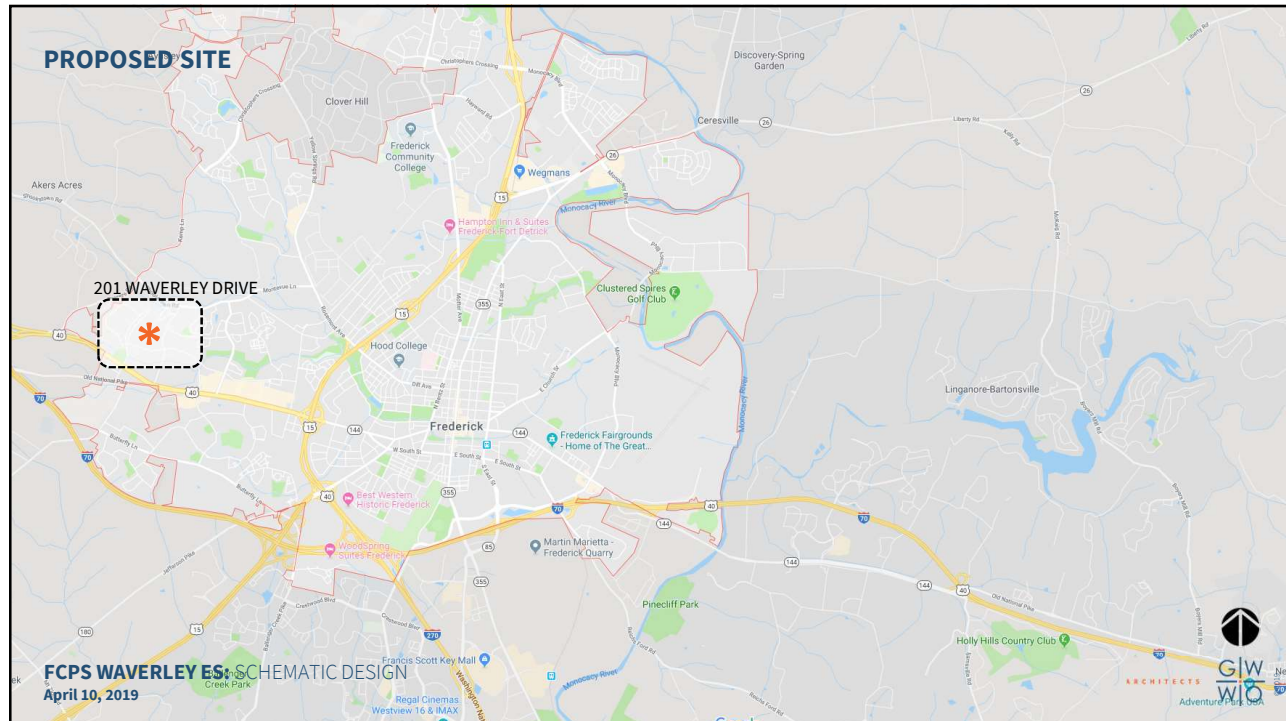
- of, relating to, or based on a module or a modulus
- **constructed with standardized units or dimensions for flexibility and variety in use**



UMYD Modular Table, Cruxflux

FCPS WAVERLEY ES: SCHEMATIC DESIGN
April 10, 2019

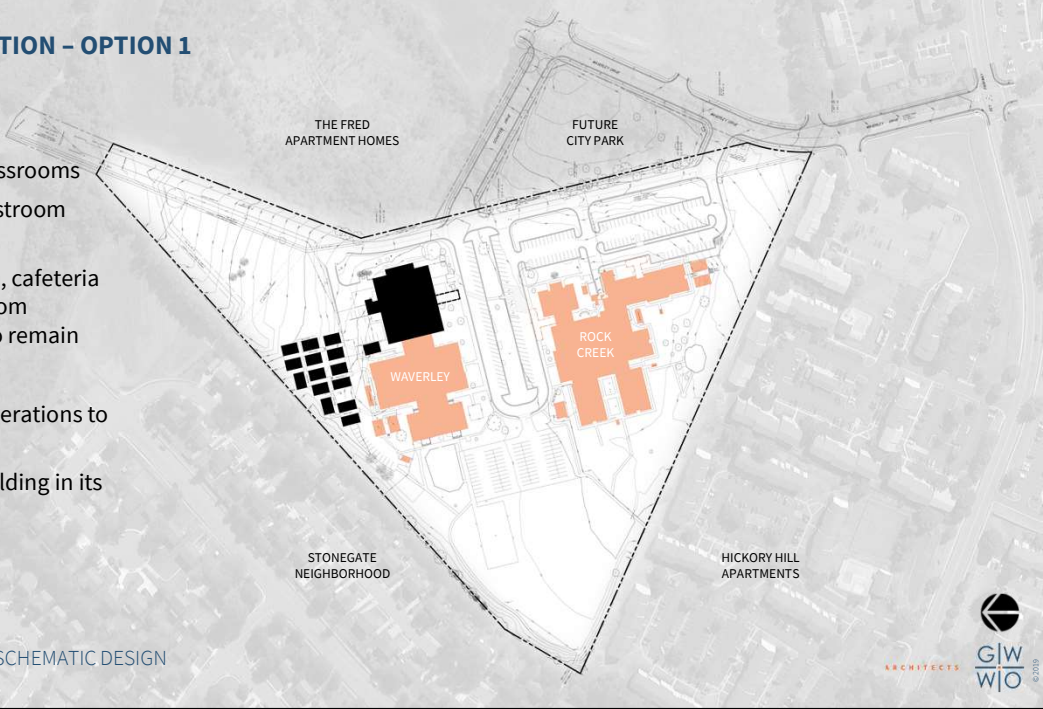
ARCHITECTS G|W
W|O © 2019



PHASE 1 DEMOLITION – OPTION 1

- Waverley ES
 - Remove classrooms
 - Relocate restroom portable(s)
 - Gymnasium, cafeteria and classroom portables to remain
- Rock Creek ES
 - Relocate operations to new facility
 - Remove building in its entirety

FCPS WAVERLEY ES: SCHEMATIC DESIGN
April 10, 2019



PHASE 1 DEMOLITION – OPTION 2

- Waverley ES
 - Classrooms, gymnasium, cafeteria and portables to remain
- Rock Creek ES
 - Relocate operations to new facility
 - Remove building in its entirety

FCPS WAVERLEY ES: SCHEMATIC DESIGN
April 10, 2019



PROPOSED SITE PLAN - OPTION 1

- Three (3) play areas
- One (1) 240' x 150' playing field
- Parking
 - 142 car spaces
 - 7 bus spaces
- Drop-off Queuing
 - 33 spaces

FCPS WAVERLEY ES: SCHEMATIC DESIGN
April 10, 2019

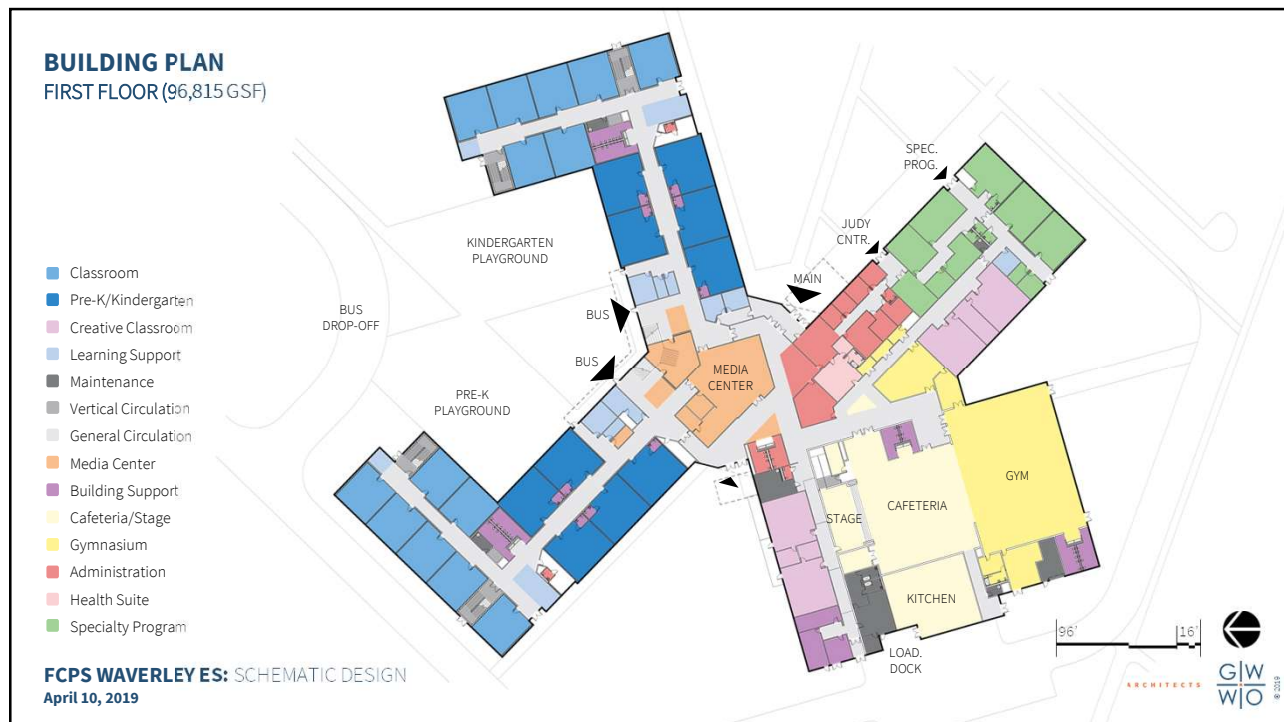


PROPOSED SITE PLAN - OPTION 2

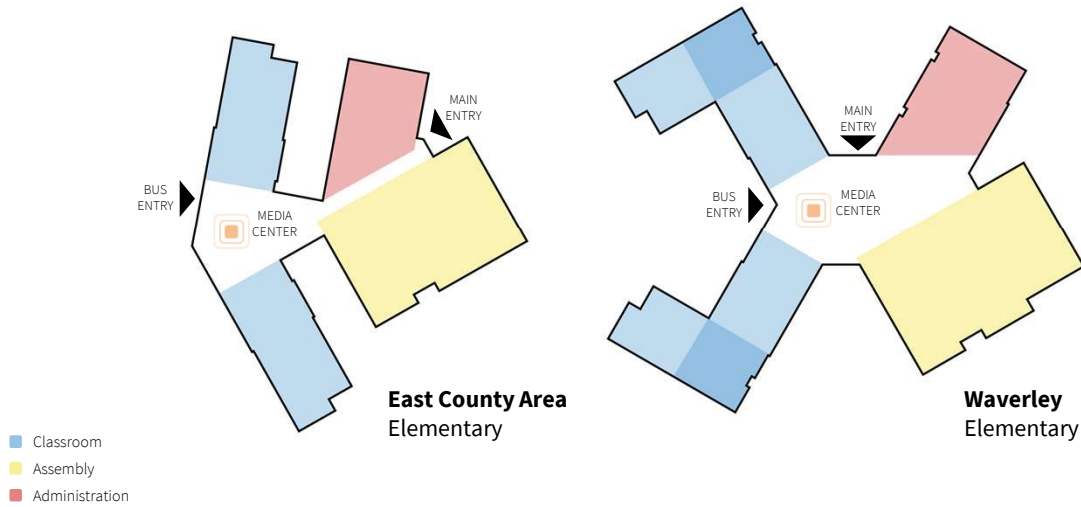
- Three (3) play areas
- One (1) 240' x 150' playing field
- Parking
 - 152 car spaces
 - 7 bus spaces
- Drop-off Queuing
 - 20 spaces

FCPS WAVERLEY ES: SCHEMATIC DESIGN
April 10, 2019





“PROTOTYPE” TRANSLATION COMPONENTS



FCPS WAVERLEY ES: SCHEMATIC DESIGN
April 10, 2019

ARCHITECTS **GLW**
WJO
© 2019

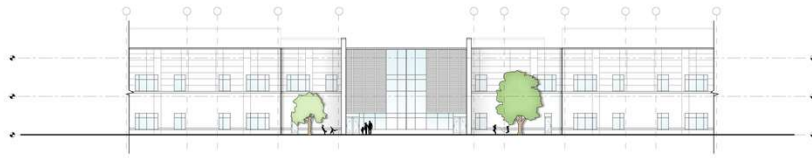
BUILDING PROGRAM

- Total Building Area
 - **136,725 GSF** (Ed Spec-128,465 GSF)
- Total Programmed Area
 - **92,823 NSF** (Ed Spec-91,761 NSF)
- Grossing Factor
 - **1.47** (Ed Spec-1.4)
- Net/Gross Efficiency
 - **67.8%** (Ed Spec-71.4%)

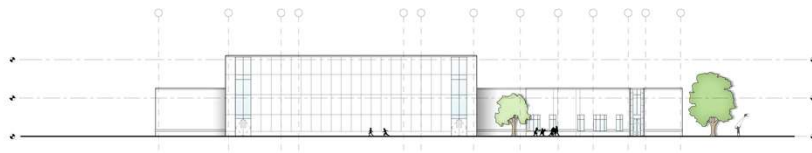
FCPS WAVERLEY ES: SCHEMATIC DESIGN
April 10, 2019

ARCHITECTS **GLW**
WJO
© 2019

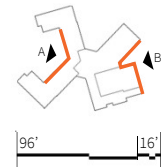
BUILDING ELEVATIONS



ELEVATION "A"

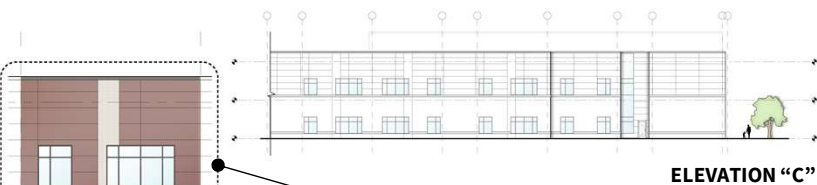


ELEVATION "B"



FCPS WAVERLEY ES: SCHEMATIC DESIGN
April 10, 2019

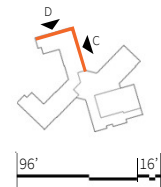
BUILDING ELEVATIONS



ELEVATION "C"



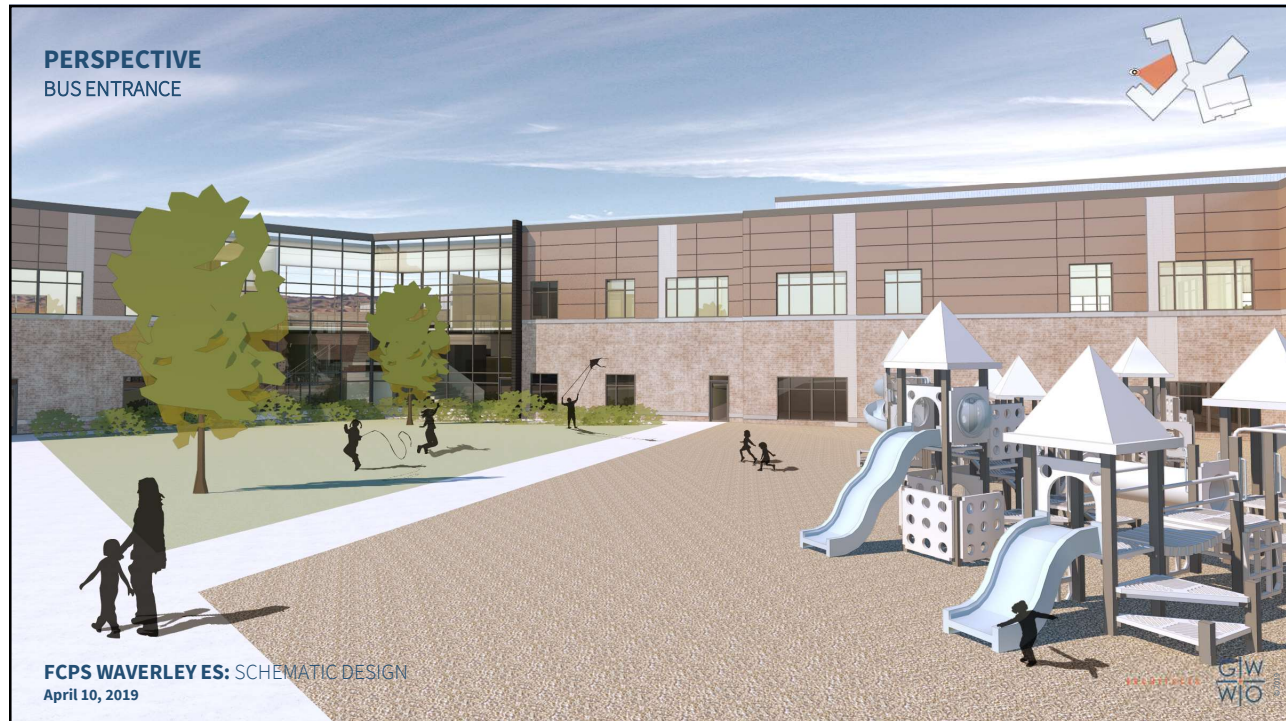
ELEVATION "D"



FCPS WAVERLEY ES: SCHEMATIC DESIGN
April 10, 2019





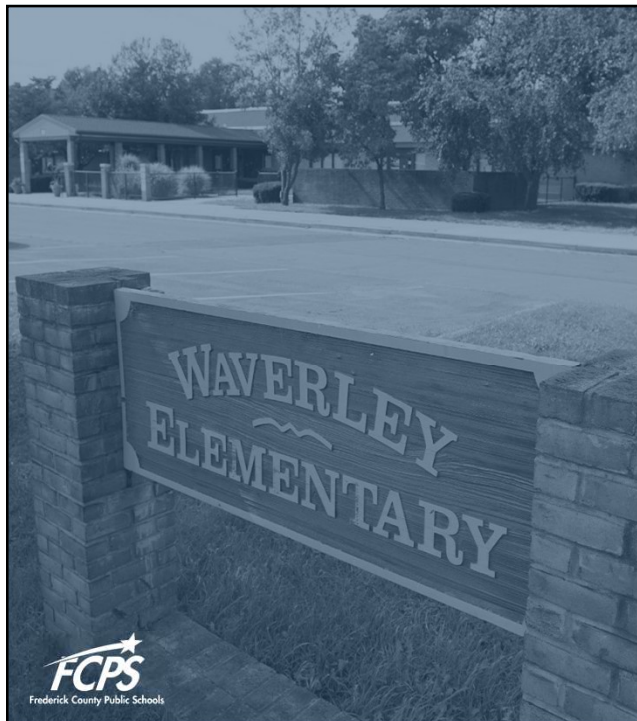


PROJECT SCHEDULE

PHASE	DURATION
Design Development	April 2019 – October 2019
Construction Documents	October 2019 – May 2020
Issued for Bid	July 2020
Contracts/Construction	November 2020 – August 2022
Student Occupancy	September 2022

FCPS WAVERLEY ES: SCHEMATIC DESIGN
April 10, 2019

ARCHITECTS **GLW**
WJO
© 2019



QUESTIONS?

ARCHITECTS **GIW**
WIO