

PROJECT GOALS | OBJECTIVES

- Establish regularity; promote flexibility.
- Emphasize standardization.
- Ease site adaptability.
- Pursue a compact footprint.
- Utilize cost-effective solutions.
- Maximize durability and sustainability.

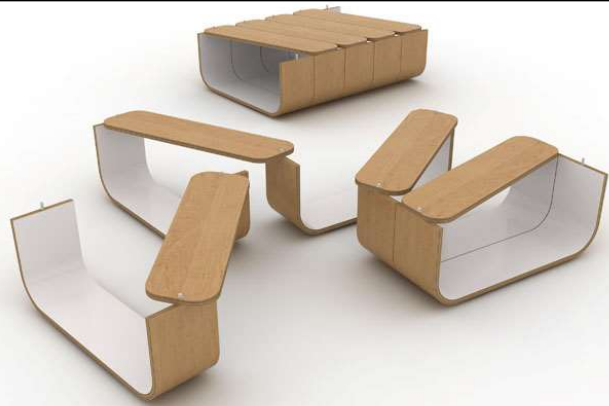
FCPS EAST COUNTY ES: SCHEMATIC DESIGN
February 27, 2019

ARCHITECTS **GLW**
W|O © 2019

WHAT IS THE BASIS OF THE NEW PROTOTYPE?

modularity

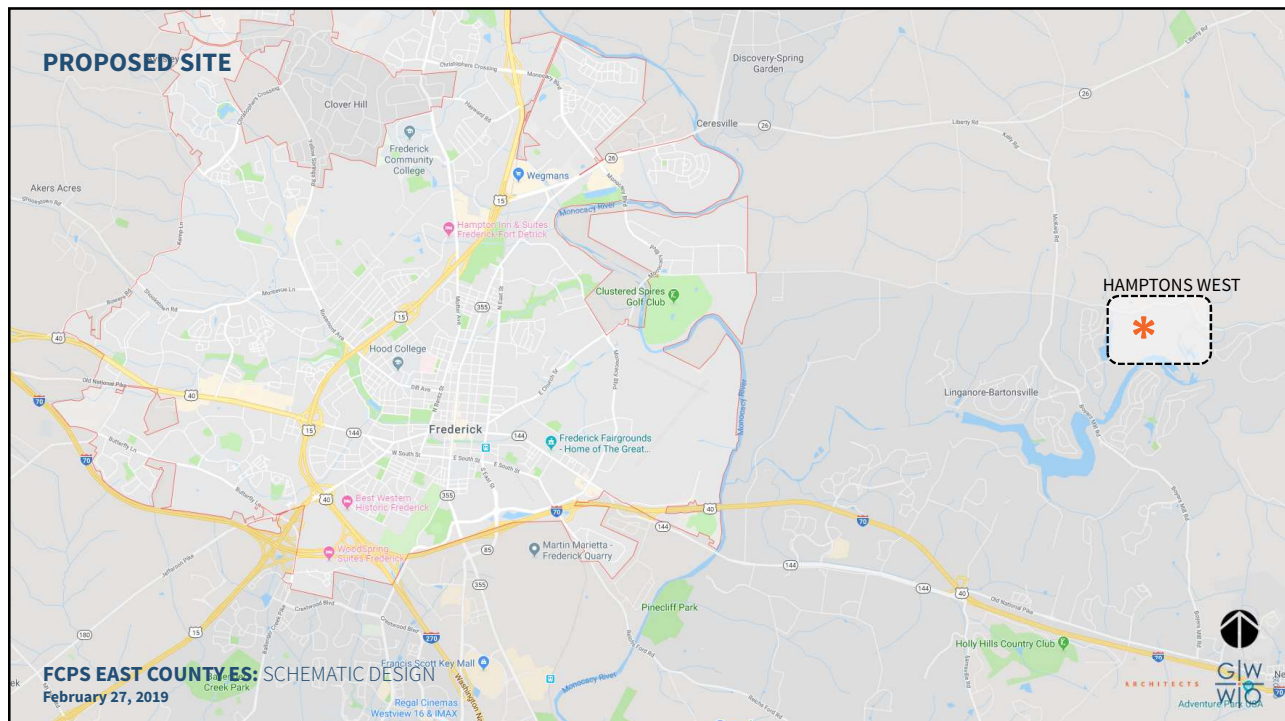
- of, relating to, or based on a module or a modulus
- **constructed with standardized units or dimensions for flexibility and variety in use**



UMYD Modular Table, Cruxflux

FCPS EAST COUNTY ES: SCHEMATIC DESIGN
February 27, 2019

ARCHITECTS **GIW**
WIO



PROPOSED SITE

- School Property
 - 15.00 acres +/-
 - 654,016 ft²
 - 1:6 slope



FCPS EAST COUNTY ES: SCHEMATIC DESIGN
February 27, 2019

Hamptons West Development site
plan provided by Harris Smariga.

ARCHITECTS



PROPOSED SITE PLAN

- Three (3) playgrounds
- One (1) 240' x 150' playing field
- Parking
 - 138 car spaces
 - 31 on-street car spaces
 - 12 bus spaces
- Drop-off Queuing
 - 38 spaces
- Three (3) "critical specimen" trees to remain



FCPS EAST COUNTY ES: SCHEMATIC DESIGN
February 27, 2019

Hamptons West Development site
plan provided by Harris Smariga.

ARCHITECTS



BUILDING PLAN

LOWER LEVEL (32,240 GSF)

- Classroom
- Pre-K/Kindergarten
- Creative Classroom
- Learning Support
- Maintenance
- Vertical Circulation
- General Circulation
- Media Center
- Building Support
- Cafeteria/Stage
- Gymnasium
- Administration
- Health Suite
- Specialty Program



FCPS EAST COUNTY ES: SCHEMATIC DESIGN
February 27, 2019

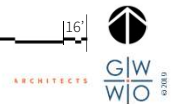
**BUILDING PLAN**

MAIN LEVEL (67,156 GSF)

- Classroom
- Pre-K/Kindergarten
- Creative Classroom
- Learning Support
- Maintenance
- Vertical Circulation
- General Circulation
- Media Center
- Building Support
- Cafeteria/Stage
- Gymnasium
- Administration
- Health Suite
- Specialty Program

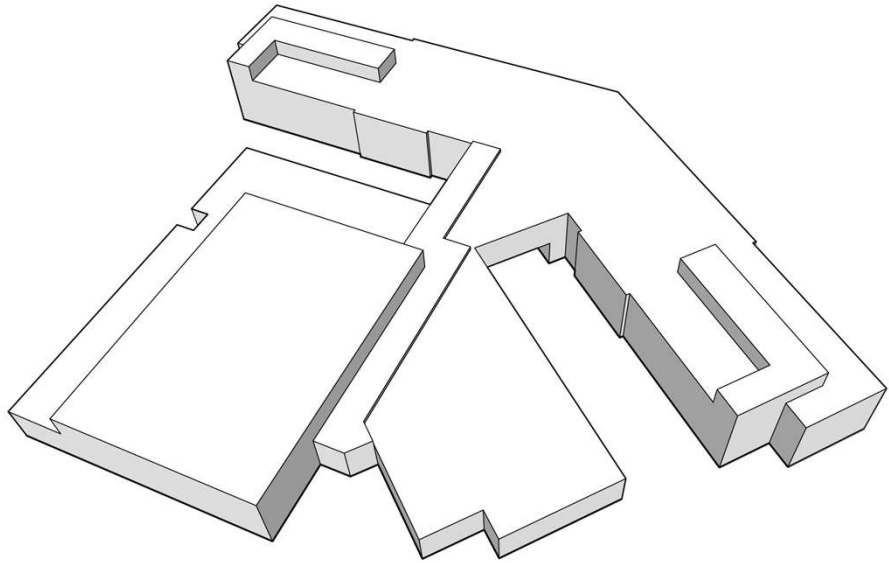


FCPS EAST COUNTY ES: SCHEMATIC DESIGN
February 27, 2019



GENERAL MASSING

- Total Gross Area
 - 99,396 GSF
- Total Net Area
 - 68,022 NSF
- Net/Gross Efficiency
 - 68.4%



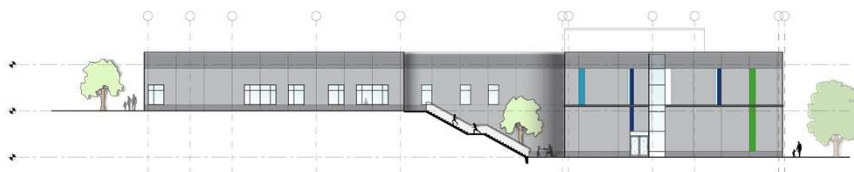
FCPS EAST COUNTY ES: SCHEMATIC DESIGN
February 27, 2019



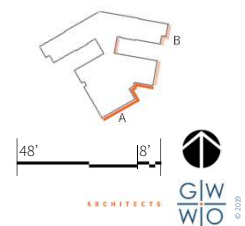
BUILDING ELEVATIONS



ELEVATION "A"



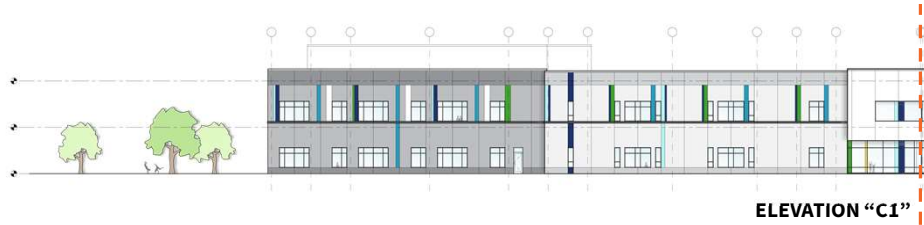
ELEVATION "B"



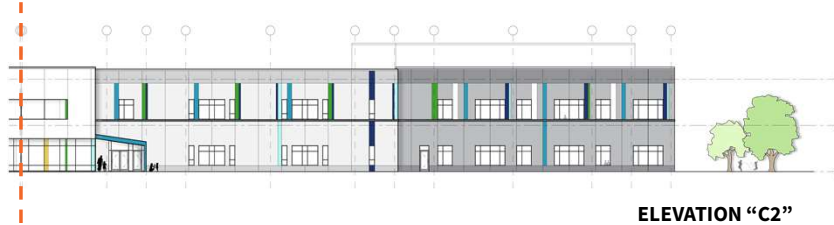
FCPS EAST COUNTY ES: SCHEMATIC DESIGN
February 27, 2019



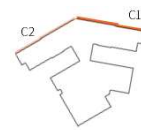
BUILDING ELEVATIONS



ELEVATION "C1"



ELEVATION "C2"



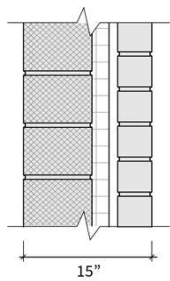
48' 8'



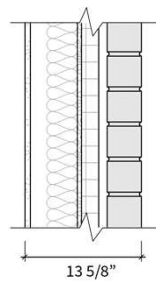
FCPS EAST COUNTY ES: SCHEMATIC DESIGN
February 27, 2019

PRECAST CONCRETE VS. MASONRY

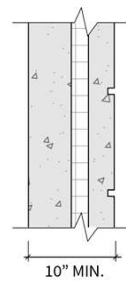
BRICK VENEER CAVITY WALL
MASONRY BACKER



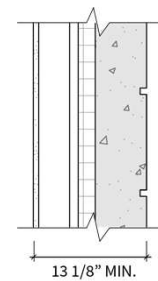
BRICK VENEER CAVITY WALL
STUD BACKER



PRECAST CONCRETE
SANDWICH PANEL



PRECAST CONCRETE
INTERIOR INSULATION



FCPS EAST COUNTY ES: SCHEMATIC DESIGN
February 27, 2019





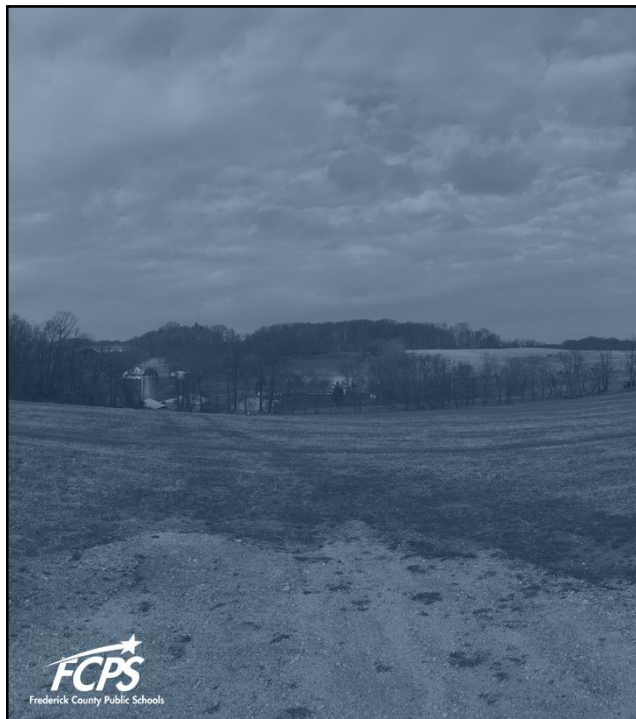
AERIAL PERSPECTIVE**PERSPECTIVE**
LOWER LEVEL – BUS ENTRANCE

PROJECT SCHEDULE

PHASE	DURATION
Design Development	February 2019 – June 2019
Construction Documents	June 2019 – November 2019
Issued for Bid	January 2020
Contracts/Construction	February 2020 – August 2021
Student Occupancy	September 2021

FCPS EAST COUNTY ES: SCHEMATIC DESIGN
February 27, 2019

ARCHITECTS **G|W**
W|O
© 2019



QUESTIONS?

ARCHITECTS **G|W**
W|O
© 2019