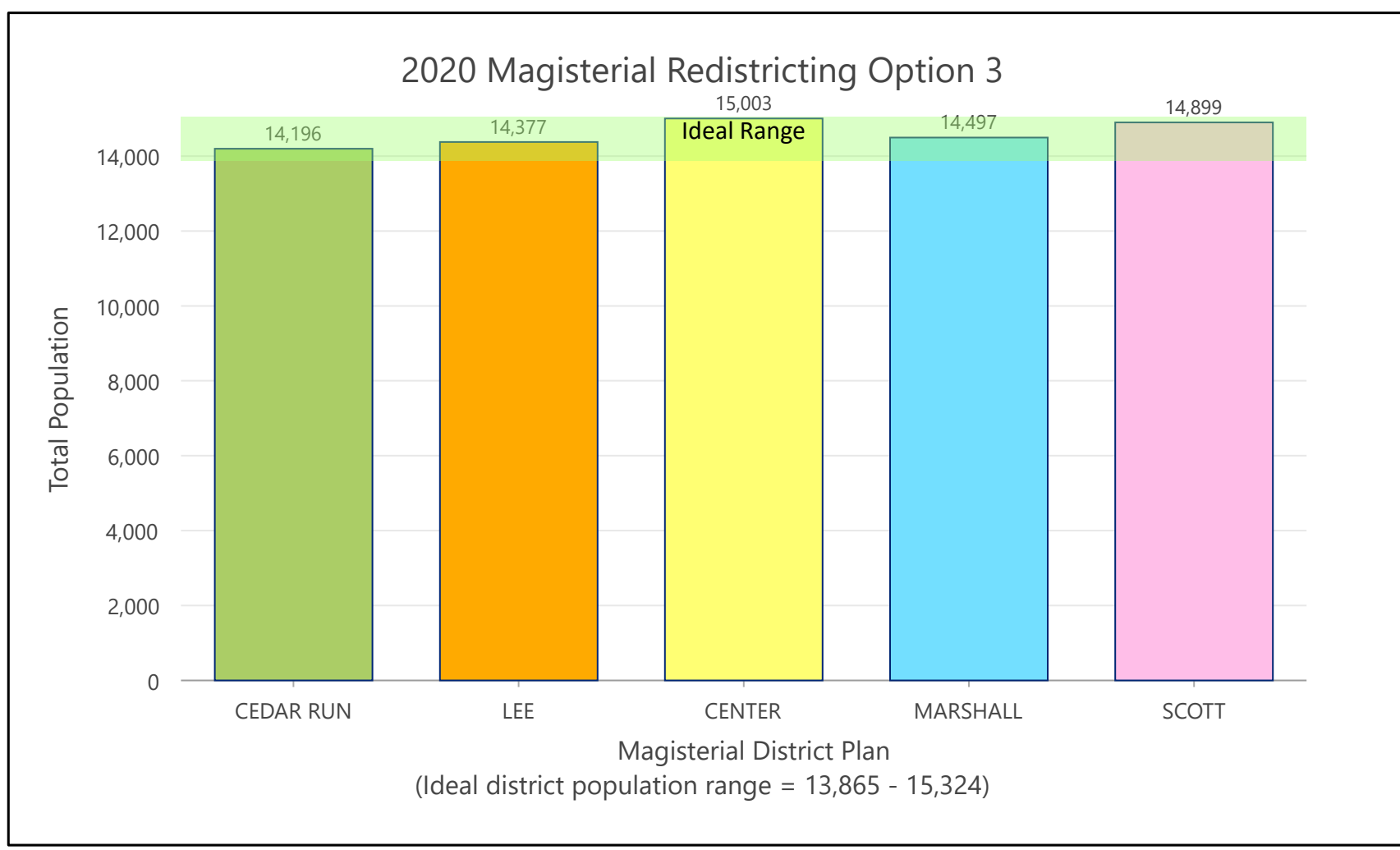
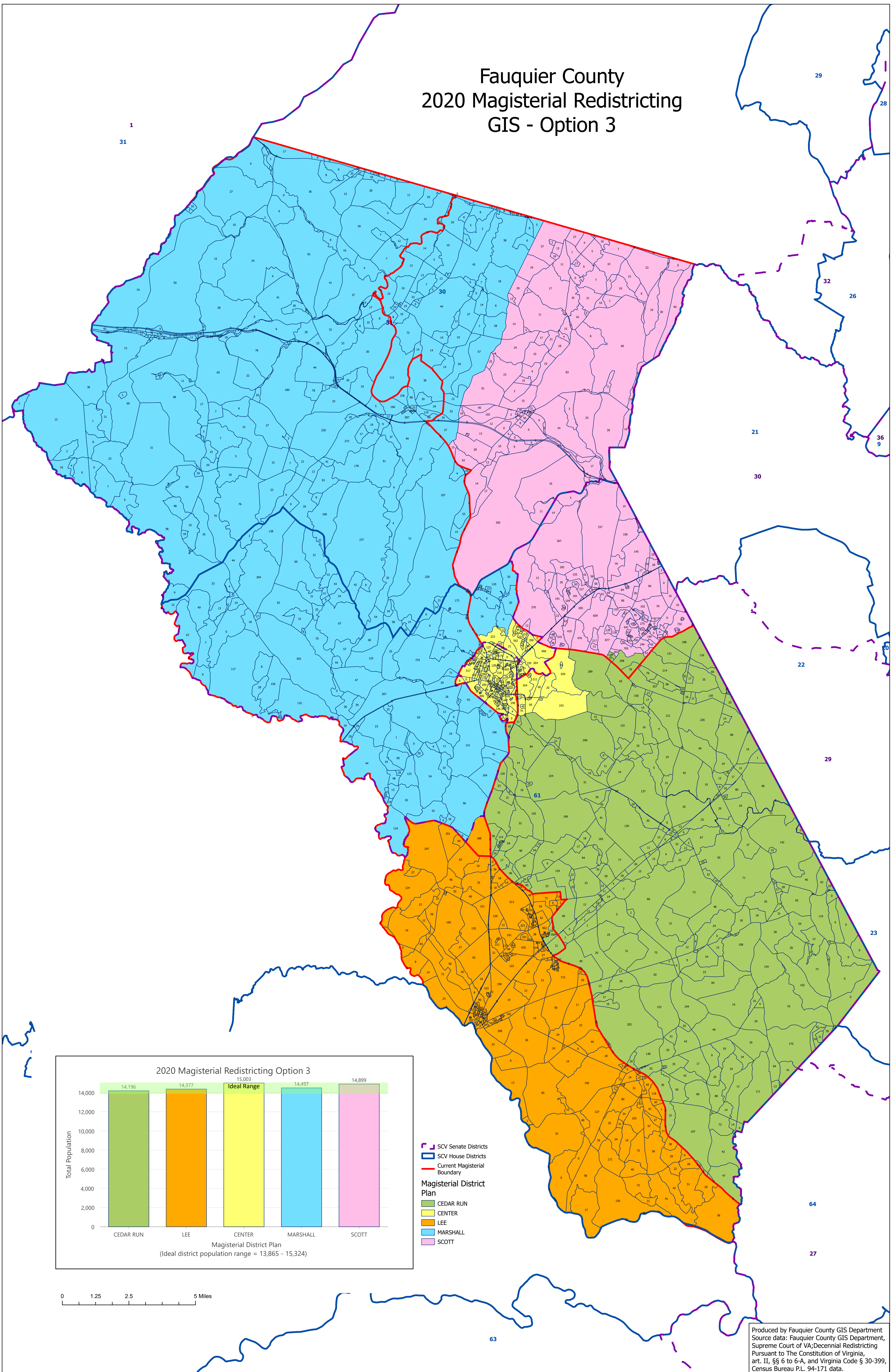
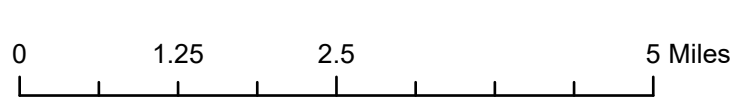


# Fauquier County 2020 Magisterial Redistricting GIS - Option 3



- SCV Senate Districts
  - SCV House Districts
  - Current Magisterial Boundary
- Magisterial District Plan**
- CEDAR RUN
  - CENTER
  - LEE
  - MARSHALL
  - SCOTT



Produced by Fauquier County GIS Department  
Source data: Fauquier County GIS Department, Supreme Court of VA; Decennial Redistricting Pursuant to The Constitution of Virginia, art. II, §§ 6 to 6-A, and Virginia Code § 30-399, Census Bureau P.L. 94-171 data.