



Fauquier County Commissioner of the Revenue Review of 2022 Reassessment

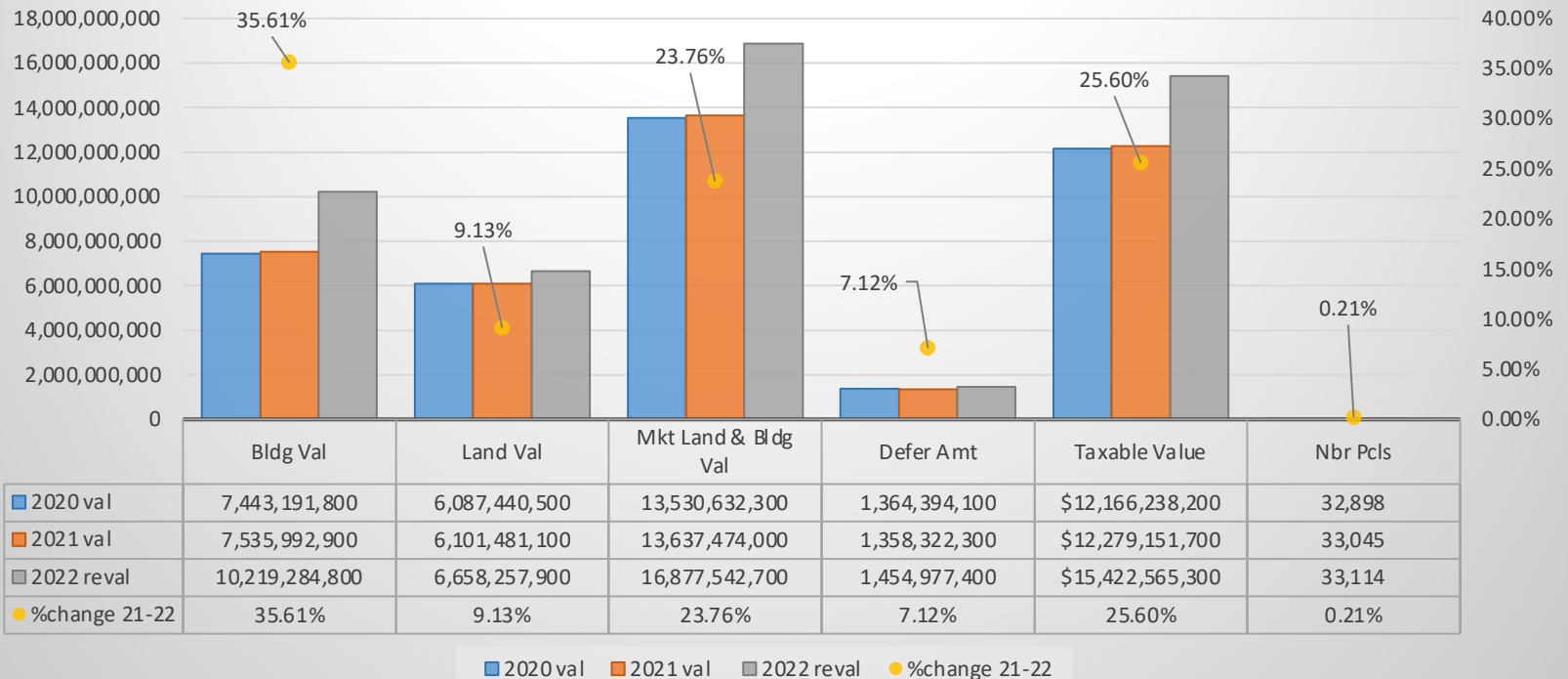
2020, 2021, 2022 REVAL VALUE COMPARISON

Prepared by: Eric Maybach
Commissioner of the Revenue
Fauquier County



Fauquier County Commissioner of the Revenue Review of 2022 Reassessment

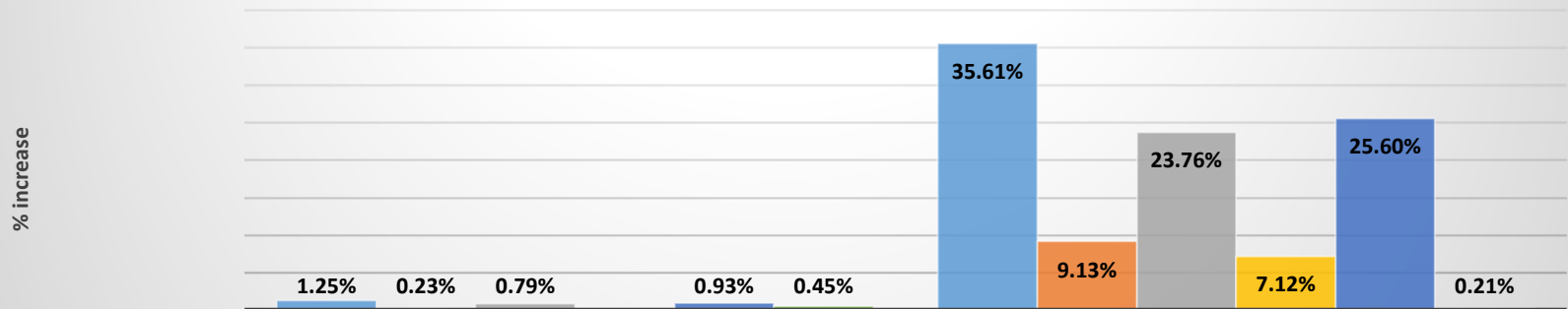
All Districts





Fauquier County Commissioner of the Revenue Review of 2022 Reassessment

% increase all Districts Combined



	2021	2022
Bldg Val	1.25%	35.61%
Land Val	0.23%	9.13%
Mkt Land & Bldg Val	0.79%	23.76%
Defer Amt	-0.45%	7.12%
Taxable Value	0.93%	25.60%
nbr Pcls Increase	0.45%	0.21%

Axis Title

■ Bldg Val
 ■ Land Val
 ■ Mkt Land & Bldg Val
 ■ Defer Amt
 ■ Taxable Value
 ■ nbr Pcls Increase



Fauquier County Commissioner of the Revenue Review of 2022 Reassessment

BUILDING VALUE / PARCEL CLASS

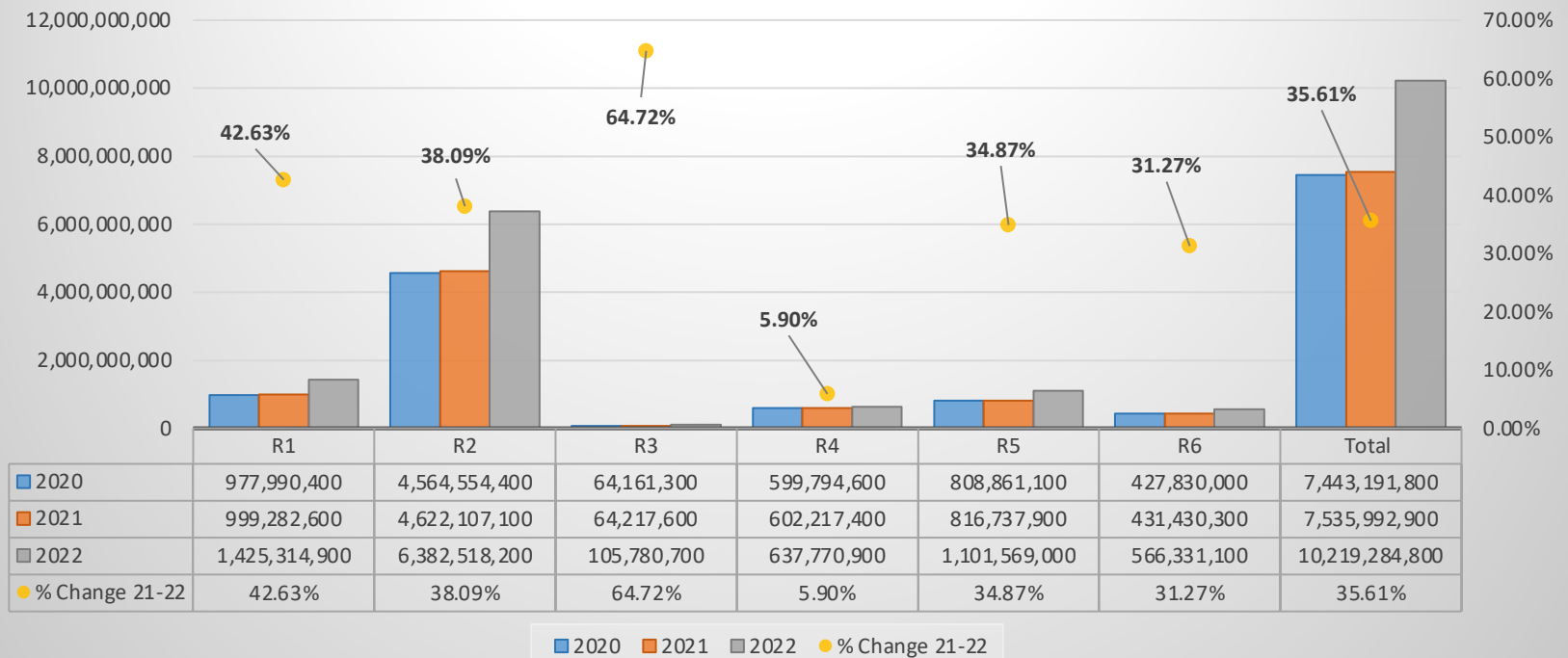
Parcel Class	2020	2021	2022	% Change 21-22
R1	1,600,500	1,600,500	1,623,900	1.46%
R2	162,533,400	162,274,100	165,622,100	2.06%
R3	324,700	324,700	365,500	12.57%
R4	30,516,900	30,509,300	65,088,300	113.34%
R5	669,200,900	665,807,400	695,916,900	4.52%
R6	500,217,700	497,806,300	526,360,700	5.74%
Total	1,364,394,100	1,358,322,300	1,454,977,400	7.12%

[-Internal-]



Fauquier County Commissioner of the Revenue Review of 2022 Reassessment

Building Value by Parcel Class





Fauquier County Commissioner of the Revenue Review of 2022 Reassessment

LAND VALUE / PARCEL CLASS

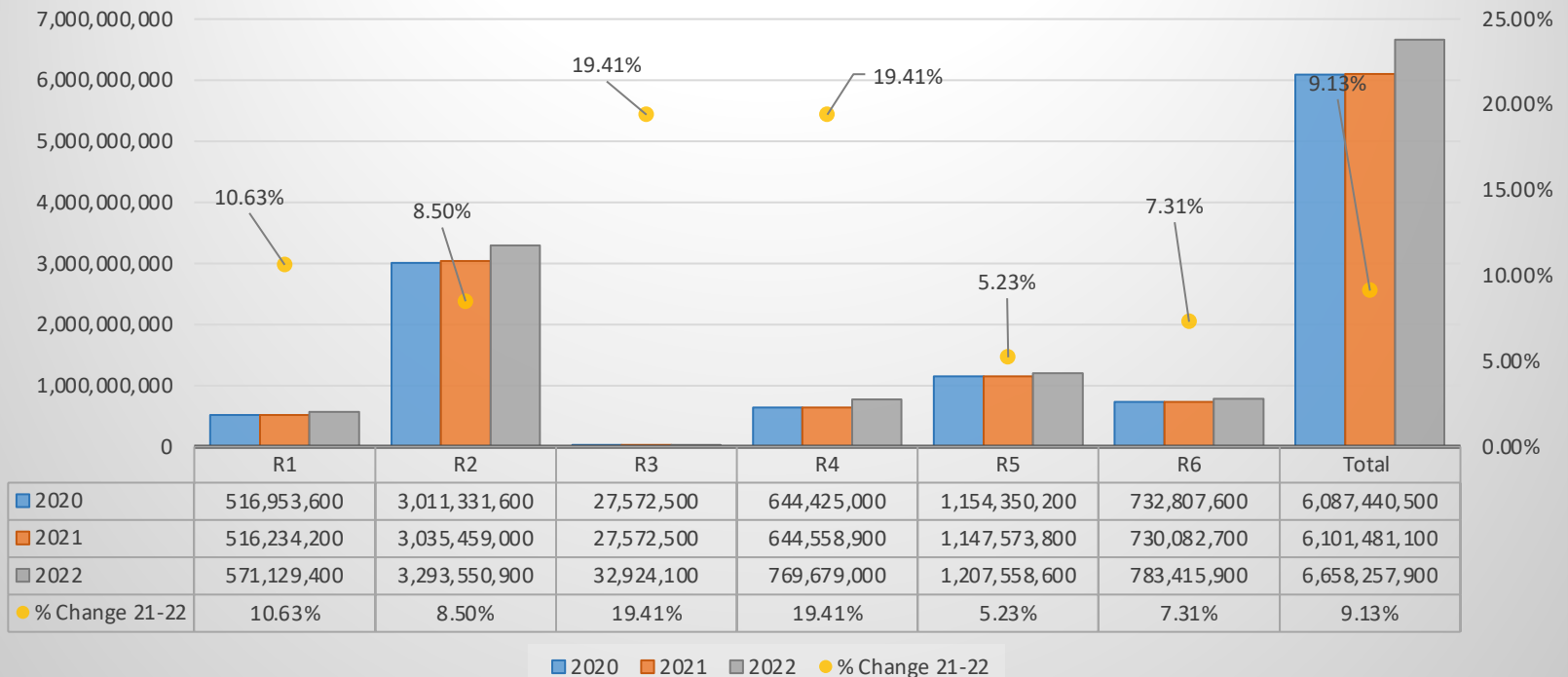
Parcel Class	2020	2021	2022	% Change 21-22
R1	516,953,600	516,234,200	571,129,400	10.63%
R2	3,011,331,600	3,035,459,000	3,293,550,900	8.50%
R3	27,572,500	27,572,500	32,924,100	19.41%
R4	644,425,000	644,558,900	769,679,000	19.41%
R5	1,154,350,200	1,147,573,800	1,207,558,600	5.23%
R6	732,807,600	730,082,700	783,415,900	7.31%
Total	6,087,440,500	6,101,481,100	6,658,257,900	9.13%

[-Internal-]



Fauquier County Commissioner of the Revenue Review of 2022 Reassessment

Land Value by Parcel Class





Fauquier County Commissioner of the Revenue Review of 2022 Reassessment

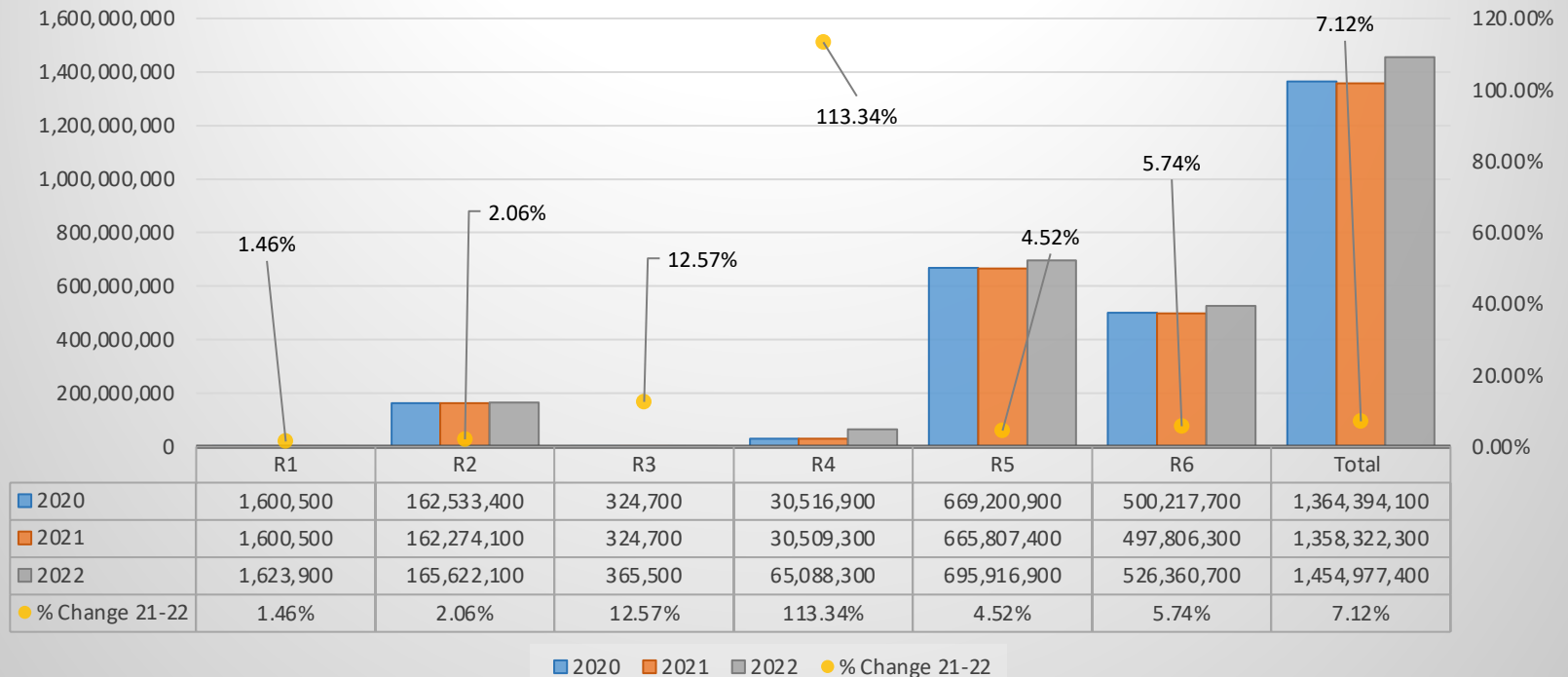
DEFER VALUE AMOUNT / PARCEL CLASS

Parcel Class	2020	2021	2022	% Change 21-22
R1	1,600,500	1,600,500	1,623,900	1.46%
R2	162,533,400	162,274,100	165,622,100	2.06%
R3	324,700	324,700	365,500	12.57%
R4	30,516,900	30,509,300	65,088,300	113.34%
R5	669,200,900	665,807,400	695,916,900	4.52%
R6	500,217,700	497,806,300	526,360,700	5.74%
Total	1,364,394,100	1,358,322,300	1,454,977,400	7.12%



Fauquier County Commissioner of the Revenue Review of 2022 Reassessment

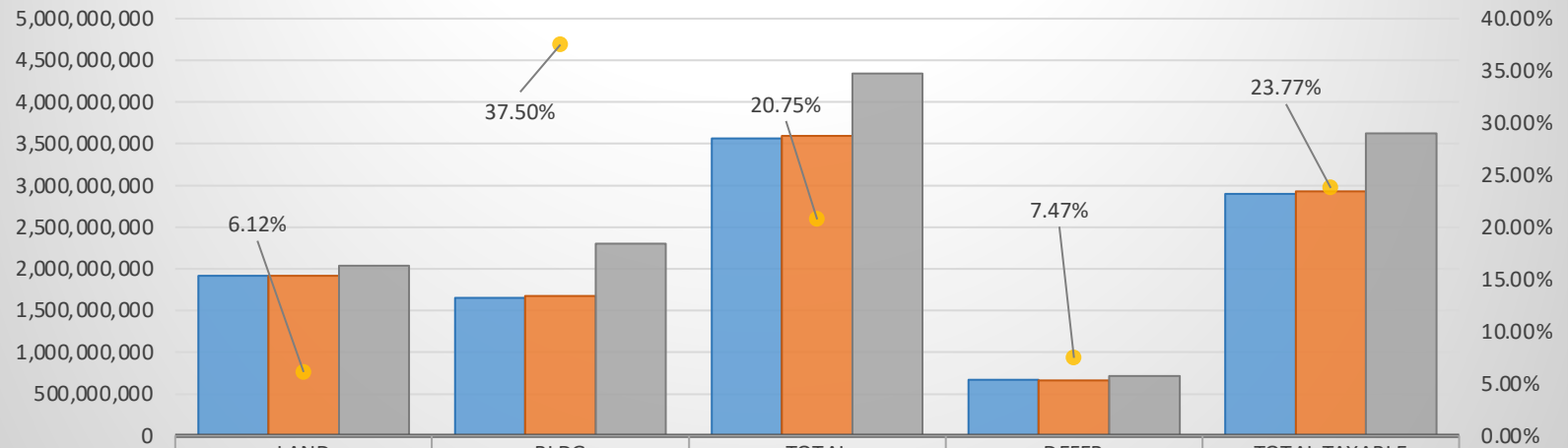
Defer Value Amount by Class





Fauquier County Commissioner of the Revenue 2022 Reassessment by Districts

Marshall District



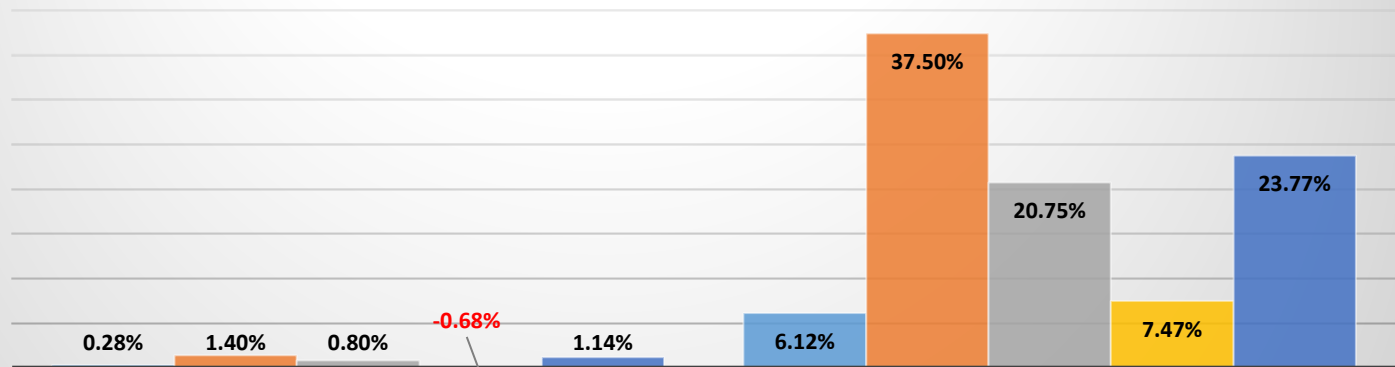
	LAND	BLDG	TOTAL	DEFER	TOTAL TAXABLE
2020	1,913,824,300	1,653,475,300	3,567,299,600	670,435,000	2,896,864,600
2021	1,919,091,400	1,676,639,200	3,595,730,600	665,881,600	2,929,849,000
2022	2,036,490,000	2,305,416,800	4,341,906,800	715,634,100	3,626,272,700
% change 21-22	6.12%	37.50%	20.75%	7.47%	23.77%

2020 2021 2022 % change 21-22



Fauquier County Commissioner of the Revenue Review of 2022 Reassessment

Marshall District by %



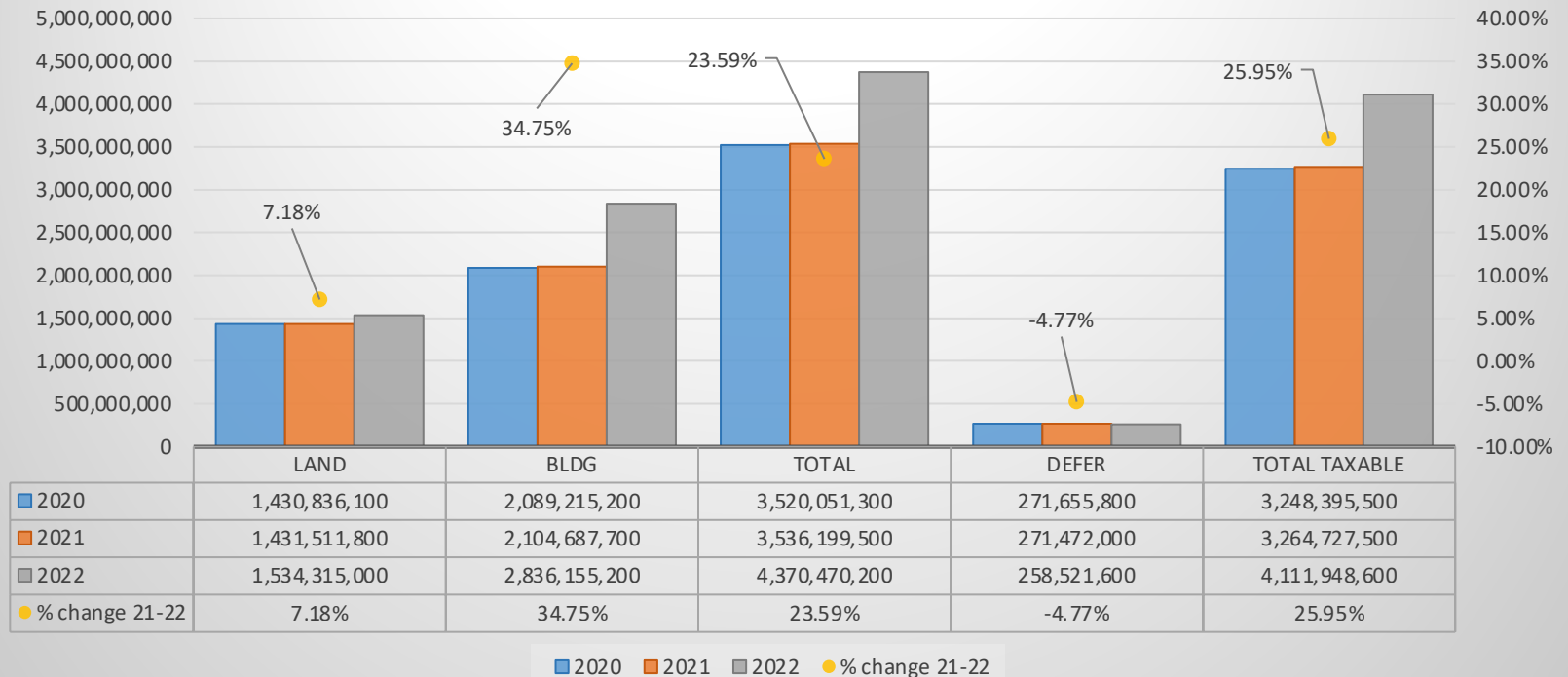
	2020-2021	2021-2022
LAND	0.28%	6.12%
BLDG	1.40%	37.50%
TOTAL	0.80%	20.75%
DEFER	-0.68%	7.47%
TOTAL TAXABLE	1.14%	23.77%

LAND BLDG TOTAL DEFER TOTAL TAXABLE



Fauquier County Commissioner of the Revenue 2022 Reassessment by Districts

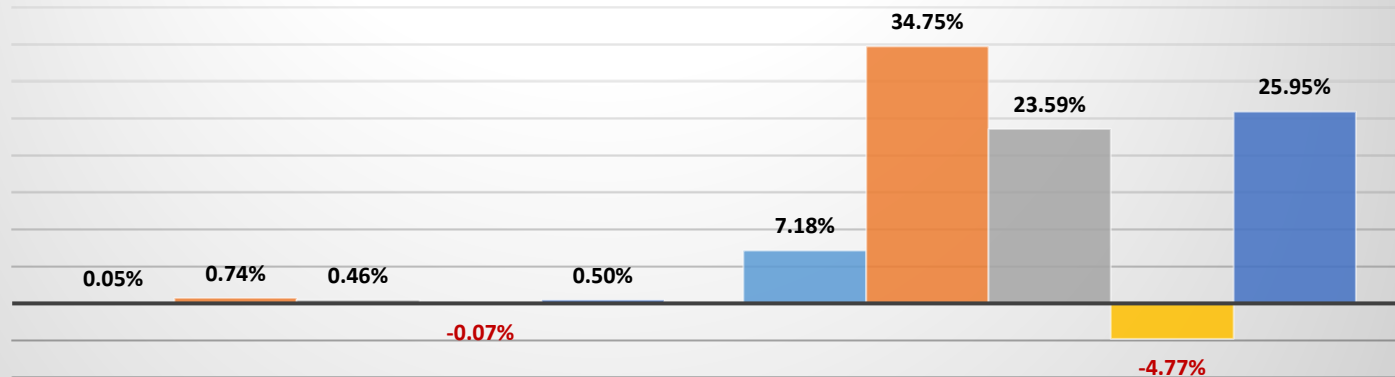
Scott District





Fauquier County Commissioner of the Revenue Review of 2022 Reassessment

Scott District by %



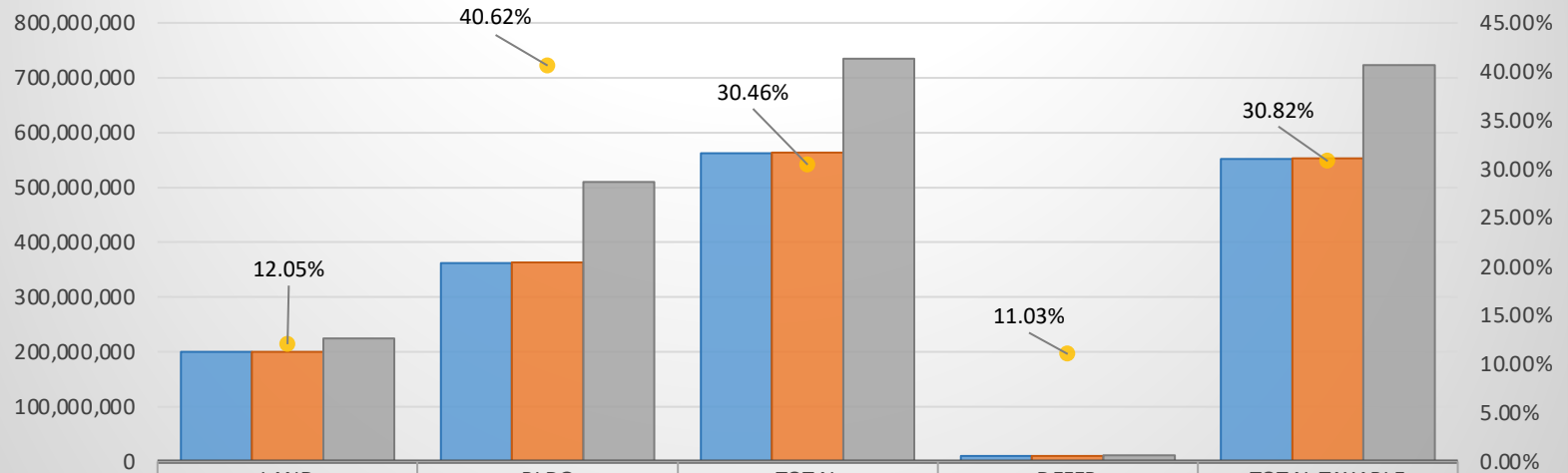
	2020-2021	2021-2022
LAND	0.05%	7.18%
BLDG	0.74%	34.75%
TOTAL	0.46%	23.59%
DEFER	-0.07%	-4.77%
TOTAL TAXABLE	0.50%	25.95%

LAND BLDG TOTAL DEFER TOTAL TAXABLE



Fauquier County Commissioner of the Revenue 2022 Reassessment by Districts

Center District



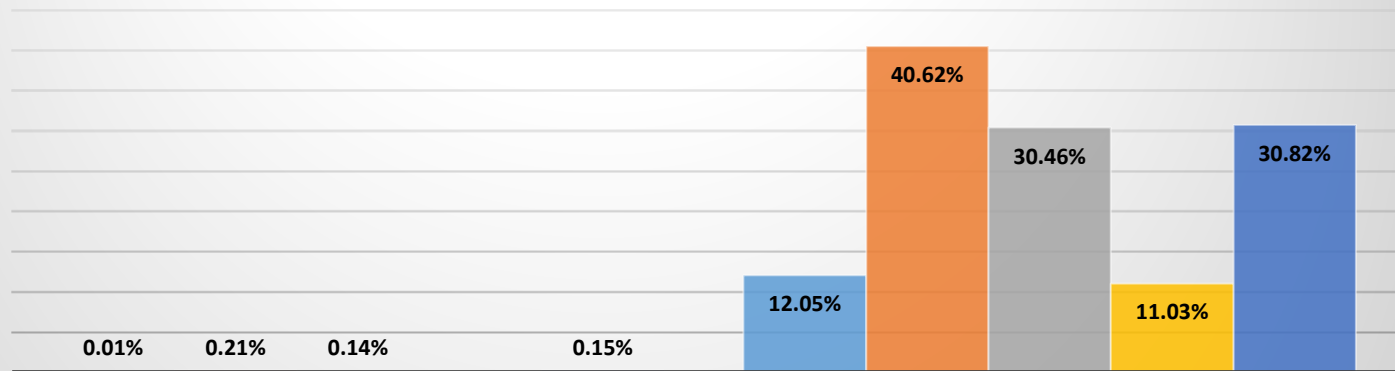
	LAND	BLDG	TOTAL	DEFER	TOTAL TAXABLE
2020	200,200,600	361,928,700	562,129,300	10,402,400	551,726,900
2021	200,215,500	362,691,600	562,907,100	10,373,100	552,534,000
2022	224,333,700	510,023,300	734,357,000	11,517,700	722,839,300
% change 21-22	12.05%	40.62%	30.46%	11.03%	30.82%

2020 2021 2022 % change 21-22



Fauquier County Commissioner of the Revenue Review of 2022 Reassessment

Center District by %



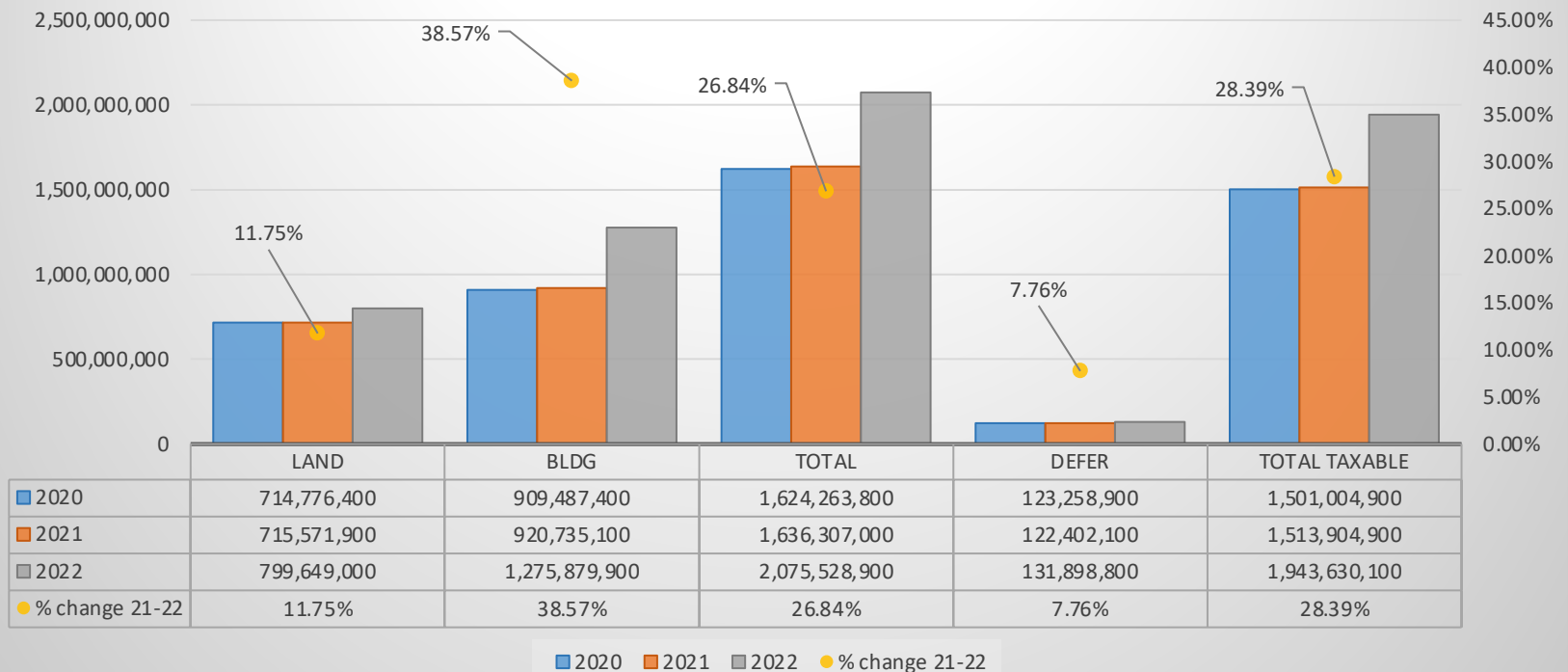
	2020-2021	2021-2022
LAND	0.01%	12.05%
BLDG	0.21%	40.62%
TOTAL	0.14%	30.46%
DEFER	-0.28%	11.03%
TOTAL TAXABLE	0.15%	30.82%

LAND BLDG TOTAL DEFER TOTAL TAXABLE



Fauquier County Commissioner of the Revenue 2022 Reassessment by Districts

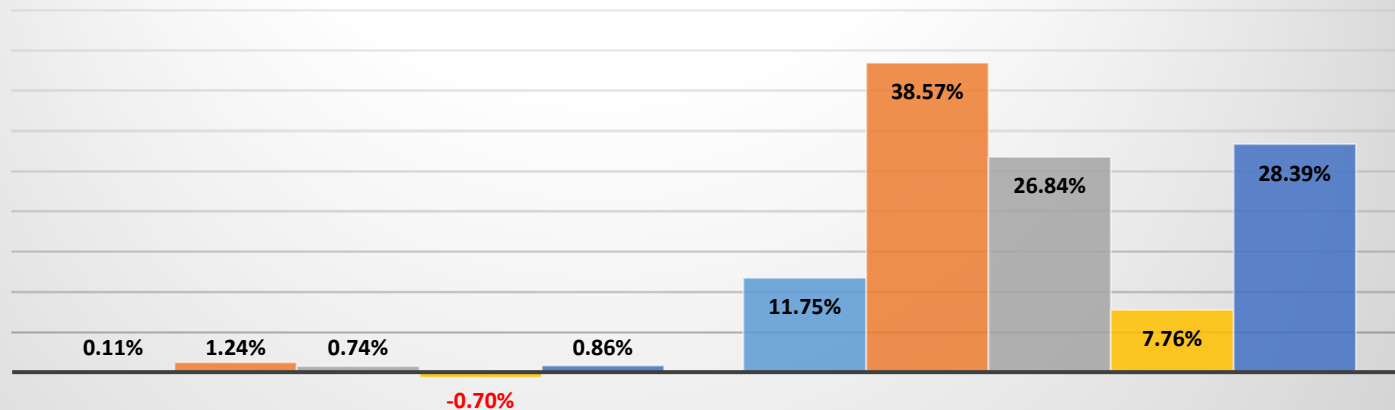
Lee District





Fauquier County Commissioner of the Revenue Review of 2022 Reassessment

Lee District by %



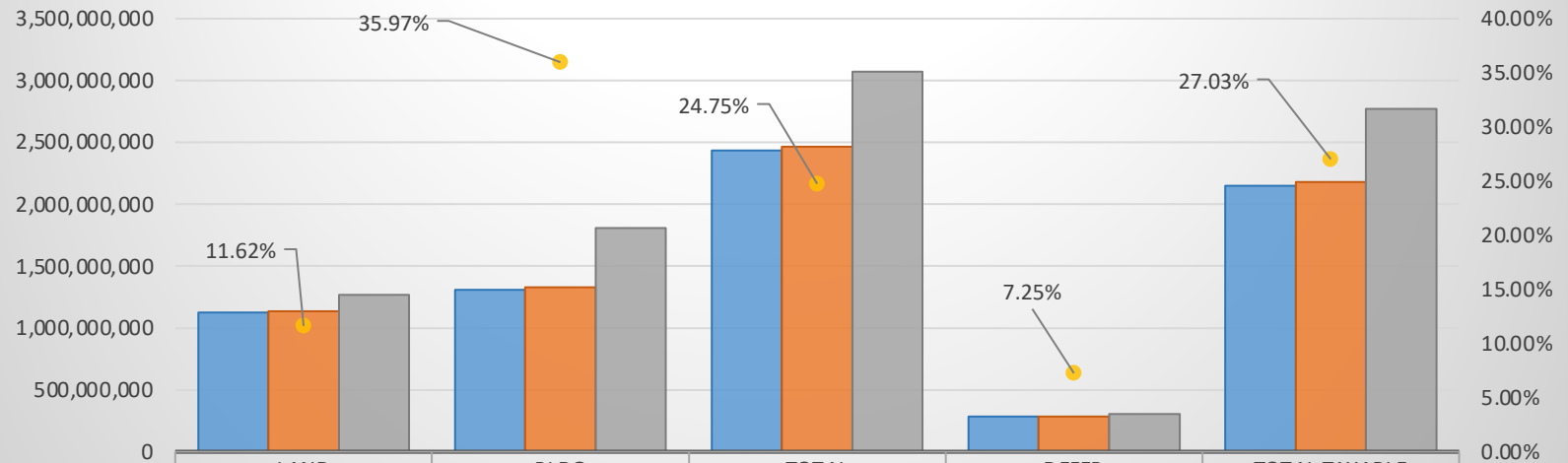
	2020-2021	2021-2022
LAND	0.11%	11.75%
BLDG	1.24%	38.57%
TOTAL	0.74%	26.84%
DEFER	-0.70%	7.76%
TOTAL TAXABLE	0.86%	28.39%

LAND BLDG TOTAL DEFER TOTAL TAXABLE



Fauquier County Commissioner of the Revenue 2022 Reassessment by Districts

Cedar Run



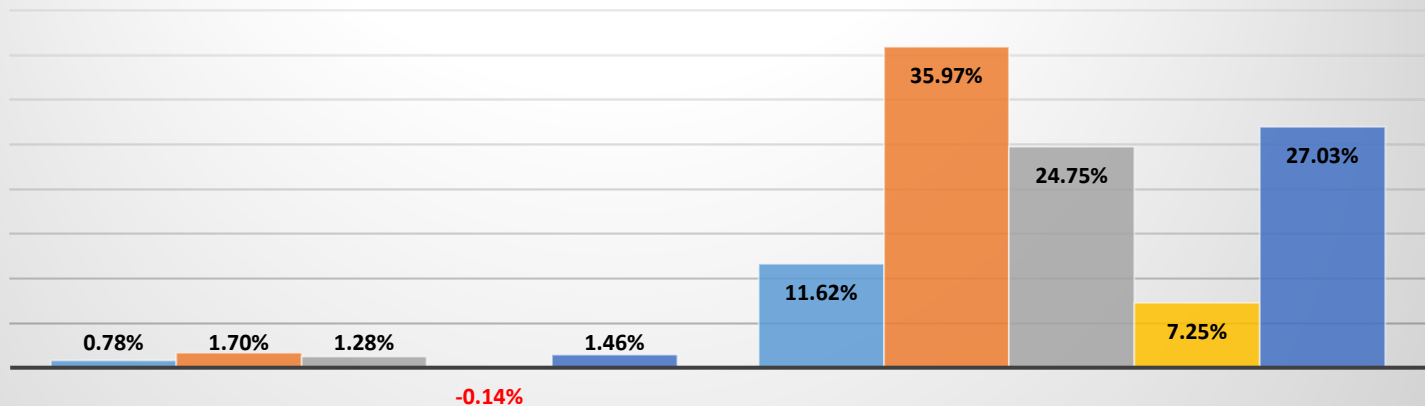
	LAND	BLDG	TOTAL	DEFER	TOTAL TAXABLE
2020	1,125,934,600	1,306,186,800	2,432,121,400	283,894,100	2,148,227,300
2021	1,134,767,800	1,328,370,900	2,463,138,700	283,504,700	2,179,634,000
2022	1,266,574,100	1,806,242,300	3,072,816,400	304,065,300	2,768,751,100
% change 21-22	11.62%	35.97%	24.75%	7.25%	27.03%

2020 2021 2022 % change 21-22



Fauquier County Commissioner of the Revenue Review of 2022 Reassessment

Cedar Run District by %



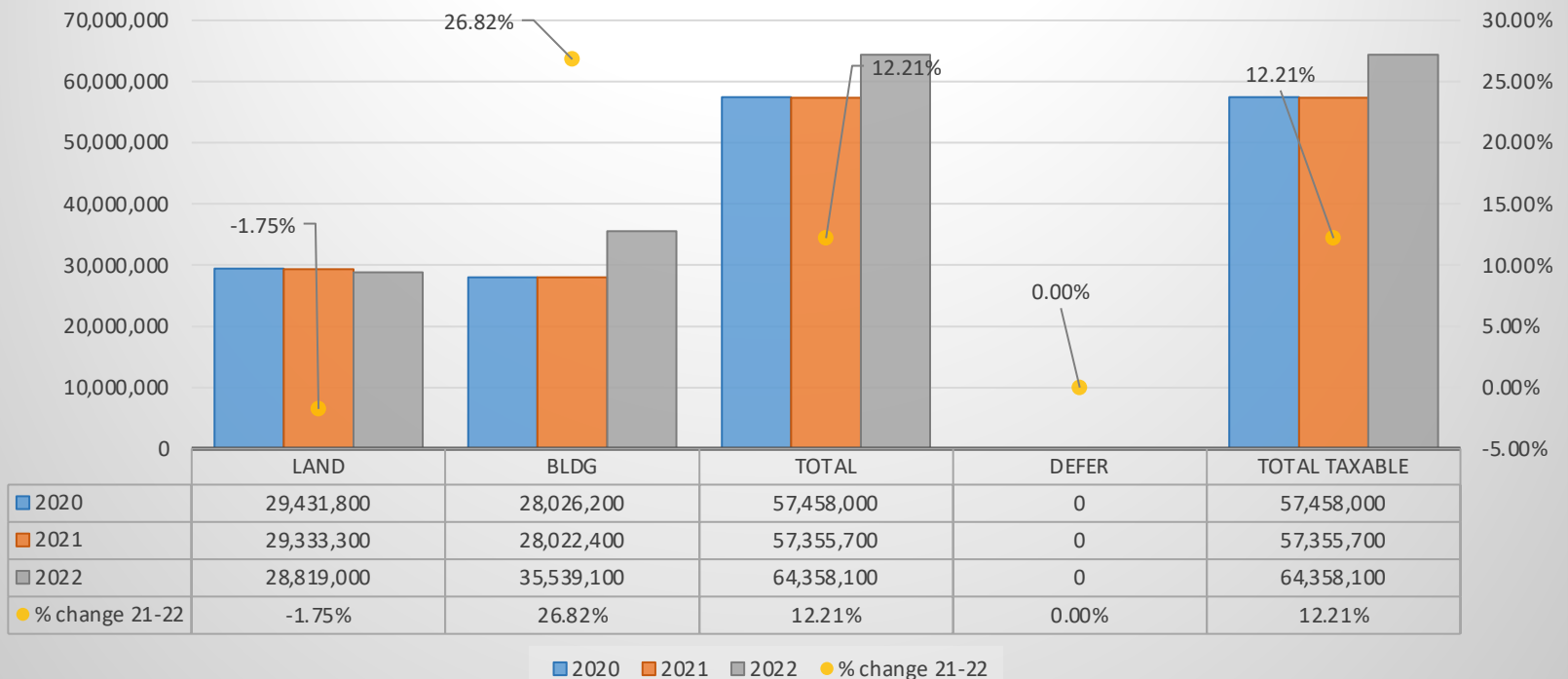
	2020-2021	2021-2022
LAND	0.78%	11.62%
BLDG	1.70%	35.97%
TOTAL	1.28%	24.75%
DEFER	-0.14%	7.25%
TOTAL TAXABLE	1.46%	27.03%

LAND BLDG TOTAL DEFER TOTAL TAXABLE



Fauquier County Commissioner of the Revenue 2022 Reassessment by Districts

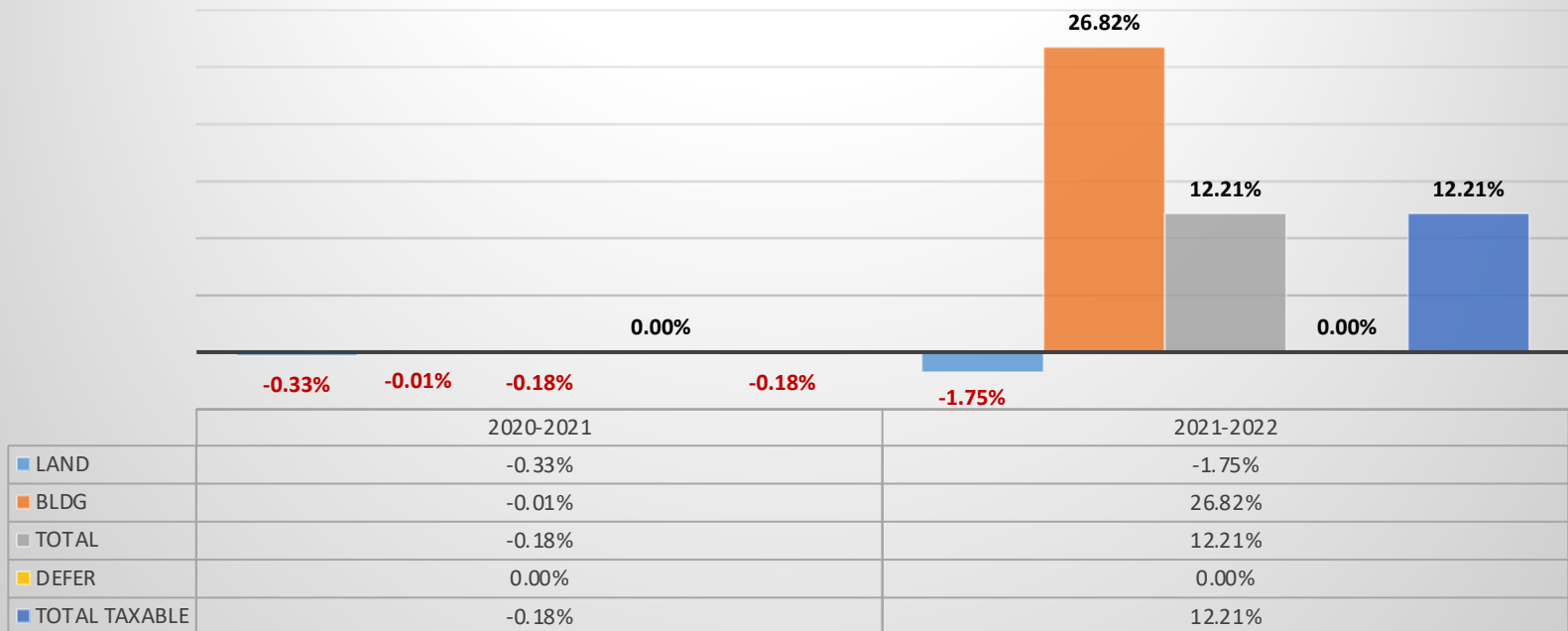
Scott-The Plains





Fauquier County Commissioner of the Revenue Review of 2022 Reassessment

Scott-The Plains by %

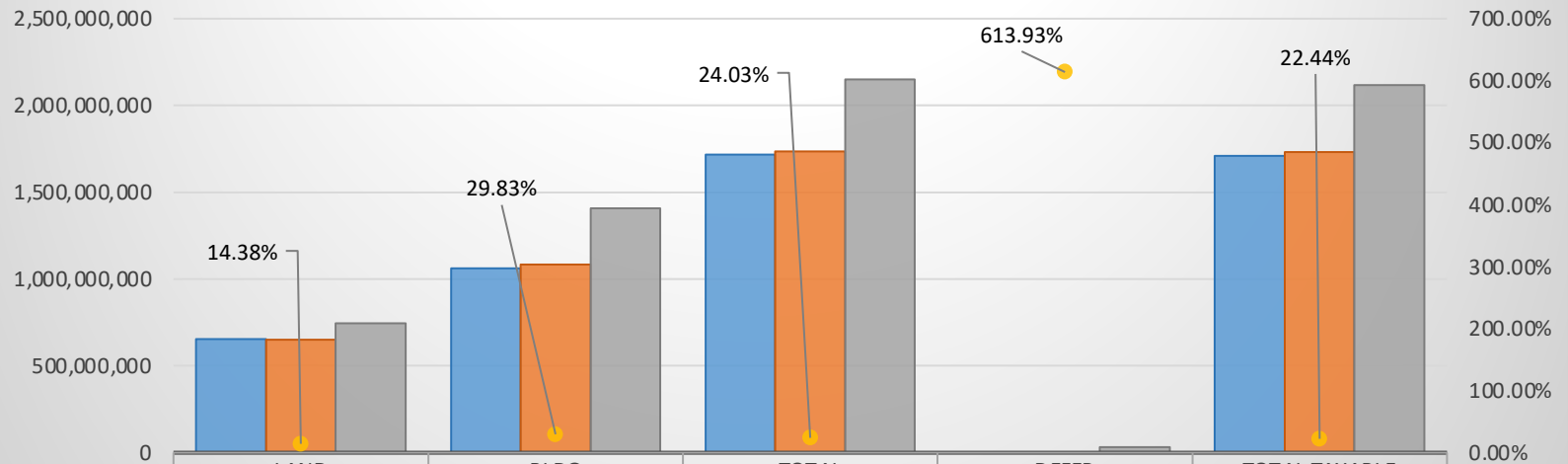


■ LAND ■ BLDG ■ TOTAL ■ DEFER ■ TOTAL TAXABLE



Fauquier County Commissioner of the Revenue 2022 Reassessment by Districts

Center-Warrenton



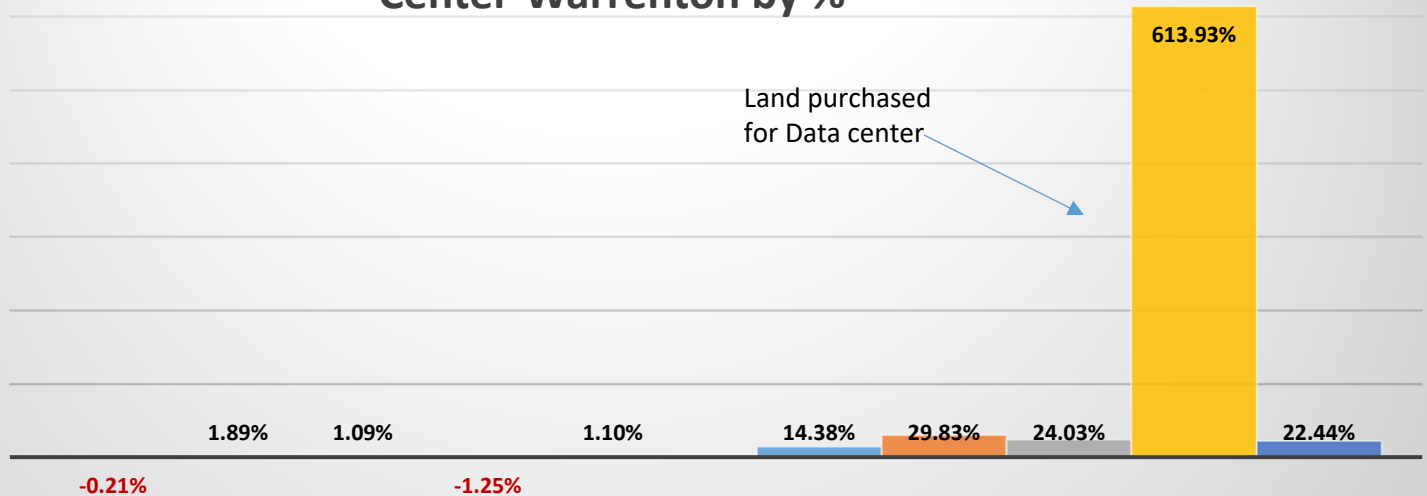
	LAND	BLDG	TOTAL	DEFER	TOTAL TAXABLE
2020	653,282,900	1,063,027,100	1,716,310,000	4,721,500	1,711,588,500
2021	651,901,500	1,083,133,500	1,735,035,000	4,662,400	1,730,372,600
2022	745,664,600	1,406,236,200	2,151,900,800	33,286,200	2,118,614,600
% change 21-22	14.38%	29.83%	24.03%	613.93%	22.44%

2020 2021 2022 % change 21-22



Fauquier County Commissioner of the Revenue 2022 Reassessment by Districts

Center-Warrenton by %

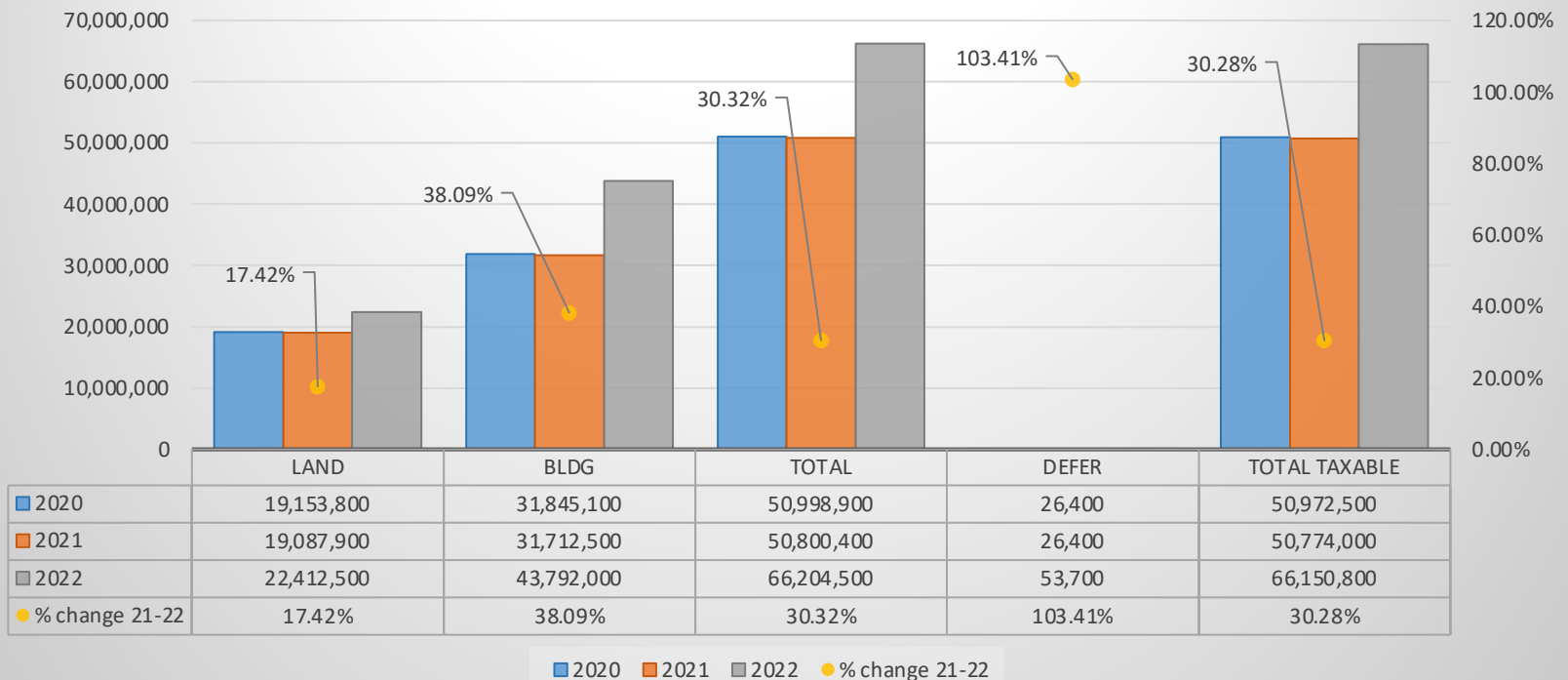


	2020-2021	2021-2022
LAND	-0.21%	14.38%
BLDG	1.89%	29.83%
TOTAL	1.09%	24.03%
DEFER	-1.25%	613.93%
TOTAL TAXABLE	1.10%	22.44%



Fauquier County Commissioner of the Revenue 2022 Reassessment by Districts

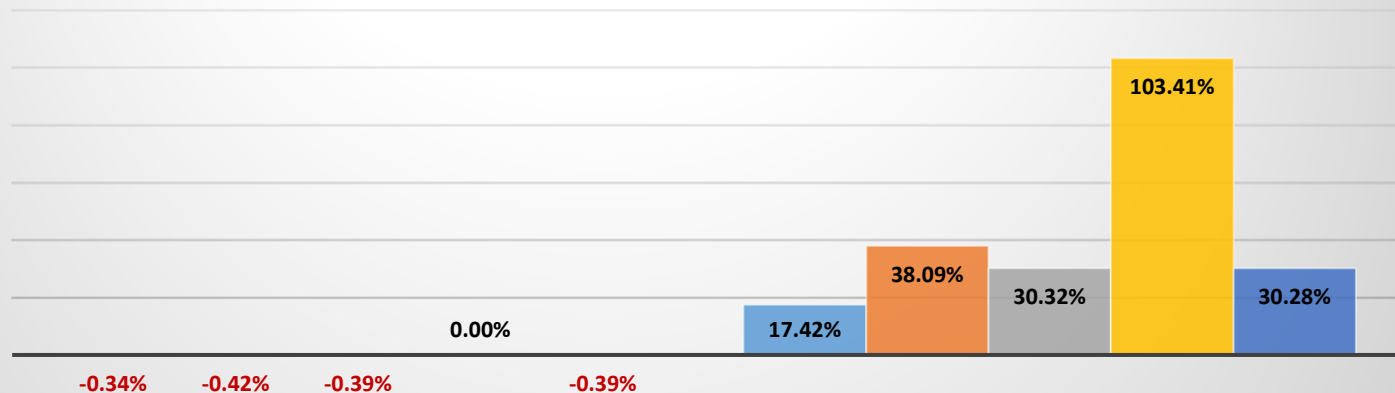
Lee- Remington





Fauquier County Commissioner of the Revenue Review of 2022 Reassessment

Lee-Remington by %



	2020-2021	2021-2022
LAND	-0.34%	17.42%
BLDG	-0.42%	38.09%
TOTAL	-0.39%	30.32%
DEFER	0.00%	103.41%
TOTAL TAXABLE	-0.39%	30.28%

LAND BLDG TOTAL DEFER TOTAL TAXABLE

That's all Folks!