



# Fauquier County Public Schools

## Path to Reopening





## **PATH to REOPENING**

# State Requirements

- School divisions must develop & submit a plan for new instruction.
- Plans must include:
  1. Operational Infrastructure to Support Learning
  2. New Instruction Plan for All Students
  3. Identification of Instructional Gaps and Student Needs
  4. Contingency Plan for Ensuring Continuity of New Instruction if Further Closures were Necessary
- Plan must be posted and available for review 15 business days before first day of academic year (July 22 based on our current calendar)



# PATH to REOPENING

## Timeline

**June 18-25**

Stakeholder  
Survey to Inform  
Decisions

**June 29**

"Path to  
Reopening"  
Overview  
Presentation

**July 13 (or earlier)**

Finalize Potential  
Calendar  
Recommendation

**July 22 (or earlier)**

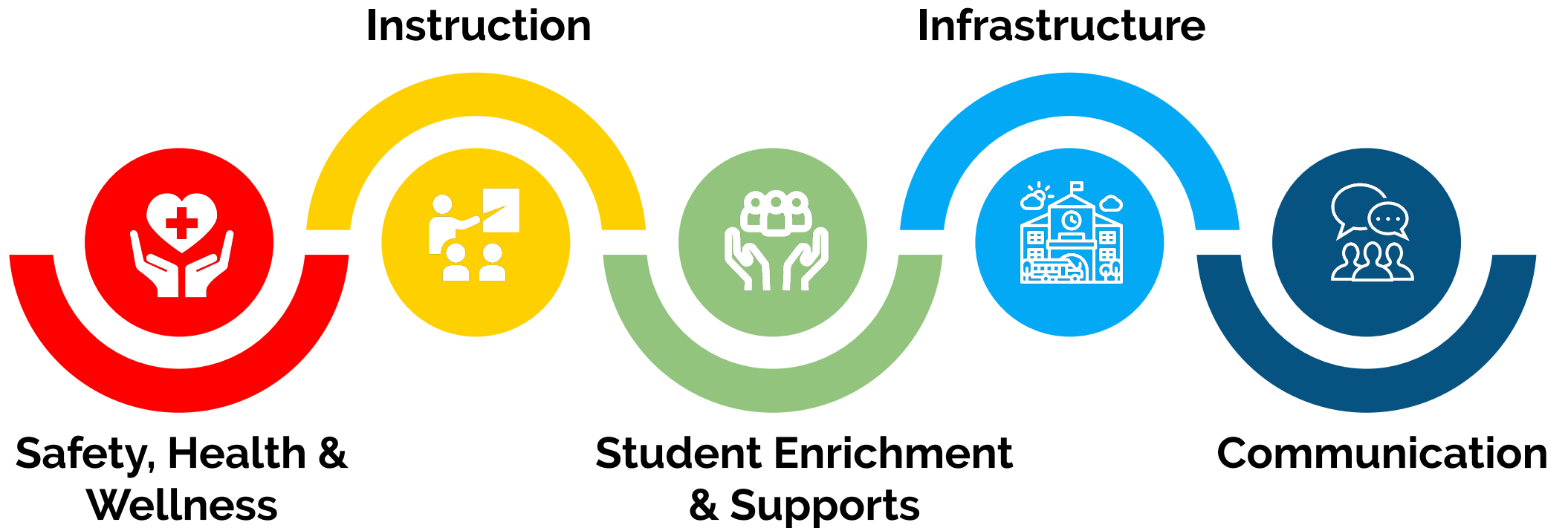
Submit Plans and  
Post on Website:

1. Instructional  
Plan (1-4 from  
requirements)
2. Health Plan



# Fauquier County Public Schools

## Path to Reopening





# Fauquier County Public Schools

## Path to Reopening



**Safety, Health &  
Wellness**



**Student & Staff**

# Safety, Health & Wellness

*Champions: Frank Finn, Pam Trude, Janelle Downes*



## Survey Results:

- 12.6% **(200) staff** members reported they have a health condition that will prevent them from returning to work during the pandemic.
- 8.6 % **(478) parents** reported their child has a health condition or concern that may not allow them to physically return to school in the fall.



## Student & Staff

# Safety, Health & Wellness

What We Know	How We're Preparing
<ul style="list-style-type: none"><li>● We must plan for some of our employees and students not to return when school opens.</li></ul>	<ul style="list-style-type: none"><li>● Developing strategies to fill teacher vacancies for those who cannot return due to COVID-19.<ul style="list-style-type: none"><li>○ utilizing retired staff for virtual learning</li><li>○ partnering with universities to allow for graduate and undergraduate teacher candidates to intern</li></ul></li><li>● Providing resources and procedures on current and new leave options and supports.</li><li>● Recruiting substitute bus drivers, bus aides, and food service attendants.</li></ul>



**Student & Staff**

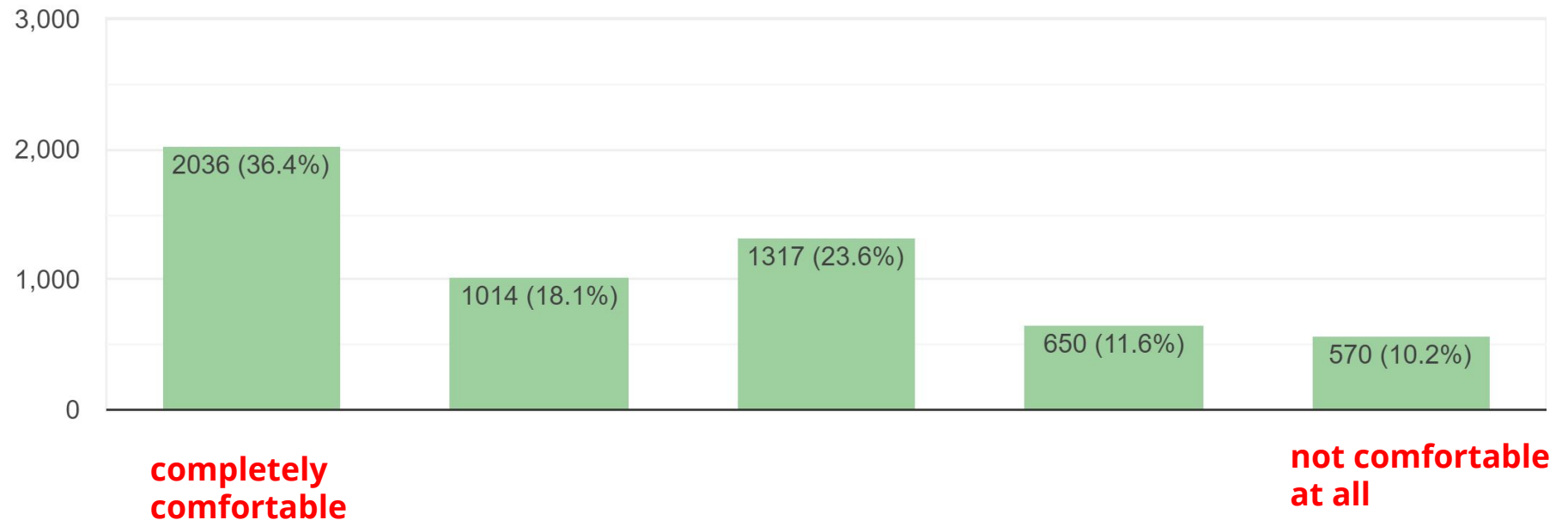
# Safety, Health & Wellness

## Parent Survey:



How do you feel about your child / children physically returning to school (assuming current safety and health guidelines are followed)?

5,587 responses







## Student & Staff

# Safety, Health & Wellness

What We Know	How We're Preparing
<ul style="list-style-type: none"><li>● New health protocols must be taught and followed to minimize spread of disease.</li><li>● Mental health must be monitored and addressed.</li></ul>	<p>We're Developing:</p> <ul style="list-style-type: none"><li>● Health Mitigation plan</li><li>● Self-Health screenings to be completed by staff and students prior to entering buildings</li><li>● Training for staff and students on all new policies and procedures</li><li>● Handbook for teachers and nurses</li><li>● Return to Work guidelines after quarantine</li><li>● Plan for student and staff mental health and wellness</li><li>● Expand Youth Mental Health First Aid training</li></ul> <p>A behavioral health clinician has been hired for the Employee Wellness Center.</p>

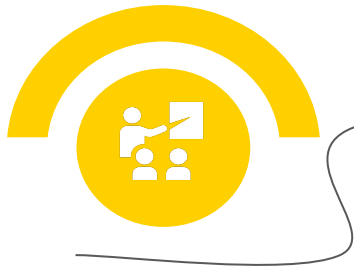


# Fauquier County Public Schools

## Path to Reopening

### Instruction





## 2020-2021 Calendar

# Instruction

*Champions: Major Warner, Amy Acors, Tara Helkowski*

What We Know	How We're Preparing
<ul style="list-style-type: none"><li>● Staff will need additional time for professional learning and training</li><li>● First day for teachers is Aug. 5.</li></ul>	<p>We produced an amended 2020-2021 calendar for review.</p> <p>Features:</p> <ul style="list-style-type: none"><li>● August 19 start date</li><li>● School year ends June 2</li><li>● Half-days removed</li><li>● Many holidays remained the same to allow for deeper cleanings of our buildings</li></ul>



# 2020-2021 Calendar Instruction

**DRAFT**

**2020-2021 Calendar**



**Fauquier County Public Schools**

**DRAFT**  
**AMENDED 2020-2021 SCHOOL CALENDAR**  
*Year at a Glance*

## AUGUST 2020

S	M	T	W	T	F	S
						1
2	3	4	5	6	7	8
9	10	11	12	13	14	15
16	17	18	19	20	21	22
23	24	25	26	27	28	29
30	31					

5 - 18 Professional Learning/  
Teacher Work Days

19 First Day of School

## SEPTEMBER 2020

S	M	T	W	T	F	S
		1	2	3	4	5
6	7	8	9	10	11	12
13	14	15	16	17	18	19
20	21	22	23	24	25	26
27	28	29	30			

7 Labor Day Holiday -  
No School

## OCTOBER 2020

S	M	T	W	T	F	S
				1	2	3
4	5	6	7	8	9	10
11	12	13	14	15	16	17
18	19	20	21	22	23	24
25	26	27	28	29	30	31

12 Professional Learning  
Day -No School for  
Students

16 End of First Quarter  
(41 Days)

## NOVEMBER 2020

S	M	T	W	T	F	S
1	2	3	4	5	6	7
8	9	10	11	12	13	14
15	16	17	18	19	20	21
22	23	24	25	26	27	28
29	30					

3 Teacher Work Day -No  
School for Students

25-27 No School

## DECEMBER 2020

S	M	T	W	T	F	S
		1	2	3	4	5
6	7	8	9	10	11	12
13	14	15	16	17	18	19
20	21	22	23	24	25	26
27	28	29	30	31		

17 End of Second Quarter  
(40 Days)

18 Teacher Work Day -No  
School for Students

21-31 Winter Break - No  
School

## JANUARY 2021

S	M	T	W	T	F	S
					1	2
3	4	5	6	7	8	9
10	11	12	13	14	15	16
17	18	19	20	21	22	23
24	25	26	27	28	29	30
31						

1 New Year's Holiday - No  
School

4 Teacher Work Day -No  
School for Students

18 MLK Holiday - No  
School

## FEBRUARY 2021

S	M	T	W	T	F	S
	1	2	3	4	5	6
7	8	9	10	11	12	13
14	15	16	17	18	19	20
21	22	23	24	25	26	27
28						

15 President's Day Holiday  
- No School

## MARCH 2021

S	M	T	W	T	F	S
	1	2	3	4	5	6
7	8	9	10	11	12	13
14	15	16	17	18	19	20
21	22	23	24	25	26	27
28	29	30	31			

12 End of Third  
Quarter (47 Days)

29-31 Spring Break - No  
School

## APRIL 2021

S	M	T	W	T	F	S
				1	2	3
4	5	6	7	8	9	10
11	12	13	14	15	16	17
18	19	20	21	22	23	24
25	26	27	28	29	30	

1-2 Spring Break - No  
School

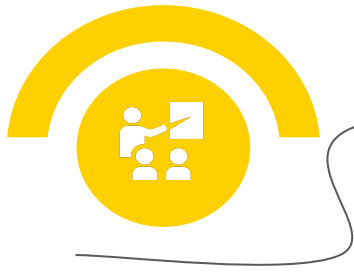
## MAY 2021

S	M	T	W	T	F	S
						1
2	3	4	5	6	7	8
9	10	11	12	13	14	15
16	17	18	19	20	21	22
23	24	25	26	27	28	29
30	31	1	2	3	4	5

May 31 Memorial Day Holiday  
- No School

June 2 Last Day of School  
End of Fourth Quarter  
(52 Days)

June 3 Teacher Work Day



**2020-2021 Calendar**

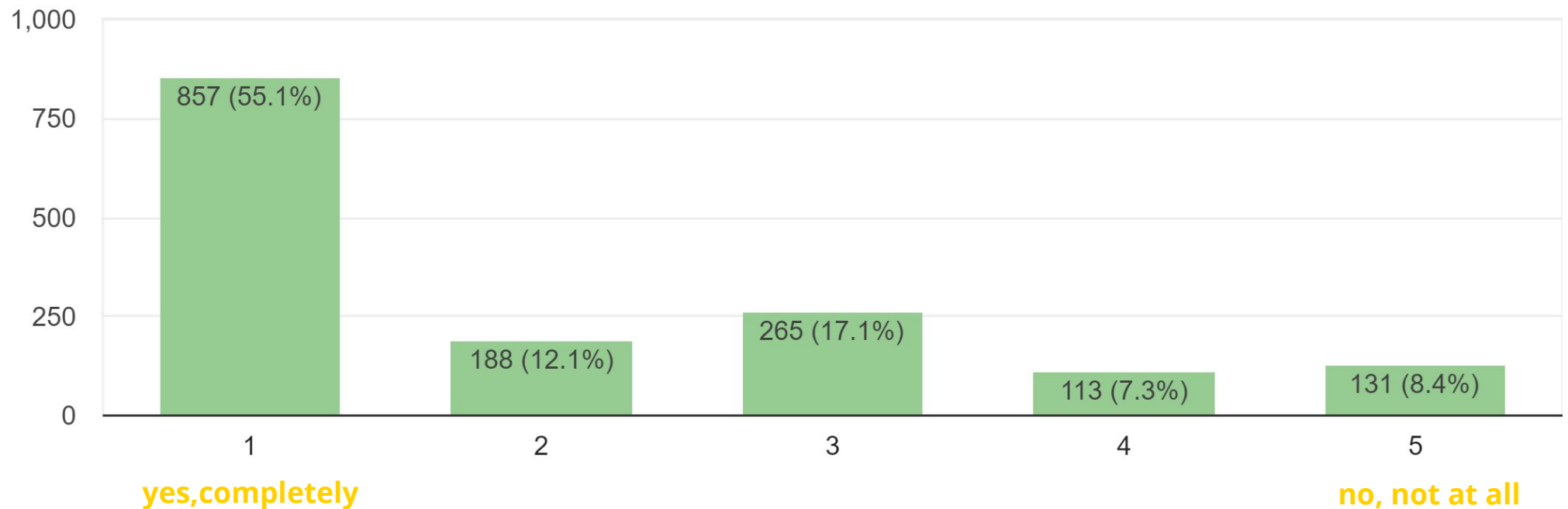
# Instruction

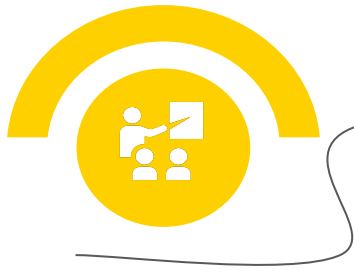
## Staff Survey:



Teachers are currently scheduled to start back on August 5. Given the need for professional learning to adjust for a blended school year, it is ...Would you support a school start date of August 19?

1,554 responses





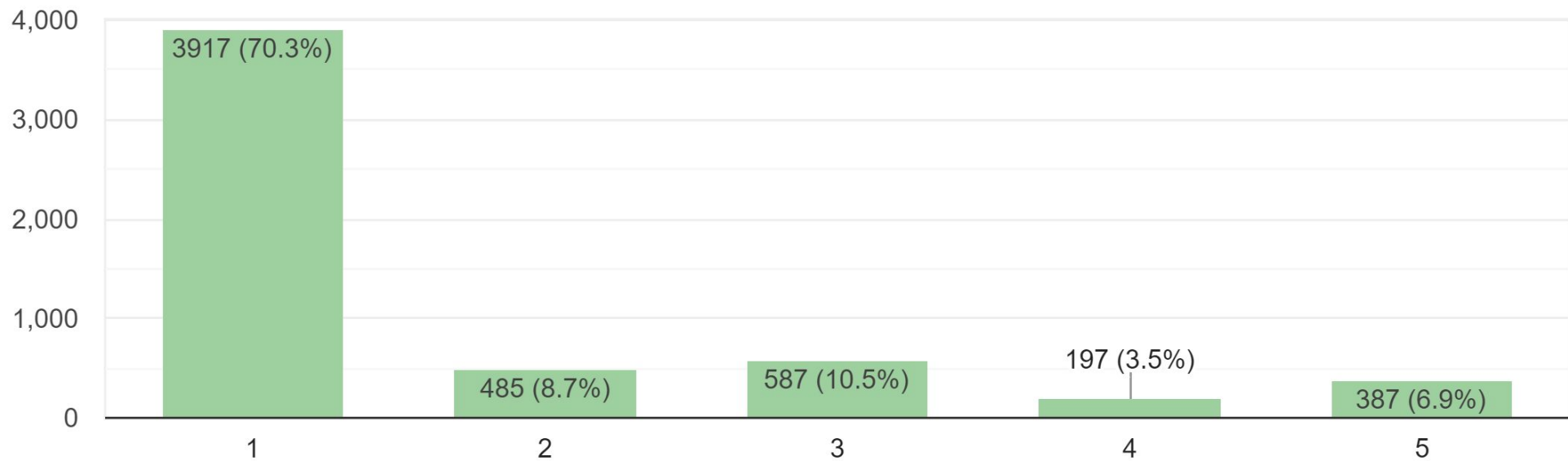
**2020-2021 Calendar**

# Instruction

## Parent Survey:

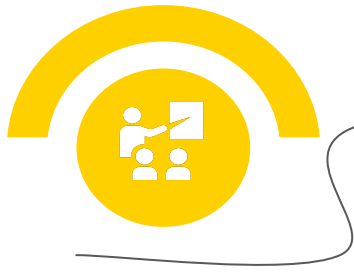


Our teachers are currently scheduled to start back on August 5. Given the need for professional learning to adjust for a blended school year, it is ...Would you support a school start date of August 19?  
5,573 responses



**yes, completely**

**no, not at all**



## Instructional Framework

# Instruction

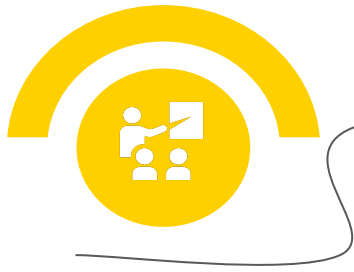
*Champion: Major Warner*

### What We Know

- Blended learning model (face-to-face combined with distance learning) will likely be necessary to ensure social distancing in buildings and on buses.
- A blended learning model would incorporate a planning day to provide opportunities for facilities to be cleaned and staff to be available to students for questions and assistance.

### How We're Preparing

- We have prepared two instructional frameworks for review.
- Our Division's School Health Coordinator believes the Blended AA/BB schedule with a Wednesday planning day gives the best opportunity to mitigate health concerns and clean facilities between groups.



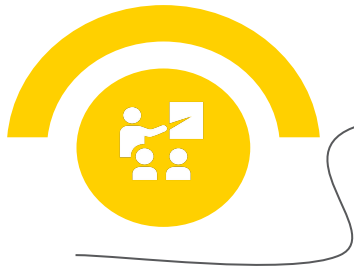
## Instructional Framework

# Instruction

Blended Schedule – A/B Daily with a Planning Day

Monday – Planning Day	Tuesday	Wednesday	Thursday	Friday
Curriculum Planning	Group A	Group B	Group A	Group B
Office Hours for Remote				
Learning Students				
Professional Development				



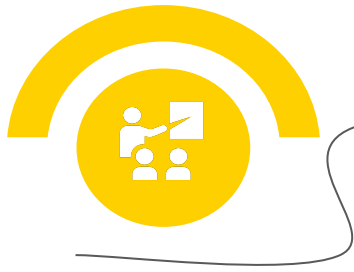


## Instructional Framework

# Instruction

Blended Schedule – AA/BB with a Planning Day

Monday	Tuesday	Wednesday – Planning Day	Thursday	Friday
Group A	Group A	Curriculum Planning  Office Hours for Remote Learning Students  Professional Development	Group B	Group B



# Instructional Framework

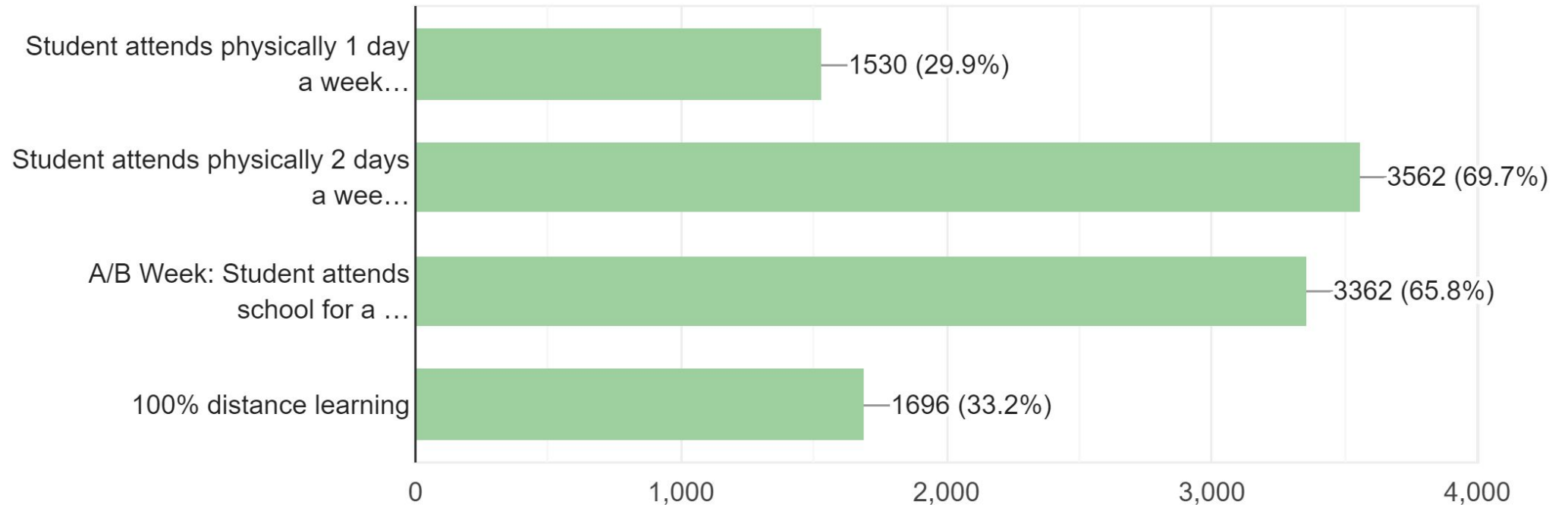
## Instruction

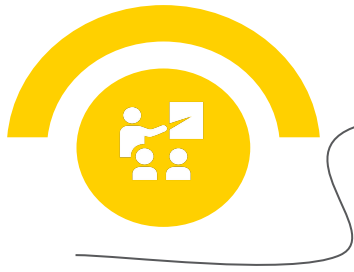
### Parent Survey:



What instructional schedules can you support? Check all that apply.

5,110 responses





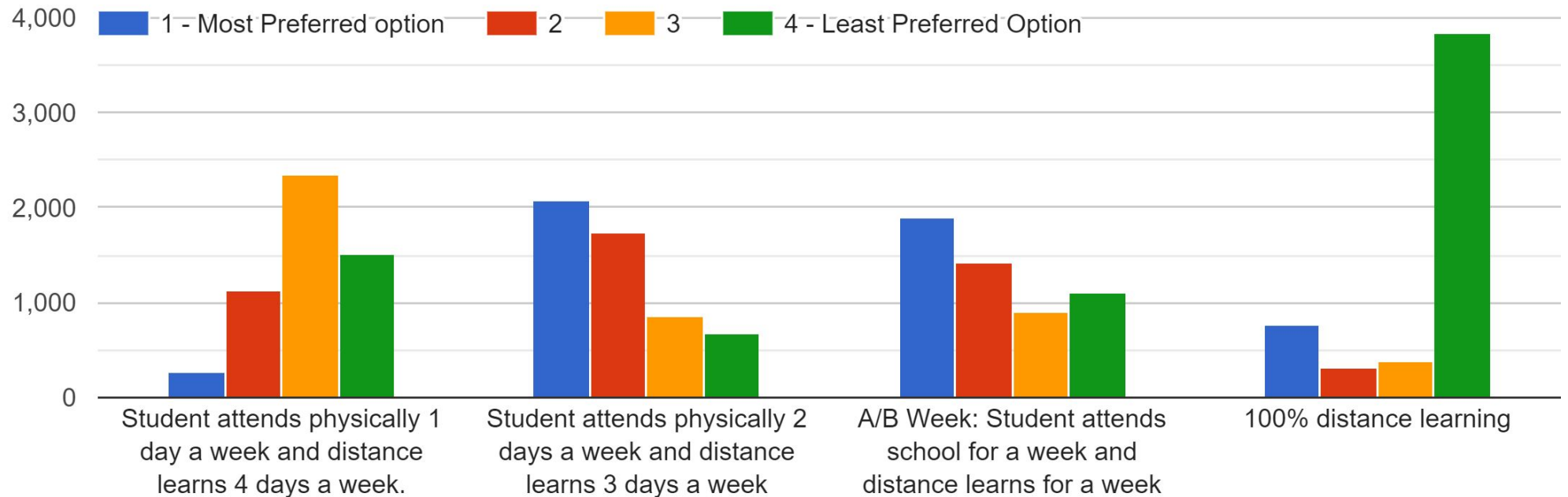
# Instructional Framework

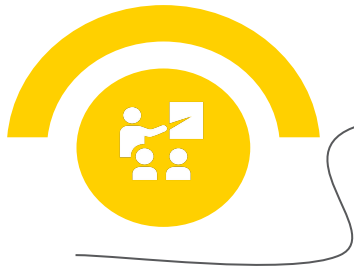
## Instruction

### Parent Survey:



Please rank your preference from the least preferred option to the most preferred option.





# Instructional Framework

## Instruction

### Staff Survey:



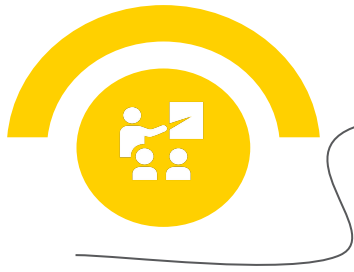
What instructional schedules can you support? Check all that apply.

**66%** - Student attends physically 2 days a week and distance learns 3 days a week.

**60.6%** - A/B Week: Student attends school for a week and distance learns for a week.

**40%** - 100% distance learning

**36.6%** - Student attends physically 1 day a week, distance learns 3 days a week



# Professional Learning Instruction

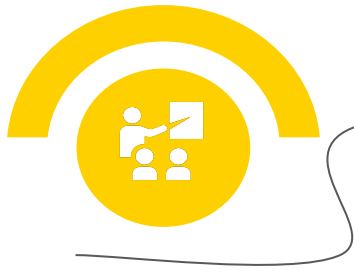
*Champion: Amy Acors*

## What We Know

- Intensive professional learning needed for potential blended instructional delivery and extensive training surrounding new safety protocols
- Additional days needed for professional learning at the beginning of the year
- Provide professional development to not only staff, but also students and their families. Family engagement will be crucial.

## How We're Preparing

- Draft calendar provides additional week of PD without extending the teacher contract by moving days to the beginning of the contract year.
- Summer offerings focus on equity, diverse needs of learners, social and emotional health, digital citizenship, best practices for assessment and online learning, student empowerment, the 5 Cs, PBL, and Profile of a Graduate.

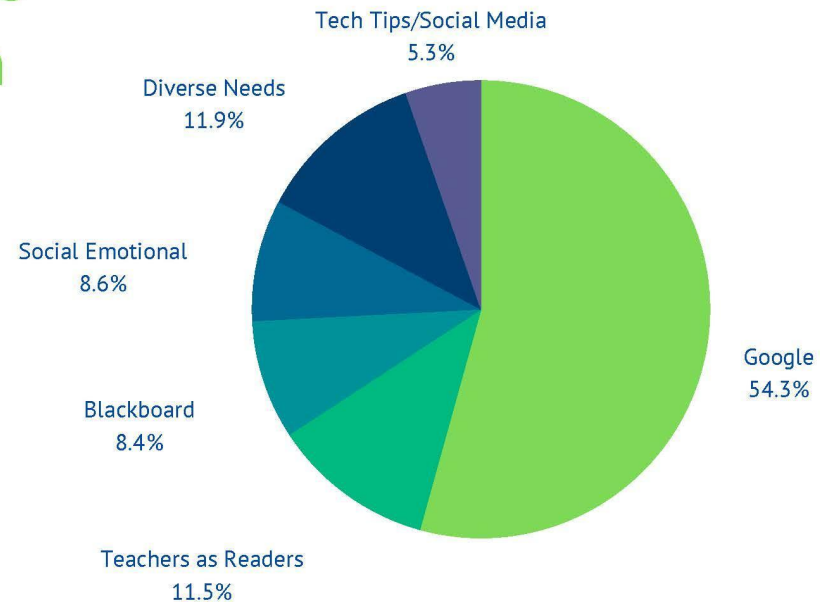


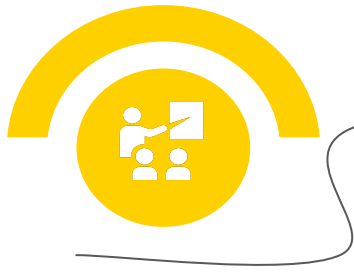
# Professional Learning Instruction

**FROM  
APRIL 1 TO  
JUNE 25**

**FCPS Educators  
participated in  
784 Events**

**Close to 3000  
hours of  
professional  
learning.**





## Technology - Devices

# Instruction

*Champion: Louis McDonald*

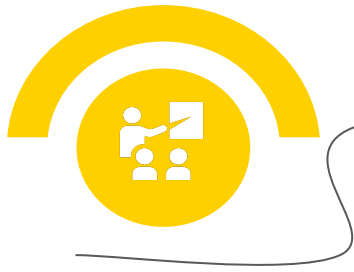


### What We Know

- We need to be ready for a blended learning model and the potential for a future shutdown.
- Our first goal is for all students to have access to a device for learning.
- Supply chain has slowed.
- Need to consider cost of ownership

### How We're Preparing

- FCPS will receive 6,875 **new** Chromebooks to supplement the existing 3,059.
  - Ordered 2200 additional Chromebooks
  - Will receive 4675 with the Coronavirus relief funds from the county.
- Initial focus is to move to 1:1 at all secondary schools



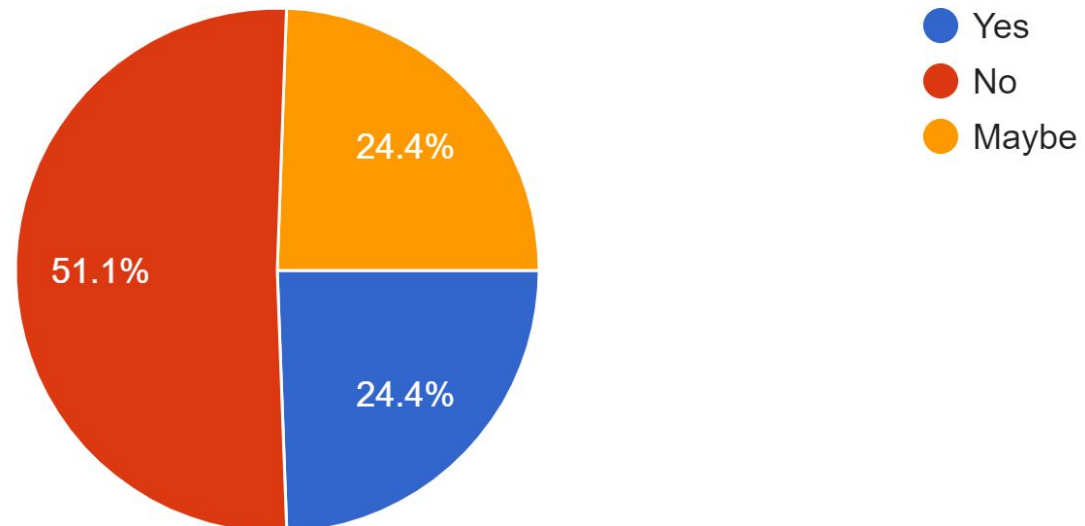
# Technology - Devices Instruction

## Parent Survey:

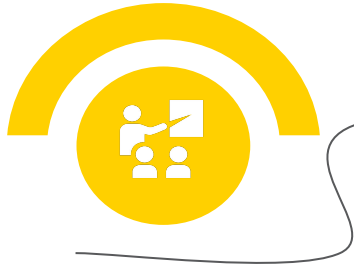


Would you be interested in checking out a device for your child/children for the upcoming school year?

5,569 responses







# Technology - Internet Access

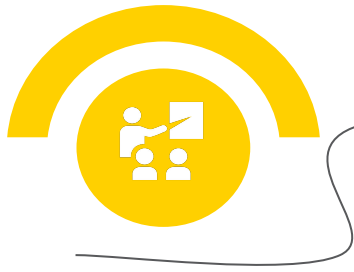
## Instruction

### What We Know

- Limitations for reliable internet access throughout the county
- Survey: 21.4% of parent respondents said they did not have adequate internet access.

### How We're Preparing

- Greatly increased our hotspot inventory from 84 to approximately 780
- Deployed 10 hotspot units on smart buses around the county.
- Boosting the school wifi signal at 4 locations (FHS, KRHS, LHS, MMS) to provide better access when outside the school. Looking into other locations also.

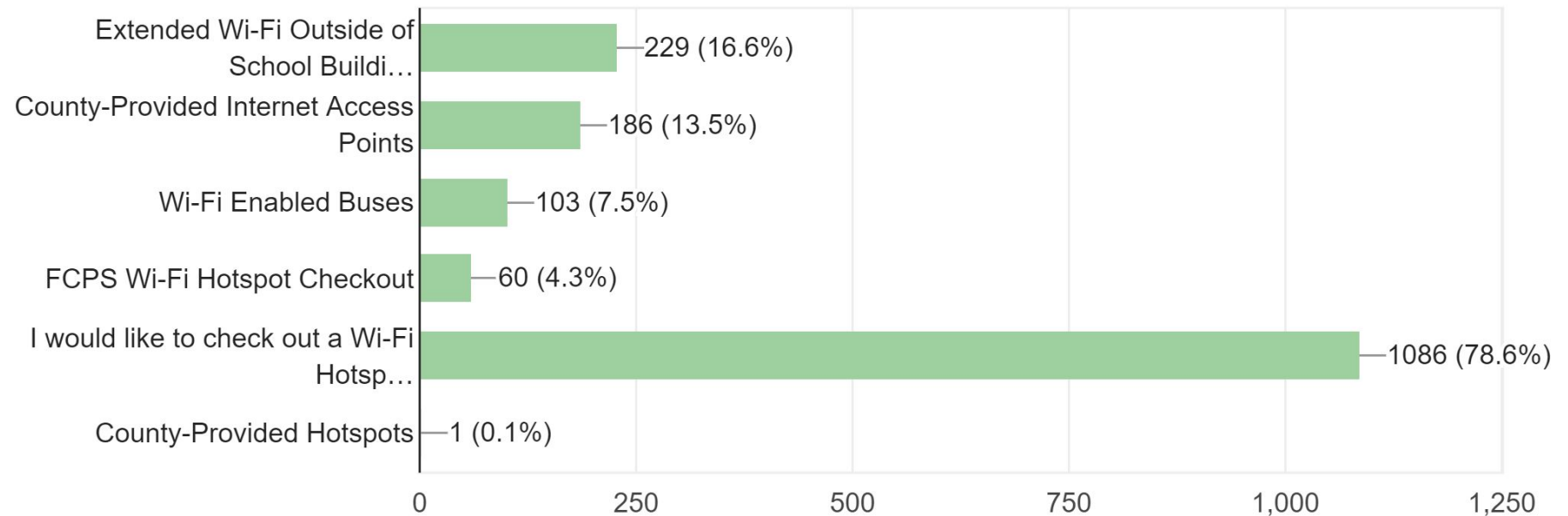


# Technology - Internet Access Instruction

## Parent Survey:



Did you take advantage of one of the following internet access offerings? (Check all that apply)  
1,382 responses





# Fauquier County Public Schools

## Path to Reopening



**Student Enrichment  
& Supports**



## Sports & Extracurricular Activities

# Student Enrichment and Supports

*Champion: Frank Finn*

### What We Know

- VHSL has issued guidelines for the reopening of sports and activities. The current focus is on preseason conditioning of student athletes.
- To proceed with preseason conditioning, FCPS must submit a mitigation health plan to VDOE.

### How We're Preparing

- Reviewing the health mitigation plans for athletics and activities from the 3 high schools with the local health department
- Once the health department vets our plans, we will submit a draft mitigation health plan for FCPS to VDOE that is only for the reopening of sports/activities associated with VHSL.



## Special Education

# Student Enrichment and Supports

*Champions: Frank Finn, Randy Corpening*

### What We Know

- Regulations governing special education in Virginia have not been waived. All timelines and requirements to provide a Free and Appropriate Education (FAPE) remain.
- It will be necessary for students with disabilities on the ASOL track to attend in person all days in which schools are open.
- Teachers for these classrooms will require additional PPE.

### How We're Preparing

- Students with disabilities accessing general education will follow the same schedule as their non-disabled peers.
- Special education case managers will assure that any virtual learning is accessible. Support will be provided for the student to have equal access.
- Any related services will be provided during the students' building access days.

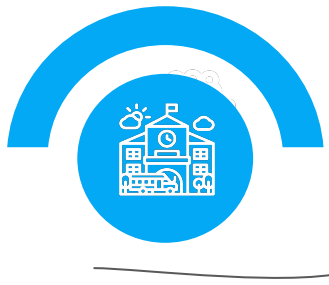


# Fauquier County Public Schools

## Path to Reopening

### Infrastructure





# Transportation Infrastructure

*Champions: Prashant Shrestha, David Graham, Cheryl Fisher*

## What We Know

- Logistical limitations – the number of buses, routing possibilities, drivers, fuel costs, etc.
- There will be costs to implement a plan without waivers, including additional pay/hours for drivers and staff if we need to socially distance to 10-12 per bus, supplies and manpower for proper cleaning, extra fuel costs.

## How We're Preparing

- An advisory group consisting of Finance, Facilities, Transportation, Nutrition, Health, Human Resources, and Special Education meets weekly to formulate a plan.
- A survey is being distributed to all drivers to determine their employment status for the 20-21 SY.
- Request made to purchase additional used buses



# Transportation Infrastructure



## Survey Results:

- Over 68% of parents reported their child/children will ride the bus to/from school at least sometimes.
- In a survey of parents of special education students, 68% reported they would transport their students to and from school.



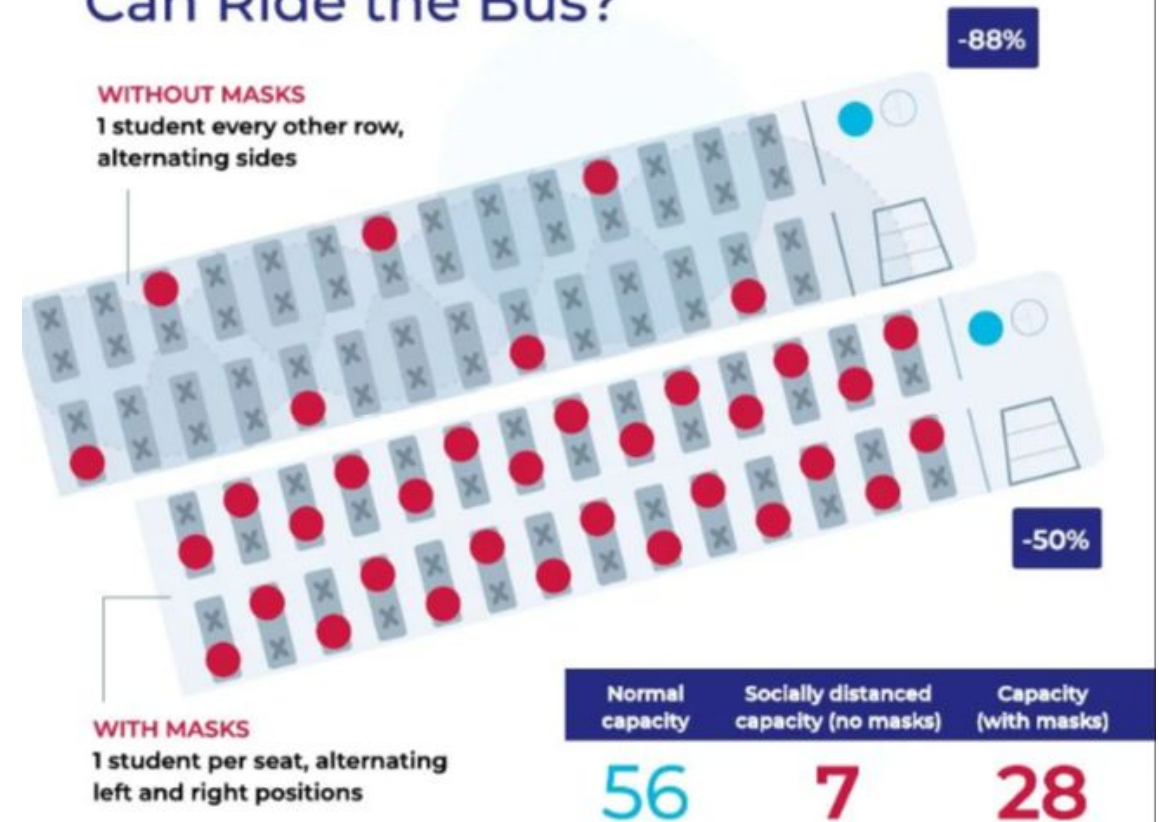


# Transportation Infrastructure

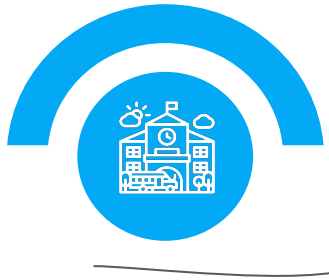
## Number of Passengers:

- Normal capacity= 56
- Socially distanced without masks - 7
- Capacity with masks - 28

## How Many Students Can Ride the Bus?



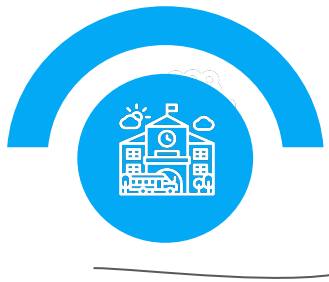
SOURCE: National Council on School Facilities and Cooperative Strategies



# Transportation Infrastructure

## **Our Recommendations:**

1. We request a waiver and implement a plan with one child per seat, with a mask.
2. Bus service would include cleanings between routes and other precautions at the time of delivery in coordination with facilities protocol (i.e. single-file lines 6-ft apart, hand sanitizer station at school, safety rules while in transit, etc.)



# Facilities Infrastructure

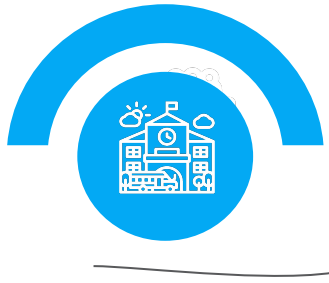
*Champions: Prashant Shrestha, David Graham, Tom Edwards*

## What We Know

- Implement strict protocols to remain at safe distances.
- Perform additional tasks to keep the building clean and safe.
- Enhanced mid-day and deep mid-week cleaning services is recommended. This will have a cost impact.
- Costs exist to implement a plan without waivers.

## How We're Preparing

- Evaluating contractual services and purchasing additional cleaning and safety equipment for schools.
- Implementing facility modifications including hand sanitizer stations, 6-feet apart floor markers.
- Classrooms will be set up to maintain 6-feet separation. Plexiglass shields will be installed in offices, cafeterias and other "high traffic" areas.



# Facilities Infrastructure

**FCPS elementary  
classroom  
showing 6- feet  
social distancing**

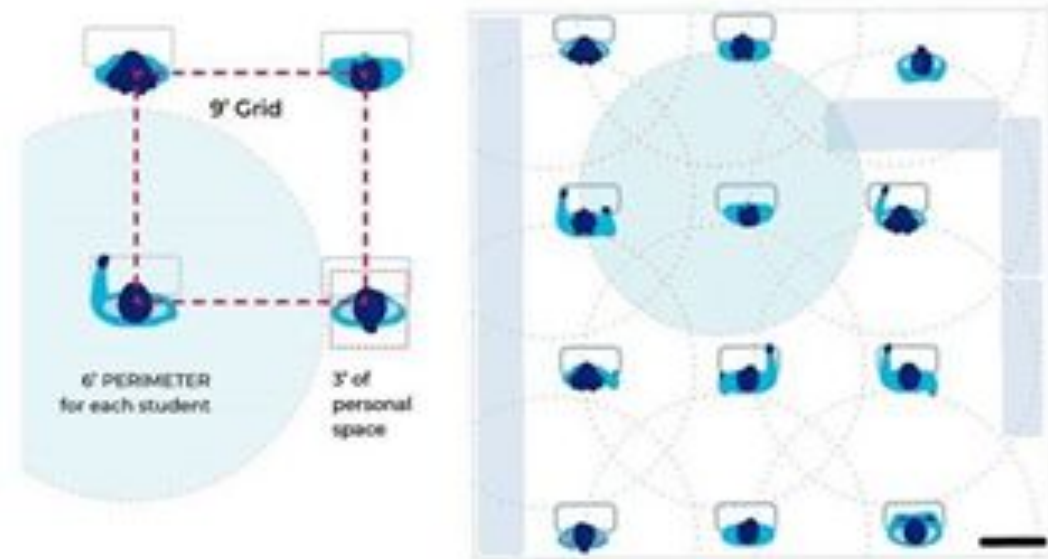




# Facilities Infrastructure

**An instructional space with  
a normal capacity of 31  
drops to a capacity of 12  
with social distancing.**

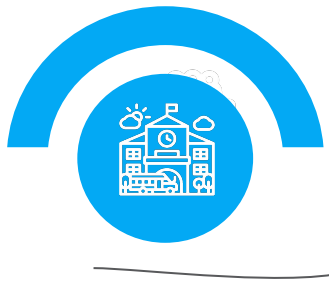
## Arranging Instructional Spaces



	Normal capacity	Socially distanced capacity
Example: 960 square feet (30' x 32' room, with furniture)	31	12

SOURCE: National Council on School Facilities and Cooperative Strategies

Icons: iStock/Getty



# School Nutrition Infrastructure

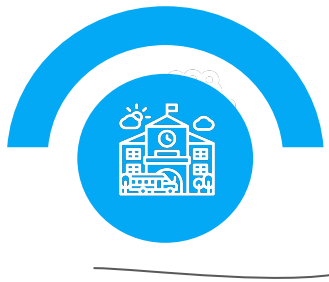
*Champions: Prashant Shrestha, David Graham, April Plummer*

## What We Know

- Expanding meal programs to include in-school feeding and community feeding simultaneously would require resources and partnerships.
- Student training is necessary to reinforce proper handwashing techniques and to discourage sharing of food.
- Training for staff is necessary to ensure safe food preparation and food handling.

## How We're Preparing

- Worked with surrounding jurisdictions to gather best practices for implementation. Feeding in the classrooms is the prominent plan for the general population, along with using disposable products.
- Hired new Director for School Nutrition and will hire the assistant next. A transition plan will be implemented.



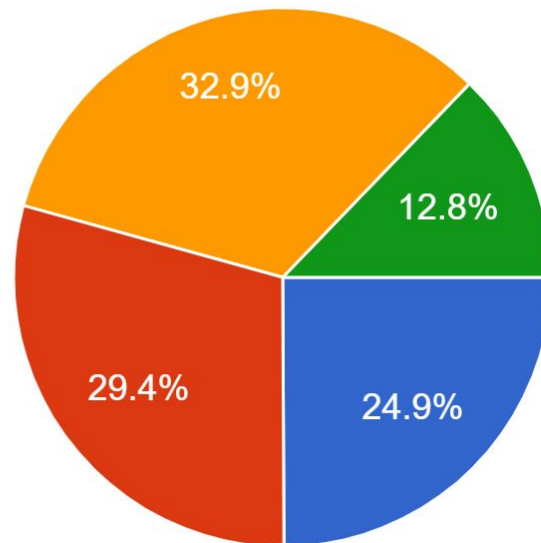
# School Nutrition Infrastructure

## Parent Survey



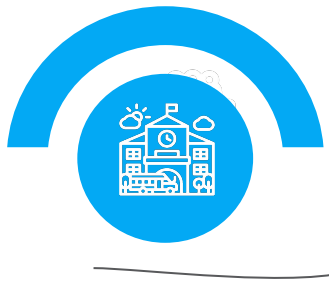
Do you plan to have your child / children buy LUNCH from the school cafeteria when school reopens in the fall?

5,576 responses



- Yes, every day or most days.
- No, never or only occasionally.
- My child will sometimes pack lunches and sometimes buy school lunches.
- I'm unsure at this time.





**Childcare**

**Infrastructure**

*Champion: Frank Finn*

## **What We Know**

- Provision of childcare has been an ongoing topic of discussion in state-level meetings.
- Childcare will be an issue for some employees since children may not be at school every day once school reopens.

## **How We're Preparing**

- Contacting community partners to determine feasibility of providing childcare during the school day
- Working with facilities and building administrators to assess the availability of adequate space in schools to allow for the provision of childcare
- Consideration of additional resources such as personnel, PPE





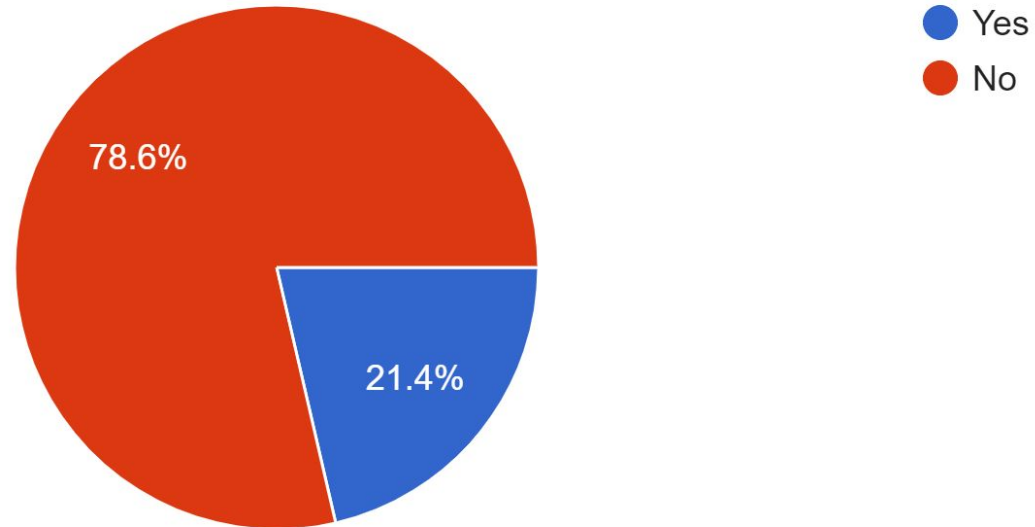
# Childcare Infrastructure

## Staff Survey



Do you anticipate needing childcare if students are not physically attending school every day?

1,544 responses





# Fauquier County Public Schools

## Path to Reopening



**Communication**



# Communication

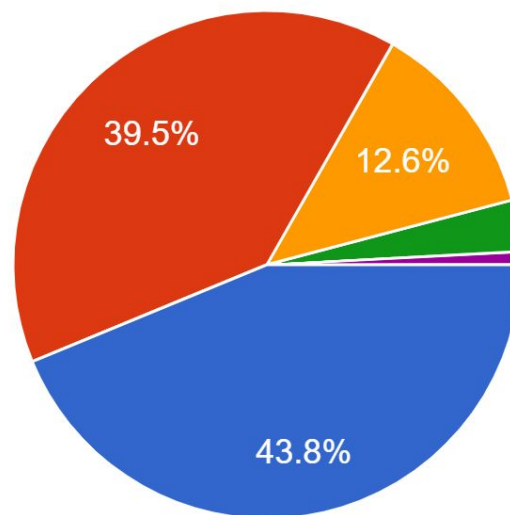
*Champion: Tara Helkowski*

## Staff Survey



I am satisfied with the communication from the school division/superintendent.

1,583 responses



- Strongly agree
- Agree
- Neutral
- Disagree
- Strongly disagree



# Communication

## What We Know

- Effective communication will be more critical than ever to ensure a safe reopening of schools.
- Divisions and their schools are expected to write communications plans for reopening.
- Communication timing, frequency, and content needs to be coordinated from the division, school, and teachers.

## How We're Preparing

- Wrote **FCPS 'Path to Reopening' Communications Plan** focusing on:
  - streamlining & consistency in messaging
  - gathering stakeholder input
- Publish weekly updates through superintendent's video and *FCPS Highlights* newsletter.
- Administered stakeholder surveys, arranging focus group conversations
- Will assist schools creating their communications plan (share template)



# Fauquier County Public Schools

## Path to Reopening

### Our Recommendations:

1. Move the first day of school for students from August 12 to August 19.
2. Implement a blended instructional framework consisting of two days of face-to-face learning, two days of distance learning, and one day of instructional planning and student support per week.
3. Submit a notification of intent to vary as needed to mitigate health guidelines.

