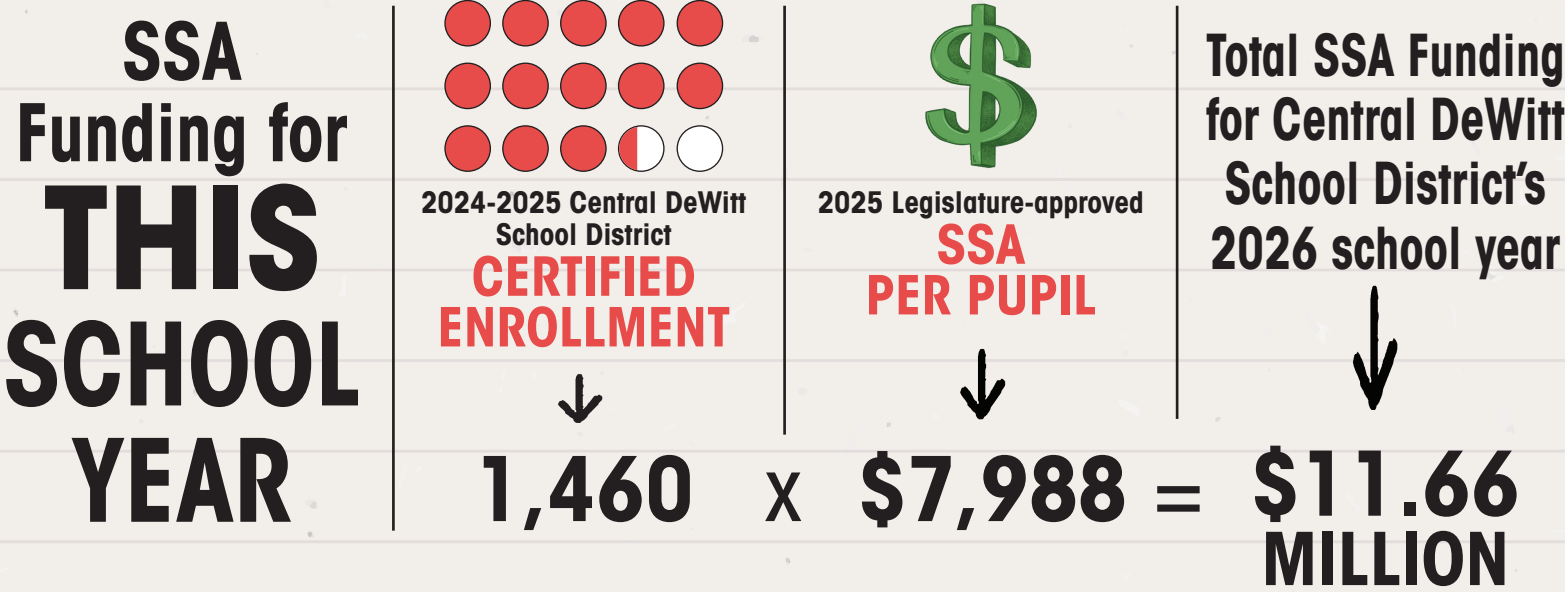
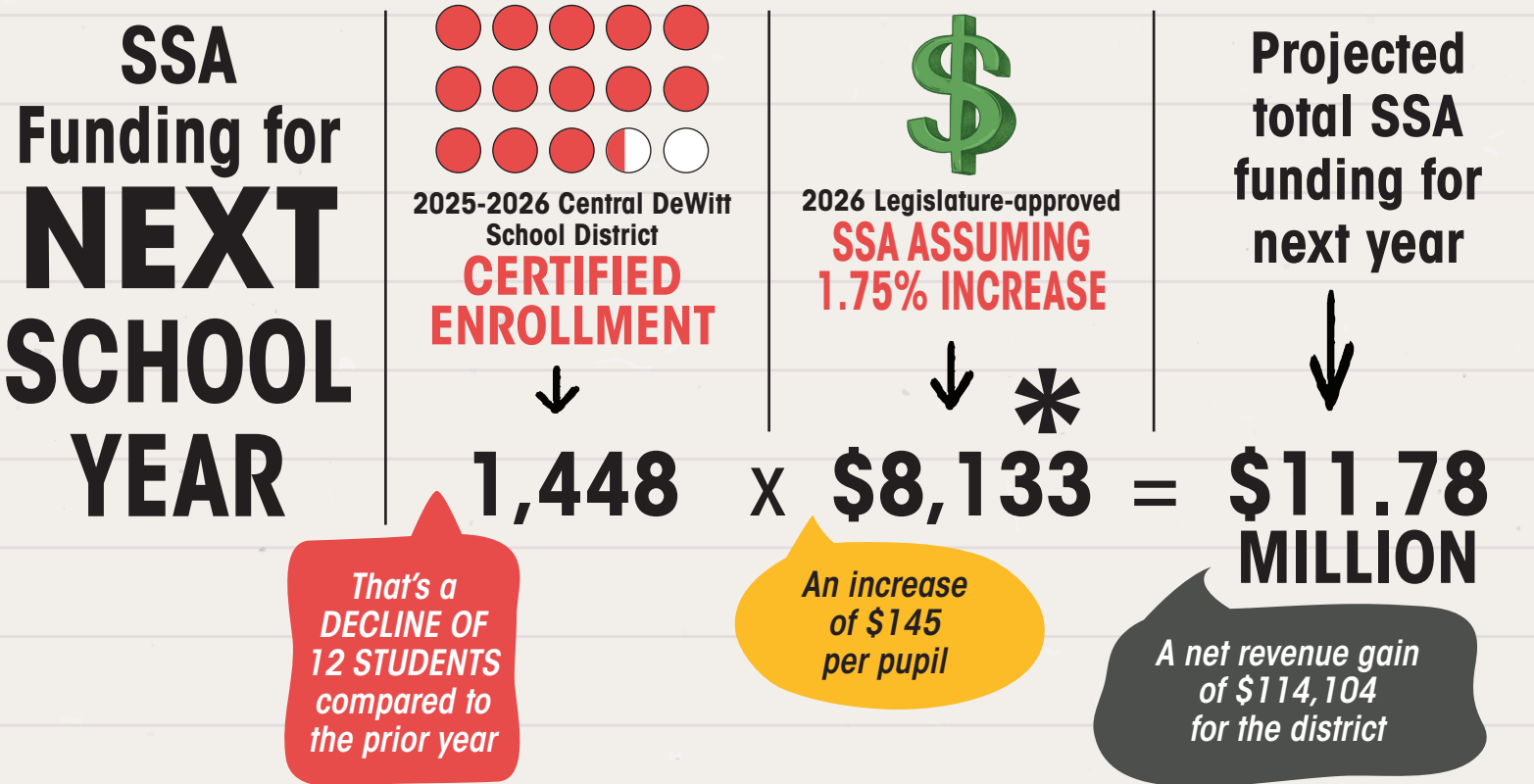


The Central DeWitt Community School District, state funding and property tax rates...

HOW THIS GRAPHIC WORKS: This graphic explains the relationship between school enrollment and Supplement State Aid (money the Iowa Legislature provides school districts, known as SSA) and how the two could affect the Central DeWitt Community School District's finances and local property tax rates. It also shows what a 1.75% SSA increase for the 2026-2027 school year, which the Iowa Senate approved last week, could mean for educators, students and taxpayers.



The information below shows how the Central DeWitt Community School District's drop in certified enrollment this school year and a 1.75% increase in SSA would affect the district's finances next year.



* Includes additional \$5 per student approved by Iowa Senate.