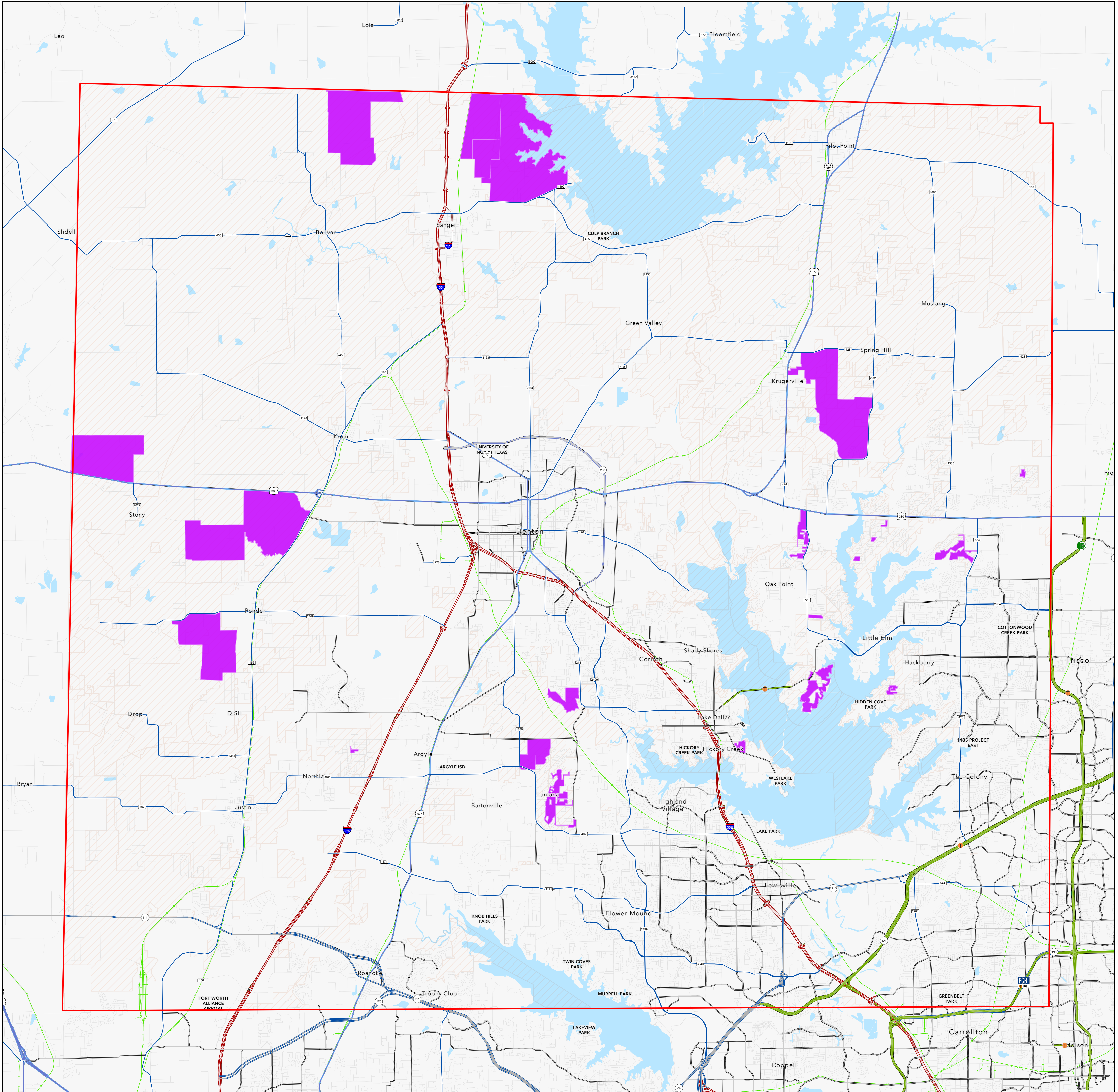


# DENTON COUNTY - CASPER 2024



Andy Eads - County Judge  
 Ryan Williams - Commissioner Precinct 1  
 Kevin Falconer - Commissioner Precinct 2  
 Bobbie J. Mitchell - Commissioner Precinct 3  
 Dianne Edmondson - Commissioner Precinct 4

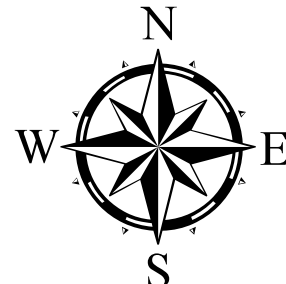
- INTERSTATE
- U.S. HIGHWAY
- STATE HIGHWAY
- FARM TO MARKET
- MAJOR THOROUGHFARES
- MINOR ROADS
- RAILROADS
- AIRPORTS
- LAKES & PONDS

**City Population (2022)**  
 Denton > 150,000  
 Lewisville 100,000 - 150,000  
 Flower Mound 50,000 - 100,000  
 Coriath 5,000 - 50,000  
 Ponder < 5,000

### Legend

- Cluster Boundary
- Denton County Boundary
- Unincorporated Area

NAD 1983 StatePlane  
 (Zone 5351)  
 Texas North Central  
 Lambert Conformal Conic



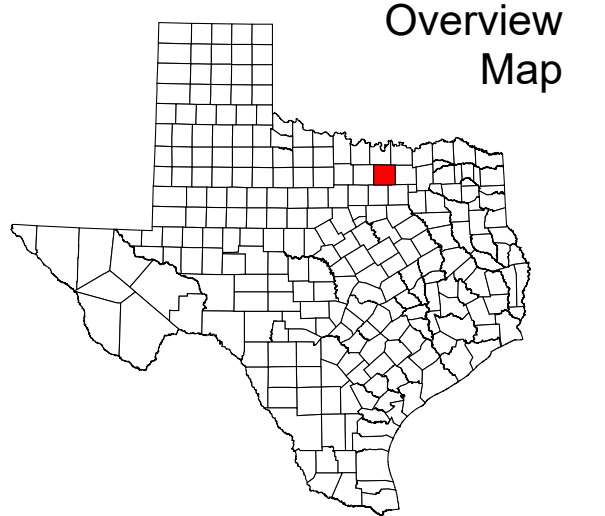
Scale: 1:100,000  
 0 0.5 1 2  
 Miles

March 25, 2024

This product is for informational purposes and may not have been prepared for or be suitable for legal, engineering, or surveying purposes. It does not represent an on-the-ground survey and represents only the approximate relative location of property boundaries.

Denton County does not guarantee the correctness or accuracy of any features on this product and assumes no responsibility in connection therewith. This product may be revised at any time without notification to any user.

CONTACT INFORMATION  
 LANDMARK MAP: gis.dentoncounty.gov  
 E-MAIL: gis@dentoncounty.gov



Overview Map