

Stephens Takes Homecoming Queen Crown

Shirley Stephens smiled Friday night. And so did Texas Techsians in approval of their 1960 Homecoming queen and in anticipation of the annual round of Homecoming events.

With the well-illuminated Science Bldg. as a backdrop, Miss Stephens walked down the steps to the strains of "Dream" and took the throne as Tech's first Southwest Conference Homecoming queen.

Escorted by Bob McGough, senior class president, the dark-haired, bright-eyed beauty was crowned by Bill Dean, Student Assn. president.

Dressed in red satin, the senior cheerleader and member of Pi Beta Phi, was presented roses by Charles Draper, Saddle Tramps representative.

Members of the royal court are Janice Cobb, Beth O'Quinn, Beverly Quintanilla and Joyce Tallman.

In alphabetical order, each finalist walked down the Science Bldg. steps escorted by class presidents and Tony Gustwick, Homecoming committee chairman, to the tune of their favorite song.

Janice Cobb walked to the music of "La Vie en Rose." She was followed by Beth O'Quinn, dressed in an aqua gown, Beverly Quintanilla in a blue formal, Miss Stephens and Joyce Tallman.

Following the presentation by J. C. Chambers, a director of the Ex-Students Assn., the queen and her attendants, flanked by the Tech Band playing the Matador Song, paraded down the long walk for the royal procession, then back up the stairs and out of sight ending the coronation.

The queen, a three-year class secretary, was sponsored by Bledsoe Hall, Pi Beta Phi and Sigma Alpha Epsilon. She was a finalist in the 1959 Homecoming queen contest.

Miss Cobb was sponsored by the Baptist Student Union. She is a member of Gamma Phi Beta sorority.

Entered by Pi Kappa Alpha, Miss O'Quinn belongs to Alpha Chi Omega and is a cheerleader.

Men's 8 sponsored Miss Quintanilla, a Zeta Tau Alpha and La Ventana beauty.

Miss Tallman, a member of Sigma Kappa, was sponsored by her sorority.

Preliminary finalists for Homecoming queen were Carolyn Calvert, Pepper Connelley, Ann Fursman, Janis Jones, Judy Jensen and Karen Wright.

The coronation followed a 7 p.m. pep rally Friday at which an effigy of the SMU Mustang was burned by E. J. Holub and Don Waygood, Tech football captains. The crowd then moved from the Saddle Tramp circle to the scene of the coronation in a snake dance as the band played "Arkansas Traveler."

★ ★ ★

Shirley Stephens, 1960 Homecoming queen, stands in the center. Her attendants, from left, are Beverly Quintanilla, Beth O'Quinn, Joyce Tallman and Janice Cobb.



Stephens Takes Homecoming Queen Crown

Shirley Stephens smiled Friday night. And so did Texas Techsians in approval of their 1960 Homecoming queen and in anticipation of the annual round of Homecoming events.

With the well-illuminated Science Bldg. as a backdrop, Miss Stephens walked down the steps to the strains of "Dream" and took the throne as Tech's first Southwest Conference Homecoming queen.

Escorted by Bob McGough, senior class president, the dark-haired, bright-eyed beauty was crowned by Bill Dean, Student Assn. president.

Dressed in red satin, the senior cheerleader and member of Pi Beta Phi, was presented roses by Charles Draper, Saddle Tramps representative.

Members of the royal court are Janice Cobb, Beth O'Quinn, Beverly Quintanilla and Joyce Tallman.

In alphabetical order, each finalist walked down the Science Bldg. steps escorted by class presidents and Tony Gustwick, Homecoming committee chairman, to the tune of their favorite song.

Janice Cobb walked to the music of "La Vie en Rose." She was followed by Beth O'Quinn, dressed in an aqua gown, Beverly Quintanilla in a blue formal, Miss Stephens and Joyce Tallman.

Following the presentation by J. C. Chambers, a director of the Ex-Students Assn., the queen and her attendants, flanked by the Tech Band playing the Matador Song, paraded down the long walk for the royal procession, then back up the stairs and out of sight ending the coronation.

The queen, a three-year class secretary, was sponsored by Bledsoe Hall, Pi Beta Phi and Sigma Alpha Epsilon. She was a finalist in the 1959 Homecoming queen contest.

Miss Cobb was sponsored by the Baptist Student Union. She is a member of Gamma Phi Beta sorority.

Entered by Pi Kappa Alpha, Miss O'Quinn belongs to Alpha Chi Omega and is a cheerleader.

Men's 8 sponsored Miss Quintanilla, a Zeta Tau Alpha and La Ventana beauty.

Miss Tallman, a member of Sigma Kappa, was sponsored by her sorority.

Preliminary finalists for Homecoming queen were Carolyn Calvert, Pepper Connelley, Ann Fursman, Janis Jones, Judy Jensen and Karen Wright.

The coronation followed a 7 p.m. pep rally Friday at which an effigy of the SMU Mustang was burned by E. J. Holuh and Don Waygood, Tech football captains. The crowd then moved from the Saddle Tramp circle to the scene of the coronation in a snake dance as the band played "Arkansas Traveler."

★ ★ ★

Shirley Stephens, 1960 Homecoming queen, stands in the center. Her attendants, from left, are Beverly Quintanilla, Beth O'Quinn, Joyce Tallman and Janice Cobb.



Gala Homecoming Slated Saturday

Alumni are arriving here today to attend what is expected to be one of the largest Homecoming "get-togethers" in Texas Tech since pre-war days. Due to wartime travel restrictions previous alumni homecoming plans have

homecoming games, this occasion will honor all servicemen, veterans and exes.

Tentative plans have been made by the student body for their participation in homecoming events. The Saddle Tramps, who are in charge of the bonfire preparations, have secured an ample supply of lumber from Lubbock Army Air field and scrap paper from the Tech Library to start things off with a big roar tonight.

From The Toreador . . .
1945

been somewhat limited. Now with these restrictions disbanded fewer complications are in order, thus enticing a new spirit that should push this celebration to an all-time high.

Since this is Tech's 20th annual homecoming observance and because so many alumni have not been able to attend the last three

The gymnasium has been designated as headquarters for all homecoming activities. Festivities will begin there at 10 a.m. and will hold sway until 2:30 p.m. game time. Tech seniors will be at the gym to pin identification tags on all alumni and ex-students.

Enrollment Nears 2,200; Registration Continues

That a considerable increase in the total enrollment of the college will result from the registration for the winter term is indicated by approximate figures obtained

From The Toreador . . .
1930

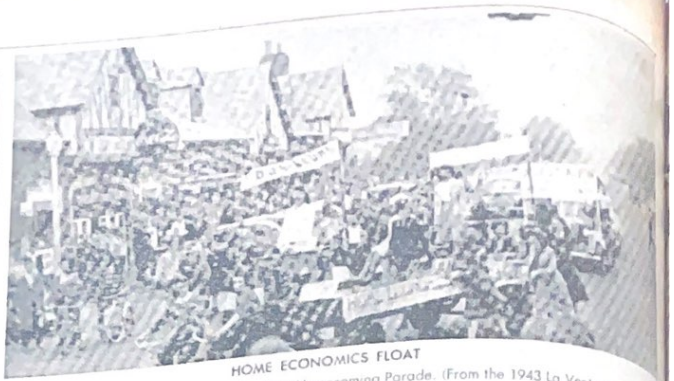
from the registrar's office: these figures show that the year's enrollment is now very near to 2,200.

Due to the necessarily compli-

cated system of registration, the exact figures for the winter registration will not be available for several days. The majority of the students completed registration Thursday, but many others were registering Friday and Saturday, and the registrar's and business

offices are still busy in registering late-comers and others this week.

The total enrollment for the year 1928-29 was 2,088, a figure that was almost equalled in the 2,050 students enrolled for the fall term alone in the current school year.



HOME ECONOMICS FLOAT

... comes up Broadway in the 1942 Homecoming Parade. (From the 1943 La Ventana)

Homecoming Neareth

By LOTTA BESS BALDWIN
Toreador Staff Writer

And lo it came to pass that on the 10th day of November in the year 1945 a certain man from the

From The Toreador . . .
1945

plains returned to the institution of higher learning where in his youth he spendeth many happy hours. And lo, many changes had been wrought.

In the days of yore the women round and about the campus were few in number and the dress was simple and the skirt long. Now in these days the coeds cometh in great numbers and they shorteneth their garments. And corruption was wrought by the adher-

ence to tobacco and other harmful things. They toil not, neither do they spin and yea, verily, bags hangeth under their eyes and lines creatheth their faces. Sleep cometh not, and the days are long.

And in his time, those in power persecuteth the underlings, in slaying and torturing them in mauling ways, and the underlings sheweth their respect. They forbideth them to sit on the bench of the Double T and to tread on the walks of the side. Now the time is come when respect sheweth itself no more. The underlings wear the green cap, but no longer do they subject themselves to honorable sacrifices for their betters.

The buildings they grey with age, and the only changes not brought about art in the museum

... it remaineth without a change. The halls are marked with the tables beareth signs of previous years. The chairs breaketh when one sitteth down, and the campus without his peneth the gent searchings. The Legislature addeth a building now and then, but they are not numerous.

They planted trees and flowers, the campus they beautify. Growth treadeth not. They buildeth the Guich and Foxhole Alley. And Grove remaineth the meeting place for campusology majors.

The Toreador appeareth twice as in days of yore, but cometh with age.



Remember Tech

HOMECOMING

with

STUFFED ANIMALS

SORORITY
BLANKETS

to fit around the neck of all animals. Give a stuffed animal to fit all personalities.

WE ALSO CARRY T-SHIRTS,
SWEAT SHIRTS, AND PANTS

BOOK & STATIONERY

CENTER

1103 College

PO 5-5775



BUY TECH ADS

campus character:



PSAMUEL PSYCHE

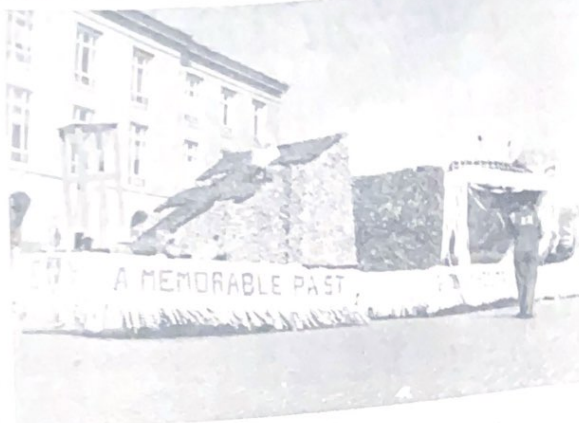
A thinking man's thinking man, Psamuel finds that thoughts come easiest when he is most comfortable.

That's why he always wears Jockey brand T-shirts. He likes the way the fine combed cotton feels next to his skin. He likes the way the twin-stitched, nylon-reinforced collar keeps its shape. And he likes the full-proportioned body and extra long tail that never creeps.

You, too, will like yourself better when you enjoy the comfort of Jockey brand T-shirts. Your favorite campus store has them. \$1.50

COOPER, INCORPORATED - PENNSA, WIL

Jockey
T-shirts



HOMECOMING WINNERS — The four floats pictured won top prizes in Saturday's Homecoming float competition. At the top is the sweepstakes winner entered by Sigma Chi, entitled "Memorable Past, Dramatic Present and Glorious Future." Above left is the fraternity winner, Sigma Alpha Epsilon's "Tech Grows And Grows And Grows." Above right is the all-campus winner, "Champs," entered by the American Society of Agricultural Engineers. Right is Kappa Alpha Theta's "Cotton Patch to Conference," winner in the sorority division.



Armistead' Vision-Reading Center

Speed Reading & Visual Training For Adults
1613 Av. Q PO2-8769

\$10 certificate of clothes

To be given away with the . . .

Sponsored by BROWN'S VARSITY

Arkansas	A&M
Auburn	Florida
Baylor	T.C.U.
Brown	Princeton
California	Oregon St.
Dartmouth	Yale
Duke	Georgia Tech.
Iowa	Kansas
Oklahoma	Colorado
S.M.U.	Texas

(TIE BREAKER)

Rice Tech

Entries must be in our store FRIDAY 6:00 p.m.

FOOTBALL CONTEST

Last week's winner: Harry M. Marsh

RULES: Pick the team you think will win and mark "X" after its name. Or if you think the game will end in a tie, put your "X" in both columns. At the bottom you'll find a tie breaking game listed. Indicate the score you predict for this game. In case of tie the winner will be the contestant who gives the score nearest to the actual outcome of the game.

Name _____
Address _____
City _____
Telephone _____

THE FANTASTIC LIONEL HAMPTON

and his international orchestra and
FAIR PARK COLISEUM, NOV. 3, 8 p.m.

Tickets on Sale at Wayne's Record Store
\$2.50 — PRESALE \$3.00 — AT 7

BUY TECH ADS

campus
character:



PSAMUEL PSYCHE

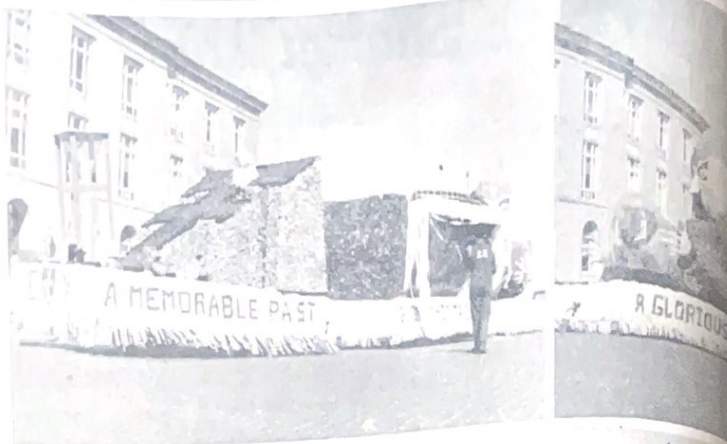
A thinking man's thinking man, Psamuel finds that thoughts come easiest when he is most comfortable.

That's why he always wears Jockey brand T-shirts. He likes the way the fine combed cotton feels next to his skin. He likes the way the twin-stitched, nylon-reinforced collar keeps its shape. And he likes the full-proportioned body and extra long tail that never creeps.

You, too, will like yourself better when you enjoy the comfort of Jockey brand T-shirts. Your favorite campus store has them. \$1.50

GOOFER, INCORPORATED - KENOSHA, WIS.

Jockey
T-shirts



HOMECOMING WINNERS — The four floats pictured won top prizes in Saturday's Homecoming float competition. At the top is the sweepstakes winner entered by Sigma Chi, entitled "Memorable Past, Dramatic Present and Glorious Future." Above left is the fraternity winner, Sigma Alpha Epsilon's "Tech Grows And Grows And Grows." Above right is the all-campus winner, "Champs," entered by the American Society of Agricultural Engineers. Right is Kappa Alpha Theta's "Cotton Patch to Conference," winner in the sorority division.



Armistead' Vision-Reading Center

Speed Reading & Visual Training For Adults
1613 Av. Q PO2-8769

\$10 certificate of clothes

To be given away with the . . .

Sponsored by **BROWN'S VARSITY**

Arkansas	A&M
Auburn	Florida
Baylor	T.C.U.
Brown	Princeton
California	Oregon St.
Dartmouth	Yale
Duke	Georgia Tech.
Iowa	Kansas
Oklahoma	Colorado
S.M.U.	Texas

(TIE BREAKER)

Rice Tech

Entries must be in our
store FRIDAY 6:00 p.m.

FOOTBALL CONTEST

Last week's winner: Harry M. Marsh

RULES: Pick the team you think will win and mark "X" after its name. Or if you think the game will end in a tie, put your "X" in both columns. At the bottom you'll find a tie breaking game listed. Indicate the score you predict for this game. In case of tie the winner will be the contestant who gives the score nearest to the actual outcome of the game.

Name _____
Address _____
City _____
Telephone _____

THE FANTASTIC

LIONEL HAMPTON

and his international orchestra and
FAIR PARK COLISEUM, NOV. 3, 8 p.m.

Tickets on Sale at Wayne's Record Shop
\$2.50 — PRESALE \$3.00 — AT DOOR

Congress ignores Reagan's tax plan

The ongoing Democratic-controlled House has on a final "lame-duck" session, but the House has not even brought a measure House Speaker Carl Albert (D-Texas) was prepared to introduce.

buried — at least until 1981 — when Senate Democrats voted in a closed-door caucus against bringing it to the Senate floor. At the same time, O'Neill told reporters that he had discussed the tax-cut proposal with Carter in a Monday evening phone conversation.

"The president told me he would veto a tax bill were it to reach his desk. He said it would be inflationary," O'Neill said.

Thus, Republicans will apparently have to wait until next year before pushing the kind of tax cut that Reagan has made the centerpiece of his economic program.

"We felt Mr. Reagan ought to have his time at bat," Senate Majority Leader Robert C. Byrd told reporters after the Senate caucus vote.

Byrd had previously favored an immediate tax cut, but said he changed his mind after talking to the president and assessing the situation in the House — where there never was much support for the tax cut proposal.

Democratic leaders said they anticipated the lame-duck session would be over in several weeks, probably shortly after Thanksgiving.

No major new legislation is expected to be approved, beyond needed budget and appropriations bills and several measures already well on the way toward passage, O'Neill said.

Meanwhile, the speaker, who becomes his party's highest ranking elected official once Republicans take over both the White House and the Senate in January, and rebuilding the

Democratic Party would require a "dynamic figure" as party chairman.

He did not mention the current chairman, John C. White, who has indicated he would like to stay on. O'Neill aide Gary Hymel said the speaker's remarks weren't intended as a slap at White.

The Senate began the lame-duck session by taking up a \$9.57 billion appropriation bill for several federal departments while the House debated a proposed extension of government's revenue sharing program, which expired last Oct. 1.

Major bills that must be approved before Congress can quit for the year all involve federal spending. This includes a federal budget document for fiscal 1981 and 10 separate appropriations bills to allow major federal agencies to keep paying bills.

Mayors to draft urban agenda

Thomas Muller, an economist with The Urban Institute, a Washington-based research organization.

But the conservative shift does signal a change in the relationships America's cities have had with the federal government.

"It'll be much more difficult for a city to receive preferential treatment under Reagan and the conservative Congress," said Muller. "There will be fewer city voices in Congress, and the argument is going to be that by improving the economic climate in general, the cities should have no need for special assistance. And if they do, it's probably because of their own mismanagement."

Some possible elements of a Reagan urban program include:

- Mass transit: Reagan has said mass transit should be funded with local taxes.
- Inner cities: Reagan has proposed tax incentives for minority businesses, and has suggested designating run-down business areas as "Enterprise Zones," where businesses could operate with a minimum of government interference, and with lower taxes.
- Housing: Reagan has favored programs under which homes could be bought at low cost by those willing to fix them up and live in them. Such programs have existed for some time.



Texas leads effort for regional primary

AUSTIN (AP) — Gov. Bill Clements said Wednesday Texas leads an effort for a regional presidential primary that would control one-fifth of the electoral votes needed to elect a U.S. president.

"This will give us a position in the presidential election process that we do not have now," said Clements, who successfully guided the Reagan-Bush campaign in Texas.

The Northeast and the Eastern seaboard have an unusual effect now with their early primaries, Clements told a news conference. "This (regional primary) would assure us of the important role we deserve."

He said present plans, which are being drafted into a state law to be presented to the 1981 Texas Legislature, call for a five-contest regional primary in March, and not connected with any other local or state elections.

The 1980 presidential primaries in Texas were held in connection with the local and state contests.

Clements said the governors of Texas, Arkansas, Louisiana and Oklahoma — had been contacted.

"With the possible exception of the governor of Arkansas, the others appear favorable to the concept. We have just started," he said.

Clements said the regional primary idea had been approved by Lt. Gov. Bill Hobby and Speaker Bill Hobby.

Clements, Texas' first GOP governor this century, said it is possible that by 1984 there would be only six or seven regional primaries. "Instead of the hedge-podge we have now."

Clements leaves Thursday night for two days of talks in California with President-elect Ronald Reagan's staff. He has a personal talk scheduled for Sunday with Reagan.

"I have no agenda. I have no information what he wants to talk to me about."

Clements said. "I am going at his invitation."

He said if he asked for suggestions "you can be sure the Gov. (John) Connally will be on my list for a senior position with the Reagan administration."

Clements also said he planned to reintroduce in the 1981 Legislature a constitutional change to give the governor more budget control over state agencies. It was one of two proposed amendments voted down Nov. 4. Seven others were approved.

"I do not know of anyone who was strongly opposed to that amendment," he said. "Why it got turned down, I don't understand. The only thing I can come up with is the wording on the ballot. I really do not see any need for a major change in the proposition. Maybe we can rephrase the wording for the ballot so it would be clearer to the constituency."

The five states proposed for the regional primary not only would have a strong voice in selecting Democratic and Republican presidential candidates, they would have 54 electoral votes in the general election. A total of 270 votes is needed for election.

Texas has 26 electoral votes, Louisiana 10, Oklahoma 8, Arkansas 6 and New Mexico 4.

The five states have a total voting age population of about 17 million.

On other subjects, Clements said:

- He has had no reply from federal authorities to his Oct. 14 letter asking for a permit extension to develop a deepwater port for Texas.

- He disagreed with the statement of a conservative organization that it considered Sen. Lloyd Bentsen, D-Texas, a "liberal." Clements said, "He has always been that in the way I see him."

- He had received no word from the Department of Corrections about the request.



Tracy Dockray, left, and other Tech art majors drew a mural on the sidewalk in front of the UC, above, to celebrate Tech's Homecoming this week. (Photos by Max Faulkner)

Witches not devil worshippers

Members of the Church of Wicca do not believe in "an entity called Satan," Louise Stone said Wednesday to several Tech mass communications students.

A basic belief included in the Wicca religion is reincarnation. A basic belief included in the Wicca religion is reincarnation.

The Church of Wicca recently have been in area headlines with a sect of the Church of Wicca, a sect of the Church of Wicca, had its 19th annual convention in Austin Oct. 19 and 20. That convention raised protests.

The Church of Wicca has one solid philosophy included in every sect of the religion: "And it harm none, do what thou wilt."

Although some sects of Wicca practice predicting the future, Louise Stone said she is still trying to accomplish that step. Wicca literature concerning natural prediction is more sensitive and less hampered and suppressed than those of humans.

Meditation is practiced daily by the Stones. A full moon enhances the ability to obtain a blank mind, Stone said. Stone said he usually looks at a single lit candle until it is still by letting ideas come to you, rather than having a problem in mind to solve.

The Church of Arrianus practices meditation "skyward," or nude, Louise Stone said. The Church of Arrianus practices meditation "skyward," or nude, Louise Stone said.

"We believe that wickedness does come from the mind. Hell is created by ourselves in our lifetime," Louise Stone said.

A basic belief included in the Wicca religion is reincarnation. A basic belief included in the Wicca religion is reincarnation.

The Church of Wicca has one solid philosophy included in every sect of the religion: "And it harm none, do what thou wilt."

Although some sects of Wicca practice predicting the future, Louise Stone said she is still trying to accomplish that step. Wicca literature concerning natural prediction is more sensitive and less hampered and suppressed than those of humans.

Meditation is practiced daily by the Stones. A full moon enhances the ability to obtain a blank mind, Stone said. Stone said he usually looks at a single lit candle until it is still by letting ideas come to you, rather than having a problem in mind to solve.

The Church of Arrianus practices meditation "skyward," or nude, Louise Stone said. The Church of Arrianus practices meditation "skyward," or nude, Louise Stone said.

News Briefs

Directory on sale

A directory of campus telephone numbers is available for sale at the University Book Store for \$5.

by killed. The victim was Pauline Blair, 40, who worked for the Texas Commission for the Blind. Her death was not at \$100,000.

Congress ignores Reagan's tax plan

When House Democrats voted in a 219-209 vote to reject the Reagan tax plan, they sent a clear message to the president that his plan is not the law of the land. The plan, which would cut taxes on the wealthy and increase them on the middle class, was rejected by a 219-209 vote. The plan, which would cut taxes on the wealthy and increase them on the middle class, was rejected by a 219-209 vote. The plan, which would cut taxes on the wealthy and increase them on the middle class, was rejected by a 219-209 vote.

to draft agenda'

There is much more difficult for a city to achieve professional treatment under the Reagan plan. There will be some city money to be lost by improving the economic climate in general, the city should have to meet the need for some of these own management. Some possible elements of a Reagan economic program include:

- Main transit: Reagan has said more money should be funded with local taxes.
- Home loans: Reagan has proposed tax breaks for home loans.
- Governmental restructuring: Reagan has proposed a restructuring of the federal government.
- Housing: Reagan has favored private housing over public housing.



to draft agenda'

There is much more difficult for a city to achieve professional treatment under the Reagan plan. There will be some city money to be lost by improving the economic climate in general, the city should have to meet the need for some of these own management. Some possible elements of a Reagan economic program include:

- Main transit: Reagan has said more money should be funded with local taxes.
- Home loans: Reagan has proposed tax breaks for home loans.
- Governmental restructuring: Reagan has proposed a restructuring of the federal government.
- Housing: Reagan has favored private housing over public housing.

Texas leads effort for regional primary

AUSTIN (AP) — Gov. Bill Clements said Wednesday Texas leads an effort for a regional presidential primary that would control one-fifth of the electoral votes needed to elect a U.S. president. "This will give us a position in the presidential election process that we do not have now," said Clements, who successfully guided the Reagan-Bush campaign in Texas. "The Northeast and the Eastern seaboard have an unusual effect now with their early primaries," Clements told a news conference. "This (regional primary) would assure us of the important role we deserve."

He said present plans, which are being drafted into a state law to be presented to the 1981 Texas Legislature, call for a five-state regional primary in March, and not connected with any other local or state elections.

The 1980 presidential primaries in Texas were held in connection with the local and state contests. Clements said the governors of Texas, Arkansas, Louisiana and Oklahoma — neighboring states — New Mexico, had been contacted. "With the possible exception of the governor of Arkansas, the others appear favorable to the concept. We have just started," he said.

Clements said the regional primary idea had been approved by Lt. Gov. Bill Hobby and Speaker Bill Hobby.

Clements, Texas' first GOP governor in this century, said it is possible that by 1984 there would be only six or seven regional primaries, "instead of the hodgepodge we have now."

Clements leaves Thursday night for two days of talks in California with President-elect Ronald Reagan's staff. He has a personal talk scheduled for Sunday with Reagan.

"I have no agenda. I have no information what he wants to talk to me about," Clements said.

to devil worshippers

"We believe that wickedness does come from the mind. Hell is created by ourselves in our lifetime," Louise Stone said. A basic belief included in the Wicca religion is reincarnation. Louise Stone said reincarnation is the "ability to change or create the environment by the power of the spirits or by the power of God. If you don't learn, you have to come back and do it again. The whole emphasis is on gaining knowledge."

The Church of Wicca has one solid philosophy included in every sect of the religion: "And it harm none, do what thy will."

Although some sects of Wicca practice predicting the future, Louise Stone said she is still trying to accomplish that step. Wicca literature concerning natural prediction states, "...all living things have a form of soul...all living things are equipped with receivers, more sensitive and less hampered and suppressed than those of humans."

Meditation is practiced daily by the Stones. A full moon enhances the ability to obtain a blank mind, Stone said. Stone said he usually looks at a single lit candle until it moves completely out of his sight.

"This gives incentive to clear your head of hatreds. We recommend a passive meditation by letting ideas come to you, rather than having a problem in mind to solve," he said.

The Church of Arianhu practices meditation "skyward," or nude. Louise Stone said usual meditation occurs with one person or a couple.

News Briefs

The victim was Pauline Blair, 40, who worked for the Blind. She was set at \$100,000. Townsley had operated a food-service concession in San Angelo.

Algerian envoys acting as intermediaries for the U.S. reply Wednesday to Iran's latest delivery of the 52 American hostages, who flew home after passing the note, said they are in the office of Prime Minister.

mad Ali Rajai said. "The government has received America's letter." In a telephone interview from Beirut, Ahmed Azai said the Cabinet meeting had been scheduled to discuss the reply but he did not know when it would begin.

Tehran Radio broadcasts during the day made no mention of the U.S. reply being received. There was a report the Iranian regime planned to publish the text of the note Thursday or Friday, but that was not officially confirmed.

Ticket draw for Tech-SMU ticket draw.

By The Associated Press
The Dow Jones average of 30 industrial stocks rose 22. Its largest gain since it climbed 22.

Advances

Stocks

