



JEFFERSON LAND & REALTY
40 Commerce Lane, Suite A, Rochelle, VA 22738
540-948-5050 Website: www.jefferson-land.com



***"Specializing in the Marketing of Fine Country
Properties in Central Virginia"***



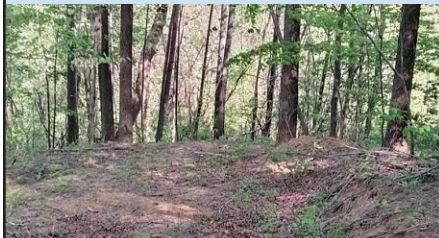
NEW TO THE MARKET



RUCKERSVILLE — GREENE CO.

Lot 4 Horizon Dr.-10.5+ acres in a gorgeous setting with year round sweeping mountain views. Mixture of hardwood and open field. Underground electric is installed. VDH conventional drainfield site. Custom home package available
\$289,900 Call Joel Owner/Agent

NEW PRICE



SYRIA—MADISON COUNTY.

Enjoy the peace and serenity from this 14.059+- wooded acre mountain retreat. Perfect recreational property with trails throughout for hiking or ATV's. New survey. Outdoor Recreational Opportunities Are Endless! Within walking distance to Dark Hollow Trailhead/Waterfalls and 10 minutes to Old Rag Mountain and White Oak Canyon trailheads offering incredible hiking trails, waterfalls & canyons to explore.
\$299,000 Call Lisa

NEW TO THE MARKET



HAYWOOD — MADIAON CO.

Exceptional opportunity to acquire 2 residences & 34.550+ acres. Adjoining 2 newly approved beautiful building sites each being approved for a 4 bedroom conventional drainfield is available to purchase. The land is 2/3 open rolling hayland with the balance in mixed hardwoods. An all weather tributary of Deep Run stream traverses the property. Long State hardsurfaced road frontage.
\$772,200 Call Bill or Gene

NEW TO THE MARKET



HAYWOOD — MADISON CO.

Beautiful 7.25+ open and wooded acre lot approved for a 4 bedroom conventional drainfield. Mountain views and creek.
\$215,000 Call Bill or Gene



Bill Gentry,
Principal Broker
540-718-4210



Lisa Dyer,
Associate Broker
540-727-4003



Gene Smith,
REALTOR®
540-219-1567



Joel Watkins,
REALTOR®, GRI
434-989-5556