

**Draft: 07/01/2022**

**Focal/ Enhancement Areas**

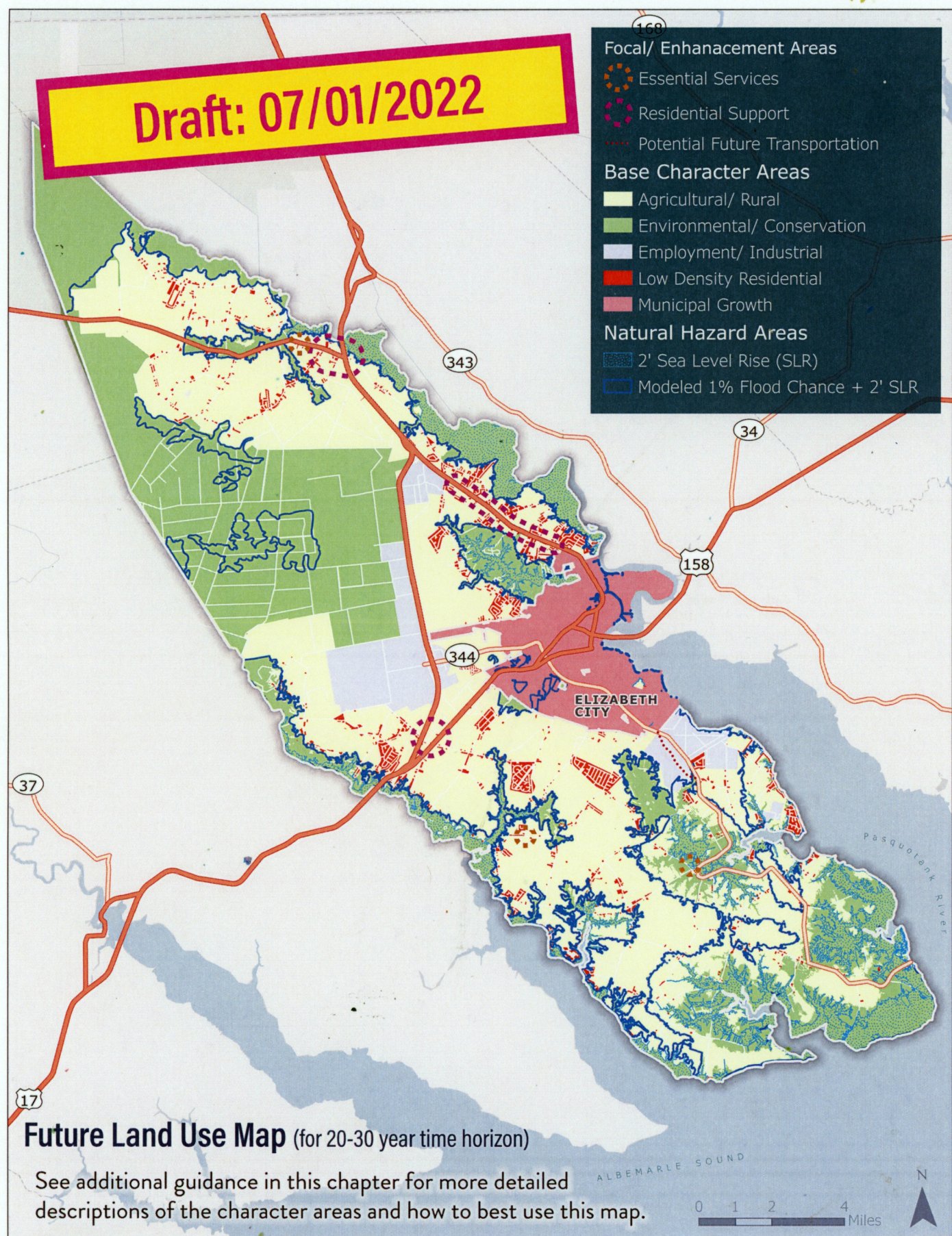
- Essential Services
- Residential Support
- Potential Future Transportation

**Base Character Areas**

- Agricultural/ Rural
- Environmental/ Conservation
- Employment/ Industrial
- Low Density Residential
- Municipal Growth

**Natural Hazard Areas**

- 2' Sea Level Rise (SLR)
- Modeled 1% Flood Chance + 2' SLR



**Future Land Use Map** (for 20-30 year time horizon)

See additional guidance in this chapter for more detailed descriptions of the character areas and how to best use this map.