

NORTH CONWAY | MOUNT WASHINGTON VALLEY | WINTER, 2020

# NORTH CONWAY

THINGS TO DO • SHOPPING • RESTAURANTS



# YOUR WINTER VACATION STARTS AT THE BASE OF **MOUNT WASHINGTON**

Just 25 minutes north  
of North Conway

GreatGlenTrails.com  
603-466-3988

*Mt. Washington*  
**SnowCoach**

Limited Availability!  
Book Online



SnowCoach Tours



Scenic Trail System



Family Fun



Best Nordic Ski Shop



**Ski-In**



**Ski-Out**



## The Glen House

Located trailside at Great Glen Trails, The Glen House hotel offers fine accommodations, an award-winning tavern, and great food at The Notch Grille. Book your stay at [TheGlenHouse.com](http://TheGlenHouse.com) or call 603-466-3420.

**Just two miles north of Wildcat Mountain Ski Area!**



# Welcome to North Conway

North Conway has been a destination for outdoor recreation enthusiasts for generations.

In winter or summer, it's a great place to get out and enjoy nature and adventure, and then relax with an evening of entertainment.

In this edition of North Conway Magazine, you'll find our guide to local downhill and cross-country ski areas, with suggestions on how to find the right fit for your abilities and interests.

We also include the best of what the Mount Washington Valley has to offer this winter.

We've got selections of trails for hiking, climbing, snowmobiling, biking and sleigh rides. In addition, we've included listings for local concerts.

Whether you're here for the week or a day, we hope this guide will help you make your visit a memorable one. As you'll see, there's plenty to do.

— Terry Leavitt and Tom Eastman



North Conway Village from Schouler Park. (JAMIE GEMMITI PHOTO)

## SEA DOG BREWING CO.

**AWARD-WINNING CRAFT BEER  
& CREATIVE PUB FARE!**

**In North Conway  
Serving lunch, dinner,  
late night & kid's menu too!  
1976 White Mountain Hwy  
North Conway, NH  
(603) 356-0590**

**Located in the Big Red Barn.  
You'll find ample parking in rear lot.**



**seadogbrewing.com**

**Happy  
Hour**  
Daily 3-6pm

**Late Night  
Menu Every  
Night**

**Monday:  
Mug Club  
Specials**

**Tuesday:  
Karaoke**  
8pm

**Wednesday:  
Trivia**  
7pm

**Friday &  
Saturday:  
Live Music**



WITH EXPANDED  
**HORIZONS**

COME ENDLESS

*possibilities.*



**NH'S ONLY 8-PASSENGER  
GONDOLA NOW OPEN!**

**2019-20 SEASON LONG DEALS**

**2-4-1 WEDNESDAYS** Two adults ski or ride for \$88 during non-holiday periods or enjoy two Nordic tickets for \$21.

**\$29 POWDER & PASTA** Ski or ride from 4pm-close and enjoy a pasta dinner Fri. & Sat. nights, Dec. 27-March 14, plus nightly during holiday periods. Or hit the slopes starting at 2pm for \$53.

**\$60 NEXT DAY UPGRADE** Upgrade your Sun.-Thurs. non-holiday ticket by 4pm and ski the next day for \$60.

**\$110 ZIP & SKI** Hit the slopes then soar above them on the Bretton Woods Canopy Tour.



*Bretton Woods*

Learn more at [brettonwoods.com/specials](https://brettonwoods.com/specials)

All specials valid through 2019-20 ski season and are subject to change without notice.  
May not be combined with other offers or promotions.

Route 302, Bretton Woods, New Hampshire  
800-258-0330 | [brettonwoods.com](https://brettonwoods.com)

OMNI  RESORTS  
mount washington  
new hampshire





ABOVE: Riders and skiers enjoy skiing on the Polecat trail at Wildcat Mountain. BELOW: A telemark skier makes fresh tracks at Cranmore. (JAMIE GEMMITI PHOTOS)

## Slopes & styles

### Finding the perfect ski area



Each of the valley's six local alpine ski areas has something unique to offer skiers and boarders, and sometimes non-skiing family members who are hoping for other options than hanging out in the base lodge with a good book. Your needs and desires may change from trip to trip depending on who's coming along and how you want to ski, and all these mountains are worth at least one visit. Whether you're looking for long smooth runs or steep glades, live apres-ski music or a nearby hot tub to help you recover, you can find something to fit.

If you are a beginner and looking for a lot of green circle trails to practice your basic skills, or have three kids going in four different directions, King Pine, Cranmore and Black Mountain are smaller mountains with plenty of beginner and intermediate trails, as well as glades and expert trails for when you are ready for a challenge.

Cranmore and King Pine both have graduated terrain parks, where skiers and boarders can start small and work their way up to big jumps, rails, boxes and other freestyle terrain, as do Attitash and Bretton Woods.

Although it's the smallest of the local mountains, King Pine, located in East Madison, offers a great variety of activities — both on and off the slopes — at an affordable price, making it a great deal for anyone who wants other options to complement a day of downhill or a vacation-week stay. There are regular kids' and family ski races, a Winter Carnival and overnight camps during vacation week.

King Pine Ski Area is part of Purity Spring resort, which includes 20K





cross-country ski and snowshoe trails, a tubing park and skating, all of which are covered by the cost of the day's ski ticket (or can be purchased separately for non-downhill skiers). The resort also has a fitness center with swimming pool, if you're looking for that hot tub.

Known for its learn-to-ski programs, Cranmore also has live music on the weekends and Cranapolooza family celebrations with s'mores, games and entertainment at the base of the mountain most Saturday and vacation week afternoons (and fireworks on select Saturdays).

If your tastes run to variety in the black diamond category, Bretton Woods places the highest percentage of trails (50 percent) on the expert list. As the largest ski area in New Hampshire, with more than 450 acres of skiable terrain, Bretton Woods also has plenty of beginner trails (23 percent).

Like King Pine, Bretton Woods maintains its own cross-country trails (and you can trade in your alpine pass for a nordic pass if you're done with the day's downhill). There are also fat-tire bike trails, tubing and sleigh rides, snowmobiling, dog sledding, an indoor climbing wall and a three-hour zipline canopy tour.

Wildcat and Attitash offer considerable expert terrain. Both are owned by Vail Resorts, and a ticket for one mountain is good at the other, with a combined acreage and variety comparable to Bretton Woods' alpine trails. If skiing among the trees is your thing, and all three now sport large acreages devoted to glade skiing, with 125 acres of glades at Bretton Woods, 80 acres at Wildcat and 60 at Attitash.



**Skiers at the start of Black Mountain's Friday Night Lights uphill racing and touring series. (COURTESY PHOTO)**

Black has also opened new glades and backcountry terrain, and in partnership with Ski the Whites, has added a backcountry skiing and snowboarding program with skiing and snowboarding lessons and rentals from its base lodge and Friday Night Lights, an uphill weekly ski touring and racing program.

Weekend slopestyle, mogul jam and skier/boarder cross competitions at Attitash make for good spectator viewing.

All of the mountains offer complementary activities, whether it be a mountain coaster (Cranmore), tubing (King Pine, Cranmore, Bretton Woods and Great Glen), races and competitions, celebrations on snow and special events. All have live music on Saturdays and vacation weeks.

## Ski Area Stats

**Attitash Mountain Resort** in Bartlett has 11 lifts serving 68 trails on more than 300 acres, with 45 percent intermediate and 28 percent each of novice or expert trails; along with 60 acres of glades and terrain parks for all ability levels. For current conditions, call (603) 374-2368.

**Black Mountain** in Jackson has a vertical drop of 1,100 feet and five lifts serving 45 trails and glades (divided evenly between novice, intermediate and expert) on about 150 acres. For current conditions, call (603) 383-4490.

**Bretton Woods** ski area, part of Omni Mount Washington Resort in Bretton Woods, has 1,500 feet of vertical drop and 10 lifts serving 62 trails (50 percent expert, 27 percent intermediate and 23 percent novice) on more than 450 acres. For current conditions, call (603) 278-3320.

**Cranmore Mountain Resort** in North Conway has a vertical drop of 1,200 feet, with nine lifts serving 56 trails and glades (44 percent intermediate and 28 percent each of expert and novice) on over 170 acres. For more info, call (603) 356-5543.

**King Pine** in Madison has a vertical drop of 350 feet, with six lifts serving 17 trails and glades (44 percent novice, 31 percent intermediate and 25 percent expert) on 48 acres. For current conditions, call (603) 367-8896.

**Wildcat Mountain** in Pinkham Notch has a vertical drop of more than 2,000 feet, with five lifts serving 48 trails (47 percent intermediate, 33 percent expert and 20 percent beginner), a terrain park, a terrain-based learning area and 80 acres of glades. For current conditions call (603) 466-3326.



# What's New?

## Gondolas, glades and uphill skiing

Ski resorts spend much of the off season maintaining and improving their equipment, trails and facilities in preparation for the coming year.

Most local resorts continue to invest in snowmaking and grooming equipment. With close to 100 percent coverage, that money is now going into upgrades to provide better coverage and greater efficiency. But the bottom line is, as long as temperatures are cold, skiers should have good snow on the slopes.

Among the highlights of this summer's work at Attitash was the widening the Cathedral trail by 20-feet, along with upgrading the snowmaking on that and other trails.

The biggest news for Attitash and Wildcat, this year, is that the two mountains are under new ownership. Announced in late September, Peak Resorts sold the areas, along with its 15 other ski areas across the country, to western ski giant Vail Resorts. The sale brings the two mountains under the same ownership as Stowe Mountain Resort and Okemo Mountain Resort in Vermont and Mount Sunapee Resort in New Hampshire, and Vail is offering

Brendan Murphy of North Conway heads back up Wildcat mountain. Backcountry and uphill skiing are becoming more popular, and most ski areas have made some accommodations for uphill skiers, though they may limit travel to specific trails or times. (JAMIE GEMMITI PHOTO)



**Big City  
Deal,  
Small Town  
Feel!**

**Sales & Leasing,  
Service, Parts  
& Accessories**

## THE PROFILE GROUP

### PROFILE SUBARU

[www.profilesubaru.com](http://www.profilesubaru.com)

603-447-3845

Rte 16, Conway, NH

Impreza, Crosstrek, WRX, Forester, BRZ,  
Outback and Ascent



### PROFILE POWERSPORTS

[www.profilepowersports.com](http://www.profilepowersports.com)

603-447-5855

Rte 16, Conway, NH

Just South of Conway Village

Snowmobiles/ATV's/Tractors/Motorcycles/  
Power Equipment







Hilary McCloy, with dog Squall, sit on the new deck at Lostbo Cabin, Black Mountain. (ANDREW DRUMMOND PHOTO)

access to all of them under an Epic Pass, with an eastern option, as well as one that includes the company's western resorts of Vail, Whistler Blackcomb, Park City and Breckenridge.

## Backcountry at Black Mountain

Black Mountain is continuing its partnership with Ski the Whites to add a strong backcountry skiing and snowboarding program with skiing and snowboarding lessons and rentals from their base lodge.

"Our partnering up with Ski the Whites this year will really make the uphill travel accessible for people wanting to get into the sport, as well as the more experienced crowd having a place to purchase new equipment and learn new techniques," said Black marketing director Liz York.

Black continues to improve the Lostbo Cabin that was built about half way up the mountain a couple of years ago. This year, a new deck has been added.

"We use this cabin all winter as a full-service pub with grilled and barbecue foods. It is also used for our Friday night uphill race series," John Fichera, general manager, said.

The race series is put on by Andrew Drummond of Ski the Whites, who also runs the backcountry shop in the base lodge.

"Andrew Drummond is pretty well renowned in the backcountry world, so the skills and expertise he brings are really an asset to the community, and we are excited to be sharing space with him," York said.

Black offers a \$99 uphill-only season pass, in addition to a \$10 uphill day pass, and extended uphill hours to sunrise-4 p.m. to let people get in some turns before work.

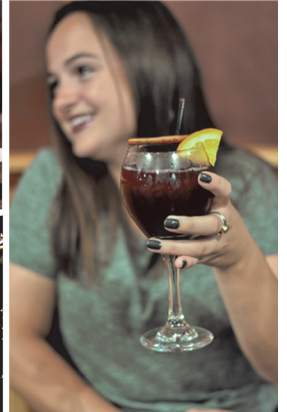
Granite Backcountry Alliance helped with trail maintenance to prune and manicure the glades.

## ENTER AS STRANGERS ♦ LEAVE AS FRIENDS

### RESTAURANT



### SPORTS BAR



### LODGING

22 BEERS ON TAP  
WINE & SPECIALTY COCKTAILS  
FAMILY & ADULT ACCOMMODATIONS  
PET FRIENDLY ROOMS

### LOUNGE

336 Route 16A Intervale, NH 03845  
Located just outside North Conway Village  
at the New England Inn  
603-356-5541  
[TuckermansRestaurant.com](http://TuckermansRestaurant.com)

**Tuckerman's**  
RESTAURANT & TAVERN





**Bretton Woods debuted its eight-passenger gondola (the first in New Hampshire) this season. The gondola travels at 1,200-feet per minute, allowing skiers to reach the top in under five minutes. (COURTESY PHOTO)**

Plus, there will be free ropetow use all winter, with new operator station/deck there and at the top of the Platter Pull.

#### Bretton Woods adds gondola

The biggest news at Bretton Woods for this season is the addition of an eight-passenger gondola, which is now in operation.

A new mountaintop restaurant is also under construction and is expected to be operational by next summer.

Bretton Woods also offers a Stay Here, Ski Free Package. Starting at \$279/double occupancy with availability Sunday-Thursday through the season at Omni Mount Washington Resort, Omni Bretton Arms Inn and The Lodge & Townhomes at Bretton Woods, the package includes accommodations and two complimentary ski lift tickets per room, per night (two tickets per night, per bedroom at The Townhomes).

#### Cranmore starts second condo

Cranmore continues with its \$50 million development project planned to transform the resort into a vibrant mixed-use community with year-round residences and expanded base facilities, breaking ground in August on Phase II of Kearsarge Brook Condominiums. The project also includes a hotel to replace the recently closed fitness center at Artist Falls Lodge.

Other new additions for this season include a new path to the rental center and improvement of

the advanced reservations system for rental equipment.

Food service is getting a new taste, too. "We are rebranding the Red Sled Burritos, on the other side of Legends, with the new Red Sled Chicken Waffle. Food options are available at the summit Meister Hut, Zip's Pub, Sliders cafe and bar, and Legends," said Marketing Director Becca Deschenes.

#### King Pine developing tree skiing

King Pine has been working in recent years to maintain and improve its existing tree skiing areas and develop more within its existing boundary area. The Madison ski area also continues to make big investments in snowmaking, enabling the resort to make more snow in fewer hours and at warmer temperatures.

This year, King Pine is replacing their rental equipment and one third of the tubing fleet. The resort is also investing in a new sonar technique of measuring snow depths.

"We invested in tech mounts on the groomers," General Manager Andrew Mahoney said. "These are sonar detectors which measure the snow depth. It is not a cheap product, but it could save for extra snowmaking."

According to Ski NH, skiers visits, which include alpine, cross-country and tubing, for the 2018-19 season reached 2.3 million or 100,000 more than last year. This represents a 5 percent increase for the 32 ski-area members of Ski NH.

*Rachael Brown contributed to this report.*

## WE ARE THE NORTHEAST



EASTERN MOUNTAIN SPORTS

## YOUR MOST TRUSTED SOURCE FOR OUTDOOR CLOTHING, GEAR & GUIDANCE

SNOWSHOE | SKI | CLIMB | CAMP  
HIKE | RUN | CYCLE | PADDLE



**VALID NOW THRU 3/31/20. IN-STORE ONLY. FOR ONE-TIME USE. ONE COUPON PER CUSTOMER. ORIGINAL COUPON MUST BE SURRENDERED AT TIME OF REDEMPTION. MAY NOT BE COMBINED WITH:** any other coupon based offers, Clearance, Prices ending in 7 or 8, '2 For' Deals, Daily Deals, Doorbusters, Flash Sales, or Power Deals.

**NOT VALID ON:** Adidas, Ahnu, Arc'teryx, Asics, Big Agnes, Birkenstock, Black Diamond, Brooks, Carhartt, Carolina, Chaco, Chippewa, Dansko, Fjallraven, Florsheim Work, Grabber, Goal Zero, Hoka One One, Hydro Flask, Inov-8, Icebreaker, Iron Age, Keen, Knapp, Kokatat, Kuhl, Leatherman, Levi's, Marmot, Medterra, Merrell, NEMO, New Balance, Oakley (online only), Obermeyer, Oboz, Olukai, O'Neill, Oofos, Osprey, Outdoor Research, Prana, Rainbow, Reebok Work, Reef, Rockport Works, Royal Robbins, Salomon, Sanuk, Scarpa, Smith, Sorel, Sperry, Spikeball, Suncloud, Superfeet, Suunto, Teva, Tepui, The North Face, Thule, Timberland Pro, Toms, Under Armour, Vionic, Yeti, GPS-enabled devices, avalanche beacons, car rack systems & accessories, cargo boxes, coolers & cooler accessories, fitness trackers/monitors, boats, bikes, SUPs, skis, binding, boots or poles, taxes, shipping and handling, purchase of gift cards, repurchase of returned merchandise, product rentals, or EMS schools. Coupon has no cash value. Employees not eligible.

1640 White Mountain Hwy  
603-356-5433



ems.com





Jackson Ski Touring Center. (JAMIE GEMMITI PHOTO)

## Nordic Ski Areas keep getting better

Mount Washington Valley's ski touring centers have been beefing up trails, snowmaking and grooming as well as tours and amenities. All offer scenic terrain, lessons, equipment and rentals.

Perhaps the greatest changes can be seen at Great Glen Trails, at the base of the Mt. Washington Auto Road, which last year opened the new Glen House Hotel and now provides trailside lodging.

The eco-friendly hotel offers 68 rooms facing mountains on both sides and includes an indoor pool, the Notch Grille restaurant and a full bar. For more information, go to [theglenhouse.com](http://theglenhouse.com).

The trails and other facilities around the base have been revamped, with upgrades to their tubing hill and drainage work at the racing facility.

This in addition to investments in recent years to increase terrain during early and low-snow seasons.

Also new last year is a ski-in, ski-out teaching center adjacent to the base lodge. The area is better protected from the elements and perfectly situated for beginner skiers.

All this work seems to have paid off as Great Glen was named one of the top 10 cross-country ski resorts in the country in a U.S. Today reader poll this year.

In addition, Great Glen is adding another SnowCoach to its fleet of winter coaches to take passengers on a ride to treeline on the Mt. Washington Auto Road.

### Whitaker Woods trails improved

Also seeing significant upgrades over the past two years is Whitaker Woods, part of the Mount Washington Valley Ski Touring system in the heart of North Conway Village.

Beginning last year, the Mount Washington Valley Ski Touring and Snowshoe Center worked on trail relocation in Whitaker Woods to get skiers off the powerline as well as rerouting the top of the Vista Trail, along with ongoing maintenance and repairs of bridges.

### Holding on to snow

Bear Notch Ski Touring, owned and operated by the Garland family, offers 70 kilometers of skiing. Laid-back and friendly, the full-service cross-country ski and snowshoe center has homemade bread and soups daily.

Over the past two years, co-owner Doug Garland says, the owners have been continuing work to make trails able to hold snow better early on in the season so they can be opened for skiing in light snow cover.

## Touring Centers

**Bear Notch Ski Touring:** 70 km — 60 km track- and skate-groomed, backcountry trails in the Yates Farm area. Additional multiple use trails shared with snowmobiles in the Bartlett Experimental Forest area. Snowshoers share trails. Dogs allowed throughout the system. Route 302, Bartlett; (603) 374-2277; [bearnotchskitouring.com](http://bearnotchskitouring.com)



**Bretton Woods Nordic Center:** 100 km — 95 km track-groomed, 90K skate-groomed, 5K backcountry, and lift-served Nordic High Country area. Snowshoers share trails; guided snowshoe expeditions, daily, 10 a.m.-noon and 1-3 p.m. Lift-served access to high-country snowshoeing near Mountain Road area. Fat biking: On the Deception and Fabyan's Fields Trail Network. Route 302, Bretton Woods; (603) 278-3322; [brettonwoods.com](http://brettonwoods.com).



**Great Glen Trails:** 45 km — 25 km skate- and track-groomed, 20K backcountry, 2K snow-making. Snowshoers share trails. Saturday tours at 1 p.m., starlit tours with a naturalist on Dec. 28, Jan. 4 and 18, Feb. 15, 16 and 22. Ski and snowshoe rentals. Fat bikes: Open to fat bikes daily, afternoons only, conditions permitting. Dogs welcome on Aqueduct Loop only, on leash. Route 16; 603-466-2333; [greatglenhills.com](http://greatglenhills.com)



**Jackson Ski Touring:** 154 km — 93 km track-groomed, 88K skate-groomed, 61K backcountry. Snowshoeing beside ski trails or on 45K of snowshoe-specific trails, guided snowshoe tours on weekends and vacation weeks. Ski and snowshoe rentals.



Dogs: 15K dog-friendly trails in Prospect Farm area on Carter Notch Road and in Jackson Village: Covered Bridge, Kissing Bridge and Gray's Inn Cut-off Trails. Main Street, Jackson (603)383-9355; [jacksonxc.org](http://jacksonxc.org)

**Mount Washington Valley Ski Touring:** 65 km — 45 km track- and skate- groomed, 20K backcountry. Snowshoers share trials. Saturday tours at the touring center at 1 p.m. for 1½ to two hours. Ski and snowshoe rentals available. Fat bikes allowed on designated bike trail and on ungroomed trails in Whitaker Woods. Dogs allowed in Whitaker Woods only. Ragged Mountain Equipment, Route 16, Intervale (603-356-9920; [mwvskitouring.org](http://mwvskitouring.org))



**Purity Springs:** 28 km — 15 km track- and skate-groomed, 13K backcountry. Snowshoe on cross-country trails and backcountry trails, tours Wednesdays 1 p.m. and Saturdays 2 p.m. Ski and snowshoe rentals available. Dogs allowed on weekdays, but not on weekends or vacation weeks. Route 153, East Madison; (603) 367-8896; [kingpine.com](http://kingpine.com).



**Trails in the Wood:** 10 km Trails in the Wood system, developed for education and recreation. Trails designed for walking, cross-country skiing, snowshoeing, mountain biking, maple sugaring and nature observation. Open from 9 a.m.-4 p.m. or whenever the gate is open. Route 16, Intervale; (603) 356-9980; [believeinbooks.org](http://believeinbooks.org).





### A cozy stop in the woods

Bretton Woods Nordic Center, part of the Omni Mount Washington Resort, recently added a warming cabin on the Porcupine Lane Trail in the Ammonoosuc Nordic Trail System.

The 12-by-16-foot log cabin has room for a dozen Nordic skiers or snowshoers in nearly 200 square feet of interior space arrayed with couches and heated by a small gas stove.

A covered porch provides views of the snow-covered Presidential Mountain Range and attendants are available to serve steaming drinks and snacks during select periods.

Great Glen and Jackson Ski Touring also feature warming huts on their trails.

Starting in the heart of picturesque Jackson Village, the 154-kilometer Jackson Ski Touring Center is the largest in the Northeast.

The center completed an expansion of nearly 4 miles of trails and eight bridges in 2016. Last year, the center was named to the U.S. Today reader poll of top cross-country ski resorts in the country.

At Purity Spring Resort Cross-Country and Snowshoe Reserve in East Madison, Marketing Director Thomas Prindle said the crew continues to make improvements to the cross-country network signage. Purity spring also offers guided snowshoe tours on Saturday afternoons at 2 p.m., as well as moonlight tours at 7 p.m. on Jan. 4, Feb. 8 and March 7.

For more information, go to [skinh.com](http://skinh.com) or the Mt. Washington Valley Chamber of Commerce at (603) 356-5701 ([mtwashingtonvalley.org](http://mtwashingtonvalley.org)).



## The Tap House

- > Live Music every Friday & Saturday for the Winter Season
- > 10-Tap Draft Tower Specializing in Hand-Crafted Beer and Wine
- > Clean & Modern, yet Rustic Ambiance

Open: Tuesday-Thursday 5pm-9pm;  
Friday & Saturday 5pm-10pm



THE TAP HOUSE \ \ INSIDE OF THE GRAND SUMMIT HOTEL @ ATTITASH \ \ 104 Grand Summit Rd, Bartlett, NH \ \ 603-374-6700





Dogs are allowed on most trails at Bear Notch Ski Touring Center in Bartlett and to a limited extent at other Nordic centers in the area. (JAMIE GEMMITI PHOTO)

## Touring Centers

### More than skiing



Once upon a time, cross-country ski centers were just about cross-country skiing. They might have grooming or not. Trails that were narrow and untracked, “groomed” by the skier in front. Then some Nordic centers began grooming trails with snowmobiles and contraptions resembling bedsprings.

Trails were single or double-tracked for two-way traffic, but no “skate lanes” existed then. With the advent of skate skiing in the 1980s, centers widened some trails and groomed them for both classic and skate skiing.

In the past decade, many cross-country centers added showshoeing as technical advances in snowshoes made them easier to put on and use. Initially, snowshoers used the same groomed trails, but then centers added “snowshoe specific” trails that made outings more fun.

Soon, dog lovers asked if they could bring Fido, too, when they went skiing and snowshoeing. Each center had to develop its “dog” policies — whether to allow them or not and where. Some centers added snow tubing to expand their offerings and attract families.



## Homer's Appliance Service and Clear Vent The Dryer Vent Cleaning Specialist

- Service all major household appliances
- Offer appliance installation
- Provide service to the Mount Washington Valley & surrounding areas.

PO Box 19, Jackson, NH 03846 • kevinpratt74@yahoo.com  
**603-383-8033**

## Tramway Artisans

70,000 Gifts!



## Tramway Marketplace

Mention this  
ad and receive  
**10%  
OFF**  
your  
purchase  
Some exclusions  
may apply

NH Souvenirs, Gifts, T-Shirts,  
Hoodies, Women's Fashion,  
NH Art & More!

Greeting Cards for Every  
Special Occasion!

**603-539-5700**

2336 Rt. 16, West Ossipee (Next to McDonald's)





A family heads out for some fat-tire biking in Whitaker Woods in North Conway village. (JAMIE GEMMITI)

The latest addition that some Nordic centers are offering is “fat biking.” Fat bikes are large frame mountain bikes with tires wider than 3 ½ inches.

The tires are run with low pressure, making for little damage to the trail and lots of fun for the year-round rider.

The Mount Washington Valley has seven Nordic centers: Bear Notch Ski Touring Center, Bretton Woods Nordic Center, Great Glen Trails Outdoor Center, Jackson Ski Touring Foundation, Purity Springs Cross-Country and Snowshoe Reserve; Mount Washington Valley Ski Touring and Snowshoe Center and Trails in the

Wood. Ski and snowshoe rentals are available at all but Trails in the Wood.

Each center is unique in its offerings. All have cross-country skiing and snowshoeing. Dogs are allowed to some extent at each, and fat bikes are continuing to make inroads. At some areas, you’ll also find snow tubing, ice skating or sleigh rides. One has a snowcoach ride halfway up Mount Washington, another has a biathlon range, and another has Nordic lift-served access high country alpine trails.

It’s not just about skiing anymore.

—Sally McMurdo



**THIS GUY’S BEEN TUNING SINCE 1994.  
SEEN IT ALL. READY FOR ANYTHING.**

**DUNCAN**

The Wax Guy at Andes

“Legend.” JEREMIAH BEACH *Facebook*

“Anyone with a moustache like that obviously knows what they’re doing.” ANONYMOUS

“His tuning experience is unrivaled in the MWV.” KRIS KEBLER

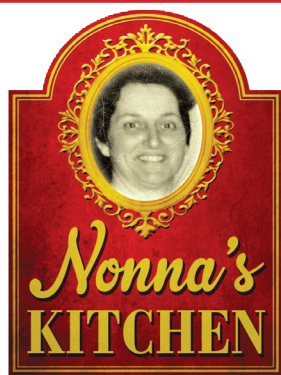


**DEMO CENTER  
SKI RENTALS  
TUNE SHOP**

AndesSki.Shop

520 US-302, BARTLETT NH | 603-374-6864

*You need to wax.*



**19 Exchange Street,  
Gorham, NH  
603-915-9203  
nonnasgorham.com**



*A Taste of Italy  
in the  
White Mountains  
Chef Owned and Operated*

*Offering authentic, made from  
scratch Italian cuisine in a  
cozy & comfortable setting.*

**Winter Hours:**

**Wed-Sat 4:00pm - 8:30pm**

**Spring-Fall:**

**Wed-Sun 4:00pm - 9:00pm**





Tyler Ray skis in the Crescent Ridge Glade in Randolph, one of several backcountry trails the Granite Backcountry Alliance has developed in the past few years. (COURTESY PHOTO)

# Making the great outdoors greater

Recreation groups, businesses work together to improve trails

*By Tom Eastman*

CONWAY — While the Mount Washington Valley has long been a mecca for skiers, hikers and more, a new collaborative approach is expanding recreational offerings to outdoor enthusiasts like never before.

“What people are looking for nowadays, particularly millennials, is a life-experience driven lifestyle that is playing in the outdoors. It combines a life and work option that makes a lot of sense to lot of people,” said Tyler Ray, a 41-year-old lawyer who has used that technical knowledge to help work out easements and agreements with landowners and the U.S. Forest Service for backcountry skiing at Intervale’s Maple Villa and South Baldface in Chatham.

“North Conway has historically always had that outdoor culture, but it has been fragmented and somewhat piecemeal over time,” said Ray, a founding member of the Granite Backcountry Alliance and owner of consulting firm, Backyard Concept.

“Whether it’s mountain biking, summer swimming or backcountry skiing,” he said, “users, government and private businesses are seeing a more coordinated effort to pool together and bring people here not just in and out but to actually bridge the gap and have people stay here and become part of the area.”

Outdoor recreation is big business nationally and in the Granite State.

Snowmobiling and ATV use are part of that outdoor use, and are integral



Volunteers clear snowshoe trails in Jackson. (SALLY MCMURDO PHOTO)





**The White Mountain Trail Collective clears trails on Mount Washington.**  
(JOE KLEMENTOVICH PHOTO)

to the economy, especially in northern parts of the state, said Taylor Caswell, state commissioner for the Department of Business and Economic Development.

Mountain biking is another sport that is really taking off in the valley. And North Conway's Cranmore Mountain Resort is not only adding three lift-serviced mountain bike trails off the South Slope next summer, it also is serving as a hub for bike trails being planned by the local New England Mountain Bike Association chapter and will be the northern terminus of the Mount Washington Valley Rec Path, the paved 2.9-mile path that will extend south to Walmart initially and then beyond.

Helping spearhead the local effort to bring outdoor-recreation groups together is the White Mountain Trail Collective, whose project list includes

reconstructing trails on Cathedral Ledge; fixing erosion on upper Kearsarge North Trail; and completing a Rec Path boardwalk connector.

Seattle-based REI, which opened a new 24,779-square-foot store in North Conway's Settlers Crossing in September, has made contributions to many local groups, including \$20,000 to the MWV Rec Path that is planned to be built over the next few years and \$7,500 to NEMBA to update trail maps for local mountain biking trails.

The store joins such other local outdoor retailers such as Eastern Mountain Sports, Ragged Mountain Equipment and International Mountain Equipment. "I think it's great that the groups are working together under the auspices of the White Mountain Trail Collective," said IME's Rick Wilcox. "There are so many activities for every season."



**A fat-tire biker gets out on the trails in Whitaker Woods in North Conway.** (JAMIE GEMMITI PHOTO)



Carol Chaffee, Associate Broker and Branch Manager with Bean Group Real Estate in Fryeburg Maine! I was the real estate office manager for over 12 years before branching into sales. Therefore understanding all avenues of customer relationships and assisting buyers and sellers.

I grew up in a family owned ski business and hospitality management with an extensive background in customer service. I believe that your success is built on "Creating Relationships For Life". I look forward to meeting new customers and to continue working together with all the familiar ones, which I take pleasure in calling friends!

At Bean Group, our goal is to be anything but ordinary. Represented by hundreds of REALTORS who are focused on meeting the needs of home buyers and sellers in Maine, New Hampshire, Massachusetts, and Vermont. Bean Group is one of the largest real estate firms in New England. Since Michael Bean introduced the company in 2003, Bean Group's management team, support staff, and agents have aligned around one simple idea – Bringing People Home!

\*\*\*\*\* 10/07/2019 - samcrowley7 \*\*\*\*\*

#### **Bought a home in 2019 in Bridgton, ME**

**Carol was very professional. She was always available/responsive for any questions that we had and always had a great attitude! She was recommended by a family member and she did not disappoint!**

\*\*\*\*\* 10/05/2019 - MULTIVEST5 \*\*\*\*\*

#### **Bought a Single Family home in 2019 in Lovell, ME**

**Carol is a true professional with tremendous knowledge, experience, and a genuine, caring personality. She's driven toward your satisfaction by finding and getting you into the home/property that is most suitable for your specific taste, desires, and situation.**



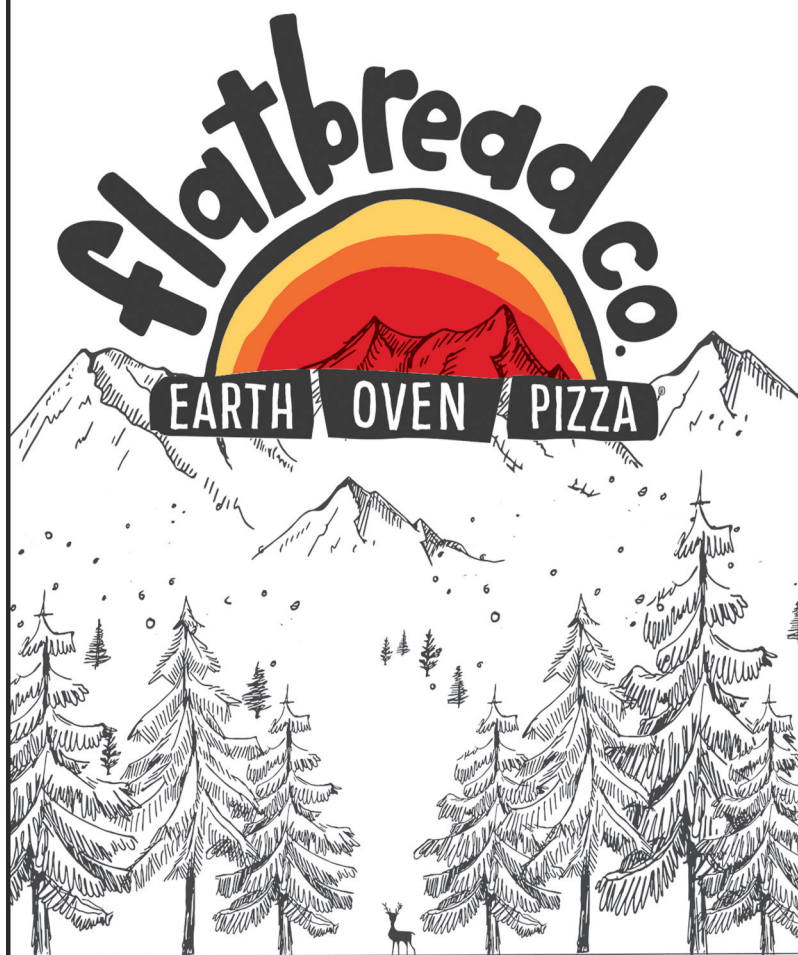
**Carol Chaffee, REALTOR®**

**www.carolchaffee.com**

**(207) 240-1641 • Fryeburg, ME**







## WARM UP FIRE SIDE

CLAY • WOOD • FIRE • LOVE • ASH • STOKE • CARE  
FRIENDS • THIRST • MOUNTAINS • FLAVOR • SMOKE  
ORGANIC SALAD • MAPLE • FLAVOR • FAMILY • LOCAL  
PASSION • NORTH CONWAY • WOOD-FIRED LOVE

THE VERY BEST PIZZA WE CAN IMAGINE

TAKEOUT AND CALL AHEAD SEATING  
603.356.4470

FLATBREAD COMPANY  
INSIDE THE EASTERN SLOPE INN,  
2760 WHITE MOUNTAIN HIGHWAY  
NORTH CONWAY, NH 03860

Ragged Mountain sells locally made outdoor clothing and equipment, and is located on the trails of the non-profit MWV Ski Touring and Snowshoe Association.

The valley also is home to the Mountain Meadow Riders snowmobile club, and fishing and hunting also are part of the picture, represented by such groups as the Carroll County Fish and Game Club in Madison and Saco Valley Anglers, a chapter of the national Trout Unlimited.

Groups like these, along with Conway-based Ski NH, the U.S. Forest Service and Appalachian Mountain Club, agree that one key to increasing and enhancing outdoor recreation is to disperse use to less-concentrated areas, no matter what the sport: mountain biking, backcountry skiing, hiking or swimming.

"The trail work here is a huge part of the history and the culture (of the area), and it is nice to see everyone come together and look at things a different way and to work together makes sense," said White Mountain National Forest's Saco District as trails manager, Cristin Bailey.

Formed in 2017, the non-profit Trail Collective's goal is to "Protect the Trails. Preserve the Legacy." Comprised of user groups such as the AMC, the Randolph

Mountain Club and the White Mountain National Forest, the organization is supported by private donors, with REI giving funds to the Northern Forest Foundation which in turn supported the Crawford Path restoration.

According to Chris Meier of the MWV Rec Path, "We always had the infrastructure with our various outdoor amenities. But now we are working together, trying to build the culture as it relates to this." He said the rec path will be like a "spine" that will lead to other attractions. Young families can use the paved path. Hikers can access trails. Mountain bikers can venture off it to new trails being built or improved. Cranmore will have its three new beginner and intermediate mountain biking trails.

Meanwhile, areas like Attitash and Bretton Woods will continue to offer lift-serviced biking as well.

In winter, there is fat biking, ski touring and snowmobiling to go along with alpine skiing. It all adds up to a lively mix of year-round outdoor activities.

"All these user groups co-exist in town — we have a vibrant energy, and it's great to have opportunities to celebrate that," said Ray. "It's a really exciting time to be in the valley."

## Good Things Come in Small Packages

See The Winnebago Vita & The Micro Minnie Trailer



### Winnebago Vita

Combining Winnebago's legendary build quality with best-in-class features, a spacious interior and plenty of useful storage: the result is a compact and easy-driving package that's perfect for solo travelers, couples or families.



### Micro Minnie Trailer

The compact camper without compromise, Micro Minnie is big on features and ready for wayfaring. At seven feet wide and with multiple open floorplans to choose from, experience the camper life the way you want.

**HILL'S RV'S**  
738 Eastman Rd (Rte 302)  
North Conway, NH



**Financing Available For Qualified Buyers!**  
Open year round, 6 days a week, closed Sunday  
1-888-HILLSRVS 603-356-4111  
www.hillsrvs.com

Visit Hill's RVs, Mt. Washington Valley's Locally Owned, Award Winning RV Dealer.



# Generations OF AWESOME™

**N**estled within the towering White Mountains of New Hampshire, a splendid array of terrain, attractions, and après awaits you. Generations of adventurous souls have carved their stories upon this special mountain. A fresh canvas of corduroy and powder lays before you, waiting for your story to be written in the snow.



→ [ATTITASH.COM](https://attitash.com)



# Backcountry

## A growing sport

CONWAY — The popularity of backcountry skiing has surged in recent years, and more and more people are searching the White Mountains for untracked powder each winter.

The Granite Backcountry Alliance, a local non-profit was formed in 2016 to promote the sport across in New Hampshire and Western Maine.

The group has been focusing on rehabilitation of old Civilian Conservation Corps ski trails and the creation of new backcountry skiing areas as well as supporting human-powered recreation and conservation efforts, winter education and avalanche/safety programs and to raising awareness of winter management issues.

GBA volunteers have worked on the John Sherburne Ski Trail and Gulf of Slides Ski Trail on Mount Washington, the Doublehead Ski Trail in Jackson and the Maple Villa Ski Glade in Intervale, among other trails.

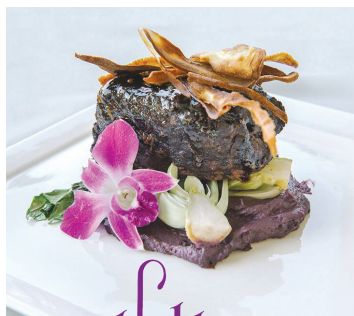
Upcoming events include the M.W. Otto Rhode Memorial Backcountry Ski Race on Jan. 25 at the Mt. Washington Auto Road.

The group will hold its second annual Mount Washington Backcountry Ski Festival for March 13-15. The event includes full-day courses with experienced guides leading skiers in sessions geared for different interests and skill levels. Participants can also ski on their own and demo the latest gear. For more information, go to [granitebc.org](http://granitebc.org).



Tyler Ray, who heads the Granite Backcountry Alliance, skis the trees in the White Mountain National Forest (ANDREW DRUMMOND PHOTO)

## Relax & Enjoy at the Top of Scenic Jackson Village at the Historic Eagle Mountain House



*Highfields*

Dinner Served in Highfields Restaurant & Eagle Landing Tavern

**Banquet and Event Space for 10 – 200 people**

**Cross Country and Downhill Skiing  
access within minutes**



96 Comfortable Guest Rooms

**Voted 1st Place Best  
Venue for a Wedding**



179 CARTER NOTCH ROAD, JACKSON VILLAGE, NH 03846 • 603-383-9111 • [EAGLEMT.COM](http://EAGLEMT.COM)



## New glades

The Granite Backcountry Alliance has created several backcountry gladed skiing areas for those who want to earn their turns. Here are a few:

**Maple Villa Glade.** Just beyond North Conway Village, Maple Villa Glade in the White Mountain National Forest on Bartlett Mountain features a variety of terrain for all abilities. Constructed in 1933 by the Civilian Conservation Corps and revived in 2018 by the Granite Backcountry Alliance, the glade blends a mix of expert to intermediate terrain including a meandering skin track to the upper elevations. Seven glade lines. Highlights: Spectacular views of Mount Washington from No. 3 glade. Plan a full day touring. Parking: 70 East Branch Road, Intervale. Overflow parking at 15 Town Hall Rd (1/2 mile) at White Mountain Stove Shop (Formerly Hartmann's Railroad). Vertical drop: 1,700 feet.

**Baldface.** Baldface is located in the northeast corner of the White Mountain National Forest in Chatham. Intrepid backcountry skiers have long been drawn to explore the open ledge alpine terrain of North Baldface, South Baldface, and Baldface Knob. The open slab on Baldface Knob now connects to new ridgeline glades. The glade zone begins at treeline at the bottom of Baldface Knob, at about 2,500 feet. The glades begin steeply in upper elevations and transition to mellow cruisers midway and toward the bottom. The Slippery Brook Trail (maintained by Chatham Trails Association) serves as the uphill skin track. Highlights: Many above-treeline faces that can make for great wilderness skiing from the top of the summits for those who want to ski in alpine terrain. Vertical drop: 2,500 feet. Parking: Baldface Circle Trail (Route 113 in Chatham).

**Crescent Ridge Glade.** Situated in the 10,000 acre Randolph Community Forest, the Crescent Ridge Glade is designed to appeal to all abilities providing a little something for everyone, including stunning views of the northern Presidential Range. Expect a moderate ski with challenging features. Five glade lines in the upper pitch of the zone vary in design but generally contain a mellow slope angle then quickly dropping in the range of 30-35 degrees for approximately 200-300 vertical feet. Each glade line deposits the skier into a large open hardwood glade. The middle section is about 20-25 degrees and extends an additional 300 vertical feet with a variety of features. The lower section contains a tree-less wildlife area at 10-15 degrees with views of the northern Presidentials. Vertical drop: 600 feet. Parking: Randolph Hill Road (lot at the end of the road).

Maps and more information are available at [granitebc.org](http://granitebc.org).



New Hampshire's original backcountry ski destination, Tuckerman Ravine on Mount Washington, still attracts thousands of skiers every spring. (JAMIE GEMMITI PHOTO)



Skiers climb the bowl in Tuckerman Ravine on Mount Washington. (JAMIE GEMMITI PHOTOS)

# Skiing Mount Washington

In addition to Tuckerman Ravine, which is accessed most easily from Pinkham Notch, some skiers hike up the mountain from the Cog Railway base station on the other side of the mountain in Crawford Notch.

The Mt. Washington Cog Railway will keep the Marshfield Base Station open for food and hot and cold drinks, from 7 a.m.-3 p.m. every day this winter.

The Cog does charge a winter land use permit fee of \$10 a day or \$100 a season will be collected instead of a vehicle parking fee.

The Cog Railway owns 39 acres of land plus its 99-foot-wide corridor from base to peak and plows the Base Road from the Four Corners intersection to the parking lots.

Cog president Wayne Presby of Littleton says the land use fee will be used to preserve, promote, maintain, improve and protect the property to facilitate its use for recreational purposes and keep the Marshfield Station facilities and parking open during the winter and summer seasons.



A backcountry skier at the Cog Railway base station. (COURTESY PHOTO)





Fat bike riders take to the trails on the Marshall Conservation Area in Conway. (TERRY LEAVITT PHOTO)

## Rolling through winter

While many local outdoor recreation enthusiasts trade in bikes for skis at this time of year, a growing number of people, aided by the latest evolution of the bicycle — fat-tire bikes — are opting to keep two wheels on the trails all winter long.

Many bikers seek out mountain bike trails like those

in the trail system being developed by biking clubs on in the Marshall Conservation Area off West Side Road in Conway. There are now several miles of trails there, and club volunteers are working to groom some of them for winter biking.

Three local ski touring centers, Mount Washington

Valley Ski Touring, Great Glen and Bretton Woods have added fat biking on limited trails. Nordic ski areas require trail passes for fat biking and offer rentals so you can try out the sport.

Shops offering sales of fat bikes include the Bike Shop (603-356-6089) and Stan & Dan's Sports (603-356-6997).

# NORTH COUNTRY

# FIREWORKS

Route 16 Tamworth, NH

(603) 323-8815

Check with your local fire department if permissible fireworks are allowed in your area.



OPEN DAILY  
at 11:30am  
Closed Tuesday



PUB MENU  
Available Late on  
Weekends

**Early Bird  
Specials**  
11:30am-5:00pm  
**Soups & Salads**  
**Sandwiches**  
**Fresh Taunton Bay  
Oysters**  
**Just for Kids**  
**Dinner for Land  
Lovers**

**Lobsters**  
*Try our Lobsters  
the Traditional  
New England Way,  
boiled in our seasoned  
water or baked stuffed  
with our homemade  
crabmeat stuffing.*

**Italian Seafood  
Specialties**  
**Broiled Seafood  
Dinners**  
**Surf and Turf**  
**Fried Seafood  
Dinners**  
**Fresh Maine Oysters  
on the Half Shell**  
**\$1.50 each**

Boiled or  
Baked-Stuffed  
from 1 pound to  
3 pounds

**Gift  
Certificates  
Available!**



Turn West at the Eastern Slope Inn, follow our signs for 1.5 miles  
West Side Road by Echo Lake, North Conway  
603-356-5578 • thelobstertraprestaurant.com for prices and complete menu



**Peach's  
Restaurant**

## The Hype Is Real!

I've heard about "Peach's" for almost a year (how long we've been in the Conway NH area), and there is always a ton of cars parked out front, usually a line out the door. When we decided to go for ourselves we were not disappointed. The food is extraordinary and the service is spectacular. The specials are unique and well designed to meet a variety of tastes and palates. My wife had the french toast and I had a burrito and it was one of the best and freshest breakfast we've ever shared. The hype is real here!

**Date of visit: October 2019**

— Brad M.



**Homemade Muffins.  
Desserts. Soups.  
Daily Specials.**

North Conway Village • 356-5860  
Open Monday-Friday 8am-2:30pm,  
Saturday & Sunday 7am-2:30pm. Closed Tuesday

# hamarena



**The Coolest Place in the Valley!**

**Public Skating • Stick & Puck • Private Rentals**  
**Birthday Party Packages • Learn to Curl**  
**Adult & Youth Hockey Tournaments**  
**Adult Men's, Women's & Coed Leagues**  
**Youth Hockey Program, Camps & Clinics**  
**Skating Club • Pro Shop • Cafe & More!!**

**No Ice May, June & July But We're Still Open**  
**Building Rentals • Street Hockey • Box Lax**  
**Jump Rope Competition • Boxing & More!!**



FOR INFO & MOST UP-TO-DATE SCHEDULE GO TO  
**HAMARENA.COM** or **CALL 603.447.5886**  
87 West Main St., Conway NH 03818

## Betty Schneider's Scandinavian Baking

**Creatively Baking with Love & Butter Since 2007!**

**We Are  
Open All  
Year!!**



**Stop by, and enjoy homemade  
freshly baked goods!**

**Coffee & Tea are always on the house!**

**• Cardamon Raisin Bread • Muffins**  
**• Almond Cake • Cookies & More!**

Open Tuesday through Saturday 7am-4pm;  
Closed Sunday & Monday

**603-323-2021 or 603-662-6047**

**kbschneidernh@roadrunner.com**  
**www.scandinavianbakingnh.com**

**Route 113 East, Deer Hill Road, Chocorua**







A windy day atop Mount Washington seen from Intervale on a day in February when winds gusted to almost 70 mph and temperatures dipped to -63 F. (JAMIE GEMMITI PHOTO)

## The Rockpile

The highest mountain in the Northeast, Mount Washington is an iconic peak that lends its name to the valley below. It can be seen from North Conway Village and many points in the area rising above neighboring mountains in the Presidential Range. Legends and stories date back to the first settlers, if not earlier, and the mountain has beckoned tourists, adventurers and scientists to its heights since the 1800s. Thousands hike it every year, mostly in summer, although many experienced climbers make the trek in winter (guided trips are available), and ice climbers find world-class climbing in the ravines. Skiers also flock to its slopes, particularly for spring skiing in Tuckerman Ravine and on the Sherburne Trail. The mountain's unpredictable extreme cold and high winds can be a deadly for unprepared hikers. Winds exceeding hurricane force occur an average of 110 days per year.



Hikers at the Tip Top House on the summit of The Rockpile. (JAMIE GEMMITI PHOTO)



Want to experience the world's worst weather without climbing Mount Washington in winter? Stop by the the Weather Discovery Center in North Conway and step inside the replica of the Mount Washington Observatory's building where the 231 mph world record wind was recorded in 1934. See how the pioneer observers lived, and with the press of a button, hear the wind howl and feel the building shake. (2779 White Mountain Highway, North Conway, 356-2137)

## Quick Facts

**Also known as:** The Rockpile, Home of the World's Worst Weather, Agiocochook (a Native American name).

**Height:** 6,288 feet, highest peak in the Northeast.

**World record wind:** Highest wind, 231 mph, recorded April 12, 1934 (stood until 1996).

**History:** First recorded summit: Darby Field, 1642.

**Science:** Mount Washington Observatory maintains a year-round weather station on the summit and conducts weather and climate research as well as scientific research under extreme conditions.

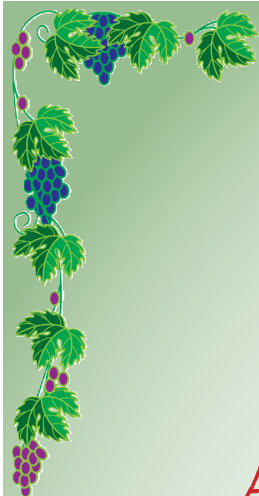
**Current weather:** Mount Washington Observatory provides daily weather forecast for Mount Washington and the higher summit at [mount-washington.org](http://mount-washington.org) or at [tinyurl.com/highersummitsforecast](http://tinyurl.com/highersummitsforecast).

**Danger:** More than 150 people have died on the mountain since 1849, many due to the extreme weather, falls and avalanches.

**Best views:** Up close on the summit, on a drive through Pinkham or Crawford Notch, from the Scenic Vista on Route 16 in Intervale and from the summit of Wildcat.

**Find it in Books:** "Not Without Peril," by Nicholas Howe, gives an eminently readable account of hiking misadventures on the mountain over the past 150 years. "White Mountain," by Dan Szczesny explores the the history and mystique of New England's tallest mountain.





## A Sampling Of Our Delicious Menu...

### Appetizers

#### Grande Arancini Ala Vodka

An herbed risotto ball stuffed with tangy marinara, sweet Italian sausage & peas

#### Toasted Ravioli

Eight cheese filled ravioli, lightly breaded, fried and topped with marinara & melted mozzarella.

#### Fried Calamari

Lightly battered and fried, topped with banana peppers. Served with our homemade marinara sauce.

#### Bruschetta Pomodoro

Grilled Italian bread, tomato, kalamata olives, garden herbs, prosciutto di parma, pecorino.

#### Antipasto Classico

Capicola, prosciutto, grana padano, sopressata, marinated kalamata olives, sharp provolone, artichoke heart, tomato, fresh mozzarella and basil, stuffed cherry peppers.

### Children's Menu

Ravioli with Meatballs • Chicken Fingers • Fettuccini Alfredo

### Homemade Gelato, Spumoni Fresh Fruit Sorbetto

Tiramisu • Cannoli • Biscotti  
and other Homemade Italian  
Pastries and Desserts!

**We use all natural chicken, pork, grass fed beef, wild caught fresh fish,  
Homemade Pasta Features and local produce when available.**

*Chef owned & operated by Vito Marcello ~ "Buon Appetito"*

45 Seavey St., North Conway Village • 356-7000 • [www.VitoFoods.com](http://www.VitoFoods.com)

Dinner from 4:30pm • Closed Tuesdays (Closed Monday Seasonally)

### Entrées

*Entrees served with our famous House Salad  
and fresh baked bread.*

#### Fettuccine with Prosciutto, Spinach & Mushrooms

in a cream sauce, served with house salad

#### Penne, Broccoli & Chicken

Chicken tenders sautéed with broccoli cream sauce,  
served with house salad

#### Spaghetti Carbonara

Caramelized onions, peas, pancetta, fresh egg,  
romano in a cream sauce, served with house salad

#### Chicken Parmigiana

Lightly breaded topped with mozzarella and marinara  
sauce, served with house salad & pasta

#### Veal Parmigiana

Tender Provimi veal breaded & topped with  
mozzarella & marinara sauce, served with house  
salad & pasta

#### Eggplant Parmigiana

Oven-baked then topped with marinara & cheese,  
served with house salad & pasta

#### Frutti Di Mare

Fettuccini topped with sautéed mussels, shrimp,  
scallops, chopped clams and calamari with white  
wine, oil, garlic sauce, served with house salad

#### Lasagna Ala Vodka

Layers of lasagna noodles with herbed ricotta, sweet  
ground Italian sausage, romano cheese, and a layer  
of hard boiled eggs topped with vodka cream sauce.

### Cocktails

Italian Margarita - Tequila, Triple-Sec, Amaretto,  
Scratch Sour, Sugar Rim

Cranberry Martini - Captain Morgans Rum,  
Triple-Sec, Fresh Cranberry & Lime Juice

Espresso Martini - Chocolate Drizzled Martini  
Glass, Vodka, Baileys, Grand Marnier & Espresso.  
Perfecto!

Vito's Frozen Mudslide - Vodka, Kahlua,  
Baileys, Vanilla Gelato Espresso Chocolate Martini should  
say, Espresso Martini

Vito's Chocolate Martini - Stoli Vanilla Vodka,  
Blend of Godiva Chocolate Liqueurs, Creme de Cocoa,  
Splash of Bailey's

Valley's Best Mai Tai - Light Rum, Dark Rum,  
Curacao, Fresh Lemon juice, Pineapple juice, Orange juice,  
with Fresh Fruit Garnish

Maple Old Fashioned - Knob Creek Smoked  
Maple Bourbon, Bitters, Cherry Garnish.

Smoked Blackberry - Casamigos Reposado  
Tequila, Casamigos Mezcal Tequila, Blackberry Liqueur,  
Fresh Lime juice, Bitters

**Serving Wines from Italy including Super  
Tuscan Wines from the Vineyards of IL Borro**

### Gourmet Pasta Sauces

Three generations have been creating our family's  
classic and healthy Italian pasta sauces. My  
gourmet pasta sauce begins with using only the  
finest of healthy ingredients such as imported  
San Marzano tomatoes and first cold pressed  
Italian Extra Virgin Olive Oil, just as my father and  
grandfather used before me.

I am so proud of these traditions and proud to  
share my love for authentic Italian food by offering  
my gourmet pasta sauces  
and salad dressings for  
you to take home and enjoy!

- Tomato Basil  
Marinara
- Fra Diavolo Sauce
- Roasted Garlic &  
Eggplant
- Sunday Sauce
- Puttanesca
- Vodka Sauce



*Vito Marcello*

**For Special Dietary Needs Gluten Free Menu – GF Pasta imported from Italy**



# The world at treeline

PINKHAM NOTCH — Guided winter tours aboard the Mount Washington SnowCoaches are about 1.5-hours long and depart daily from December through March from the Great Glen Trails base lodge at the base of Mount Washington on a first-come, first-served basis. Advance reservations may be made for the 9 a.m. trip only.

The SnowCoaches climb to about 4,200 feet, otherwise known as treeline, at about two-thirds the way to the 6,288-foot summit of Mount Washington. Riders have a little time outside at the high point of the trip before riding back down or snowshoeing down if they choose.

Sunrise SnowCoach tours are set for Jan. 20, 6:15-8:15 a.m., and Feb. 17, 20 and 24, 5:45-7:45 a.m.

More information can be found at [snowcoachnh.com](http://snowcoachnh.com) or by calling (603) 466-3988.



SnowCoach on the Mount Washington Auto Road. (COURTESY PHOTO)



First Quality Barrels for AR, AK,  
10-22 Rifles and more.  
Limited Runs and Fully Functional  
"Blemished Barrels".

GMRB is a Gold Level  
Cases Knife Dealer



Come visit our Factory Store at  
153 West Main St, Conway, NH

603-447-1095 • Mon-Fri 8am-5pm

Whether for Breakfast,  
Lunch or Dinner stop  
into The Met for  
Good Food,  
Great Coffee &  
a memorable time  
with family and friends.



the  
**Met**®  
Coffee House &  
Fine Art Gallery

2680 White Mountain Hwy,  
North Conway Village • 603-356-2332

Come visit us in our 2nd location:  
The Met at Settlers Green  
2 Common Court - Bld H-50  
North Conway • 603-307-1169



# Ice Fest 2020

Climber Erik Eisele in Tuckerman Ravine. (JOE KLEMENTOVICH PHOTO)

## Ice climbing clinics, demos, slide shows

The 28 annual Mount Washington Valley Ice Fest returns Jan. 31-Feb. 2, with a weekend of climbing, classes, clinics and presentations that attracts climbers from around the world. They come to test equipment, watch slide shows and celebrate the sport and the people in it.

North Conway is one of North America's top ice-climbing destinations. Not only does it have a range of routes, from the hard climbs on Cathedral Ledge

to the many flows in Crawford Notch State Park to the gullies of Huntington Ravine high on Mount Washington, but many are easily accessible without a long hike, making the area ideal for Ice Fest.

Clinics include Ice Climbing 101, Learn to Lead, steep waterfall ice climbing skills, crevasse rescue techniques, veterans climbing clinics and a one-day ascent of Mount Washington. To learn more, go to [mwv-icefest.com](http://mwv-icefest.com).



An Ice Fest participant attempts a climb during a clinic in 2016. (COURTESY PHOTO)



# Nail Envy

Walk Ins & Appointments

603-356-4460

[www.nailenvyspanh.com](http://www.nailenvyspanh.com)

North Conway Village

next to TD bank



Hours: Mon-Sat 9:30am-7:30pm | Sunday 10am-5pm

# 華廚 CHINA CHEF

FULL LIQUOR



OVER 100 SEATS

For Orders To Go, Please Call

603-356-3788 or 603-356-7327

[www.chinachefnh.com](http://www.chinachefnh.com)

2025 White Mtn Hwy, Rt. 16, No. Conway, NH 03860  
(Across From The Christmas Loft)

OPEN HOURS:

Sun. to Thurs.: 11:30am to 9pm • Fri. & Sat.: 11:30am to 10pm  
Closed Monday during off-season







Hiking with a group or with a guide is a great way to find out about new trails and learn the ins and outs of winter hiking. (ED PARSONS PHOTO)

# Winter hiking

By Ed Parsons

For the uninitiated, winter hiking may seem like entering a cold, cold world. But the benefits of camaraderie, healthy exercise and beautiful vistas offer great rewards for those who learn its secrets. It's also a good way to experience fabulous outdoor adventures at a minimal cost.

The best way to get started is to learn from experienced people. These can be found in many ways. On the internet, check out Northeast hiking websites like "Views From the Top" and "Rocks On Top." Here you can find veteran hikers' answers to questions from beginners as well as announcements about group hikes.

The Appalachian Mountain Club offers guided and group winter hikes to its members. You can sign up online at [outdoors.org](http://outdoors.org). Local outfitters also offer guided hikes and climbs.

If you drive to a place like the AMC's Pinkham Notch Visitor Center, north of North Conway on Route 16, you can ask at the hiker's information desk about hiking suggestions and trail conditions, and rent snowshoes there if needed. Reach the center at (603) 466-2721.

However you go, pack the essentials, pay attention to safety guidelines, trail conditions and weather reports. Snowshoes may be needed.

Good preparation can make all the difference between a fun experience and a dangerous misadventure. Find out how to be prepared at [hikesafe.com](http://hikesafe.com), and consider buying a N.H. Hike Safe card at [wildlife.state.nh.us](http://wildlife.state.nh.us). It supports N.H. Fish & Game rescues, and people who have the cards are not liable to repay rescue costs if they need to be rescued.

## Beginner Trails

### Pinkham Notch

**Lost Pond:** This pond, called a "glacial tarn," is reached by a one-mile trail directly across Route 16 from Pinkham Notch Visitor Center. A "must do" for beginners.



### Liebeskind's Loop, Crew-Cut Trail and

**George's Gorge Trail:** A short, fun network of trails, easily reached from Pinkham Notch Camp, by starting out on the Tuckerman Ravine Trail and then turning right on the trail known as the Old Jackson Road. Visit Brad's Bluff and Lila's Ledge, where great views of the notch can be found.



### Crawford Notch

**Around-the-Lake Trail:** The 1.2-mile loop hike that starts next the Highland Center and winds down to the shore of a small secluded pond called Ammonoosuc Lake and continues around it. Across the lake, a 0.3-mile spur path called the Red Bench Trail continues to a comfortable red bench, with a good view of the Presidentials.



**Mount Willard:** The 1.6-mile Mount Willard Trail is another must for aspiring hikers. The trail is likely well packed, and the summit gives a classic view of the U-shaped Crawford Notch. The trail begins behind the Depot, just south of the AMC Highland Center. It begins as the Avalon Trail and in 30 feet turns left on the Mount Willard Trail.



### Mount Washington Valley

**Boulder Loop Trail:** Pick up a brochure at the Saco Ranger Station about this self-guided nature trail. There is a gradual climb with some steep pitches. Offers spectacular views of Mount Chocorua and the Swift River. 2.8 miles. The trail begins near the Covered Bridge Campground on the Kancamagus Highway, east of Conway.



**Cathedral Ledge:** The 1.4-mile auto road to the top of Cathedral Ledge is unplowed in the winter, and is a nice climb to a classic view of the Mount Washington Valley.



To get there, turn left on River Road at the lights at the north end of North Conway. In 1.5 miles, bear left on Cathedral Ledge Road and continue in. The road bears right and the plowed section ends. Walk past the gate and continue up the road. At the top turnaround, bear left through the woods toward the cliff edge, but stay well away from it, as there may be ice under the snow. There is a section with fencing if you want to get close. Be sure to go to the southern end of the summit for more views and safe terrain. The view of the valley is great.



No Card  
Required

# TheGlassCook's +

CBD • Edibles • Medical Cannabis • Vape Pens • Custom Glass

295 Bridgton Rd  
Rte 302  
Fryeburg, Maine

207-890-8871

Open 11am - 7pm  
(closed Weds. & Sun.)

[www.TheGlassCook.com](http://www.TheGlassCook.com)

## Will CBD Get Me High?

- No. THC is the psychoactive cannabinoid that makes you high.
- CBD does not have any psychoactive properties.
- CBD hemp oil is extracted from the stalks and seeds, which contain less than 0.3 percent THC, or 50 times less than then an average euphoric-causing cannabis strain.



## BODY

Cancers



Fibromyalgia



Menstrual



Nausea



Arthritis



Diabetes



HIV / AIDS



Chronic Pain



## Modern Day Wellness

## MIND



ADHD



Depression



Anxiety



OCD



PTSD



Autism



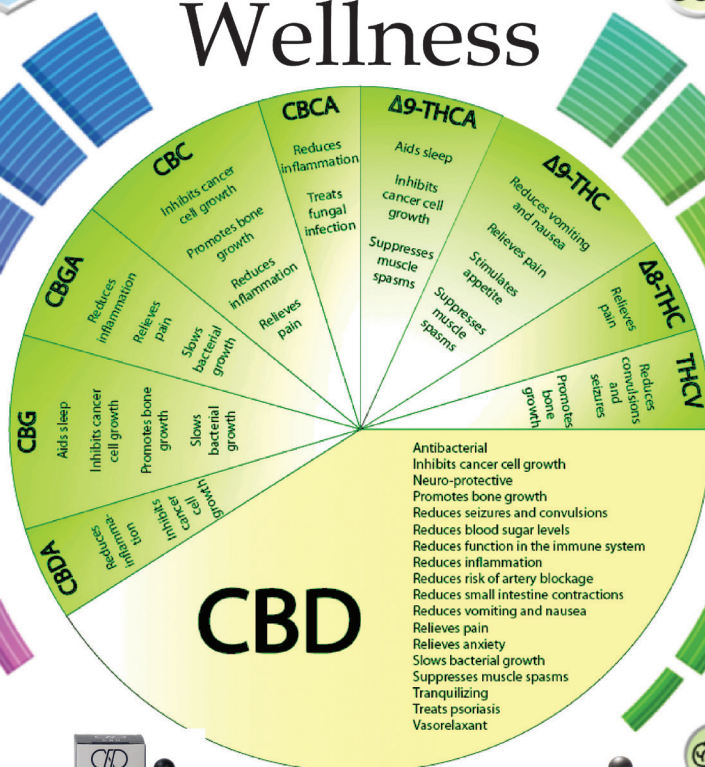
Epilepsy



Alzheimer's



Brain Damage



WE ACCEPT OUT OF STATE MEDICAL CARDS





LIFT AND TIGHTEN  
SKIN NATURALLY

FOCUSED  
ULTRASOUND.  
NO SURGERY



603-356-7070  
2977 White Mountain  
Highway  
North Conway, NH

www.  
advancedskincarenh  
.com



Freeze Your  
Fat Away.

One session.  
One hour.  
No surgery.  
No downtime.  
FDA Approved.

# Sleigh rides

Several local stables offer the classic experience of riding fields and wooded trails in a horse-driven sleigh or wagon. Some also offer horseback rides.

Farm by the River B & B with Stables  
North Conway • (603) 356-2694 for inn • (603) 356-6640 for stables •  
farmbytheriver.com

This is an award winning, owner-operated stables and bed and breakfast inn. The horses are selected for soundness and good temperament and are cared for and trained by experienced wranglers all year round.

Nestlenook Farm  
Jackson • (603) 383-7101  
Nestlenook Farm Wagon in Jackson has sleighs equipped with runners and wheels, depending on the terrain.

The Stables at Bretton Woods  
(603) 278-8989 • www.omnihotels.com  
Just a few steps from the Omni Mount Washington Resort and Bretton Arms Inn, the Stables at Bretton Woods offer equestrian activities for all levels. Daily group and individual rides,



interactive programs, carriage rides. Reservations are encouraged.

Purity Spring Resort  
Madison • (800) 373-3754 • kingpine.com

Purity Spring Resort offers horse-drawn sleigh rides, 15 to 20 minutes long, between 11 a.m. and 1 p.m. Saturdays, Dec. 29-Feb. 23, as well as Sunday, Jan. 20; Tuesday, Feb. 19 and Thursday, Feb. 21. Reservations are recommended. Warm yourself by an outdoor fire before and after your ride.

## TOTAL CONCEPT

Property  
Management

Real Estate

### Real Estate in New Hampshire's Lakes Region and White Mountains



#### Specializing in Residential, Commercial, Land, Vacation Rentals Sales & Leasing

Total Concept offers full service real estate sales, property rentals, and other related services. This array of services provides a level of care not found in your typical real estate agent office.

Whether you require the full array of services or not, TCRE will fully assist you in your home shopping or selling experience. We want to help you search for the new home or investment property that meets your needs.

PO Box 372, Madison, NH 03849  
(603) 367-9841 • cell (603) 662-9841  
www.totalconceptnh.com



### Our Real Estate Services offer both Commercial and Residential brokerage as well as Short Term/Vacation Rental, and Long Term Rental Services.

Total Concept is committed to providing full service Real Estate, Management, and Maintenance services for your Residential, or Commercial property. Let Total Concept provide you with the peace of mind of knowing that your property is being professionally, and well, cared for.

**BUYING**— TCRE works with you to help you search for your dream home, commercial space, or prime land. Whether you are seeking investment property or a personal home, we work with you guiding you through the process to make it as smooth and quick as possible.

**SELLING**— Any agent can list a property with basic information. We go beyond by providing complete documentation to help move your property to closing as quickly as possible. We actively seek out potential buyers and offer guidance to help you put your best foot forward when showing your home.

**RENTALS**— TCRE also handles short or long term vacation or home rentals. We can help locate a property for you or assist in renting your investment property. We work with residential, vacation, and commercial properties.



Fireplace Martini Lounge & Casual Dining  
Homemade wood-fired bread and pizza meet seasonal salads,  
pit-smoked prime rib, Maine seafood and Manor-made pasta.

The  
*Wild*  
Rose

RESTAURANT at Stonehurst Manor



Look for our two-page ad with menu inside.

3351 White Mountain Highway, North Conway, NH 03860  
603-356-3113 • [TheWildRoseRestaurant.com](http://TheWildRoseRestaurant.com)





Cherry Pond at Pondicherry Wildlife Refuge in Jefferson.

# Above the Notch

## Finding your adventure in the Great North Woods



Main Street in Berlin is decorated for the season. (FILE PHOTO)

Just “over the Notch” from North Conway are Berlin and Gorham, truly the heart of New Hampshire’s North Country and the entry to what is called the Great North Woods. To get there, go north on Route 16 through picturesque Jackson, then up and over Pinkham Notch.

On the way of this 35-mile scenic trip are Appalachian Mountain Club Visitor Center (base station for hikes up Mount Washington, including Tuckerman Ravine), Wildcat Ski Area, and Great Glen Trails Outdoor Center, which offers Snow Coach tours up part of the Mount Washington Auto Road, as well as ski touring and tubing.

Popular recreation north of the notch includes snowmobiling — there are hundreds of miles of snowmobiling trails — along with backcountry skiing, cross country and snowshoeing on trails in state parks and the White Mountain National Forest. Some local outfitters also offer dogsled rides.

In Berlin, the recently rebuilt Notre Dame Ice Arena, offers public skating, broomball and hockey programs.

North of the “Notch” is Gorham, truly the entrance to another world. Here you’ll enjoy nearby attractions, quaint shops, and culinary delights. Gorham is at the crossroads of the north-south running Route 16 and east-west Route 2, and has the feel of a tourist town.

Minutes away is Berlin, a city with a totally different vibe. Dominated by people of French Canadian descent, but also a melting pot of European immigrants, who worked in the now shut-down paper mill, this once vibrant city of 20,000 has turned a corner from a long decline.

Here you’ll find culture offerings like a Russian Orthodox church, St. Anne’s Church, one of the most beautiful catholic churches in New England, as well as new shops and restaurants.

An interesting side trip is to the Brown Company Barns (Brown Company is the name of the former paper mill) at 137 East Milan Road,



// SALES // SERVICE // PARTS // RENTALS // FINANCE

**YOUR ADVENTURE BEGINS AT MOMS.**



**THE LARGEST POLARIS DEALER IN THE NORTHEAST**

**POLARIS®**

**MOMS**

North Country Powersports

Since 1973



[WWW.MOMSNORTHCOUNTRY.COM](http://WWW.MOMSNORTHCOUNTRY.COM)

**603-636-6667**

149 STATE ST. GROVETON, NH 03582

MOMS NORTH COUNTRY SPORTING GOODS  
CAMPING | FISHING | HUNTING | SURVIVAL SUPPLIES



**LOCATED INSIDE**

MOMS NORTH COUNTRY POWERSPORTS

**603-636-6667**

149 STATE ST. GROVETON, NH 03582



The Nansen Ski Jump in Berlin is being brought back to life after years of inactivity, with the hope of attracting a sanctioned jumping competition for top junior ski jumpers as a centerpiece of the annual winter festival put on by the Nansen Ski Club, the oldest ski club in the nation.



Sarah Hendrickson makes a jump off the Nansen Ski Jump in Milan in a jump sponsored by Red Bull in 2017. (COURTESY PHOTO)



**Snowmobile  
& ATV Rentals**  
northeastsnowmobile.com

**1-800-458-1838**

**\$99  
SPECIAL  
3 hour rental  
Sunday thru  
Friday**

*No experience  
needed.*

**Enjoy the scenic terrain on our NEW Polaris snowmobiles**

**Park and ride at either of our locations...**

**532 Main Street, Fryeburg, ME and 325 Main Street, Gorham, NH**





The Jericho Warming Hut is an offgrid cabin constructed and maintained by the White Mt. Ridge Runners located in Jericho Mt. State Park. (FILE PHOTO)

Berlin, where barn sales are held during the summer months to support the Moffett House Museum and Genealogy Center.

The natural gems, though, are found outside the city. Just a few miles northwest of downtown Berlin is one of the newest additions to the state park system. Jericho Mountain State Park provides opportunities for miles of trail riding for ATV, UTV, trail bike, cross

country skiing and snowmobile enthusiasts alike. The place is great to ride the 100-plus miles of trails with plenty of views and wildlife to see.

And it's worth a drive even further north along the Androscoggin River through 13 Miles Woods to its source: Lake Umbagog, a huge National Wildlife Refuge. It's a great place to see eagles, moose and other wildlife.



ABOVE: Dogsledding has made a comeback in the North Country with races, clubs and touring opportunities. BELOW: A skier out with his dog in the Nansen Ski Club Trails in Berlin. (FILE PHOTOS)



## Northland RESTAURANT & DAIRY BAR

Open 7 days a week:  
Monday-Thursday 11 am-8:30 pm;  
Friday & Saturday 11 am-9 pm;  
Sunday 11 am - 8:30 pm

**Traditional American  
Cuisine & Seafood**



1826 Riverside Drive, Rt. 16  
Berlin, NH • 603-752-6210

**Takeout & Eat-in  
Highchairs Available  
Wheelchair Accessible  
Serves Alcohol ~ Full Bar  
Reservations**



**Great Place for Large Groups &  
Reunions, Families with Children,  
and Business Meetings.  
Large Parties Welcome!  
Ample Parking for Large Vehicles  
and Trailers**





## SNOWMOBILING



Many snowmobilers are attracted to the sport by the chance to get out scenic places and enjoy views they would never see otherwise. (FILE PHOTO)

# Open the winter world

Snowmobiling opens up a world of winter fun for everyone, whether you're an enthusiast with your own machine or you rent from a local outfitter.

Terry MacGillivray of Northeast Snowmobile Rentals and Peter Gagne of Northern Extremes agree that snowmobiling is a sport the family can enjoy.

"We get people to places in winter that they otherwise would not have a chance to get to physically," said MacGillivray, who has locations in Gorham, N.H., and in Fryeburg and Bethel, Maine. "A lot of people think snowmobiling is for motorheads who want to spin their tracks and go fast.

"But it's really about getting out to scenic places to enjoy the view, shut off the machine, and enjoy the quiet of the woods. We take people to the top of Black Cap (behind Cranmore in North Conway), which would otherwise take a long time, and they would never get there," said MacGillivray.

Added Gagne, whose company has locations in Bartlett and Bretton Woods: "It's a great opportunity to explore the outdoors. It's an alternative to skiing for folks who might not normally venture outdoors in winter. Some like the feel of



Visit Our 2 Locations



### Franconia Notch

603-823-7177

Interstate 93 Exit 34B,

Open Daily from June - March

The permanent exhibit features a coherent timeline of skiing from its prehistoric roots up through the advent of the modern shaped ski and the part played in its acceptance by Franconia native Bode Miller. Temporary exhibits change annually.

### North Conway

603-730-5044

2628 White Mountain Highway

Open Daily

Visitors explore exhibits and audio-visual displays about Tuckerman Ravine, the 10th Mountain Division, lost ski areas, New England Olympians and more.



Both locations have museum shops with unique skier gifts.

Admission is free, with donations gratefully accepted.

[NewEnglandSkiMuseum.org](http://NewEnglandSkiMuseum.org)



A life outdoors is a life well lived

## RENTALS

Backcountry Skis

Downhill Skis

Nordic Skis

Snowshoes

Snowboards

Splitboards

and More!

## GUIDED

## EXPERIENCES

Ice Climbing

Snowshoeing

Cross Country Skiing

Winter Hiking series

Views and Brews

Overnight Backpacking

Contact us to gear up for your next adventure!

1498 White Mountain Hwy, North Conway

603-356-0475

[www.rei.com/north-conway](http://www.rei.com/north-conway)





Snowmobiles in Gorham. Snowmobiling is a popular activity in Coos County, with hundreds of miles of trails maintained by New Hampshire Snowmobile Association. (FILE PHOTOS)

the power in the machine. Most of our customers are non-skiers, families who want to go out and see the wilderness.”

Northern Extremes’s offerings include guided Sawyer River to Bear Notch sunset dinner tours in collaboration with Cabin Fever Restaurant of Bartlett.

With operations in different locations, Gagne and MacGillivray cover their bets when it comes to weather and snow conditions. North Conway does not always have the snow, but Bear Notch is a snowbelt,” Gagne said.

— Tom Eastman

# CHOCOLATE, CHOCOLATE, CHOCOLATE! AND MORE

## BAVARIAN Chocolate HAUS



Old World taste and excellence is in the heart of the Mount Washington Valley with chocolate confections handmade on the premises. Look into our kitchen as we work making mouthwatering candies, confections and fudge!

TRUFFLES • CHOCOLATE COVERED PRETZELS  
WINTERGREEN PATTIES • SEA SALT CARAMELS  
PEANUT BUTTER SHELLS • COCONUT CLUSTERS  
MT. WASHINGTON MEDLEY FUDGE  
CHOCOLATE COVERED RASPBERRY JELLIES  
BUTTERCRUNCH • SUGAR-FREE SELECTIONS  
CHOCOLATE DIPPED APRICOTS  
AND MORE AND MORE AND MORE!!

Open 7 days a week • [www.bavarianchocolatehaus.com](http://www.bavarianchocolatehaus.com)  
2483 White Mountain Highway, North Conway Village • 603-356-2663  
25+ Years of Making Chocolate Confections in the  
Mt. Washington Valley and now a 2nd Location:  
2 Cottage Street, Bridgton Maine • 207-647-2400

# Goggles and More!

**Largest Selection Anywhere! Over 1,000 Ski Goggles In Stock!**



**Sorel Winter Boots are all ON SALE!**



**We Sell Winter Outerwear for Men, Women & Kids, from The North Face & Patagonia.**



# Synergy

2706 White Mtn. Hw., North Conway Village  
(directly across from Sun & Ski)  
603-356-5039  
[www.SynergySportswear.com](http://www.SynergySportswear.com)





## Book Your Event

- Private Seating for 20-100+ Guests
- Buffet or Plated Dinner options
- Summer Outside Garden Patio Seating
- Rehearsal Dinners, Bridal Showers, Birthday Parties and more!



More information can be found at [RedFoxBarAndGrille.com](http://RedFoxBarAndGrille.com)

49 Route 16 | Jackson Village, NH  
RedFoxBarAndGrille.com or call 603.383.4949



Hundreds of miles of snowmobiling trails have been developed in northern New Hampshire. (JAMIE GEMMITI PHOTO)

## Resources

- Northeast Snowmobile Rentals of Fryeburg, Bethel and Gorham: (800) 458-1838 or [northeastsnowmobile.com](http://northeastsnowmobile.com)
- Northern Extremes of Bartlett and Bretton Woods: (603) 374-6000 or [northernextremessnowmobiling.com](http://northernextremessnowmobiling.com)
- Profile Powersports in Albany offers sales: (603) 447-5855
- N.H. Snowmobile Association: (603) 273-0220 or [nhsa.com](http://nhsa.com)
- N.H. Fish and Game: (603) 271-3129 or [wildlife.state.nh.us/OHRV/ohrv.htm](http://wildlife.state.nh.us/OHRV/ohrv.htm)
- N.H. Bureau of Land and Trails, which updates state snowmobile conditions: (603) 271-3254 or [nhstateparks.org/experience/snowmobiling](http://nhstateparks.org/experience/snowmobiling)

**WE ARE MORE THAN JUST  
A CARPET STORE!**



A GENROSE Company

**LARGEST SELECTION IN THE VALLEY:**  
**Ceramic Tile - Luxury Vinyl - Hardwood - Carpet**  
**FULL DESIGN & INSTALLATION SERVICES AVAILABLE**

Showroom Hrs: Mon-Fri 7:30am-5pm, Sat. 9am-1pm  
179 Rt. 16/302, Intervale, NH  
Just 2 miles from N. Conway Village  
603-356-6031 • [milfordflooring.com](http://milfordflooring.com)



*Personal Chef Cooking Services for:*  
Busy Families ~ Seniors ~ Vacationers/Weekenders  
Hospital Recovery Patients ~ Parties & Charity Fundraisers  
Physical Therapy Rehab Patients



*Because everyone can use some help  
in the kitchen sometimes.*

Call Chef Sue Ficken 603.986.9411  
or email [sue@valleygourmet.net](mailto:sue@valleygourmet.net)  
Visit [www.valleygourmet.net](http://www.valleygourmet.net) for menus and more info.



# THE MOUNTAIN WHERE THE ACTION IS

## WHAT YOU'LL FIND HERE:

- Skiing and riding for all ability levels
- KidsRule Mountain Camps
- NH's Best Snow Tubing
- Mountain Coaster, Giant Swing & Zip Line
- Night Skiing, family events, and activities

Go to [cranmore.com](http://cranmore.com) for the latest news



North Conway, NH  
[cranmore.com](http://cranmore.com) • 1-800-SUN-N-SKI

  
**cranmore**  
MOUNTAIN RESORT north Conway



# Outlet deals

Shopping is a year-round activity in North Conway, home to Settlers Green Outlet Village and the boutique shops of North Conway Village.

Best yet, New Hampshire has no sales tax, so thrifty bargain conscious shoppers can save on their purchases compared to shopping out of state.

Settlers Green Outlet Village opened in 1988, and is home to a collection of national brand, high-end outlets, grouped together in an outdoor village setting.

Settlers Green today has stores on both sides of Route 16, with Settlers Crossing, home to L.L. Bean and Eastern Mountain Sports among other shops, and is its latest build-out, Settlers Streetside, which opened in 2017.

Visitors can find sculptures and other art installations throughout the center and Settlers Green holds promotional and entertainment events throughout the year to enhance shoppers' savings and fun.



A busy day at Settlers Green. (JAMIE GEMMITI PHOTO)



**Call EXIT Realty Leaders**  
**Serving NEW HAMPSHIRE**  
**Let us help you find your Perfect Home!**



**We have moved to our new, larger office**  
**Visit us at our new location**  
**810 Rt. 16, Ossipee, NH**  
**(1/2 mile south of Jct. Rt. 16 & 28)**  
**603-539-9595**  
**www.EXITRealtyLeadersNH.com**

## EXIT Realty Leaders

### Real Estate Professionals of New Hampshire

EXIT Realty Leaders is a full-service real estate company, located in Carroll County. We work with buyers to find their perfect vacation, year-round or investment property.

We also offer an easy way to see all the info, plus video and photos, of any property on the market. Just text 85377 to EXIT. This also gives our sellers an edge, as their properties are easily accessible to any prospective buyer with a smartphone in hand.

Visit our new office at 810 Rt. 16 Ossipee (1/2 mile south of Jct Rt 16 & 28).

We serve all your New Hampshire real estate needs, from the North Conway area south to Portsmouth and west to Winnepesaukee!



**Call today!**  
**(603) 539-9595**  
**in Ossipee**



## Unique finds

North Conway Village is a hub of small boutiques, featuring local and New Hampshire-made items, many of which you won't find elsewhere.

The downtown shops include Zeb's, which sells many New England-made items and has a large candy counter; an old-fashioned 5 and 10 cent store; White Birch Books, an independent bookstore; and Fields of Ambrosia, selling bath and body care products.

The village also has two coffee shops and several restaurants.

Many of the shops in North Conway Village and elsewhere in the Mount Washington Valley are locally owned and are members of The White Mountain Independents, a network of locally owned and independently operated retail businesses in the valley.

The group works to support shopping local with events, coordinated sales and other promotions.

Find out more at [whitemountainindependents.com](http://whitemountainindependents.com).



Shoppers outside Zeb's on Main Street in North Conway Village. (JAMIE GEMMITI PHOTO)



## That Fresh Air Feeling

Our communities are filled to the brim with all things incredible. Mountain vistas. Rushing rivers. Covered bridges. White steeple churches. Endless adventures. Museums for all ages. A music hall. A performing arts theater. It's not only the things we have though. It's the people. Afforded both the luxury of privacy and a sense of belonging, the charm of small-town living is not just an ideal. For us, it's an everyday way of life. And we'd love to have you join us.



Theresa Bernhardt  
Realtor®  
TheresaB@kw.com  
c: 603.986.5286



Sharrene Henderson  
Licensed Assistant  
Sbernhardt@kw.com  
c: 603.986.9288



International Mountain Climbing School, Inc.

**"It is time  
to climb!"**

**Beginner to Advanced**

- Rock Climbing
- International Expeditions
- Ice Climbing
- Mt. Washington Ascents
- Family Climbs
- Mountaineering Courses
- Climbing Since 1974

**27th Annual  
Mt. Washington  
Valley Ice Fest  
Jan. 31 - Feb. 2, 2020!**  
[www.mwv-icefest.com](http://www.mwv-icefest.com)

2733 White Mountain Highway (Main St)  
North Conway Village • (603) 356 7064  
[guides@ime-usa.com](mailto:guides@ime-usa.com) [www.ime-usa.com](http://www.ime-usa.com)



Try One Of Our  
Delicious, Mouth-Watering  
**GrillBurgers!**



*Your Hosts, The Filip  
Family Since 1968!*

**Grill & Chill®**

1561 White Mtn. Hwy.  
North Conway  
356-5555



NORTH CONWAY  
**HOUSE OF  
JERKY®**

A great snack for skiing, snowmobiling, hiking, skating,  
snowshoeing, exploring, shopping... really everything!

Bring House of Jerky along and...

Let  
the  
adventure  
continue

PREMIUM QUALITY JERKY  
BEEF | TURKEY | WILD BOAR  
VENISON | SALMON | BUFFALO  
KANGAROO | CAMEL | ALLIGATOR | PORK  
PINEAPPLES | EXOTICS

[www.northconwayhouseofjerky.com](http://www.northconwayhouseofjerky.com)

603-730-5474  
North Conway Village,  
next door to North Conway  
Olive Oil

603-730-5515  
Settlers Green in the  
North Conway Olive Oil  
Store, D46

Only  
The Best  
From Mexico

SIZZLIN' FAJITAS

FROZEN MARGARITAS



**"Every Time We Come To The Valley  
This Is Our First Stop!"**

**This ain't no chain food!**

OPEN DAILY: MONDAY-THURSDAY 4:30-9PM  
FRIDAY-SUNDAY 11:30AM-9PM  
[WWW.CAFENOCH.NET](http://WWW.CAFENOCH.NET)



**FULL LIQUOR  
CHILDREN'S MENU  
TAKE-OUT**



**147 Main St., Conway • 447-5050**



# Liquid gold

## 'A taste to excite your imagination'

What if there was a way to take your cooking up a level or two and add some health benefits to the way you cook at the same time?

Welcome to the world of ultra pure premium olive oils and balsamic vinegars. The North Conway Olive Oil Co., located in downtown North Conway and in Settlers Green, has over 80 varieties of some of the freshest olive oils and balsamic vinegars in the world.

In the shop is a tasting bar where you can sample all the flavors before you buy, as well as receive suggested pairings for any dish you can imagine.

How about a spicy Baklouti green chile olive oil paired with a mango balsamic for a fish taco or mango salsa? Just the right amount of heat and sweet! A Tuscan herb olive oil and an 18-year-old balsamic creates an unbelievable dipping oil for bread. Another great idea is an espresso balsamic to marinate your steak tips or meat. Just stop in and let the friendly staff suggest something for you. They promise you will be blown away by the taste and freshness.

North Conway Olive Oil Co. olive oils are ranked 95-98 out of 100, some being crushed just over a month ago, and containing high levels of Polyphenols, an antioxidant in olive oil that research has shown to reduce blood pressure, lower cholesterol and have cancer-reducing abilities. There is also research indicating it helps with Alzheimers. North Conway Olive Oil is also only one



of a handful of olive oil stores in the United States with the designation of ultra premium olive oil. This standard exceeds world standards for olive oil quality.

The store's balsamic vinegars are also the highest quality and are aged from 12-25 years. All are from Modena, Italy, and contain no added sugars, preservatives or salts and all of the store's products are non-GMO and gluten-free.

At North Conway Olive Oil Co., you'll find "a taste to excite your imagination."

**A TASTE TO EXCITE  
THE IMAGINATION**



**TAKE COOKING TO  
A WHOLE NEW LEVEL**



**Over 85 different Olive Oils and Balsamic Vinegars. Non-GMO, gluten-free, and no preservatives or added sugar**

**Settlers Green Unit D46, North Conway, 603-730-5515 (next to WM Cupcakery)  
2730 White Mtn. Hwy., North Conway, NH 603-307-1066  
[www.ncoliveoil.com](http://www.ncoliveoil.com)**



# Concerts

## STONE MOUNTAIN ARTS CENTER

695 Dugway Rd, Brownfield, Maine • (207) 935-7292

The Stone Mountain Arts Center in Brownfield, Maine, presents nationally-renowned acts throughout the year. The doors open at 6 p.m. for dinner; shows start at 8 p.m. unless otherwise noted.

Scheduled performances include:

**Dec. 20, 21:** Stone Mountain Live for Christmas  
**Dec. 27, 28:** Peter Wolf and the Midnight Travelers  
**Dec. 31:** Jonathan Edwards  
**Jan. 17:** Susan Werner  
**Jan. 18:** Roomful+ of Blues

**Feb. 1:** Richard Thompson  
**Feb. 7:** True Blues with Corey Harris and Cedric Watson  
**Feb. 14:** Gaelic Storm  
**Feb. 21:** JigJam  
**Feb. 25:** Heather Pierson  
**Feb. 29:** Alana MacDonald  
**March 3:** Robert Cray Band  
**March 7:** Los Lobos  
**March 13:** Glen Phillips and Chris Barron  
**March 21:** Kat Edmonson  
**March 26:** Birds of Chicago (free show)  
**March 28:** Ward Hayden & the Outliers  
**April 17:** Song Stage featuring Abigail Lapell, David Greely and Zak Trojano  
**April 18:** Mike Farris  
**April 23:** Junco  
**April 25:** Judith Owen



Bennett & Perkins performs at Stone Mountain Arts Center in Brownfield, Maine. (COURTESY PHOTO)

DINE | INDULGE | RELAX



# THORN HILL

Make a reservation today for our signature dining experience, indulge in our spa, or simply escape to the lap of luxury.

603.383.4242



INNATTHORNHILL.COM

LUXURY BOUTIQUE INN, DINING & SPA

# Atlantic Pool & Spa, LLC.

We make water care easy!



**Your Local Pool, Spa & Sauna Dealer**  
 Year Round Pool & Hot Tub Maintenance

2101 White Mountain Highway  
 North Conway, NH 03860  
[www.atlanticpoolandspa.com](http://www.atlanticpoolandspa.com)  
 (603) 356-0039





# LIVING SHORES<sup>TM</sup> AQUARIUM AT STORY LAND

**NOW OPEN DAILY, 10AM-5PM!**

Living Shores Aquarium at Story Land is an indoor, walk through experience that will delight you! Over 32,000 square feet of interactive tide pools, activities, and exhibits await you and your family as you discover the wonders of the aquatic world. Touch sting rays and bamboo sharks, meet our friendly lorikeets, watch otters swim and play, and so much more!

**BUY TICKETS AT [LIVINGSHORES.COM](https://www.livingshores.com)**



# Live music

Live music is featured throughout the valley at pubs, including the following:

**Red Parka Pub**, 3 Station St, Glen • (603) 383-4344 • weekends and Mondays.

**Shannon Door Pub**, 19 Spencill Hill Rd, Jackson (603) 383-4211

**Wildcat Inn and Tavern** 94 Main St, Jackson (603-383-4245)

**Shovel Handle Pub** 357 Black Mountain Rd • (800) 677-5737)

**McGrath's Tavern**, 3465 White Mountain Hwy, North Conway • (603-733-5955) • Thursdays.

**May Kelly's**, 3002 White Mountain Hwy, Conway • (603-356-7005) • Sunday afternoon Celtic music.

**Deacon Street Restaurant**, 32 Seavey St, North Conway • (603)356-9231 • Friday and Saturday evenings.

**Sea Dog Brewing Co.** (603-356-0590) Fridays and Saturdays

**Almost There**, 1287 NH-16, Albany • (603) 447-2325 • Fridays.

**Route 302 West Smokehouse**, 636 Main St, Fryeburg, Maine • (207) 935-3021.

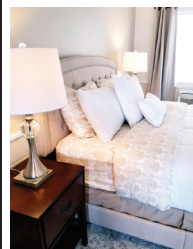
**Top of the Ninth/Fryeburg House of Pizza**, 11 Portland St, Fryeburg, Maine • (207-935-4172),

**Lake Kezar Country Club at Ebenezer's Pub**, 578 Main St, Lovell • (207) 925-3200.

**Corner House Inn**, 22 Main St, Center Sandwich • (603) 476-3060 • Music and storytelling.



Acoustic Nuisance performs at a Cold River Radio Mini-Show at the Wildcat Tavern. The Cold River Radio Show will feature Acoustic Nuisance again on Dec. 14 and will feature Jordan Tirrell-Wysocki Trio on Feb. 29. (TOM EASTMAN PHOTO)



## Starlight Lodge —NORTH CONWAY—

Mt. Washington Valley's Newest Boutique Lodging Experience

*"Yesteryear with a Modern Twist!"*

**Trip Advisor Award of Excellence Winner 2019.**  
**Affordable. Convenient. Luxury.**

Free WiFi/Cable | Luxury Bedding | Free in lobby coffee daily  
Flat/smart screen tvs | Firepit evenings | Scenic mountain views

**Immediate access to hiking and ski trails alongside our beautiful formal Red Barn Garden.**

Minutes to Mt. Cranmore & Ski Resorts, StoryLand (8 min),  
National Forest, hiking, biking, canoe, cross-country trails on-site

*Winter Wonderland-*  
*Open all Seasons*  
**603-356-3551**



3537 White Mountain Highway North Conway, NH | 603-356-3551 | starlightlodenorthconway.com





# Comfort INN & SUITES

Book direct & save at  
the nation's #1 rated

**603-356-8811**

2001 White Mountain Highway  
North Conway, NH 03860

[northconwaycomfortinn.com](http://northconwaycomfortinn.com)

## SAWYER RIVER TRADING CO.

Fine Cutlery • Sport Knives  
Quality Cookware • Chef's Attire  
Kitchen Accessories • Knife Sharpening

**CELEBRATING 21 YEARS!**

[SawyerRiver.com](http://SawyerRiver.com)

**SPORT KNIVES**  
**LEATHERMAN**  
**BUCK**  
**SWISS ARMY**  
**GERBER & MORE**  
Special Orders &  
Shipping Available



**BEST "LITTLE" SHOP IN TOWN!**

Norcross Place • North Conway Village • 356-4155

## Zeb's General Store in the Village of North Conway



*Enjoy our wonderful historic village with many shops, restaurants  
AND Zeb's - a shopping experience unlike any other*

**Zeb's General Store**

Main St., Village of North Conway • 603 356-9294 • [www.zebs.com](http://www.zebs.com)



# Resources to help you plan your trip

## VISITOR INFORMATION

### North Conway Village

Mt. Washington Valley Chamber of  
Commerce  
(603) 356-5947  
2617 White Mountain Hwy  
North Conway  
mtwashingtonvalley.org

### Scenic Vista

(603) 356-2769  
3654 White Mountain Hwy • Intervale  
visitnh.gov

### Saco River Ranger Station

(603) 745-3816  
33 Kancamagus Hwy • Conway  
fs.usda.gov/whitemountain

### Conway Village

(603) 447-2639  
250 Main St. • Conway

## Medical

### Memorial Hospital

(603) 356-5461  
3073 White Mountain Hwy  
North Conway  
memorialhospitalnh.org

### Huggins Hospital

(603) 569-7500  
240 S. Main St. • Wolfeboro  
hugginshospital.org

### Saco River Medical Group

(603) 447-3500 • (603) 383-3005  
7 Greenwood Ave. • Conway  
15 US Route 302 • Glen  
sacodocs.com

### White Mountain Community Health

Center • (603) 447-8900  
298 White Mountain Hwy • Conway  
whitemountainhealth.org

## Grocery Stores

### Hannaford Supermarket

(603) 356-6341  
32 Mountain Valley Blvd  
North Conway  
**Hannaford Supermarket**  
(603) 539-7531  
891 NH 16 • Ossipee  
hannaford.com

### Shaw's Supermarket

(603) 356-5471  
1150 Eastman Road  
North Conway  
shaws.com

### Grant's Shop'n Save

(603) 383-4282  
9 US Route 302 • Glen  
grantsshopnsave.com

### Valuland Food Store

(603) 539-4416  
Indian Mound, 280 NH 16B  
Center Ossipee

### Walmart Supercenter

(603) 356-0130  
46 North-South Road  
North Conway

## Libraries

### North Conway Public Library

(603) 356-2961  
2719 Main St. • North Conway  
northconwaylibrary.com

### Conway Public Library

(603) 447-5552  
15 Greenwood Ave. • Conway  
conwaypubliclibrary.org

### Bartlett Public Library

(603) 374-2755  
1313 US-302 • Bartlett  
bartlettpubliclibrary.org

### Jackson Public Library

(603) 383-9731  
52 Main St • Jackson  
jacksonlibrary.org

### Madison Public Library

(603) 367-8545  
1885 Village Rd • Madison  
madisonlibrary-nh.org

### Freedom Public Library

(603) 539-5176  
38 Old Portland Rd • Freedom  
freedompubliclibrary.org

### Chocorua Public Library

(603) 323-8610  
25 Deer Hill Rd • Chocorua  
chocorualibrary.org

### Cook Memorial Library

(603) 323-8510  
93 Main St • Tamworth  
tamworthlibrary.org

### Ossipee Public Library

(603) 539-6390  
74 Main St • Center Ossipee  
lib.nh.us



**White Mountain  
PHOTO GALLERY**

95 Main St., Jackson, NH • 603-374-6050  
whitemountainphoto.com

## A BETTER BODY with Marylou Dow

Exercise Physiologist • Fitness Practitioner • Nutritionist

*"I can help you reach your  
goals and make this year a  
complete success!"*

Route 153, Eaton, NH (next to King Pine)  
**978-518-6014**

 Like us on FB: [www.facebook.com/abetterbodyfit/](http://www.facebook.com/abetterbodyfit/)



 **It's My Girlfriend's  
Consignment Boutique**

LOCATED IN THE LOBBY OF EASTERN SLOPE INN  
NORTH CONWAY VILLAGE • OPEN DAILY 10-5



**603-733-5144**  
**WWW.ITSMYGFRIENDS.COM**

## FAMILY STYLE TIMESHARE CONDO RESORT

**Nights Or Weekly Rentals!  
Or Save \$\$\$ And Become  
An Owner!!**

Central To All North Conway  
Attractions!!  
603-356-6335

[info@cathedralledgesort.com](mailto:info@cathedralledgesort.com)  
[www.cathedralledgesort.com](http://www.cathedralledgesort.com)

**CATHEDRAL  
LEDGE  
RESORT**





## Liquor Stores

New Hampshire State Liquor and Wine Outlet Stores do not sell beer, which can be found at convenience stores or supermarkets in the state.

### NH Liquor & Wine Outlet #23

(603) 447-2782  
234 White Mountain Hwy • Conway

### NH Liquor & Wine Outlet #54

(603) 383-9000 • 65 US 302 • Glen

### Discount Beverages

Plus Cigarettes  
(603) 356-8844  
1130 Eastman Rd • North Conway

### Vista Bev & Market

(603) 356-5084  
10 Hurricane Mountain Rd • Intervale

## Movie Theaters

### Mt. Valley Mall Theatre

(603) 356-6410  
Route 16 • North Conway

### Magic Lantern

(207) 647-9326  
9 Depot St • Bridgton, Maine

## Police Stations

### Conway Police Station

(603) 356-5715  
35 East Conway Rd • Center Conway

### NH State Police Troop E

(603) 323-3333  
1864 White Mtn Hwy • Tamworth

### Carroll County Sheriff

(603) 539-2284  
95 Water Village Rd • Ossipee

### Ossipee Police Station

(603) 539-2011  
7 Dore St, Center Ossipee

### Tamworth Police Station

(603) 323-8581  
100 Tamworth Rd, Tamworth

### Madison Police Station

(603) 367-8334  
1923 Village Rd • Madison

### Freedom Police Station

(603) 539-8268  
218 Village Rd • Freedom

### Effingham Police Station

(603) 539-5380  
218 Village Rd • Freedom

### Bartlett Police Station

(603) 356-5868  
56 Town Hall Rd • Bartlett

### Jackson Police Station

(603) 383-9292  
54 Main St • Jackson

## Mailing

### North Conway Post Office

78 Grove St. • North Conway

### Conway Post Office

175 Main St. • Conway

### The UPS Store

(603) 356-4881  
1857 White Mountain Hwy  
North Conway

## Laundromats

### Seavey Street Laundromat

60 Seavey St. • North Conway

### Jem Coin Laundry

73 Main St. • Conway

### Acorn Wash & Dry

175 Main St. • Conway

## DIRECTORY

## Coffee Shops

### Dunkin Donuts

Conway: (603) 452-5311  
402 W. Main St. • Conway  
North Conway: (603) 356-5676  
1946 White Mountain Hwy • North Conway  
Glen: (603) 374-9088  
539 US 302 • Glen

### Starbucks

(603) 356-6860  
1456 White Mountain Hwy  
North Conway

### The Met Coffee House

(603) 356-2332  
2680 White Mountain Hwy  
North Conway

### Aroma Joe's Coffee

(603) 662-0491  
Shaw's Way • North Conway  
2315 White Mountain Hwy  
West Ossipee

### Frontside Coffee Roasters

(603) 356-3603  
2697 White Mountain Hwy • North Conway

# RENTALS

Cars, Vans, Suv's, Pick Up Trucks, Moving Trucks, too!



Agent for Hertz Car Rental  
and Penske Truck Rental



Glen Warehouse  
304 US RT 302, Glen, NH  
603-986-5936  
Open Daily,  
Closed on Sundays

**AAA Discounts**

**SUNSET  
MATTRESS FACTORY**  
*Better Nights – Make – Better Days!*  
**Custom Made Mattresses & Box Springs Since 1953  
Specializing in Standard, Antique & Custom RV Sizes**  
85 County Farm Rd., Ossipee, NH • 603-539-6256  
[www.sunsetmattressfactory.com](http://www.sunsetmattressfactory.com)



**Sleds, tubes, gloves  
and mittens,  
Dickie overalls,  
Muck  
boots and more!**

**We have everything  
you need for  
Winter  
Season  
Fun!**



Rt. 16 & 302, Intervale • 356-0757 • [www.lucyhardware.com](http://www.lucyhardware.com)  
Open 7 Days — Monday-Friday 7-5:30; Saturday 7-5; Sunday 8-4



**EARLY RISER  
SPECIALS**

Monday-Friday  
6:00am – 8:00am

**“Welcome Home”**

**“It’s not just about the food, it’s the experience.”**

**OPEN AT 6AM!**

[www.PriscillasNH.com](http://www.PriscillasNH.com)  
(603) 356-0401 • 2541 White Mtn. Hwy.



**In the TD Bank Parking Lot, just a 3 minute walk from the train station**





Skaters in Schouler Park in North Conway.

## Off-slope fun

CONWAY — You don't have to be a skier to have fun in Mount Washington Valley in the winter. There are plenty of other activities to enjoy before, after or instead of hitting the slopes.

**Adventure parks:** Cranmore Mountain Resort (603-356-5543) offers thrilling downhill rides on its

Mountain Coaster on a half-mile track where you control the speed. The two-person cars are perfect for parents and kids. The Mountain Adventure Park also features a Giant Swing, Soaring Eagle Zipline and ropes course.

Bretton Woods Mountain Resort (603-278-3320)

has a 524-square-foot indoor rock climbing wall in the Bretton Woods Base Lodge. The 30-foot climbing wall includes a variety of routes on modular hand holds and artificial rock. For those who like to stay closer to the ground, the 300-square-foot bouldering cave makes for a fun afternoon.

Bretton Woods also offers a thrilling zipline tour from high on the slopes, descending over 1,000 feet of elevation.

King Pine/Purity Spring Resort (603-367-8896) in Madison is offering ice skating, sleigh rides, snowshoeing and cross-country skiing.

**Brewery tours:** Enjoy a tour and tasting at Tuckerman Brewing Co. (603-447-5400) in Conway Village from noon to 5 p.m. Visit the pub at Sap House Meadery (603-539-1672) at 6 Folsom Road in Center Ossipee and learn about how this sweet nectar is made. Moat Mountain Brewing Co. (603-356-6381) of North Conway and Hobbs Tavern (603-539-2000) on Route 16 in West Ossipee are also great options for enjoying tastings of locally made craft beer. White Mountain Winery (603-356-9463) of Main Street in North Conway offers custom-made wines.

**Ice skating:** Indoor skating available at Conway Village's Ham Arena (603-447-5886) year-round. You'll also find skating under the shelter available at King Pine/ Purity Spring Resort (603-367-8896) and in Schouler Park in the center of North Conway (depending on cold weather). Skate rentals for the latter are available through Sun & Ski Sports (603-356-9411)



It All Starts Here!

# KING PINE

Purity Spring Resort, NH



SKIING, SNOWBOARDING, SNOWTUBING, NIGHT SKIING, ICE-SKATING, SNOWSHOEING, FAMILY FUN EVENTS & SLOPESIDE SKI-IN/SKI-OUT LODGING

kingpine.com 603-367-8896

1251 Eaton Road, East Madison, NH 03836





Premium Cigars ~ Cocktails  
Friends ~ Entertainment  
Relaxation ~ Tomfoolery

# Cigar SHENANIGANS

10% discount for First Responders & Veterans.  
20% discount for Active Military Members.

1903 WHITE MOUNTAIN HIGHWAY  
NORTH CONWAY, NH 03860  
www.CigarShenanigans.com • 603.307.1036



Facebook.com/CigarShenanigans

## Macomber GLASS STUDIO

480 Eaton Road, Conway • 447-1825  
www.macomberglass.com • nate@macomberglass.com



Studio, Gallery,  
Classes Available

Hours are by chance  
or appointment



BLOW GLASS AND MAKE YOUR OWN ORNAMENT



## NORTHERN EXTREMES SNOWMOBILING BARTLETT • BRETTON WOODS



Explore the  
White Mountain  
National Forest



WE OFFER GUIDED TOURS AND SELF-GUIDED RENTALS FOR ALL AGES AND ABILITIES.

### FAMILY SNOWMOBILING PACKAGES

Two double snowmobiles for 2 hours: \$190\*

Each additional snowmobile \$95. Passengers must be 18 and under

RESERVE NOW  
**NXTsnow.com**

**BEAR NOTCH SNOWMOBILE RENTALS**  
(603) 374-6000 • 1328 Route 302, Bartlett

**MT WASHINGTON SNOWMOBILE RENTALS**  
(603) 986-5406 • 2267 Main St, Bretton Woods



in North Conway. Ice skating and rentals are offered at the enchanted Victorian Emerald Pond at Nestlenook (603-383-7101) in Jackson, conditions permitting.

**Tubing:** No special equipment or skills necessary here. Skiers, riders and non-skiers alike will experience the thrill of the downhill run at Mount Washington Valley's tubing parks. Facilities include Cranmore Mountain Resort's Tubing Park (603-356-5543), Purity Spring Resort/King Pine (603-367-8896), Bretton Woods Mountain Resort (603-278-3320 or 603-278-1000) and the walk-up tubing hill at Great Glen Trails (603-466-2333).

**Indoor family fun and fitness:** There's no shortage of fun ways to spend an indoor winter's day. Saco Valley Sports Center (207-935-3777) in Fryeburg, Maine, offers candlepin bowling, pool tables, an arcade, and simulator golf courses. UberBlast Family Entertainment Center (603-356-5655) of North Conway offers an indoor and outdoor fun year-round — be sure to check out the arcade. Many of the larger local hotels have gyms, plus Fryeburg (207-935-4299), A Better Body in Eaton (603-447-1824), Integrity 24-Hour North Conway Fitness (603-733-5572);

Mountain Center Physical Therapy of Glen, Conway and Fryeburg (603-447-2533); White Mountain Aquatic Center (603-447-1824) and Ginger Rober Restorative Health and Fitness (603-986-5037), the Technogym at the Snowflake Inn (603-383-8259) and the new North Conway Community Center (603-356-2096), to name a few. Check with the Mount Washington Valley Chamber of Commerce at (603) 356-5701 or [mtwashingtonvalley.org](http://mtwashingtonvalley.org) for a full listing.

**Indoor water park:** Looking for an indoor swimming adventure? The Kahuna Laguna Water Park (603-356-5411) offers ton of water fun at the Red Jacket Mountain View. The cost is \$50 per person, ages 3 and up. The hours are noon to 8 p.m. on a first-come, first-served basis.

**Museums:** When the weather outside is frightful, come inside to learn more about it at the Mount Washington Observatory's Weather Discovery Center (603-356-2137) in North Conway. It offers interactive displays for budding meteorologists of all ages. For the younger set, the Mount Washington Valley Children's Museum (603-356-2992) offers an educational play

setting in North Conway Village. The New England Ski Museum in the former North Conway Community Center adjacent to Schouler Park in North Conway Village has exhibits about New Hampshire and North Conway's place in skiing history, including a full wall mural of Tuckerman Ravine and exhibits featuring local Olympians, the 10th Mountain Division ski troops. Open daily from 9 a.m. to 4 p.m. For more information, go to [skimuseum.org](http://skimuseum.org) or call (603) 730-5044.

**Spas:** The valley is home to several salons and spas, including the Inn at Thorn Hill (603-383-4242), Christmas Farm Inn and Spa (603-383-4313), Omni Mount Washington Resort (603-278-1000), Tower Spa at the Mountain View Grand (877-935-0356), The White Mountain Hotel, Advanced Skin Care Center and Spa (603-356-7070), Pleasant Image Family Salon & Day Spa (603-356-3437), the Cutoff (603-356-6276) and the Root Cellar (603-356-6995), all in North Conway.

Check with the Mt. Washington Valley Chamber of Commerce at (603-356-5701 or go to [mtwashingtonvalley.org](http://mtwashingtonvalley.org) for a full listing.



**Local's  
Night Every  
Wednesday!\***

10% off Food and Drinks  
for Locals!

#LoveYourLocals

**Salsa Sunday\***  
Every Sunday  
12-9pm

\$2 single tacos  
\$5 house margaritas  
New Delicious Salsas





**MARGARITA  
GRILL**

**78 RTE. 302, GLEN, NH**  
• 603-383-6556 •  
**MARGARITAGRILLNH.COM**  
OPEN AT 4 MON-FRI • NOON SAT & SUN

\*specials not offered on holiday or vacations weeks

**LASER TAG • ARCADE**

**überBlast**

**96 TOKENS \$20**

2129 White Mtn. Hwy., Rt. 16,  
North Conway, NH 03860

**WWW.UBERBLAST.COM • 603-356-5655**

*No general admission charge. Pay as you play!*

**TAMWORTH**



**Gamping Area**

*Family Camping in a Farm Setting on the Swift River*

194 Depot Rd., Tamworth, NH 03886

**800-274-8031**

[www.tamworthcamping.com](http://www.tamworthcamping.com)





**Best Asian  
Restaurant**



**Best Asian  
Restaurant &  
Best Take-Out**



**Best  
Pad Thai**



**2010  
THROUGH  
2019**

**1857 White Mtn. Hwy, No. Conway**  
at Willow Commons next to Luchador Tacos • 603-356-7624  
Hours: Mon-Sat Lunch & Dinner from 11:30am.  
Sunday, Dinner only from 4pm





Conway Scenic Railroad's steam engine Dwight A. Smith 7470 crosses Route 16 in North Conway. (JAMIE GEMMITI PHOTO)

## Special events

There are a number of special events throughout the winter to make the holidays bright and vacation weeks special, and to celebrate skiing and other activities that depend on an abundance of snow.

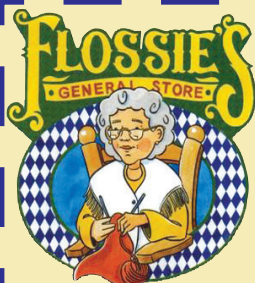
Here is a sampling:

- New Year's Eve celebrations: North Conway and local resorts plan fireworks, music and other entertainment to ring in the new year. Fireworks are set for the Omni Mount Washington Resort (603-278-1000) at Bretton Woods on Dec. 31 at 10 p.m.; Cranmore Mountain Resort at 6 p.m. and Attitash Mountain Resort at 6:30 p.m.; North Conway's Schouler Park at 9:30 p.m.; and King Pine at 9:45 p.m.

Cranmore, King Pine, Attitash, Bretton Woods and the Omni Mount Washington Resort have a full day of on- and off-snow activities planned. See their websites for more information.

- Steam in the Snow: Saturday, Jan. 4, Mass Bay Railroad Enthusiasts' popular steam-powered photographers' special train excursion on the Conway Scenic Railroad returns after a five-year hiatus. Go to [conwayscenic.com](http://conwayscenic.com) for details.

- Moonlight ski and snowshoe tours: Several Nordic centers offer guided moonlight snowshoe and/or ski tours. King Pine: Jan. 4, Feb. 8, March 7 at 7 p.m. Great Glen: Dec. 28, Jan. 4 and 18 and Feb. 15, 16 and 22, at 7 p.m.



**GIFT EMPORIUM**  
Local & New England Products

### An Eclectic Assortment of Goodies Including:

- Melissa & Doug Puzzles • Gifts • Puzzles
- Home Accessories • Candles • Soaps
- Cards • Kitchen Gadgets • Candy
- Plush Toys • Local Photography
- Jackson Sweatshirts & T-Shirts
- Garden Spinners
- Hot Air Balloons and Much More!

*Now selling*

*White Mountain Winery wines!*

*New Products Arriving Weekly!*

Next to the covered bridge in Jackson Village  
603-383-6565 • [www.flossiesgeneralstore.com](http://www.flossiesgeneralstore.com)  
Closed Tuesday & Wednesday - Call ahead for hours



Shop Local at  
one of over 20  
Local Shops!

# Shalimar

## Authentic Indian Cuisine



**Vegetarian &  
Non-Vegetarian Dishes**  
Flavorfully mild,  
spiced upon request

*Serving Lunch  
and Dinner*



**Rte 16, North Conway • 356-0123**  
**[www.shalimarofindianh.com](http://www.shalimarofindianh.com)**



# ESCAPE ROOMS



## MYSTERY **NH**

**FIND THE CLUES. SOLVE THE PUZZLES.  
CRACK THE CODES. ESCAPE THE ROOM!**

# www.MysteryNH.com

32 Mountain Valley Blvd., North Conway  
In the Mountain Valley Mall, next to Cinema 7



Revelers celebrate New Year's Eve with fireworks in Schouler Park in North Conway. (JAMIE GEMMITI PHOTO)

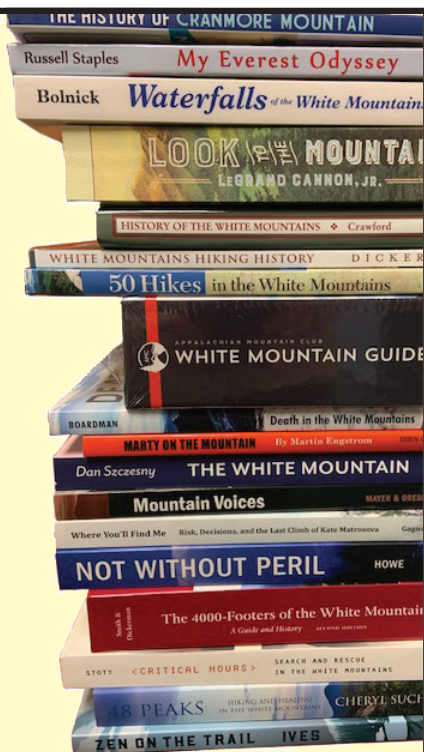
- **Snowshoe Scramble:** The 10th annual Whitaker Woods Snowshoe Scramble 4-mile race takes place at 10 a.m. Jan. 18 on the intown trail network in North Conway Village maintained by the Mt. Washington Valley Ski Touring Foundation. Go to [mwvskitouring.com](http://mwvskitouring.com) for more information.

- **The Geschmossel.** The 47th Geschmossel Classic Ski Race, Jan. 20 at Bretton Woods is one of New England's oldest citizens' races. The 15K race is

part of the Zak Cup Series and attracts high-level Nordic skiers from around the country, including members of the United States Ski Team. Find out more at [brettonwoods.com](http://brettonwoods.com).

- **Jackson Invitational Snow Sculpting Competition,** Jan. 24-26. Black Mountain plays host to teams from all over the Northeastern part of the United States who will sculpt throughout the weekend and finish up at noon on Sunday the 26th. Go to [jacksonnh.com](http://jacksonnh.com) for details.

Your best  
resource  
for local  
books and  
so much  
more!



## White Birch Books

Celebrating  
**27**  
YEARS!

2568 Main St., No. Conway • 356-3200  
[www.whitebirchbooks.com](http://www.whitebirchbooks.com)



THE LUCIANO FAMILY SINCE 1967

# Merlino's Family Steakhouse

*Specializing in Chef's Signature Angus Beef*

*Taste the Difference!  
Great Kids' Menu!*

## 356-6006

[www.merlinossteakhouse.com](http://www.merlinossteakhouse.com)



**REWARDS  
&  
LOYALTY  
PROGRAM**  
Best Program  
in the Valley!  
Earn 10%  
Discount on  
EVERY  
VISIT!

*A small sampling of our menu includes:*

- Italian Specialties
- Fresh Maine Lobster & Seafood
- Prime Rib
- T-Bone Steak
- BBQ Baby Back Ribs
- Filet Mignon

**SPORTS FANS!!**

**5 Big Screen TVs in our Lounge.**

**Walk to Shopping and Hotels!**

**Sunday Brunch Menu 10am-2pm**

*Serving Lunch & Dinner from 11am Daily*  
Route 16, North Conway







Skiers and snowshoers crowded into the 1785 Inn in Intervale getting chocolate treats during Mount Washington Valley ski Touring Association's Chocolate Tour Sunday. (JAMIE GEMMITI PHOTO)

- Ice Bar: Stonehurst Manorchef, along with a team of ice carvers, will literally transform tons of ice into a full size outdoor bar, seating, outside the Library Lounge, Jan. 24 and 25. Go to [stonehurstmanor.com](http://stonehurstmanor.com) for details

- Vacation weeks: The last two weeks in February are school vacation weeks in New Hampshire and Massachusetts and local ski areas and businesses plan so many events for those weeks, you could

be busy every minute.

King Pine has overnight ski camps both weeks. Cranmore Resort is Cranapalooza family entertainment, famous s'mores and DJ dance parties in Schneider Square every day. Wildcat Ski Area will hold a torchlight parade on Feb. 15. All local ski resorts will have live music and entertainment every evening. See their individual websites for more information.



**Let us make a Bear Notch Believer out of you!**

## MEMORABLE TERRAIN

Located in the heart of the pristine upper Saco River Valley, Bear Notch Ski and Snowshoe Center offers spectacular views on meticulously groomed trails for all ability levels.

**Beginners** will enjoy a scenic and simple ski through our lower fields and out to the ever-changing Saco River with its breathtaking views up the Saco River Valley toward Crawford Notch.

**Intermediate and advanced skiers** will find ample challenges in the rolling terrain of our 10km village loop that connects skiers to hillier portions of the trail network, allowing for an extended ski. Well-behaved dogs are always welcome on our trails, where they can join you as you both enjoy the best snow in the valley.

## LESSONS & TOURS

*Reservations Requested*

**Our ski instructors know how to make your cross-country skiing experience informative and enjoyable.** First-timers and beginners: Our Learn to ski package (lesson, day pass & rental) is an affordable way to pick up the sport. *Bear Notch Ski Touring offers private on the trail instruction.*

## AFFORDABLE SKIING

**Adults:** \$20 per person

**Juniors (up to 16yrs old):** Free with paying adult

**Seniors (age 65 and over):** \$15 per person

Ask about **Frequent Skier Passes.**

**Rentals:** \$20 Adults; \$15 Juniors • \$10 Kids • Skate: \$22

**Tubbs Snowshoe Rentals:** \$20

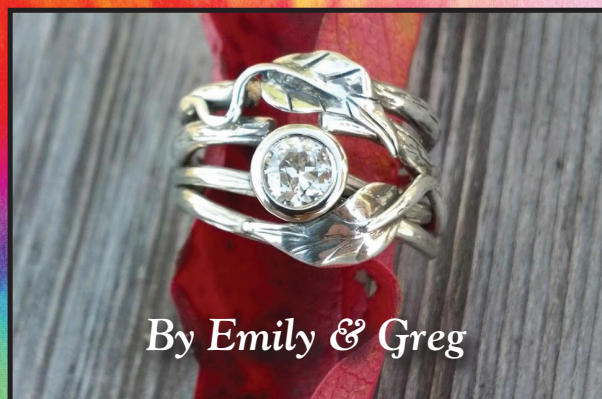
*Call Ahead for Early & Late Season Discounts!*

*Full line of skate demos also available*

**Reservations requested for lessons**  
**[www.bearnotchskitouring.com](http://www.bearnotchskitouring.com)**  
**for current conditions**

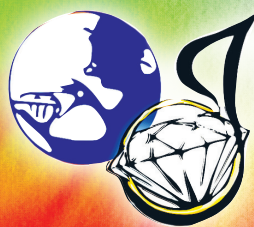
**Located 3.7 miles west of Attitash on Rte. 302**  
**603-374-2277 • [www.bearnotchskitouring.com](http://www.bearnotchskitouring.com)**  
**PO Box 20, Bartlett, NH 03812**

**UNIQUE PERSONAL  
CUSTOM DESIGNS**



*By Emily & Greg*

**FINEST AREA SELECTION OF DIAMONDS  
& PRECIOUS GEM CREATIONS. PLUS...  
HANDMADE, ANTIQUE AND ESTATE JEWELRY**



**North Country Fair  
JEWELERS**

2448 White Mountain Highway,  
North Conway, NH • 356-5819

*Celebrating Our 51st Year!*





# VISTA BEV & MARKET

*Specializing in  
Craft Beer & Wine*  
Kegs • Groceries • Gifts

**OPEN DAILY**  
Sun-Thur 8a-8p  
Fri & Sat 8a-9p

**603-356-5084**  
10 Hurricane Mountain Rd.  
Intervale, NH 03845

*The Hoppiest Beer Store in the Valley!*



Fat-tire bikers head up the Mt. Washington Auto Road for the Ski, Shoe and Fatbike to the Clouds competition in March 2019. (COURTESY PHOTO)

- The Mount Washington Valley Ski Touring Association's 31st annual Chocolate Festival. On Sunday, Feb. 23, cross-country skiers swell the trails in North Conway and Intervale to ski from inn to inn and sample the chocolates there. Go to <http://mwvskitouring.org/Chocolate-Festival.html> for details.

- Hannes Schneider Meister Cup Weekend: Held at at Cranmore Mountain Resort, March 13-15, and sponsored by the New England Ski Museum, the event includes a giant slalom race, uphill race, ski attire competition and ski history talks. Go to [cranmore.com](http://cranmore.com) or [newenglandskimuseum.org](http://newenglandskimuseum.org).

- The Red Parka Pub Challenge Cup Race: The 47th Red Parka Challenge Cup, March 20, a dual giant slalom race held at Attitash Mountain Resort, is notable for its challenging modified open giant slalom course and head-to-head competition. Go to [redparkapubchallengecup.com](http://redparkapubchallengecup.com) for more information.

Ski, Shoe and Fatbike to the Clouds: Known as North America's toughest 10k, this March 8 race travels up the Mt. Washington Auto Road with an average grade of over 12 percent. The race starts at 10 a.m. Go to [greatglentrails.com](http://greatglentrails.com) for more information.



The **HAYLOFT** features top local and international performers and educators. This beautiful restored barn with pristine acoustics brings music lovers and performers together, for what feels like a family gathering in their living room. A listening room, warm and intimate, it is a magical place to enjoy a concert or celebrate a milestone.



The **HAYLOFT** at Dragonfly Barn has been refurbished as an all-seasons performance and event facility and exhibits all the charm and architectural elegance of the farm experience. Full of natural light and wood, offering clear views of green farmland, groves of trees, and more often than not, a family of deer or wild turkeys.



The **HAYLOFT** is the ideal place for gathering your loved ones for weddings, anniversary, birthday celebrations, or to host a professional meeting. Temperature controlled for winter, spring, summer or fall, this year round venue is the perfect place for your next event.

## EVENTS:

### Sunday, January 19 Songwriter Showcase

Denny Breau, Bruce Marshall  
Feature Artist:  
Annie Clark

### Tuesday, February 11 Heather Pierson Musical Meditations

### Sunday, February 16 Songwriter Showcase

Denny Breau, Bruce Marshall  
Feature Artist:  
Bennet and Perkins

### Saturday, February 22 Davy Sturtevant

### Sunday, March 15 Songwriter Showcase

Denny Breau, Bruce Marshall  
Featured Artist:  
Candie Tremblay

### Sunday March 29 RUNA

### Sunday, April 5 Scott Cook

### Tuesday, April 14 Heather Pierson Musical Meditations

### Sunday, April 19 Songwriter Showcase

Denny Breau, Bruce Marshall  
Feature Artist:  
Rupert Wates

### Sunday, May 17 Songwriter Showcase

Denny Breau, Bruce Marshall  
Feature Artist:  
Davy Sturtevant

### Saturday, May 30 Heather Pierson Trio

### Saturday, June 6 Arthur Migliazza

### Tuesday, June 9 Heather Pierson Musical Meditations

### Saturday, June 20 Lissa Schneckenburger Duo

### Saturday, June 27 Sundae & Mr. Goessl

### Sunday, June 28 Steve Wood and Beth Fitchet Wood

### Sunday, July 12 Music Without Borders 14th Annual International Piano Festival

### Thursday, July 16 Curiosity and Courage: Inventing Sound Author, Quincy Whitney and The Hutchins Consort

### Saturday, July 18 The Hutchins Consort Performance

### Sunday, July 19 The Why's and Where's of Music The Hutchins Consort Children's Program

### Saturday, July 25 Heather Masse and Jed Wilson

### Saturday, August 1 Sorcha and Jo

### Tuesday, August 11 Heather Pierson Musical Meditations

### Saturday, August 15 Abbie Gardner

### Saturday, August 22 Vance Gilbert

### Saturday, August 29 House of Hamill

### Saturday, September 12 Primo Cubano



### Sunday, October 11 The Rough and Tumble

### Tuesday, October 13 Heather Pierson Musical Meditations

### Sunday, October 18 Songwriter Showcase Denny Breau, Bruce Marshall Feature Artist: To Be Announced

### Sunday, November 15 Songwriter Showcase Denny Breau, Bruce Marshall Feature Artist: To Be Announced

### Sunday, December 6 Songwriter Showcase Denny Breau, Bruce Marshall Feature Artist: Jonathan Sarty

### Tuesday, December 8 Heather Pierson Musical Meditations

## The HAYLOFT at Dragonfly Barn

95 Sanborns Grove Road, Bridgton, ME

For more information call: (207) 749-6160 or email: [events@dragonflybarnmaine.com](mailto:events@dragonflybarnmaine.com)

TICKETS ONLINE - [www.brownpapertickets.com](http://www.brownpapertickets.com)

HEATED VENUE / BYOB - COMPLIMENTARY REFRESHMENTS







*What's your adventure?*  
ANYTHING IS POSSIBLE

## It is said that winter is not a season, it is a celebration.

We couldn't agree more! We celebrate the cold, the snow, and the beauty of winter every day here in North Conway, New Hampshire, one of the Top 3 Best Ski Towns in North America. We invite our visitors to explore all that winter has to offer while making memories that will warm your heart.

  
**Mt Washington Valley NH**  
Anything is possible.

  
**New Hampshire**  
LIVE FREE  
VISITNH.GOV

**VisitMWV.com | 1-800-337-3563**

Skiing and Riding | Dog Sledding | Snowmobiling | Snowshoeing | Tubing | Zip Lining  
Ice Climbing | Sledding | Ice Skating | Snow Coach Rides | Hiking | Apres Ski Fun  
Superior Lodging and Dining | Tax-Free Shopping | Live Music and Theater





**OVER 70 STORES AND COUNTLESS STYLES.**

G.H. BASS & CO.  
EST. **Bass** 1876  
FACTORY OUTLET

*Eddie Bauer*  
EST. 1920

**KAY**  
JEWELERS  
— OUTLET —

 **kate spade**  
NEW YORK

 **TRAILS END**  
Sweets & Treats

There's no better way to share a day with friends gathered at Settlers Green. Indulge in tax-free shopping at more than 70 stores and restaurants of your favorite brands and flavors. Spend your entire day surrounded by mountain views and endless activities. Fashion, food, spas and art. See today's deals at [settlersgreen.com/save](http://settlersgreen.com/save).



White Mountain Hwy, North Conway, New Hampshire • [settlersgreen.com](http://settlersgreen.com) • 888-667-9636