

Winter Guide 2019

# NORTH CONWAY

## MAGAZINE



[CONWAYDAILYSUN.COM](http://CONWAYDAILYSUN.COM)



# COMFORTABLE WINTER TOURS TO TREELINE ON **MOUNT WASHINGTON**

Just 20 minutes north  
of North Conway

GreatGlenTrails.com  
603-466-3988

## *Mt. Washington* **SnowCoach**

Book your trip online!



**Great  
Glen Trails**

### **Visit the Extreme World Above Treeline!**

SnowCoach tours on the Mt. Washington Auto Road run daily, leaving from the Great Glen Trails base lodge



Scenic Trail System



Family Fun



Best Nordic Ski Shop



Cozy Base Lodge & Cafe

**Ski-In**



**Ski-Out**

Trailside Lodging at The Glen House Hotel — Dine at The Notch Grille

**45 KM of uncrowded, family-friendly trails at the base of Mount Washington**

**Cross Country Skiing • Snowshoeing • Snow Tubing • Winter Fat Biking • Nordic Ski Shop**





*Bretton Woods*

# BEST IN THE EAST FOR A REASON.

Discover why we've earned the distinction by *SKI* magazine of **#1 in the East for grooming for the fifth year**, and one of *Conde Nast Traveler's* **Top 25 Ski Resorts in North America**. Explore the state's largest ski area for cruisers, signature glades and powder stashes. After a day on the slopes, come inside and relax with **award-winning lodging and dining**.



## 2018-19 SEASON LONG DEALS

**2-4-1 WEDNESDAYS** Two adults ski or ride for \$85, or get two Nordic trail passes for \$21 during non-holiday periods.

**\$29 POWDER & PASTA** Ski or ride from 4pm-close and enjoy a pasta dinner Friday & Saturday nights, Dec. 28 - March 9, plus nightly during holiday periods. Or, get on the slopes starting at 2pm for \$53.

**\$60 NEXT DAY UPGRADE** Upgrade your Sunday-Thursday non-holiday ticket by 4pm and ski the next day for \$60.

**\$110 ZIP & SKI** Hit the slopes then soar above them on the Bretton Woods Canopy Tour.

Learn more at [brettonwoods.com/specials](http://brettonwoods.com/specials)

All specials valid through 2018-19 ski season and are subject to change without notice. May not be combined with other offers or promotions.

Route 302, Bretton Woods, New Hampshire  
800-258-0330 | [brettonwoods.com](http://brettonwoods.com)

OMNI  RESORTS  
mount washington  
new hampshire



# Welcome To North Conway

North Conway has been a destination for outdoor recreation enthusiasts for generations. In winter or summer, it's a great place to get out and enjoy nature and adventure, and then relax with an evening of entertainment.

In this edition of North Conway Magazine, you'll find our guide to local downhill and cross-country ski areas, with suggestions on how to find the right fit for your abilities and interests.

We also include the best of what the Mount Washington Valley



North Conway Village from Schouler Park. (JAMIE GEMMITI PHOTO)

has to offer this winter — both our picks for the best ways to enjoy the valley and top picks by local readers of our sister paper, The Conway Daily Sun.

We've got selections of trails for hiking, climbing, snowmobiling, biking and horseback and sleigh rides. In addition, we've included listings for local concerts and special events.

Whether you're here for the week or a day, we hope this guide will help you make your visit a memorable one. As you'll see, there's plenty to do.

— Terry Leavitt and Tom Eastman

**Betty Schneider's**  
**Scandinavian Baking**  
*Creatively Baking with Love & Butter Since 2007!*

**We Are Open All Year!!**

**Stop by, and enjoy homemade freshly baked goods!**

**Coffee & Tea are always on the house!**

- Cardamon Raisin Bread • Muffins
- Almond Cake • Cookies & More!

Open Tuesday through Saturday 7am-4pm;  
Closed Sunday & Monday

**603-323-2021 or 603-662-6047**  
**kbschneidernh@roadrunner.com**  
**www.scandinavianbakingnh.com**

**Route 113 East, Deer Hill Road, Chocorua**

**Good Things Come in Small Packages**

**See The Winnebago View And The Micro Minnie Trailer**

**Winnebago View**

- 24J & 24D in Stock
- LED Lights
- Powered Patio Awning
- Tankless Water Heater
- Roof Air With Heat Pump
- Electric Stabilizing Jacks
- Solar Roof Panels

**Micro Minnie Trailer**

- Easy towing <3,000lb dry weight
- Queen bed, dinette
- Full Bathroom
- Microwave, Range, Refrigerator
- Patio Awning
- Fiberglass Exterior

**HILL'S R.V.'S**  
738 Eastman Rd (Rte 302)  
North Conway, NH

**WINNEBAGO**

**Financing Available For Qualified Buyers!**  
Open year round, 6 days a week, closed Sunday  
1-888-HILLSRVS 603-356-4111  
www.hillsrvs.com

**Visit Hill's RVs, Mt. Washington Valley's Locally Owned, Award Winning RV Dealer.**



# Skiing Double



## 2 MOUNTAINS. 2 DAYS. 1 TICKET.

Attitash Mountain Resort and Wildcat Mountain – just 20 minutes apart in New Hampshire's White Mountains – offer something no other resorts in New England can: the opportunity to ski or ride at two mountains in the same day with one ticket, or over multiple days with a multi-day ticket. The hardest decision is which to ski first.

[2MOUNTAINS1TICKET.COM](http://2MOUNTAINS1TICKET.COM)



## SKIING



A skier catches big air . (JAMIE GEMMITI PHOTO)

# Ski areas For all occasions

Each of the valley's six local alpine ski areas has something unique to offer skiers and boarders, and sometimes non-skiing family members who are hoping for other options than hanging out in the base lodge with a good book. Your needs and desires may change from trip to trip depending on who's coming along and how you want to ski, and all these mountains are worth at least one visit. Whether you're looking for long smooth runs or steep glades, live apres-ski music or a nearby hot tub to help you recover, you can find something to fit.

If you are a beginner and looking for a lot of green circle trails to practice your basic skills, or have three kids going in four different directions, King Pine, Cranmore and Black Mountain are smaller mountains with plenty of beginner and intermediate trails, as well as glades and expert trails for when you are ready for a challenge.

Cranmore and King Pine both have graduated terrain parks, where skiers and boarders can start small and work their way up to big jumps, rails, boxes and other freestyle terrain, as do Attitash and Bretton Woods.

Although it's the smallest of the local mountains, King Pine, located in East Madison, offers a great variety of activities, both on and off the slopes at an affordable price, making it a great deal for anyone who wants other options to complement a day of downhill or a vacation-week stay. There are regular kids' and family ski races, a Winter Carnival and overnight camps during vacation week.

King Pine Ski Area is part of Purity Spring resort, that includes 20K cross-country ski and snowshoe trails, a tubing park and skating, all of which are covered by the cost of the day's ski ticket (or can be purchased  
see next page

## SKI AREA STATS



**Attitash Mountain Resort** in Bartlett has 11 lifts serving 68 trails on more than 300 acres, with about 45 percent intermediate and 28 percent each of novice or expert; along with 60 acres of glades and terrain parks for all ability levels. For more information and current conditions, go to [attitash.com](http://attitash.com) or call (603) 374-2368.



**Black Mountain** in Jackson has a vertical drop of 1,100 feet and five lifts serving 45 trails and glades (divided evenly between novice, intermediate and expert) on about 150 acres. For current conditions, go to [blackmt.com](http://blackmt.com) or call (603) 383-4490.



**Bretton Woods** ski area, part of Omni Mount Washington Resort located in Bretton Woods, has 1,500 feet of vertical drop and 10 lifts serving 62 trails (50 percent expert, 27 percent intermediate and 23 percent novice) on more than 450 acres. For current conditions and info, go to [brettonwoods.com](http://brettonwoods.com) or call (603) 278-3320.



**Cranmore Mountain Resort** in North Conway has a vertical drop of 1,200 feet, with nine lifts serving 56 trails and glades (44 percent intermediate and 28 percent each of expert and novice) on over 170 acres. Go to [cranmore.com](http://cranmore.com) or call (603) 356-5543.



**King Pine** in Madison has a vertical drop of 350 feet, with six lifts serving 17 trails and glades (44 percent novice, 31 percent intermediate and 25 percent expert) on 48 acres. For more information go to [kingpine.com](http://kingpine.com) or call (603) 367-8896.



**Wildcat Mountain** in Pinkham Notch has a vertical drop of more than 2,000 feet, with five lifts serving 48 trails (47 percent intermediate, 33 percent expert and 20 percent beginner), one terrain park, a terrain-based learning area and 80 acres of glades for a total of 225 skiable acres. For information, go to [ski-wildcat.com](http://ski-wildcat.com) or call (603) 466-3326.





**Boarding on powder conditions at Bretton Woods in November. (COURTESY PHOTO)**

from preceding page

separately for non-downhill skiers). The resort also has a fitness center with swimming pool, if you're looking for that hot tub.

Known for its learn-to-ski programs, Cranmore also has live music on the weekends and Cranapolooza family celebrations with s'mores, games and entertainment at the base of the mountain most Saturday and vacation week afternoons (and fireworks on select Saturdays).

If your tastes run to variety in the black diamond category of trails, Bretton Woods places the highest percentage of trails (50 percent) on the expert list. As the largest ski area in New Hampshire, with more than 450 acres of skiable terrain, Bretton Woods also has plenty of beginner trails (23 percent of terrain).

Like King Pine, Bretton Woods maintains its own cross-country trails (and you can trade in that alpine pass for a nordic center pass if you're done with the day's downhill). There are also fat-tire bike trails, tubing and sleigh rides, snowmobiling, dog sledding, an indoor climbing wall and a three-hour zipline canopy tour.

Wildcat and Attitash offer considerable expert terrain. Both are owned by Peak Resorts, and a ticket for one mountain is good at the other, with a combined acreage and variety comparable to Bretton Woods' alpine trails. If skiing among the trees is your thing, and all three now sport large acreages devoted to glade skiing, with 125 acres of glades at Bretton Woods, 80 acres at Wildcat and 60 at Attitash.

Black has also opened new glades and backcountry terrain, and in partnership with Ski the Whites, last year added a backcountry skiing and snowboarding program with skiing and snowboarding lessons and rentals from its base lodge and Friday Night Lights, an uphill weekly ski touring and racing program.

Weekend slopestyle, mogul jam and skier/boarder cross competitions at Attitash make for good spectator viewing.

All of the mountains try to offer complementary activities, whether it be a mountain coaster (Cranmore), tubing (King Pine, Cranmore, Bretton Woods and Great Glen), races and competitions, celebrations on snow and special events. All have live music on Saturdays and vacation weeks.

## EARN YOUR TURNS

The latest trend in downhill skiing is going uphill.

Black Mountain last year partnered with backcountry skiing outfitter Ski the Whites to create an uphill ski program, encouraging skiers to bring their skins and freeheel skis to the groomed slopes of the Jackson ski area. Lessons are also available for backcountry skiing and snowboarding, and the program makes use of the areas expanded glades and backcountry terrain.

Black also offers the Ski the Whites' Friday Night Lights program, giving uphill skiers the chance to practice their sport in a community, with a weekly ski touring and racing program followed by social gatherings at Black's Lostbo Pub.

Andrew Drummond, owner of Ski the Whites, said the program was a success and he expects to bring it back with this year's 10-week series starting on the first Friday in January.

Most ski areas have made some accommodations for uphill skiers, though they may limit uphill travel to specific trails or times. Black, Cranmore, Bretton Woods and Wildcat offer day tickets. Black and Cranmore also offer uphill season's passes. King Pine allows access to nordic and alpine ticket and season pass holders. Uphill travel is not permitted at Attitash.



**Skiers at the start of Black Mountain's Friday Night Lights uphill racing and touring series in 2018. (COURTESY PHOTO)**



# Snow report

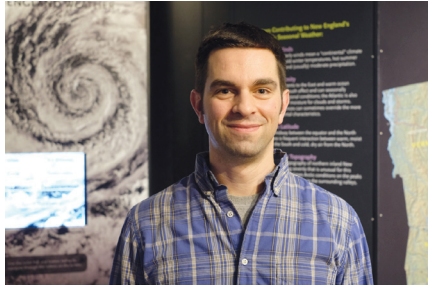
## Record start to winter

Without respect for a calendar that places the start of winter at Dec. 21, the snow season descended on the regions peaks and valleys in October. Record snowfall was recorded in November and it has stayed cold enough to keep that snow in place and allow for snowmaking at ski areas, many of which also broke records with early openings.

What's behind the wacky weather patterns — this year's late foliage season and early snow?

Dr. Eric Kelsey, director of research for the non-profit Mount Washington Observatory, says the above average precipitation for October and November "is what we would expect in a warming climate."

Frank Carus, head snow ranger for the U.S. Forest



Mount Washington Observatory's director of research Eric Kelsey. (JAMIE GEMMITI PHOTO)

Service's Mount Washington Avalanche Center, agreed and said, "It's important to know that a warmer and wetter future can also mean a lot more snow and still be below freezing — so a warmer climate can make for a more volatile atmosphere. So, basically we can have easily bigger storms with more precipitation: The equivalent of all these hurricanes and big rainstorms of the fall can happen in winter and drop a whole lot of snow on us."

And what can we expect for the rest of this season?

Kelsey said the jury is still out, but boding well for cold and snow in the Northeast, he said, "is how the troposphere and stratosphere are interacting — there are certain types of wave patterns that will favor the colder, snowier winters." Keep your ski tips crossed ...

# SEA DOG BREWING CO.



**AWARD-WINNING CRAFT BEER  
& CREATIVE PUB FARE!**

In North Conway  
Serving lunch, dinner,  
late night & kid's menu too!  
**1976 White Mountain Hwy**  
**North Conway, NH**  
**(603) 356-0590**

-----  
Located in the Big Red Barn.  
You'll find ample parking in rear lot.





[seadogbrewing.com](http://seadogbrewing.com)

<b>Happy Hour</b> Daily 3-6pm	<b>Late Night Menu Every Night</b>	<b>Monday: Mug Club Specials</b>	<b>Tuesday: Karaoke</b>	<b>Friday &amp; Saturday: Live Music</b>	<b>Sunday 10-2: Brunch</b>
----------------------------------	------------------------------------	----------------------------------	-------------------------	--	----------------------------





**COOKING**

# Liquid gold

## ‘A taste to excite your imagination’

What if there was a way to take your cooking up a level or two and add some health benefits to the way you cook at the same time?

Welcome to the world of ultra pure premium olive oils and balsamic vinegars. The North Conway Olive Oil Co., located in downtown North Conway and in Settlers Green, has over 80 varieties of some of the freshest olive oils and balsamic vinegars in the world.

In the shop is a tasting bar where you can sample all the flavors before you buy, as well as receive suggested pairings for any dish you can imagine.

How about a spicy Baklouti green chile olive oil paired with a mango balsamic for a fish taco or mango salsa? Just the right amount of heat and sweet! A Tuscan herb olive oil and an 18-year-old balsamic creates an unbelievable dipping oil for bread. Another great idea is an espresso balsamic to marinate your steak tips or meat. Just stop in and let the friendly staff suggest something for you. They prom-

ise you will be blown away by the taste and freshness.

North Conway Olive Oil Co. olive oils are ranked 95-98 out of 100, some being crushed just over a month ago, and containing high levels of Polyphenols, an antioxidant in olive oil that research has shown to reduce blood pressure, lower cholesterol and have cancer-reducing abilities. There is also research indicating it helps with Alzheimers. North Conway Olive Oil is also only one of a handful of olive oil stores in the United States with the designation of ultra premium olive oil. This standard exceeds world standards for olive oil quality.

The store's balsamic vinegars are also the highest quality and are aged from 12-25 years. All are from Modena, Italy, and contain no added sugars, preservatives or salts and all of the store's products are non-GMO and gluten-free.

At North Conway Olive Oil Co., you'll find "a taste to excite your imagination."

**A TASTE TO EXCITE  
THE IMAGINATION**



**TAKE COOKING TO  
A WHOLE NEW LEVEL**





**Over 80 different Olive Oils and Balsamic Vinegars. Non-GMO, gluten-free, and no preservatives or added sugar**

**Settlers Green Unit D46, North Conway, 603-730-5515 (next to WM Cupcakery)  
2730 White Mtn. Hwy., North Conway, NH 603-307-1066  
[www.ncoliveoil.com](http://www.ncoliveoil.com)**





## Peach's Restaurant



tripadvisor®

[www.PeachesNorthConway.com](http://www.PeachesNorthConway.com)

### Wonderful Breakfast

My wife and I went here for breakfast during our trip to North Conway. We liked it so much we went back a second time later in the week. The menu is very extensive and reasonably priced. The service was excellent and on par with the delicious meals.

*Date of visit:*  
*December 2018*  
*John M*

**Homemade Muffins.**

**Desserts. Soups.**

**Daily Specials.**

**North Conway Village • 356-5860**  
**Open at 8am Mon.-Fri. 7am Sat. & Sun.**  
**Closed Tues.**



### GAUGING THE WEATHER

Mount Washington Observatory, a private, nonprofit institution, maintains a weather station on the summit of Mount Washington, performing weather and climate research, and provides daily weather forecast for the mountains, essential information for hikers, skier and others to plan their backcountry trips. Find the higher summit forecast on the Observatory's website, [mount-washington.org](http://mount-washington.org), or at [tinyurl.com/highersummitsforecast](http://tinyurl.com/highersummitsforecast).

## COME TAKE A LOOK-SEE!

### Tuckerman's RESTAURANT & TAVERN

Serving 4PM - 9PM Sunday thru Thursday  
4PM - 10PM Friday and Saturday



Appetizers • Soups • Salads • Steaks • Seafood  
Desserts • Daily Specials • Family Friendly  
Take-out Available

### The New England Inn & Lodge

A Mount Washington Valley landmark in hospitality

**Non-smoking Family friendly & Couples lodging  
some with Jacuzzis**

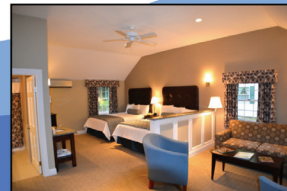
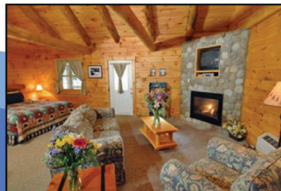
**Rooms, Suites, Cottages and Cabins**

**Group rates available!**

**Complimentary Continental Breakfast**

**Close to Attitash, Bretton Woods, Cranmore, Cross  
Country Ski trails, tax free shopping and more!**

**Indoor Heated Pool**



[TuckermansTavern.com](http://TuckermansTavern.com) 603-356-5541 [NewEnglandInn.com](http://NewEnglandInn.com)

336 NH Rte 16A "The Intervale Resort Loop", Intervale, NH 03845



ALWAYS OPEN, ALWAYS FUN!

# YOUR MAINE ESCAPE AWAITS!

Maine's home for wicked good fun, with 24/7 casino action and our convenient hotel and pub!



[OxfordCasino.com](http://OxfordCasino.com)

Experience round-the-clock casino excitement on our expanded gaming floor, including nearly 1,000 slot machines and 30 table games! With a new hotel featuring over 100 rooms and a new pub-style restaurant offering the best in Maine and New England cuisine, we're building excitement every day!

*Oxford Casino Hotel is just minutes from the Maine Turnpike on Route 26!*



Persons under 21 years of age may not enter the gaming area unless licensed as employees. Gambling problem? In Maine, call 2-1-1 or (800) 522-4700 for help.



# What's new Alpine ski areas

by Tom Eastman

The state's ski areas are often hard at work during snowless months, renovating facilities, adding snowmaking capabilities and continued maintenance to keep the complex machinery of ski lifts and other systems operating at top capacity.

Much of the work they do easily goes unnoticed by visitors, but year by year, improves conditions on the slopes and the overall experience of skiers and snowboarders at the resorts.



**The new gondola takes shape at Bretton Woods as the first snow of the season falls in October. The eight-person gondola will have an uphill speed of more than 13 mph for a ride time will be 4.9 minutes. (COURTESY PHOTO)**

## Bretton Woods adds gondola

Among the most noticeable changes at the valley's many ski areas over the summer and fall is the new gondola being installed at Bretton Woods.

The ski area is installing New Hampshire's first eight-person gondola, which will have 36 cabins, each carrying eight passengers. It's estimated the 6,000-foot gondola trip will take about five minutes. The new gondola will bring the total number of lifts at Bretton Woods to 10, including four quad chairlifts, a triple chair, a T-bar, Wonder Carpet, Magic Carpet and the Learning Center Quad.

Bretton Woods also has distinction of being named "Best Grooming in the East" by Ski Magazine for the past five years.

## Black focuses on uphill

Black Mountain, the oldest ski area in the Mount Washington Valley, opening in 1935, is still keeping up on the latest trends in skiing.

Black this year will continue a focus on uphill skiing, which saw the mountain last year add a back-country skiing and snowboarding program with lessons and rentals from their base lodge, and the Ski the Whites' Friday Night Lights weekly uphill ski touring and racing program, followed by social gatherings at Black's Lostbo Pub.

Black also opened new glades and back-country terrain, and Granite Back-country Alliance, a

non-profit that works to open up and maintain backcountry ski terrain, helped with trail maintenance to prune and manicure the glades.

## Attitash, Wildcat, Cranmore upgrade snowmaking

Other local areas have been focusing their energies on snowmaking, grooming and lift systems.

Attitash in Bartlett and Wildcat Mountain in Pinkham Notch, both owned by Peak Resorts, spent the summer performing routine maintenance and upgrading parts of our snowmaking system.

Projects included cleaning and rebuilding each of the pumps in Attitash's pump houses, which will bring them to 100 percent efficiency. Two larger pumps were installed on the Lower Attitash system. All five valve houses were completely rebuilt and now have winterized housing to protect them. Each project shares the goal of maximizing efficiency, which reduces startup time and allows Attitash's teams to move water to different trails to get them covered in snow.

"In short, we'll be able to make more snow in a shorter

see next page



from preceding page

time frame,” said Attitash/Wildcat Marketing Director Jack Fagone.

In Attitash lift maintenance projects, the gearbox for the Flying Bear Lift was rebuilt. The summit triple now has a new drive control board, field supply module, blower motor and a completely rebuilt electric motor.

Both resorts have added new snow cats to its fleet of grooming vehicles: Attitash is getting a Prinoth Bison S, while Wildcat is adding a PistenBully 400. Wildcat also repaired the pedestrian bridge that provides access to the base area from the base lodge.

Snowmaking continues to be enhanced at Cranmore as well.

“Since 2010 (when the Fairbank Group purchased the resort), we have added 500 energy efficient snow guns to our inventory, and have upgraded pipeline to increase water capacity on the mountain, and direct water in a more efficient capacity,” Cranmore Marketing Director Becca Deschenes said.



Wildcat Mountain's snowmaking piles in October. (COURTESY PHOTO)

Deschenes said Cranmore is also offering guests the opportunity to save time and money by reserving rental equipment in advance online.

### King Pine upgrades infrastructure

King Pine Ski Area in East Madison spent the summer upgrading its lift infrastructure, including a \$35,000 purchase and installation of catwalks and lifting arms as well as replacing seals and bearings on bull wheels.

It also spent over \$40,000 to update and add to its ski, snowboard, Nordic, snowshoe and ice-skating rental fleet, and recently updated its maintenance building by installing efficient, low-energy lighting.

For new ski school programs, King Pine is building upon its popular and affordable children's "Knee-Hi" ski programs and is introducing a similar one for kids age 4-7 who want to learn and develop snowboarding skills.

For kids at heart, King Pine is introducing an affordable Tuesday Seniors Development Program that will run for four weeks in January.

**ROSSIGNOL** 

 **salomon**

 **BLIZZARD**  
S K I

**ATOMIC** 

 **DEMO  
THE  
WHITE  
MTNS**

520 Route 302, Bartlett, NH // [AndesSkiShop.com](http://AndesSkiShop.com)

**Only  
The Best  
From Mexico**

**SIZZLIN' FAJITAS** **FROZEN MARGARITAS**



**"Every Time We Come To The  
Valley This Is Our First Stop!"**

**This ain't no chain food!**

**WINTER HOURS: MON-THURS 4:30-9PM  
FRI-SUN 11:30AM-9PM  
[WWW.CAFENOCH.NET](http://WWW.CAFENOCH.NET)**

**FULL LIQUOR  
CHILDREN'S MENU  
TAKE-OUT**

**147 MAIN ST., CONWAY  
447-5050**

  
Best Mexican Restaurant





## SKIING



A skier brings a dog along on a Bear Notch Ski Touring trail. All of Bear Notch's trails are open to skiers with dogs. (JAMIE GEMMITI PHOTO)

# Cross-country Not just about skiing

by Sally McMurdo

Once upon a time, cross-country ski centers were just about cross-country skiing. They might have grooming or not. Trails that were narrow and untracked, “groomed” by the skier in front. Then some Nordic centers began grooming trails with snowmobiles and contraptions resembling bedsprings.

Trails were single or double-tracked for two-way traffic, but no “skate lanes” existed then. With the advent of skate skiing in the 1980s, centers widened some trails and groomed them for both classic and skate skiing.

In the past decade, many cross-country centers added snowshoeing as technical advances in snowshoes made them easier to put on and use. Initially, snowshoers used the same groomed trails, but then centers added “snowshoe specific” trails that made outings more fun. Soon, dog lovers asked if they could bring Fido, too, when they went skiing and snowshoeing. Each center had to develop its “dog” policies — whether to allow them or not and where. Some centers added snow tubing to expand their offerings and attract families.

The latest addition that some Nordic centers are

offering is “fat biking.” Fat bikes are large frame mountain bikes with tires wider than 3 ½ inches. The tires are run with low pressure, making for little damage to the trail and lots of fun for the year-round rider.

The Mount Washington Valley has seven Nordic centers: Bear Notch Ski Touring Center, Bretton Woods Nordic Center, Great Glen Trails Outdoor Center, Jackson Ski Touring Foundation, Purity Springs Cross-Country and Snowshoe Reserve; Mount Washington Valley Ski Touring and Snowshoe Center and Trails in the Wood. Ski and snowshoe rentals are available at all but Trails in the Wood.

Each is unique in its offerings. All now have cross-country skiing and snowshoeing. Dogs are allowed to some extent at each, and fat bikes are continuing to make inroads. At some areas, you’ll also find snow tubing, ice skating or sleigh rides. One (Great Glen) has a snowcoach ride halfway up Mount Washington and one has a biathlon range (Jackson). There’s even one with a Nordic lift-served option to access high country alpine trails (Bretton Woods). It’s not just about skiing anymore.

## TOURING CENTER BASICS



**Bear Notch Ski Touring:** 70 km — 60 km track- and skate-groomed, backcountry trails in the Yates Farm area. Additional multiple-use trails shared with snowshoers in the Bartlett Experimental Forest area. Snowshoers share trails. Dogs allowed throughout the system.

Route 302, Bartlett; (603) 374-2277; [bearnotchskitouring.com](http://bearnotchskitouring.com)



**Bretton Woods Nordic Center:** 100 km — 95 km track-groomed, 90K skate-groomed, 5K backcountry, and a lift-served Nordic High Country area. Snowshoers share trails; guided snowshoe expeditions daily. Lift-served access to high-country snowshoeing. Fat biking: On the Deception and Fabyan's Fields Trail Network.

Route 302 (603) 278-3322; [brettonwoods.com](http://brettonwoods.com).



**Great Glen Trails:** 45 km — 25 km skate- and track-groomed, 20K backcountry, 2K snowmaking. Snowshoers share trails. Ski with a naturalist tours and starlit tours available some weekends (reservations recommended). Ski and snowshoe rentals available. Fat bikes: Open to fat bikes daily, afternoons only, conditions permitting. Dogs welcome on Aqueduct Loop only, on leash.

Route 16, Pinkham Notch (603) 466-2333; [GreatGlenTrails.com](http://GreatGlenTrails.com)



**Jackson Ski Touring:** 154 km — 93 km track-groomed, 88K skate-groomed, 61K backcountry. Snowshoeing beside ski trails or on 45K of snowshoe-specific trails, two-hour guided snowshoe tours on weekends and vacation weeks. Ski and snowshoe rentals available. Dogs: 15K dog-friendly trails in Prospect Farm area at the end of Carter Notch Road and in Jackson Village: Covered Bridge, Kissing Bridge and Gray's Inn Cut-off Trails.

Main Street, Jackson (603) 383-9355; [jacksonxc.org](http://jacksonxc.org)



**Mount Washington Valley Ski Touring:** 65 km — 45 km track- and skate- groomed, 20K backcountry. Snowshoers share trails. Saturday guided tours at 1 p.m. Ski and snowshoe rentals available. Fat bikes allowed on designated bike trail and on ungroomed trails in Whitaker Woods. Dogs allowed in Whitaker Woods only.

Ragged Mountain Equipment, Route 16, Intervale (603-356-9920; [mwvskitouring.org](http://mwvskitouring.org))



**Purity Springs:** 28 km — 15 km track- and skate-groomed, 13K backcountry. Snowshoe on cross-country trails and backcountry trails, tours Wednesdays, 1 p.m., and Saturdays, 2 p.m. Ski and snowshoe rentals available. Dogs allowed on weekdays, but not on weekends or vacation weeks.

Route 153, East Madison: (603) 367-8896; [kingpine.com](http://kingpine.com)



**Trails in the Wood:** 10 km system developed for education and recreation. The trails were designed for walking, cross-country skiing, snowshoeing, mountain biking, maple sugaring, and nature observation. Open from 9 a.m.-4 p.m. or whenever the gate is open.

Route 16, Intervale; (603) 356-9980; [believeinbooks.org](http://believeinbooks.org).



**Let us make a Bear Notch Believer out of you!**

## MEMORABLE TERRAIN

**Located in the heart of the pristine upper Saco River Valley, Bear Notch Ski and Snowshoe Center offers meticulously groomed trails for all ability levels.**

**Beginners** can enjoy a scenic and simple ski through our lower fields and out to the ever-changing Saco River with its breathtaking views up the Saco River Valley toward Crawford Notch. **Intermediate and advanced skiers** will find ample challenges in the rolling terrain of our 10km village loop that connects them to hillier portions of the trail network, allowing for an extended ski. Well-behaved dogs are always welcome on our trails, where they can join you as you both enjoy the best snow in the valley.

## LESSONS & TOURS

*Reservations Requested*

**Our ski instructors know how to make your cross-country skiing experience informative and enjoyable.**

**First-timers and beginners:** Our Learn to ski package (lesson, day pass & rental) is an affordable way to pick up the sport.

*Bear Notch Ski Touring offers private on the trail instruction.*

## AFFORDABLE SKIING

**Adults:** \$20 per person

**Juniors (up to 16yrs old):** Free with paying adult

**Seniors (age 65 and over):** \$15 per person

Ask about Frequent Skier Passes.

**Rentals:** \$18 Adults; \$12 Junior • Skate: \$20

**Tubbs Snowshoe Rentals:** \$20

*Call Ahead for Early & Late Season Discounts!*

*Full line of skate demos also available*

**Reservations requested for lessons**  
**[www.bearnotchskitouring.com](http://www.bearnotchskitouring.com)**  
**for current conditions**

**Located 3.7 miles west of Attitash on Rte. 302**  
**603-374-2277 • [www.bearnotchskitouring.com](http://www.bearnotchskitouring.com)**  
**PO Box 20, Bartlett, NH 03812**



## SKIING

# What's new Nordic ski areas

by Tom Eastman

Mount Washington Valley's ski touring centers have been beefing up trails, snowmaking and grooming as well as tours and amenities over the past few months. All offer beautiful, scenic terrain, lessons, equipment and rentals.

### Bear Notch Ski Touring

Owned and operated by the Garland family, Bear Notch offers 70 kilometers of skiing. Laid-back and friendly, the full-service cross-country ski and snowshoe center has homemade bread and soups daily.

Bear Notch Ski Touring has been working on trail improvements to allow the trails to hold the snow in minimal snow — though as veteran ski tourers well know, Bear Notch is usually a snow belt, with skiing last year well into late April.

### Bretton Woods Nordic Center

New last year at Bretton Woods is a warming cabin on the Porcupine Lane Trail in the Ammonoosuc Nordic Trail System. The 12-by-16-foot log cabin has room for a dozen Nordic skiers or snowshoers in nearly 200 square feet of interior space arrayed with couches and heated by a small gas stove. A covered porch provides views of the snow-covered Presidential Mountain Range and attendants will be available to serve steaming drinks and snacks during select periods.

### Great Glen Trails

The biggest news in what's new at cross country ski areas this year is the new Glen House Hotel added at Great Glen Trails at the base of the Mount Washington Auto Road.

The Glen House Hotel opened in mid-September and now provides trailside lodging at Great Glen Trails. The eco-friendly hotel offers 68 rooms facing mountains on both sides and includes an indoor pool, the Notch Grille restaurant and a full bar.



**Judith Reardon and Peter Smart of Chocorua and their dogs enjoyed the last bit of spring skiing at Bear Notch Ski Touring and Snowshoe Center in Bartlett on April 21. The ski touring center has been focusing on trail improvements to help trails hold the snow. (TOM EASTMAN PHOTO)**

"We invite everyone to come stay with us and ski right from our door," said Howie Wemyss, general manager of Great Glen Trails. Call (603) 466-3420 or go to [theglenhouse.com](http://theglenhouse.com) for more information about the Glen House.

This year marks Great Glen Trails' 25th anniversary season.

Great Glen Trails has invested over \$300,000 on a new PistenBully 400 groomer set up specifically for Nordic grooming.

### Jackson Ski Touring

Starting in the heart of picturesque Jackson Village, the 154-kilometer Jackson Ski Touring Center is the largest in

the Northeast.

Jackson has invested in the 2019 ski season and beyond with the purchase of a new PistenBully groomer to upgrade the grooming fleet. In addition, Jackson has acquired a tractor and attachment, according to Executive Director Ellen Chandler.

Chandler also said Jackson will be bringing back its popular Potluck Club Suppers on occasional Saturdays, and on Monday afternoons throughout the season beginning in January, simple time trials will be held on the trails adjacent to the touring center.

### Mount Washington Valley Ski Touring

The non-profit Mount Washington Valley Ski Touring and Snowshoe Foundation has been working on the Lower Perimeter in Whitaker Woods to smooth out the trails. Further work is planned for the Lucy and Wellinghurst trails.

### Purity Spring Resort

Purity Spring Resort updated its Nordic, snowshoe and ice-skating rental stock, as well as its downhill equipment for King Pine Ski Area.

For more information, go to [skinh.com](http://skinh.com) or the Mt. Washington Valley Chamber of Commerce at (603) 356-5701 ([mtwashingtonvalley.org](http://mtwashingtonvalley.org)).



## CRANMORE MAKES WINTER, IN A WORD, WONDERFUL.

### WHAT YOU'LL FIND HERE:

Skiing and riding for all ability levels  
KidsRule Mountain Camps  
NH's Best Snow Tubing  
Mountain Coaster, Giant Swing & Zip Line  
Night Skiing, family events, and activities

**CRANMORE. MADE FOR WINTER.**



North Conway, NH  
[cranmore.com](http://cranmore.com) • 1-800-SUN-N-SKI



## SKIING

# What's new Backcountry Skiing

CONWAY — The popularity of backcountry skiing has surged in recent years, and more and more people are searching the White Mountains for untracked powder each winter.

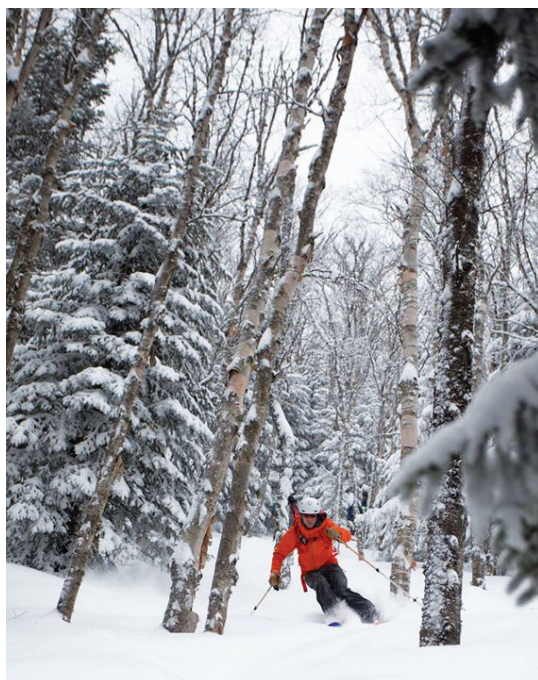
The Granite Backcountry Alliance, a local non-profit was formed in 2016 to promote the sport across in New Hampshire and Western Maine.

The group has been focusing on rehabilitation of old Civilian Conservation Corps ski trails and the creation of new backcountry skiing areas as well as supporting human-powered recreation and conservation efforts, winter education and avalanche/safety programs and to raising awareness of winter management issues.

GBA volunteers have worked on the John Sherburne Ski Trail and Gulf of Slides Ski Trail on Mount Washington The Doublehead Ski Trail in Jackson and the Maple Villa Ski Glade in Intervale.

Upcoming events include the Otto Rhode Memorial Backcountry Ski Race on Jan. 26 at the Mt. Washington Auto Road.

The group will hold its second annual Mount Washington Backcountry Ski Festival for March 8-10. The event includes full-day courses with experienced guides leading skiers in sessions geared for different interests and skill levels. Participants can also ski on their own and demo the latest gear. For more information, go to [granitebc.org](http://granitebc.org).



Tyler Ray, who heads the Granite Backcountry Alliance, skis the trees in the White Mountain National Forest (ANDREW DRUMMOND PHOTO)

*Come see us at...*

## NAIL CARE

356-2472 • 1857 White Mtn. Hwy., North Conway  
at Willow Commons



**\$5 OFF**

*any service*

**\$30 or more\***

*with this coupon.*

*\*not to be combined with any other coupon, offer or discount.*



*Priscilla's*  
Breakfast & Lunch

**EARLY RISER  
SPECIALS**

Monday-Friday  
6:00am – 8:00am

**“Welcome Home”**

**“It's not just about the food, it's the experience.”**  
**OPEN EVERY DAY AT 6AM**

[www.PriscillasNH.com](http://www.PriscillasNH.com)

**Open Daily 6am–2pm • (603) 356-0401**  
**2541 White Mtn. Hwy.**

*in the TD Bank Parking Lot, just a  
3 minute walk from the train station*



## SKIING ON MOUNT WASHINGTON

The Mt. Washington Cog Railway has decided to keep the Marshfield Base Station open for food and hot and cold drinks, on winter holidays and weekends, this winter.

For most recreationists, the most significant change is that a winter land use permit fee of \$10 a day and \$100 a season will be collected instead of a vehicle parking fee.

The Cog Railway owns 39 acres of land plus its 99-foot-wide corridor from base to peak and plows the Base Road from the Four Corners intersection to the parking lots.

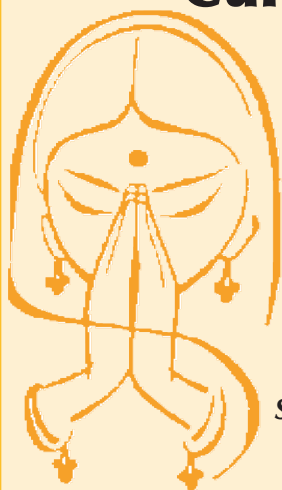
Cog president Wayne Presby of Littleton says the land use fee will be used to preserve, promote, maintain, improve



A backcountry skier on Mount Washington. (COURTESY PHOTO)

and protect the property to facilitate its use for recreational purposes and keep the Marshfield Station facilities and parking open during the winter and summer seasons.

## Shalimar Authentic Indian Cuisine



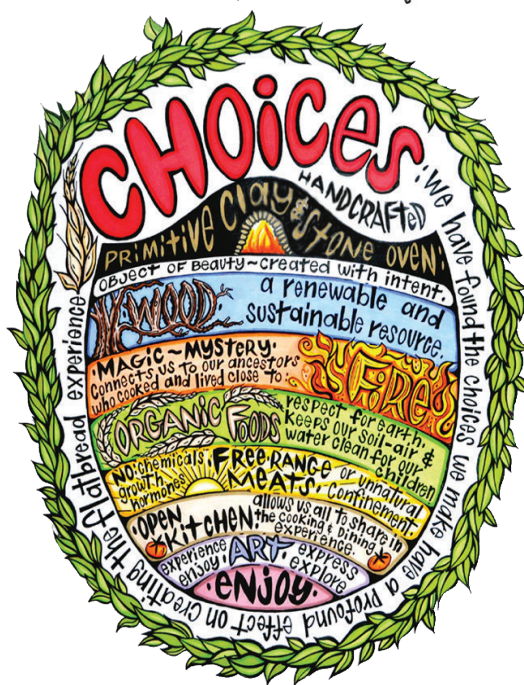
Vegetarian &  
Non-  
Vegetarian  
Dishes  
Flavorfully  
mild,  
spiced upon  
request

Serving Lunch  
and Dinner



Rte 16, North Conway • 356-0123  
[www.shalimarofindianh.com](http://www.shalimarofindianh.com)

**flatbread Company**  
All Natural, wood-fired, clay oven pizza



### ~ORGANIC SALADS~

NO BOUNDARIES SALAD  
add Veggies - Cheeses - Meat

### ~THE FLATBREADS~

Cheese & Herb Homemade Sausage  
Punctuated Equilibrium  
Mopsy's Kalua Pie  
Harvest Flatbread  
Pepperoni & Mushroom  
Jay's Heart  
Happy Valley Community Flatbread  
NO BOUNDARIES FLATBREAD  
add Veggies - Cheeses - Meat

### ~DESSERTS~

Barbara's Homemade Brownie Sundae  
Barbara's Gingerbread Sundae  
Whoopie Pie Sundae

Gluten-free Pizza and Desserts Available

(603) 356-4470  
At the Eastern Slope Inn, N. Conway



## AWARD WINNERS

# Don't miss out Best of the Valley

The Conway Daily Sun polled its readers to find out their choices for the second annual Best of Mount Washington Valley. More than 4,500 votes were cast in categories of professional services, recreation, health and beauty, culture and community, adult beverages and bars, and food and dining. The winners were unveiled May 22 at the awards party at the North Conway Country Club.

With 100 categories, they tried to pin down the top choices in everything from local band to burger to hiking trail. Tapping that font of knowledge, we bring you a selection of the winners to help you plan your stay. The complete list of winners and runners up can be found at [conway-dailysun.com](http://conway-dailysun.com).



Dan Tetreault (right) and Mary Bastoni star in M&D Playhouse's production of "Sweeney Todd: The Demon Barber of Fleet Street," which opened Thursday, June 21, in North Conway. (ASHLEY KERR PHOTO)

## CULTURE & COMMUNITY

### Best Art Gallery

#### League of NH Craftsmen

The League shop showcases juried craftspeople from around the state.

2526 White Mountain Highway, North Conway, NH • (603) 356-2441

### Best Local Theater Company

#### M&D Productions:

Award-winning year-round community theater, shows range from light comedies to challenging drama staged in an intimate space.

1857 White Mountain Highway, North Conway, NH • (603) 733-5275.

### Best Musical Series

#### Stone Mountain Arts Center

Up-close and personal performances by national acts in a beautiful timber frame music hall.

695 Dugway Road, Brownfield, Maine • [stonemountainartscenter.com](http://stonemountainartscenter.com) • (207) 935-7292.



Riley Parkhurst (COURTESY PHOTO)

### Best Solo or Duo Performance

#### Riley Parkhurst Project:

A musician/vocalist based in Conway, Riley performs as a solo act and as lead singer/guitarist of The Riley Parkhurst Project.

(603) 986-5193 • [rileyparkhurst.com](http://rileyparkhurst.com)

### Best Local Band

#### Shark Martin

North Conway rock band: Ryan St.Onge, Shawn Nadeau, Daniel Spoffard and Rafe Matregrano plays covers and original music. Performs regionally and local bars and festivals.

[sharkmartin.com](http://sharkmartin.com)

### Best Venue To Go Dancing

#### McGrath's Tavern

A family-owned Irish pub and restaurant in North Conway that has live music on Thursday nights. Also won for best place for live music.

3465 White Mountain Highway, North Conway • [mcgrathstavernnh.com](http://mcgrathstavernnh.com) • (603) 733-5955.

### Best Tattoo Artist

#### Darling Grey Tattoo & Gallery

Artists Jess Guercia and Emma Eichner are the owners of this tattoo studio located right in North Conway village

25 Seavey Street, North Conway • (603) 730-5754.



**AWARD WINNERS**  
 Skiers in the woods at Jackson Ski Touring Center, voted Best Cross-Country Ski Area. (JAMIE GEMMITI PHOTO)

## RECREATION

### Best Cross-Country Ski Area

#### Jackson Ski Touring

The 154 kilometers of trails in Jackson have plenty of track- and skate-groomed trails, backcountry and snowshoe options.

Main Street, Jackson • (603) 383-9355 • [jacksonxc.org](http://jacksonxc.org).

### Best Downhill Ski Trail Wildcat Trail

One of the longest trails at Wildcat Mountain, built by the Civilian Conservation Corps — a classic New England ski trail. Located in Pinkham Notch, Wildcat has spectacular views of the Presidential Range.

542 NH-16, Gorham • [skiwildcat.com](http://skiwildcat.com) • (603) 466-3326.



A skier pauses near the top of the Wildcat Trail before taking his run. (JAMIE GEMMITI PHOTO)



The Mount Washington Valley Children's Museum has interactive play spaces with a variety of themes. (JAMIE GEMMITI PHOTO)

### Best Place To Take Kids On A Rainy Day

#### MWV Children's Museum

Interactive play spaces, designed for children up to 7 years old.

2936 White Mountain Highway, North Conway, NH • (603) 356-2992.

### Best Bike Trail

#### Fryeburg Rail Trail

Also known as the Mountain Division Trail in Fryeburg, Maine, a paved 5-mile trail away from traffic.

End points: Maine State Visitor Information Center, 97 Main St. US Route 302 and Route 113/Portland St. at Lyman Dr., Fryeburg, Maine.

### Best Spa

#### Christmas Farm Inn and Spa

3 Blitzen Way, Jackson • (603) 383-4313 • [christmasfarminn.com](http://christmasfarminn.com).

### Best Ski Shop

#### Stan & Dan's Sports

Skis, boots, boot fitting, rentals, clothing, bikes and other gear.

2936 White Mountain Highway, North Conway • (603) 356-6997.

### Best Outdoor Equipment Store

#### Eastern Mountain Sports

EMS sells outdoor equipment and clothing from both name brands and its own EMS line.

1642 White Mountain Hwy, North Conway • (603) 356-8618.

### Best Yoga Instructor April Deschenes

Deschenes is an instructor at Cranmore Fitness Center in North Conway.

1 Skimobile Rd, North Conway • (603) 356-6301.



## FOOD & DINING

**Best Restaurant Overall**  
**Oxford House Inn**  
 548 Main St., Fryeburg, Maine  
 • (207) 935-3442

**Best Restaurant**  
**— Ambiance**  
**White Mountain Cider Co.**  
 Route 302, Glen, NH • (603) 383-9061

**Best Restaurant — Lunch**  
**Rosie's Restaurant**  
 1547 White Mountain Hwy  
 Tamworth • (603) 323-8611

**Best Restaurant — Ethnic**  
**May Kelly's Cottage**  
 3002 White Mountain Hwy,  
 Conway • (603) 356-7005

**Best Restaurant — Asian**  
**Taste of Thai**  
 1857 White Mountain Hwy,  
 North Conway • (603) 356-7624

**Best Restaurant — Mexican**  
**Fiesta Jalisco**  
 6 Mountain Valley Blvd, North  
 Conway • (603) 733-5550

**Best Restaurant — Italian**  
**Vito Marcello's Italian Bistro**  
 45 Seavey St, North Conway •



**Chef Vito Marcello of Vito Marcello's Italian Bistro, winner for Best Italian Restaurant**

(603) 356-7000 • (603) 733-5550

**Best Restaurant — Vegetarian**  
**The Local Grocer**  
 3358 White Mountain Highway  
 North Conway • (603) 356-6068

**Best Restaurant — Breakfast**  
**Sunrise Shack**  
 Also won for Best Cheap Eats.  
 On Stanley's Hill, 644 White Mountain Highway, Glen, • (603) 383-7169.

**Best Restaurant — Brunch**  
**Red Fox Bar & Grille**  
 49 NH-16, Jackson • (603) 383-4949 • redfoxbarandgrille.com.

**Best Restaurant — Cheap Eats**  
**Sunrise Shack**  
 644 White Mountain Hwy,  
 Glen • (603) 383-7169.

**Best Restaurant — Family**  
**Muddy Moose Restaurant & Pub**  
 2344 White Mountain Hwy,  
 North Conway • (603) 356-7696.

**Best Desserts**  
**Riverstones Bakery**  
 Kancamagus Highway (Route 112), Conway • (603) 447-2253.



**Musicians performing at May Kelly's Cottage, which won for Best Ethnic Restaurant. (FILE PHOTO)**

## DRINKS & BARS

**Best Apres Ski**  
**Red Parka Pub**  
 3 Station St, Glen • (603) 383-4344

**Best Beer Selection**  
**Moat Mountain Smoke House & Brewery**  
 3378 White Mountain Highway,  
 North Conway • (603) 356-6381

**Best Wine Selection**  
**Oxford House Inn**  
 548 Main St., Fryeburg, Maine  
 • (207) 935-3442

**Best Local Brewed Beer**  
**Flip Flop Ale — Saco River Brewing**  
 10 Jockey Cap Lane, Fryeburg, Maine • (207) 256-3028 • sacoriverbrewing.com

**Best Sports Bar**  
**Delaney's Hole in the Wall**  
 2966 White Mountain Highway,  
 North Conway • (603) 356-7776

**Best Neighborhood Bar and Best Trivia Night**  
**302 West Smokehouse and Tavern — Tuesdays**  
 636 Main St., Fryeburg, Maine  
 • (207) 935-3021

**Best Place For Cocktails**  
**Black Cap Grille**  
 1498 White Mountain Highway,  
 North Conway • (603) 356-2225

**Best Meet-Up Bar**  
**Cigar Shenanigans**  
 1903 White Mountain Hwy,  
 North Conway • (603) 307-1036

**Best Signature Drink**  
**Seamumus Lime Ricky (McGrath's Tavern)**  
 3465 White Mountain Highway,  
 North Conway • mcgrathstavernnh.com • (603) 733-5955.

## BUSINESSES

**Best Bed & Breakfast**  
**Inn at Ellis River**  
 17 Harriman Rd, Jackson •  
 (603) 383-9339

**Best Gift Shop**  
**The Penguin Gallery**  
 2655 White Mountain Hwy,  
 North Conway • (603) 356-7600

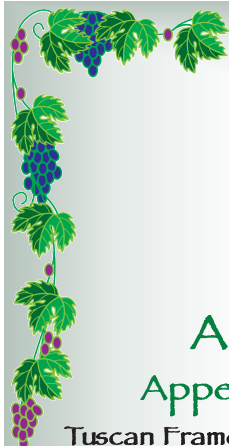
**Best Flower Shop**  
**Dutch Bloemen Winkel**  
 18 Black Mountain Rd, Jackson • (603) 383-9696.

**Best Jewelry Store**  
**North Country Fair Jewelers**  
 S Main St, North Conway •  
 (603) 356-5819.

**Best Candy Store**  
**Zeb's General Store**  
 2675 White Mountain Hwy,  
 North Conway • (603) 356-9294.

**Best Pet Supply Store**  
**Four Your Paws Only**  
 1821 White Mountain Hwy,  
 North Conway • (603) 356-7297.

**Best Hair Stylist**  
**Ashley Snow, Pleasant Image**  
 2686 White Mountain Hwy,  
 North Conway • (603) 356-3437



## A Sampling Of Our Delicious Menu...

### Appetizers

#### Tuscan Framers Appetizer

Cannellini Beans, Caramelized Onions,  
Prosciutto, Garlic Italian Toast

#### Toasted Ravioli

Eight cheese filled ravioli, lightly breaded, fried and  
topped with marinara & melted mozzarella.

#### Fried Calamari

Lightly battered and fried, topped with banana peppers.  
Served with our homemade marinara sauce.

#### Bruschetta Pomodoro

Grilled Italian bread, tomato, kalamata olives,  
garden herbs, prosciutto di parma, pecorino.

#### Antipasto Classico

Capicola, prosciutto, grana padano, sopressata,  
marinated kalamata olives, sharp provolone,  
artichoke heart, tomato, fresh mozzarella  
and basil, stuffed cherry peppers.

### Children's Menu

Ravioli With Meatballs • Chicken Fingers  
Fettuccini Alfredo

#### Homemade Gelato, Spumoni

#### Fresh Fruit Sorbetto

Tiramisu • Cannoli • Biscotti  
and Other Homemade  
Italian Pastries and Desserts!

**We Use All Natural Chicken, Pork,  
Grass Fed Beef, Wild Caught Fresh Fish,  
Homemade Pasta Features  
And Local Produce When Available**

*Chef Owned & Operated By Vito Marcello - "Buon Appetito"*

45 Seavey St., North Conway Village • 356-7000 • [www.VitoFoods.com](http://www.VitoFoods.com)

Dinner from 5pm • Closed Tuesdays (Closed Monday Seasonally)

### Entrées

*Entrées served with our Famous House  
Salad and Fresh Baked Bread*

#### Fettuccine with Prosciutto, Spinach & Mushrooms

in a cream sauce, served with house salad

#### Penne, Broccoli & Chicken

Chicken tenders sautéed with broccoli cream  
sauce, served with house salad

#### Spaghetti Carbonara

Caramelized onions, peas, pancetta, fresh egg,  
romano in a cream sauce, served  
with house salad

#### Chicken Parmigiana

Lightly breaded topped with mozzarella  
and marinara sauce, served with house salad  
& pasta

#### Veal Parmigiana

Tender Provimi veal breaded & topped with  
mozzarella & marinara sauce, served with  
house salad & pasta

#### Eggplant Parmigiana

Over-baked then topped with marinara &  
cheese, served with house salad & pasta

#### Frutti Di Mare

Fettuccini topped with sauteed mussels,  
shrimp, scallops, chopped clams and calamari  
with white wine, oil, garlic sauce, served  
with house salad

#### Lasagna Ala Vodka

Layers of lasagna noodles with herbed ricotta,  
sweet ground Italian sausage, romano cheese,  
and a layer of hard boiled eggs topped with  
vodka cream sauce.

### Cocktails

#### Cucumber Martini

Hendricks Gin, Cucumber, Basil

#### Italian Margarita

Tequila, Triple-Sec, Amaretto, Scratch Sour,  
Sugar Rim

#### Cranberry Martini

Captain Morgans Rum, Triple sec,  
Fresh Cranberry & Lime Juice

#### Espresso Chocolate Martini

Chocolate Drizzled Martini Glass, Vodka, Baileys,  
Grand Marnier & Espresso. Perfecto!

#### Lemon Italian Ice

Vodka, Triple Sec, Limoncello, Lemon Sorbetto

#### Vito's Chocolate Martini

Stoli Vanilla Vodka, Blend of Godiva Chocolate  
Liqueurs, Creme de Cocoa, Splash of Bailey's

#### Bistro Negroni

Gin, Aperol, Sweet Vermouth, Topped with  
Prosecco

#### Vito's Holiday Sangria

A House Favorite!

**Serving Wines From Italy  
Including Super Tuscan Wines  
From The Vineyards of IL Borro**

### Gourmet Pasta Sauces

Three generations have been creating our  
family's classic and healthy Italian pasta sauces.  
My gourmet pasta sauce begins with using only  
the finest of healthy ingredients such as imported  
San Marzano tomatoes and first cold pressed  
Italian Extra Virgin Olive Oil, just as my father  
and grandfather used before me.

I am so proud of these traditions and proud to  
share my love for authentic Italian food by  
offering my gourmet pasta  
sauces and salad dressings for  
you to take home and enjoy!

*Vito Marcello*

- Tomato Basil  
Marinara
- Fra Diavolo  
Sauce
- Roasted Garlic  
& Eggplant
- Sunday Sauce
- Puttanesca
- Vodka Sauce



**For Special Dietary Needs Gluten Free Menu – GF Pasta Imported from Italy**



## SHOPPING

# Find the deals Outlets

Shopping is a year-round activity in North Conway, home to Settlers Green Outlet Village and the boutique shops of North Conway Village. Best yet, New Hampshire has no sales tax, so thrifty bargain conscious shoppers can save on their purchases compared to shopping out of state.

Settlers Green Outlet Village opened in 1988, and is home to a collection of national brand, high-end outlets, grouped together in an outdoor village setting. Settlers Green today has stores on both sides of Route 16, with Settlers Crossing, home to L.L. Bean and Eastern Mountain Sports among other shops, and is its latest build-out, Settlers Streetside, which opened last year.

Visitors can find sculptures and other art installations throughout the center and Settlers Green holds promotional and entertainment events throughout the year to enhance shoppers' savings and fun.



A busy day at Settlers Green. (JAMIE GEMMITI PHOTO)

## PUBLIC ART

When the owners of Settlers Green opened the Settlers Streetside complex in 2016, they commissioned new works of art from artists around New England to enhance the project. Visitors can see paintings by Rebecca Klementovich and Kristen Pobatschnig; and sculptures by Michael Alfano, Dale Rogers, Melanie Zibit and Antoinette Prien Schultze.



Artist Rebecca Klementovich works on her mural at Settlers Streetside.

**Our Real Estate Services offer both Commercial and Residential brokerage as well as Short Term/Vacation Rental, and Long Term Rental Services.**

*Total Concept is committed to providing full service Real Estate, Management, and Maintenance services for your Residential, or Commercial property. Let Total Concept provide you with the peace of mind of knowing that your property is being professionally, and well, cared for.*

**BUYING—** TCRE works with you to help you search for your dream home, commercial space, or prime land. Whether you are seeking investment property or a personal home, we work with you guiding you through the process to make it as smooth and quick as possible.

**SELLING—** Any agent can list a property with basic information. We go beyond by providing complete documentation to help move your property to closing as quickly as possible. We actively seek out potential buyers and offer guidance to help you put your best foot forward when showing your home.

**RENTALS—** TCRE also handles short or long term vacation or home rentals. We can help locate a property for you or assist in renting your investment property. We work with residential, vacation, and commercial properties.

**TOTAL CONCEPT**  
Property Management Real Estate

**Real Estate in New Hampshire's  
Lakes Region and White Mountains**



**Specializing in Residential, Commercial, Land,  
Vacation Rentals Sales & Leasing**

Total Concept offers full service real estate sales, property rentals, and other related services. This array of services provides a level of care not found in your typical real estate agent office.

Whether you require the full array of services or not, TCRE will fully assist you in your home shopping or selling experience. We want to help you search for the new home or investment property that meets your needs.

PO Box 372, Madison, NH 03849  
(603) 367-9841 • cell (603) 662-9841  
[www.totalconceptnh.com](http://www.totalconceptnh.com)





Shoppers on Main Street in North Conway Village.  
(JAMIE GEMMITI PHOTO)

## SHOPPING

# Unique finds Boutiques

North Conway Village is a hub of small boutiques, featuring local and New Hampshire-made items, many of which you won't find elsewhere. The downtown shops include Zeb's, which sells many New England-made items and has a large candy counter; an old-fashioned 5 and 10 cent store; White Birch Books, an independent bookstore; and Fields of Ambrosia, selling bath and body care products. The village also has two coffee shops and several restaurants.

Many of the shops in North Conway Village and elsewhere in the Mount Washington Valley are locally owned and are members of The White Mountain Independents, a network of locally owned and independently operated retail businesses in the valley. The group works to support shopping local with events, coordinated sales and other promotions.

Find out more at [whitemountainindependents.com](http://whitemountainindependents.com).

**NORTHEAST Snowmobile  
& ATV Rentals**  
[www.northeastsnowmobile.com](http://www.northeastsnowmobile.com)

**Special \$109  
3-Hour Rental  
Sunday-Friday  
no experience needed**



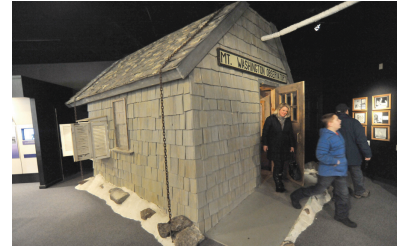
**Enjoy the scenic terrain on our NEW Arctic Cat snowmobiles.**  
Park and ride at either of our locations... 532 Main St., Fryeburg, ME & 325 Main St., Gorham, NH



## MOUNTAINS



A windy day atop Mount Washington seen from Intervale on a day in February when winds gusted to almost 70 mph and temperatures dipped to -63 F. (JAMIE GEMMITI PHOTO)



**Want to experience the world's worst weather without climbing Mount Washington in winter?** Stop by the the Weather Discovery Center in North Conway and step inside the replica of the Mount Washington Observatory's building where the 231 mph world record wind was recorded in 1934. See how the pioneer observers lived, and with the press of a button, hear the wind howl and feel the building shake. (2779 White Mountain Highway, North Conway, 356-2137)

# The Rockpile Mount Washington

The highest mountain in the Northeast, Mount Washington is an iconic peak that lends its name to the valley below. It can be seen from North Conway Village and many points in the area rising above neighboring mountains in the Presidential Range. Legends and stories date back to the first settlers, if not earlier, and the mountain has beckoned tourists, adventurers and scientists to its heights since the 1800s. Thousands hike it every year, mostly in summer, although many experienced climbers make the trek in winter (guided trips are available), and ice climbers find world-class climbing in the ravines. Skiers also flock to its slopes, particularly for spring skiing in Tuckerman Ravine and on the Sherburne Trail. The mountain's unpredictable extreme cold and high winds can be a deadly for unprepared hikers. Winds exceeding hurricane force occur an average of 110 days per year.



Hikers at the Tip Top House on the summit of The Rockpile. (JAMIE GEMMITI PHOTO)

## QUICK FACTS

**Also known as:** The Rockpile, Home of the World's Worst Weather, Agiocochook (a Native American name).

**Height:** 6,288 feet, highest peak in the Northeast.

**World record wind:** Highest wind, 231 mph, recorded April 12, 1934 (stood until 1996).

**History:** First recorded summit: Darby Field, 1642.

**Science:** Mount Washington Observatory maintains a year-round weather station on the summit and conducts scientific research under extreme conditions.

**Danger:** More than 150 people have died on the mountain since 1849, many due to the extreme weather, falls and avalanches.

**Best views:** Up close on the summit, on a drive through Pinkham or Crawford Notch, from the Scenic Vista on Route 16 in Intervale and from the summit of Wildcat.

**Find it in Books:** *Not Without Peril*, by Nicholas Howe, gives an eminently readable account of hiking misadventures on the mountain over the past 150 years.

## ADVENTURE

# The world at treeline

### PINKHAM NOTCH

— Guided winter tours aboard the Mount Washington SnowCoaches are about 1.5-hours long and depart daily from December through March from the Great Glen Trails base lodge at the base of Mount Washington on a first-come, first-served basis. Advance reservations may be made for the 9 a.m. trip only.

The SnowCoaches climb to about 4,200 feet, otherwise known as treeline, at about two-thirds the way to the 6,288-foot summit of Mount Washington. Riders have a little time



**SnowCoach on the Mount Washington Auto Road. (COURTESY PHOTO)**

outside at the high point of the trip before riding back down or snowshoeing down if they choose.

Sunrise SnowCoach tours are set for Jan. 20, 6:15-8:15 a.m., and Feb. 17, 20 and 24, 5:45-7:45 a.m.

More information can be found at [snowcoachnh.com](http://snowcoachnh.com) or by calling (603) 466-3988.



**EASTERN  
MOUNTAIN  
SPORTS®**

**10%-60%<sup>OFF</sup>  
ENTIRE STORE**

**NORTH CONWAY LOCATION ONLY:  
1498 WHITE MOUNTAIN HIGHWAY**

**VISIT OUR NEW LOCATION OPEN IN 2019:  
1647 WHITE MOUNTAIN HWY**

**Zeb's General Store in the Village of North Conway**



*Enjoy our wonderful historic village with many shops, restaurants  
AND Zeb's - a shopping experience unlike any other*

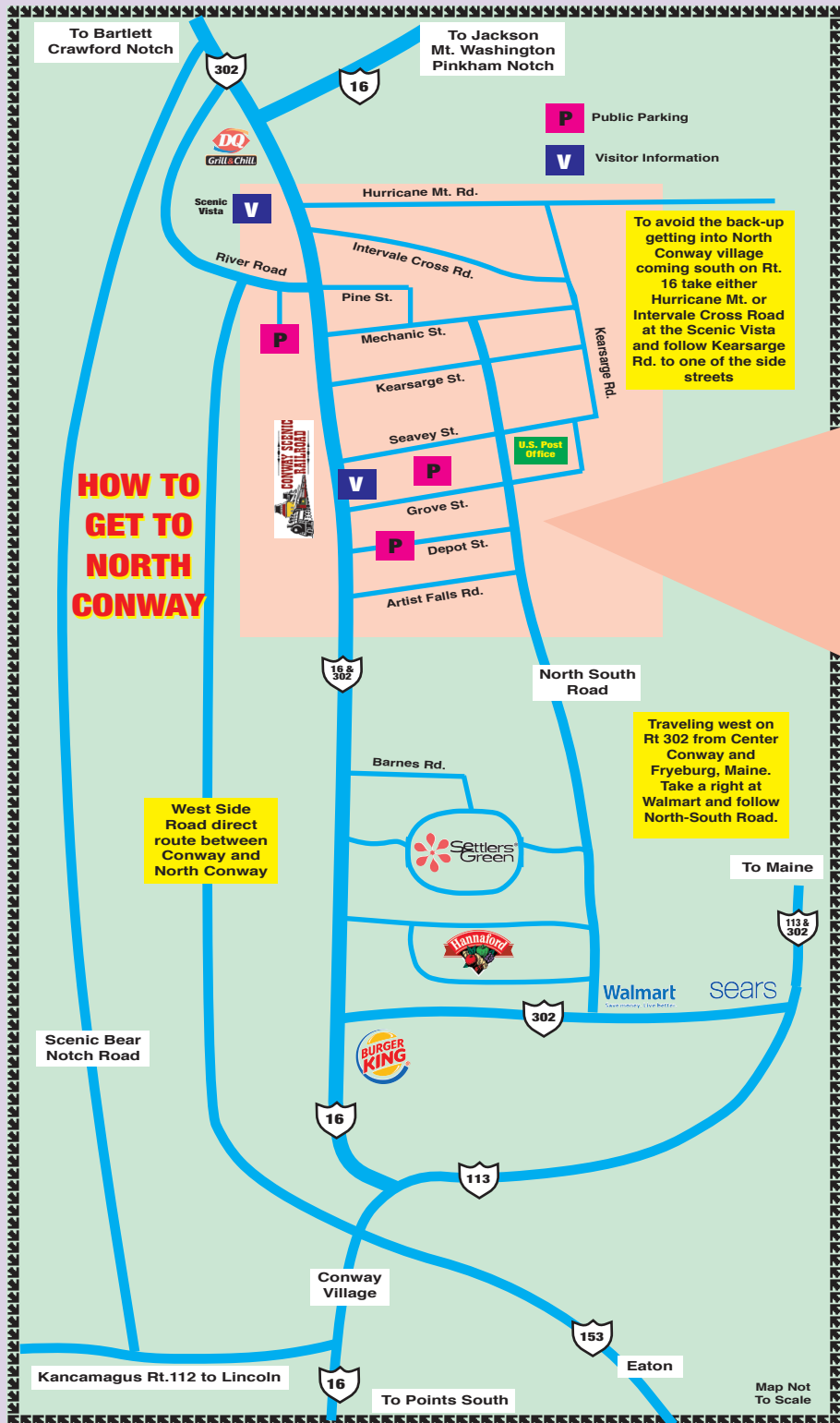
**Zeb's General Store**

Main St., Village of North Conway • 603 356-9294 • [www.zeb.com](http://www.zeb.com)



# Welcome to North

North Conway Village is a buzzing hub in the Mt. Washington Valley, with dozens of locally owned restaurants, unique stores and shops and lodging establishments. Schouler Park lies right in front of the historic, Victorian train station which acts as a landmark for any North Conway Village activity. A year-round resort area, North Conway is the largest village within the town of Conway, which is bounded on the east by the Maine state line. The White Mountain National Forest is to the west and north. The Conway Scenic Railroad features train rides that leave from the village. In late September through early October, tourists arrive to see the autumn colors on the surrounding mountains and forests. In the winter, the village is the nighttime destination for skiers visiting the area resorts, including North Conway's own Cranmore Mountain

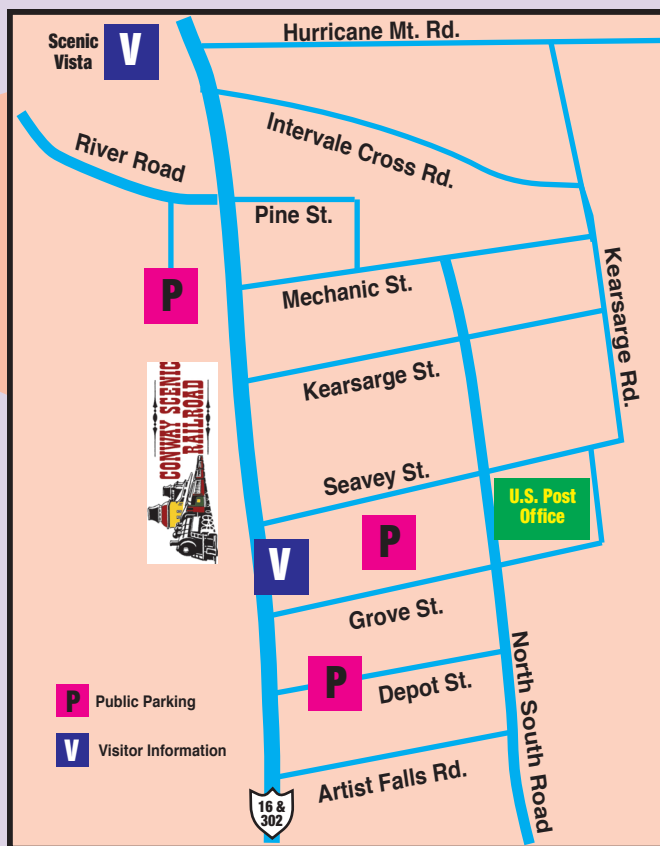


# Conway Village!

## There are many great restaurants and shops; here's how to find them!

as well as nearby Attitash Resort, Black Mountain and Wildcat Mountain. North Conway is also a major rock climbing destination in the northeastern United States,[2] particularly Cathedral Ledge in Echo Lake State Park. The 500-foot cliff overlooks Echo Lake and North Conway from the west. Unlike nearby White Horse Ledge, another rock climbing site, Cathedral Ledge has an automobile road to the

summit, which provides fine views of the Saco River Valley.



**PARKING 1** — From the South — North-South Road begins at Wal-Mart and passes by the back of Settlers Green. Take this road going North and follow until you get to Depot Street. Take a left onto Depot St and Public Parking is on your right.

**PARKING 2** — West Side Road begins at the intersection of Route 16 and Washington St. From Route 16 take a left onto Washington St which turns into West Side and follow until the Stop sign at the end of the road. Take a right onto River Rd and follow over the bridges, before you get into the village and the train track trestle, take a right into Public Parking behind the Eastern Slope Inn and Whitaker Suites. Convenient parking and an easy walk through the pedestrian tunnel brings you up to North Conway Village businesses.

From the North:

**PARKING 3** — Driving South, at the Scenic

Overlook take left onto Hurricane Mountain Rd and follow until Kearsarge Rd. Take a right onto Kearsarge Road and follow to Mechanic St. Take a right onto Mechanic St and then another right onto Pine St. On Pine St is the John Fuller School and there is Public Parking available when School is not in session.

**RESTROOMS 1** — North Conway Community Center is located next to the park and across from the Visitor Information Booth.

**RESTROOMS 2** — Olympia Sports is located in a complex of businesses in the center of town by the traffic light. Restroom are located next to a cluster of shops in the lower level.



## HIKING



Hiking with a group or with a guide is a great way to find out about new trails and learn the ins and outs of winter hiking. (ED PARSONS PHOTO)

# Getting started Winter hiking

For the uninitiated, winter hiking may seem like entering a cold, cold world. But the benefits of camaraderie, healthy exercise and beautiful vistas offer great rewards for those who learn its secrets. It's also a good way to experience fabulous outdoor adventures at a minimal cost.

The best way to get started is to learn from experienced people. These can be found in many ways. On the internet, check out Northeast hiking websites like "Views From the Top" and "Rocks On Top." Here you can find veteran hikers' answers to questions from beginners as well as announcements about group hikes.

The Appalachian Mountain Club offers guided and group winter hikes to its members. You can sign up online at [outdoors.org](http://outdoors.org). Local outfitters also offer guided hikes and climbs in the White Mountains.

If you drive to a place like the AMC's Pinkham Notch Visitor Center, north of North Conway on Route 16, you can ask at the hiker's information desk about hiking suggestions and trail conditions, and rent snowshoes there if needed. Reach the center at (603) 466-2721.

However you go, pack the essentials, pay attention to safety guidelines, trail conditions and weather reports. Snowshoes may be needed. Good preparation can make all the difference between a fun experience and a dangerous misadventure. Find out how to be prepared at [hikesafe.com](http://hikesafe.com), and consider buying a N.H. Hike Safe card at [wildlife.state.nh.us](http://wildlife.state.nh.us). It supports N.H. Fish & Game rescues, and people who have the cards are not liable to repay rescue costs if they need to be rescued.

## BEGINNER TRAILS

### Pinkham Notch

**Lost Pond:** This pond, called a "glacial tarn," is reached by a one-mile trail directly across Route 16 from Pinkham Notch Visitor Center. A "must do" for beginners.

**Liebeskind's Loop, Crew-Cut Trail and George's Gorge Trail:** A short, fun network of trails, easily reached from Pinkham Notch Camp, by starting out on the Tuckerman Ravine Trail and then turning right on the trail known as the Old Jackson Road. Visit Brad's Bluff and Lila's Ledge, where great views of the notch can be found.

### Crawford Notch

**Around-the-Lake Trail:** The 1.2-mile loop hike that starts next to the Highland Center and winds down to the shore of a small secluded pond called Ammonoosuc Lake and continues around it. Across the lake, a 0.3-mile spur path called the Red Bench Trail continues to a comfortable red bench, with a good view of the Presidentials.

**Mount Willard:** The 1.6-mile Mount Willard Trail is another must for aspiring hikers. The trail is likely well packed, and the summit gives a classic view of the U-shaped Crawford Notch. The trail begins behind the Depot, just south of the AMC Highland Center. It begins as the Avalon Trail and in 30 feet turns left on the Mount Willard Trail.

### Mount Washington Valley

**Cathedral Ledge:** The 1.4-mile auto road to the top of Cathedral Ledge is unplowed in the winter, and is a nice climb to a classic view of the Mountain Washington Valley. To get there, turn left on River Road at the lights at the north end of North Conway. In 1.5 miles, bear left on Cathedral Ledge Road and continue in. The road bears right and the plowed section ends. Walk past the gate and continue up the road. At the top turnaround, bear left through the woods toward the cliff edge, but stay well away from it, as there may be ice under the snow. There is a section with fencing if you want to get close. Be sure to go to the southern end of the summit for more views and safe terrain. The view of the valley is great.

# Hiking around North Conway

One of the best ways to appreciate the valley in which North Conway sits is to see the view from any of the many peaks that surround the town.

The village sits just south of Mount Kearsarge North, west of the Green Hills and east of the Moat Mountains. Trails lead up all of these mountains, and most of the trailheads are just minutes away from downtown North Conway.

Many of these hikes are more challenging, but there's no saying you have to climb a mountain to enjoy a beautiful winter hike. Puddin' Pond, located off Artist Falls Road offers a relatively flat 1.6-mile loop beginning at the Thompson Road Trailhead, off Artist Falls Road in North Conway. The hike winds through spruce, fir and hemlock stands and past a beaver dam along the shores of Pudding Pond.



Hikers descend Mount Kearsarge. (ED PARSONS PHOTO)

## THREE INTERMEDIATE TRAILS IN AND AROUND NORTH CONWAY

**Kearsarge North:** Kearsarge North (3,268 feet). The 3.1-mile trail to its summit winds steadily upward — first through a shadowy hemlock forest, then past scattered ledges, and finally through shady evergreens on the north side — to a bare summit with a restored historical fire tower. The empty tower is open to the public, providing shelter from the wind and many windows for a nearly unobstructed 360-degree view.

To get there, from North Conway take Route 16 north and just across the railroad tracks after the scenic vista in Intervale, take Hurricane Mountain Road on the right. In 1.5 miles, pull into a small parking lot on the left, next to a trail sign.

**Green Hills:** The Green Hills is the range of low hills on the east side of North Conway. Cranmore Mountain Ski Area is part of that range. Just south of Cranmore, and visible from town, is a sharp little peak called Peaked Mountain (1,739 feet). It is located in the Nature Conservancy's Green Hills Preserve.

This small hill lives up to its name. On the small flat summit you might

feel as if your perch and the surrounding landscape have been arranged for your viewing pleasure. The 4-mile loop hike over the summit has a great variety of terrain.

To get there, just south of North Conway village, take Artist Falls Road on the left, cross the North/South Road under the railroad bridge, and turn right on Thompson Road. Park at the Thompson Road Trailhead. Walk a short way to a Nature Conservancy kiosk, where maps are posted. At the kiosk, take a left (there are many paths in this multiuse area; look for the trail sign). In a half-mile, take a left at a four-way junction onto the Peaked Mountain/Black Cap Connector. This trail follows a winding old road for half a mile to another Nature Conservancy kiosk. Bear sharp right there, just before the kiosk.

The next section of trail climbs to open ledges with good views of the valley and the back side of Cranmore, continuing through a small wooded area before reaching the top. After taking in the views descend and take the Middle Mountain Connector to the Middle Mountain Trail. Take a right

on that, taking care on icy spots on the descent of this section in a steep ravine next to a brook. This trail leads back to the parking area.

**South Moat:** The 2.7-mile trail up to the southern summit of the Moat Range, called South Moat (2,770 feet), is a satisfying venture any day. Like Kearsarge North, the top of South Moat is bare, and the view outstanding. In the winter, the wind on the summit ledge is usually cold and brisk, but exposure to it is found only on the last few yards of the climb and the top itself.

The trail is varied and enjoyable. The bottom third is new, starting at a new trail parking lot. The middle section of trail is old and rocky, and the upper section primarily on wooded ledges. Care must be taken on icy sections.

To get there, from the stoplights in Conway, take Washington Street north, which turns into West Side Road. In 0.9 miles from the lights, take a left on Passaconaway Road, which turns into Dugway Road. In 4.1 miles from Conway, pull into the trail parking lot on the right.



## HIKING

# Family hikes

Pack a pair of hiking poles, snacks, water, a compass, flashlight and good hiking boots, and bring the family into the great outdoors. Most local ski touring centers are offering guided nature snowshoe walks and rent snowshoes. Here are a few short hiking suggestions:

Tin Mountain Conservation Center on Bald Hill Road in Albany offers a network of trails serviced by a trail map kiosk. Call (603) 447-6991 for more information. Conway's Pudding Pond network of trails off Artist Falls Road in North Conway makes for a nice walk.

Diana's Baths off West Side Road is maintained by the U.S. Forest Service and offers a scenic introduction to nature. The Albany Town Forest is another fine hiking spot, located behind the U.S. Forest Service's Saco Ranger Station off the Kancamagus Highway just south of the village of Conway. The Appalachian Mountain Club offers family nature education programs and hikes, as well as evening lectures. Call (603) 466-2721 for more information.



Good hiking boots and poles, a warm jacket and snow pants, hat and gloves can make all the difference when you take kids out for a hike in the woods. (COURTESY PHOTO)

## UNIQUE PERSONAL CUSTOM DESIGNS



*by Emily & Greg*

**FINEST AREA SELECTION OF  
DIAMONDS & PRECIOUS GEM  
CREATIONS. PLUS...HANDMADE,  
ANTIQUE AND ESTATE JEWELRY**

**North Country Fair  
JEWELERS**  
2448 Main St., North Conway - 356-5819  
*Celebrating Our 50th Year!*



2016, 2017, 2018  
BEST JEWELER



## Visit Our 2 Locations



### North Conway

603-730-5044  
2628 White Mountain Highway  
Open Daily  
Visitors explore exhibits and audio-visual displays about Tuckerman Ravine, the 10th Mountain Division, lost ski areas, New England Olympians and more.

### Franconia Notch

603-823-7177  
Interstate 93 Exit 34B,  
Open Daily from June - March  
The permanent exhibit features a coherent timeline of skiing from its prehistoric roots up through the advent of the modern shaped ski and the part played in its acceptance by Franconia native Bode Miller. Temporary exhibits change annually.



Both locations have museum shops with unique skier gifts. Admission is free, with donations gratefully accepted.

**[Newenglandskimuseum.org](http://Newenglandskimuseum.org)**

## ENTERTAINMENT

# Live music Concerts



Local band Bennett & Perkins performing at Stone Mountain Arts Center in Brownfield, Maine. (COURTESY PHOTO)

## STONE MOUNTAIN ARTS CENTER

695 Dugway Rd, Brownfield, Maine • (207) 935-7292

The Stone Mountain Arts Center in Brownfield, Maine, presents nationally-renowned acts throughout the year. The doors open at 6 p.m. for dinner; shows start at 8 p.m. unless otherwise noted.

Scheduled performances include:

**Dec. 31:** Ghost of Paul Revere (7 and 9:45 p.m.)

**Jan. 18:** Susan Werner

**Jan. 19:** Winter Wine Dinner

**Jan. 20:** Barn Burner with Tricky Britches

**Jan. 25:** Roomful of Blues

**Feb. 2:** Gibson Brothers

**Feb. 8:** We Banjo 3

**Feb. 9:** The Song & The Story: Amy Helm and Cindy Cashdollar

**Feb. 14:** Dar Williams

**Feb. 15:** Noam Pikelny (of the Punch Brothers) and Stuart Duncan

**Feb. 16:** Shemekia Copeland

**Feb. 22:** Juanito Pascual

**Feb. 23:** Ward Hayden & The Outliers

**Feb. 28:** Bob Marley

**Feb. 24:** Session Americana

**March 1:** Rachael and Vilray

**March 2:** Adam Ezra Group

**March 9:** Sierra Hull

**March 15:** Kat Edmonson

**March 22:** Dom Flemons

**March 27:** Los Lobos

**March 29:** Ricky Skaggs & Kentucky Thunder

**March 30:** Acoustic Festival with Low Lily and Mile Twelve



A scene from The Metropolitan Opera's "Carmen," which will be shown live at the Eastman Performing Arts Center on Feb. 2.

## EASTMAN PERFORMING ARTS CENTER

18 Bradley St, Fryeburg • (207) 935-9232 • [boxoffice@fryeburgacademy.org](mailto:boxoffice@fryeburgacademy.org)

The Leura Hill Eastman Performing Arts Center, located on the campus of Fryeburg Academy, in Fryeburg, Maine, offers an array of entertainment including the Met Opera Live series. Upcoming:

**Jan. 11:** Bradley Backstage: Al Hoppers & Friends Jazz Band at 7:30 p.m.

**Jan. 12:** Met Opera Live: "Adriana Lecouvreur" at 1 p.m.

**Feb. 2:** Met Opera Live: "Carmen" at 1 p.m.

**Feb. 10:** Met Opera Live: "La Fille du Regiment" at 1 p.m.

**March 30:** Met Opera Live: "Die Walkure" at 12 p.m.



**ED TOBIN REALTOR**

Cell: 603-662-4356

Office: 603-539-3200

Fax: 603-539-1511

[edtobin62@gmail.com](mailto:edtobin62@gmail.com)

[ossipeelakere.com](http://ossipeelakere.com)



1018A Rt. 16, PO Box 430, Ossipee, NH 03864





## LIVE PUB MUSIC

Live music is featured throughout the valley at pubs, including the following:

**Red Parka Pub**, 3 Station St, Glen • (603) 383-4344 • weekends and Mondays.

**Shannon Door Pub**, 19 Spencill Hill Rd, Jackson (603) 383-4211

**Wildcat Inn and Tavern** 94 Main St, Jackson (603-383-4245)

**Shovel Handle Pub** 357 Black Mountain Rd • (800) 677-5737)

**McGrath's Tavern**, 3465 White Mountain Hwy, North Conway • (603-733-5955) • Thursdays.

**May Kelly's**, 3002 White Mountain Hwy, Conway • (603-356-7005) • Sunday afternoon Celtic music.

**Deacon Street Restaurant**, 32 Seavey St, North Conway • (603)356-9231 • Friday and Saturday evenings.

**Sea Dog Brewing Co.** (603-356-0590) Fridays and Saturdays

**Almost There**, 1287 NH-16, Albany • (603) 447-2325 • Fridays.

**Route 302 West Smokehouse**, 636 Main St, Fryeburg, Maine • (207) 935-3021.

**Top of the Ninth/Fryeburg House of Pizza**, 11 Portland St, Fryeburg, Maine • (207-935-4172),

**Lake Kezar Country Club at Ebenezer's Pub**, 578 Main St, Lovell • (207) 925-3200.

**Corner House Inn**, 22 Main St, Center Sandwich • (603) 476-3060 • Music and storytelling.

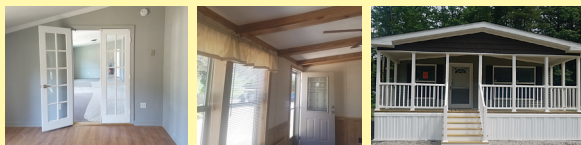


Bennett & Perkins are among the local groups that can be seen performing live at local venues. (FILE PHOTO)



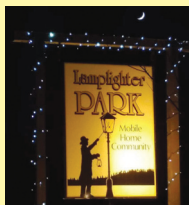
**S and B Mobile Home Sales**  
at Lamplighter  
**Mobile Home Community**  
Rt. 16, Conway, NH • 603-447-5720  
for more info contact: lamplightermgr@hynesnet.com  
www.lamplighter-mhc.com

**Stop by our office and see for yourself what Lamplighter MHP has to offer.**



**We sell  
Commodore  
single and  
ranch homes.**

Our property has an on-site Office, Community Center, private beach on the Saco River, and walking trails to enjoy the outdoors. Located conveniently off of Route 16 between the villages of Conway and North Conway.

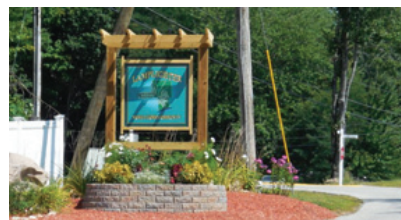


**If you are looking for a vacation home, a seasonal home, or a year round home, our community can fit that lifestyle.**

## REAL ESTATE

# Find a community

Lamplighter Mobile Home Park is a community within a community. The small local community of the park features a private



beach on Saco River and direct access to the wooded trails of the Conway Recreation Path.

At the same time, the park's location on Route 16 between the villages of Conway and North Conway, offers easy access to all that the Mount Washington Valley has to offer, from shopping, dining and entertainment to climbing, hiking, snowsports, scenic rides and state parks.

Some residents enjoy all the seasons here; others maintain vacation homes. Lamplighter sells Commodore single and ranch style homes — one-floor living at an affordable price. For more information visit [www.lamplighter-mhc.com](http://www.lamplighter-mhc.com) or call the park office at (603) 447-5720.



Start your home SEARCH on our NEW website



[www.BadgerRealty.com](http://www.BadgerRealty.com)

(603)356-5757



Serving the Mt. Washington Valley  
and Western Maine since 1965!

**Residential and Vacation Homes**  
**Condominiums**  
**Commercial Properties**  
**Year-round & Seasonal Rentals**  
**Land**

*Leading*  
REAL ESTATE  
COMPANIES  
OF THE WORLD

2633 White Mountain Highway, N. Conway, NH 03860 • [info@BadgerRealty.com](mailto:info@BadgerRealty.com)



**Offices in North Conway, Jackson and Berlin, NH**



# New England Ski Museum

## Ski history exhibits

The New England Ski Museum this year opened a new branch in the former North Conway Community Center adjacent to Schouler Park in North Conway Village.

Designated the Eastern Slope Branch, the museum's exhibits pay special attention to North Conway and the Valley's place in skiing history, including a full wall mural of Tuckerman Ravine and exhibits featuring local Olympians, the 10th Mountain Division ski troops, the evolution of ski wear and equipment and Hannes Schneider, a world famous Austrian skier who revolutionized ski instruction and brought his Arlberg technique to North Conway's Mount Cranmore in the 1930s.

A rotating temporary exhibit, a ski library, a vintage ski collection and a Cranmore Skimobile on loan from Spike Smith of Conway round out the exhibits. The new Eastern Slope branch of the museum is open daily from 9 a.m. to 4 p.m. For more information, go to [skimuseum.org](http://skimuseum.org) or call (603) 823-7177.



New England Olympians' gear on display.



**Call EXIT Realty Leaders**  
Serving NEW HAMPSHIRE  
Let us help you find your Perfect Home!



**354 Route 16B, Ctr. Ossipee, NH**  
**603-539-9595**

**[www.EXITRealtyLeadersNH.com](http://www.EXITRealtyLeadersNH.com)**

## EXIT Realty Leaders

### Real Estate Professionals of New Hampshire

EXIT Realty Leaders is a full-service real estate company, located in Carroll County. We work with buyers to find their perfect vacation, year-round or investment property.

We also offer an easy way to see all the info, plus video and photos, of any property on the market. Just text 85377 to EXIT. This also gives our sellers an edge, as their properties are easily accessible to any prospective buyer with a smartphone in hand.

Visit our office at 354 Rt 16B in Center Ossipee, the oldest operating real estate firm in Ossipee.

We serve all your New Hampshire real estate needs, from the North Conway area south to Portsmouth and west to Winnepesaukee!



Call today!  
(603) 539-9595 in Ossipee

## MUSEUMS AND EXHIBITS

### Weather Discovery Center

Route 16, North Conway • [www.mount-washington.org/education/center](http://www.mount-washington.org/education/center) • 356-2137

The Mount Washington Valley's own science museum, created by the Mount Washington Observatory and dedicated to helping people understand weather science and the region's role in understanding it better.

The Obs' main work it to conduct weather research on Mount Washington. It also has an exhibit "Extreme Mount Washington" on the Mountain's summit.

The interactive exhibits in the North Conway center are a great way for children (of all ages) to learn about the forces behind weather



Visitors to the Weather Discovery Center in North Conway can learn about weather on Mount Washington.

and climate.

### Mount Washington Valley Children's Museum

2936 White Mountain Highway, North Conway, [mwvchildrensmuseum.org](http://mwvchildrensmuseum.org) or (603) 356-2992

A play-based museum for young children.

### Remick Country Doctor and Farm Museum

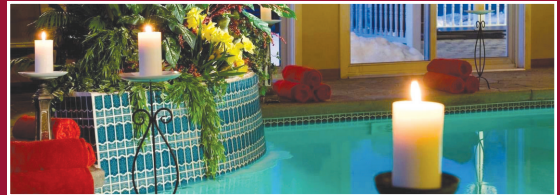
58 Cleveland Hill Rd., Tamworth ([www.remickmuseum.org](http://www.remickmuseum.org)) or 323-7591

See what it was once like to live on a rural New England farm and learn about rural medicine in the 19th

Call Direct!  
Best Rates  
Guaranteed!

## "World Class Relaxation & Romance!"

All Adult ~ Jacuzzi Suites ~ Fireplaces  
Fitness Center ~ Tropical Spa & more!



The Snowflake Inn.com

Jackson Village, NH | 603-383-8259



## Starlight Lodge

### —NORTH CONWAY—

Mt. Washington Valley's Newest Boutique Lodging Experience

*"Yesteryear with a Modern Twist!"*

Trip Advisor 5-Star Rated. Affordable. Convenient. Luxury.

Free WiFi/Cable | Luxury Bedding | Free in lobby coffee daily  
Flat/smart screen tvs | Firepit evenings | Scenic mountain views

Minutes to Mt. Cranmore, Attitash, Wildcat,  
short drive to Loon, Bretton Woods, Bear Peak.

Close to Apres Ski Valley Originals Pubs/Moat Mtn Brewery.  
GROOMED cross country ski trails on site/Whittaker Woods trails.

Shop nearby village boutiques and Settler's Green.

*Fall in Love with Starlight Lodge North Conway*

### "Winter Wonderland Special"

2 nights Sunday-Thursday gets 3rd night FREE.

PROUD SPONSOR AND HOST OF THE NORTH CONWAY  
CHOCOLATE FESTIVAL FEBRUARY 2019.

3537 White Mountain Highway North Conway, NH | 603-356-3551 | [starlightlodge-northconway.com](http://starlightlodge-northconway.com)



## SKIING

# Discounts

Savvy skiers and riders don't pay full retail on the slopes. Deals abound like multi-day tickets, online discounts, frequent flyer discount cards and multi-resort season passes. Discount days are a nice part of the mix.

Ski NH Executive Director Jessyca Keeler of Conway said, "Savvy shoppers know where to find deals and take advantage of them, and discount days are not only a great way to find a deal, but if you can ski that day, you're also going to enjoy a day that probably has no lift lines and not many people on the slopes with you."

Cranmore's online deals include a \$25 Game Day ticket on Feb. 3, a half price Valentine's Day pass Feb. 14 and a \$17 St. Patrick's Day ticket March 17. Ticket Rollback Day on Jan. 4 means \$10 lift tickets. Cranmore Saturday night tickets are \$29.

Attitash and Wildcat have discount days like \$30 non-peak Sunday Funday afternoon tickets. Kids age 17 and under pay \$17 on Youth Days, Jan. 6, and March 24. Go online for \$35 tickets on Game Day Feb. 3, limited \$17 St. Patrick's Day passes on March 15 and March 18, and limited April 1 tickets for \$11.

see next page

Whether for Breakfast,  
Lunch or Dinner stop  
into The Met for  
Good Food,  
Great Coffee &  
a memorable time  
with family and friends.



**the Met**®  
Coffee House &  
Fine Art Gallery

2680 White Mountain Hwy,  
North Conway Village • 603-356-2332

*Come visit us in our 2nd location:*  
**The Met at Settlers Green**  
2 Common Court - Bld H-50  
North Conway • 603-307-1169

## NORTH COUNTRY

# FIREWORKS

**Route 16 Tamworth, NH**

**(603) 323-8815**

Check with your local fire department if permissible fireworks are allowed in your area.



A skier tests the powder at Bretton Woods. Enjoy skiing for less during discount days and with online specials. (COURTESY PHOTO)

from preceding page

King Pine has many deals. \$5 Friday is Jan. 4, only in advance online. On Feb. 3's Big Game, buy a one-day ticket for the half-day rate. Valentine's Day is a two-fer day.

The Moonlight four-pack for \$66 that's good on Saturday nights and during vacation week for four people. The \$10 non-holiday Tuesday night ticket is on again, with \$10 rentals, \$10 terrain park lessons, \$10 tubing and a \$10 burger and beer in the Trail's End Tavern. Non-holiday Sunday Funday afternoon tickets are \$29 for adults and \$19 for juniors and seniors.

Two-for-one deals exist during non-holiday periods. Bretton Woods has them on Wednesdays. Cranmore's two-fer is different. On select dates online, ski two days for the price of one.

Bretton Woods' Friday and Saturday nights from 4 p.m. to 8 p.m. Powder and Pasta deal from late December through early March includes a pasta dinner and lift ticket for \$25. Nab a \$45 ticket on Dec. 25, pay \$69 online on MLK Monday Madness Jan. 21, 2019, score a \$53 ticket for the Big Game Feb. 3.

—Marty Basch

**LASER TAG • ARCADE**

**ÜberBlast**

**96 TOKENS \$20**

**2129 WHITE MTN HWY, RT 16,  
N. CONWAY, NH 03860**

**WWW.UBERBLAST.COM • 603-356-5655**

*No general admission charge. Pay as you play!*

# Goggles and More!

**Largest  
Selection  
Anywhere!  
Over 1,000  
Ski Goggles  
In Stock!**



**Sorel  
Winter  
Boots  
are all  
ON SALE!**



**We Sell Winter  
Outerwear for  
Men, Women &  
Kids, from The  
North Face &  
Patagonia.**



# Synergy

2706 White Mtn. Hwy., North Conway Village  
(directly across from Sun & Ski)

603-356-5039

[www.SynergySportswear.com](http://www.SynergySportswear.com)



## MOUNTAINS

# Ice climbing Ice Fest 2018

Climber Erik Eisele in Tuckerman Ravine. (JOE KLEMENTOVICH PHOTO)

The 26th annual Mount Washington Valley Ice Fest returns Feb. 1-3, with a weekend of climbing, classes, clinics and presentations that attracts climbers from around the world. They come to test equipment, watch slide shows and celebrate the sport and the people in it.

North Conway is one of North America's top ice-climbing destinations. Not only does it have a range of routes, from the hard climbs on Cathedral Ledge to the many flows in Crawford Notch State Park to the gullies of Huntington Ravine high on Mount Washington, but many are easily accessible without a long hike, making the area ideal for Ice Fest.

Clinics include Ice Climbing 101, Learn to Lead, steep waterfall ice climbing skills, crevasse rescue techniques, veterans climbing clinics and a one-day ascent of Mount Washington. Presenters will include Ralph Slawinski. To learn more, go to [mwv-icefest.com](http://mwv-icefest.com).



An Ice Fest participant attempts a climb during a clinic in 2016. (COURTESY PHOTO)





**Best Asian Restaurant**



**Best Asian Restaurant & Best Take-out**



**Best Pad Thai**



2010  
THROUGH  
2018

**1857 White Mtn. Hwy, No. Conway**  
**at Willow Commons next to D'Angelo's • TEL: 603-356-7624**  
**Hours: Tues-Sat Lunch & Dinner from 11:30am. Sun & Mon Dinner only from 4pm**

## 華廚 CHINA CHIEF



FULL LIQUOR

OVER 100 SEATS

For Orders To Go, Please Call  
**603-356-3788 or 603-356-7327**  
[www.chinachefnh.com](http://www.chinachefnh.com)

**2025 White Mtn Hwy, Rt. 16, No. Conway, NH 03860**  
*(Across From The Christmas Loft)*

OPEN HOURS:

Sun. to Thurs.: 11:30am to 9:30pm • Fri. & Sat.: 11:30am to 10:30pm  
 Closed Monday during off-season









# THE PROFILE GROUP

**3 in 1**  
Sales and Service  
that can't be beat!

**New & Preowned**

## PROFILE MOTORS

[www.profilemotors.com](http://www.profilemotors.com)

**603-447-3361**

**Conway, NH • Rte 16 & 112**  
(Kancamagus Hwy)

Sales Hours: Mon-Fri 8am-6:30pm, Sat 8am-4pm, Sun 11am-3pm

Service & Parts Hours: Mon-Fri 7:30 am-5pm; Sat 8am-1pm

**Buick Cars & SUV's**  
**GMC Trucks & SUV's**



## PROFILE SUBARU

[www.profilesubaru.com](http://www.profilesubaru.com)

**603-447-3845 - 1.800.NEW.AUTO**  
**Rte 16, Conway, NH**

**BRZ (Impreza) WRX/Legacy**  
**Forester/XV Crosstrek**  
**XV Crosstrek Hybrid/Outback**



## PROFILE POWERSPORTS

[www.profilepowersports.com](http://www.profilepowersports.com)

**603-447-5855**

**Rte 16, Conway, NH**  
**Just South of Conway Village**

**Snowmobiles/ATV's/Tractors/**  
**Motorcycles/Power Equipment**





## SNOWMOBILING

# Snowmobiles Open the winter world

Snowmobiling opens up a world of winter fun for everyone, whether you're an enthusiast with your own machine or you rent from a local outfitter. Terry MacGillivray of Northeast Snowmobile Rentals and Peter Gagne of Northern Extremes agree that snowmobiling is a sport the family can enjoy.

"We get people to places in winter that they otherwise would not have a chance to get to physically," said MacGillivray, who has locations in Gorham, N.H., and in Fryeburg and Bethel, Maine. "A lot of people think snowmobiling is for motorheads who want to spin their tracks and go fast. But it's really about getting out to scenic places to enjoy the view, shut off the machine, and enjoy the quiet of the woods. We take people to the top of Black Cap (behind Cranmore in North Conway), which would otherwise take a long time, and they would never get there," said MacGillivray.

Added Gagne, whose company has locations in Bartlett and Bretton Woods: "It's a great opportunity to explore the outdoors. It's an alternative to skiing for folks who might not normally venture outdoors in winter.

see next page



**GREEN MOUNTAIN**  
Rifle Barrel Co. Inc.

[www.gmriflebarrel.com](http://www.gmriflebarrel.com)



First Quality Barrels for AR, AK,  
10-22 Rifles and more.  
Limited Runs and Fully Functional  
"Blemished Barrels".

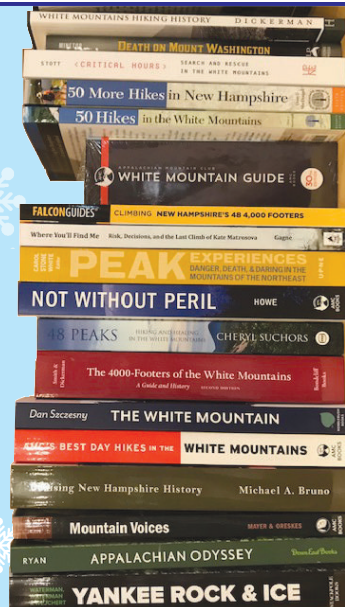
GMRB is a Gold Level  
Cases Knife Dealer



Come visit our Factory Store at  
153 West Main St, Conway, NH

603-447-1095 Mon.-Fri. 8am-5pm

Your best  
resource  
for local  
books and  
so much  
more!



**White Birch Books**



2568 Main Street, North Conway  
356-3200  
[www.whitebirchbooks.com](http://www.whitebirchbooks.com)



## RESOURCES

- Northeast Snowmobile Rentals of Fryeburg, Bethel and Gorham: (800) 458-1838 or [northeast-snowmobile.com](http://northeast-snowmobile.com)
- Northern Extremes of Bartlett and Bretton Woods: (603) 374-6000 or [northernextremesnowmobiling.com](http://northernextremesnowmobiling.com)
- Profile Powersports in Albany offers sales: (603) 447-5855

- N.H. Snowmobile Association: (603) 273-0220 or [nhsa.com](http://nhsa.com)
- N.H. Fish and Game: (603) 271-3129 or [wildlife.state.nh.us/OHRV/ohrv.htm](http://wildlife.state.nh.us/OHRV/ohrv.htm)
- N.H. Bureau of Land and Trails, which updates state snowmobile conditions: (603) 271-3254 or [nhstateparks.org/experience/snowmobiling](http://nhstateparks.org/experience/snowmobiling).

from preceding page

Some like the feel of the power in the machine. Most of our customers are non-skiers, families who want to go out and see the wilderness." Northern Extremes's offerings include guided Sawyer River to Bear Notch sunset dinner tours in collaboration with Cabin Fever Restaurant of Bartlett.

With operations in different locations, Gagne and MacGillivray cover their bets when it comes to weather and snow conditions. "North Conway does not always have the snow, but Bear Notch is a snowbelt," Gagne said.

— Tom Eastman



## CLUBS

Local snowmobile clubs are the backbone of the local snowmobile industry. The clubs work with the state Bureau of Trails, under the Division of Parks and Recreation, as well as N.H. Fish and Game, which assists with snowmobile safety courses and oversees registrations.

The Bureau of Trails manages 7,422 miles of snowmobile trails. Clubs

volunteers do most of the trail maintenance and grooming.

Snowmobiles must be registered with the state, but there are no additional trail user fees.

Local clubs include:

- Mountain Meadow Riders of Conway: (603) 447-2343 or [mmrsc.net](http://mmrsc.net)
- Scrub Oaks Scramblers Snowmobile Club in Madison: [sosclub@sossc.com](mailto:sosclub@sossc.com) or [sossc.com](http://sossc.com).

# VALLEY ARTISANS & VINTAGE MARKET



**Soon to  
be your  
favorite shop!**

**Antique,  
Vintage and  
Custom-  
Painted  
Furniture**

**Home Decor**

**Upholstery**

**Jewelry**

**Open  
7 Days**

**328 White Mt. Highway, Conway**




# hamarena



**The Coolest Place in the Valley!**

Public Skating • Stick & Puck  
 Birthday Party Packages • Private Rentals  
 Hockey Tournaments, Camps & Clinics  
 Skating Club Hours & Lessons  
 Learn to Curl • Youth Hockey  
 Adult Men's, Women's & Coed Leagues  
 Pro Shop • Cafe • Broomball & More!!





FOR THE MOST UP-TO-DATE SCHEDULE GO TO  
**HAMARENA.COM** or **CALL 603.447.5886**  
 87 West Main St., Conway NH 03818



# Family fun and adventure Off-slope activities

CONWAY — You don't have to be a skier to have fun in Mount Washington Valley in the winter. There are plenty of other activities to enjoy before, after or instead of hitting the slopes.

**Adventure parks:** Cranmore Mountain Resort (603-356-5543) offers thrilling downhill rides on its Mountain Coaster on a half-mile track where you control the speed. The two-person cars are perfect for parents and kids. The Mountain Adventure Park also features a Giant Swing, Soaring Eagle Zipline and ropes course.

Bretton Woods Mountain Resort (603-278-3320) has a 524-square-foot indoor rock climbing wall in the Bretton Woods Base Lodge. The 30-foot climbing wall includes a variety of routes on modular hand holds and artificial rock. For those who like to stay closer to the ground, the 300-square-foot bouldering cave makes for a fun afternoon.

Bretton Woods also offers a thrilling zipline tour from high on the slopes,

descending over 1,000 feet of elevation. The ride features a dual-cable construction (you slide below two separate cables, instead of just one),



coated cables (to make for a quiet, more natural flight) and platforms.

King Pine/Purity Spring Resort (603-367-8896) in Madison is offering ice skating, sleigh rides, snowshoeing and cross-country skiing.

**Brewery tours:** Enjoy a tour and tasting at Tuckerman Brewing Co. (603-447-5400) in Conway Village from noon to 5 p.m. Visit the pub at Sap House Meadery (603-539-1672) at 6 Folsom Road in Center Ossipee and learn about how this sweet nectar is made plus try a sample. Moat Mountain Brewing Co. (603-356-6381) of North Conway and Hobbs Tavern (603-539-2000) on Route 16 in West Ossipee are also great options for enjoying tastings of locally made craft beer. White Mountain Winery (603-356-9463) of Main Street in North Conway offers custom-made wines.

**Dog sled rides:** Can you think of a better way to take in the beauty of the White Mountains than on the back of

see next page



**Tramway Artisans**  
70,000 Gifts!

*Tramway Marketplace*

Mention  
this ad and  
receive  
**10% OFF**  
your  
purchase

NH Souvenirs, Gifts, T-Shirts,  
Hoodies, Women's Fashion,  
NH Art & More!  
Greeting Cards for Every  
Special Occasion!

**603-539-5700**

2336 Rt. 16, West Ossipee (Next to McDonald's)



*Homer's*  
**Appliance Service**  
and  
**Clear Vent**  
*The Dryer Vent Cleaning Specialist*

- Service all major household appliances
- Offer appliance installation
- Provide service to the Mount Washington Valley & surrounding areas.

PO Box 19, Jackson, NH 03846 • kevinpratt74@yahoo.com

**603-383-8033**



Skaters in Schouler Park in North Conway. (JAMIE GEMMITI PHOTO)

from preceding page

a dogsled? No snow? No worries. The Muddy Paw Sled Dog Kennel (603-545-4533) in Jefferson has specially fitted sleds with wheels, making this adventure available year-round. Bretton Woods Omni Mount Washington Hotel (603-278-1000) also offers adventures by Muddy Paw Sled Dog Kennels. You can also view two days of sled dog racing, Jan. 27-28, at the Tamworth Sled Dog Races on Lake Chocorua in Tamworth. Check the New England Sled Dog Club webpage at nesdc.org for more information.

**Ice skating:** Indoor skating available at Conway Village's Ham Arena (603-447-5886) year-round. You'll also find skating under the shelter available at King Pine/Purity Spring Resort (603-367-8896) and in Schouler Park in the center of North Conway (depending on cold weather!) Skate rentals for the latter are available through Sun & Ski Sports (603-356-9411) in North Conway. Ice skating and rentals are offered at the enchanted Victorian Emerald Pond at Nestlenook (603-383-7101) in Jackson, conditions permitting.

see next page





Enjoy a day exploring the White Mountains of New Hampshire with family and friends!

We offer Guided Tours and Self-Guided Rentals for all ages and abilities.

Check out our Trip Advisor reviews! 

**FAMILY SNOWMOBILING PACKAGES**  
**Two double snowmobiles for 2 hours: \$190\***  
 Each additional snowmobile \$95. Passengers must be 18 and under

**BEAR NOTCH SNOWMOBILE RENTALS**  
 (603) 374-6000 • 1328 Route 302, Bartlett

**MT WASHINGTON SNOWMOBILE RENTALS**  
 (603) 986-5406 • 2267 Main St, Bretton Woods

RESERVE NOW  
**NXTsnow.com**



from preceding page

**Tubing:** No special equipment or skills necessary here. Skiers, riders and non-skiers alike will experience the thrill of the downhill run at Mount Washington Valley's tubing parks. Facilities include Cranmore Mountain Resort's Tubing Park (603-356-5543), Purity Spring Resort/King Pine (603-367-8896), Bretton Woods Mountain Resort (603-278-3320 or 603-278-1000) and the walk-up tubing hill at Great Glen Trails (603-466-2333).

**Indoor family fun and fitness:** There's no shortage of fun ways to spend an indoor winter's day. Saco Valley Sports Center (207-935-3777) in Fryeburg, Maine, offers candlepin bowling, pool tables, an arcade, and simulator golf courses. UberBlast Family Entertainment Center (603-356-5655) of North Conway offers a indoor and outdoor fun year-round — be sure to check out the arcade. Birthday parties and camp groups are welcome. Hartmann Model Railroad Museum (603-356-9922) in Intervale has a great model train layout to delight train buffs of all ages.

see next page



Tubing at King Pine Ski Area. (JAMIE GEMMITI PHOTO)



#1 Entertainment  
Venue and  
Billiards  
**OPEN DAILY**  
4:30PM

603-356-7807 • [www.theclub550.com](http://www.theclub550.com)  
ON THE STRIP IN NORTH CONWAY 

**WEEKLY HAPPENINGS**  
Mon: Unwinder Party: 1/2 price pool, .50 wings, Touchtunes Juke box  
Tues: LIVE Entertainment - Bobby Freedom & Friends  
7-11, bring your instruments & DJ 11-close  
Weds: \$5 drink specials • Karaoke  
Thurs: LADIES NIGHT- Ladies FREE pool all night, 2 for 1 drink specials  
from 5-7, Karaoke & DJ, 50¢ wings  
Fri: Luck of Draw Dart 7pm, FREE pool til 9, DJ 9-close  
Sat: FREE pool til 9, DJ 9-close  
Sun: Kick Back Sundays - 1/2 price pool all night,  
2 for 1 drinks specials 5-7, Karaoke & DJ



Smart,  
Casual Attire  
please

Happy Hour - 4:30-6:30  
\$4 Well Drinks, \$2.75 Domestic Beer \$2.75, PBR \$2  
— COMPLETELY SMOKE FREE —

**ESCAPE ROOMS**



**MYSTERY** **NH**

FIND THE CLUES. SOLVE THE PUZZLES.  
CRACK THE CODES. ESCAPE THE ROOM!

[www.MysteryNH.com](http://www.MysteryNH.com)  
32 Mountain Valley Blvd, North Conway  
In the Mountain Valley Mall, next to Cinema 7

from preceding page

Many of the larger local hotels have gyms, plus Cranmore Fitness Center (603-356-6301) and Fryeburg (207-935-4299), A Better Body in Eaton (603-447-1824), Integrity 24-Hour North Conway Fitness (603-733-5572); Mountain Center Physical Therapy of Glen, Conway and Fryeburg (603-447-2533); White Mountain Aquatic Center (603-447-1824) and Ginger Rober Restorative Health and Fitness (603-986-5037), the Technogym at the Snowflake Inn (603-383-8259) and the new North Conway Community Center (603-356-2096), to name a few.

Check with the Mount Washington Valley Chamber of Commerce at (603-356-5701 or [www.mtwashingtonvalley.org](http://www.mtwashingtonvalley.org) for a full listing.

Cranmore Fitness is open daily with a full line-up of classes, programs and tennis clinics. Day passes are available for purchase along with month to month and annual memberships. Cranmore fitness has a full cardio and weight room, functional training area, Les Mills group exercise classes, yoga, TRX Suspension



#### **Kahuna Laguna Water Park.**

Training, spin, personal training, two indoor tennis courts and scheduled tennis clinics for all ages and abilities. A full schedule of classes and pricing information can be found online at [Cranmorefitness.com](http://Cranmorefitness.com).

**Indoor water park:** Looking for an indoor swimming adventure? The Kahuna Laguna Water Park (603-356-5411) offers ton of water fun at the Red Jacket Mountain View. The cost is \$50 per person, ages 3 and up. The hours are noon to 8 p.m. on a first-come, first-served basis.

**Museums:** When the weather outside is frightful, come inside to learn more about it at the Mount

Washington Observatory's Weather Discovery Center (603-356-2137) in North Conway. It offers interactive displays for budding meteorologists of all ages. For the younger set, the Mount Washington Valley Children's Museum (603-356-2992) offers an educational play setting in North Conway Village. From dress-up in the drama center to creative building in the Lego Room, kids from infants to 8-year-olds will find plenty to do.

**Spas:** The valley is home to several salons and spas, including the Inn at Thorn Hill (603-383-4242), Christmas Farm Inn and Spa (603-383-4313), Omni Mount Washington Resort (603-278-1000), Tower Spa at the Mountain View Grand (877-935-0356), The White Mountain Hotel, Advanced Skin Care Center and Spa (603-356-7070), Pleasant Image Family Salon & Day Spa (603-356-3437), the Cutoff (603-356-6276) and the Root Cellar (603-356-6995), all in North Conway. Check with the Mt. Washington Valley Chamber of Commerce at (603-356-5701 or go to [mtwashingtonvalley.org](http://mtwashingtonvalley.org) for a full listing.



**Hot & Cold Subs**  
**Piping Hot Green Mountain Coffee**  
**Fresh Made Breakfast Sandwiches**  
**In-store Baked Muffins**  
**Danish Cinnamon Rolls & Cookies**



**Indoor Dining with cable TV & Free Wifi!**

**Try our hot Angus Beef Chili and NE Clam Chowder**



**Try Our Delicious Piping Hot Pizzas including THE MOUNTAIN MAN PIZZA 6 Plus Pounds of Meat Topping Deliciousness.**



**Visit [communitymarketanddeli.com](http://communitymarketanddeli.com) for Daily (Mon-Fri) & Weekly Specials!**

**1 mile south on Rt. 113 • Madison • 367-4784**  
**Mon-Sat 5am-9pm • Sun 6am-9pm.**



## **LIKE TO TRAVEL?**

**• Pure Points • Pure Bliss...**

**Located at the Snowflake Inn!**

### **603-383-6540**



## SKIING

# Deals for beginners Learn to Ski Month

CONWAY — Many New Hampshire ski areas celebrate “Learn to Ski and Snowboard” month in January by offering a \$39 lift, lesson and rentals beginner package for downhill skiing and riding, and a \$19 trail pass, lesson and rentals beginner package at cross-country ski areas.

Taking a lesson your first time on skis or a snowboard can make all the difference in the world in terms of having a great experience, and Ski NH’s Learn to Ski



Children at the King Pine ski school. (COURTESY PHOTO)

and Snowboard Month special is great and affordable way to try a new sport.

Most ski areas in New Hampshire participate, but each resort’s availability and restrictions for this program varies, so customers should check with the resort of your choice for availability and additional information.

This program is designed for Level 1 students: that is, people who have never been on skis or snowboards before.



**BEV & MARKET**

*Specializing in  
Craft Beer & Wine  
Kegs • Groceries • Gifts*

**OPEN DAILY**  
Sun-Thur 8a-8p  
Fri & Sat 8a-9p

**603-356-5084**  
10 Hurricane Mountain Rd.  
Intervale, NH 03845

*The Hoppiest Beer Store in the Valley!*



**SAWYER RIVER  
TRADING CO.**

Fine Cutlery • Sport Knives  
Quality Cookware • Chef’s Attire  
Kitchen Accessories • Knife Sharpening

**CELEBRATING 20 YEARS!**  
[SawyerRiver.com](http://SawyerRiver.com)

**SPORT  
KNIVES**  
**LEATHERMAN**  
**BUCK**  
**SWISS ARMY**  
**GERBER**  
**& MORE**

Special Orders &  
Shipping Available



**BEST “LITTLE” SHOP IN TOWN!**  
Norcross Place • North Conway Village • 356-4155



Fat bike riders take to the trails on the Marshall Conservation Area in Conway. (TERRY LEAVITT PHOTO)

# Rolling through winter Fat bikes

While many local outdoor recreation enthusiasts trade in bikes for skis at this time of year, a growing number of people, aided by the latest evolution of the bicycle — fat bikes — are opting to keep two wheels on the trails throughout the winter.

Three local ski touring centers, Mount Washington Valley Ski Touring, Great Glen and Bretton Woods have added fat biking on limited trails. Nordic ski areas require trail passes for fat biking and offer rentals so you can try out the sport.

Many bikers seek out mountain bike trails like those in the trail system being developed by biking clubs on in the Marshall Conservation Area off West Side Road in Conway. There are now several miles of trails there, and club volunteers are working to groom some of them for winter biking.

Among the shops offering sales of fat bikes are the Bike Shop (603-356-6089) and Stan & Dan's Sports (603-356-6997). Stan & Dan's also offers rentals, and shuttle service to trailheads on an as-needed basis.

**Challenge Yourself & Others**



**Featuring short & ultra long trail running events in NH's scenic White Mountains.**



Visit [rockhopperraces.com](http://rockhopperraces.com) for schedule and registration. Mention **conwaysun10** and receive **10% Off** race registration.



**GIFT EMPORIUM**  
Local & New England Products



Shop Local at one of over 20 Local Shops!

**An Eclectic Assortment of Goodies Including:**

- Melissa & Doug Puzzles • Gifts • Puzzles
- Home Accessories • Candles • Soaps
- Cards • Kitchen Gadgets • Candy
- Plush Toys • Local Photography
- Jackson Sweatshirts & T-Shirts
- Large Selection of Mini World Fairy Garden Items • Garden Spinners
- Hot Air Balloons and Much More!

**New Products Arriving Weekly!**

Next to the covered bridge in Jackson Village  
603-383-6565 • [www.flossiesgeneralstore.com](http://www.flossiesgeneralstore.com)  
Open Thursday-Monday





- Chef owned & operated
- Live Music Every Thursday & Saturday Nights and Apres Ski on Wednesdays.
- Friday Fried Haddock Dinner
- Saturday Our Famous Prime Rib
- Sunday Roast Turkey Dinner



- Vegetarian Options and Gluten Free Menu
- Full Children's Menu with a Free Dessert
- Amazing Daily Specials

3465 White Mountain Hwy, North Conway  
603-733-5955 • [McGrathsTavernNH.com](http://McGrathsTavernNH.com)



Hours: Monday-Friday at 3:30;  
Saturday, Sunday &  
Vacation Weeks at Noon

Awarded  
Trip Advisor  
Certificate  
of Excellence



"Mount Chocorua," by Erik Koeppel. (COURTESY PHOTO)

## ART

# Art Galleries

There are many galleries in the Mount Washington Valley. They include:

**The Cassidy Gallery** at Jackson (662-2074; [cassidygallery.com](http://cassidygallery.com)).

**Ellis River Art Studios and Group 8 Gallery:** Jackson (Group8Gallery.com).

**Jackson Art Studio and Gallery** ([jacksonartnh.com](http://jacksonartnh.com)).

**Jackson Historical Society and White Mountain Museum of Art.** ([jacksonhistory.org](http://jacksonhistory.org)).

**League of N.H. Craftsmen,** 2526 White Mountain Highway, Route 16,

North Conway (356-2441; [nhcraftsmen.org](http://nhcraftsmen.org)).

**Mount Washington Valley Arts Association;** 16 Norcross Circle, North Conway (356-2787); [mwvarts.org](http://mwvarts.org).

**White Mountain Photo Gallery,** 95 Main Street, Jackson Village (374-6050; [whitemountainphoto.com](http://whitemountainphoto.com)).

**Palmina F. and Stephen S. Pace Galleries of Art, Fryeburg Academy,** 18 Bradley Street, Fryeburg, Maine (207-935-9232; [fryeburgacademy.org](http://fryeburgacademy.org)).

TRY ONE OF OUR  
DELICIOUS, MOUTH-WATERING

# GrillBurgers!



Your Hosts, The Filip Family Since 1968!



1561 White Mtn.  
Hwy.,  
North Conway  
356-5555



# Nail Envy

Walk Ins &  
Appointments

603-356-4460

[www.nailenvyspanh.com](http://www.nailenvyspanh.com)

North Conway Village  
next to TD bank



Hours: Mon-Sat 9:30am-7:30pm | Sunday 10am-5pm

Fireplace Martini Lounge & Casual Dining  
Homemade wood-fired bread and pizza meet seasonal salads,  
pit-smoked prime rib, Maine seafood and Manor-made pasta.

The  
*Wild*  
Rose

RESTAURANT at Stonehurst Manor



3351 White Mountain Highway, North Conway, NH 03860  
603-356-3113 • [TheWildRoseRestaurant.com](http://TheWildRoseRestaurant.com)



## COVERED BRIDGES

# Spanning history Coverd bridges



There are various theories about why bridges were first roofed. Some say that the bridges' heavy timbers lasted longer when protected from the elements. In earlier days, young couples soon took advantage of the privacy the bridge allowed, and as a result, covered bridges came to be known as "kissing bridges."

Still preserved, many of the valley's covered bridges remain as working bridges, and a myriad of visitors to valley come just to tour the bridges. Here is a sampling of some of the area's favorite covered bridges.

**Albany Covered Bridge:** Six miles west of Conway and north of the Kancamagus Highway. Sometimes known as the "Lovers Bridge," this 120-foot bridge over the Swift River was built in 1858, the second bridge on this spot. With numerous trails and the Swift River nearby, it is a popular

stop for tourists (closed to traffic in winter, but accessible from parking area off Kancamagus Highway).

**Conway Covered Bridges:** Conway has two covered bridges, located close together. Turn west at the light in Conway (at the junction of Routes 16 and 153). Bear right at the fork to find the bridge over the Saco River. This "two-span" covered bridge, built in 1890, is 235 feet long. It is open to traffic. Bear left at the fork to find the 130-foot covered bridge spanning the Swift River. Restored for foot traffic, it is not open to cars but has a pulloff and picnic tables.

**Bartlett Covered Bridge:** 4.5 miles east of Bartlett Village on Route 302 in Glen. This 167-foot long span has been closed to traffic since 1939. From time to time it has been home to a gift shop, which remains open today.

**Jackson's "Honeymoon" bridge:** This often photographed covered bridge is located on Route 16A, just off Route 16 at the entrance to Jackson Village. Built in 1876, spans 121 feet across the Ellis River.



NORTH CONWAY  
**HOUSE OF JERKY**

PREMIUM QUALITY JERKY

BEEF | TURKEY  
WILD BOAR | VENISON  
SALMON | BUFFALO | KANGAROO  
CAMEL | ALLIGATOR | PORK  
PINEAPPLES | EXOTICS



- NO PRESERVATIVES
- NO ARTIFICIAL COLORS
- NO NITRITES, NO MSG
- NO FLAVOR ENHANCERS
- HIGH PROTEIN – LOW FAT
- GRADE A, USDA INSPECTED MEATS




**[www.northconwayhouseofjerky.com](http://www.northconwayhouseofjerky.com)**  
 North Conway Village, next door to North Conway Olive Oil  
 At Settlers Green in the North Conway Olive Oil Store, D46  
**603-730-5515**

**International Mountain Climbing School, Inc.**

**"It is time  
to climb!"**



**Beginner to Advanced**

- Rock Climbing
- International Expeditions
- Ice Climbing
- Mt. Washington Ascents
- Family Climbs
- Mountaineering Courses
- Summer Camps
- Climbing Since 1974

**26th Annual  
Mt. Washington  
Valley Ice Fest  
Feb. 1-3, 2019!**

**[www.mwv-icefest.com](http://www.mwv-icefest.com)**

**2733 White Mountain Highway (Main St)  
North Conway Village • (603) 356 7064**  
[guides@ime-usa.com](mailto:guides@ime-usa.com)   [www.ime-usa.com](http://www.ime-usa.com)





# We'll Get You There.

Your business has needs. We have the resources.



## Mt. Washington Valley Economic Council

**At Mount Washington Valley Economic Council, we have all the tools you need to build a successful business, such as:**

Technical Assistance for new and budding businesses in business plan development, strategic planning and financing.

Micro-Enterprise Program offers help for low- and moderate-income entrepreneurs.

Revolving Loan Fund can give you a headstart on your startup or business expansion.

For more information and opportunities, visit [www.mwvec.com](http://www.mwvec.com)



# Resources to help Plan your trip

## VISITOR INFORMATION

### North Conway Village

(603) 356-5947  
2617 White Mountain Hwy  
North Conway  
mtwashingtonvalley.org

### Scenic Vista

(603) 356-2769  
3654 White Mountain Hwy • Intervale  
visithn.gov

### Saco River Ranger Station

(603) 745-3816  
33 Kancamagus Hwy • Conway  
fs.usda.gov/whitemountain

### Conway Village

(603) 447-2639  
250 Main St. • Conway

## MEDICAL

### Memorial Hospital

(603) 356-5461  
3073 White Mountain Hwy  
North Conway  
memorialhospitalnh.org

### Huggins Hospital

(603) 569-7500  
240 S. Main St. • Wolfeboro  
hugginshospital.org

### Saco River Medical Group

(603) 447-3500 • (603) 383-3005  
7 Greenwood Ave. • Conway  
15 US Route 302 • Glen  
Sacodocs.com

### White Mountain Community

Health Center • (603) 447-8900  
298 White Mountain Hwy • Conway  
whitemountainhealth.org

## GROCERY STORES

### Hannaford Supermarket

(603) 356-6341  
32 Mountain Valley Blvd • North Conway

### Hannaford Supermarket

(603) 539-7531  
891 NH 16 • Ossipee

### Shaw's Supermarket

(603) 356-5471  
1150 Eastman Road  
North Conway  
shaw.com

### Grant's Shop'n Save

(603) 383-4282  
9 US Route 302 • Glen  
grantsshopnsave.com

### Conway Shur Fine

(603) 447-5781  
234 White Mountain Hwy  
Conway

### Valuland Food Store

(603) 539-4416  
Indian Mound, 280 NH 16B  
Center Ossipee

### Walmart Supercenter

(603) 356-0130  
46 North-South Road  
North Conway

## LIBRARIES

### North Conway Public Library

(603) 356-2961  
2719 Main St. • North Conway  
northconwaylibrary.com

### Conway Public Library

(603) 447-5552  
15 Greenwood Ave. • Conway  
conwaypubliclibrary.org

### Bartlett Public Library

(603) 374-2755  
1313 US-302 • Bartlett  
bartlettpubliclibrary.org

### Jackson Public Library

(603) 383-9731  
52 Main St • Jackson  
jacksonlibrary.org

### Madison Public Library

(603) 367-8545  
1885 Village Rd • Madison  
madisonlibrary-nh.org

### Freedom Public Library

(603) 539-5176  
38 Old Portland Rd • Freedom  
freedompubliclibrary.org

### Chocorua Public Library

(603) 323-8610  
25 Deer Hill Rd • Chocorua  
chocorualibrary.org

### Cook Memorial Library

(603) 323-8510  
93 Main St • Tamworth  
tamworthlibrary.org

### Ossipee Public Library

(603) 539-6390  
74 Main St • Center Ossipee  
ossipee.lib.nh.us

## LIQUOR STORES

*New Hampshire State Liquor and Wine Outlet Stores do not sell beer, which can be found at convenience stores or supermarkets in the state.*

### NH Liquor & Wine Outlet #23

(603) 447-2782  
234 White Mountain Hwy • Conway

### NH Liquor & Wine Outlet #54

(603) 383-9000  
65 US 302 • Glen

### Discount Beverages

#### Plus Cigarettes

(603) 356-8844  
1130 Eastman Rd • North Conway

### Vista Bev & Market

(603) 356-5084  
10 Hurricane Mountain Rd • Intervale

## MOVIE THEATERS

### Mt. Valley Mall Theatre

(603) 356-6410  
Route 16 • North Conway

### Magic Lantern

(207) 647-9326  
9 Depot St • Bridgton, Maine

## DIRECTORY

### POLICE STATIONS

#### Conway Police Station

(603) 356-5715  
35 East Conway Rd • Center Conway

#### NH State Police Troop E

(603) 323-3333  
1864 White Mtn Hwy • Tamworth

#### Carroll County Sheriff

(603) 539-2284  
95 Water Village Rd • Ossipee

#### Ossipee Police Station

(603) 539-2011  
7 Dore St, Center Ossipee

#### Tamworth Police Station

(603) 323-8581  
100 Tamworth Rd, Tamworth

#### Madison Police Station

(603) 367-8334  
1923 Village Rd • Madison

#### Freedom Police Station

(603) 539-8268  
218 Village Rd • Freedom

#### Fryeburg Police Station

(207) 935-3323  
89 Bridgton Rd • Fryeburg, Maine

#### Bartlett Police Station

(603) 356-5868  
56 Town Hall Rd • Bartlett

#### Jackson Police Station

(603) 383-9292  
54 Main St • Jackson

### MAILING

#### North Conway Post Office

78 Grove St. • North Conway

#### Conway Post Office

175 Main St. • Conway

#### The UPS Store

(603) 356-4881  
1857 White Mountain Hwy  
North Conway

### LAUNDROMATS

#### Seavey Street Laundromat

60 Seavey St. • North Conway

#### Jem Coin Laundry

73 Main St. • Conway

#### Acorn Wash & Dry

175 Main St. • Conway

### COFFEE SHOPS

#### Dunkin Donuts

Conway: (603) 452-5311  
402 W. Main St. • Conway  
North Conway: (603) 356-5676  
1946 White Mountain Hwy  
North Conway  
Glen: (603) 374-9088  
539 US 302 • Glen

#### Starbucks

(603) 356-6860  
1456 White Mountain Hwy  
North Conway

#### The Met Coffee House

(603) 356-2332  
2680 White Mountain Hwy  
North Conway

#### Aroma Joe's Coffee

(603) 662-0491  
Shaw's Way • North Conway  
2315 White Mountain Hwy  
West Ossipee

#### Frontside Coffee Roasters

(603) 356-3603  
2697 White Mountain Hwy  
North Conway



**SUNSET  
MATTRESS FACTORY**  
*Better Nights – Make – Better Days!*  
Custom Made Mattresses & Box Springs Since 1953  
Specializing in Standard, Antique & Custom RV Sizes  
85 County Farm Rd., Ossipee, NH • 603-539-6256  
www.sunsetmattressfactory.com



**White Mountain  
PHOTO GALLERY**  
95 Main St., Jackson, NH • 603-374-6050  
whitemountainphoto.com

**FAMILY STYLE TIMESHARE  
CONDO RESORT**

*Nights or Weekly  
Rentals!  
Or Save \$\$\$ and  
Become An Owner!!*

Central to all North Conway  
Attractions!!  
603-356-6335  
info@cathedralledgesort.com  
www.cathedralledgesort.com



**RENTALS**

Cars, Vans, Suv's, Pick Up Trucks, Moving Trucks, too!

**Hertz** Agent for Hertz Car Rental  
and Penske Truck Rental

**PENSKE**

**VALLEY AUTO**  
Glen Warehouse  
304 US RT 302, Glen, NH  
603-986-5936  
Open daily,  
Closed on Sundays

**AAA Discounts**



## HORSEBACK RIDING

# Horseback and Sleigh rides

Several local stables offer the classic experience of riding fields and wooded trails in a horse-driven sleigh or wagon. Some also offer horseback rides.

### Farm by the River B & B with Stables

North Conway • (603) 356-2694 for inn • (603) 356-6640 for stables • [farmbytheriver.com](http://farmbytheriver.com)

This is an award winning, owner-operated stables and bed and breakfast inn. The horses are selected for soundness and good temperament and are cared for

and trained by experienced wranglers all year round.

### Nestlenook Farm

Jackson • (603) 383-7101  
Nestlenook Farm Wagon in Jackson has sleighs equipped with runners and wheels, depending on the terrain.

### The Stables at Bretton Woods

(603) 278-8989 • [www.omnihotels.com](http://www.omnihotels.com)

Just a few steps from the Omni Mount Washington Resort and Bretton Arms Inn, the Stables at Bretton



Woods offer equestrian activities for all levels. Daily group and individual rides, interactive programs, carriage rides. Reservations are encouraged.

### Purity Spring Resort

Madison • (800) 373-3754 • [kingpine.com](http://kingpine.com)  
Purity Spring Resort

offers horse-drawn sleigh rides, 15 to 20 minutes long, between 11 a.m. and 1 p.m. Saturdays, Dec. 29-Feb. 23, as well as Sunday, Jan. 20; Tuesday, Feb. 19 and Thursday, Feb. 21. Reservations are recommended. Warm yourself by an outdoor fire before and after your ride.

Premium Cigars ~ Cocktails  
Friends ~ Entertainment  
Relaxation ~ Tomfoolery

# Cigar

## SHENANIGANS

10% discount for First Responders & Veterans.  
20% discount for Active Military Members.

1903 WHITE MOUNTAIN HIGHWAY  
NORTH CONWAY, NH 03860  
[www.CigarShenanigans.com](http://www.CigarShenanigans.com)

603.307.1036

Facebook.com/CigarShenanigans



THE LUCIANO FAMILY SINCE 1967  
**Merlino's**  
Family Steakhouse  
Specializing in Chef's Signature Angus Beef

REWARDS & LOYALTY PROGRAM  
Best Program in the Valley!  
Earn 10% Discount on EVERY VISIT!

Taste the Difference!  
Great Kids' Menu!

356-6006

[www.merlinossteakhouse.com](http://www.merlinossteakhouse.com)



A small sampling of our menu includes:

- Italian Specialties
- Fresh Maine Lobster & Seafood
- Prime Rib
- T-Bone Steak
- BBQ Baby Back Ribs
- Filet Mignon

**SPORTS FANS!! 4 Big Screen TVs in our Lounge.**

**Drink & Appetizer Specials Every Day**

**Walk to Shopping and Hotels!**

**Sunday Brunch Menu 10am-2pm**

Serving Lunch & Dinner from 11am Daily  
Route 16, North Conway



# New Hampshire

by the numbers

#1

of the thirteen original colonies, New Hampshire was the first to declare independence from England, six months before the Declaration of



Independence was signed. As leaders in the Revolutionary cause, New Hampshire delegates also received the honor of being the first to vote for the Declaration of Independence on July 4, 1776.

96%

of employers in New Hampshire are small business owners.

48

There are 48 mountains in New Hampshire with an elevation of 4,000 feet or higher. The Appalachian Mountain Club hosts a 4k Footer Club for

576

people who climb all 48 peaks at least once. Even more



impressive, however, is hiking "The Grid". That's hiking each of the 48 mountains in each of the 12 months, a hardcore 576 hikes. There's even a patch for it.

13

We are a patriotic state,

we're also a mountainous one.

13 of those mountains make up the Presidential Range, 9 of them are part of the 4,000 footers.

Mount Washington is the tallest at 6,288 feet.



54

There are 54 historic covered bridges in New Hampshire.

512

New Castle is the smallest town in New Hampshire. It covers .8 square miles, or 512

acres. The town is composed of one large island and several smaller islands, and serves as a scenic residential and recreational community.

110,229

Manchester is the biggest city in New Hampshire, the most recent census 110,229 people in 2015.

Manchester is also the largest city in northern New England (Vermont, New Hampshire and Maine).



# MOMS

**North Country Powersports**

*Since 1973*



.... At our New Groveton Location

**The North Country's  
Newest and  
Largest  
Polaris Dealer!**



**Snowmobile Rentals Available**

**~GUNS & AMMO~**



**WE BUY GUNS!**



**POLARIS®**



**In-House  
On-The-Spot  
Financing  
Available!**

**POLARIS SALES & SERVICE • STIHL SALES & SERVICE  
MOTORCYCLE SALES & SERVICE • GUNS & AMMO - WE BUY GUNS**

**603-636-MOMS (6667)**

**149 State Street, Groveton, NH • Snowmobile rentals available 603-684-8189**





*What's your adventure?*  
ANYTHING IS POSSIBLE



## Discover Adventures in Winter!

When it comes to winter adventure there's **MORE** in Mt Washington Valley, NH. Explore all that the season has to offer whether it's braving the cold or relaxing by a fire. Make Mt. Washington Valley your favorite winter destination.

- Skiing and Riding • Dog Sledding • Snowmobiling
- Snowshoeing • Tubing • Zip Lining • Ice Climbing
- Sledding • Ice Skating • Snow Coach Rides • Hiking
- Apres Ski Fun • And so much more to enjoy!

For visitor information & events

**MtWashingtonValley.org**

  
**New Hampshire**  
LIVE FREE

  
**MtWashingtonValleyNH**  
Anything is possible.



OUTLETS RETAIL RESTAURANTS CAFES EVENTS





## Tax-free shopping in the White Mountains

**There's always something new to discover**

— Tax-free shopping at over 80 of your favorite brands, locally-owned restaurants and eateries, and public art and gardens, all within walking distance. Stay at one of the dozens of nearby accommodations and make us your destination this winter.



 **Columbia** francesca's® **LOFT** OUTLET  **POLO RALPH LAUREN** **SKECHERS** **MICHAEL KORS**

WHITE MOUNTAIN HWY, NORTH CONWAY, NH  
[settlersgreen.com](http://settlersgreen.com) | 888-667-9636