

Build “Option 2”

**(same as original Option A)
161kV Transmission Line**

REALLY NO COMPARISON!

Option 1

Very Difficult to Construct

MISO Would Authorize Construction Periods

In Residential Easements and Not Along Street Rights of Way

Two Transmission Circuits On One Structure Reduces Reliability

Option 2

- Most Ease in Construction and Maintenance
- Along Major Road Rights of Way
- Solution That Best Fits the Needs of the System Now and in the Future
- LEAST COST OPTION – *Siemens Report*

LOOK BACK: MOVE FORWARD

- After Lengthy Public Engagement Process - City Council Approved Option A Route in July 2013 by 5-2 Vote – **Over Eleven Years Ago**
- Boone Electric Cooperative Supported Option A
- Voters Approved Option A by 68.6%-31.4% in April 2015 Bond Election – **Almost 10 Years Ago**
- Opposition to Option A, led by customers of Boone Electric, pressured City Council to “**pause**” Option A in January 2016 – **9 Years Ago**
- Previous Mayor Opposed Option A
- Several opponents of Option A were voting members of the task force **that evaluated the transmission issue.**

Columbia Record Summer Temperatures

- June 109 Degrees
- July 113 Degrees
- August 110 Degrees
- September 104 Degrees



Option 1
*Director of
Utilities Memo*
– May 30, 2024

Very Difficult to Construct

MISO Would Authorize Construction Periods
– Spring and Fall Over Multiple Years

In Residential Easements and not Along
Street Rights of Way

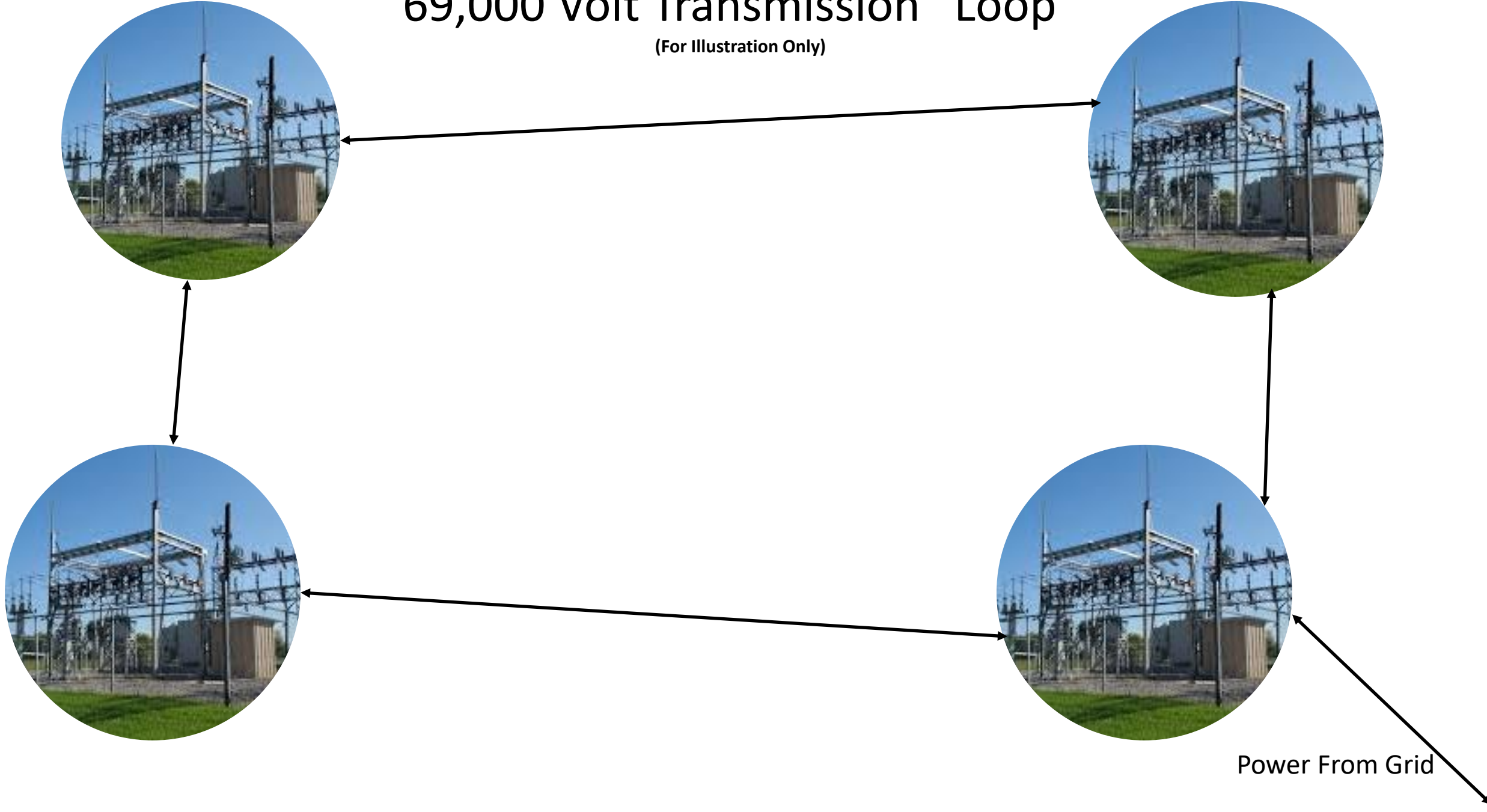
Two Transmission Circuits on One Structure
Reduces Reliability



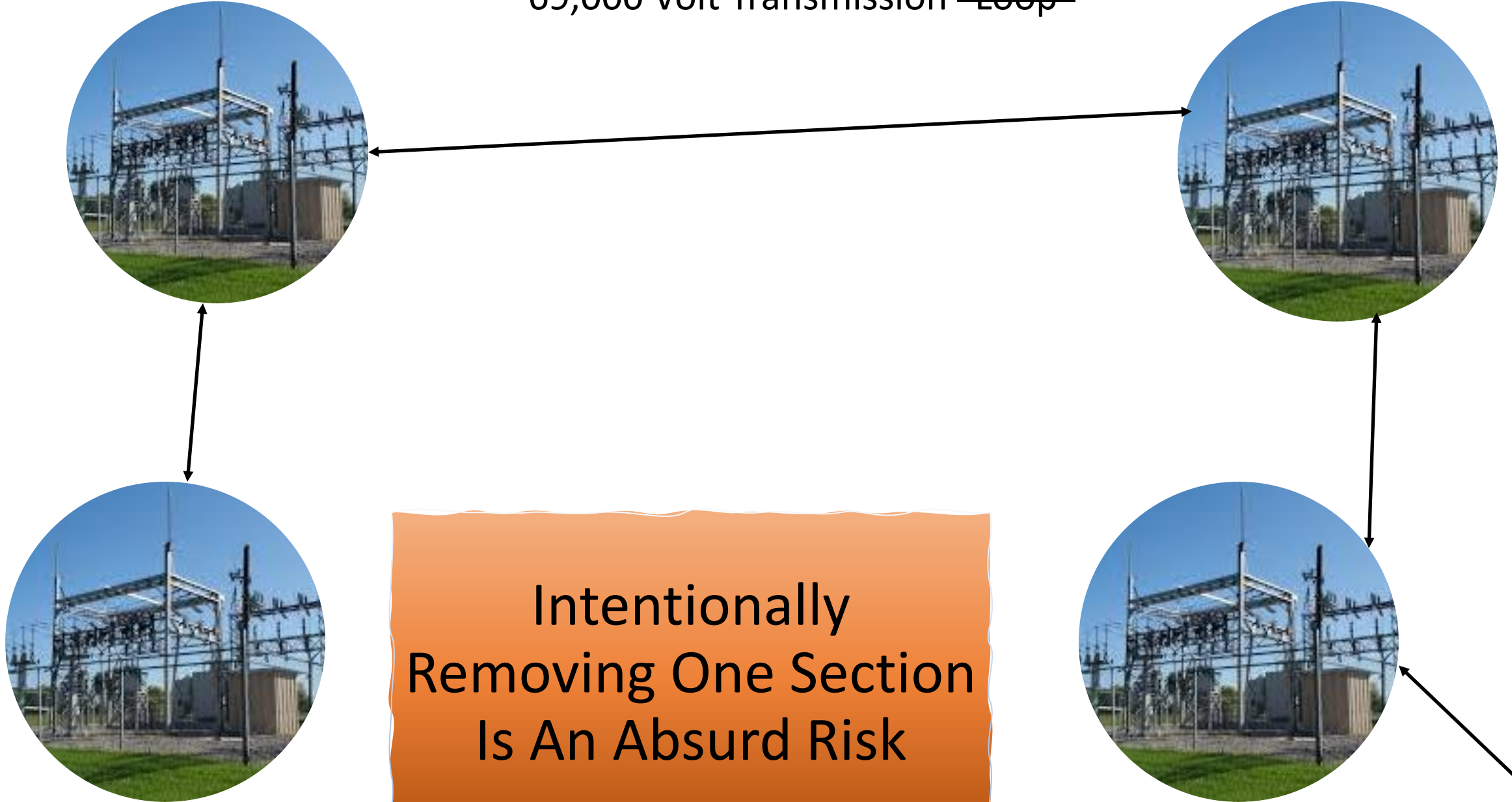
Option 1
Creates an Unnecessary Risk
to the Existing System

69,000 Volt Transmission “Loop”

(For Illustration Only)



69,000 Volt Transmission “~~Loop~~”



Power From Grid



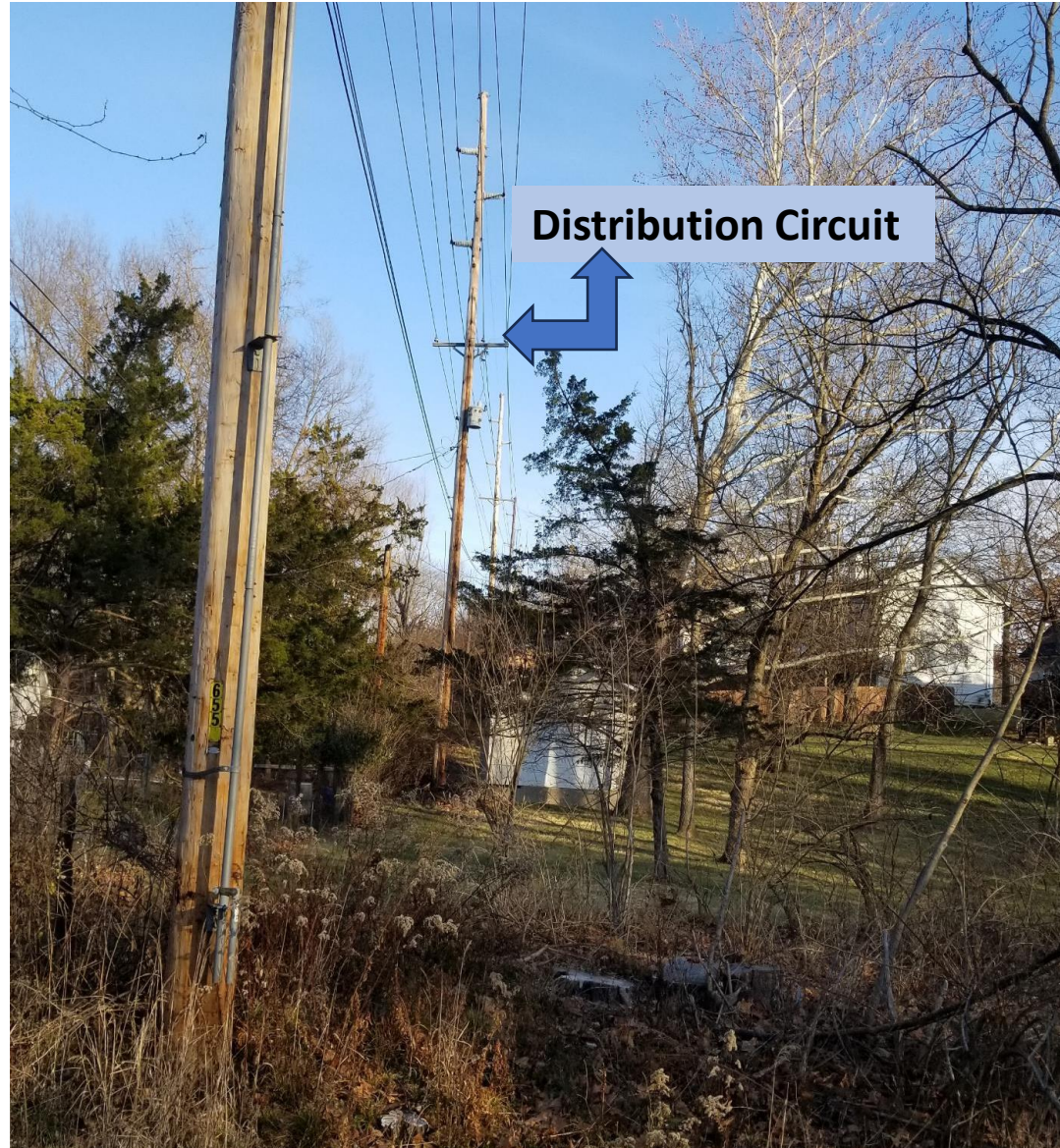
Option 1
Runs Between Businesses,
In Backyards, Side Yards
and Even Front Yards.



In Residential Easements and
not Along Street Rights of Way



Very Difficult to Construct



Option 2

*Director of
Utilities Memo
– May 30, 2024*

Most Ease In Construction and Maintenance

Along Major Road Rights of Way

Solution That Best Fits the Needs of the System Now and in the Future

Least Cost Solution — (Siemens Report)

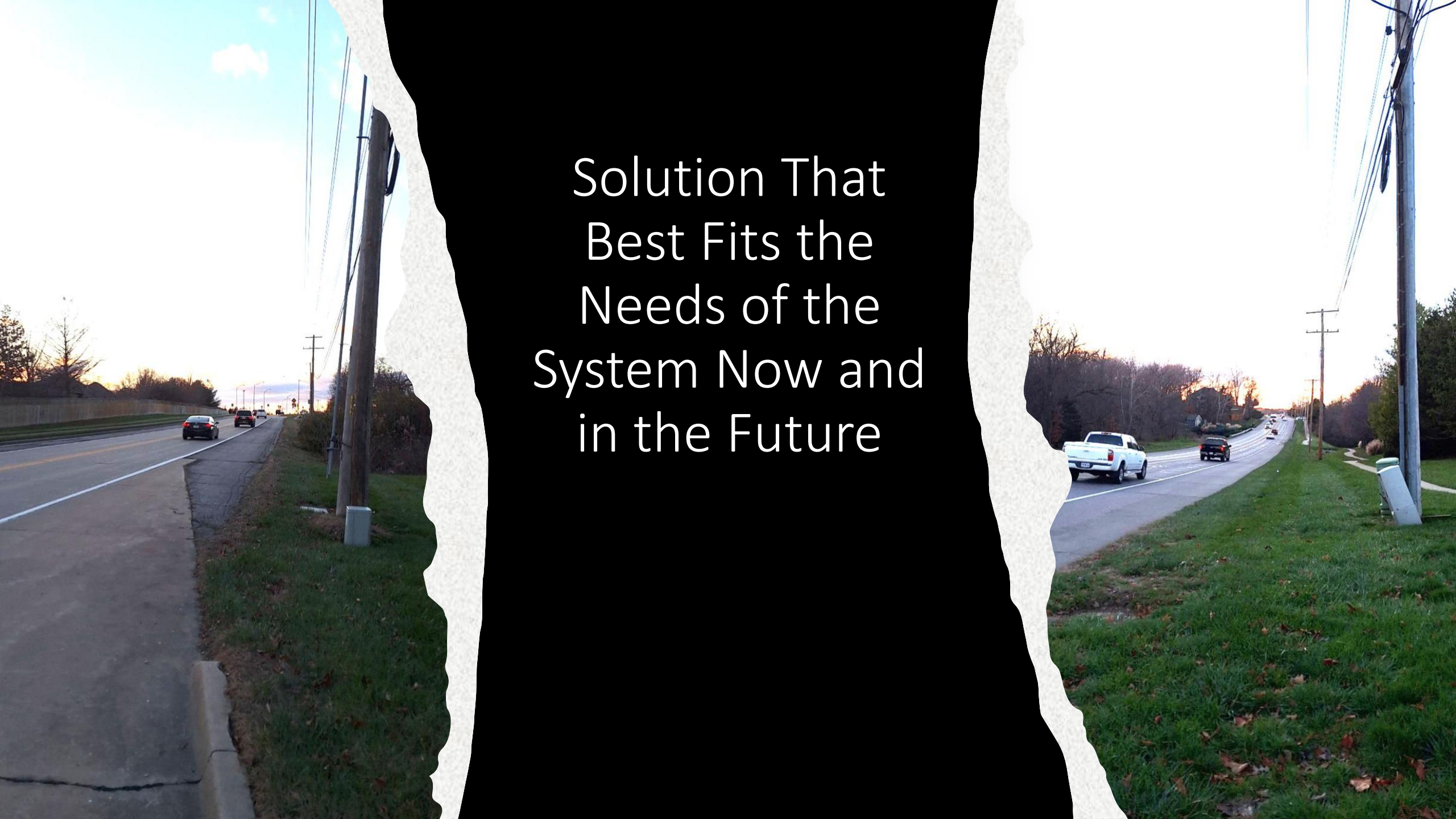
Along Major Road Rights of Way





Most Ease in Construction and Maintenance



The image shows a two-lane road with a concrete curb on the left and a grassy shoulder on the right. Several cars are visible in the distance. A large black rectangular area is superimposed over the center of the image, containing white text. The edges of the black area are irregular, resembling torn paper. The background shows a clear sky and some trees in the distance.

Solution That
Best Fits the
Needs of the
System Now and
in the Future

Do What
Voters Where
Told Would Be
Done

*“When we ask for a bond issue
that’s going to lead to a rate
increase then we should do what
we said we were going to do.”*

– Councilman Pitzer, February 2020



Electric
Customers
Expect Better
Solutions

“Load Shedding”
(Rolling Blackouts) Is
Not An Acceptable
Solution For Electric
System Emergencies

