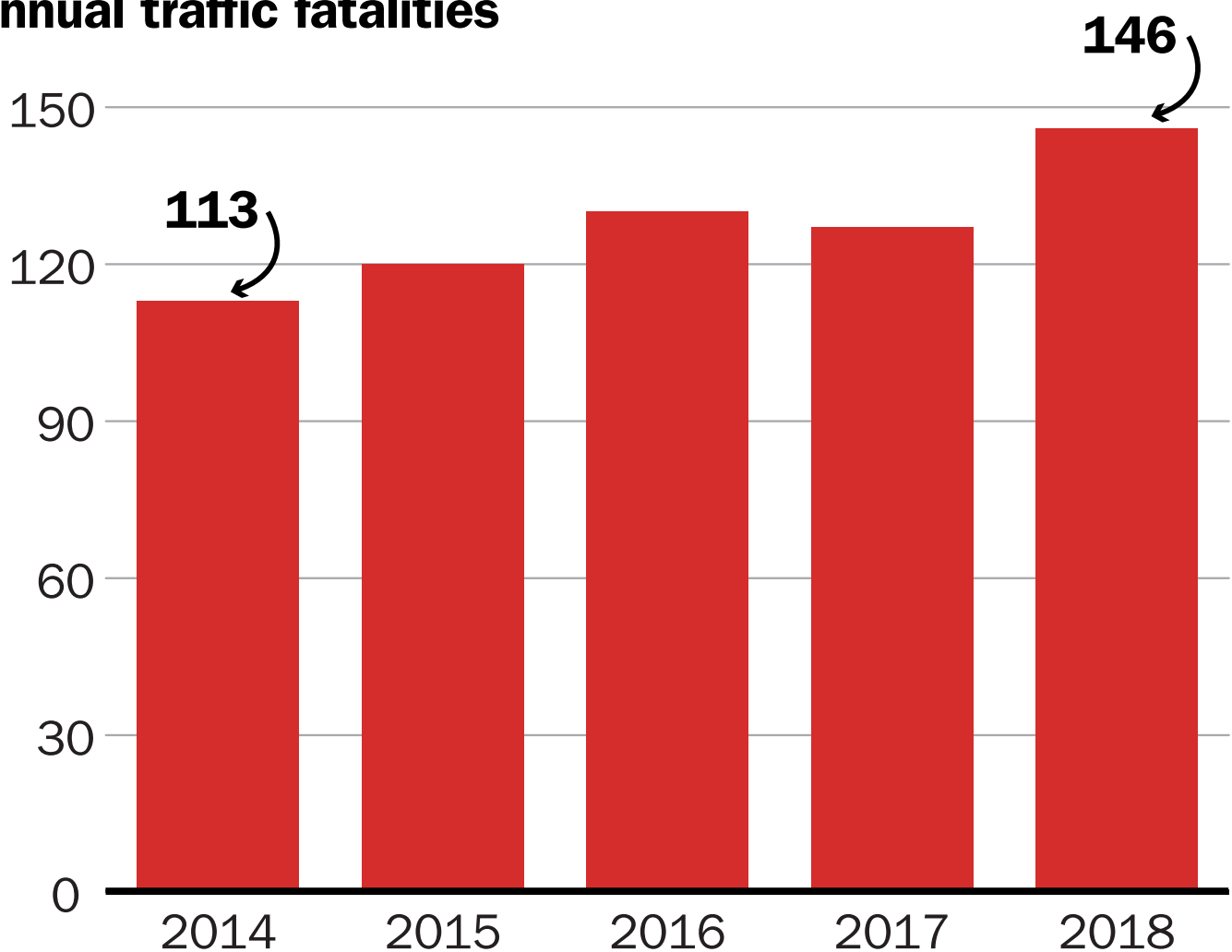


Increase in traffic fatalities for commercial vehicles

The number of traffic fatalities in Missouri that involved commercial vehicles rose by 33 from 113 in 2014 to 146 in 2018. Commercial motor vehicles include trucks with a gross vehicle weight of more than 10,000 pounds, vans with less than nine occupants and buses having 16 or more occupants.

Annual traffic fatalities



Source: MISSOURI DEPARTMENT OF TRANSPORTATION

HELLE ANDREASSEN/Missourian