

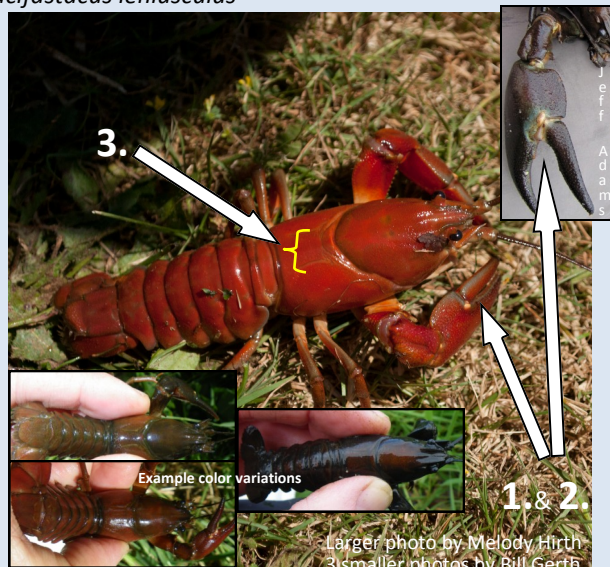
# Crayfish found in Oregon

\*Note: Colors vary for all crayfish and one should look for the key characteristics associated with the arrows

## Native to Pacific Northwest

### Signal Crayfish

*Pacifastacus leniusculus*



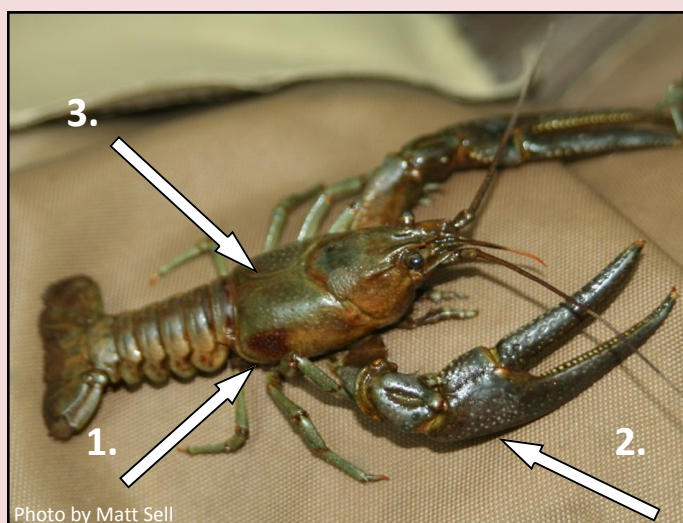
Identified by:

1. Claws are smooth; lack bumps
2. White "signal" spot on claw pivot
3. Wide body plate on the back

## Invasive from Ohio and Kentucky

### Rusty Crayfish

*Orconectes rusticus*



Identified by:

1. Large reddish-brown (rusty) spots on sides of body plates
2. Claws have bumps
3. Thin body plate on the back

## Invasive from Louisiana

### Red Swamp Crayfish

*Procambarus clarkii*



Identified by:

1. Large bumps located on body plates and claws
2. Lacks the body plate located on the back completely

## Invasive from the Great Plains

### Ringed Crayfish

*Orconectes neglectus*



Identified by:

1. Claws have orange tips and black bands
2. Thin body plate on the back
3. Dark markings on sides of tail

In Oregon, call 1-866-INVADER or go to [OregonInvasivesHotline.org](http://OregonInvasivesHotline.org)

In other states, contact the National Invasive Species Hotline: 1-877-STOP-ANS