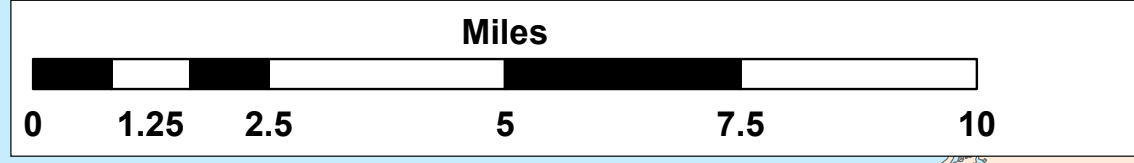
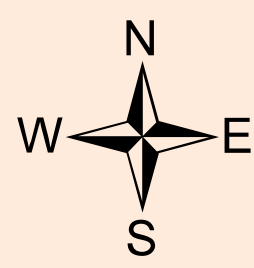
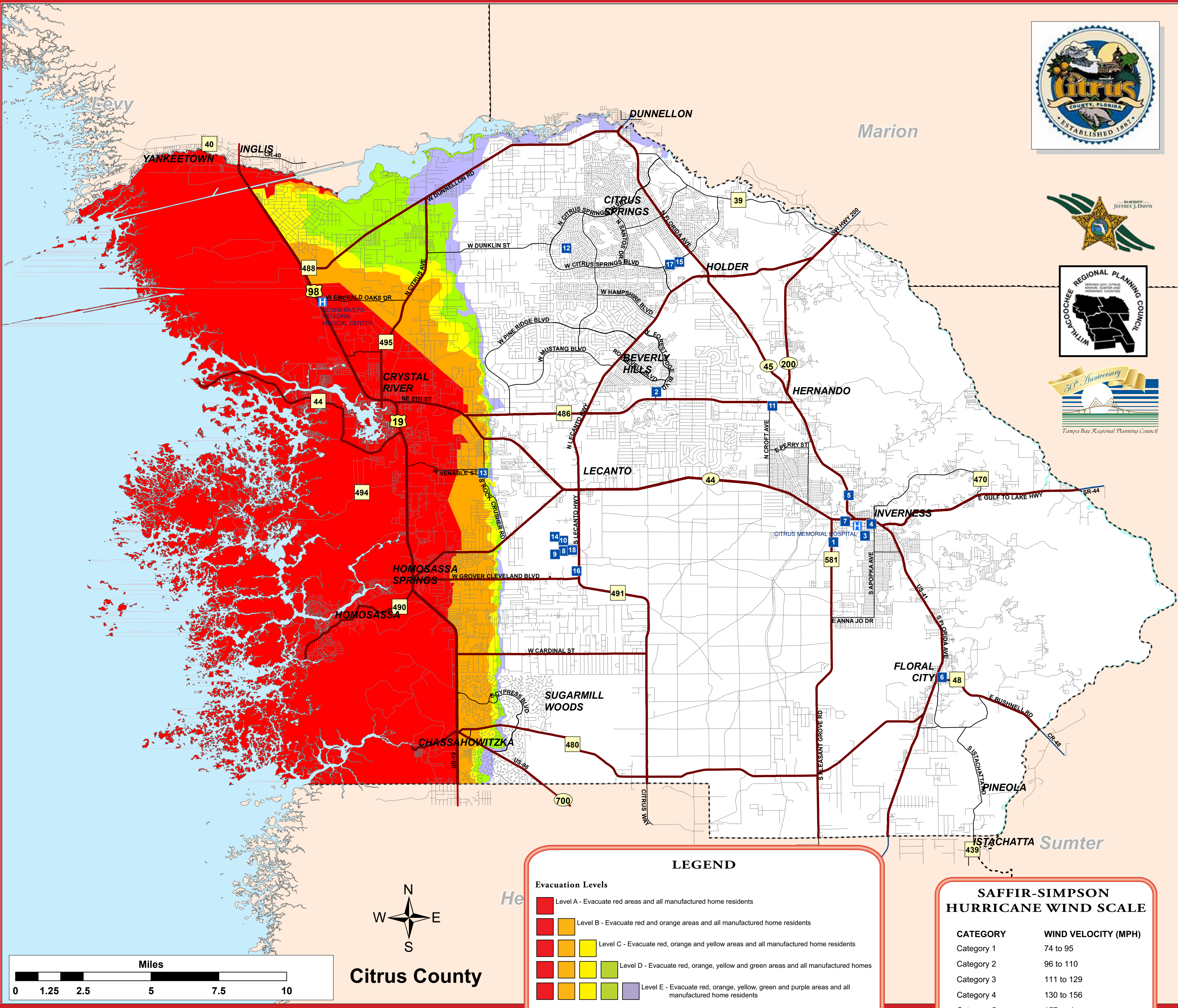


Citrus County Evacuation Map



Citrus County

CITRUS COUNTY SHELTER INFORMATION

NO.	SHELTER NAME	ADDRESS
1	Pleasant Grove Elementary School	630 Pleasant Grove Road, Inverness
2	Forest Ridge Elementary School	2927 North Forest Ridge Blvd., Hernando
3	Citrus High School	600 West Highland Blvd., Inverness
4	Inverness Primary School	206 South Line Ave., Inverness
5	Inverness Middle School	1950 Highway 41 North, Inverness
6	Floral City Elementary School	8457 East Marvin Street, Floral City
7	Withlacoochee Technical Institute (Reception Center)	1201 West Main Street, Inverness
8	Lecanto Primary School	3790 West Educational Path, Lecanto
9	Lecanto Middle School	3800 West Educational Path, Lecanto
10	Lecanto High School	3810 West Educational Path, Lecanto
11	Hernando Elementary School	2975 North Croft Avenue, Hernando
12	Citrus Springs Elementary School	3570 West Century Blvd., Citrus Springs
13	Rock Crusher Elementary School	814 South Rock Crusher Road, Homosassa
14	Crest School	2600 South Panther Pride Drive, Lecanto
15	Citrus Springs Middle School	150 West Citrus Springs Blvd., Citrus Springs
16	Central Florida Community College	3800 South Lecanto Highway, Lecanto
17	Central Ridge Elementary School	185 West Citrus Springs Blvd., Citrus Springs
18	Renaissance Center	3630 West Educational Path, Lecanto

NOT ALL SHELTERS MAY BE OPENED!
Citizens are urged to listen to local television or radio stations, or visit the Sheriff's Office website, www.sheriffcitrus.org, to find out which shelters are going to be opened.

Special Needs Shelters Pet Friendly Shelter

USING YOUR COUNTY MAP

- Locate where you live and work on the map.
- Determine whether you are in an evacuation area, and if so, what level (color).
- If you are in an evacuation area, or mobile home/manufactured home/RV, decide where you will go if ordered to evacuate. Your choices include:
 - Home of a relative or friend outside the evacuation zone
 - Hotel/motel outside the evacuation zone (make arrangements early)
 - Go to a public shelter
 - As a last resort leave the area entirely
- If you must go to a public shelter, use your county map to decide which one is convenient. Make sure you verify the shelter is open before you go.

HURRICANE THREAT

- The colored areas on the map are vulnerable to storm surge. Storm surge is the saltwater flooding that rushes over coastal areas when the eye of a hurricane crosses land.
- Storm surge creates a path of destruction, wiping out structures as it rapidly surges inland and then recedes. This is a life threatening situation for anyone who ignores mandatory evacuation orders and stays in vulnerable areas.
- Hurricanes are categorized on a scale of 1 to 5, depending on wind strength and destructive power. The evacuation zones are color coded to designate the level of storm surge likely to occur with the five categories.
- If you live in an area ordered to evacuate, gather your family/pets and emergency supplies, secure your home and leave immediately. Failure to obey a mandatory evacuation order is a violation of state and local laws.

Note: All persons living in mobile homes/manufactured homes/RVs must evacuate for all mandatory evacuation orders, regardless of where you are located in the county.

IMPORTANT CONTACT INFORMATION

POLICE, FIRE, EMS EMERGENCIES	911
CITRUS COUNTY SHERIFF'S OFFICE	726-4488
CITRUS COUNTY SHERIFF'S OFFICE, EMERGENCY MANAGEMENT	746-6555
LECANTO GOVERNMENT BUILDING	527-5200
CITRUS COUNTY HEALTH DEPARTMENT	527-0068
CITRUS COUNTY PUBLIC WORKS	527-5477
CITRUS COUNTY ANIMAL SERVICES	726-7660
CITRUS COUNTY SOLID WASTE	527-7670
CITRUS COUNTY SCHOOL BOARD	726-1931
CITRUS COUNTY FLOOD MANAGEMENT COORDINATOR	527-5253
NATURE COAST VOLUNTEER CENTER	527-5952
CITY OF INVERNESS ADMINISTRATION	726-2611
CITY OF INVERNESS PUBLIC WORKS	726-2321
CITY OF CRYSTAL RIVER ADMINISTRATION	795-4216 x302
CITY OF CRYSTAL RIVER PUBLIC WORKS	795-4216 x313
FLORIDA HIGHWAY PATROL	1-866-369-4613
FLORIDA FISH & WILDLIFE CONSERVATION COMMISSION	1-888-404-3922
AMERICAN RED CROSS (CITRUS COUNTY CHAPTER)	564-8455
SALVATION ARMY (CITRUS COUNTY)	621-5532
UNITED WAY OF CITRUS COUNTY	527-8894
PROGRESS ENERGY (TO REPORT OUTAGES)	1-800-228-8485
SUMTER ELECTRIC (TO REPORT OUTAGES)	1-800-732-6141
WITHLACOOCHEE ELECTRIC	795-4382
CITIZEN INFORMATION & RUMOR CONTROL LINES OPEN DURING EMERGENCIES	746-5470 527-2106