

The background is a dark blue gradient with a subtle grid pattern. On the right side, there is a bright, glowing light source that creates a lens flare effect, illuminating the surrounding area with a lighter blue hue. The light source appears to be coming from the top right corner, casting a beam of light across the scene.

Kings Bay Kayak Presentation





The Issues

- Unmanaged Commercial Overuse of City launch facilities
- No revenue, costs covered by taxpayers
- Overabundance of kayaks on Kings Bay
- Safety

The Solution

- Kings Bay Park - Commercial and individual use
- Hunters Springs Park - Individual use only
- Institute fees
- Upgrade Kings Bay Park kayak facilities
- Dedicated full time staff
- Kayak safety program

The Steps

Immediate (By August 7)

- Move all commercial kayak lunches to Kings Bay Park
- Kayak Corrals
- Use agreements with vendors
 - Establishes rules of use
 - Insurance – City named as additional insured
 - Can be amended unilaterally by City

Kings Bay Park



New Kayak Launch



Existing Kayak Launches



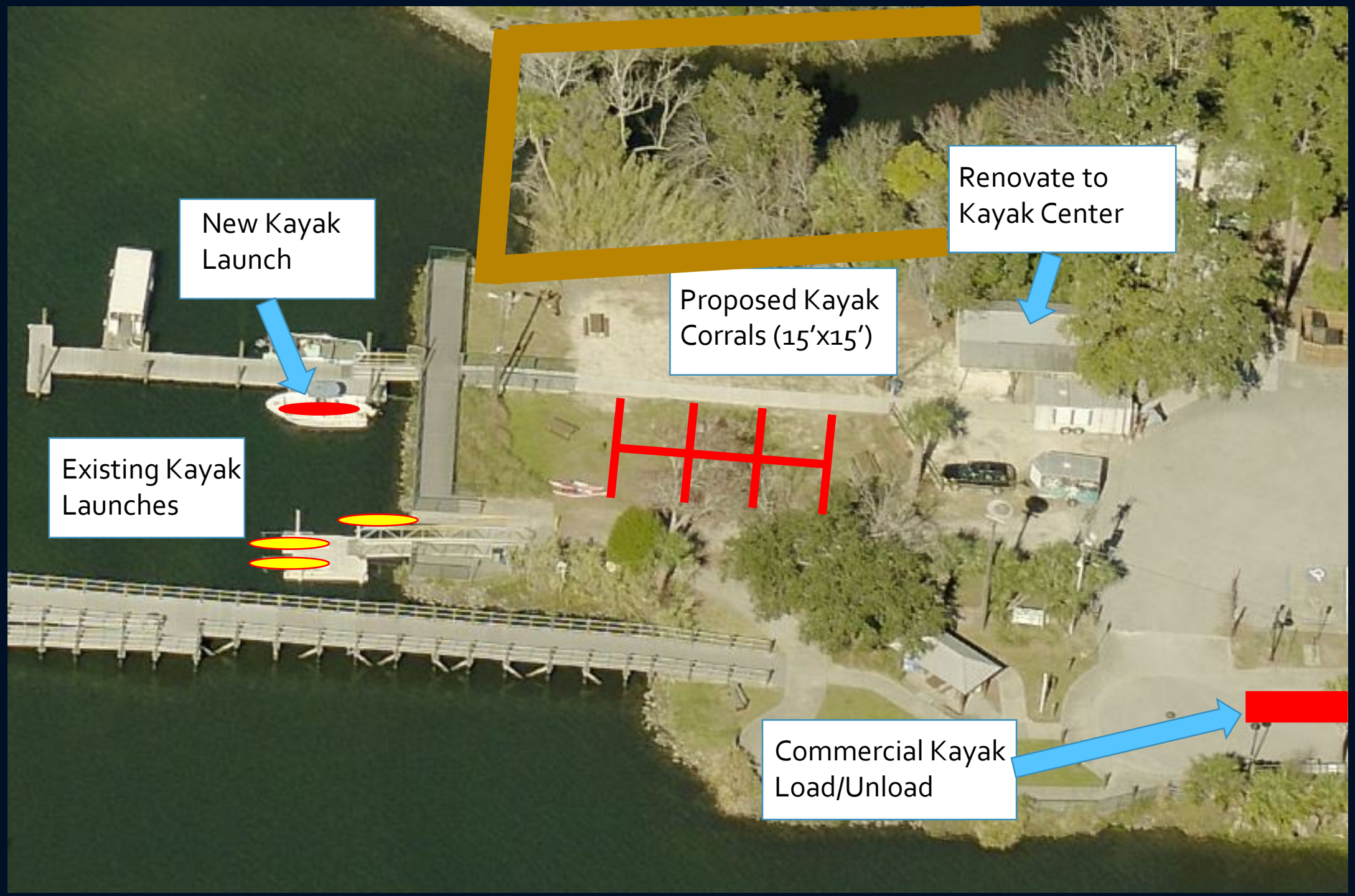
Proposed Kayak Corrals (15'x15')



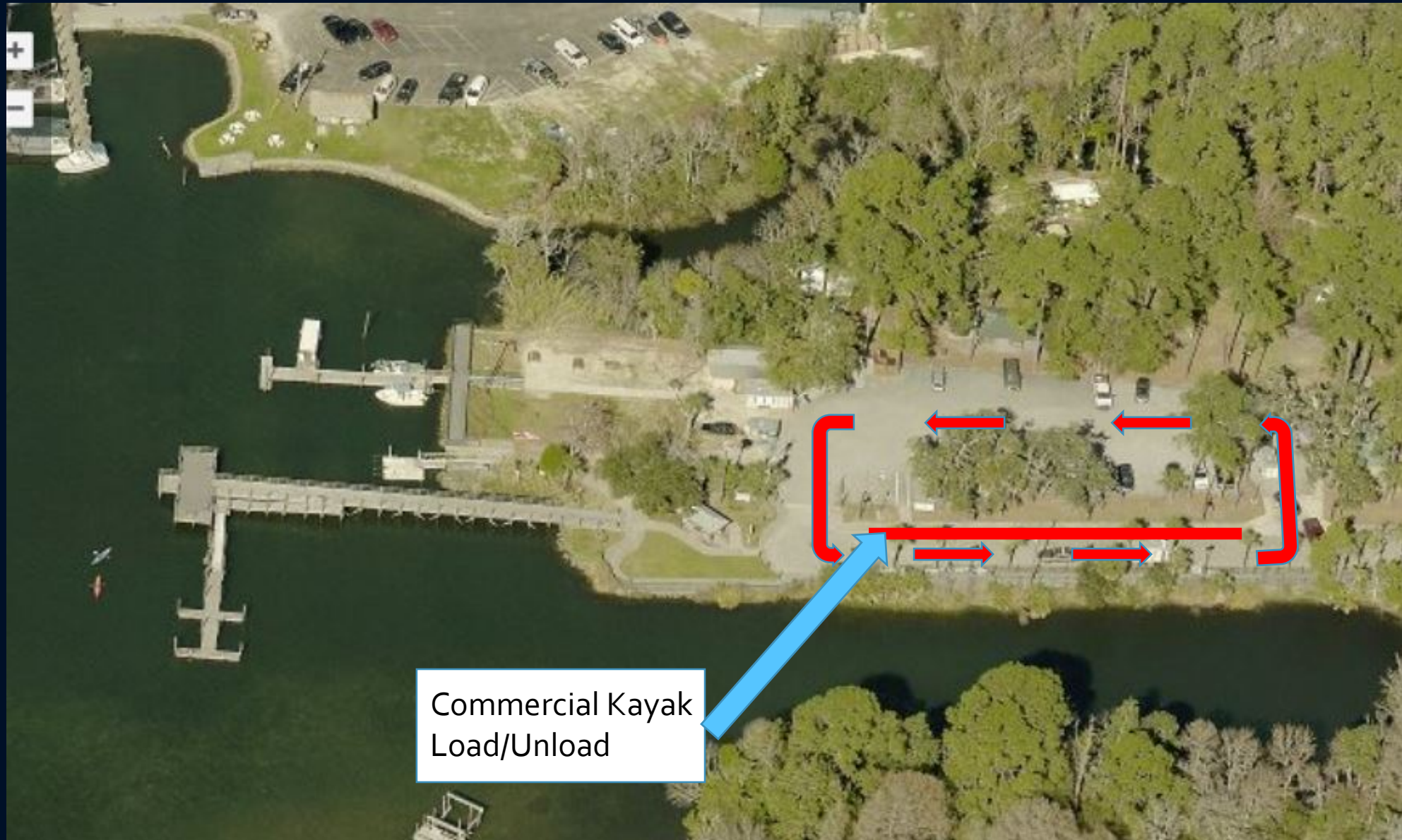
Renovate to Kayak Center



Commercial Kayak Load/Unload



Kings Bay Park



The Steps

Intermediate (1 – 4 months)

- Modify Section 12.2-3(14) of the City Code to allow for commercial launch fee by resolution
- Adopt Resolution:
 - Establishes kayak launch fee
 - Allows for rental of Kayak Corrals
 - Registration and identification of kayaks
 - Kayak safety video and brochure

The Steps

Intermediate (1 – 4 months)

- Adopt Resolution (cont):
 - Allowable hours of use for launch/unlaunch
 - May limit number of commercial launches
 - Prohibit commercial kayak use of City ramps
 - Fines and revocation
 - Appeals process

The Steps

Intermediate (1 – 4 months)

- Bid out and lease corrals
- Begin collecting launch fee
- Full time attendant(s)
- Third kayak launch
- Designate 3rd street for commercial kayak load/unload

The Steps

Long Term (4 – 12 months)

- Renovate existing storage building
- Safety video and brochure
- Install “Guidance” signage in bay
- Monitor use/collect data
- Guidelines for closing launch
- Anchorage exclusion zones at choke points

Recommended Motion

Recommend that the City Council proceed with a program to regulate utilization of city owned facilities by commercial paddlecraft vendors as presented

