

*2019 Northern New Hampshire &
Northeastern Vermont*

FREE

SUMMER GUIDE

The Caledonian-Record • The Orleans County Record • The Littleton Weekly Record



As a **GOOD NEIGHBOR** boarding student at St. Johnsbury Academy, you can expect no less than a life-changing learning experience.



"I love the Academy because it has given me so many opportunities to learn and explore."

Oshun S.
Academy boarding student from Montgomery Center, Vermont

"What I love most about the Academy is the diverse group of students in the boarding community and the friendships I have developed there."

Sam C.
Academy boarding student from Lyme, New Hampshire

"Living on campus full-time was a life-changing experience for me!"

Alison R.
Academy boarding student from Montpelier, Vermont

We are SJA.

ST. JOHNSBURY ACADEMY An independent, coeducational, boarding and day school for grades 9-12 and postgraduate year located in St. Johnsbury, Vermont.



Inside

Take A Trip To The Moon5

Summer Events8

Great Fishing Tips From NEK Experts10

A Concert Series For All, Dogs Included.....13

The Most Important Kingdom Trails Resource20

The Where And When Of County Fairs.....26

Groove Your Swing At Area Golf Courses27

Exploring Mt. Washington.....28



PUBLISHER
Todd M. Smith

EDITOR
Leah Carey

LAYOUT
Andrew McGregor

COVER DESIGN
Glen Jardine

COVER PHOTO
Paul Hayes

ADVERTISING SALES

Julie Poutre,
Brooke Dolloff,
Glen Jardine,
Sylvie Weber

ADVERTISING DESIGN & PRODUCTION
Jeana Desilets

CONTACT US

Advertising: adv@caledonian-record.com
News: news@caledonian-record.com
Phone: 802-748-8121
Web: caledonianrecord.com

A PUBLICATION OF THE CALEDONIAN-RECORD PUBLISHING COMPANY, INC.
190 Federal Street, P.O. Box 8, St. Johnsbury, VT 05819
© Caledonian-Record Publishing Company, Inc May 2019.



East Burke Sports

Full service trail side bike shop
for retail, rentals and repairs

eastburkesports.com | Route 114, East Burke, VT
info@eastburkesports.com | 802.626.3215





FUN, AFFORDABLE, FAMILY ENTERTAINMENT

ESTABLISHED 1963

EQUIPMENT SALES, SERVICE AND ACCESSORIES IN THE 10 PINS IN THE PIT PRO SHOP

OPEN BOWLING TIMES EVERYDAY

COSMIC BOWLING EVERY WEEKEND



Lamplighter Lounge

ESTABLISHED 1972 (INSIDE GOLD CROWN LANES)

ALWAYS SPORTS ON THE 3 TV'S AROUND THE LOUNGE

NOW WITH 14 BEERS ON TAP

212 HASTINGS HILL-ST. JOHNSBURY, VT-802-748-2205

**FOR OPEN BOWLING HOURS
VISIT GOLDCROWNLANES.COM**



MARTY'S 1ST STOP

U.S. ROUTE 2 ► DANVILLE, VT

802-684-2574



OPEN EVERYDAY!
24/7 GAS & ATM
HOT & FRESH COFFEE

IN A HURRY?
Call in your
deli or meat
order:
684-2574

Like us on
facebook



Everything For Your Next Cookout
Including a Large Selection of Wine & Beer!



*Look for Our Weekly Flyer for Savings on Meat,
Groceries, Veggies & more!*

Online, in your mailbox or in the store!
(Online Coupons Also Available)

- NY Strip • Marty's Famous Beef Tips • Delmonico
- T-bones • Flank Steak • Flat Iron Steak

All Certified Black Angus

MARINATED CHICKEN • PRE-SEASONED PUB BURGERS • LEAN GROUND BEEF

- BOAR'S HEAD DELI MEATS ALSO AVAILABLE

- Deli • Homemade Soups • Wraps
- Subs • Hot & Cold Sandwiches • Salads
- Burgers • French Fries • Tenders
- Lunch & Dinner Specials • Coffee • Pizza

Fresh Maine Lobster



MAINE SEAFOOD
*Delivered Fresh Every
Tuesday and Friday*

Mon-Thu. 5:30am-8:30pm • Fri. & Sat. 5:30am-9:00pm • Sun. 5:30am-8:00pm • www.martysvt.com

ADVERTISER INDEX

ABBOTT RENTAL	18	ELKS LODGE	20	LITTLE VILLAGE TOY & BOOK SHOP	18	ROWELLS SUGARHOUSE	21
ALL AROUND RENTAL	24	FAIRBANKS MUSEUM	20	LITTLETON FARMERS MARKET	25	SAMADHI CUSHIONS	15
ALL AROUND RENTAL	31	FAIRBANKS SCALES	34	LITTLETON FOOD COOP	11	SAMBELS RESTAURANT	13
APPALACHIAN SUPPLY	34	FARMERS DAUGHTER	34	LITTLETON REGIONAL HEALTHCARE	35	SANDERSON'S WOODEN BOWLS	30
B.C. MASONRY	31	FLOOR WORKS	18	LYNDON AREA CHAMBER OF COMMERCE	28	SANTAS VILLAGE	23
BARNET TRADEPOST WELLNESS CENTER	30	FOUR SEASONS SOTHEY'S INT'L REALTY	15	LYNDON BUFFET	31	SEWIN LOVE FABRIC SHOPPE	31
BARTON GOLF CLUB	34	FRAMING FORMAT	15	LYNDON INSTITUTE	8	SNJ RAIN GUTTERS	28
BEFORE AUTO	30	GOLD CROWN LANES	3	LYNDON MOTOR LODGE	31	ST. JOHNSBURY ACADEMY	2
BELLA FUNK BOUTIQUE	18	GOODRIDGE LUMBER	25	LYNDONVILLE REDEMPTION & BEVERAGE	30	ST. JOHNSBURY CHAMBER OF COMMERCE	29
BURKE COTTAGE RENTALS	31	GREEN MOUNTAIN BOOKS & PRINTS	31	MARTYS 1ST STOP	4	ST. JOHNSBURY COUNTRY CLUB	12
C. H. DANA RV SALES INC.	32	GRIME NURSERY & LANDSCAPING	24	MISS LYNDONVILLE DINER	31	ST. JOHNSBURY HISTORY & HERITAGE CENTER	12
CALEDONIA COUNTY FAIR	14	HASTINGS STORE	34	MITTERSILL ALPINE RESORT	18	STOCKLEY TRUCKING	19
CATAMOUNT FILM COMPANY	5	INN AT WHITEFIELD	23	MOMS GROVETON	7	THADDEUS STEVENS SCHOOL	13
CLYDE RIVER RECREATION	33	JACKSONS LODGE	27	MOOSE RIVER LAKE & LODGE	14	THE CARPET CONNECTION	31
COG RAILWAY	32	JAX JR.	19	MORRILL & GUYER ASSOCIATES	28	THE GALE INSURANCE AGENCY	33
COLONIAL THEATRE	6	JAY PEAK	16	NEW CENTURY RESTAURANT	13	THURSTON AUTO SALES	30
DALTON MOUNTAIN MOTORSPORTS	22	JIM CAMPBELL REAL ESTATE	17	NOOTKA LODGE	33	TOPIC OF THE TOWN	19
DAN WYAND, PT & ASSOCIATES	30	JOES POND CRAFT SHOP	34	NORTH COUNTRY COMMUNITY RECREATION	26	TOWNS CORNER STORE	31
DANVILLE DENTAL GROUP	30	JON PARKS TRACTOR	23	NORTHEAST KINGDOM ARTISANS GUILD	12	VILLAGE GUN STORE	22
DAVID A. LUSSIER REAL ESTATE	31	KINGDOM CANINE CENTER	30	OLD STONE HOUSE MUSEUM	10	WAUMBEC COUNTRY CLUB	23
DETAILS WINDOW FASHIONS	19	KINGDOM TAPROOM	21	OMNI MOUNT WASHINGTON/ROP	36	WES WARD AUTO REPAIR	32
DO NORTH CO WORKING SPACE	9	L. L. COTE	26	ORLEANS COUNTRY CLUB	29	WHITE CAPS CAMPGROUND	30
DUCRET'S SPORTING GOODS	27	LANCASTER FAIR	22	ORLEANS COUNTY FAIR	24	WILLOUGHBY LAKE STORE	30
EAMES REALTY COMPANY	18	LAPERLES IGA	27	PAMFEST	25	WILL-O-WOOD CAMPGROUND	30
EAST BURKE SPORTS	3	LEBLANC FAMILY FARM	13	POLLYS PANCAKE PARLOR	19		
EASY AUTOS	30	LEMIEUX GARAGE	27	RABBIT HILL INN	6		

**THESE BUSINESSES
MAKE OUR AREA SPECIAL.
PLEASE SUPPORT THEM.**

Take A Trip To The Moon At Fairbanks Museum



Fairbanks Museum science educator Bobby Farlice-Rubio leads astronomy presentations in Vermont's only public planetarium. He is working with NASA to bring moon rocks to St. Johnsbury. (Photo courtesy of Fairbanks Museum)

Long ago and far away ... On July 20, 1969, humans walked on the moon for the first time.

This summer and quite close ... This year marks the 50th anniversary of the moon landing. But you don't have to go far this summer to satisfy your moon curiosity – just head over to Fairbanks Museum and Planetarium in St. Johnsbury.

The highlight of any space enthusiast will surely be the genuine moon rocks that Fairbanks will be receiving from NASA for the anniversary festivities. But there will be so much more to see and experience!

According to Anna Rubin, the Director of External Relations at the Fairbanks, there will be plenty to keep history, moon, and science buffs entertained.

"We're celebrating the 50th anniversary of the lunar landing with a special exhibit that features images and stories about the Apollo craft and mission," Rubin said. "We'll have live presenters who will talk through what it felt like to walk on the moon and what it may have been like."

There's also another fascinating story to be told that gets less coverage.

"It's all of the science and engineering that went into developing the Apollo mission and successfully landing it, and all of the science - what actually went on in that

Fairbanks continues on 6







FREE

St. Johnsbury Music Series
SUNDAYS, SUMMER 2019

**FOOD & BEER VENDORS
FAMILY & DOG FRIENDLY**

JULY 14 - PETER KARP
JULY 21 - ALBANNACH
JULY 28 - B2WINS
AUG 4 - WARD HAYDEN & THE OUTLIERS
AUG 11 - REALTA

AUG 18 - MĀMĀ MIHIRANGI & THE MĀREIKURA
AUG 25 - LA MISA NEGRA
SEP 8 - BARIKA & DABY TOURE
SEP 15 - DURHAM COUNTY POETS
SEP 22 - NOMADIC MASSIVE

Visit concerts.levittamp.org/stjohnsbury for more information



Senior Meteorologist Mark Breen adjusts a telescope in front of the Fairbanks Museum. (Photo courtesy of Fairbanks Museum)

Fairbanks

Continued from Page 5

room?” Rubin said. “It wasn’t just the astronauts, it was all the people were behind the launch, the landing, building the ship, and all of the technology of the suit and what they would eat! There’s a tremendous amount of science that went into all of that planning.”

The team at Fairbanks is designing panels, activities and presentations to cover all of it (though at the time of publication the activities hadn’t yet been set in stone.)

There will be stations for kids ages 5 to 12 to explore and build using simple tools like Legos and blocks.

“We want to provide it as inspiration – it’s the antidote to a lot of screen time,” Rubin said. “Reconnect with the three-dimensional and see what you can do. These are the things you’re going to be using all the time, and you’re also learning physics and engineering and you’ll be able to make pulleys and create ramps.”

One activity may explore how craters form.

“You can create a crater by throwing sand and measuring what the impact is and how

big the crater is,” Rubin said. “We might be doing something like that to understand what the moon’s surface looks like and how it got that way.”

The day of the anniversary, July 20, will be the Astronomy Extravaganza block party on Main Street in St. Johnsbury. “We’ll have activities and games to encourage beginner and expert stargazers,” Rubin said.

People continue to be fascinated with the moon and human’s first steps on it, and the people of Fairbanks Museum are excited to celebrate all of it.

“We’ve learned a tremendous amount about our moon and about space travel. The technical and engineering advances that brought Apollo to the moon and back have also changed our daily lives,” Rubin said. “The discoveries continue to push the boundaries of what we understand about our universe and beyond. And with each discovery, we also learn about our own planet and the systems that sustain life here.”

Why are people passionate about the anniversary of landing on the moon?

“There’s something beautiful and complicated and mysterious about how all these heavenly bodies fit together.” ~ Senior Meteorologist Mark Breen



RABBIT HILL INN

...a deliciously romantic Vermont experience!

"A Bucket List Restaurant in Vermont"
Burlington Free Press



Relaxed & Casual Setting
Exciting & Memorable Cuisine

View menu online - www.rabbithillinn.com



Restaurant Open Nightly (except Wed)
Reservations Required 802-748-5168



LIVE! THE COLONIAL

Your ticket to the next great moment.

Pat Metheny Solo (sold out)	Red Baraat
Ghost of Paul Revere	Béla Fleck & Abigail Washburn
Bombino	Ganstagrass
The Capitol Steps	Anaïs Mitchell
The War and Treaty	Iris Dement
The Quebe Sisters	Adonis Puentes & The Voice of Cuba Orchestra
Natalie Merchant (sold out)	Kat Wright
The Hot Sardines	

Order your tickets today at BethlehemColonial.org

JOIN US AT THE MOVIES TOO!
Presenting the best in independent & world cinema.
Our concessions include Beer & Wine, fine chocolates, coffee, tea, and more.

Visit BethlehemColonial.org for updates
Info Line: 603.869.3422

THE COLONIAL
Celebrate the unexpected.

MAIN STREET, BETHLEHEM, NH

MOMS

North Country Powersports

Since 1973





POLARIS®



STIHL®

MOMSNORTHCOUNTRY.COM | (603) 636-6667

THE NORTH COUNTRY'S LARGEST POLARIS DEALER

// SALES

// SERVICE

// PARTS

// RENTALS

// FINANCE



149 STATE ST. GROVETON, NH 03482





WE RENT POWERSPORTS





AND MORE!



@MOMSGROVETON



@MOMS1973



@MOMSTV

Reminder: This calendar was put together in May, before some venues had their full summer calendars ready, so it's always worth checking websites to see if your favorite venue has something going on! Also, things change, so please call, email, or check online to confirm times and locations before heading out.

CALENDAR

Saturday, June 8
Pollyanna Glad Day, Littleton Public Library. For info: littletonareachamber.com.
9:00 a.m. - Out of the Darkness Campus Walks - walk to fight suicide, St. Johnsbury School. For info: afsp.org/STJSD.
10:00 a.m. - Celebration of Lupines, Sugar Hill. For info: franconianotch.org.
1:00 p.m. - North Country Chamber Players - Explorers Concert, Littleton Opera House. For info: northcountrychamberplayers.org.
4:00 p.m. - NorthWoods Open House featuring music by The Wind that Shakes the Barley, NorthWoods Stewardship Center. For info: northwoodscenter.org.
4:00 p.m. - Old Stone House Music Series - Fifth Business, Brown-ington Congregational Church. For

info: oldstonehousemuseum.org.
7:00 p.m. - Our Third Act - stories of aging with grace, St. Johnsbury South Church. For info: nekouncil.org.
Sunday, June 9
10:00 a.m. - Celebration of Lupines, Sugar Hill. For info: franconianotch.org.
3:00 p.m. - Diagonal Life: Theory and Praxis, Bread and Puppet Theater. For info: breadandpuppet.org.
5:00 p.m. - North Country Chamber Players - Spring Gala Concert, Mountain View Grand Resort. For info: northcountrychamberplayers.org.
Monday, June 10
6:30 p.m. - St. Johnsbury Band Concert, St. Johnsbury Health & Rehab. For info: stjohnsburyband.org.
Wednesday, June 12
1:00 p.m. - LCC Book Club, Lit-

tleton Community Center. For info: littletonareachamber.com.
Friday, June 14
2:00 p.m. - Genealogy Meet Up, Littleton. For info: littletonareachamber.com.
5:00 p.m. - Reminiscences Series, Old Stone House Museum. For info: oldstonehousemuseum.org.
6:00 p.m. - Family game night, Littleton Community Center. For info: littletonareachamber.com.
7:00 p.m. - Catamount Arts Open Stage - all ages, substance-free, student run, The Cavern. For info: discoverstjohnsbury.com.
8:00 p.m. - Bombino in concert, Bethlehem Colonial Theatre. For info: bethlehemcolonial.org.
Saturday, June 15
9:00 a.m. - Fly Fishing Clinic, NorthWoods Stewardship Center. For info: 802-754-2456.

9:00 a.m. - Texas Hold'em Tournament, Westfield Community Center. For info: 802-744-9927.
10:00 a.m. - Stacking Rings class, Littleton Studio School. For info: littletonstudioschool.org.
10:00 a.m. - Beginner stained glass, Littleton Studio School. For info: littletonstudioschool.org.
6:00 p.m. - Feast with the Beasts, Fairbanks Museum. For info: fairbanksmuseum.org.
7:30 p.m. - Comedy on the Line - The Unmentionables, Haskell Opera House. For info: haskellopera.com.
8:00 p.m. - S. M. Wolf / Experimental Forest, The Loading Dock. For info: theloadingdocknh.com.
Sunday, June 16
1:00 p.m. - Burke Music Jam, Burke Community Building. For info: burkevermont.com.
3:00 p.m. - Diagonal Life: Theory

and Praxis, Bread and Puppet Theater. For info: breadandpuppet.org.
Monday, June 17
7:30 p.m. - St. Johnsbury Band Concert, St. Johnsbury Courthouse Bandstand. For info: stjohnsburyband.org.
Wednesday, June 19
7:00 p.m. - MET Encores - Romeo et Juliette, Catamount Arts. For info: catamountarts.org.
Thursday, June 20
2:00 p.m. - Basket Weaving part 1, Littleton Studio School. For info: littletonstudioschool.org.
5:30 p.m. - Basket Weaving part 2, Littleton Studio School. For info: littletonstudioschool.org.
6:00 p.m. - Her Majesty's Secret Circus Show - stunt-comedy for all ages, Court Street Arts. For info: courtstreetarts.org.
Friday, June 21

7:00 p.m. - Pine, Old Church Theater. For info: oldchurchtheater.org.
7:00 p.m. - Catamount Arts Open Stage - all ages, substance-free, student run, The Cavern. For info: discoverstjohnsbury.com.
Saturday, June 22
150th Anniversary Gala, Mt. Washington Cog Railway. For info: www.thecog.com
7:00 a.m. - 2XU White Mountains Triathlon, Cannon Mountain. For info: millenniumrunning.com.
8:00 a.m. - VT Breakfast on the Farm - family-friendly event to meet farmers and cows, Maxwell's Neighborhood Farm. For info: vermont-breakfastonthefarm.com.
9:00 a.m. - Kingdom Heritage Trail Opening - guided hikes start at 10:00 a.m., Island Pond Covered Footbridge. For info: northwood-center.org.
10:00 a.m. - Burke Mountain Club Centennial Celebration, Burke Mountain Club. For info: burkevermont.com.
10:00 a.m. - Handmade clasps class, Littleton Studio School. For info: littletonstudioschool.org.
4:00 p.m. - Old Stone House

Calendar continues on 14

We Invite You to Schedule a Tour or Shadow Day to Experience All That Lyndon Institute Has to Offer



January Term
Hands-on Project-Based Learning



Career Science & Technical Pathways - CTE
Job Skills to Take into the Workforce



STEM
Learn New Ways to Advance and Change Our World



Lyndon INSTITUTE

Lyndon Learning Collaborative
Earn Free College Credits



Arts, Clubs, Athletics, & More
Let Your Talents Shine



Humanities & World Languages
Advance Your Scholastic Knowledge with Real-World Application

Whether a student is getting hands-on experience in the classroom, in the workshop, on the playing fields, or in extracurricular activities, we believe that students learn "by doing" and we strive to offer multiple opportunities for our students to create, discover, make, build, and explore.

Office Space

Make the most of your time and get back out there. Share space, equipment, ideas, and knowledge at the NEK's preeminent coworking environment.



930 Broad St., 2nd Floor, Lyndonville (The Former Bag Balm Building) DoNorthCoworking.com

Brought to you by  Northern Vermont UNIVERSITY

Stock Up On Great Fishing Tips From NEK Experts



Kevin Leblanc and his son, Kevin, Jr., fish at Echo Lake in Franconia Notch. (Paul Hayes - Littleton Record)

Each year, Vermont Fish and Wildlife stocks fish in area rivers. They do it to restore fish populations that have declined or disappeared. Sometimes they introduce fish to new areas. And they do it to provide fishing opportunities for area anglers.

What does it take to raise those fish and get them ready for Vermont's rivers and streams? We asked Jud Kratzer, a fisheries biologist at Vermont Fish and Wildlife, to take us through the life cycle of a young fish.

Everything begins at the Salisbury Fish Culture Station in Salisbury, Vermont.

"Salisbury is the hatchery that has most of our brood stock fish for the different species that we stock," Kratzer said. That includes the brown trout, rainbow trout and brook trout commonly stocked in the Northeast Kingdom.

Biologists choose the male and female to "parent" a batch of fish. "There are genetic guidelines, so you can basically calculate how many parents you need to use in order to maintain genetic integrity," Kratzer said.

"They'll take the milt out of the males and eggs out of the females, and then they mix them together in a bowl," Kratzer explained. "After the eggs and the milt have a chance to mix and the eggs become fertilized, then they add water. The eggs absorb the water and that's called water hardening. When they're water hardened, you can transport them safely."

Fish that are destined for the Northeast Kingdom are generally

Fishing continues on **11**

Old Stone House Historic Village – 2019 Season Calendar

Ongoing Classes & Workshops

Blacksmithing, 8-12 Intro class, 1-4 Open Forge, Second Saturday April-October

Community Yoga, 10-11: Every Saturday May 18 -October 12

Kids' Fridays, 11-12: Every Friday June 21 - August 16

Beekeeping Support Group, 4-5: Fourth Sunday May-November



Paint n' Sips

Slate Painting, June 15, 7-9pm, chocolate & wine

Barn Board Art, July 20, 7-9pm, chocolate & wine

Antique Sap Buckets, August 17, 7-9pm, chocolate & wine

Local Music Series

Mark Violette – Parlor Piano, Opening Weekend, May 18, 11-1

Fifth Business – June 8, 4pm

Groove Philter – June 22, 4pm

Pipe & Slippers – July 13, 4pm

Tod Pronto – July 27, 4pm

ETA – August 3, 4pm

Vermont Fiddle Orchestra – August 10, 4pm



Reminiscences (5-6:30 / Potluck)

"Old Engines," June 14

"Centenarians Remember," July 5

Events & Programs for the Community

Robert Grandchamp Civil War Lecture, May 25, 3pm

Steam & Gas Engine Show, June 15, 10-4

Time Travelers' Day Camp, July 22- 26

Old Stone House Day, August 11, 10-4

Stars Party Fundraiser w/Fairbanks Museum, August 30, 4pm

Professional Development Opportunities for Educators

Integrating Outdoor Education Across the Curricula, Instructor Jason Brueck, 2 credits, August 12 -14, 2-7 & August 15 & 16, 8-3:30

StoryKeepers, Instructor Natalie Kinsey-Warnock, 2 credits, August 12 -15, 8-12:30 (with pm hours for independent study)

Adult Enrichment Classes

Timber Framing w/Makaio Maher, June 8 & 9, 8-4; Raising Party at Dailey Memorial Library, August 3

Basket Weaving w/Tracie Quirion, First Saturday, June-September, 10-2

Outdoor Sketching w/Bill Tulp, June 22, July 20, August 3, 1pm

Wings & Strings w/Bill & Laura Tobin, Sunday, July 14, 9am

Basic Wood Carving w/Art Wolff, September 7, 14, & 21, 9-5

Paper Making w/Gretchen Bittner, September 27, 5-7 & September 28, 3-4

Beer Brewing Basics w/Tim Byrne, TBD

Herbal Infusion Techniques w/Marger Maldonado, September 7, 11-12

Healing Salves w/Marger Maldonado, September 28, 11-12

Fall Flower Arrangements w/Marger Maldonado, October 5, 11-12

Flower Crowns & Wreaths for adults and kids w/ Marger Maldonado, October 12, 10-12

Rug Braiding w/Mary Ragno, September 14 & 15, 9:30-3; September 28, 12:30-4:30

Back Roads Readings: July 7, 21 & August 4, 3pm

Gallery Shows – Photographic Collections*



Robert Decker, A Taste of the Kingdom, Sunday, June 30, 1-3

H. Richardson, Sampler, Sunday, August 25, 1-3

Robert Decker, Fall in the Kingdom, Sunday, October 13, 1-3

*Times and themes are subject to change.



Preserve. Educate. Inspire!

Pre-register for classes online: www.OldStoneHouseMuseum.org or call 802-754-2022 for more information.

Fishing

Continued from Page 10

brought to the Bald Hill Fish Culture Station in Newark.

The eggs are placed in stacks of egg trays to mature and incubate, with fresh water trickling down through the trays.

"The hatchery staff go in and pick out the dead eggs and pick out the dead fry as they hatch," Kratzer said. "If you don't do that, then fungus can build up and kill everything."

When the fish hatch from the eggs, they are known as "sac fry," meaning they still have a yolk sac attached to their bellies that provides their sustenance as they grow.

"They stay in the egg trays a little bit longer, but then eventually they move them either to raceways ... or tanks that are indoors," Kratzer said. "They're not even an inch long and they're living off the yolk."

But once the yolk has been absorbed, the fish need to start eating. That's when the fishery staff begins feeding them and monitoring their growth. When they're a couple inches long, they move

them to outside tanks.

"Most of the trout that we stock are one year old when they go out and they're going to be anywhere from seven to 10 inches, depending on the species," Kratzer said. "A brook trout might be seven or eight. And then the browns and rainbows might be eight to 10 inches."

But they do hold on to a certain portion of the fish and raise them for another year, not stocking them until they are two years old. "They cost more time and effort and energy to raise. So we try to limit where we put them for special uses," Kratzer said. "We call them our trophy trout ... there are maybe a dozen river segments around the state where we put them."

The Passumpsic in St. Johnsbury is one of those segments that get the special prize fish.

Kratzer said they have certain criteria they look for in an area where they're putting the two-year-olds.

"The most important is very good public access because we want people to be able to go and fish for them," he said. They also want there to be some deep water in the area so fish can sur-

vive through the winter if they avoid the anglers' hooks. They also look for places where there are lots of anglers in the area. "We want to have a lot of people come and be able to take advantage of these fish and fish for them."

Where to go

In addition to being a biologist, Kratzer is also an avid fisherman, and he was willing to share some of his favorite spots with us.

The Passumpsic in St. Johnsbury is a particularly good location (as is the entire Passumpsic from Lyndonville to the Connecticut River, Kratzer said) because there is so much deep water and it's right in town. "There are trout that hold over for multiple years, so there's a potential to catch a big trout just about anywhere on the river," Kratzer said.

He also recommends any place on a river that is just downstream of a dam.

Fishing continues on 12

Tony Smith, Vt. Fish and Wildlife specialist, helps stock trophy fish in the Passumpsic River near St. Johnsbury's Fred Mold Park May 8. (Photo by Andrew McGregor)



Littleton Food Coop
Just off Exit 41 (I93) in Littleton

ALL ARE WELCOME!

Open **7 AM to 9 PM** Daily
(603) 444 • 2800
littletoncoop.com



Vt. Fish and Wildlife fisheries biologist Jud Kratzer helps stock trophy fish in the Passumpsic River near St. Johnsbury's Fred Mold Park, May 8. (Photo by Andrew McGregor)

Fishing

Continued from Page 11

"I think there's seven dams on the Passumpsic and downstream of each dam there's a nice big pool and those are good places to try."

If you're fishing for trout, the temperature of the water is likely to determine the type of fish you'll find.

"We have lots of brook trout all over the state, but they're mostly confined to the small cold streams," Kratzer said. "If you're out in the summer and you stick your hand in there and it feels cold, there's a good chance there's going to be some wild brook trout in there."

The warmer streams are where you'll find the brown and rainbow trout, which can tolerate warmer temperatures.

Unfortunately, Kratzer said, there are some areas that are now too warm to support any trout at all. "Habitat has been degraded by a variety of things that we humans have done, so there isn't much to fish for in these rivers that have

been degraded."

The Vermont Fish and Wildlife website has maps that show where fish have been stocked and where wild fish are likely to be found.

Kratzer emphasized that while our conversation centered on stocking fish in area rivers, there are ample populations of wild fish to be found. "Most of the trout fishing opportunities that are out there are actually wild fish, and mostly wild brook trout."

Learning to fish

If you are just learning to fish, Kratzer suggested that an easy first step is to visit YouTube. "It's a great place to learn just about anything!"

When you're ready for in-person learning, Vermont Fish and Wildlife has a variety of programs and specialty clinics for all levels from beginners through master anglers.

"But the best way really is to go with someone that knows," Kratzer said. "Encourage people that know how to fish to invite someone out, to take a friend or family member out and help them to learn ... Fishing is a great way to spend time with friends and family."

New Bar, Dining & Banquet Areas
12 Draft & Craft Beers on Tap





St Johnsbury Country Club

A Willie & Mungo Parks & Geoffrey Cornish Design

Come and enjoy one of the iconic golf layouts in the Northeast Kingdom; A 95 year tradition of lush fairways, outstanding greens & memorable views.

The choice is yours... sample one of 18 Craft Beers (10 on Tap) at our new bar, enjoy lunch or dinner in the dining room or relax on the outside deck.

Golf Groups, Business & Private Parties Welcome. With a bar that seats 22 and a banquet room that can accommodate 100+, we are ready and look forward to servicing your group – large or small.

Visit us & rediscover St J all over again.

Public Welcome www.golfstjcc.com

Tues Nite
Mens Golf League

Wed - \$10 Burgers
COLLEGE Nite

Thursday Call First
TRIVIA

Thurs Nite
Lady Golf League

TGI Friday
Teachers Nite

Dogs Welcome
Pints w/ Pups




Call us at: 802.748.9894

NORTHEAST KINGDOM ARTISANS GUILD

DESIGNATED VERMONT STATE CRAFT CENTER

Visit us: Mondays-Saturdays 10:30-5:30
430 Railroad Street, St. Johnsbury, Vermont
802-748-0158 • www.nekartisansguild.com





ST. JOHNSBURY

HISTORY & HERITAGE CENTER



Please plan to visit.

The St. Johnsbury History & Heritage Center celebrates the town's rich legacy.

The Center exhibits, preserves and teaches history to all ages.

Open June-September: Monday-Saturday, 10am-4pm
& October-May: Monday-Wednesday, 10am-4pm

421 Summer Street, St. Johnsbury, VT 05819
802-424-1090 • www.stjhistory.org
stjohnsburyhhc@gmail.com



Levitt AMP Summer Concert Series

For the third year in a row, St. Johnsbury will play host to a series of free concerts featuring nationally-recognized artists, the Levitt AMP St. Johnsbury Music Series at Dog Mountain.

"I curated this series with genre diversity at the forefront of my mind," said series producer, Molly Stone. "Hearing a different genre week to week is like a mini course in human culture and expression. I absolutely love that journey ... I encourage everyone to get to the lawn on show day, no matter who is playing."

The funding for this series has been secured each year for the past three years through public voting, competing with other venues around the country. With cities of various sizes vying for the same funds, it's particularly impressive that a town the size of St. Johnsbury has secured the grant three years running.

"It's that all-hands-on-deck mentality that keeps energy buzzing throughout rural communities," Stone said. "The mission of the Levitt Foundation is to strengthen community life through free, live music. Our folks understand and value that very same thing."

The series is hosted on the lawn at Dog Mountain in St. Johnsbury and dogs are always welcome.

The series features performances across a variety of genres including roots/blues, Celtic rock, Latin dance, rockabilly, Māori music and more.

To see the full schedule check out the ad on Page 5 and visit www.caledonianrecord.com.



La Misa Negra will perform on Aug. 25, 2019 as part of the Levitt AMP St. Johnsbury Music series at Dog Mountain in St. Johnsbury.



LEBLANC FAMILY FARM

1547 Hardwick St., East Hardwick • 472-5557

leblancfamilyfarm@emypeople.net • Jonathan & Rachel LeBlanc

QUANTITY DISCOUNTS:

\$100-\$249.99 = **5% OFF** \$250 or more = **10% OFF**

PRODUCTS:

Whole Chickens and Certified Organic Dairy Beef.
Heirloom Pork, plus 15 Kinds of Homemade Jams & Pickles and Full Selection of Eggs



- Bacon • Chops
- Ribs • Smoked Ham
- Kielbasa • Chorizo
- Bratwurst
- Variety of Sausage Links & Patties

SAMBEL'S TRUCK

Open 7 Days – Joe's Pond

WE CATER!
Call
249-7758

Prime Rib, Seafood,
Whole Belly Clams, the
Best Burgers & More

SAMBEL'S
249-7758

**INTERSECTION RTES. 2
& 15 – DANVILLE**

~ BESIDE THE BEACH ~

BUSINESS HOURS:
Mon.-Thu.
11am-9 pm
Fri. & Sat.
11 am-10 pm
Sun.
11:30 am-9 pm

新世纪 New Century RESTAURANT

264 Portland St., St. Johnsbury, VT
802-748-2338 / 802-748-2336
119 Central St., Woodsville, NH
603-747-3889 / 603-747-3886

WWW.THADDEUSSTEVENSCHOOL.ORG



Still looking for a summer camp?



STEM, trades & leadership camp for middle school girls.

June 24 - July 5, 2019

Contact us today for informational packets and applications.

Academic excellence for over twenty years
United Nations 2019



Independent preschool through eighth grade offering a rigorous and dynamic interdisciplinary program

Financial Aid Available

Accredited by the New England Association of Schools and Colleges | Member of the First Amendment Schools Network
Member of the Vermont Independent Schools Association

(802) 626-0370

www.ThaddeusStevensSchool.org/RosiesGirls

Calendar

Continued from Page 8

Music Series - Groove Philter, The Strong Natural Amphitheater. For info: oldstonehousemuseum.org.

6:30 p.m. - Artist talk with Craig Pursley, Court Street Arts. For info: courtstreetarts.org.

7:00 p.m. - Pine, Old Church Theater. For info: oldchurchtheater.org.

7:00 p.m. - Beatles Return - Studio Two Tribute Band, Haskell Opera House. For info: haskellopera.com.

8:00 p.m. - Kids' movie night on the Green, Danville Green. For info: danvillevtchamber.org.

Sunday, June 23

2:00 p.m. - Strawberry Social, Barton Public Library. For info: barton-public-library.org.

3:00 p.m. - Diagonal Life: Theory and Praxis, Bread and Puppet Theater. For info: breadandpuppet.org.

3:00 p.m. - Pine, Old Church Theater. For info: oldchurchtheater.org.

Monday, June 24

7:30 p.m. - St. Johnsbury Band

Concert, St. Johnsbury Courthouse Bandstand. For info: stjohnsbury-band.org.

Tuesday, June 25

7:30 p.m. - The Birds of Summer, Craftsbury Outdoor Center. For info: townofcraftsbury.com.

Wednesday, June 26

7:00 p.m. - Meeting Your Mind and Beyond: The benefits of applying mindfulness, St. Johnsbury Athenaeum. For info: appliedmindfulnessstraining.org.

7:00 p.m. - MET Encores - La Boheme, Catamount Arts. For info: catamountarts.org.

Thursday, June 27

7:00 p.m. - National Theatre Live, Small Island, Catamount Arts. For info: catamountarts.org.

Friday, June 28

8:00 a.m. - NEMBAFest, Lyndonville. For info: nembafest.com.

7:00 p.m. - Pine, Old Church Theater. For info: oldchurchtheater.org.

7:00 p.m. - Catamount Arts Open Stage - all ages, substance-free, student run, The Cavern. For info: discoverstjohnsbury.com.

8:00 p.m. - The Capitol Steps in concert, Bethlehem Colonial Theatre. For info: bethlehemcolonial.org.

Saturday, June 29

7:00 a.m. - NEMBAFest, Lyndonville. For info: nembafest.com.

10:00 a.m. - Surface Embellishments class, Littleton Studio School. For info: littletonstudioschool.org.

7:00 p.m. - Pine, Old Church Theater. For info: oldchurchtheater.org.

Sunday, June 30

Son of a Swim, The Clubhouse. For info: kingdomgames.co.

7:00 a.m. - NEMBAFest, Lyndonville. For info: nembafest.com.

10:00 a.m. - Resin jewelry class, Littleton Studio School. For info: littletonstudioschool.org.

3:00 p.m. - Diagonal Life: Theory and Praxis, Bread and Puppet Theater. For info: breadandpuppet.org.

3:00 p.m. - Pine, Old Church Theater. For info: oldchurchtheater.org.

Monday, July 1

7:00 p.m. - Miss Maybell and the Jazz Age Artistes perform traditional jazz, York Street Meeting House in

Lyndon. For info: 802-473-4208.

7:30 p.m. - St. Johnsbury Band Concert, St. Johnsbury Courthouse Bandstand. For info: stjohnsbury-band.org.

Tuesday, July 2

1:00 p.m. - Circus Smirkus, Green Mountain Mall. For info: smirkus.org.

6:00 p.m. - Circus Smirkus, Green Mountain Mall. For info: smirkus.org.

7:00 p.m. - National Theatre Live, Small Island, Catamount Arts. For info: catamountarts.org.

7:30 p.m. - Shape Note/Sacred Harp Sings, Bread and Puppet Theater. For info: breadandpuppet.org.

Wednesday, July 3

Family Festival, Mt. Washington Cog Railway Marshfield Station. For info: www.thecog.com

11:00 a.m. - The Patchwork Players, Life On A Plate, Bethlehem Colonial Theatre. For info: bethlehemcolonial.org.

1:00 p.m. - Circus Smirkus, Green Mountain Mall. For info: smirkus.org.

6:00 p.m. - Circus Smirkus, Green Mountain Mall. For info: smirkus.org.

Thursday, July 4

8:30 a.m. - Harry Corrow Freedom Run, North Country Hospital. For info: kingdomgames.co.

10:00 a.m. - North Danville Parade, theme is "Memories"

10:00 a.m. - Newport 4th of July - events throughout the day and evening, Gardner Memorial Park. For info: newportrecreation.org.

5:00 p.m. - Bed Races, Gardner Memorial Park. For info: newportrecreation.org.

Friday, July 5

5:00 p.m. - Independence Day, Burke Mountain. For info: skiburke.com.

5:00 p.m. - Reminiscences Series, Old Stone House Museum. For info: oldstonehousemuseum.org.

5:00 p.m. - Sounds in the Sanctuary, Bethlehem Hebrew Congregation. For info: bethlehemsynagogue.org.

6:00 p.m. - Constellation earrings class, Littleton Studio School. For

info: littletonstudioschool.org.

6:00 p.m. - String Art class, Littleton Studio School. For info: littletonstudioschool.org.

7:00 p.m. - Catamount Arts Open Stage - all ages, substance-free, student run, The Cavern. For info: discoverstjohnsbury.com.

7:30 p.m. - Bread & Puppet show, Bread and Puppet Theater. For info: breadandpuppet.org.

8:00 p.m. - The War & Treaty, Bethlehem Colonial Theatre. For info: bethlehemcolonial.org.

Saturday, July 6

8:30 a.m. - Old Home Day - events throughout the day and evening, Franconia. For info: franconianh.org/old-home-day.html.

8:30 a.m. - Firecracker 5K Fun Run, Franconia. For info: franconianotch.org.

9:00 a.m. - Maxxis Eastern States Cup, Burke Bike Park. For info: easternstatescup.com.

10:00 a.m. - Burklyn Arts Craft Fair, Lyndonville Bandstand Park.

Calendar continues on 15



An Agricultural
Fair Featuring Family
Entertainment

CALEDONIA COUNTY FAIR

August 21-25, 2019

MOUNTAIN VIEW PARK, LYNDONVILLE, VT
EXIT 23 OFF I-91 • www.caledoniacountyfair.com



Pay One Price Admission ... includes
Rides, Entertainment & Admission

WEDNESDAY • AUGUST 21

6:30 PM: Power Wheels,
Van & Team Demo

THURSDAY • AUGUST 22

Children's Day

- 9 AM: Youth Dairy Cattle Show
- 10 AM: Tractor Pull
- 3 PM: ATV & Lawn Tractor Pulls
- 8 PM: "Back In Black" Tailgate Party

AC/DC
Tribute
Band



FRIDAY • AUGUST 23

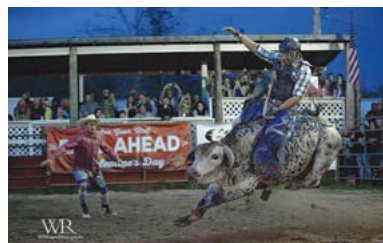
Senior Day

- 2 PM: Kingdom's Got Talent
- 6:30 PM: 4WD Truck Pulls

SATURDAY • AUGUST 24

- 10 AM: Gymkhana
- 11:30 AM: Grand Cavalcade
- 1 & 7 PM: New England Rodeo
- 3:30 PM: Log Loading Competition

Professional Bull Riding and Barrel Racing



SUNDAY • AUGUST 25

- 12 PM: Pig Scramble
- 1 PM: Demo Qualifying
- 6 PM: Demo Finals

ADVANCE SALE TICKETS ONLY \$16! Now Available Online

Wednesday Evening: **\$40 CARLOAD**
Thursday-Sunday: **\$20 AT THE GATE**

Under 36 inches
FREE

GATES OPEN DAILY AT 7:00 A.M. | CAMPING: Larry Norrie 802-626-5462

Let the outside in.

Rustic Elegance for
Body, Home, Lodge,
Camp & Cabin

- Hickory Furniture & Camp Decorations
- Original Artwork
- Antlers & Taxidermy; Moose Heads
- Clothing for Women & Men
- Pendleton, April Cornell, Citron, Icebreaker, Cutloose, Habitat, Salaam, Fat Hat
- Pendleton Blankets
- Fine Wines
- Oriental Rugs
- Jewelry Dept. - Full Service Fred Little, Jeweler

Best Gifts
Best Jewelry



MOOSE RIVER
Lake & Lodge Store

mooseriverlakeandlodgestore.com



OPEN
DAILY Fred & Robin Little, Owners

370 RAILROAD ST., ST. JOHNSBURY, VT
802-748-2423

Calendar

Continued from Page 14

For info: burklyn-arts.org.

10:00 a.m. - Healthy Living Seminars - Alexander Technique, All Saints Episcopal Church. For info: allsts.org.

Sunday, July 7

9:00 a.m. - Maxxis Eastern States Cup, Burke Bike Park. For info: easternstatescup.com.

3:00 p.m. - Back Roads Readings - Reuben Jackson and Garret Keizer, Brownington Congregational Church. For info: backroadsreadings.com.

3:00 p.m. - Diagonal Life Circus & Pageant, Bread and Puppet Theater. For info: breadandpuppet.org.

8:00 p.m. - Bubble & Squeak, Weathervane Theatre. For info:

weathervanetheatre.org.

Monday, July 8

9:30 a.m. - The Moose bike ride, Mike's Tiki Bar. For info: kingdomgames.co.

7:30 p.m. - St. Johnsbury Band Concert, St. Johnsbury Courthouse Bandstand. For info: stjohnsbury-band.org.

Tuesday, July 9

8:30 a.m. - Legendary Lake Region bike ride, Mike's Tiki Bar. For info: kingdomgames.co.

7:30 p.m. - Shape Note/Sacred Harp Sings, Bread and Puppet Theater. For info: breadandpuppet.org.

8:00 p.m. - White Christmas, Weathervane Theatre. For info: weathervanetheatre.org.

Wednesday, July 10

9:30 a.m. - Awareness in the Sanctuary, Bethlehem Hebrew Congregation. For info: bethlehemsyna-

gogue.org.

11:00 a.m. - Preposterous: a Happenstance clown circus, Bethlehem Colonial Theatre. For info: bethlehemcolonial.org.

7:00 p.m. - MET Encores - Il Barbiere di Siviglia, Catamount Arts. For info: catamountarts.org.

8:00 p.m. - Six Dance Lessons In Six Weeks, Weathervane Theatre. For info: weathervanetheatre.org.

Thursday, July 11

6:00 p.m. - Bread & Puppet, Haverhill Corner Common. For info: courtstreetarts.org.

6:30 p.m. - White Mountain Jewish Film Festival - Heading Home: The Story of Team Israel, Bethlehem Hebrew Congregation. For info: bethlehemsynagogue.org.

8:00 p.m. - Six Dance Lessons In Six Weeks, Weathervane Theatre.

Calendar continues on 18



Find your treasure.

HAND CRAFTED JEWELRY
BOOKS ON MEDITATION
ARTISTIC GREETING CARDS




SamadhiStore.com
802.633.4440



Samadhi Store

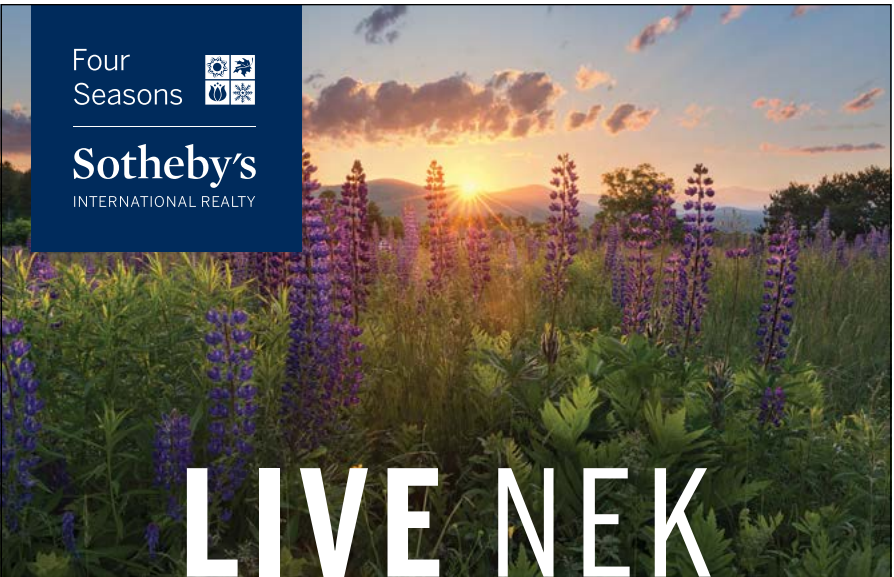
30 CHURCH STREET | BARNET, VERMONT 05821
MON-FRI, 10 AM-4:30 PM | SAT, 11 AM-3:30 PM

Four Seasons



Sotheby's

INTERNATIONAL REALTY



LIVE NEK



MLS#4627869



MLS#4691028

No matter your lifestyle, price point or dream, our respected professionals will help you to find your perfect home.






Connect with our professionals and experience the extraordinary service you deserve.

1184 MAIN STREET | ST. JOHNSBURY, VT | O: 802.751.7582 | FOURSEASONSSIR.COM

Each Office is Independently Owned and Operated.



HARPER'S WEEKLY
JOURNAL OF CIVILIZATION

Blackbass Fishing in the Adirondacks
Title page of Harper's Weekly Cover 1884

ANTIQUE PRINTS and MAPS

- Harper's Weekly 1800s
- Piranesi Roman Ruins
- Sepia Prints
- Botanicals 1800s - 1900s
- Engravings of Vt. & NH
- Audubon Repros
- LIFE Magazines 1970s
- Vermont Life '70s & '80s
- Yankee Magazines 1970s
- Hunting & Fishing 1932

COOKBOOKS

The Framing Format & Gallery

485 Lafayette Street * St. Johnsbury, Vermont
802-748-3964 framin4mat@hotmail.com



YOUR SUMMER ADVENTURE STARTS HERE

From indoor waterparking, outdoor pools and hot tubs, to championship golf, indoor climbing and Vermont's only aerial Tram, we have plenty to both keep you busy or let you unwind.

BOOK YOUR VACATION OR DAY TRIP
JAYPEAKRESORT.COM/DEALS



JAY  PEAK



TEL: 802-334-3400

Jim Campbell
Principal Broker
H: 334-2321
C: 999-7781

Kerry Wervurski
Broker / Realtor
H: 334-5491
C: 673-6656

Ryan Pronto
Broker / Realtor
C: 274-9149

Craig Crawford
Realtor /
Rental Manager
C: 249-5200

Mark English
Managing Broker at Jay
C: 323-9908
O: 988-4000

Jenna Hamelin
Realtor
C: 673-9856

601 East Main Street, Newport, Vermont



JCR 5593 ~ Newport, VT: A magnificent lakefront home is available on International Lake Memphremagog. This property with 1.03 acres has its own great sandy beach with 360 ft. of lake frontage. Superb open floor plan with vaulted ceilings, a catwalk to the covered porch overlooking the water, 4+ bedrooms, 5 baths, hardwood and tiled floors, master suite with large walk-in tiled shower, heated attached garage, end of the road privacy and so much more. Over 6000 sq. ft. of living space.

MLS 4748432 - \$699,000



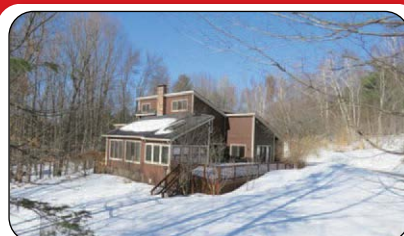
JCR 5391 ~ Newport Town, VT: Beautiful home on Lake Memphremagog, boasting 2.1 acres, approx. 682 ft. of lake frontage and panoramic views overlooking one of Vermont's most prestigious International lakes. High-end materials and superb craftsmanship are evident throughout the 3200+sq. ft. of living space. Open kitchen/dining/living area, 4 bedrooms on main level (to include a spectacular master suite), 3.5 baths and a finished walkout lower level with a spacious family room and guest room. Full aluminum dock makes easy access to superb swimming, fishing and boating. More adjoining acreage is available for purchase as well.

MLS 4658893 - \$699,000



JCR 5572 ~ Derby, VT: Amazing waterfront home! Situated on just under 7 acres with almost 300 ft. of frontage on Lake Salem, this home offers a great deal of charm and character. A positively turn-key property that includes a sandy beach area. Main house has 4 bedrooms, spacious dining room and sunken family room w/radiant heat and a 2-sided propane fireplace. Large garage/workshop with radiant heat and 3 phase power (2 large bedrooms with private baths above) and another detached 2-car garage. 2 separate septic systems, 3 side wrap around deck, sunroom and so much more.

MLS 4734085 - \$549,000



JCR 5585 ~ Derby, VT: Contemporary style home on 1.54 acres in a convenient, but private neighborhood setting. This home has so much to offer with nearly 4500 sq. ft. of finished living area, 3 bedrooms and 4.5 baths. Featuring hardwood floors, vaulted ceilings, sunroom, master suite, guest room, new baseboard heating system, unfinished workshop, attached 28 x 30 garage with a full unfinished area above that would make an ideal studio, in-law suite, etc. and a detached garage/workshop.

MLS 4743209 - \$350,000



JCR 5566 ~ Newport Town, VT: This is a great year-round cottage nestled right on International Lake Memphremagog. A nice lot with 128 ft. of private lake frontage. Home has 3 bedrooms, 2 baths, a full basement, wood fireplace, shed, 32 x 17 deck and a 1-car attached garage. The location is only 25 minutes from Jay Peak Ski & Water Resort and 90 minutes from Montreal Quebec. Great for a family!

MLS 4736081 - \$359,000



JCR 5119 ~ Newport Town, VT: Nestled atop 3.77 acres overlooking beautiful lake views and the surrounding mountain ranges, this contemporary style home features 3 bedrooms, 2.5 baths, a spacious open floor plan and panoramic long range views from every room in the house. Impeccable condition throughout, cedar siding, vaulted ceilings, hardwood floors, 2 propane fireplaces, spacious master ensuite, custom built cabinetry, granite counter tops and much more. For the hobbyist, you'll love the detached 28 x 40 garage/shop.

MLS 4734547 - \$392,500



JCR 5451 ~ Newport, VT: The view, the spot just doesn't get any better from this 4-season lakefront cottage. Extensively renovated with 2 bedrooms, 2 guest rooms and 3 updated bathrooms. The guest apartment over the 2-car attached garage is ideal for guests or extended family. You'll enjoy the boating, swimming, sailing, fishing, snowmobiling, skiing and so much more on Lake Memphremagog. Some updates include On Demand Hot Water, new deck, washer & dryer, kitchen appliances, exterior siding, new roof and the list goes on.

MLS 4679659 - \$379,900



JCR C-5267 ~ Derby, VT: Here's your opportunity to own prime commercial real estate on the heaviest traveled road in Orleans County, VT. This property features over 220 ft. of prime road frontage on busy US Rte. 5 with just over 5 acres of perfectly flat area to start your own business. Currently there are 2 established curb cuts allowing for one or more businesses. Currently a retail business with 2 large structures. Front building has 4 rental units and the back building is a large commercial type garage/shop.

MLS 4612487 - \$479,000



JCR 5555 ~ Derby, VT: Location, location, location! Expansive 4 bedroom, single story ranch style home on a well manicured .52 acre lot. Enjoy the convenience of one-level living in this recently renovated home. Spacious main living area, dining area with slider to the rear deck and a large living room with hardwood floors and bright windows to capture the long range views of Jay Peak and partial views of Lake Memphremagog, 23 x 25 two-car garage with direct entry to the house. Great yard for pets, children, gardening alike.

MLS 4727476 - \$178,500



JCR J-163 ~ Jay, VT: Here you go, this 3 bedroom, 2 bath home is just over a mile from Jay Peak Resort (1.3 miles to be exact). From the upstairs level you can sit and watch the tram travel up and down the mountain. With 1984 sq. ft. of living space and baseboard propane heat, this home is ideal for your Jay Peak ski house or for your primary residence. .37 acre corner lot with river frontage. Lots of updates have been done to the interior.

MLS 4654128 - \$165,000

WWW.JIMCAMPBELLREALESTATE.COM

LITTLE VILLAGE
Toy & Book Shop

603-444-4TOY (4869)
 81 B Main Street
 Littleton, NH 03561
 Monday-Saturday 9-6
 Sunday 9-5
 LITTLEVILLAGETOY.COM

CHILDREN'S BOOKS • ADULT BOOKS
 LOCAL AUTHORS
 GAMES • TOYS • ARTS & CRAFTS • CARDS
 GIFT SHOP

Mittersill Alpine Resort.
 A four-seasons resort in scenic Franconia Notch, N.H.
 A great vacation spot and family get-a-way!

Nearby great outdoor summer adventures!
 Minutes from all area
 White Mountain attractions & Hiking - Biking - Great Trails - Golf Zip Lines & More
 *Discount Golf vouchers for registered guests.

Mittersill™ Established 1945

I-93 Exit 34C | 193 Mittersill Road | Franconia, NH 03580
 www.mittersillresort.com | info@mittersillresort.com | 603-823-5511

ABBOTT
 RENTAL & PARTY STORE

502 Union Street, Littleton, NH
 603-444-6557 • 800-287-6557
 abbottrental.com

bella funk boutique
 www.bellafunkboutique.com
 Citizens of Humanity
 Johnny Was
 Hudson
 Eileen Fisher
 Free People
 Frye

Newly expanded – double the size, double the inventory! Same great location.

9 Main Street, Littleton, NH 603-444-6597

Calendar

Continued from Page 15

For info: weathervanetheatre.org.

Friday, July 12

NFCT Clyde River Volunteer Weekend - help build out the Northern Forest Canoe Trail, Clyde River. For info: northernforestcanoetrail.org.

2:00 p.m. - Genealogy Meet Up, Littleton. For info: littletonareachamber.com.

5:30 p.m. - Bruno Groening Community Hour, Catamount Arts. For info: 802-748-9545.

6:00 p.m. - Family game night, Littleton Community Center. For info:

littletonareachamber.com.

6:30 p.m. - Jay Peak Music Series - Gov't Mule, Stateside Amphitheater. For info: jaypeakresort.com.

7:00 p.m. - Catamount Arts Open Stage - all ages, substance-free, student run, The Cavern. For info: discoverstjohnsbury.com.

7:30 p.m. - Bread & Puppet show, Bread and Puppet Theater. For info: breadandpuppet.org.

8:00 p.m. - The Grackles, The Loading Dock. For info: theloadingdocknh.com.

8:00 p.m. - White Christmas, Weathervane Theatre. For info: weathervanetheatre.org.

9:00 p.m. - Outdoor Movie Screening, Prouty Beach. For info:

newportrecreation.org.

Saturday, July 13

NFCT Clyde River Volunteer Weekend - help build out the Northern Forest Canoe Trail, Clyde River. For info: northernforestcanoetrail.org.

4:00 p.m. - Old Stone House Music Series - Pipe and Slippers, Samuel Read Hall House. For info: oldstonehousemuseum.org.

7:30 p.m. - North Country Chamber Players - Miho Saegusa, Sugar Hill Meetinghouse. For info: northcountrychamberplayers.org.

8:00 p.m. - Lady Day at Emerson's Bar & Grill, Weathervane Theatre. For info: weathervanetheatre.org.

Sunday, July 14

3:00 p.m. - Diagonal Life Circus & Pageant, Bread and Puppet Theater. For info: breadandpuppet.org.

4:00 p.m. - North Country Chamber Players - Miho Saegusa, Mountain View Grand Resort. For info: northcountrychamberplayers.org.

Monday, July 15

7:30 p.m. - St. Johnsbury Band Concert, St. Johnsbury Courthouse Bandstand. For info: stjohsburyband.org.

8:00 p.m. - White Christmas, Weathervane Theatre. For info: weathervanetheatre.org.

Tuesday, July 16

In Search of Memphis swim, Lake Memphremagog. For info: kingdomgames.co.

6:00 p.m. - Nunavut: An Arctic Shorebird Study, NorthWoods Stewardship Center. For info: northwoodscenter.org.

7:30 p.m. - Sunset & Full Moon Paddle, NorthWoods Stewardship Center. For info: northwoodscenter.org.

7:30 p.m. - Shape Note/Sacred Harp Sings, Bread and Puppet Theater. For info: breadandpuppet.org.

8:00 p.m. - Six Dance Lessons In Six Weeks, Weathervane Theatre. For info: weathervanetheatre.org.

Wednesday, July 17

9:30 a.m. - Awareness in the Sanctuary, Bethlehem Hebrew Congregation. For info: bethlehemsynagogue.org.

11:00 a.m. - Mr. Aaron's Intergalactic Spectacular, Abbie Greenleaf Library. For info: franconianotch.org.

11:00 a.m. - The Patchwork Players - The Adventures of Tommie Sawyer, Bethlehem Colonial Theatre. For info: bethlehemcolonial.org.

4:00 p.m. - Books of Jewish Interest Club - The Plot Against America by Philip Roth, Bethlehem Hebrew Congregation. For info: bethlehemsynagogue.org.

4:00 p.m. - Author Talk and Book Signing - Charles Fergus, St. Johnsbury Athenaeum.

7:00 p.m. - MET Encores - Aida, Catamount Arts. For info: catamountarts.org.

8:00 p.m. - Lady Day at Emerson's Bar & Grill, Weathervane Theatre. For info: weathervanetheatre.org.

Thursday, July 18

7:00 p.m. - Into the Woods, Hyde Park Opera House. For info: lclayers.com.

8:00 p.m. - White Christmas, Weathervane Theatre. For info: weathervanetheatre.org.

Friday, July 19

5:00 p.m. - Michael Amowitz concert, Bethlehem Hebrew Congregation. For info: bethlehemsynagogue.org.

7:00 p.m. - Into the Woods, Hyde Park Opera House. For info: lclayers.com.

7:00 p.m. - Catamount Arts Open Stage - all ages, substance-free, student run, The Cavern. For info: discoverstjohnsbury.com.

7:30 p.m. - Bread & Puppet show, Bread and Puppet Theater. For info: breadandpuppet.org.

8:00 p.m. - Six Dance Lessons In Six Weeks, Weathervane Theatre. For info: weathervanetheatre.org.

Saturday, July 20

**CARPET • RUGS • WOOD
 TILE & STONE • VINYL
 COUNTERTOPS**

Stunning 7,000 Sq. Ft. Showroom
 Commercial/Residential • Expert Installation
 Free Design Consultation

The FLOORWORKS

2190 Main St., Bethlehem, NH • Phone: 603-869-5880
 Hours: Mon-Fri 8-5; Sat 9-3 • www.thefloorworks.com

EAMES REALTY COMPANY

★ Apartment Rentals
 ★ Office Space
 ★ Commercial Storefronts

- Best Prices
- Prime Locations
- Responsive, full-time maintenance staff
- Serving the North Country Since 1926

For availability please call:
 (603) 444-6944 ext. 22 or find us on the web at: www.eamesrealtyco.com

32 MAIN STREET, LITTLETON, NH 03561

www.eamesrealtyco.com

Calendar continues on 19

Calendar

Continued from Page 18

9:00 a.m. - Stars & Stripes Festival, Lyndonville. For info: lyndonvermont.com.

9:00 a.m. - Texas Hold'em Tournament, Westfield Community Center. For info: 802-744-9927.

1:00 p.m. - Astronomy Extraganza - celebrating the 50th anniversary of the lunar landing, Fairbanks Museum. For info: fairbanksmuseum.org.

1:00 p.m. - Jeezum Crow Festival, Jay Peak Stateside Amphitheater. For info: jaypeakresort.com.

2:00 p.m. - Lady Day at Emerson's Bar & Grill, Weathervane Theatre. For info: weathervanetheatre.org.

7:00 p.m. - Into the Woods, Hyde Park Opera House. For info: lcplayers.com.

7:00 p.m. - David and the Zookeepers, Haskell Opera House. For info: haskellopera.com.

7:30 p.m. - North Country Chamber Players - From Barber to Bluegrass, Sugar Hill Meetinghouse. For info: northcountrychamberplayers.org.

8:00 p.m. - The Quebe Sisters concert, Bethlehem Colonial Theatre. For info: bethlehemcolonial.org.

8:00 p.m. - Lady Day at Emerson's Bar & Grill, Weathervane Theatre. For info: weathervanetheatre.org.

9:00 p.m. - Date movie night on the Green, Danville Green. For info: danvillevtchamber.org.

Sunday, July 21
2:00 p.m. - Into the Woods, Hyde Park Opera House. For info: lcplayers.com.

3:00 p.m. - Back Roads Readings - Deborah Warren and Rachel Hadas, Brownington Congregational Church. For info: backroadsreadings.com.

3:00 p.m. - Diagonal Life Circus

& Pageant, Bread and Puppet Theater. For info: breadandpuppet.org.

4:00 p.m. - North Country Chamber Players - From Barber to Bluegrass, Mountain View Grand Resort. For info: northcountrychamberplayers.org.

Monday, July 22
7:30 p.m. - St. Johnsbury Band Concert, St. Johnsbury Courthouse Bandstand. For info: stjohnsburyband.org.

8:00 p.m. - Spring Awakening in Concert, Weathervane Theatre. For info: weathervanetheatre.org.

Tuesday, July 23
7:30 p.m. - The Insects of Summer, Craftsbury Outdoor Center. For

info: townofcraftsbury.com.

7:30 p.m. - Shape Note/Sacred Harp Sings, Bread and Puppet Theater. For info: breadandpuppet.org.

8:00 p.m. - The Drowsy Chaperone, Weathervane Theatre. For info: weathervanetheatre.org.

Wednesday, July 24
9:30 a.m. - Awareness in the Sanctuary, Bethlehem Hebrew Congregation. For info: bethlehemsynagogue.org.

11:00 a.m. - Under A Starry Sky: Nocturnal Animals, Abbie Greenleaf Library. For info: franconianotch.org.

11:00 a.m. - Jason Tardy, Bethlehem Colonial Theatre. For info: bethlehemcolonial.org.

7:00 p.m. - Meeting Your Mind and Beyond: The benefits of applying mindfulness, St. Johnsbury Athenaeum. For info: appliedmindfulnessstraining.org.

8:00 p.m. - The Drowsy Chaperone, Weathervane Theatre. For info: weathervanetheatre.org.

Thursday, July 25
4:00 p.m. - Books of Jewish Interest Club - Bethlehem Road Murder by Batya Gur, Bethlehem Hebrew Congregation. For info: bethlehemsynagogue.org.

6:30 p.m. - White Mountain Jewish Film Festival - The History

Calendar continues on 23



POLLY'S PANCAKE PARLOR
SUGAR HILL, NEW HAMPSHIRE

**NOW OPEN
YEAR ROUND 7AM**

**Our own Stone-Ground
Whole Grain Pancakes
served with
Pure Maple Products!**

Pancakes • Waffles • Bread • Pie
Sandwiches • Salads • Soups • Quiche

**All Homemade
Great Food, Great Service,
Great View**

Mail Order Year Round,
1-93 Exit 38, 672 Rt. 117
Sugar Hill, NH
603-823-5575

www.pollyspancakeparlor.com

Topic of the Town
FAMILY RESTAURANT


**30 MAIN STREET
LITTLETON
603-444-6721**

**Gift
Certificates
Available**

★ Everyday is Senior Discount Day 60+ 10%
★ Daily Lunch - \$4.99 Blue Plate Special (tax included)
★ Wednesday is Buffet Night - 5 pm

www.thetopicofthetown.com

BREAKFAST • LUNCH • DINNER
Sun. 6am-noon • Mon.-Tue.-Thu. 6am-2pm • Wed.-Fri.-Sat. 6am-8pm



**Stockley
Trucking**
INC.



Buying All Metals

Steel • Brass • Copper • Aluminum

Monday-Friday, 7-4 • Saturday, 8-Noon

405 S. Main Street, Lisbon, NH 03585
Phone: 603-838-2860 • www.stockleytrucking.com

"Buying Metal Salvage"



**JAX JR.
CINEMAS**

MAIN STREET • LITTLETON, NH • JAXJRCINEMAS.COM

ADULT \$8 • CHILD/SENIOR \$6 • PRE-SHOW TRIVIA • GIFT CERTIFICATES

SHOWTIMES IN BOTH CINEMAS				
Monday–Thursday	—	—	7:00pm	—
Friday	—	—	7:00pm	9:15pm
Saturday	1:00pm	4:00pm	7:00pm	9:15pm
Sunday	1:00pm	4:00pm	7:00pm	—



For more information about
current movies call **444-5907**
for a recorded message.



Visit our website at **jaxjrcinemas.com**

NH'S FIRST ALL-DIGITAL 3D-EQUIPPED MOVIE THEATER!



details

*Inspiring design
for interior spaces*



detailsinteriorfashion@gmail.com
detailsinteriorfashions.com

106 Main St., Littleton, NH / P: 603-444-7444 / F: 603-444-7791



Kingdom Trails offers unparalleled views and riding challenges. (Photo courtesy of Kingdom Trails Facebook)

Landowners: The Most Important Resource For Kingdom Trails

There are hundreds of things that make the Kingdom Trails network special – specifically, each mile of the hundreds of miles of serene trails open to mountain bikers each summer.

The system has even been called the “best trail network in North America” by Bike Magazine.

But all of that goodness is dependent on one resource: the good will of the landowners who allow Kingdom Trails to use their property as part of the trail system.

Which led us to wonder – why do they do it?

While landowners receive a free KTA membership and discounts at a variety of local businesses, the real benefits are in community building.

Jill and Tom Broderick own land on Darling Hill and have been partnering with KTA for at least 10 years. In a recent phone interview, Jill said she finds sharing her land with trail users to be “delightful.”

Trails continues on 21



Perfect for:

Wedding Receptions • Bridal Showers
Jack & Jill Parties • Rehearsal Dinners
Business Meetings • Funeral Gatherings

Customized Menu • Private Room • Competitive Rates



St. Johnsbury Elks Lodge
118 Western Avenue ~ St. Johnsbury, VT
802.748.3785



*Northern
New England's
Museum of
Natural History*



BE INSPIRED!

Shippee Family Eye Care Butterfly House Is Alive All Summer!

OPEN DAILY 9 AM - 5 PM
Planetarium Presentations Every Day!
Fairbanksmuseum.org
802-748-2372

1302 Main Street
St. Johnsbury, Vermont

Trails

Continued from Page 20

"Most of the trail that's on our property is down in our woods, but then it comes out a little bit into a corner of our field and front lawn," she said. "You hear people, you see people riding up the hill. You hear them calling to each other, laughing."

"They're outside, enjoying fresh air and getting exercise," she continued. "People will ride by us and say 'good morning,' or even 'bonjour.' They'll say 'thank you' because they know they're on your land."

While KTA is responsible for all trail maintenance, the Brodericks take pleasure in enlivening their bit of the trail and the enjoyment that gives to riders.

"I put gnome houses at the base of some of the trees – they look like elf houses," Jill said. "The adults ride by them and don't even notice. But the kids always stop and the sound travels up the hill. I have my office in my home and my window will be open in the summer. I can hear the voices. I can't hear what they're saying, but you can tell that everyone has stopped and they're talking. It's just wonderful!"

Donating the use of their land to KTA was an easy decision for the Brodericks.

"I don't know why, if you have the opportunity to share something like this, you wouldn't take advantage of it," Jill said. "It's such a win-win situation. The people you've invit-

Trails continues on **22**



Kingdom Trails offers trails for all levels of ability. (Photo courtesy of Kingdom Trails Facebook)

Rowell's Sugarhouse

Visit our Real Vermonter's Sugarhouse and see where we make our delicious Maple Syrup. We also have antique sugaring memorabilia and a huge syrup pitcher exhibit.

In our gift shop & gallery you will find our Vermont maple products, jams & jellies, cheese, honey, Vermont arts, crafts & woodturning, baskets, whirligigs, Vermont shirts & souvenirs. Antiques, collectibles & much more.

4962 Vt. Route 15 • Walden, VT 05873
(Between West Danville & Hardwick)

OPEN 7 DAYS A WEEK YEAR ROUND • 802-563-2756
Great Selection – Reasonable Prices
"A Real Vermonter's Sugarhouse"

CRAFT BEER 🍷 LOCAL FOOD 🍷 VERMONT SPIRITS





Kingdom Taproom introduces their newest venture in downtown St. Johnsbury.

Kingdom Table's eclectic menu taps into the bounty of local producers, growers and processors.



**397 Railroad Street
St. Johnsbury**

KingdomTaproom.com
Open Every Day!

802-424-1355



802-424-1455

CRAFT BEER 🍷 LOCAL FOOD 🍷 VERMONT SPIRITS

DALTON MOUNTAIN MOTORSPORTS

475 Main Street
Lancaster, NH

603-788-4991

245 Jericho Road
Berlin, NH

603-215-6217

www.daltonmountainmotorsports.com



Open 7 Days a Week During Riding Season
5 STAR SERVICE DEPARTMENT

Trails

Continued from Page 21

ed onto your land are enjoying it. It's joyful! It's delightful to have people. I suppose you wouldn't want them riding right by your front door. You want privacy, but we have plenty of room."

And, she said, KTA has been great to work with. When the Brodericks built a pond on their property, KTA rerouted the trail further into the woods.

"They're mindful that you do want a certain amount of privacy," Jill said.

She was impressed last summer when a load of gravel showed up on their property. "I said to Tom, 'What is that down there by the stop sign?' He said Kingdom Trails called and they need to do a little maintenance and asked if it was okay. They had it dumped there and it was gone a week later!"

CJ Scott is the trails manager at Kingdom Trails.

"I think [people let us use their land] because they see how it benefits the community and how it brings people in. It helps grow the business opportunities and economic development here in the area," Scott said. "It gets people out on the trails. It gives people a healthy avenue to pursue the outdoors."

Sometimes KTA reaches out to people they'd like to bring into the landowner system, other times landowners approach KTA. "It goes both ways," Scott said. "We maintain all of the trails on all of

the landowners' property."

BEING A GOOD STEWARD OF THE TRAIL SYSTEM

If you're headed out onto the Kingdom Trails system, it's important to be a good guest so landowners will continue to donate the use of their land. Here are some tips for being a good steward:

— Stay on the trail - An unbroken field just off the path might look inviting, but landowners have only consented to allow you to use the marked trail, so please stay on it.

— Take out what you bring in - Please don't litter.

— Keep your hands to yourself - Some trails may pass near livestock, but they are not part of the trail system. Please do not harass them.

— Be friendly but don't overstay your welcome - If you see a landowner, it's always nice to say hello and offer your gratitude. Also remember that this is their home and please respect their privacy.

"All of that is key to our success," Scott said. "If we get disgruntled landowners from visitors who are misbehaving, that can start to trickle down and cause some potential problems in the future for maintaining the existing network and expanding it."

In general, though, users are good about respecting the trails and the landowners, he said.

"We've been able to keep a good relationship with our landowners and we pride ourselves on making sure that their needs are met. We're super grateful that they allow us access and we strive to make sure that they're happy. They are the most important part of this entire resource."

FOOD FARM & FUN

Lancaster FAIR

Where Friends & Family Meet

August 29th - September 2nd

PAY ONE PRICE RIDES
A LABOR DAY TRADITION
(603) 788-4531

MARK CHESNUTT,
ATV PULLS, DEMO
DERBY, 4X4 PULL,
BIG RIG TRUCK PULL
AND MUCH MORE.....

149th
YEAR

www.lancasterfair.com

THE VILLAGE GUN STORE

FULL-LINE BROWNING DEALER

Also Carrying: Benelli, CZ, Kimber, Colt, Glock,
Ruger and Many Others

Veteran/Family owned and run.

We buy, sell, trade and take consignments.

Competitive Prices

COLLECTIBLE ANTIQUE MILITARY ARMS & EQUIPMENT

**Anniversary
Sale
In June**

Hours: Tues. - Thurs. 10 a.m. - 5 p.m.

Friday 10 a.m. - 6 p.m.

Saturday 9 a.m. - 6 p.m.

Sun. & Mon. Closed



The Village Gun Store, Inc.

"Carrying on a proud patriotic tradition"

Joshua & Nicole D'Agnese, Owners

4 King's Square

Whitefield, NH 03598

(603) 837-2345

villagegun@myfairpoint.net
villagegun.com



Calendar

Continued from Page 19

of Love, Bethlehem Hebrew Congregation. For info: bethlehemsynagogue.org.

7:00 p.m. - Artist talk, Dewitt Mallary, Court Street Arts. For info: courtstreetarts.org.

7:00 p.m. - Into the Woods, Hyde Park Opera House. For info: lcplayers.com.

8:00 p.m. - White Christmas, Weathervane Theatre. For info: weathervanetheatre.org.

Friday, July 26

7:00 p.m. - Into the Woods, Hyde Park Opera House. For info: lcplayers.com.

7:00 p.m. - Catamount Arts Open Stage - all ages, substance-free, student run, The Cavern. For info: discoverstjohnsbury.com.

7:30 p.m. - Bread & Puppet show, Bread and Puppet Theater. For info: breadandpuppet.org.

8:00 p.m. - The Drowsy Chaperone, Weathervane Theatre. For info: weathervanetheatre.org.

8:45 p.m. - Outdoor movie screening, Prouty Beach. For info: newportrecreation.org.

Saturday, July 27

7:30 a.m. - Kingdom Swim, Prouty Beach. For info: kingdomgames.co.

10:00 a.m. - Coloring cloth with paint & pigment, Littleton Studio School. For info: littletonstudioschool.org.

2:00 p.m. - Six Dance Lessons In Six Weeks, Weathervane Theatre. For info: weathervanetheatre.org.

4:00 p.m. - Old Stone House Music Series - Tod Pronto, Samuel Read Hall House. For info: oldstonehousemuseum.org.

7:00 p.m. - Into the Woods, Hyde Park Opera House. For info: lcplayers.com.

8:00 p.m. - A Summer Evening with Natalie Merchant, Bethlehem


Calendar continues on 24

The Inn at Whitefield RESTAURANT & PUB

Next to the Weathervane

OPEN FOR DINNER
Call for Reservations
603-837-2400

Available for Groups or Large Parties



Waumbek Golf Club
Est. 1895 - New Hampshire's Oldest 18-Hole Golf Course.
Rt. 2 & 115A, Jefferson, NH • 603-586-7777

*Spectacular views of the Presidential Range.
Come play our historic, challenging,
bucket list course!*

Oldest Tractor Sales & Service In Lancaster, NH



107 Summer Street, Lancaster, NH
603-788-4577

JON PARKS TRACTOR



Santa's Village

Pure Joy. Family Style.

TRAVELERS' CHOICE
tripadvisor

A Top 25 U.S. Amusement Park
#1 in New England—over 5 years

santasvillage.com
Route 2, Jefferson, NH 603-586-4445



GRIME NURSERY & GREENHOUSE

533 Lawrence Road, Waterford, Vt.



Jade Grime

We have seven greenhouses packed full of a HUGE variety of ...

- Annuals & Perennials
- Flowers, Veggies & Herbs
- Blueberry Bushes
- Shrubs
- Hanging Baskets
- Fruit & Shade Trees

Plant & design your own or let our talented and experienced team do it for you!

Directions: Rt. 18 to Old County Road (town hwy. 12) up hill 9/10 mile, go right onto Lawrence Road first place on right.

Hours: Monday-Saturday 9-5 • Sunday 9-3

802-748-1915

grimenursery@waterfordvt.net

Calendar

Continued from Page 23

Colonial Theatre. For info: bethlehemcolonial.org.

8:00 p.m. - Six Dance Lessons In

Six Weeks, Weathervane Theatre. For info: weathervanetheatre.org.

Sunday, July 28

10:00 a.m. - Kingdom Swim, Prouty Beach. For info: kingdomgames.co.

10:00 a.m. - Keumboo Cuffs

NEK ADVENTURES

Vermont's only guided ATV Tours

Guided Tours include: ATV, Helmet and Guide



NEK Adventures offers guided ATV tours during spring, summer, and fall months on over 150 miles of trail in the Northeast Kingdom of Vermont.

St. Johnsbury, VT 802.748.7841

NEKAdventures.com

class, Littleton Studio School. For info: littletonstudioschool.org.

2:00 p.m. - Into the Woods, Hyde Park Opera House. For info: lcplayers.com.

3:00 p.m. - Diagonal Life Circus & Pageant, Bread and Puppet Theater. For info: breadandpuppet.org.

4:00 p.m. - North Country Chamber Players - Branford Marsalis, Maplewood Resort. For info: northcountrychamberplayers.org.

Monday, July 29

7:30 p.m. - St. Johnsbury Band Concert, St. Johnsbury Courthouse Bandstand. For info: stjohsburyband.org.

8:00 p.m. - Six Dance Lessons In Six Weeks, Weathervane Theatre. For info: weathervanetheatre.org.

Tuesday, July 30

7:30 p.m. - Shape Note/Sacred Harp Sings, Bread and Puppet Theater. For info: breadandpuppet.org.

8:00 p.m. - Lady Day at Emerson's Bar & Grill, Weathervane Theatre. For info: weathervanetheatre.org.

Wednesday, July 31

9:30 a.m. - Awareness in the Sanctuary, Bethlehem Hebrew Congregation. For info: bethlehemsynagogue.org.

11:00 a.m. - Modern Times Puppet Theater, Abbie Greenleaf Library. For info: franconianotch.org.

11:00 a.m. - The Patchwork Players - Billy Goats Gruff, Bethlehem Colonial Theatre. For info: bethlehemcolonial.org.

8:00 p.m. - Spring Awakening in Concert, Weathervane Theatre. For info: weathervanetheatre.org.

Thursday, August 1

5:30 p.m. - North Country Chamber Players benefit auction concert and feast, The Inn At Sunset Hill. For info: northcountrychamberplayers.org.

7:00 p.m. - Comedy of Errors, outdoor amphitheater at St. Johnsbury Academy, rain location in the Stuart Black Box Theatre. For info: jwarner-ashley@stjacademy.org.

8:00 p.m. - Bright Star, Weathervane Theatre. For info: weathervanetheatre.org.

Friday, August 2

8:30 a.m. - Summer Corps Celebration, North Woods Stewardship Center. For info: northwoodscenter.org.

5:30 p.m. - Ensemble Aubade concert, Bethlehem Hebrew Congregation. For info: bethlehemsynagogue.org.

7:00 p.m. - Comedy of Errors, outdoor amphitheater at St. Johnsbury Academy, rain location in the Stuart Black Box Theatre. For info: jwarner-ashley@stjacademy.org.

Calendar continues on 25

ORLEANS COUNTY FAIR

278 ROARING BROOK ROAD, BARTON, VT • 802-525-3555
"Bringing Agriculture and Family Entertainment Together Since 1837"

CELEBRATING 152 YEARS!

AUGUST 14-18, 2019

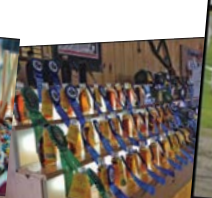
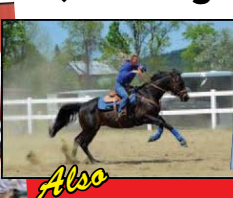
www.orleanscountyfair.net



Carnival Rides & Games, Demo Derby (Youth & Adult), Burn Out Competition, 4x4 Truck Pulls, Antique/Farm Stock Pulls, Harness Racings, Horse and Pony Pulls, Gymkhana, Open Horse Shows and Dairy Shows, Milking Parlor Exhibits, Farm Animals, 4-H Exhibits, Children's Little Farm Hands Exhibit, Floral Hall Exhibits, Maple Sugar House, Beer and Wine Garden with Live Music, Carving and Much, Much More!

Also

COME TO OUR 4th OF JULY FESTIVITIES!



Calendar

Continued from Page 24

7:00 p.m. - The Lion, the Witch and the Wardrobe, Old Church Theater. For info: oldchurchtheater.org.

7:00 p.m. - Catamount Arts Open Stage - all ages, substance-free, student run, The Cavern. For info: discoverstjohnsbury.com.

7:30 p.m. - Bread & Puppet show, Bread and Puppet Theater. For info: breadandpuppet.org.

8:00 p.m. - Bright Star, Weather-vane Theatre. For info: weather-vanetheatre.org.

Saturday, August 3

8:00 a.m. - Top Notch Triathlon, Cannon Mountain. For info: cannon-mt.com.

9:00 a.m. - Annual Clan of the Hawk Gathering - dancing and drumming, talking circle, naming ceremony and more. Clan of the Hawk, 123 Evansville Road, Brown-ington. For info: 802-754-2817.

10:00 a.m. - Healthy Living Seminars - Addiction discussion panel, All Saints Episcopal Church. For info: allsts.org.

10:00 a.m. - Crescent earrings in a day class, Littleton Studio School. For info: littletonstudioschool.org.

2:00 p.m. - White Christmas, Weather-vane Theatre. For info: weather-vanetheatre.org.

4:00 p.m. - Old Stone House Music Series, The Strong Natural Amphitheater. For info: oldstone-housemuseum.org.

6:30 p.m. - Jay Peak Music Series - Greensky Bluegrass, State-

side Amphitheater. For info: jay-peakresort.com.

7:00 p.m. - Comedy of Errors, outdoor amphitheater at St. Johnsbury Academy, rain location in the Stuart Black Box Theatre. For info: jwarner-ashley@stjacademy.org.

7:00 p.m. - The Lion, the Witch and the Wardrobe, Old Church Theater. For info: oldchurchtheater.org.

7:30 p.m. - North Country Chamber Players - Romance to Revolution, Sugar Hill Meetinghouse. For info: northcountrychamberplayers.org.

8:00 p.m. - White Christmas, Weather-vane Theatre. For info: weather-vanetheatre.org.

Sunday, August 4

2:00 p.m. - Comedy of Errors, Stuart Black Box Theatre at St. Johnsbury Academy. For info: jwarner-ashley@stjacademy.org.

3:00 p.m. - Back Roads Readings - Robert Pinsky, Brownington Congregational Church. For info: backroadsreadings.com.

3:00 p.m. - Diagonal Life Circus & Pageant, Bread and Puppet Theater. For info: breadandpuppet.org.

3:00 p.m. - The Lion, the Witch and the Wardrobe, Old Church Theater. For info: oldchurchtheater.org.

4:00 p.m. - North Country Chamber Players - Romance to Revolution, Mountain View Grand Resort. For info: northcountrychamberplayers.org.

Monday, August 5

7:30 p.m. - St. Johnsbury Band Concert, St. Johnsbury Courthouse Bandstand. For info: stjohsbury-band.org.

8:00 p.m. - Lady Day at Emerson's Bar & Grill, Weather-vane Theatre. For info: weather-vanetheatre.org.

Tuesday, August 6

7:30 p.m. - Shape Note/Sacred Harp Sings, Bread and Puppet Theater. For info: breadandpuppet.org.

8:00 p.m. - Bright Star, Weather-vane Theatre. For info: weather-vanetheatre.org.

Wednesday, August 7

11:00 a.m. - Modern Times Theater, Bethlehem Colonial Theatre. For info: bethlehemcolonial.org.

6:00 p.m. - Village Harmony, Haverhill Corner Common. For info: courtstreetarts.org.

6:00 p.m. - Bretzfelder Park Series kick-off - pizza and live music for dancing, Bretzfelder Park. For info: therocks.org.

8:00 p.m. - White Christmas, Weather-vane Theatre. For info: weather-vanetheatre.org.

Thursday, August 8

6:00 p.m. - White Mountain Jewish Film Festival - The German Doctor, Bethlehem Hebrew Congregation. For info: bethlehemsynagogue.org.

8:00 p.m. - The Drowsy Chaperone, Weather-vane Theatre. For info: weather-vanetheatre.org.

Friday, August 9

Danville Town Fair, Danville Green. For info: danvillevtchamber.org.

2:00 p.m. - Genealogy Meet Up, Littleton. For info: littletonareachamber.com.

6:00 p.m. - Strangefolk Garden of Eden Festival, Jay Peak State-

side Amphitheater. For info: jay-peakresort.com.

7:00 p.m. - The Lion, the Witch and the Wardrobe, Old Church Theater. For info: oldchurchtheater.org.

7:00 p.m. - Catamount Arts Open Stage - all ages, substance-free, student run, The Cavern. For info: discoverstjohnsbury.com.

7:30 p.m. - Bread & Puppet show, Bread and Puppet Theater. For info: breadandpuppet.org.

7:30 p.m. - Mamma Mia!, Haskell Opera House. For info: haskellopera.com.

8:00 p.m. - The Hot Sardines, Bethlehem Colonial Theatre. For info: bethlehemcolonial.org.

8:00 p.m. - White Christmas, Weather-vane Theatre. For info: weather-vanetheatre.org.

8:15 p.m. - Outdoor Movie Screening, Prouty Beach. For info: newportrecreation.org.

Saturday, August 10

Burke Bike n' Brew, Burke Mountain. For info: skiburke.com.

8:00 a.m. - Crystal Swim, Crystal Lake State Park. For info: kingdomgames.co.

8:30 a.m. - Jay Summer Fest, Downtown Jay. For info: jayvt.com.

2:00 p.m. - The Drowsy Chaperone, Weather-vane Theatre. For info: weather-vanetheatre.org.

4:00 p.m. - Old Stone House Music Series - Vermont Fiddle Orchestra, The Strong Natural Amphitheater. For info: oldstonehousemuseum.org.

6:00 p.m. - Strangefolk Garden of Eden Festival, Jay Peak State-

Calendar continues on 33

GOODRIDGE LUMBER, INC.



WHITE CEDAR LOG HOMES & LOG SIDING

Rough and Finished

White Cedar Lumber

Decking • T+V Groove

Shiplap • Square Edge

Perma-Chink Products for Log Homes



White cedar from

Vermont's Northeast Kingdom!

From the time cedar logs enter the sawmill yard until they leave as finished products, the Goodridge family are all actively involved in the manufacturing process and look forward to assisting you with your white cedar project.

Quality Lumber & Service
Since 1974

www.goodridgelumber.com

183 Bayley-Hazen Road East

Albany, Vermont

802-755-6298

Superior Cedar Products & Services Since 1974



LITTLETON Farmers Market

Local produce, meat & cheese, cut flowers, handmade crafts, native NH goods, delicious food, coffee, and more!

SUNDAYS 10 AM to 1 PM

June through October • Rain or Shine

CREDIT, DEBIT AND SNAP CARDS ACCEPTED

ON THE AMMONOOSUC RIVER
Littleton, New Hampshire

By the covered foot bridge at Littleton Area Senior Center
77 Riverglen Lane, Littleton, NH

Paul Asbell Jazz Trio • Annie & The Hedonists • Pete's Posse
Ken & Brad Kolodner Trio • Bob Amos & Catamount Crossing
Jim Rooney • Jason Bergman & the Primal Boys
Sky Blue Boys & Cookie • Carl Jones & Erynn Marshall
Blair-Curtin-McCaffrey • Joe Alper
Steve Zakon-Anderson (Dance Caller)

Concerts, Workshops, Dances,
Jam Sessions, Family Tent,
Camping, Craft Fair, Food Court,
Instrument Petting Zoo & More!

9th ANNUAL PAMFEST
PEACHAM ACOUSTIC MUSIC FESTIVAL



AUGUST 16 & 17, 2019

GET TICKETS AT CATAMOUNTARTS.ORG 801-748-2600
Early Bird Ticket Special ends July 31st

The Where And When Of County Fairs

Summer at the Rec Center



Fun in the Sun – Cool in the Pool



Playground – Picnic – Parties
Volleyball
Street Hockey – Pickleball
Horseshoes
Swim Lessons – Swim Team
Water Fitness

33 Rec Center Road – Colebrook, NH
603-237-4019 – www.northrec.org

Bradford Fair

July 18-21

www.bradfordfair.org

Events and schedule not available as of publication time.

75th Annual North Haverhill Fair

July 24-28

www.nohaverhillfair.com

July 24 - exhibit halls open 4 p.m. to 10 p.m. - Michael Vincent Band

July 25 - exhibit halls open 10 a.m. to 10 p.m. - North Haverhill's Got Talent

July 26 - exhibit halls open 10 a.m. to 10 p.m. - Trent Harmon Concert

July 27 - exhibit halls open 10 a.m. to 10 p.m. - Wanted: DOA Concert

July 28 - exhibit halls open 10 a.m. to 6 p.m. - Contagious Band Vermont, Professor Paddy Whack

Plus demolition derbies, log loader contest, tractor pulls, truck pulls, animal pulls, racing pigs and more.

Danville Fair

Aug. 9-10

www.danvillevtchamber.org/danville-fair

There will be a variety of musical entertainment from the Bandstand Friday night through Saturday evening. There will be a horse and pony pull behind the Methodist Church. There will be a wide variety of food provided by local non-profit organizations. Rides, games, raffle and more.

Orleans County Fair

Aug. 14-18

www.orleanscountyfair.net

Rides, youth and adult demo derby, burn out competition, 4X4 truck pulls, antique/farm stock pulls, harness racing, horse and pony pulls, gymkhana, youth, open horse and dairy shows, milking parlor exhibit, farm animals, 4-H exhibits, children's little farm hands exhibit, floral hall exhibits, maple sugar house, beer and wine garden with live music, carving and more.

Caledonia County Fair

Aug. 21-25

www.caledoniacountyfair.com

Aug. 21 - gates open 4 p.m. - Mini-horse pull, power wheels demo

Aug. 22 - gates open 7 a.m. - Children's day, youth dairy cattle showing, pony pull, tractor pull, Back In Black concert

Aug. 23 - gates open 7 a.m. - Senior day, dairy cattle judging, horse pulling, truck pulls, fire show by Phoenix Bazaar

Aug. 24 - gates open 7 a.m. - Family day, cattle costume contest, gymkhana, grand cavalcade, log loader, Kingdom All Stars, New England Rodeo

Aug. 25 - gates open 7 a.m. - Demo day, horse show, ox pulling, pig scramble, demo qualifying and finals

Lancaster Fair

Aug. 29 - Sept. 2

www.lancasterfair.com

Events and schedule not available as of publication time.

L.L. Cote Outlet NEW Store

**UP TO 85%
MARKDOWN**



Hours:
Monday-Saturday 8-4
Sunday 10-4

L.L. Cote COUNTRY DECOR & MORE



**Amish Furniture
Primitives • Unique Gifts**

54 Main Street Errol, NH 03579

603-482-3370

SPORTS CENTER

Fishing • Clothing • Kayaks • Gas
Ice Cream • Boots, Shoes, Flip Flops • Pizza
Hardware • Hunting • Sunglasses • Jewelry
Hardware Store • Gift Shop
Subway • Archery • Camping Gear
Outdoor Cooking Supplies
& Seasonings

1-800-287-7700 • 603-482-7777
www.llcote.com
STORE HOURS: 8AM-5PM Daily
7 Main Street, Errol, NH 03579

**We have
everything you
need to enjoy
the Summer**

**SHOP
FOR THE
WHOLE
FAMILY!**

Groove Your Swing At Area Golf Courses

Area golf courses:

VERMONT

Barton Country Club – Barton, Vt. – 802-525-1126, www.golflink.com/golf-courses/vt/barton/barton-golf-club

Bradford Country Club – Bradford, Vt. – 802-222-5207, www.bradfordgolfclubinc.com

Jay Peak Resort – Jay Peak, Vt. – 802-988-4653, www.jaypeakresort.com/summer/golf

Kirby Country Club – Concord, Vt. – 802-748-9200, www.golflink.com/golf-courses/vt/concord/kirby-country-club

Lake Morey Resort – Fairlee, Vt. – 802-333-4311, www.lakemoreyresort.com/golf

Mountain View Country Club – Greensboro, Vt. – 802-533-7477, www.mvccvt.com

Newport Country Club – Newport, Vt. – 802-334-2391, www.newportscountryclub.com

Orleans Country Club – Orleans, Vt. – 802-754-2333, www.orleanscc.com

St. Johnsbury Country Club – St. Johnsbury, Vt. – 802-748-9894, www.golfstjcc.com

NEW HAMPSHIRE

Bethlehem Country Club – Bethlehem, N.H. – 603-869-5745, www.bethlehemccnhgolf.com

Blackmount Country Club – North Haverhill, N.H. – 603-787-6564, facebook.com/BlackmountCountryClub

Colebrook Country Club – Colebrook, N.H. – 603-237-5566, www.colebrookcountryclub.com

Maplewood Country Club – Bethlehem, N.H. – 603-869-3335, www.maplewoodgolfresort.com

Mount Washington Resort – Bretton Woods, N.H. – 603-278-4653, brettonwoods.com/activities/golf/overview

Mountain View Grand Resort – Whitefield, N.H. – 603-837-0076, www.mountainviewgrand.com/golf.htm

Sunset Hill Golf Course – Sugar Hill, N.H. – 603-823-7244, www.innatsunsethill.com

Waumbek Golf Course – Jefferson, N.H. – 603-586-7777, www.waumbek.com

Information from GolfLink.com and course websites

DUCRET'S SPORTING GOODS
133 Main St., Colebrook, NH 03576 – 603-237-4900
Hunting, Ice Fishing, Sporting Goods, Snowshoes & Skates,
Paints (include Cabot, Sikkens and PPG)

Business For Sale

OPEN 7 DAYS A WEEK
NH F&G Lic. – OHRV Reg.

LP Tank Refills

LEMIEUX Garage, Inc.

NEW & PRE-OWNED OEM PARTS FINDER

FULL LINE OF CLOTHING, ACCESSORIES & PARTS FOR YOUR ATV AND SIDE-BY-SIDE
FULL SERVICE GAS

161 Main Street • Colebrook, NH
603-237-4377
www.lemieuxgarage.com

The 'Quiet' Destination

Jackson's Lodge
"a family tradition"
Lake Wallace • Canaan, Vermont

Lodge Events & Lakeside Cabins
May through October

Jackson's Café for Breakfast
June 15th through September 1st
Sat. 8-11 • Sunday 8-1

JacksonsLodgeVT.net
(802) 266-3360

tripadvisor
2015-2018
WINNER
Certificate of Excellence

LaPerle's IGA plus

HOMETOWN PROUD

Services:
ATM • Western Union • Fax • Lottery
• Money Orders • Utility Payments

For your Shopping Needs

- Produce • Deli
- Meats • Wine & Beer
- Take-Out • Prepared Foods
- Floral • Cakes for All Occasions

Plenty of Parking • 603-237-4370

North Main Street • Colebrook, NH
For Weekly Ad, Promotions & Coupons go to
laperlesiga.com

Exploring Mt. Washington - No Matter How You Get There!

If you want to see a huge portion of our area in a single afternoon, there's no better vantage point than the top of Mt. Washington. On a clear day you can see six states and the Atlantic Ocean (though the mountain is notorious for its record-making weather.)

Hundreds of thousands of people make it to the summit of Mt. Washington each year. They do it in a huge variety of ways: by foot, by bike, by car, by train.

Mike Dickerman is a history buff and hiking guide book author, including co-authoring "The 4000-Footers of the White Mountains" with Steven D. Smith.

"Every way up has something to offer for sure," Dickerman said. "Once you get above tree line, I mean how can you beat the views? And if it's a hot day in the valley, it can be very refreshing to be up above the tree line!"

Refreshing might depend on the day: "We all know Mt. Washington is pretty fickle and it can be a 30 degree difference, what with the wind-chill. It can be pretty chilly up on the summit, even in the middle of July or August," Dickerman said.

You might even find pockets of snow in shad-



Bicyclists approach the summit of Mt. Washington on two wheels.

ed areas, like parts of Tuckerman's Ravine, into July, according to Dickerman.

So how would you like to make your ascent up the mountain?

HIKING

Dickerman is a hiker himself, so his first choice is obvious – as long as you're ready for the challenge.

"It should be a pretty fit person to do it, but that doesn't mean all the people that are going up there are fit!" he said. "It's kind of a rite of

passage for hikers. They've got to get to the high point of New England, which is Mt. Washington, whether you're ready for it or not."

In fact, that was his own story – Dickerman was drawn in by the allure of Mt. Washington when he first started hiking in 1984, and it was only his seventh or eighth hike. "There's something about that elevation and its mystique," he said. "It kind of draws you up there."

Crowds at the summit have grown exponentially, so Dickerman's favorite place to spend

time is about a half mile down the trail from the summit.

"It can be kind of disappointing for a hiker, when you get to the top and you know you're sharing the summit with a thousand other people," he said. "I may run in and use the bathroom, get a quick bite to eat. But if I'm going to linger anywhere, it's going to be down a half mile off the summit in any direction. Just to get away from the crowds and enjoy the view in rel-

Rock Pile continues on 29



Morrill & Guyer Associates

VT PREFERRED LAND & HOMES

www.homeinthekingdom.com

"Now is the time to Buy or Sell your home."
Come visit the experienced Morrill & Guyer staff to assist you in this process ...






Annie Guyer Mike Channon Kristy Liberty Jeff Cota

Tel. (802) 626-9111 • Fax (802) 626-6913
791 Broad St. • Lyndonville, VT 05851
email: info@homeinthekingdom.com



Your Vermont Adventure begins here ...

www.lyndonvermont.com
802.626.9696



39th Annual Stars and Stripes Festival and Parade

Saturday, July 20th
 Huge parade at 10 am Music, Crafts, Food, Clown Show & more to follow in Bandstand Park until 4 pm
Fun for the whole family!

Information Booth
 Memorial Day-Columbus Day
 Friday & Saturday 10am-5pm
 Sunday 10am-2 pm

Welcome to
LYNDONVILLE

SNJ

SEAMLESS Rain Gutters

LEAFPROOF GUTTER COVERS

Custom Made
Many Colors to Choose
Free Estimates • Fully Insured
We Fix Damaged Fascia
Owner Installer
All Work Guaranteed

SERVING VT & NH
WWW.SNJRAINGUTTERS.COM
802-751-6191

Rock Pile

Continued from Page 28



Hikers can approach Mt. Washington from many angles.

ative peace and quiet.”

Dickerman estimates that there are between eight and ten ways to get up the mountain on foot, varying in length, difficulty, and steepness.

On the west side of the mountain, he recommends a loop beginning at the Cog Railway, up the Ammonoosuc Ravine Trail to the Crawford Path, then down the Jewell Trail.

On the east side of the mountain, he recommends going up and down Tuckerman’s Ravine.

Of course, check the conditions before you head out for a hike. “Obviously you don’t want to hike in [bad] weather, but there’s something magical about getting above tree line and the winds are whipping and you can see a foot in front of you,” Dickerman said.

DRIVING

The Mt. Washington Auto Road is popular for those who want to see the views from inside their car.

“It’s a huge tourist draw,” Dickerman said. “Of course, it’s weather dependent. You don’t want to go up there on a lousy day. Pick a nice clear day – the views along the upper part of the road are just incredible.”

The Mt. Washington Auto Road is well-known locally. The bumper stickers proclaim-

ing “This car climbed Mt. Washington” can be seen proudly displayed on cars around the country.

“I always get a kick when I’m out in the Midwest someplace, and I’ll see a car with the ‘This car climbed Mt. Washington’ bumper sticker,” Dickerman said. “I can remember just outside Chicago, seeing the Mt. Washington auto bumper sticker and a Polly’s Pancake Parlor bumper sticker within a half hour of each other!”

COG RAILWAY

According to Rebecca Metcalf, Marketing Director for the Cog Railway, 120,000 riders rode to the top of Mt. Washington during the summer months last year on the Cog.

“Mt. Washington has been a mountain people want to conquer one way or another for a very long time,” Metcalf said. “The fact that it’s visible from such a distance, it makes people curious, even if people don’t know what it is.”

And why do they choose the Cog for their adventure?

“It’s the first operating cog railway in the world! It’s a must-do because it’s so unique,” Metcalf said. “It has a sense of mysteriousness with it. And the fact that it’s a train going up a mountain at a 40 percent grade.”

She said that while some people get nervous about heights and the enclosed space when they’re anticipating their ride up the mountain, they usually forget all about their fears when they get into the train.

“Once you’re on the train, it doesn’t feel like you’re off the ground or at a crazy height,” she said. “And the views take your breath away – your focus switches to the mountain. I’ve ridden with people who are extremely afraid of heights, but they just see those mountains and it’s all worthwhile.”

While most of the trips up the mountain are now done using cleaner and more economical bio-diesel engines, there are still two trips a day that they run with the original steam engine.

“Our steam engines are highly-coveted as far as our trips go. We’ve been operating them here since the early 1900s, so we have a large group of steam enthusiasts that come here specifically to ride those engines,” Metcalf said. “They go about the same speed, the coaches are basically the same. It’s that nostalgic steam power that people like. It’s a whole experience in itself.”

This year is the 150th anniversary of the Cog Railway. There will be a special celebration as the season kicks off on June 21,

with the actual anniversary being marked on July 3.

Why are people passionate about getting to the top of Mt. Washington?

“You never know exactly what the mountain is going to throw at you and that element of surprise appeals to many, myself included.” ~ Mike Dickerman

Other notables events at Mt. Washington this summer:

Information for all events at mtwashingtonautoroad.com

June 10 - June 13 - Ride to the Sky - Motorcycle-only days on

Rock Pile continues on 32

DISCOVER StJohnsbury

There are so many reasons to come to St. Johnsbury. These are just a few...

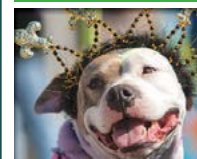
FARMERS MARKET



**Saturdays, 9am-1pm
Downtown St. Johnsbury**

The largest farmers’ market in Caledonia County, this is where you’ll find the freshest produce, live music and lots of fun.

PETS ON PARADE



**June 8
10am
Main St., St. Johnsbury**
A celebration of friends with wings, fur, tails or hooves.

CIRCUS SMIRKUS



July 2 & 3
Vermont’s home-grown circus brings talent and tumbling to St. Johnsbury’s Green Mtn. Mall.

CONCERTS AT COURTHOUSE PARK



**June 17 - August 12
7:30pm - 8:30 pm**
Featuring the St. Johnsbury Band, the nation’s third oldest community band.

Levitt AMP MUSIC SERIES

July 14 – September 16

Free Outdoor Concerts at Dog Mountain, Spaulding Road.

Presented by Catamount Arts.
Rain or shine, dog-friendly.

COLORS OF THE KINGDOM & ST. J BLUEGRASS FESTIVAL (2PM)



September 14
Autumn Festival in St. Johnsbury’s beautiful & historic downtown, begins at 8am. Train rides, arts & crafts fair, parade, farmers market, bluegrass festival, food, shopping and more.



*Vermont Business Magazine’s
2017 Best of Business Award for:*
BEST GOLF COURSE

MANIC MONDAYS:
18-HOLES W/CART \$35
9-HOLES (WALKING) \$10.38

**KIDS 12 & UNDER
PLAY FOR FREE!**

SENIOR (60+) DISCOUNT:
TUE. & WED.
18-HOLES W/CART
\$39

MILITARY & 1ST RESPONDER DISCOUNT:
50% OFF
GREENS FEES W/VALID ID:

MULTI-ROUND SPECIALS
• 10-PLAY PUNCH CARD
• 12-PLAY W/CART COUPON BOOK



**18-HOLES AFTER 2 PM \$23.58
9-HOLES AFTER 2 PM \$16.04
AFTER 6PM: \$11.32 UNLIMITED # OF HOLES**

*Promotions cannot be combined



**316 COUNTRY CLUB LANE • ORLEANS, VT 05860
802-754-2333 • WWW.ORLEANSCC.COM**

VISIT THESE BUSINESSES IN THE NORTHEAST KINGDOM!

WHITE CAPS CAMPGROUND 5659 Route 5A
Westmore, Vermont
802-467-3345

South End of Lake Willoughby

- Country Store Hot Deli
- RV Sites & Rentals • B&B Rooms • Cabin & Leanto
- Kayak, Canoe & Paddle Board Rentals

www.whitecapscampground.com
email: whitecaps@kingcon.com

Before AUTO

130 Before Auto Dr., West Burke, VT 05871
802-467-8360
beforeauto@charter.net

Auto Sales & Autobody Repairs
Fully Insured • Fully Licensed

Brad & Kim Before Prop.

Like Us On 


THURSTON
AUTO SALES LLC

BILL DIMICK • ERNIE THURSTON

1320 Memorial Drive - St. Johnsbury, VT
802-748-6373
www.thurstonautoonline.com

Sanderson's WOODEN BOWLS
Hand Turned EAST BURKE, VT
Wooden Bowls and Pens

Sanderson's Woodturning
Sam & Weeza Sanderson
2902 VT Rte. 114
East Burke, VT 05832
802-626-9622 • www.vtbowls.com
COME VISIT OUR SHOWROOM!



Barnet Tradeport Wellness Center

- Massage Therapy • Chiropractic
- Kinesiology • Reiki • Feldenkrais

CONTACT US FOR AN APPOINTMENT
802-633-2700

"Serving the Northeast Kingdom of VT & NH"

 In Vermont's Northeast Kingdom
Overlooking Lake Willoughby

The LaBerge Family
802-525-3575

Sites Available by the Day, Week or Month
Camp Store • RV Supplies
Propane Tank Refill

227 Will-O-Wood Lane, Brownington, VT 05860-9635

**GROOMING
TRAINING
BOARDING • AGILITY
DOG DAY CARE**

Kingdom Canine Center

738 Lynburke Rd., Lyndonville, VT
802-274-6033
kingdomcaninecenter.com




WILLOUGHBY LAKE STORE

FULL DELI, FRIED FOODS, SANDWICHES,
PIZZA, BURGERS AND MORE
NOW YOUR VERMONT STATE LIQUOR STORE

NON ETHANOL GAS
FISHING EQUIPMENT AND BAIT
ICE CREAM
22 FLAVORS OF HARD ICE CREAM
8 FLAVORS OF SOFT ICE CREAM

WESTMORE, VERMONT - PHONE 802-525-3300

 **DAN WYAND, P.T. & ASSOCIATES**
Putting bodies back in motion

97 Sherman Dr., Ste. 2 195 Industrial Parkway
St. Johnsbury, VT Lyndonville, VT
802-748-3722 802-745-1105
Mon.-Fri. 7:30 am-5 pm Mon.-Fri. 7:30am-5 pm

danwyandpt.com

EASY AUTOS

SALES & SERVICE

ESTABLISHED 2011

LYNDONVILLE VERMONT

www.EZautos.net 802-626-8283

Lyndonville Redemption & Beverage

Memorial Drive,
Lyndonville, Vt.
802-626-8348
Please return your bottles & cans.

Deli • Megabucks • Powerball
Vt. State Liquor Store

If you choose to drink, don't drive.
And all your favorite ...

ICE COLD Beverages

Life is better when
you ... **SMILE!**

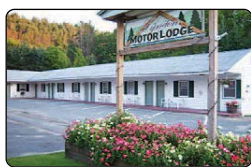
DANVILLE DENTAL GROUP, PLC
ZAHRA KHORRAMI, D.D.S.

31 Mountain View Drive - Danville, VT
802-684-1133
www.danvilledentalgroup.com
frontdesk@danvilledentalgroup.com

Visit These Businesses in the Northeast Kingdom!



- Exceptionally Clean & Cozy
- Free WiFi
- Best Little Motel in The NEK
- Flat TV/ DVD/HBO
- Refrigerator/ Microwave/ Coffee Maker



Just 7 minutes to Kingdom Trails in East Burke
Route 5 ~ 6148 Memorial Drive
Lyndon, VT 05849
802-626-3548
www.lyndonmotorlodge.com



Come and Browse our Selection of
New, Used, Rare & Collectible Books

GREEN MOUNTAIN BOOKS & PRINTS

1055 Broad Street, Lyndonville, VT 05851 • 802-626-5051
Open: Mon.-Fri. 10-6; Sat. 9-5 • www.greenmtnbooks.com

TOWNS CORNER STORE

BURGERS, HOTDOGS, SANDWICHES,
PASTA SALAD, AND MORE

FULL SERVICE GAS

ON AND OFF-ROAD DEISEL
VERMONT BREWED BEER, SODA, SNACKS,
GREEN MOUNTAIN COFFEE

12 BROAD ST, LYNDONVILLE, VT 05851, 802-626-4594



B.C. MASONRY

B.C. Masonry specializing in Fireplaces & Masonry:
Chimneys • Fireplaces • Stone • Brick
Stainless Steel Chimney Liners
(Lifetime Warranty)

Block • Patios • Walkways and Retaining Walls
Residential or Commercial Free Estimates

Bruce Cushman – Fully Insured
3rd Generation Mason

802-274-1220

Fabric • Yarn • Notions • Patterns • Books • Gifts

Sewin Love
FABRIC SHOPPE

101 Depot St., Lyndonville, VT
Open Mon.-Sat. 9-5:30
802-427-3070



LYNDON BUFFET

Authentic Chinese & American Cuisine

Largest Buffet Selection Around

Eat-In or Take-Out All Day!

Liquor License

Full Menu Always Available

Gift Certificates

Order online at:

www.lyndonbuffetchinese.com

Dine In

Take Out

Catering

Wi-Fi

802-626-8886

626 Broad Street, Lyndonville, VT (I-91, Exit 23)
Mon.-Thu. 11-9 • Fri. & Sat. 11-10 • Sun. 11:30-9



THE CARPET CONNECTION

RETAIL & WHOLESALE *"The Flooring Specialists"*
"We Sell Only Flooring; That SAVES You Money."

199 Depot Street • Lyndonville, VT

802-626-9026

www.thecarpetconnectionvt.com



BURKE COTTAGE RENTALS & CAMPGROUND
NIGHTLY – WEEKLY – MONTHLY • 802-467-3416
Open Year Round • Near Lakes, Bike Trail & Skiing

TENT RENTALS



- Tents
- Tables
- Chairs
- Bounce House



802-748-7841 • ST. JOHNSBURY, VT
www.allaroundrental.com

David A. Lussier



REAL ESTATE AGENCY

FARMS • ACREAGE • HOMES • INVESTMENT PROPERTIES

Box 872, 540 Main Street, Lyndonville, VT 05851

802-626-9541 (Office)

David A. Lussier 802-274-0747

Steve Young 802-274-1275

e-mail: lussier@kingcon.com



Miss Lyndonville
DINER

802-626-9890

**Breakfast
Lunch
Dinner**

686 Broad Street
Lyndonville, VT

Mon.-Thu. ~ 5:30am-8pm
Fri. & Sat. ~ 5:30am-9pm
Sun. ~ 7am-8pm

The Cog train approaches the summit of Mt. Washington.
(Photo courtesy of Mt. Washington Cog Railway)

Wes Ward Auto Repair

✓ Family owned and operated - serving area communities for more than 35 years.

✓ Full service domestic and foreign vehicle maintenance and repair.

Paula & Wes



ASE
CERTIFIED



2017
BEST OF THE KINGDOM
READER'S CHOICE



AAA
Approved
Auto Repair

1193 Portland Street
St. Johnsbury, VT
Open Mon. - Fri.: 7:00pm - 5:00pm
802-748-3636



NAPA
AUTOCARE
CENTER

Rock Pile

Continued from Page 29

the Auto Road
June 15 - Mt. Washington Road Race - thousands of runners tackle the mountain

June 22 - The Cog Anniversary Gala
June 29 - The Gerry Pomerleau Memorial Ride - ATV-only day on the Auto Road
July 3 - Family Festival of kids activities
Aug. 4 - Adaptive Sports Partners Sunrise Ascent - teams ascend the Auto Road to support adaptive athletes
Aug. 17 - Mount Washington Auto Road Bicycle Hillclimb - the original bike race up the Auto Road



150th Anniversary!
1869
2019
COG RAILWAY

A NATIONAL HISTORIC ENGINEERING LANDMARK

Climb the Highest Peak in the Northeastern US...by Train!

Check out our 150th Season Events!

- June 22nd Anniversary Gala! An epic party 150 years in the making! Visit us at the cog.com for info and to book
- July 3rd family festival, join us in celebrating kids activities, bbq, balloons, ice cream, and more! Marshfield Station, 11-3 pm
- August 17/18 -Steampunk Festival, visit railwaytothemoon.com

800-922-8825 • THECOG.COM
Base Station Road, Marshfield Station, NH 03589
6 miles from Rt. 302 & historic Bretton Woods, New Hampshire

Summer Sale

C.H. DANA R.V.

Sales & Service

Largest Selection of
PARTS AND ACCESSORIES
For ALL RVs



ON-SITE FINANCING

Tax Free NH!

OPEN: MONDAY-FRIDAY 8-5, SAT 9-3
A Family Tradition Since 1955 • www.chdanarv.com
628 Woodsville Road • Monroe, NH 03771 • 603-638-2200
Just off I-91, Exit 18, Rte. 135 South, 15 miles South of St. Johnsbury, VT
From Littleton: I-93N to Exit 44, 15 miles South on Rte. 135, on right.

Calendar

Continued from Page 25

side Amphitheater. For info: jay-peakresort.com.

7:00 p.m. - The Lion, the Witch and the Wardrobe, Old Church Theater. For info: oldchurchtheater.org.

7:30 p.m. - Mamma Mia!, Haskell Opera House. For info: haskelopera.com.

7:30 p.m. - North Country Chamber Players - Ayano Ninomiya, Sugar Hill Meetinghouse. For info: northcountrychamberplayers.org.

8:00 p.m. - The Drowsy Chaperone, Weathervane Theatre. For info: weathervanetheatre.org.

Sunday, August 11

8:00 a.m. - Island Pond Swim, Lakeside Park. For info: kingdomgames.co.

2:00 p.m. - Mamma Mia!, Haskell Opera House. For info: haskelopera.com.

3:00 p.m. - Diagonal Life Circus & Pageant, Bread and Puppet Theater. For info: breadandpuppet.org.

3:00 p.m. - The Lion, the Witch and the Wardrobe, Old Church Theater. For info: oldchurchtheater.org.

4:00 p.m. - North Country Chamber Players - Ayano Ninomiya, Mountain View Grand Resort. For info: northcountrychamberplayers.org.

Monday, August 12

8:00 a.m. - Lac Massawippi Swim, Ayre's Cliff. For info: kingdomgames.co.

7:30 p.m. - St. Johnsbury Band Concert, St. Johnsbury Courthouse Bandstand. For info: stjohnsburyband.org.

8:00 p.m. - The Curious Incident of the Dog in the Night-Time, Weathervane Theatre. For info: weathervanetheatre.org.

Tuesday, August 13

8:00 a.m. - Lake Seymour Swim, State beach at 6619. For info: kingdomgames.co.

7:30 p.m. - Fish Behavior in late summer, Craftsbury Outdoor Center. For info: townofcraftsbury.com.

7:30 p.m. - Shape Note/Sacred Harp Sings, Bread and Puppet Theater. For info: breadandpuppet.org.

8:00 p.m. - The Curious Incident of the Dog in the Night-Time, Weathervane Theatre. For info: weathervanetheatre.org.

Wednesday, August 14

8:00 a.m. - Echo Lake Swim, Echo Lake. For info: kingdomgames.co.

11:00 a.m. - The Patchwork Players - Families are Like Fudge, Bethlehem Colonial Theatre. For info: bethlehemcolonial.org.

1:00 p.m. - LCC Book Club, Littleton Community Center. For info: littletonareachamber.com.

4:00 p.m. - Books of Jewish Interest Club - Lovesong: Becoming a Jew by Julius Lester, Bethlehem Hebrew Congregation. For info: bethlehemsynagogue.org.

8:00 p.m. - Bright Star, Weathervane Theatre. For info: weathervanetheatre.org.

Thursday, August 15

8:00 a.m. - Lake Memphremagog-Clubhouse Swim, The Clubhouse. For info: kingdomgames.co.

10:00 a.m. - Smokey Bear's 75th Birthday Celebration, Cannon Mountain. For info: cannonmt.com.

8:00 p.m. - Lady Day at Emerson's Bar & Grill, Weathervane Theatre. For info: weathervanetheatre.org.

Friday, August 16

8:00 a.m. - Willoughby USMS Sprint Distance Open Water National Championship, North Beach. For info: kingdomgames.co.

5:00 p.m. - Classicopia Piano Quartet, Bethlehem Hebrew Congregation. For info: bethlehemsynagogue.org.

6:00 p.m. - Name plate necklaces class, Littleton Studio School. For info: littletonstudioschool.org.

7:00 p.m. - Catamount Arts Open Stage - all ages, substance-free, student run, The Cavern. For info: discoverstjohnsbury.com.

Calendar continues on 34



See why millions trust us for Home & Auto.

Brett J. Gale, Agent
1033 Broad Street
Lyndonville, VT 05851
Bus: 802-626-8651
brett@brettgaleinsurance.com

I'm here to help life go right™, by saving you time *and* money when you combine your home and auto insurance.
CALL ME TODAY.



State Farm Mutual Automobile Insurance Company
State Farm Indemnity Company
State Farm Fire and Casualty Company
State Farm General Insurance Company
Bloomington, IL

1601486



"LET'S GO KAYAKING"

- * **Paddle Trips**
- * **Canoe/Kayak/Paddleboard Rentals**
- * **Hourly, Daily and Weekly**
- * **Shuttles / Delivery**
- * **Best Prices**



June, July, August
7 Days a week
8am-8pm

Call for hours
May & September



CLYDE RIVER RECREATION

2314 VT Route 105
WEST CHARLESTON, VT 05872
www.clyderiverrecreation.com
(802) 895-4333

Customer favorite all-inclusive 5.5 mile paddle trip (includes canoe or kayak, paddles, lifejackets and shuttle) \$20 per person

GROUP DISCOUNTS AND LONGER TRIPS AVAILABLE

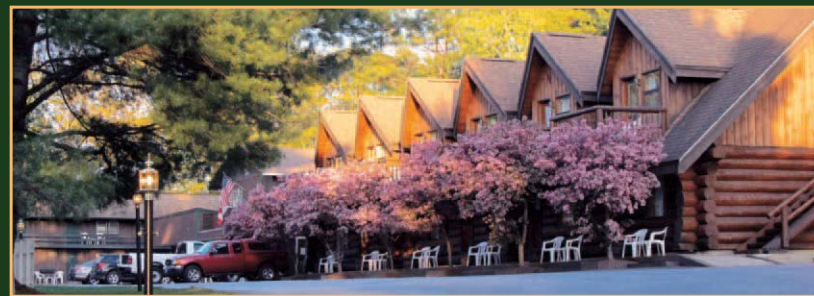
"Gather up the crew, it's worth the drive"



NOOTKA LODGE

Gateway to the White Mountains

Located 1 mile from the western entrance
of the Kancamagus Highway



Close to shopping, restaurants and
White Mountain attractions



Pool • Hot Tub • Jacuzzi Rooms • Log Units w/balcony • Family Suites
Fitness & Game Room • Picnic Area • BBQs • Free Wi-Fi • Coffee Room

603.747.2418 • nootkalodge.com • Woodsville, NH

Hastings Store at Joe's Pond
 West Danville • 684-3398
 Vermont Maple Products & Cheeses
 Deli Platters • Pies • Donuts • Fresh Meats
 Homemade Sausage
 Now Your Favorite Beers & Wines!



MONDAY-SATURDAY 6AM-6PM • SUNDAY 6AM-2PM

FAIRBANKS SCALES



Accurate, reliable, innovative
 weighing and service for
 more than 180 years.

2176 Portland Street, Suite 1 - St. Johnsbury, VT 05819
 802-748-5111

Joe's Pond Craft Shop
Fine Vermont Handcrafts



OPEN:
 May-December:
 Tue.-Sat. 9:30-5:30
 Sunday 9:30-1
 Closed on Mondays
 802.684.2192

Intersection of Rt. 2 & 15
 West Danville, Vermont

www.joespondcrafts.com

Barton Golf Club
 VERMONT

\$29 PER PERSON FOR 18 HOLES WITH CART
 WITH THIS ORIGINAL COUPON.
 GOOD FOR 2019 SEASON.
 FOR YOUR WHOLE GROUP!

**RATED IN GOLF DIGEST MAGAZINE
 AS ONE OF THE COUNTRY'S
 "BEST DEALS IN GOLF"**

18 HOLES - PAR 72 - 6000 YARDS
 IN THE HEART OF THE NORTHEAST KINGDOM

548 Telfer Hill Road - Barton, VT
 802-525-1126 - www.bartongolfclub.com

Calendar

Continued from Page 33

7:30 p.m. - Bread & Puppet show, Bread and Puppet Theater. For info: breadandpuppet.org.

7:30 p.m. - Mamma Mia!, Haskell Opera House. For info: haskellopera.com.

8:00 p.m. - The Drowsy Chaperone, Weathervane Theatre. For info: weathervanetheatre.org.

Saturday, August 17

Steampunk Festival, Mt. Washington Cog Railway. For info: railwaytothemoon.com

8:00 a.m. - Willoughby USMS Sprint Distance Open Water National Championship, North Beach. For info: kingdomgames.co.

2:00 p.m. - Bright Star, Weathervane Theatre. For info: weathervanetheatre.org.

7:30 p.m. - North Country Chamber Players - Metamorphosis, Sugar Hill Meetinghouse. For info: northcountrychamberplayers.org.

7:30 p.m. - Mamma Mia!, Haskell Opera House. For info: haskellopera.com.

8:00 p.m. - Bright Star, Weathervane Theatre. For info: weathervanetheatre.org.

Sunday, August 18

Steampunk Festival, Mt. Washington Cog Railway. For info: railwaytothemoon.com

8:00 a.m. - Caspian Swim, Caspian Lake. For info: kingdomgames.co.

9:00 a.m. - Tender Charity 5K, Littleton Industrial Park. For info: facebook.com/Tender5K.

2:00 p.m. - Mamma Mia!, Haskell Opera House. For info: haskellopera.com.

3:00 p.m. - Diagonal Life Circus & Pageant, Bread and Puppet Theater. For info: breadandpuppet.org.

4:00 p.m. - North Country Chamber Players - Metamorphosis, Mountain View Grand Resort. For info:

northcountrychamberplayers.org.

6:00 p.m. - Community potluck, Franconia Dow Field. For info: franconianotch.org.

Monday, August 19

7:30 p.m. - St. Johnsbury Band Concert, St. Johnsbury Courthouse Bandstand. For info: stjohnsburyband.org.

8:00 p.m. - Bright Star, Weathervane Theatre. For info: weathervanetheatre.org.

Tuesday, August 20

7:30 p.m. - Shape Note/Sacred Harp Sings, Bread and Puppet Theater. For info: breadandpuppet.org.

8:00 p.m. - Spring Awakening in Concert, Weathervane Theatre. For info: weathervanetheatre.org.

Wednesday, August 21

6:00 p.m. - Fantastic Fungi Foray, Bretzfelder Park. For info: therocks.org.

8:00 p.m. - Sister Act, Weathervane Theatre. For info: weathervanetheatre.org.

Thursday, August 22

2:00 p.m. - Sister Act, Weathervane Theatre. For info: weathervanetheatre.org.

6:00 p.m. - White Mountain Jewish Film Festival - Trumbo, Bethlehem Hebrew Congregation. For info: bethlehemsynagogue.org.

8:00 p.m. - Sister Act, Weathervane Theatre. For info: weathervanetheatre.org.

Friday, August 23

5:30 p.m. - Bruno Groening Community Hour, Catamount Arts. For info: 802-748-9545.

7:00 p.m. - Catamount Arts Open Stage - all ages, substance-free, student run, The Cavern. For info: discoverstjohnsbury.com.

7:30 p.m. - Bread & Puppet show, Bread and Puppet Theater. For info: breadandpuppet.org.

8:00 p.m. - Outdoor Movie Screening, Prouty Beach. For info: newportrecreation.org.

8:00 p.m. - The Curious Incident of the Dog in the Night-Time, Weathervane Theatre. For info: weather-

vanetheatre.org.

Saturday, August 24

10:00 a.m. - North Country Moose Festival, Canaan. For info: visitislandpond.com.

10:00 a.m. - Printing your own fabric class, Littleton Studio School. For info: littletonstudioschool.org.

2:00 p.m. - Sister Act, Weathervane Theatre. For info: weathervanetheatre.org.

8:00 p.m. - Sister Act, Weathervane Theatre. For info: weathervanetheatre.org.

Sunday, August 25

9:00 a.m. - The Clif Enduro Lite - Enduro-racing, Burke Mountain. For info: easternstatescup.com.

1:00 p.m. - UnCommon Jam Music Festival, Newbury Common. For info: courtstreetarts.org.

3:00 p.m. - Diagonal Life Circus & Pageant, Bread and Puppet Theater. For info: breadandpuppet.org.

Monday, August 26

7:30 p.m. - St. Johnsbury Band Concert, St. Johnsbury Courthouse Bandstand. For info: stjohnsburyband.org.

8:00 p.m. - The Drowsy Chaperone, Weathervane Theatre. For info: weathervanetheatre.org.

Tuesday, August 27

7:30 p.m. - Shape Note/Sacred Harp Sings, Bread and Puppet Theater. For info: breadandpuppet.org.

8:00 p.m. - Sister Act, Weathervane Theatre. For info: weathervanetheatre.org.

Wednesday, August 28

4:00 p.m. - Books of Jewish Interest Club - The Tattooist of Auschwitz by Heather Morris, Bethlehem Hebrew Congregation. For info: bethlehemsynagogue.org.

8:00 p.m. - Bright Star, Weathervane Theatre. For info: weathervanetheatre.org.

Thursday, August 29

2:00 p.m. - The Curious Incident of the Dog in the Night-Time, Weathervane Theatre. For info: weathervanetheatre.org.

6:00 p.m. - White Mountain Jew-

ish Film Festival - Women's Balcony, Bethlehem Hebrew Congregation. For info: bethlehemsynagogue.org.

8:00 p.m. - The Curious Incident of the Dog in the Night-Time, Weathervane Theatre. For info: weathervanetheatre.org.

Friday, August 30

4:00 p.m. - Stars Party Fund-raiser - Lil Deb & Big Wind, Tritium Well, Raised on Radio, The Strong Natural Amphitheater. For info: oldstonehousemuseum.org.

4:00 p.m. - Jay Peak Trail Running Festival, Jay Peak. For info: jaypeaktrailrun.com.

5:00 p.m. - Cello and Piano concert - Amit Peled and Noreen Cassidy-Polera, Bethlehem Hebrew Congregation. For info: bethlehemsynagogue.org.

7:00 p.m. - Catamount Arts Open Stage, all ages, substance-free, student run, The Cavern. For info: discoverstjohnsbury.com.

8:00 p.m. - Sister Act, Weathervane Theatre. For info: weathervanetheatre.org.

Saturday, August 31

8:30 a.m. - Jay Peak Trail Running Festival, Jay Peak. For info: jaypeaktrailrun.com.

9:00 a.m. - Trapper Education Class - Required for trapping furbearers in Vermont, North Woods Stewardship Center. For info: 802-754-2456.

2:00 p.m. - Best of 2019, Weathervane Theatre. For info: weathervanetheatre.org.

8:00 p.m. - Bela Fleck & Abigail Washburn, Bethlehem Colonial Theatre. For info: bethlehemcolonial.org.

8:00 p.m. - Best of 2019, Weathervane Theatre. For info: weathervanetheatre.org.

Sunday, Sept. 1

6:30 a.m. - Jay Peak Trail Running Festival, Jay Peak. For info: jaypeaktrailrun.com.

2:15 p.m. - Dual Slalom - all-abilities bike race, Burke Mountain. For info: skiburke.com.

THE FARMER'S DAUGHTER

Seasonal - 802-274-1219

- Maple Products • Ice Cream • Gifts
- Homemade Fudge



RTE. 2 • ST. JOHNSBURY, VERMONT

Rinnai



High-performance Tankless Water Heaters,
 EnergySaver® Direct Vent Wall Furnaces at:

APPALACHIAN SUPPLY

"Home of the Bad Guys"

4581 Memorial Drive, St. Johnsbury VT • 802-748-4513

LRH PROGRAMS & SERVICES



LRH offers a wide range of inpatient and outpatient medical, surgical and diagnostic services, including:

24-HOUR BOARD CERTIFIED STAFFED EMERGENCY DEPARTMENT

Emergency Medical Services (EMS) Education

ALLERGY MEDICINE

ANESTHESIA SERVICES

AUDIOLOGY

Hearing Evaluations
Hearing Aid Fittings & Repairs
Vestibular (balance) Function Testing

CARE-A-VAN TRANSPORTATION

CASE MANAGEMENT

Advance Directives
Discharge Planning & Continuing Care
Social Worker on Staff

CARDIOLOGY

CORONARY CARE

Cardiac Rehabilitation and Wellness
Cardiac Lab
Cardiac Stress Testing
24-hour Cardiac Monitoring
Echocardiography
ECG Monitoring

DERMATOLOGY

DIABETES EDUCATION

DIAGNOSTIC IMAGING

Wide Bore MRI
64-Slice CT Scan
Bone Density Scanner
Breast MRI
4-D Mammogram
3-D Ultrasound Imaging
Multi-Slice Spiral CT Scanner
Mammography
iCAD Second Look Mammogram
PET Scan

THE DOORWAY

Drug Prevention Program - **NEW**

**EMERGENCY MEDICINE
ENDOSCOPY PROCEDURES**

EYE CARE

Optometry & Ophthalmology

FACIAL PLASTICS

Botox and Facial Fillers
Blepharoplasty (Eyelid Lift)
Rhinoplasty (Nose Surgery)
Laser Procedures
Surgical Dermatology

FAMILY MEDICINE

FAMILY SUPPORT SERVICES

Alternative Therapies Program
Collaboration with Local Clergy
Collaboration with Mental Health Providers
Referral to Local Support Groups

FOOD AND NUTRITION

Cafeteria Services
Community Appreciation Dinners
Community Nutrition Outreach Programs
Culinary Training
Diabetes Clinic
Nutrition Education Service
Patient Room Service

GALE MEDICAL LIBRARY

Patient and Family Resource Center

GASTROENTEROLOGY

HEALTH INFO MANAGEMENT (Medical Records)

HOSPICE CARE

HOSPITAL MEDICINE

INFECTION CONTROL

INTENSIVE CARE

INTERNAL MEDICINE

LABORATORY SERVICES

LITHOTRIPSY

NEUROLOGY

OBSTETRICS & GYNECOLOGY

OCCUPATIONAL HEALTH SERVICES

DOT – OSHA Exams
Drug and Alcohol Testing
Employee Wellness Clinics
Injury Treatment Services
Pre-Employment Examination

ONCOLOGY/HEMATOLOGY & INFUSION CENTER

OPHTHALMOLOGY

Optometry

ORAL & MAXILLOFACIAL SURGERY

ORTHOPAEDICS

Adult & Pediatric Sports Medicine
Spine Surgery - NEW
Total Joint Replacement - hip, knee, shoulder, hand and upper extremities
Trauma Surgery

OTOLARYNGOLOGY (Ear, Nose & Throat)

PAIN MANAGEMENT

PALLIATIVE CARE

PATHOLOGY

PEDIATRICS

PHARMACY

North Country Pharmacy

PODIATRY

PRIMARY CARE

PSYCHIATRY

PULMONOLOGY

QUALITY SERVICES

RADIOLOGY

REHABILITATION SERVICES

Ergonomics
Industrial Therapy
Incontinence Program
Occupational Therapy
Physical Therapy
Speech Therapy

RESPIRATORY THERAPY

RHEUMATOLOGY

THE SAUTER BIRTHING SUITE

Car Seat Safety Program
Childbirth Education
Lactation Consultation
Newborn Hearing Testing
Mother's Support Group

SHARPS DISPOSAL PROGRAM

SLEEP MEDICINE

SURGICAL SERVICES

Breast Surgery
ENT (Ear, Nose and Throat)
General Surgery
Gynecological Surgery
Orthopaedic Surgery
Spine Surgery - NEW
Trauma & Critical Care Surgery
Urology Surgery

UROLOGY SERVICES

Adult and Pediatric

URGENT CARE - NEW

VOLUNTEER SERVICES

Complimentary Therapies Program
Aromatherapy
Art Therapy
Guided Meditation
Massage Therapy
Music Therapy
Pet Therapy
Reiki and Reflexology,
Roaming/Visiting Volunteer Program

WOUND AND OSTOMY CARE



DISCOVER

HOW A CHANGE IN SCENERY

CAN **CHANGE YOU.**

Let your sense of adventure run free as you explore the great outdoors and the grand indoors.
Enjoy two golf courses, a world-class spa, exhilarating canopy tour, multiple dining options and more.

**20% OFF ANY
SUMMER ACTIVITY!***

VALID DURING 2019 SUMMER SEASON

PROMO CODE: ADS2019



Bretton Woods

OMNI RESORTS
mount washington
new hampshire

800-258-0330

BRETTONWOODS.COM

*May not be combined with other offers or promotions including Summer Day Pass or Resort Guest Pricing. One discount per party, per activity up to 4 people.
Other restrictions may apply. Must mention ad or promo code at time of reserved activities, or at time of purchase for walk-ins. Expires 10/31/19.

