



Explore

Grant County

2022 Grant County, Oregon Visitors' Guide

Published by the Blue Mountain Eagle • John Day, Oregon

MyEagleNews.com



Chester's MARKETS



- ✓ Ready-To-Eat Meals
- ✓ Variety Department
- ✓ Fresh Local Produce
- ✓ Fresh Baked Goods



Positively Impacting The Communities We Serve

John Day, Oregon
541-575-1899
MyChesters.com

S281063-1

BEHIND EVERY PROJECT IS A
True Value®

- **OIL HEATING**
- **HARDWARE**



JOHN DAY HARDWARE

***Find Us On Main Street
In John Day***

541-575-0632
161 E Main St.
John Day

CCB#205644

S274754-1



DREAM. EXPLORE. DISCOVER.

You have arrived.
Slow down and live deliberately.

Canyon City • Dayville • Granite • John Day • Long Creek
Prairie City • Monument • Mt Vernon • Seneca

GRANT COUNTY CHAMBER OF COMMERCE

301 W MAIN, JOHN DAY, OR • 541-575-0547 • WWW.GCOREGONLIVE.COM

S276960-1



SILVIES
SIMPLY AMAZING • SINCE 1883

BOOK YOUR ADVENTURE TODAY

Lakeside Log Cabins

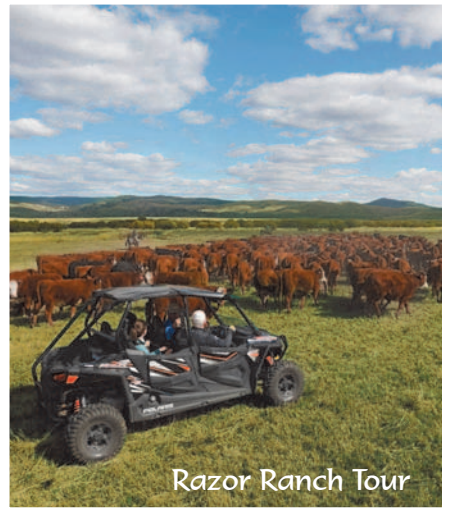
Shopping • Biking • Wildlife • Coats • Western • Golf • Fishing • Horses



Shopping at Goldie's Gallery

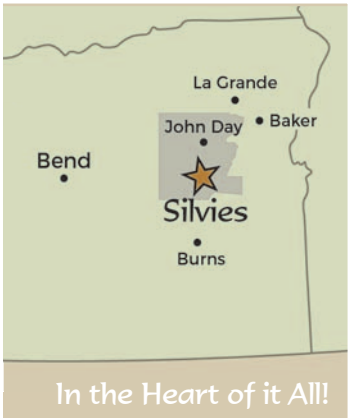


Award Winning Golf



Razor Ranch Tour

Cattle • Hiking • Fun • Spa • Relaxation • Dining • Stars • Shooting • RV/Coach Park



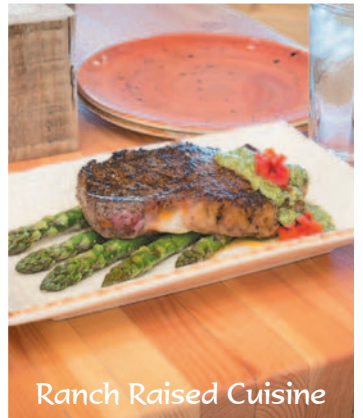
In the Heart of it All!



Bourbon Tasting



Rocking Heart Spa



Ranch Raised Cuisine

Day guests welcome!

No sales tax, no resort fee, no tipping, Free wifi & parking

SILVIES, OR | 800-SILVIES | WWW.SILVIES.US



5276937-1

Explore

Grant County

MyEagleNews.com  

Spin Your Wheels

- 22 Bicycling
- 23 Mountain Biking
- 24 Motorcycle Riding
- 26 Off-Road
- 30 Journey Through Time

Things to Do

- 10 10 Place to Play
- 13 Camping
- 18 Take a Hike
- 20 Get on the Water
- 34 Calendar of Events
- 37 Go to the Snow
- 38 Drop a Line
- 40 Walk on the Wildside
- 42 Hit the Links
- 44 Museums
- 48 Flip a Disc

Communities

- 53 Facts & Contacts
- 54 John Day
- 54 Dayville
- 55 Monument
- 55 Mt. Vernon
- 58 Prairie City
- 61 Long Creek
- 61 Canyon City
- 61 Seneca
- 63 Dale
- 63 Granite
- 63 Kimberly
- 65 Ghost Towns



Editor

Bennett Hall

Editorial Staff

Justin Davis
Steven Mitchell

Advertising Consultant

Kim Kell

Office Assistant

Alixandra Hand

Staff Designers

Randy Wriehouse
Cheryl Christian

Explore Designer

John D. Bruijn

Website

MyEagleNews.com

Office Address

195 N. Canyon Blvd.,
John Day, OR 97845

Phone

541-575-0710

VISIT US ONLINE

MyEagleNews.com

FOLLOW US

facebook.com/MyEagleNews
twitter.com/MyEagleNews

EMAIL US

office@bmeagle.com

WRITE TO US

195 N. Canyon Blvd.,
John Day, OR 97845

ON THE COVER:

Strawberry Lake

PHOTO BY JENNIE MUND

Uncredited photos from
Blue Mountain Eagle archives

Explore Grant County is published
annually by the Blue Mountain Eagle.

Copyright © 2022
Explore Grant County

All rights reserved.

EO Media Group

Welcome to Grant County

When you hear the words “Grant County, Oregon,” what do you think of? Is it the majestic Strawberry Mountains, with their abundant lakes, beautiful wildlife and many hiking trails? The wild and scenic John Day River? Or is it the Kam Wah Chung State Heritage Site and John Day Fossil Beds National Monument? All can only be found in Grant County.

PHOTO BY TORIN FOSTER

Grant County has it all!

Grant County is a unique place with things you won't find anywhere else. There is the Cedar Grove Botanical Area, with the only known Alaska yellow cedar east of the Cascades, nestled in the Aldrich Mountain range. And the Humongous Fungus, the largest living organism in the world, found on the Malheur National Forest in the mountains east of Prairie City.

If you love the outdoors, you're in luck! If you love good food, we have that too! Our community restaurants are top-notch! Grant County has a lot to offer no matter what time of year it is. We have it all! Hiking, birding, fishing, hunting, boating and extraordinary scenery no matter which direction you go. Motorcyclists and bicyclists love it here. Our communities may be small, but they are friendly and have a charm that is hard to find anywhere else.

We have great motels, bed and breakfasts, vacation rentals and campgrounds. Check out our website and book a stay. You'll be glad you did!

Tammy Bremner
Grant County Chamber
of Commerce manager



Explore

MyEagleNews.com



Advertisers Directory

AIRPORT

- 41 Grant County Airport

ACTIVITIES

- 21 Anthony Lakes Resort
- 47 Eagle Cap Excursion Train
- 47 Grant County Snowballers
- 46 JD Rents
- 57 Prairie City Fiber Fest

AUTO

- 60 1st Choice Auto Body & Repair.
- 60 Frontier Equipment & Repair
- 25 John Day Auto Parts/NAPA
- 60 Les Schwab Tires
- 46 OK Garage

BUILDING SUPPLY

- 51 Mills Building Supply & Sporting Goods
- 51 Grant County Building Supplies

CLOTHING

- 57 Bar WB

CHURCHES

- 31 Church of the Nazarene
- 31 First Christian Church
- 31 St. Thomas Episcopal Church
- 31 United Methodist Church
- 31 Victory Baptist Church

COFFEE

- 46 Log Cabin Espresso
- 28 Timbers Bistro

CONTRACTORS

- 51 Grant County Heating & Cooling
- 51 Mobile Glass
- 51 Patriot Plumbing
- 51 Tom Christensen Construction

ELECTRONICS

- 27 DP Home Entertainment

ELECTRICITY

- 12 OTEC

FAIRGROUNDS

- 41 Grant County Fairgrounds

FARM/ANIMAL SUPPLIES

- 33 Gibco Ag. & Industrial
- 46 Robbins Farm Equipment

FUEL

- 46 Boyer's Cash Store
- 47 Burnt River Market
- 52 Dale Store
- 17 Ed's Fast Break/Sinclair & Canyon City Shell
- 46 John Day River Trading Post
- 46 OK Garage
- 28 Triangle Mini Mart

GIFTS

- 46 Dark Horse
- 47 etc.
- 33 Len's Pharmacy

GOLF COURSES

- 25 Anthony Lakes Quail Golf
- 21 John Day Golf Course
- 4 The Retreat, Links and Spa at Silvies Valley Ranch

GROCERS

- 46 Boyer's Cash Store
- 2 Chester's Thriftway
- 9 Huffman's Select Market
- 46 John Day River Trading Post

HARDWARE

- 2 John Day True Value
- 21 Nydam's Ace Hardware

INFORMATION CENTERS

- 3 Grant County Chamber of Commerce
- 67 Grant County Economic Development
- 32 Harney County Chamber of Commerce

LAW

- 41 Strawberry Mountain Law, PC

LODGING

- 57 Budget 8 Motel
- 56 Dixie Creek Bungalows
- 64 Hotel Prairie
- 57 John Day Motel
- 56 Lake Creek Youth Camp
- 56 Lands Inn & Camping
- 57 Long Creek Lodge
- 56 Victorian Lane B&B

MEDICAL

- 9 Blue Mountain Care Center
- 33 Blue Mountain Chiropractic Health Clinic
- 68 Blue Mountain Hospital District
- 41 Canyon Creek Clinic
- 29 Community Counseling Solutions
- 29 Grant County Health Department

- 59 Grant County Veteran Services
- 33 Haven House
- 52 Heart of Grant County
- 33 Len's Pharmacy

MISCELLANEOUS

- 20 Grant County Weed Control
- 66 Rocky Mountain Dispensary

MUSEUMS

- 52 Kam Wah Chung State Heritage Site

NEWSPAPERS

- 62 Blue Mountain Eagle

NURSERIES

- 27 Better Blooms & Gardens
- 52 Thomas Orchards

PRODUCE

- 47 John Day Farmers Market
- 57 Thomas Orchards

REAL ESTATE

- 33 Country Preferred Realtors
- 16 Duke Warner Realty
- 19 Eastern Oregon Realty, Inc.
- 50 Madden Realty

RECREATIONAL VEHICLES

- 36 John Day Polaris

RESORTS

- 4 The Retreat, Links and Spa at Silvies Valley Ranch

RV PARKS

- 33 Bates State Park
- 33 Clyde Holliday State Park
- 41 Depot RV Park
- 41 Grant County Fairgrounds
- 27 OHV Park Morrow County/Grant County
- 56 Southfork RV Park
- 56 Timbers RV Park

RESTAURANTS

- 27 1188 Brewing Company
- 57 Chuck's Little Diner
- 47 Dayville Cafe
- 25 Grubsteak Mining Company Bar & Grill
- 27 Guyon Springs
- 12 The Ugly Truth Bar & Grill

TELEPHONE

- 25 Oregon Telephone Corporation



*Providing long-term care, respite
and day care in a home-like
environment.*

Blue Mountain Care Center offers a variety of options for senior living and care in Grant County. A homey atmosphere and service from our professional, licensed team provides an ideal home-away-from-home. Our intermediate-care facility is Medicaid-certified and affiliated with Blue Mountain Hospital District.

www.bluemountainhospital.org

112 E 5th St. Prairie City, OR 97869

541-820-3341

Snack Foods • Fresh Donuts • FREE Popcorn

A photograph of the produce section of a grocery store. Various fruits like apples, oranges, and grapes are displayed in bins. Price tags are visible, such as \$2.98 for California cherries and \$1.29 for honey tangerines. A wooden basket of onions is in the foreground.

We're
Your Kind
Of Store!

Come Visit Our Friendly People At...

HUFFMAN'S
SELECT
MARKETS
 Prairie City • 541-820-3588

Fresh Produce • Complete Meat Department • Cold Beverages

S274746-1



THINGS TO DO

10 Places to Play in Grant County

1. Seventh Street Sports Complex:

A few blocks off Main Street in John Day, the 23-acre multi-use complex has something for everyone, including a mile-long paved trail wrapping around a tree-lined grassy field, baseball and softball fields, tennis and basketball courts, a stocked fishing pond, two playgrounds, nine-hole disc golf course, skatepark and a splash pad for kids, along with sheltered picnic areas with restrooms and a shower facility.

2. Lake Creek Youth Camp:

Two miles from the southern trailhead into the Strawberry Mountain Wilderness in Logan Valley, the camp started as a fire guard camp in the 1930s; today it serves as a venue for youth groups and outdoor training activities, family reunions, weddings, workshops and much more.

3. Magone Lake:

One of Grant County's favorite places to cool off on scorching summer days. Magone Lake (pronounced "muh-GOON") offers a day-use area as well as a campground set among white fir and ponderosa pine, with a picnic shelter and group campsite that can accommodate up to 75 each. The lake is perfect for fishing, swimming or paddling, and a 1.5-mile trail hugs the shoreline.

4. Wagon Overlook:

Located east of Prairie City on Highway 26, the overlook commemorates the journey taken by the pioneers on the Oregon Trail and provides a breathtaking view of the Strawberry Mountains.

5. Aldrich Ponds:

East of Dayville in the Phillip W. Schneider Wildlife Management Area, these scenic ponds offer a rugged hiking and fishing experience.

6. Sunken Mountain:

Visitors will find a unique geological feature created by a landslide thousands of years ago at this hidden Grant County gem between Long Creek and Monument.

7. Mascall Overlook:

Spectacular views of the John Day Valley and Picture Gorge highlight this interpretive overlook, just off Highway 26 west of Dayville.

8. Sumpter Valley Interpretive Trail:

Located off Highway 26 northeast of Prairie City, this is a good spot for travelers to pull over, stretch their legs and read about how the Sumpter Valley Railway was once the primary mode of transportation in the region.

9. Logan Valley:

A few miles east of Seneca on Forest Road 16, this scenic area offers lots of opportunities for photography, birdwatching, wildlife viewing and camping.

10. Arch Rock:

Located north of John Day in the Malheur National Forest, just off Forest Road 36. A short uphill hike takes visitors to view fascinating geological phenomena created by volcanic ash.



PHOTO BY TANNI WENGER

1.

PHOTO BY MYSSIE VANLOO

4.

PHOTO BY MYSSIE VANLOO

5.

6.



3.

PHOTO BY MEGAN BERNARD



9.

PHOTO BY REAGAN FUZI



10



9.

PHOTO BY PEGGY MURPHY



explore Eastern Oregon

Grant, Harney, Baker and Union Counties are simultaneously breathtaking and accessible!

- SCENIC BYWAYS
- CAMPING
- HIKING
- FISHING
- HOT SPRINGS
- PICNICKING
- BIKING
- KAYAKING
- SNOWMOBILING
- GOLF
- SWIMMING
- RELAXATION



Member-owned

**Oregon Trail
Electric Cooperative**

Your Touchstone Energy® Cooperative 

is proud to serve these counties!

S280953-1

THINGS TO DO

Camping in Grant County

PHOTO BY MEGAN BERNARD

Give your worn, dirt-covered boots a break, take a breath of fresh, mountain air and connect with the natural environment in one of the many campgrounds around Grant County. With thousands of acres of public land, Grant County has plenty of places to choose from, with amenities ranging from hookups for RVs to dry camping. No matter which direction you set out in, you will find a campground suitable for you.

On the Malheur National Forest about 20 miles from John Day, Fall Mountain Lookout allows visitors to spend the night in a former fire lookout atop an 18-foot tower. A catwalk encircles the structure, providing 360-degree views of the surrounding areas, including the Strawberry Mountain Wilderness, Seneca and Mt. Vernon. The lookout can only accommodate two people and provides few amenities.

The Sunshine, Short Creek, Deer Creek and Murderers Creek guard stations — former outposts for firefighters — can also be rented.

Although most of the national forest campgrounds are first-come, first-served, the tower and guard stations can be reserved online. For reservations or more information, visit recreation.gov.

Clyde Holliday State Park

Sitting next to the John Day River only an hour away from some of Oregon's most pristine wilderness areas, Clyde Holliday State Park offers camping beneath towering cottonwood trees. Visitors to the 43-acre park may spot elk and mule deer grazing nearby or steelhead rushing upriver to spawn.

Campground facilities include 31 first-come, first-served electrical sites with water and two reservable teepees for rent from mid-April through late September, a hiker/biker camp, hot showers and flush toilets, firewood and ice for sale, an RV dump station, horseshoe pits and an outdoor amphitheater with summer interpretive programs.

Clyde Holliday State Park is located on Highway 26 a mile east of Mt. Vernon and 8 miles west of John Day.



Bates State Park

Once the site of a thriving lumber mill and company town that operated from 1917 to 1975, the 131-acre Bates State Park lies along the Middle Fork John Day River and Bridge and Clear creeks. The park features 4 miles of hiking trails and an old mill pond where visitors often spot beavers and otters.

Campground facilities include 28 primitive sites for rent for tent camping or self-contained RVs, vault toilets, potable water, and a hiker/biker camp with six sites and electric plug-ins. Three campsites are accessible to campers with disabilities. Camping is first-come, first-served from May 1 to Oct. 1. A day-use area contains facilities for picnicking.

Bates State Park is located about 17 miles east of Prairie City on County Road 20 about a mile from the junction of Highway 26 and Highway 7.

For more information, visit oregonstateparks.org.

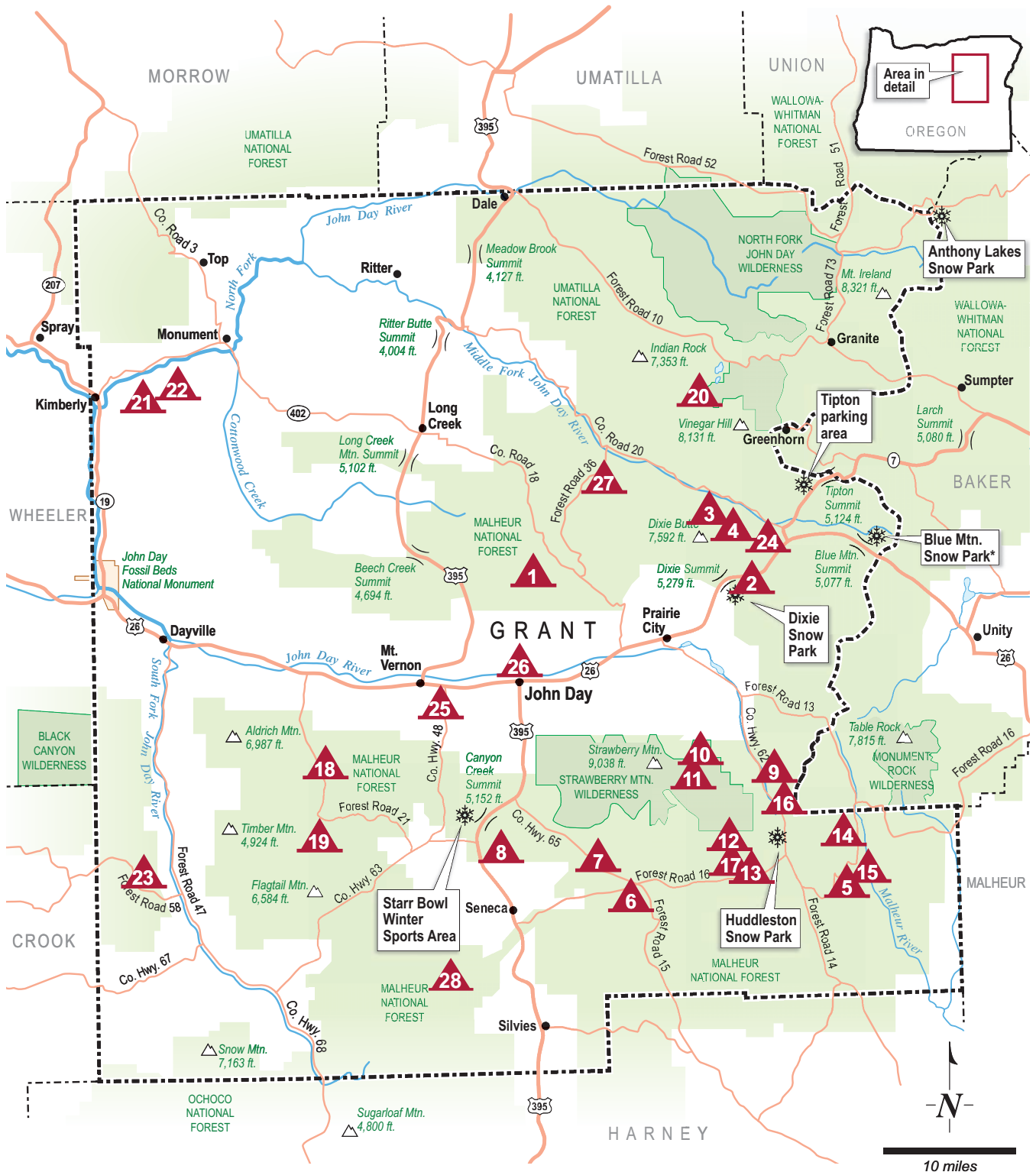


Explore

											
	Camping	Picnicking	Fishing	Boating	Swimming	Bicycling	Accessible	Snow sports	Hiking	Hunting	Corral
	Campground/park	Tent sites	Tent/trailer	Water	Fee	Activities					
1.	Magone Lake — USFS 26 miles N. of John Day on Forest Road 3620	3	20	Piped	\$13						
2.	Dixie — USFS 8 miles N.E. of Prairie City on U.S. Hwy. 26	—	11	—	\$8						
3.	Middle Fork — USFS 9 miles N.W. of Austin Junction on Co. Road 20	—	10	Stream	\$8						
4.	Deerhorn — USFS 4 miles N.W. of Austin Junction on Co. Road 20	—	5	Stream	\$8						
5.	Little Crane — USFS 30 miles S.E. of Prairie City on Forest Road 16	—	4	Stream	—						
6.	Parish Cabin — USFS 11 miles E. of Seneca on Forest Road 1520	—	18	Piped	\$8						
7.	Wickiup — USFS 18 miles S.E. of John Day on Forest Road 15	—	7	Stream	\$6						
8.	Starr — USFS 16 miles S. of John Day on Hwy. 395	—	11	—	\$6						
9.	Trout Farm — USFS 15 miles S.E. of Prairie City on Co. Road 62	—	6	Piped	\$8						
10a.	Slide Creek (east side of road) — USFS 9 miles S. of Prairie City on Forest Road 6001	—	3	Stream	—						
10b.	Slide Horse Camp (west side of road) — USFS 9 miles S. of Prairie City on Forest Road 6001	—	3	Stream	\$8						
11.	Strawberry — USFS 11 miles S. of Prairie City on Forest Road 6001	10	—	Piped	\$8						
12.	Murray — USFS 21 miles E. of Seneca on Forest Road 924	—	6	Stream	\$8						
13.	Big Creek — USFS 21 miles E. of Seneca on Forest Road 815	—	15	Piped	\$8						
14.	Elk Creek — USFS 25 miles S.E. of Prairie City on Forest Road 16	—	5	Stream	—						
15.	North Fork Malheur — USFS 29 miles S.E. of Prairie City on Forest Road 1675	—	6	Stream	—						
16.	Crescent — USFS 17 miles S.E. of Prairie City on Co. Road 62	—	4	Stream	—						
17.	Lake Creek Youth Camp — Nonprofit 20 miles E. of Seneca on Forest Road 924	Call for availability and prices 541-575-2153		Piped	—						
18.	Billy Fields — USFS 20 miles S.W. of John Day on Forest Road 21	—	4	Stream	—						
19.	Oregon Mine — USFS 26 miles S.W. of John Day on Forest Road 2170	5	—	Stream	—						
20.	Olive Lake — USFS 26 miles S.E. of Dale on Forest Road 10	5	23	—	\$12						
21.	Lone Pine — BLM 1.5 miles N.E. of Kimberly on Co. Road 402	—	5	—	\$8						
22.	Big Bend — BLM 3 miles N.E. of Kimberly on Co. Road 402	—	4	—	\$5						
23.	Frazier — USFS 20 miles S.W. of Dayville on Forest Road 5800-500	—	10	Stream	—						
24.	Bates State Park 30 miles N.E. of John Day on Middle Fork Lane	—	28	Piped	\$5-11						
25.	Clyde Holliday State Park 8 miles W. of John Day on U.S. Hwy. 26	—	31	Piped	\$5-24						
26.	Grant County RV Park At the fairgrounds in John Day	—	50	Piped	\$15-30						
27.	Lower Camp Creek — USFS 39 miles N. of John Day on Forest Road 36	—	6	Stream	\$6						
28.	Silvies Rendezvous Coach/RV Park 11 miles S. of Seneca and 3.5 miles W. of Hwy 395 on Forest Road 3930	—	11	Piped	Call for availability and prices 541-573-5150						

Grant County Campgrounds

Legend



Sources: U.S. Forest Service; Bureau of Land Management; Oregon Parks and Recreation Dept. *Under development

Dayville & John Day

DUKE WARNER REALTY

Grant County:
A great place to call home.



DAYVILLE CAFE!

Prime Opportunity To Be Your Own Boss.
Highly Reputable & Established.
\$259,000 RMLS #20530432



SEE TO APPRECIATE!

24.99 Acres (subject to lot line adjustment),
Views Of The Mts, Off West Bench Road, 7 Tax
Lots, Dividable.
\$82,000 RMLS #11554207



2 ACRES CLOSE TO CANYON CITY!

Views, Cement Slab, Shared Spring.
\$87,000 RMLS #21489864



5.67 ACRES W/MT VIEWS!

Located In City Limits, Dividable, Good Access,
Zoned Residential, City Services Available.
\$80,000 RMLS #14393351



DP HOME ENTERTAINMENT BUSINESS FOR SALE!

Step Right In, Be
Your Own Boss,
Turn-Key Business,
Radio Shack, Dish
TV, Cellular Phones,
Excellent Cash
Flow, No Real Estate
Included.
**\$75,000
RMLS #21577527**



BEAUTIFUL LOG HOME ON 12+ ACRES!

Fabulous Mt Views, Close To National Forest, 2
Story w/Daylight Basement, 4 Bedroom, 2.5 Bath,
Large Family Room, Decks, Patio, Landscaped, 2
Fish Ponds, 3 Bay Garage w/Attached Greenhouse,
Pasture, Shared Spring w/Cistern, Well w/Cistern.
\$585,000 RMLS #22521841



GRANT COUNTY BUILDING SUPPLY!

Successful Turn Key Business, Inventory
Included.
\$450,000 RMLS #19696315



LONE ELK MARKET, SPRAY OREGON!

Thriving & Tidy Turn Key Business, Prime
Location, Country Comfortable Atmosphere, Great
Opportunity To Be Your Own Boss, Groceries,
Meals, Ice, Propane, Fuel.
\$583,000 RMLS #21211211



CANYON CITY HOME ON 3+ ACRES!

Fabulous Canyon Mt views, Family Style Home w/
Daylight Basement, Open Floor Plan, 5 Bedroom, 3
Bath, Deck, Patio, Landscaped, Sprinkler System,
Water Feature, Fenced, Storage Shed.
\$430,000 RMLS #22152798



LORI HICKERSON, Principal Broker, GRI
Office: 541-575-2617 • ljh@ortelco.net

SALLY KNOWLES, Broker, GRI
Office: 541-932-4493 • sknowles@ortelco.net

BABETTE LARSON, Broker, GRI
Office: 541-987-2363 • ddwr@ortelco.net

Licensed in the State of Oregon

www.dukewarnerrealtyofeasternoregon.com



ED'S FAST BREAK
W. Hwy. 26, John Day • 541-575-2585

Fuels • Lubes • Propane • Service • Shell Station

AFTER HOURS GAS NOW AVAILABLE!
with credit card only



ED'S FAST BREAK
At the Y in Canyon City • 541-575-1942

5277054-1

THINGS TO DO

Take a Hike

PHOTO BY JINA CARNIGLIA

Ready to stretch your legs? Grant County offers a wide range of hiking adventures, from short loops to multiday treks. From a stroll around a tranquil lake to summiting a mountain peak, hikers of all abilities will find something to love. Here are a few of our favorite trails.

CHALLENGING

Onion Creek

The 6.3-mile Onion Creek Trail offers incredible views in all directions, as well as access to Strawberry Mountain, Lakes Basin and Skyline trails. This trail packs 3,500 feet of elevation gain and is open to horses and foot traffic from June to November.

Directions: Take County Road 60 south from Prairie City. At the national forest boundary, the road becomes Forest Road 6001. Trailhead is marked on the right side of the road about halfway to Strawberry Campground. To access from Roads End Trailhead, take Forest Road 14 south from Prairie City. Turn onto Forest Road 16 and follow through Logan Valley to junction with Forest Road 1640. Follow signs for High Lake and Strawberry Mountain Wilderness on Forest Road 1640. Roads End trailhead is ¼ mile before end of road (at High Lake Rim).

Mud Lake

A great trail for those seeking solitude and lakes. This lightly used trail has about 1,700 feet of elevation gain over 3.5 miles. It is open to horses and foot traffic and is accessible during the summer months

Directions: From Prairie City, follow County Road 62 to Summit Prairie. Go west on Forest Road 16 to Forest Road 924. Turn right on Forest Road 1648. Go to Forest Road 021. Go approximately 1.5 miles to Forest Road 039. Follow Forest Road 039 to the trailhead.

Fields Peak

This moderately used trail is 4 miles long and gains 800 feet of elevation. Primarily used during hunting season, this trail gives access to Fields Peak and McClellan Mountain. The Fields Peak Trail is open to motorized vehicles, while the McClellan Mountain Trail is not.

Directions: From John Day, travel west on U.S. Highway 26 approximately 18 miles to Forest Road 21. Drive south on Forest Road 21 approximately 8 miles to Forest Road 2100115. There will be a sign along the road indicating the direction to McClellan Trailhead. Drive east on Forest Road 2100115 for ¼ mile to Forest Road 2160. Drive south on Forest Road 2160 for a short distance to Forest Road 2160041. Continue driving south on Forest Road 2160041 to the trailhead. Parking is available for several passenger vehicles and stock trailers.

MODERATE

Strawberry Lake

This popular 1.5-mile trail takes hikers from the Strawberry Campground to Strawberry Lake, gaining 700 feet of elevation along the way. The trail is readily accessible in summer and fall. The lake is great for fishing and swimming and has a trail that runs all

the way around it. For a more challenging hike, keep walking along the left side of the lake and follow the signs to Strawberry Falls (2.8 miles), Little Strawberry Lake (3.4 miles) or Strawberry Peak (6.1 miles).

Directions: From Prairie City, follow County Road 60 south about 12 miles to the trailhead at Strawberry Campground.

EASY

Magone Lake Trail

This delightful 1.5-mile trail rings Magone Lake and has informational plaques spaced at intervals. A nearby campground has firepits and bathrooms, and there's a boat dock at one end of the lake. Readily accessible in summer and fall.

Directions: From U.S. Highway 26 between John Day and Prairie City, turn north on County Road 18 to Forest Road 3620. Go south on 3620 to Forest Road 3618. Turn west on the 3618 Road to the Magone Lake Day Use Area.

**CALL OUR
OFFICE TODAY FOR
A FREE MARKET
ANALYSIS**



Thank you Grant County for another successful year!

We are now celebrating 43-plus years as Grant County's oldest locally owned Real Estate Company. We are proud to be able to live and raise our families in Grant County. We are your neighbors and work alongside of you every day in an effort to make Grant County a better place to live.

Like you, we pay local and county taxes, support our schools, the hospital, and serve on various boards and committees, and contribute our time and money to many worthwhile causes such as:

Special Olympics - CASA - American Legion - Senior Meals - G.C. Ministerial Association - Grant County Fair - Chamber of Commerce - Timber Truckers Light Parade - Boy Scouts - FFA - Swim Team - Little League - Dance Team - Volleyball - Grad Night - BowHunters - John Day Golf Course - Carrie Young Memorial - Kam Wah Chung Museum - Seneca PTA - Awana - local churches - charities - special events, and the list goes on.

In today's ever changing times of sophisticated financing and continuing change of legal procedures, it is very difficult for the average property or business owners to buy, sell or trade his or her own property, and be assured that no problems will emerge at a later date. Trained professional real estate assistance will insure that all current laws and procedures are followed and that a happy and satisfied seller and buyer relationship exists.

If you are thinking of buying or selling real estate we hope that you will support a local realtor who lives in the area, understands our market and is available on short notice to assist with unscheduled visitors.

WE WORK VERY HARD TO GET YOU TOP DOLLAR FOR YOUR PROPERTY!

We appreciate your business!

Your friends at Eastern Oregon Realty

Jerry, Traci, & Pete



Member of State & National Assoc. of Realtors
Multiple Listing Exposure
Senior Real Estate Specialist

Accredited Buyer Representation
Seller Representation
IRS 1031 Tax Deferred Exchanges

Home Warranty Program Buyer & Seller
State & National Exposure
Visit our popular website
easternoregonrealty.net



Jerry Franklin
541-820-3721



Traci Frazier
541-620-0925



Pete Teague
541-620-0841

**Stop by our office anytime at the OLE Bank building
160 East Main, John Day or call for a free
market analysis and new loan information**

541-575-2121

**Quality Service - Experienced Agents
Satisfied Customers - Lasting Friendships**

S277666-1

Get on the Water

PHOTO BY MEGAN BERNARD

Grant County's wealth of rivers, streams and other water bodies leave no shortage of aquatic activities to enjoy. Whether it's fishing, floating, swimming or just relaxing on the water, there is something for everyone.

The John Day River, one of the longest undammed rivers in the U.S., flows through Grant County.

The three separate forks, North, Middle and South, offer Class 1 and Class 2 rapids. With no dams to control water flow, the rapids and water levels fluctuate and should be scouted ahead of time. March to June, depending on the water level, is usually the best time to float or paddle the John Day.

For current rules and flow-level forecasts, contact the Bureau of Land Management's Prineville office at 541-416-6700.

Additional information is also available from the Oregon Parks and Recreation Department at 503-986-0707 and the Grant County Chamber of Commerce at 541-575-0547.

Magone Lake, a Grant County gem, offers abundant opportunities for fishing, paddling, and swimming in the lake's shallow edges or areas in the middle where the water can be as deep as 100 feet. The lake features a 1.5-mile trail along the water's edge that is accessible for all fitness levels.

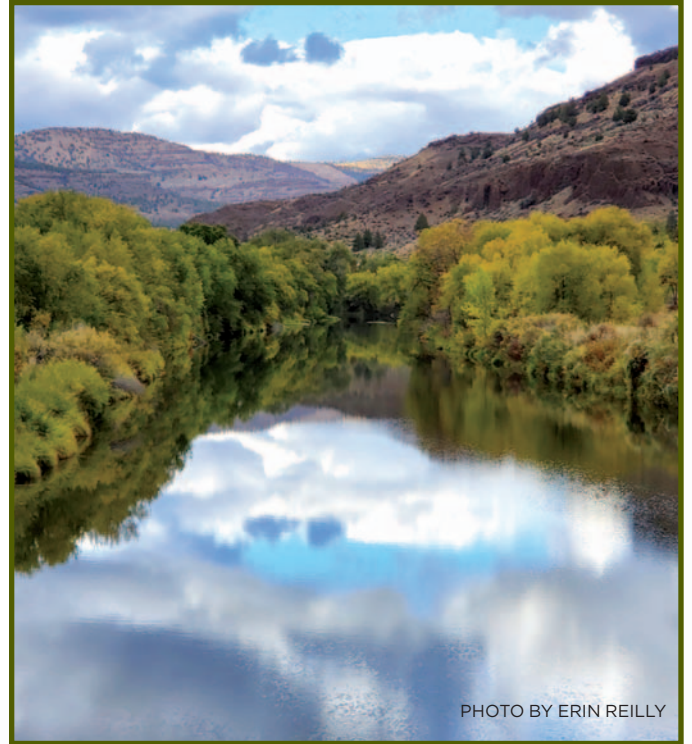


PHOTO BY ERIN REILLY



Enjoy John Day Valley's mild climate and clear skies. Play all year round on great fairways and greens.

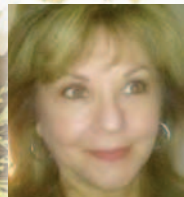
- Cart & Club Rentals Available
- Great Rates!



JOHN DAY GOLF COURSE • 541.575.0170

27631 Golf Club Rd., One Mile West of John Day

S274665-1



SHARON'S INSURANCE SERVICES

46470 BLUEBIRD RD,
JOHN DAY OREGON 97845

WE HAVE YOU COVERED

SHARON R LANG - OWNER/AGENT

COMMERCIAL/SURETY/PERSONAL HOME
& AUTO/AND RECREATIONAL TOYS

INSUREWSSHARON@AOL.COM

PHONE 541-575-0056 FAX 541-628-7153
CELL 360-921-1975

LICENSED IN OR, WA, CA, ID & AZ
LICENSE#2703664

S284405-1

The helpful place.

CRAFTSMAN

S274753-1

Nydam's **ACE Hardware**

Boyd Bears • Large Kitchen Center • Specialty Candles • Great Gift Selection



652 W. Main, John Day • 541-575-0549

Remington **keeshaw** Nikon BURRIS LEUPOLD C&S Bushnell

YOUR OUTDOOR RESOURCE IN DOWNTOWN BAKER CITY.

BIKES | SKIS | INFO
& MORE



1828 Main Street
Downtown Baker City, Oregon
(541) 523 - 1668
TheTrailheadBakerCity.com

EASTERN OREGON
POWDER AWAITS...



Anthony Lakes

MOUNTAIN RESORT AnthonyLakes.com

S274742-1

SPIN YOUR WHEELS

Bicycling

Cycle Oregon, the state's premier supported bicycle touring event, chose Grant County as the focal point for its signature weeklong ride in 2022, and with good reason: the John Day Valley and surrounding mountains and gorges offer a spectacular variety of scenery for two-wheeled travelers to enjoy.

Cyclists can revel in interesting geological formations throughout the Sheep Rock Unit of the John Day Fossil Beds National Monument and Picture Gorge, ride by hayfields and ranches and pedal through the towering pines of the Malheur National Forest.

With so much scenery on tap, the local biking community is growing with people moving to the area and enjoying the one-of-a-kind biking experiences that only Grant County can provide.

For additional cycling routes, visit ridewithgps.com

TIPS FOR MOTORISTS

- When passing cyclists, give them a wide berth, and ensure there is enough clearance to return to the lane without endangering other riders who may be farther ahead.
- When stopping a vehicle on a riding route, ensure no riders will be struck before opening the door. A cyclist who gets "doored" can be seriously injured.
- Be alert to changes in rider activity or position. Cyclists have the same rules and rights on the road as drivers.
- Slow down in riding areas.

Grant County Bike Rides

Ride 1 11 miles

On this short trip near town, riders see breathtaking views of Canyon Mountain and the John Day Valley. Leave John Day headed east on Highway 26 for 3 miles, turning right onto Dog Creek Road. After a little over a mile, the paved road takes a 90-degree turn onto Marysville Road/County Road 52. Riders descend into Canyon City and take a right turn, heading north on Highway 395 back into John Day.

Ride 2 14 miles

A pleasant easy ride that includes 10 miles of paved road and 4 miles of very smooth-packed gravel. Start in Prairie City and travel south on South Main Street and then turn left on Southwest Bridge Street. Continue straight on through Summit Prairie Road for about 7 miles and then make a left turn onto County Road 61. You'll pass Riverside School House Bed and Breakfast and then take the first available left turn looping back to Highway 26. Turn left on Highway 26 and you will be traveling back to Prairie City.

Ride 3 62 miles

John Day to Dayville, out and back

John Day to Dayville, out and back

This simple trip provides views of ranchland and wildlife. Start in John Day and head west on Highway 26 to Dayville. Be sure to watch out for rumble strips while riding. Once you get to Dayville, which is about 31 miles away, there are public toilets and water in the city park. Riders can get a cup of coffee, enjoy local restaurants or grab a snack at the Dayville Mercantile. Return to John Day for the final 31 miles of the round trip.

Ride 4 100 miles

Middle Fork of the John Day River (50 miles)

See river restoration for fish migration, forests, ranchland, wildlife, hot springs and rock cliffs on this route. Start at Bates State Park (from John Day, take Highway 26 for 31 miles east to Austin Junction, turn left on Highway 7 and then left on County Road 20). Travel west on County Road 20 until you reach the end of the road at Highway 395. Cross Highway 395 and continue straight until you end at Ritter Hot Springs (mile 50). There is a hotel, pool and hot springs there for resting.

Ride 5 138 miles • two-day trip

John Day to Spray

See Picture Gorge, the John Day River, the John Day Fossil Beds National Monument and orchards on this long route. Start in John Day and ride west on Highway 26 to Dayville, which is about 31 miles. Then continue to Picture Gorge and turn right on Highway 19. If a break is needed, the Thomas Condon Paleontology Center is available about 2 miles ahead on Highway 19. Continue on State Highway 19 until you make it to Kimberly. In Kimberly, there will be another opportunity for a break. Continue on Highway 19 for 13 miles until you reach Spray. A motel, minimart, camping and swimming are available in Spray. Return to John Day by the same 69-mile route.

The Old West Scenic Bikeway 174 miles

One of 17 Oregon Scenic Bikeways, this challenging trek meanders through mountains and gorges with plenty to see along the way, including the Strawberry Mountains, the covered wagon overlook, the John Day River and the John Day Fossil Beds National Monument. Starting at the Kam Wah Chung State Heritage Site in John Day, the bikeway travels east on Highway 26 through Prairie City to Austin Junction. There the route turns left onto Highway 7 for about a mile before turning left again onto County Road 20. The bikeway follows the Middle Fork John Day River for about 40 miles to Highway 395 and turns left for another 13 miles to Long Creek. Taking a right onto Highway 402, the route continues through Monument to Kimberly, where it turns left onto Highway 19. The route travels south through the John Day Fossil Beds National Monument and then turns left onto Highway 26 through Picture Gorge, Dayville and Mt. Vernon before returning to John Day.



Mountain Biking

Mountain biking is a sport that is steadily gaining ground in the county. There are several trails where mountain bikers can enjoy serene forest scenery with minimal traffic. The Eastern Oregon Trail Alliance is working on projects at the John Day Bike Park and Magone Lake. The bike park is already open, and 17 miles of what will ultimately be a 28-mile trail network at Magone Lake should be complete by the end of this year.

While construction continues on these two projects, some of the smaller tracks are already available for the family to enjoy. A 3.25-mile trail was recently completed at Magone Lake with many single-track features to enhance a biker's experience. This is an easy track for the family to enjoy and is open for use.

Located next to the Seventh Street Sports Complex in John Day, the John Day Bike Park provides a little under 2 miles of single-track trails to ride as well as a pump and flow track. This is another area that is perfect for beginners and the family. The Morrow/Grant County OHV Park in northern Grant County also has a variety of trails bikers can explore.

Local mountain bikers also shared a few of the trails they enjoy and noted that forest roads that are not specific to mountain biking also offer a great opportunity to take in the peaceful atmosphere.



TIPS FOR RIDERS

- Be aware of your surroundings and watch out for animals and people.
- Plan for a trip and make sure you are equipped for the ride. Some of these journeys take riders to secluded parts of the mountains where cellular signal can be sparse.
- Plan to go on a trip with a partner if needed.
- Be sure to carry extra innertubes and jackets.

North Fork Malheur Trail

This serene forest path travels through a canyon and along the North Fork Malheur Wild and Scenic River. The remote area gives riders an opportunity to enjoy the solitude of the forest.

The trail is open in April. Length: 12.4 miles

Directions from Prairie City: Turn onto South Main Street and follow to the junction with Bridge Street. Turn left onto Bridge Street and continue past the cemetery, where the road becomes County Road 62. Follow County Road 62 approximately 19 miles to the junction with Forest Road 16, then turn east onto Forest Road 16 and follow for approximately 11 miles to the junction with Forest Road 1675. Follow Forest Road 1675 for approximately 2 miles to the campground.

Riley Creek Trail

This trail travels along Riley Creek and provides access to McClellan Mountain Trail 216 and the McClellan Mountain Semi-Primitive Roadless Area, which is closed to all motorized vehicles. The trail allows visitors a wonderful ride in a quiet setting. The trail is soft compacted earth starting at the Riley Creek Trailhead and continuing along McClellan Mountain Trail 216. After connecting to Fields Peak Trail, it becomes more rutted and steep. The trail traverses beautiful wooded areas connecting with McClellan Mountain Trail, providing beautiful views of McClellan Mountain and Riley Mountain. Parking is limited to passenger vehicles. Parking for vehicles pulling trailers is available at the junction of Forest Road 2190 and Forest Road 2190589.

The trail is open in June. Length: 2.2 miles

Directions from John Day: Take Highway 395 south approximately 15 miles to the junction with County Road 63. Follow County Road 63 west approximately 6 miles to Forest Road 21. Follow Forest Road 21 approximately 5 miles to the junction with Forest Road 2190. The trailhead is located at the end of Forest Road 2190.

Big Creek/Summit Prairie Trail

Situated on the former Hines Railroad Grade, this trail provides an easy ride. The trail travels along a steep grade, filled to accommodate railroad traffic, as well as deep cuts through rocky hills and flat open areas. The cut rocks show geological layers. The dirt and rock trail travels through stands of ponderosa and lodgepole pine trees. Riders will see a variety of wildflowers and wildlife in the area.

The trail is used by visitors to Lake Creek Youth Camp and other nearby campgrounds, including Big Creek Campground and Murray Campground.

The trail is open in May. Length: 12.5 miles

Directions from Prairie City: Turn onto South Main Street. Follow South Main Street to Bridge Street, turn left onto Bridge Street and continue past the cemetery. Bridge Street then becomes County Road 62. Follow County Road 62 approximately 19 miles to the junction with Forest Road 16. Travel west on Forest Road 16 to the junction with Forest Road 1600133. Travel on Forest Road 1600133 to the junction with Forest Road 1600097, where the trailhead is located.

Grant County Motorcycle Rides

Ride 1 65 miles

Leave John Day headed west on Highway 26 approximately 18 miles to Forest Road 21 (sign reads Fields Creek, Murderers Creek). Turn left on Forest Road 21. Be sure to turn left where the road T's at Murderers Creek as the right fork becomes gravel after a few miles. Stay on Forest Road 21 to Paulina/Izee Highway (County Road 63) and turn left, going approximately 4 miles to Highway 395. Turn left and go approximately 17 miles to Canyon City and John Day. This ride is gorgeous and provides opportunities to see wild horses, deer and elk.

Ride 2 85 miles

Leave John Day and head east on Highway 26 for 13 miles to Prairie City. Turn right on Main Street and follow to the junction with Bridge Street. Turn left onto Bridge Street and continue past the cemetery, when the road becomes County Road 62. Follow County Road 62 approximately 19 miles to the junction with Forest Road 16. Turn right on Forest Road 16 and travel east approximately 36 miles until you reach Seneca. Turn right on Highway 395 and travel north approximately 26 miles back to John Day. This is an easy scenic loop for riders and provides multiple places to stop and enjoy the mountains and animals in the area.

Ride 3 108 miles

Leave John Day headed west on Highway 26 to Mt. Vernon. Turn right at the intersection and travel north through Long Creek on Highway 395. Turn right on County Road 20, ride approximately 34 miles to Highway 7. Turn right on Highway 7 and go about 1.5 miles to the intersection with Highway 26 at Austin Junction. Turn right on Highway 26 and ride over Dixie Summit and into Prairie City. Continue traveling 13 miles on Highway 26 back to John Day.

Ride 4 125 miles

Leave John Day headed west on Highway 26 through Mt. Vernon and Dayville. In Picture Gorge, approximately 7 miles west of Dayville, turn north on Highway 19 and travel past the Thomas Condon Paleontology Center. At the Kimberly Store, turn right to go through Monument to Long Creek. In Long Creek, turn right on Highway 395 and drive south to Mt. Vernon. Turn left on Highway 26 and head east back to John Day.

Ride 5 197 miles

Leave John Day headed east on Highway 26 through Prairie City. At Austin Junction turn left on Highway 7 for approximately 25 miles, and after you cross the railroad tracks watch for the sign for Sumpter. Turn left and it's 2-3 miles into Sumpter. From Sumpter go north on the same road for approximately 19 miles to Granite. Continue west on Highway 244 to Highway 395. Turn left again and take Highway 395 south to Mt. Vernon and Highway 26. Turn left on Highway 26 and head back to John Day, which is approximately 8 miles.



SPIN YOUR WHEELS

Motorcycle Riding

Whether you're looking for a long, adventurous ride on your motorcycle with friends or a brief trip to admire the beautiful countryside, Grant County has so much to offer bikers. Minimal traffic, chances to meet other like-minded bikers, multiple restaurants in multiple cities and many curves on the highway are some attributes riders will enjoy.

Whether you're out for a casual afternoon ride or dedicate a day for traveling, Grant County has something for every biker.

TIPS FOR RIDERS

- Depending on the time of year, watch out for gravel.
- Be aware of your surroundings and watch out for animals.
- Plan for a trip and make sure you are equipped for the ride. Some of these journeys take riders to secluded areas in the mountains where cellular signals can be sparse.

*Your Stable
& Reliable
Connection*



FIBER FAST INTERNET • VOIP PHONES

1(800)848-7969 or (541)932-4411



**One Telephone Dr
Mount Vernon, OR 97865**

**155 W Main St
John Day, OR 97845**



S276957-1



AUTO & TRUCK PARTS

"NAPA Know How"

**Great Parts, Great
People, Great Prices.**

**JOHN DAY
AUTO PARTS**

721 W. Main St. • John Day

541-575-1850

Open Mon-Fri 7am-6pm

Sat 8am-5pm

Open Sunday

Proudly Serving
Grant County
since 1966

- Your source for automotive, truck and tractor parts & accessories

- Full automotive machine shop

- Outside salesmen

- Full line Martin Senour paints

- ASE-Certified countermen

- Oxygen & acetylene

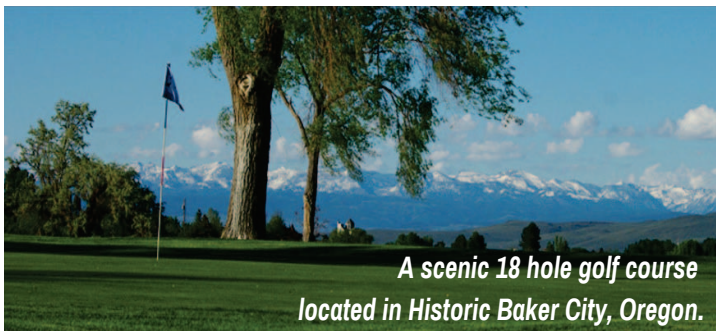
- Steel sales

S276958-1

- **Burgers**
- **Pizza**
- **Broasted Chicken**
- **Kid friendly until 8:00 PM**



**Open 11:00 AM to close
145 E. Main Street • John Day
541-575-1310**



*A scenic 18 hole golf course
located in Historic Baker City, Oregon.*

OPEN 7 DAYS A WEEK

**Cart & Club Rentals | Lessons available
Family-friendly & Fun**



**QUAIL RIDGE
GOLF COURSE**

QuailRidgeBakerCity.com

(541) 523-2358

S280956-1



Grubsteak Mining Co.

RESTAURANT & LOUNGE

Prime Rib • Steaks • Hamburgers

Open 7 Days a Week

11AM-9PM

**Family Owned
Since 1980**



Take-Out • Lunch • Dinner

The oldest established restaurant in Grant County

149 E. Main St., John Day • 541-575-1970

S280973-1

SPIN YOUR WHEELS

Off-Roading

Grant County offers miles of trails for those looking to ditch the blacktop for a motorized off-road experience. The remote, rugged and rocky terrain is ideal for ATVs, dirt bikes and jeeps.

Riders who have traversed the wild country in the past have raved about the remoteness of the area and the opportunities to enjoy the mountains, streams and forests uninterrupted.

Two great riding areas for ATVs, dirt bikes and 4x4s can be found at Little Canyon Mountain near Canyon City and the Morrow/Grant County OHV Park, 82 miles northwest of John Day off Highway 207 (35 miles south of Heppner), which offers trails for beginners all the way up to experienced riders.

Morrow/Grant County OHV Park

There are plenty of trails at the Morrow/Grant County OHV Park, and plenty of amenities. Open season is May through December, depending on weather, and there is a limited riding area open during the off-season.

The park boasts 200 miles of trails (20 miles are jeep-accessible), including routes for a variety of skill levels. Some areas have novice and advanced trail systems in the same area for family fun.

There is an RV park, which has tent spaces and cabins available for rent, with ADA restrooms and showers nearby. Wi-Fi is available in open season, and certain areas allow for cell service, including at the main entrance and near the stop sign at Highway 207.

Day-trail riding is free, and there are picnic areas. Small stocked fishing ponds, a hiking trail and a golf driving range provide more recreation opportunities.

Volunteer EMTs are around on most weekends during open season, and law enforcement is on patrol year-round. During the off-season, drive past the main entrance on Forest Road 21, travel about 3 miles and turn right at Forest Road 2128 (a sign reads "day use"), travel about 1 mile and unload in the day-use area on the right-hand side.

Park officials remind the public to stay safe and aware of your surroundings and to avoid riding alone. Wear appropriate riding gear, including a helmet and protective gear.

Little Canyon Mountain

A short drive from Canyon City will take you to this popular recreation spot that is open year-round.

Turn onto East Main Street from Highway 26. The road is also called Marysville Road and County Road 52.

A kiosk on site shows designated routes for motorcycles, ATVs and jeeps.

BLM officials note that to the southeast is land designated by the Forest Service as Strawberry Mountain Wilderness, which is closed to off-road vehicle use. Riders should also avoid private property and active mining claims. They warn conditions are dangerous when the ground is muddy or icy.





RadioShack® Dealer

DP HOME ENTERTAINMENT

137 E. Main Street, John Day 541-575-1637



Better Blooms & GARDENS

For all your gardening needs.

541-820-3329

65153 Highway 26

Between Prairie City and John Day



GUYON SPRINGS FARM STORE + KITCHEN

We are a small, no-till farm using organic practices, growing vegetables, flowers and culinary herbs. We are located one mile up the South Fork Road in beautiful Dayville, Oregon.

We also have camping and glamping venue with three units. Look us up on Airbnb at Guyon Springs.

Serving breakfast every Saturday and Sunday. Please call or text ahead to reserve a spot! (Think Cowboy Dinner Tree). Check us out on Facebook for weekly menus.

2022 CSA Shares Available. Call or Text to reserve! 541-602-0303



1188 Brewing Company



Visiting Kam Wah Chung, Painted Hills, Hiking the Blue Mountain Trail or the John Day Fossil Beds? Be sure to come see us! We are a family friendly, full-service Pub / Restaurant. Craft Beer brewed in house. Open for breakfast, lunch & dinner 7 days/week with outdoor seating and space for dogs.

141 E MAIN ST, JOHN DAY, OR
541-575-1188 1188BREWING.COM



PARKS MAIN OFFICE

Reservations • Comments • Questions
365 W. Highway 74 • PO Box 428
Lexington, OR 97839
Email: mcparks@co.morrow.or.us
Reservations: 541-989-8214
Main Office: 541-989-9500

ANSON WRIGHT PARK CAMPGROUND 47500 Hwy 207 - Spray-Heppner Heppner, OR 97836	CUTSFORTH PARK CAMPGROUND 58430 Willow Creek Rd Heppner, OR 97836
-------------------------------------------------------------------------------------------	--------------------------------------------------------------------------------

Reservations: 541-989-8214



OHV PARK

MORROW COUNTY OHV PARK CAMPGROUND
71000 E. Morphine Ln, aka 71000 FS Rd 21
Heppner, OR 97836
Reservations: 541-989-8214

www.morrowcountyparks.com



742 W Main St. John Day, OR



Catering Services Available
541-575-0151



Deli Foods
Snacks

Groceries

Cold Drinks

Hot Coffee

Diesel/Gas

RV Drive-Thru

Clean Restrooms

Always Friendly Smiles

Mini Market

Food & Fuel

Hwy. 26 - **MT. VERNON**

541-932-4223

S280957-1

Grant County Health Department

Public Health & Family Health Care

Quality Primary Healthcare for All of Grant County

Office hours M-F 8am-5 pm

Clinic apt. hours M-Th 7am-6pm

528 E. Main St., John Day

541-575-0429 ~ 888-443-9104



SERVICES PROVIDED

- Primary Care
- Men, Women & Children's Exams
- Contraception & Pregnancy Testing
- Specialist Referrals
- High Risk Infants & Maternity Nurse Home Visits
- STI Testing
- Immunizations
- CaCoon
- WIC
- Routine Lab Work
- Grant Union SBHC
- Healthcare Just Down the Hall
- Well-care Exams
- Counseling Services
- OSAA Required Exams
- Sick Visits & Rapid Lab Work Onsite
- Immunizations
- & Just a Place to Chill

For all your healthcare needs, the professionals of the Grant County Health Department are here to help. The health department accepts private insurance for all the programs offered as well as Medicare and Medicaid, and selfpay individuals are offered a sliding fee based on income.

Get Help, Understanding and Hope

Community & Counseling Solutions

Changing Lives

528 E. Main Street
John Day
541-575-1466

- mental health services • chemical dependency
- substance abuse treatment

S274756-1

Journey through Time

A scenic byway into the past

PHOTO BY ERIN REILLY

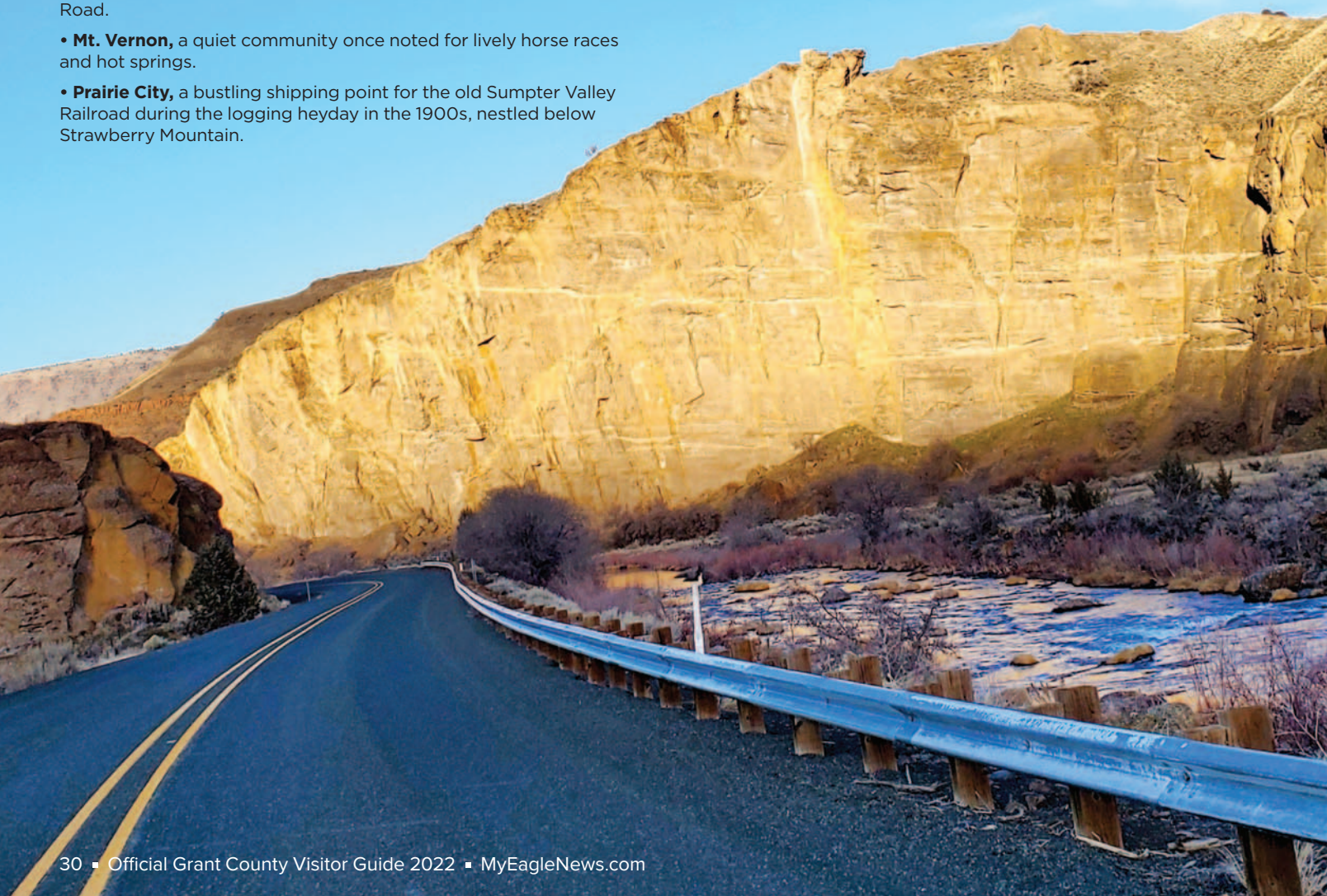
History comes to life in Oregon's Journey Through Time, an auto route that loops through Northeastern Oregon.

Along the way, visitors are treated to stunning scenery. It's a modern-day tour that links the land's prehistoric past, the influx of white settlers on the Oregon Trail and the fabled allure of gold.

The scenic byway departs from Interstate 84 at Biggs Junction and follows Highway 97 south to Shaniko, where it turns onto Highway 248 to Antelope and Fossil. From there, it joins Highway 19 through Spray and into Grant County at Kimberly. After traveling through the John Day Fossil Beds National Monument, Highway 19 meets Highway 26, where the byway travels east through Dayville, John Day and Prairie City before climbing over Dixie Butte. At Austin Junction, the route turns north onto Highway 7 and out of Grant County to Baker City.

If you take the journey, don't miss these stops in Grant County:

- **Kimberly**, a former stage stop on a fertile river delta that still boasts orchards producing a bounty of cherries, peaches, apricots, apples and pears.
- **John Day Fossil Beds National Monument**, with picnic areas, hiking trails and a visitor center. Get a short course on the 40 million years between the extinction of the dinosaurs and the start of the Ice Age.
- **Dayville**, a former stage stop on the historic The Dalles Military Road.
- **Mt. Vernon**, a quiet community once noted for lively horse races and hot springs.
- **Prairie City**, a bustling shipping point for the old Sumpter Valley Railroad during the logging heyday in the 1900s, nestled below Strawberry Mountain.
- **John Day**, where the Kam Wah Chung State Heritage Site recalls the Chinese workers who settled there during the railroading and gold mining days of the late 1800s. The Grant County Ranch and Rodeo Museum paints another picture of the region's agricultural roots.
- **The Covered Wagon Overlook on Highway 26**, east of Prairie City, commemorating the arduous journey of the pioneers.



WHERE TO WORSHIP IN GRANT COUNTY



JOHN DAY UNITED METHODIST CHURCH

Sunday Worship • 9AM
(541) 575-1326

johndayUMC@gmail.com

126 NW Canton, John Day



Like us on Facebook!

S171933-1

St. Thomas Episcopal Church

Sunday Morning
Worship 10am

Check for location
on Facebook:

St. Thomas
Episcopal Church
Canyon City, OR
541-620-1436
541-270-5903



FIRST CHRISTIAN CHURCH

Sunday School..... 9:45 am

Sunday Worship 11 am

Full Gospel-
Come Grow With Us

541-575-1202 Church
311 NE Dayton St, John Day
Pastor Al Altnow
fccjohnday@centurytel.net

S172690-1

CHURCH OF THE NAZARENE

Sunday School for all ages 9:45am

Sunday Morning Service 10:45am

Sunday Evening Service 6:00pm

**Weekly Small Groups
& Bible Studies**

Sonshine Christian School - Ages 3 & 4

Pastor Randy Johnson

Call for more information

521 E Main, John Day • 541-575-1895

www.johndaynazarene.com

S171932-1



VICTORY BAPTIST CHURCH

Independent • Fundamental • Premillennial

Sunday School.....9:45 am

Sunday Preaching 11 am

Junior Church 11 am

Sunday Evenings..... 3:30 pm

Wednesday

Bible Study & Master Club 7 pm

Sunday Men's Prayer Meeting 7 pm

108 S. Washington Street

Canyon City

541-575-2688/541-575-0844

S274663-1



~ Explore, Discover, Feel the Majesty ~

www.harneycounty.com

S274750-1

Familiar, Friendly Service
YOU CAN TRUST



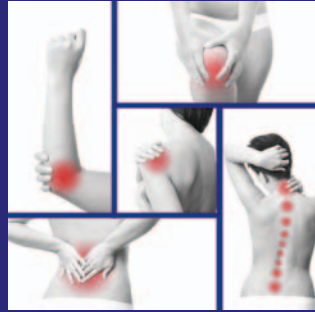
We're here when you need us!

541-575-0629 • www.lenspharmacy.com

120 E. Main, John Day

5275514-1

Tension? Join Pain? Chronic Headache?



Chiropractic care can help you get to the root of your symptoms without potentially harmful drugs or surgery.

**CALL NOW FOR YOUR
APPOINTMENT
AND START GETTING RELIEF**

BLUE MOUNTAIN CHIROPRACTIC HEALTH CLINIC
541-575-1063 | 155 NW 1st Avenue, John Day

HAVEN HOUSE *Retirement Center*

Retirement & Assisted Living Facility • Nursing Home

Haven House is located on a full block in downtown Fossil, Oregon. We offer easy access to area services that include: general store, beauty shops, medical clinic, post office, restaurants, churches, senior center, museum and library. Haven House is always open to friends, family and community members, providing a warm, friendly supportive atmosphere.



714 Main St. Fossil, OR 97830
Phone: (541) 763-4651
havenhousercc@gmail.com



5282485-1



GIBCO
AG & INDUSTRIAL

541-575-2050

312 N. Canyon City Blvd., Canyon City

- Behlen Livestock Equipment
- CHS Payback & Nutrena Feeds
- Wide Variety of Tack
- Pro Pac Dog & Cat Food
- Powder River Dealer
- Keystone Barbed Wire & Rolled Wire
- Implements & Parts
- Baling Twine
- Headgates & Irrigation Supplies
- Cargill Salt
- Smart Lic Dealer
- Backwoods Water Troughs

5281363-1

Bates State Park

28 primitive sites:

Tent or RV, day use areas with restrooms

BATES, OREGON

1 mile north of Hwy 26 & Hwy 7 Junction

oregonstateparks.org

Clyde Holiday State Park

**31 sites, toilets, water, showers, hiking,
tent/RV sites, electric**

MT. VERNON, OREGON

2 miles east of Mt. Vernon

541-932-4454

5274743-1

Realtors
COUNTRY PREFERRED, REALTORS

Fred Winegar/Broker

541-620-1506

Amy Denman/

Principal Broker

503-577-7029

Wendy Cates

Principal Broker,

Owner

541-620-4239

Debbie Brown/ Broker

541-419-8156

Mike Moore/ Broker

541-542-2059



Come visit
us. We have
a lot to show
you!



Explore

April

Lake Creek Youth Camp Gala

541-575-1900 | grantcountyoregon.net/217/Fairgrounds | winegarm@grantcounty-or.gov

For The Love of Golf Scramble

541-575-0170 | johndaygolfclub@gmail.com

Rocky Mountain Elk Foundation Dinner & Auction

541-575-1900 | grantcountyoregon.net/217/Fairgrounds | winegarm@grantcounty-or.gov

Strawberry Mountain Gun & Knife Show

541-575-1900 | grantcountyoregon.net/217/Fairgrounds | winegarm@grantcounty-or.gov

May

BM Hospice's Strut, Stride, Straddle & Stroll

541-575-1648 | bluemountainhospital.org

Cinnabar Mountain Play Days

541-575-1900 | grantcountyoregon.net/217/Fairgrounds | winegarm@grantcounty-or.gov

Ty Evans Mule Clinic

541-575-1900 | grantcountyoregon.net/217/Fairgrounds | winegarm@grantcounty-or.gov

Quilt Show

541-575-1900 | grantcountyoregon.net/217/Fairgrounds | winegarm@grantcounty-or.gov

Cinco De Mayo Golf Scramble

541-575-0170 | johndaygolfclub@gmail.com

Club Memorial Scramble

541-575-0170 | johndaygolfclub.com | johndaygolfclub@gmail.com

Jackson Razzle Dazzle

541-575-0170 | johndaygolfclub.com | johndaygolfclub@gmail.com

Seneca Oyster Feed, Golf Scramble & Softball Tournament

541-542-2161 | senecaoregon.com | admin@senecaoregon.com

Joe Oakes Bull Bash & Ranch Rodeo

541-575-1900 | grantcountyoregon.net/217/Fairgrounds | winegarm@grantcounty-or.gov

June

'62 Days Celebration

541-620-0874 | 503-315-5964
541-575-0509 | canyoncityoregon.com | tocc1862@centurylink.net

Gold Rush Run & Walk

541-620-0874 | 503-315-5964 | 541-575-0509
canyoncityoregon.com | tocc1862@centurylink.net

Cinnabar Mountain Playdays Youth Rodeo

541-575-1900 | grantcountyoregon.net/217/Fairgrounds | winegarm@grantcounty-or.gov

Claire Owens Invitational Two-Day Golf Tournament

541-573-5150 | <https://www.silvies.us/>

BMW Riders of Oregon Rally

541-575-1900 | grantcountyoregon.net/217/Fairgrounds | winegarm@grantcounty-or.gov

Farmer's Market Spring Festival

johndayfarmersmarket.com

The Battle - Grant vs. Harney County Golf Tournament

541-573-5150 | <https://www.silvies.us/>

Calvary Horse Camp

541-575-1900 | grantcountyoregon.net/217/Fairgrounds | winegarm@grantcounty-or.gov

Jack 'n' Jenny Couples Tournament

541-575-0170 | johndaygolfclub.com | johndaygolfclub@gmail.com

Cornhole League Starts

541-575-0110 | jdccparksandrec.org | jdccparks.rec@gmail.com

Thadd's Place Golf & Gala

541-575-0170 | johndaygolfclub.com | johndaygolfclub@gmail.com

Family Fun Day & Grant County Health Fair

541-575-1900 | grantcountyoregon.net/217/Fairgrounds | winegarm@grantcounty-or.gov
541-575-1006 | cityofjohnday.com | ffedta@gmail.com

Summer Kickoff BBQ & 5K

541-575-0110 | jdccparksandrec.org | jdccparks.rec@gmail.com

July

Dayville 4th of July Celebration

541-987-2188 | gcoregonlive.com/cities/dayville | dville@ortelco.net

Long Creek Founders Day Picnic

541-421-3601 | gcoregonlive.com/cities/long-creek | citylc@centurytel.net

Monument 4th of July Fun Festival

541-934-2025 | cityofmonument.com | cityofmonument@centurytel.net

Prairie City 4th of July Celebration & Fireworks

541-820-3605 | prairiecitoryregon.net | pchall@ortelco.net

Silvies Fourth of July Celebration

541-573-5150 | <https://www.silvies.us/>

Firecracker 2x2 Golf Tournament

541-575-0170 | johndaygolfclub.com | johndaygolfclub@gmail.com



'62 Days Celebration

2022 Grant County Calendar of Events

Cinnabar Mountain Playdays

541-575-1900 | grantcountyoregon.net/217/
Fairgrounds | winegarm@grantcounty-or.gov

GIST Cancer Research Golf Scramble

541-575-0170 | johndaygolfclub.com
johndaygolfclub@gmail.com

Prairie City Fiber Fest

541-820-3605 | prairiecifyoregon.net
pchall@ortelco.net

Blue Mountain Healthcare Foundation Benefit Scramble

541-575-0170 | johndaygolfclub.com
johndaygolfclub@gmail.com

Whiskey Gulch Gang Demolition Derby

541-575-1900 | grantcountyoregon.net/217/
Fairgrounds | winegarm@grantcounty-or.gov

Wapiti Tournament

541-575-0170 | johndaygolfclub.com
johndaygolfclub@gmail.com

August

Two-Man Best Ball Golf Tournament

541-575-0170 | johndaygolfclub.com
johndaygolfclub@gmail.com

Grant County Fair

541-575-1900 | grantcountyoregon.net/217/
Fairgrounds | winegarm@grantcounty-or.gov



Rally for the Cure
Golf Scramble

Club Championship

541-575-0170 | johndaygolfclub.com
johndaygolfclub@gmail.com

September

Grant County Fly-In

541-575-1151 | grantcountyoregon.net/150/
Airport | walkerh@grantcounty-or.gov

Cross Country Golf Scramble

541-575-0170 | johndaygolfclub.com
johndaygolfclub@gmail.com

Last Chance Golf Scramble

541-575-0170 | johndaygolfclub.com
johndaygolfclub@gmail.com

Buckaroo Festival & Harvest Auction

541-934-2025 | cityofmonument.com
cityofmonument@centurytel.net

October

Dayville Scarecrow Contest

541-987-2188 | gcoregonlive.com/cities/
dayville | dville@ortelco.net

Farmer's Market Harvest Festival

johndayfarmersmarket.com

October Fest

541-575-0110 | jdccparksandrec.org
jdccparks.rec@gmail.com

Rally for the Cure Golf Scramble

541-575-0170 | johndaygolfclub.com
johndaygolfclub@gmail.com

The Goblin Open Golf Tournament

541-573-5150 | https://www.silvies.us/

November

Rodeo Court Coronation Dinner

541-575-1900 | grantcountyoregon.net/217/
Fairgrounds | winegarm@grantcounty-or.gov

Christmas on the Prairie

541-820-3605 | prairiecifyoregon.net
pchall@ortelco.net

December

Dayville Christmas Lighting Contest

541-987-2188 | gcoregonlive.com/cities/
dayville | dville@ortelco.net



Grant County
Fly-In

Dayville Community Christmas Celebration

541-987-2188 | gcoregonlive.com/cities/
dayville | dville@ortelco.net

Blue Mountain Hospital Auxiliary Bazaar

541-575-1900 | grantcountyoregon.net/217/
Fairgrounds | winegarm@grantcounty-or.gov

Timber Truckers Light Parade

Leslie Traylor | 541-620-4032

January

Snowflake Scramble & Chili Cook-Off

541-575-0170 | johndaygolfclub.com
johndaygolfclub@gmail.com

February

Daddy-Daughter Dance

541-575-0110 | jdccparksandrec.org
jdccparks.rec@gmail.com

Mother-Son Adventure Night

541-575-0110 | jdccparksandrec.org
jdccparks.rec@gmail.com

March

Annual Golf Club Meeting

541-575-0170 | johndaygolfclub.com
johndaygolfclub@gmail.com

T-ball

541-575-0110 | jdccparksandrec.org
jdccparks.rec@gmail.com

Golf Club Fundraiser

541-575-0170 | johndaygolfclub.com
johndaygolfclub@gmail.com

**STOP BY TODAY FOR
INCREDIBLE OFFERS
AND UNBEATABLE
SERVICE.**

**JOHN DAY POLARIS
821 W HWY. 26
JDPOLARIS.COM**

WARNING: Polaris® off-road vehicles can be hazardous to operate and are not intended for on-road use. Driver must be at least 16 years old with a valid driver's license to operate. Passengers, if permitted, must be at least 12 years old. All riders should always wear helmets, eye protection, and protective clothing. Always use seat belts and cab nets or doors (as equipped). Never engage in stunt driving, and avoid excessive speeds and sharp turns. Riding and alcohol/drugs don't mix. All riders should take a safety training course. Call 800-342-3764 for additional information. Check local laws before riding on trails. ©2017 Polaris Industries Inc.



Starting at
\$239⁹⁹

Starting at
\$209⁹⁹

**Come check out Gregg's
inventory of
products at Polaris.**

Blowers, earth augers, pruners
& much more

Ask about our 5 year warranty

**Locally Owned • Serving North East Oregon
and South East Washington Since 1995**

THINGS TO DO

Go to the Snow

PHOTOS BY JINA CARNIGLIA

Winter sports enthusiasts will find plenty of ground for cross-country skiing and 500 miles of groomed snowmobile trails along with four snow parks in the Grant County area. Snowmobile trails are groomed by volunteers from local snowmobile clubs. A state Sno-Park permit is required for parking at all snow parks. The permits cost \$25 and are available from the Department of Motor Vehicles and some local stores. They can also be purchased online at <https://tinyurl.com/24c9y3jm>.

Starr Ridge

The popular snow park at Starr Ridge features ample parking and primitive outhouse facilities. Across the highway is Starr Bowl, a popular sledding and tubing area for families with a warming hut. Cross-country skiers typically use the groomed snowmobile trails, while backcountry skiers and snowshoers can head east toward the wilderness area. Starr Ridge is on Highway 395 about 16 miles south of John Day.

Huddleston

Snowmobilers can access hundreds of miles of groomed trails at the Huddleston Snow Park, which features a warming hut with a fireplace, restrooms and a large parking lot. The Skyline access is located about 1 mile before Huddleston. Snowshoers and cross-country skiers can access miles of groomed and ungroomed trails at Huddleston, which is located on County Road 62 about 22 miles south of Prairie City.

Blue Mountain Summit

A new snow park has been developed on Blue Mountain Summit. Snowmobile trails groomed by three different clubs converge near the snow park, which is located on Highway 26 about 10 miles east of the Highway 7 junction.

Dixie

The old rope tow is currently out of commission, but there's still plenty of winter fun to be had at this snow park. Activities include sledding, innertubing and snowshoeing. There are also opportunities for snowmobiling and cross-country skiing on ungroomed trails. Located on Highway 26 about 9 miles east of Prairie City.

For more information about winter recreation in Grant County visit grantcountysnowballers.com



Explore

THINGS TO DO

Drop a Line

PHOTO BY JINA CARNIGLIA

Countless bodies of water and miles of rivers and creeks make Grant County stand out for people looking for an aquatic diversion while in Eastern Oregon. Try your luck fishing for steelhead, trout, kokanee, bass and other species with locations ranging from remote — with a good hike required to access some sites — to right in town.

A big highlight in the county is Magone Lake, which offers an abundant amount of recreational opportunities, including fishing, relaxing on the water and swimming. The lake is stocked by the Oregon Department of Fish and Wildlife with 8- to 15-inch eastern brook and rainbow trout. It features a 1.5-mile trail skirting the water's edge, easy enough for everyone in the family to enjoy. There is also a sandy beach with great terrain for building sandcastles.

For fishing information, check the **Oregon Sport Fishing Regulations** booklet, available where sporting licenses are sold and online at www.dfw.state.or.us, or call 800-720-6339. Special fishing regulations apply in some waterways, as the John Day Basin is home to protected and recovering fish species.



Fishing spots in Grant County

There are plenty of great fishing spots to explore in the Grant County area

1. Bull Prairie Reservoir — 27 acres, boat ramp; motors prohibited. From Spray, go 4 miles east on Hwy. 19 to Hwy. 207. Take 207 north 18 miles to FR 2039 and go 4 miles to lake. Rainbow, brook trout.

2. Cavender Pond — 15 acres on private land. From Monument go half-mile west on Hwy. 402; right on pond access road. Rainbow trout, largemouth bass.

3. Long Creek Pond — 2 acres, located 6 miles west of Long Creek just off Hwy. 402. Rainbow trout.

4. Jump Off Joe Lake — 5 acres in Umatilla National Forest. From Granite, take FR 10 west, then FR 45 south 4 miles to a pullout near trailhead. Hike 0.25 miles to the lake. Triploid brook trout.

5. Lost Lake — 15 acres in Umatilla Forest. From Granite, take FR 10 west to FR 45. Go south about 0.5 miles, turn left on FR 020 to gate. Hike 2 miles to lake. Rainbow trout.

6. Olive Lake — 160 acres in Umatilla Forest. From Granite, go west on FR 10 for 11 miles. Boat ramp, docks, camping available. Rainbow trout, kokanee.

7. Wildcat Pond — 2 acres in Malheur National Forest. From Hwy. 395, take Co. Road 88 west 8 miles, go left on 741 for 3.5 miles to FR 3955, then right 4 miles to FR 250. Rainbow trout.

8. Hog Creek Pond — 1 acre in Malheur Forest. From Hwy. 395 at Ennis Creek, take Co. Road 88 east 5 miles to FR 432, go left for 3.5 miles to 794 and 0.5 miles to pond. Rainbow trout.

9. Magone Lake — 50 acres in Malheur Forest. From John Day, travel 9 miles east on Hwy. 26 to Keeney Fork Road. Go north 18 miles to FR 3620, then south 3 miles. Rainbow, brook trout.

10. Aldrich Gulch Pond — 0.5 acres on BLM land. Strenuous hike-in access only, 14 miles south of Dayville, then 0.5 miles east up Aldrich Gulch. No designated trail, Rainbow trout.

11. Wyllie Gulch Pond — 0.5 acre the Phillip Schneider Wildlife Area, 17 miles south of Dayville, then 3.5 miles up Murderers Creek to Wyllie Gulch. Hike-in access only, 3 miles up Wyllie Gulch, no designated trail, closed Feb. 1-April 14. Rainbow trout.

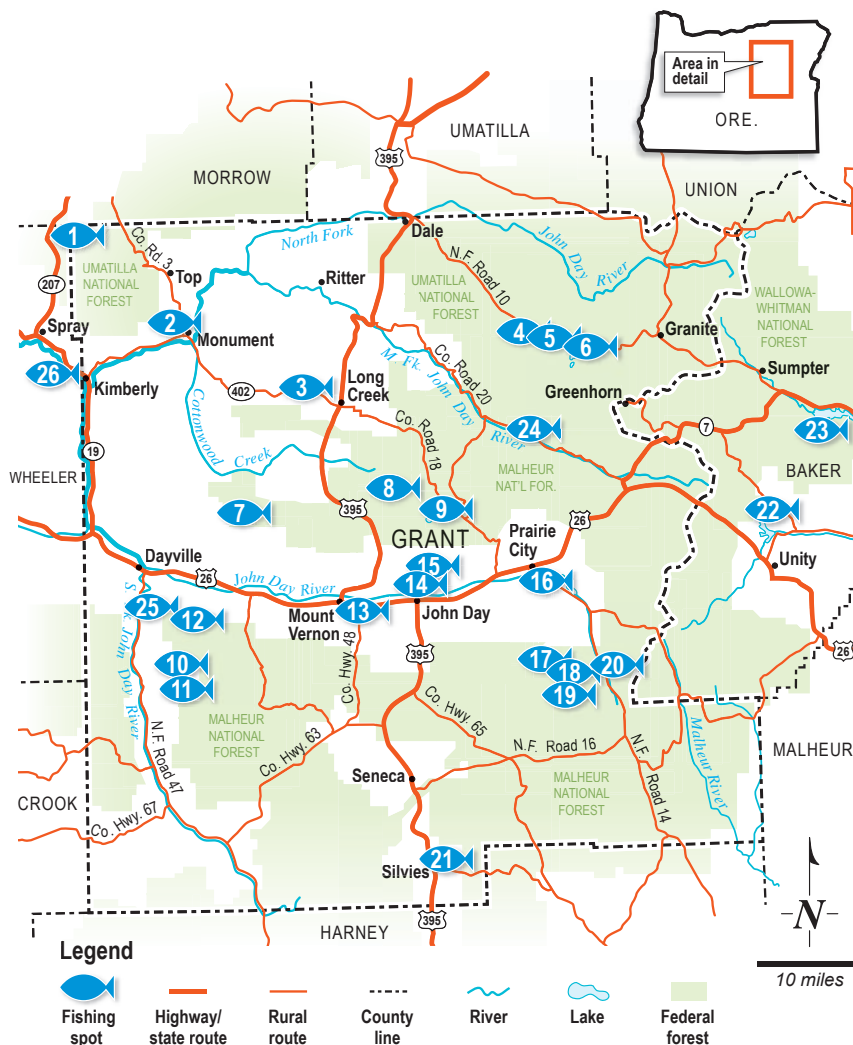
12. Aldrich Ponds — Two ponds, 5 and 8 acres, in Phillip Schneider Wildlife Area, 5 miles east of Dayville. From Hwy. 26 go south on Phillip Schneider Wildlife Area access road 6 miles to lot. Hike-in access only, 2 miles south on trail. Closed Dec. 1-April 14. Rainbow trout.

13. Holliday Park Pond — 3 acres near Holliday State Park, 0.75 miles east of Mt. Vernon on Hwy. 26, turn south on access road, 200 yards to pond. Rainbow trout.

14. Brandon's Pond — 2 acres near ODFW's screen shop facility off Patterson Bridge Road, John Day. Open 6:30 a.m. to 4 p.m. weekdays. Rainbow trout, largemouth bass.

15. Seventh Street Pond — 1 acre at Seventh Street Complex in John Day. Rainbow trout.

16. McHaley Pond — 1 acre on Confederated Tribes



NOTE: Unless specified, all locations open year round. *Closed until Memorial Day Weekend.

For more information on fishing in northeast Oregon, go to: myodfw.com/recreation-report

of the Warm Springs land. Take Hwy. 26 east from Prairie City 0.5 miles, turn south on ranch access road past tree nursery. Rainbow trout.

17. Strawberry Lake — 31 acres in the Strawberry Mt. Wilderness. Take Co. Road 60 south from Prairie City into Malheur Forest, continue on FR 6001 to trailhead. Hike 1.5 miles to lake. Rainbow, brook trout.

18. High Lake — 10 acres in the Strawberry Mt. Wilderness. From Seneca, head east on FR 16 for 13 miles to FR 1640. Go north on 1640 to end and trail head. Hike 1.5 miles to lake. Brook trout.

19. Slide Lake — 13 acres in the Strawberry Mt. Wilderness. Take Co. Road 60 south from Prairie City into Malheur Forest. Continue on FR 6001 to the trail head. Strenuous hike of more than 4 miles to lake. Brook trout.

20. Trout Farm Pond — 2 acres in Malheur Forest. From Prairie City, go south 15 miles on Co. Road 62. Look for Trout Farm sign, then turn west 100 yards. Rainbow, brook trout.

21. Poison Creek Reservoir — 27 acres on BLM land. 17 miles south of Seneca on Hwy. 395, take FR 17 east for 0.5 miles, turn north into reservoir. Rainbow trout, limit 2 trout per day.

22. Unity Reservoir — 926 acres, about 50 miles east of John Day off Hwy. 245 near Unity. Campsites, cabins, hiker/biker camp, ADA-accessible, RV dump station. Trout, bass and crappie.

23. Phillips Reservoir — 1,500 acres, along Hwy. 7 near Sumpter. Three campgrounds and two boat launches. Perch, bass and rainbow trout. Tiger trout and hybrid Muskie, stocked to help control perch, must be released if caught.

***24. Middle Fork John Day River** — 14-mile section from Camp Creek to Caribou Creek. Bank fishing access at Deerhorn, Middle Fork campgrounds. Trout fishing good May-October. Chinook salmon closed to fishing.

***25. South Fork John Day River** — 11-mile section from the first bridge to the mouth of Murderers Creek. Trout fishing good May through October.

26. John Day River — 26-mile section from Kimberly downstream to Service Creek. Steelhead from January through March, smallmouth from May through November. Channel catfish during summer months. Bank access and boat launches at Shady Rest, Spray City and Muleshoe parks.

THINGS TO DO

Walk on the Wildside

Grant County is full of wildlife — from mountain goats to pronghorns, deer and elk, as well as a wide variety of birds. The Grant County Bird Club has compiled a list of over 305 species that can be found in the area.

Bald eagles are common, especially between Mt. Vernon and Dayville, from November to as late as May.

Birders will find an abundance of species, including wood ducks, common mergansers, Vaux's swifts, ospreys, flammulated owls, white-headed woodpeckers, Townsend's warblers and lazuli buntings.

The bird club has compiled a list of "Birding Hot Spots" in the area, including Swick Old Growth Grove south of Canyon City, Trout Farm Campground south of Prairie City and the Seventh Street Sports Complex in John Day. Maps are available at the Grant County Chamber of Commerce, 301 W. Main St., John Day, and the Malheur National Forest office, 431 Patterson Bridge Road, John Day.



PHOTO BY EMMA CARNIGLIA

Hunting

PHOTO BY JINA CARNIGLIA

Hunting opportunities abound in the diverse terrain around the county.

Six big game units are located within Grant County — Northside, West Murderers Creek, East Murderers Creek, Beulah, Desolation and Malheur. Just outside the county are four more units: Sumpter, Heppner, Silvies and Fossil.

For more information, call the Grant County Chamber of Commerce, 541-575-0547

Hunting regulations are available at dfw.state.or.us



Grant County REGIONAL AIRPORT

First-class conference and meeting spaces available. Perfect for any event with 5 to 85 people.

Catering kitchen, AV and courtesy cars.

BUSINESS OFFICES
AVAILABLE FOR LEASE
Contact the airport manager
for more information
541-575-1151

EPIC
FUELS
Automated Weather Observation System
VHF 118.375
Unicom frequency (122.8)

5280959-1

Depot RV Park



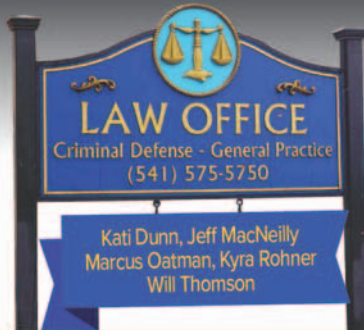
20 Full RV Hookups - 30 amp
Covered Picnic Area
Playground
Tent Sites & Shower Facility
Quiet Setting
Wi-Fi

4 blocks south of Hwy 26 on Main Street
Prairie City • 541-820-3605
cityofprairiecity.com

5274749-1

Strawberry Mountain Law, PC

206 S. Humbolt Street • Canyon City, OR 97820



- Criminal Law
- Family Law
- Wills

5280954-1

GRANT COUNTY FAIR & RV PARK John Day, Oregon



RV PARK

- ◆ River Front
- ◆ Restrooms/Shower
- ◆ Walking Distance to Downtown
- ◆ Walking Trails
- ◆ Pet Friendly

RESERVATIONS www.grantcountyorregon.com

411 NW Bridge | John Day | 541.575.1900

5280955-1

COVID testing and treatments, urgent or same-day appointments, primary care



CANYON
CREEK
Clinic

5281979-1

Call or Text **541-575-1263**

235 S Canyon Blvd.

John Day, Oregon 97845

www.canyoncreekclinic.com

THINGS TO DO

Hit the Links

From the award-winning Retreat and Links at Silvies Valley Ranch to the John Day Golf Club, experienced and novice golfers alike have options to play on some of the best greens in the West.

The Retreat, Links and Spa at Silvies Valley Ranch

Golf Magazine named this gem the No. 3 Family Resort in North America in the publication's Top 100 Resorts issue for 2019-2020.

The Hankins and Craddock golf courses, reversible overlapping 18-hole courses designed by Dan Hixson, and the McVeigh's Gauntlet seven-hole ridge course were recognized respectively by Golf Magazine and Golf Digest as some of the best new courses in the world. Hankins was ranked No. 31 and Craddock No. 42 in Golfweek's 2022 Top Resort Courses in the United States.

On McVeigh's Gauntlet and the nine-hole, par-3 Chief Egan course, guests can play with a goat caddy for a truly unique golfing experience.

New this year are Claire's Courses, a reversible 18-hole putting course, and the Orange and Black Courses, all designed by Hixson.

This five-star resort south of Seneca features luxurious accommodations, top-of-the-line amenities and ranch-raised cuisine. For more information, visit silvies.us or call 1-800-SILVIES.

John Day Golf Club

The John Day Golf Club offers golfers a nine-hole regulation course that is open to both club members and visitors. The diverse terrain, flanked by high-desert hills, a tree-lined fairway and a pond with sturgeon and trout, and two sand bunkers offer a unique challenge for golfers.

Golfers can work on their strokes and their putts year-round at the driving range and putting green, located right outside the clubhouse. Golf carts are available for rent or golfers can bring their own. Select golf clubs are available to rent as well.

The club hosts tournaments and scrambles throughout the year. Visitors are encouraged to participate.

The clubhouse, which includes a full bar and a snack bar, also offers an additional dining room and a full kitchen that can be rented out for various events. For more information, call the John Day Golf Club at 541-575-0170.



551 W. Main, John Day • 541.575.1346

Wherever you travel in
GRANT COUNTY,
Les Schwab is there!

Tires • Wheels • Brakes • Batteries • Alignment • Suspension • Sudden Service

5279684-1



THINGS TO DO

Museums

DeWitt Museum at Depot Park

- **Where:** Bridge and Main streets, Prairie City
- **Dates:** May 15 to Oct. 15
- **Hours:** 10 a.m. to 5 p.m., Wednesdays through Sundays
- **Admission:** \$3 per person
- **Phone:** 541-820-3330

In addition to mining and lumber roots, Grant County was also once home to a thriving railroad. This slice of railroad history — and much more — is preserved at the DeWitt Museum, located in the heart of Prairie City.

Built in 1910, the two-story museum was a depot for the Sumpter Valley Railway. It was the only two-story depot along the railway line and the only one that's still on its original site.

The narrow-gauge line, which began rolling in 1890, ran from Baker City to Sumpter, and later to Prairie City. The passenger station, or Prairie City Depot, was the railway's terminus.

In the depot's heyday, a waiting area, baggage, freight and express rooms and the station agent's office were all on the ground floor. The agent's living quarters were on the second floor.

Railway service to Prairie City ended in 1933, although some passenger trains continued for a few more years.

Slated for demolition, the historic building was rescued thanks to the efforts of a local group of women. In 1976, it was listed on the National Register of Historic Places, though it remained unused until the mid-1980s, when it found new life as a community museum.

The DeWitt's artifacts were originally from the collection of local pioneers T. Gail and Peacha DeWitt, who ran a sawmill, dredge and ranch on the Middle Fork of the John Day River. Family artifacts were kept in several locations before finding a permanent home in the depot building in 1984.

Over the past 30-plus years, the collection has ballooned as more items were added. Visitors to the DeWitt will find a wide assortment of railroad memorabilia, mining and ranching tools, rocks and minerals, vintage household items, photos of local families and the town, books and much more. Each section and room of the two-story museum features a facet of local history.

Grant County Ranch and Rodeo Museum

- **Where:** 241 E. Main St., John Day
- **Dates:** May 1 to Sept. 30
- **Hours:** 10 a.m. to 4 p.m., Thursdays through Saturdays, and group tours by appointment
- **Admission:** Adults, \$3; children under 12, free
- **Phone:** 541-575-0052 or 541-575-0747

Perhaps the truest image of Grant County is that of the cowboy and ranching way of life. One sure place where visitors will find a thorough collection of that wild and colorful legacy is at the Grant County Ranch and Rodeo Museum.

The museum is dedicated to celebrating the cowboy way of life in Grant County, and honoring past, present and future local cowboys and cowgirls.

Several rooms showcase exhibits that are divided by category such as ranch, rodeo and Western arts and crafts. Displays include rodeo champion belt buckles, branding irons, cowboy poetry, knife collections, historical barbed wires, Grant County Fair and Rodeo court costumes, trophy saddles of National Intercollegiate Rodeo Association champions as far back as 1959, photographs of Grant County cattle drives, documents, books and much more. Most of the artifacts and memorabilia have been donated.

A gala celebration marked the museum's opening on July 23, 2005. The following summer, four colorful paintings depicting ranch and rodeo scenes, the work of Mt. Vernon artist Patricia Ross, were installed on the exterior of the building.

Grant County Historical Museum

- **Where:** 101 S. Canyon Blvd., Canyon City
- **Dates:** May 1 to Sept. 30
- **Hours:** 9 a.m. to 4:30 p.m., Tuesdays through Saturdays
- **Admission:** Adults, \$4; seniors and veterans, \$3.50; children, \$2; ages 6 and under, free
- **Phone:** 541-575-0362
- **Web:** grantcountymuseum.org

It's appropriate that the Grant County Historical Museum is located in Canyon City, since that's where the county's existence was born. The discovery of gold in 1862 on the banks of nearby Whiskey Gulch attracted thousands to this area, which wasn't even a county yet, and was home to a few Native American tribes and traveling exploration parties and trappers.

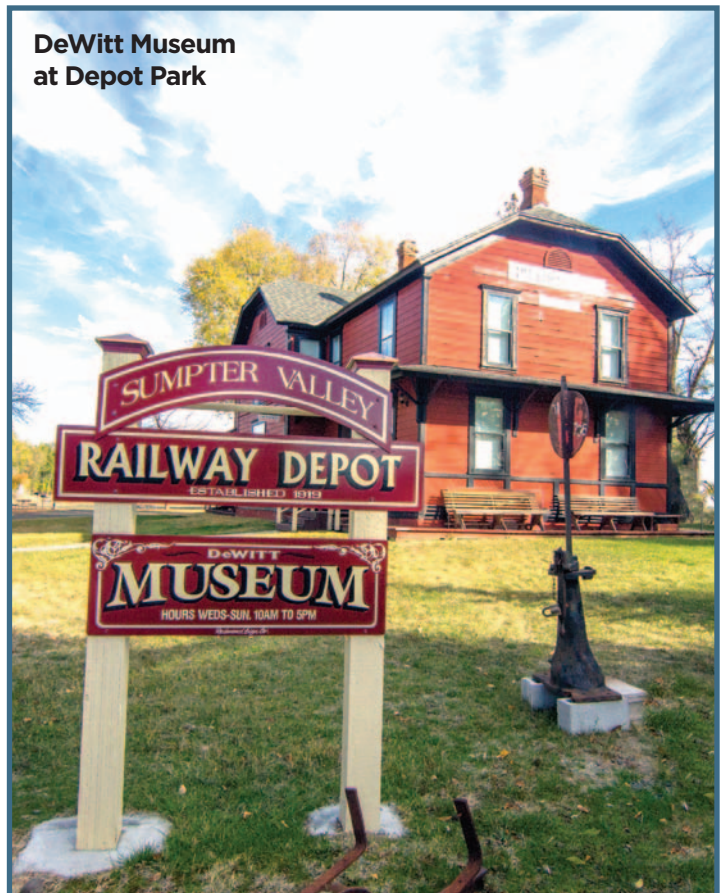
The first items in the collection were gathered by early-1900s Canyon City resident Charley Brown, who was a postmaster and ran a general store and a gas station. In 1925, Brown bought an old saddle from someone, and soon — as the story goes — a deluge of local folks began beating a path to Brown, eager to sell relics from their homes. Soon, his small gas station on Washington Street overflowed.

Brown later sold the amassed goods to the Grant County Historical Society, and in 1953, local rancher Herman Oliver purchased a building for the present-day museum to house the growing collection.

The spacious building is a one-stop comprehensive source for Grant County history, primarily the Canyon City and John Day areas. Visitors will be transported back in time to Grant County days gone by among vivid exhibits showcasing not only the area's rich gold mining days, but Native American artifacts, day-to-day early pioneer life, business endeavors, Chinese influence in Eastern Oregon, ranching and lumber industries, rock collections and much more. There are also files of newspaper clippings, letters, documents, books, ledgers and an extensive catalog of vintage photographs. Even local residents are bound to learn something new upon a visit to this Grant County gem.

Next to the museum, visitors will also want to check out the jail from the onetime mining town of Greenhorn and the Joaquin Miller cabin. Miller, known as the "Poet of the Sierras," was a colorful character who held a lengthy list of titles including Grant County judge at age 29. The cabin was where he wrote and lived in Canyon City from 1864-1870.

**DeWitt Museum
at Depot Park**



John Day Fossil Beds National Monument

- **Where:** 32651 Highway 19, 8 miles west of Dayville
- **Dates:** Year-round
- **Hours:** Winter, 10 a.m. to 5 p.m.; summer, 9 a.m. to 5 p.m., daily except federal holidays between Thanksgiving and President's Day
- **Admission:** Free
- **Phone:** 541-987-2333
- **Web:** nps.gov/joda

The John Day Fossil Beds National Monument is dedicated to the preservation and continuing research of the fossil plants and mammals that existed here millions of years ago. The monument is comprised of three geographically unique units: Clarno and Painted Hills in Wheeler County, and Sheep Rock in Grant County, which together cover nearly 14,000 acres.

Sheep Rock is home to the Thomas Condon Paleontology Center, the Historic Cant Ranch and seven hiking trails.

The Paleontology Center, which opened in 2005, is named for 19th-century missionary and scientist Thomas Condon. Born in Ireland, Condon immigrated to New York and later traveled with his wife to Oregon, where he was known for his interest and expertise in geology. In 1865, while venturing across the state, he was the first to identify the scientific significance of the area that is now the John Day Fossil Beds.

The expansive 11,000-square-foot Paleontology Center is a state-of-the-art research facility where new discoveries continue to be made well into the 21st century. Visitors can peruse a vast array of fossils, exhibits, displays and information, and even watch scientists at work in the laboratory.

Across Highway 19 from the Paleontology Center is the Historic Cant Ranch and Museum, which was a working sheep ranch in the early 20th century.

The ranch house and museum are open only in summer, although visitors are welcome to tour outside areas and trails at any time.

Outdoor enthusiasts will also enjoy seven trails within the Sheep Rock Unit, ranging in length from ¼ mile to ¾ miles. Each offers its own breathtaking vistas, rock formations and colorful geologic layers. All are open year-round. Information and maps are available at the Paleontology Center.

Visitors to the John Day Fossil Beds are reminded that all fossils, rocks, plants and animals are fragile and protected, and may not be collected or disturbed. Anyone who sees a fossil is urged to take a photo of it and report it to a ranger.

Kam Wah Chung State Heritage Site

- **Where:** 125 NW Canton St., John Day
- **Dates:** May 1 to Oct. 31
- **Hours:** 9 a.m. to noon and 1-5 p.m., daily
- **Admission:** Free
- **Phone:** 541-575-2800
- **Web:** friendsofkamwahchung.com

Chinese immigrants were instrumental in the history of Grant County and Eastern Oregon, and nowhere is their influence more thoroughly preserved and honored than at the Kam Wah Chung State Heritage Site in John Day.

Loosely translated as "Golden Flower of Prosperity," the Kam Wah Chung site includes an interpretive center on Northwest Canton Street and a museum on nearby Ing Hay Way. The latter, built in 1876 as a trading post, was the longtime location of a successful business venture for two Chinese immigrants, herbal doctor Ing "Doc" Hay and businessman Lung On.

For 60 years, from 1888 to 1948, the enterprising pair ran a general store, practiced Chinese herbal medicine and performed religious rituals. Chinese miners, local residents and pioneers all benefited from Doc Hay's treatments. The business also served as a vital social center for Chinese immigrants throughout Eastern Oregon.

After Hay's death in 1952, the building was abandoned until 1967, when the city of John Day launched plans to restore it to its 1940s condition and turn it into a museum, per Hay's request. Thanks to the hard work of Oregon State Parks and The Friends of Kam Wah Chung, visitors entering the museum today are treated to a step back in time to the bustling business days of Doc Hay and Lung On, almost exactly as they left it.

In 1973, the museum was listed on the National Register of Historic Places, and in 2005, it was designated a National Historic Landmark.

The interpretive center features videos and informational exhibits, unveiled in 2011, outlining Chinese influence in Eastern Oregon. A few years prior, the museum underwent nearly a year of renovations and repairs, which were unveiled at lavish ceremony in 2008.

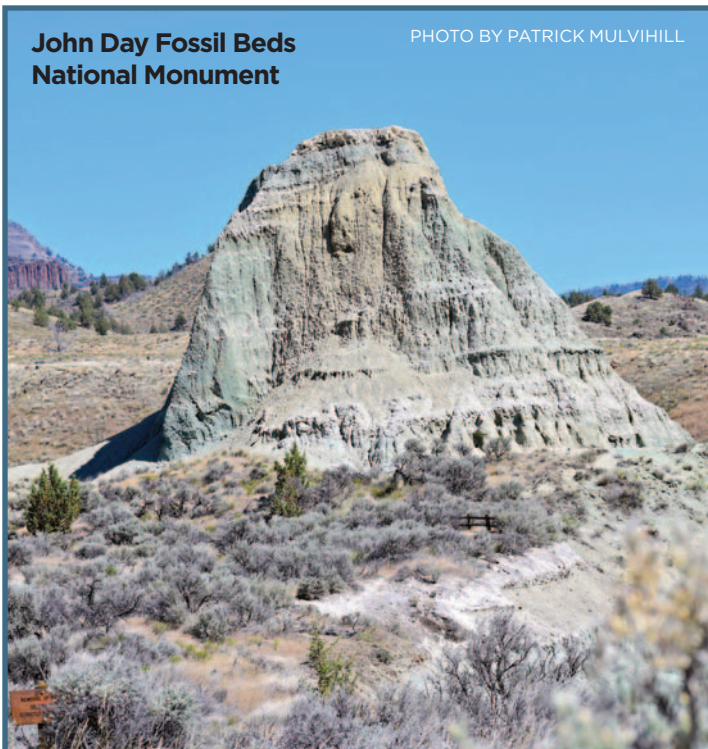
The museum is open to guided tours only, at the top of each hour, until 4 p.m. Tours are about 45 minutes long.

The site is slated for a major expansion in the next few years.

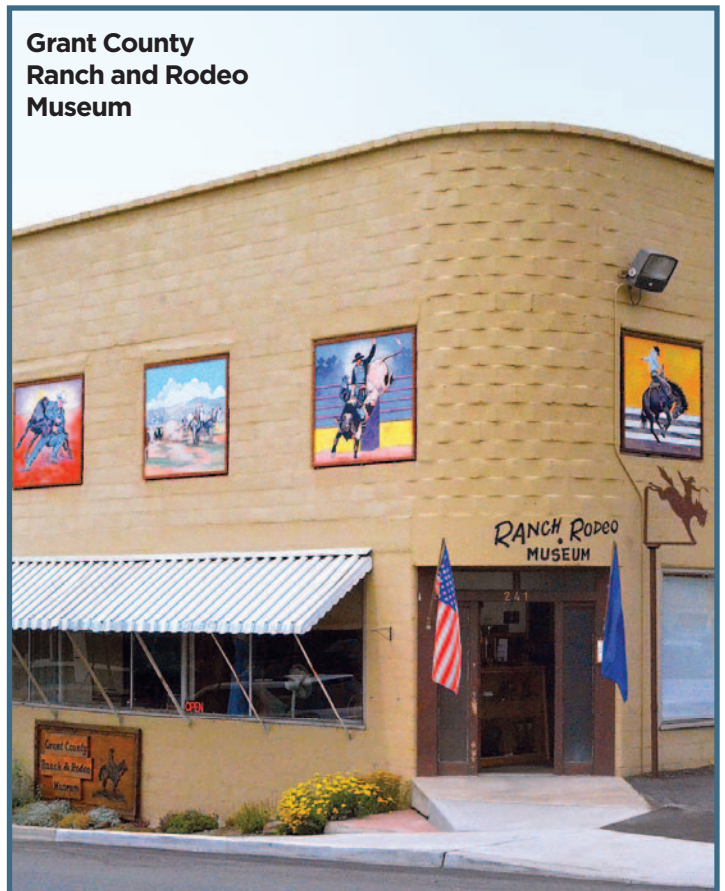
Free tickets are available at the interpretive center.

John Day Fossil Beds National Monument

PHOTO BY PATRICK MULVIHILL



Grant County Ranch and Rodeo Museum





Gear Up for Adventure

Paddle your way into an adventure with our outstanding paddle board rentals!

JD Outdoor & Power Equipment

727 West Main Street
John Day, OR 97845
541-575-1156
1-800-895-1788

S172243-1

OK Garage and Mini Mart
151 Hwy 395 N. ~ Long Creek, Oregon
Mini Mart: Food, Drinks & Spirit
Fuel: Diesel, E-10 Regular, NonEthanol Supreme & Propane



541-421-3344

Full Service Automotive Maintenance & Repair

S171590-1

Boyer's Cash Store - Monument



Serving Grant County since 1927

Stock up on everything you need during a road trip, or an outing on the river.

• Groceries • Snacks • Gas • Diesel

S171582-1

Robbins Equipment

BAKER CITY (541) 523-6377
BURNS (541) 573-6377
LA GRANDE (541) 963-6577
CHRISTMAS VALLEY (541) 576-2160
www.robbsfarmeq.com



S165550-1

Love at First Sip



Log Cabin Espresso
John Day Polaris • 821 W. Hwy, John Day
541-575-5778

S173763-1

Family-Owned
JOHN DAY RIVER TRADING POST



• Groceries • ODFW License & Tags
 • Fishing Gear • Non-Ethanol Fuel
 • Boat & Paddle Board Rentals

8am-6pm Mon.-Sat., Sun. 10am-4pm
 41345 Hwy. 19, Kimberly, OR • (541) 934-2060

S173763-1

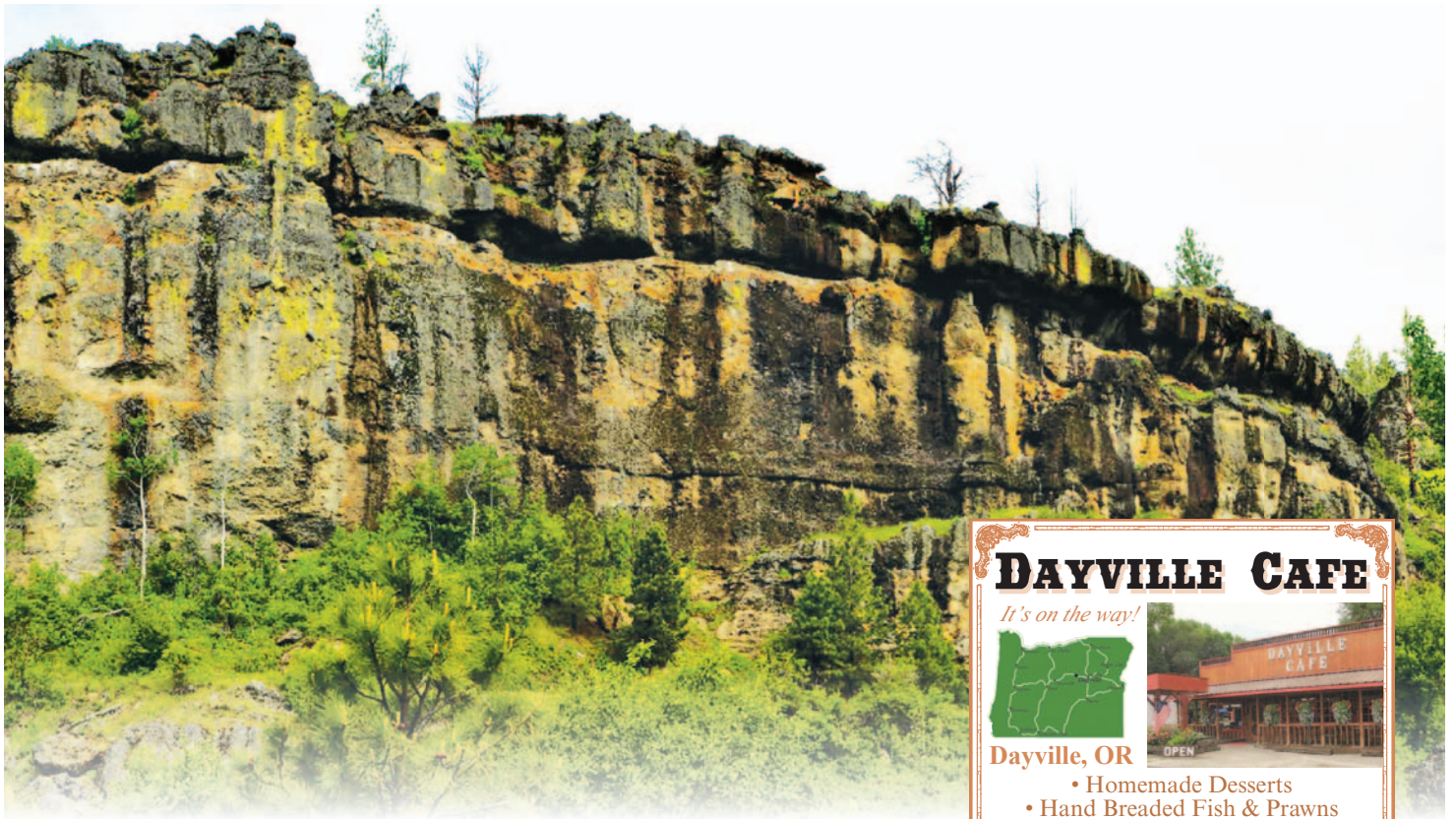
"The Best Antiques Are Old Friends"

The Dark Horse Rentals LLC
Antiques and Gifts

80 Vendors
 600 S. Canyon Blvd.,
 John Day, OR
541-620-5808



S278520-1



DAYVILLE CAFE
It's on the way!




Dayville, OR

- Homemade Desserts
- Hand Breaded Fish & Prawns
- Fresh Painted Hills Beef
- Hard Ice Cream Milkshakes

212 W Franklin Avenue • 541-987-2122
 Wed.-Sat. 11 am - 8 pm, Sun. 11 am - 7 pm

EAGLE CAP EXCURSION TRAIN



Beside the Grande Ronde and Wallowa Rivers
 Schedule and tickets online.
 541.437.3652 Elgin, Oregon

eaglecaptrainrides.com

FRESH FINDS
 2022



• GRANT COUNTY FARMERS MARKET •
 JUNE 18-OCTOBER 15
 9:00AM - 1:00PM



a unique boutique
 featuring local artisans from Grant County



133 W. Main, John Day, OR
 (541) 620-2638

etc facebook: [etc.auniqueboutique](https://www.facebook.com/etc.auniqueboutique)
 email: etc.handmade@yahoo.com

5173874-1

Burnt River MARKET & MOTEL

Welcome Travelers!

Cafe with full menu
 Breakfast, Lunch & Dinner
 Served Daily!
 Groceries • Snacks • Non-ethanol fuel & more

304 Main St., Unity • 541-446-3660
 Mon - Sat 7am -7pm • Sun 8am -6pm

Heritage Hill Farm
 Floral and Gifts

Mon-Fri 10am-6pm / Sat by Appt.
 Call/Text: 541-620-1558
www.heritagehillfarmflowers.com
 Located at 28658 Indian Creek Rd
 between Prairie City and John Day

Come Play with us!



GRANT COUNTY Snowballers

• John Day Country • 500 Miles of Groomed Trails!

grantcountysnowballers.com

Contact Tim Holly: 541-620-0408 or
 Garrett Carniglia: 541-792-1014 or
 Tim Nodine: 541-792-0677

5171591-1

5278525-1



PHOTO BY THOMAS WINTERS

THINGS TO DO

Flip a Disc

With courses in John Day and Bear Valley open year-round, Grant County offers Frisbee golf (also known as “frolf”) for novice and seasoned players alike.

Rattlesnake Ridge

John Day's nine-hole disc golf course, dubbed Rattlesnake Ridge, is conveniently located at the Seventh Street Sports Complex, just a few blocks from Main Street in downtown John Day. The course has tee signs with QR codes that allow frolfers to scan with their cellphones to direct them to a course map on Google Earth and a brief course description. The John Day-Canyon City Parks and Rec office has discs available at no charge. Those looking to borrow a set of discs can make arrangements by calling the Parks and Rec office at 541-575-0110 or emailing jccparksandrec.rc@gmail.com

Long Glade

Those looking for a more rugged disc golf adventure can try out one of three courses at Long Glade Golf Course in Bear Valley. Each course offers 18 holes with tee signs and tee boxes. Depending on conditions, there are campsites available free of charge with prior permission from the landowner. For more information, contact owner Tom Winters at 541-542-2006 or email tjwinters1951@gmail.com. To get to the course from John Day, head south on Highway 395 and turn west on Izee-Paulina Lane, about 17 miles south of Canyon City. Go 3 1/2 miles and turn right on Geary Creek Road. Go 3/4 mile and turn left on Spring Road. The entrance is about 1/4 mile farther on, with a cattle guard, green gate and totem poles.



Madden Realty

116 NW Bridge Street Suite 11, John Day, OR 97845
www.maddenrealtyeasternoregon.com



Your Hometown
Realtors

541-575-0990

Licensed in the State of Oregon



Lindsey
Madden
Principal Broker
541-792-0031

Lmadden88@outlook.com

Michal
Madden
Principal Broker
541-620-4408

Michal.madden@yahoo.com

De Ann
Sandor
Broker
360-690-5233

deannsandor@gmail.com

Joshua
Nightingale
Broker
971-599-0013

realtornightingale@gmail.com

S276954-1

Keep your Home in Good Hands
WITH GRANT COUNTRY'S FINEST CONTRACTORS

GRANT COUNTY

HEATING & COOLING LLC

Business Hours:
Monday-Friday, 8:00 am-5:00 pm

SERVICES WE OFFER

- Heating
- Air Conditioning
- Mini Splits
- Tankless Water Heaters
- Fireplaces & Stoves

- Geothermal
- Sales
- Service
- Installation
- Repair

Contact us today at 541-620-7246
to schedule service or a free estimate on new equipment!









RESIDENTIAL & COMMERCIAL

- New Construction
- Remodeling
- Additions
- Siding & Windows
- Roofing
- Sun/Patio Rooms
- Garages & Sheds
- Porches & Decks
- Basements
- Cabinets
- Attic Conversions
- Doors
- & Much More

MILLS BUILDING SUPPLY

751 W. Main, John Day • 541.575.1021

5172748-1

Patriot Plumbing
and Gear

245 N. Canyon City Blvd.
Canyon City
541-575-2144
Open Monday-Friday
8PM - 4:30PM
After Hours by Appointment

Official Grant County Visitor Guide 2022 ■ MyEagleNews.com ■ 51



**Here's the deal.
I'll be there
for you.**

Jeanette Radinovich, Agent
101 W Main Street
John Day, OR 97845
Bus: 541-575-2073
jeanetteradinovich.com

The future has a lot of what ifs, and it's a good feeling to have someone in your corner and around the corner to help you plan for them. Call me today.

Like a good neighbor,
State Farm is there.®

State Farm
Bloomington, IL
2001293



5284603-1

DALE STORE 48388 Hwy. 395 N. Dale, OR
541-421-3484

**RIVER SHUTTLES
AVAILABLE**

GAS • PROPANE & GROCERIES Friendly Service
5275511-1

Thomas Orchards
Juiciest, Most Flavorable Fruit
Kimberly, Oregon
541-934-2870

"Fruit in Season"
Cherries • Apricots • Peaches • Nectarines • Plums • Pears • Apples

ThomasOrchards@hotmail.com • Join us on Facebook
5282870-1 Dale Daby

Private, confidential support... when you need it

Emergency and on-going support for survivors of domestic and dating trauma, sexual assault and stalking; a place to enable healing and live a life free from violence.



DOMESTIC TRAUMA SERVICE CENTER

Call or Text **541-620-1342** 24 Hours

OFFICE 541-575-4335 - JOHN DAY

5284406-1

Kam Wah Chung
museum & interpretive center

Open during the
2022 Season
May 1 - October 31

Check out our
website for a
Virtual Reality Tour

**125 NW Canton
John Day, OR
541-575-2800**

FriendsOfKamWahChung.com

5282646-1

Grant County Census Data:

Population

Population estimate
(July 2021): 7,226

Under 5: 4.7%

Under 18: 17.6%

Over 64: 31.4%

Female: 49.7%

Veterans: 744

Housing

Housing units
(July 2019): 4,451

Owner-occupied housing unit
rate: 71.1%

Median value of owner-
occupied housing units:
\$144,800

Median selected monthly owner
costs with mortgage: \$1,003

Median selected monthly owner
costs without mortgage: \$423

Median gross rent: \$704

Living Arrangements

Households (2015-2019): 3,381

Persons per household: 2.07

Living in same house one year
ago: 88.8%

Education

High school graduate or higher
for people over 24 (2015-2019):
88.8%

Bachelor's degree or higher
for people over 24: 18.9%

Income

Median household income
(in 2018 dollars): \$44,712

Per capita income in past 12
months: \$27,367

Businesses

Total employer establishments
(2019): 219

All firms (2012): 595

Geography

Land in square miles: 4,528.54

Population per square mile: 1.6

Mean travel time to work: 15.1
minutes

COMMUNITIES

Facts & Contacts

EMERGENCY

Dial 911

**Grant County Emergency Communication
Agency** (dispatch)

541-575-0195, 316 S. Canyon Blvd., John Day

Grant County Sheriff's Office

541-575-1131, 205 S. Humbolt St., Canyon City

Grant County Emergency Management

541-575-0059, 530 E. Main St., John Day

Grant County Health Department

541-575-0429

528 E. Main St., Ste. E, John Day

Blue Mountain Hospital

541-575-1311, 170 Ford Road, John Day

GOVERNMENT

Grant County

541-575-0059

201 S. Humbolt St., Canyon City

Canyon City

541-575-0509

123 S. Washington St., Canyon City

Dayville

541-987-2188, 3 Park Lane, Dayville

Granite

541-755-5100, 1378 Main St., Granite

John Day

541-575-0028, 450 E. Main St., John Day

Long Creek

541-421-3601, 250 Hardisty St., Long Creek

Monument

541-934-2025, 291 Main St., Monument

Mt. Vernon

541-932-4688, 250 W. Main St., Mt. Vernon

Prairie City

541-820-3605, 133 S. Bridge St., Prairie City

Seneca

541-542-2161, 106 A Ave., Seneca

U.S. Forest Service

541-575-3000

431 Patterson Bridge Road, John Day

Oregon Department of Forestry

541-575-1139

415 Patterson Bridge Road, John Day

BUSINESS

Grant County Chamber of Commerce

541-575-0547, 301 W. Main St., John Day

Grant County Economic Development

541-575-1555

530 E. Main St., Ste. 4, John Day

GRANT COUNTY INDUSTRIAL PARK

Features 1-acre parcels as well as some larger lots available for purchase or lease. The park is an enterprise zone, which offers the option of temporary property tax exemption for eligible businesses. The park is zoned for commercial/industrial development. Single-phase 120/240V and three-phase 480V is available to all commercial/industrial park sites. The site is adjacent to the Grant County Regional Airport.

AIRPORT

Grant County Regional Airport

541-575-1151, 72000 Airport Road, John Day

The Grant County Regional Airport terminal features a third-story observation deck, conference rooms with the latest technology and kitchen facilities. The airport offers Jet A and Avgas refueling, private hangars, two courtesy cars and a pilot lounge. A GPS instrument approach system and automated weather observation system (AWOS III) offer pilots safe and convenient access.

UTILITIES

Oregon Trail Electric Cooperative

541-575-0161

400 Patterson Bridge Road, John Day

Columbia Power Cooperative

541-934-2311, 311 Wilson St., Monument

Oregon Telephone Corporation

541-932-4411, 1 Telephone Drive, Mt. Vernon

CenturyLink

888-723-8010

Viasat

888-593-1030

HughesNet

844-961-2404

DirectTV

833-390-2202

Dish Network

833-750-2632

EDUCATION

Grant County Library

541-575-1992, 507 S. Canyon Blvd., John Day

Grant County Education Service District

541-575-1349, 835 S. Canyon Blvd., John Day

Dayville School District 16J

541-987-2412

285 School House Road, Dayville

Grant School District 3

541-575-1280

401 N. Canyon City Blvd., Canyon City

Long Creek School District 17

541-421-3896, 375 E. Main St., Long Creek

Monument School District 8

541-934-2646, 127 North St., Monument

Prairie City School District 4

541-820-3314, 740 Overholt St., Prairie City

COMMUNITIES

Dayville

Elevation: 2,369 • Population: 134

On the west end of the John Day Valley, Dayville is rich in “Old West” atmosphere and small town charm. The town has a variety of amenities, including food and fuel, and the historic Dayville Community Hall is undergoing a major renovation. The city park along the John Day River features a large grassy area, horseshoe pits, tennis courts, picnic areas, a playground and a well-kept restroom. Moreover, the area is surrounded by stunning scenery. The Mascall Overlook about 4.5 miles west of Dayville offers 360-degree views of the colorful hillsides and is wheelchair-accessible. Farther west is Picture Gorge, named for the Native American pictographs that adorn the steep canyon walls. Beyond is the John Day Fossil Beds National Monument. Dayville is situated at the intersection of the Northside, Murderers Creek and Ochoco hunting units, and the area is rich in hunting, hiking, camping and fishing options.

Explore Dayville:

South Fork Road south of Dayville follows the South Fork John Day River to the South Fork Falls. The road turns to gravel, but the well-graded route offers a variety of scenic vistas of the river and rock formations in the canyon. Past the Black Canyon Trailhead, which leads into the Black Canyon Wilderness, South Fork Road meets Forest Road 24 near a bridge across the river. The falls are upstream from the bridge but may not be visible from the road. If you're in the area in October, you won't want to miss the Dayville Scarecrow Contest.

John Day

Elevation: 3,087 • Population: 1,664

With the only stoplight in Grant County, John Day is the “big city.” Centrally located at the intersection of highways 26 and 395, the town has facilities serving the surrounding areas, including a hospital and the county's fairgrounds, airport, industrial park, chamber of commerce and library, as well as a grocery store, pharmacy, restaurants, pubs and other businesses. John Day is home to the Kam Wah Chung State Heritage Site, a carefully preserved relic of the area's 19th century mining boom. Built in 1865, the building housed a Chinese apothecary and general store and now serves as a museum. The Oregon Parks and Recreation Department has purchased the adjacent city park property and is planning a new interpretive center on the site. A few blocks away on Main Street, you'll find the Ranch and Rodeo Museum, which celebrates the cowboy way of life in Grant County. The Seventh Street Sports Complex on the north side of town offers a variety of recreational opportunities. Just west of town, the John Day Golf Course invites guests to play nine holes and enjoy the stunning views overlooking the course from a large banquet room in the clubhouse. The new Davis Creek Park offers hiking trails and views, and a network of pedestrian and bicycle paths is taking shape along the John Day River in the heart of town. Photo below.

Explore John Day:

The Seventh Street Sports Complex features baseball and softball fields, tennis and basketball courts, a skate park, a fishing pond, picnic areas, a playground and a paved mile-long trail that circles the property. It features a newly constructed 6,800-square-foot kiddie park with two playground areas for different ages, as well as an 87-by-37-foot splash pad with a variety of water features. The John Day Bike Park has single-track trails winding back and forth across the hill overlooking the complex, as well as slope-style jumps and a skills course with its own pump track. To visit the complex, take Northwest Bridge Street north from Highway 395 and turn right on Seventh Street.



COMMUNITIES

Monument

Elevation: 2,000 • Population: 115

Tucked away in the northwest corner of Grant County, Monument is surrounded by beautiful scenery. Established near the North Fork of the John Day River, the area is rich in fertile ground and a variety of activities, including fishing, hunting, hiking, rafting and photography. Red, rocky outcroppings and Sunken Mountain are southeast of town, and Thomas Cavender Reservoir just west of town and Monument River Park to the south provide opportunities for water-based recreation. Meals are served weekly at the senior center, which also hosts community events, and businesses offer food and fuel. A large, shaded park in town features a playground, basketball and tennis courts, horseshoe pits and covered picnic areas. The town is known for its annual Fourth of July Fun Festival, including a small parade, activities throughout the day and a large fireworks display over the John Day River at dusk.

Explore Monument:

When the water levels are right in late spring and early summer, after the initial spring flooding has subsided, the North Fork John Day River provides a scenic rafting and fishing experience. Designated as a National Wild and Scenic River, the North Fork features an abundance of wildlife, and interesting rock formations jut out along the river. Rafters can put in near Dale and take out at Monument River Park for a several-day trip or take a shorter float from Monument to Kimberly or Spray. And check out the Buckaroo Festival & Harvest Auction in September.

Mt. Vernon

Elevation: 2,695 • Population: 548

For a small community, Mt. Vernon is home to a variety of amenities. Phil Boyd Park features basketball and tennis courts, restrooms and a covered picnic area, and the city has installed new playground equipment. A spacious community center and the Mt. Vernon Grange host annual events and functions, and Clyde Holliday State Park is only a short drive away. Local government recently moved into a new City Hall and plans to convert the old building into a museum. Mt. Vernon was named after a resident's treasured racehorse, said to have lost only one race in his life, and a small stone fort used to protect him from being stolen still stands about 2 miles east of town.

Explore Mt. Vernon:

Just a mile east of Mt. Vernon, Clyde Holliday State Park features a peaceful walking trail along the scenic John Day River. The free day-use area is a popular wayside for motorists, with spacious grassy areas, picnic tables and benches near the river. For a fee, the campground offers overnight accommodations for tents and trailers, and travelers can even stay in one of the two teepees at the park, pending availability. An ADA-accessible pond stocked with trout at the west end of the site provides further recreational opportunities.





Wherever you travel in
GRANT COUNTY,
Les Schwab is there!

551 W. Main, John Day • 541.575.1346

Tires • Wheels • Brakes • Batteries • Alignment • Suspension • Sudden Service

5279679-1

Places to Stay

Victorian Lane B&B JOHN DAY, OREGON



Read our Online Reviews

Experience Country Elegance in our
Top Rated **Bed and Breakfast**
541-286-5548 | victorianlanebnb.com

Fly or Drive In to Lands Inn

Queen beds with full bath and shower. Five solar-powered
cabins. Off-grid camping. Five miles off Highway 19.



541-934-2333 • landsinn.net



LAKE CREEK CAMP

WEDDINGS, REUNIONS, RETREAT

Cabin rentals, tent and dry camp
A la cart meals



Open Daily
for Showers
and Ice

Located
in the
Malheur
National
Forest
Logan
Valley in
Eastern
Oregon

lakecreekcamp.org lakecreekcamp@yahoo.com

50,000 Lake Creek Road Seneca, OR

S172202-1

Southfork RV Park



Open 8 a.m. to 8 p.m. • 7 days a week

• Tent and RV spaces, electric only. • 7 RV sites with
electric hookup. • Spot to fill with fresh city water. • Dump
station to dump holding tanks. • Showers and restrooms.

5 Park Lane, Dayville, OR 97825

S172201-1

Seneca Timbers Inn & RV Park



Timbers Inn & RV is located in the heart of four of the
best hunting units: North Malheur, East Murderer's
Creek, West Murderer's Creek, and Silvies.
The Inn offers three rustic cabins for your stay or 12
full service RV hook-ups.

To make reservations **Call 541-620-2551**
306 Barnes Ave. Seneca, Oregon

S172199-1

Dixie Creek Bungalows

Vacation Rentals

Not so Tiny - Tiny Homes

Downtown Prairie City, OR

Each sleeps 4, Nightly bookings,

Extended Stay, Pet friendly

Available on AIRBNB.COM

or call 541-604-8740

S171862-1

S278524-1

Places to Stay



Paul & Leslie Barnett, Lineah Barnett
171 W. Main, Long Creek, OR ~ N. HWY 395
541.421.9212 • longcreeklodge@aol.com

Located on HWY 395 South, in the foothills of the Southern Blue Mountains | Bicycle friendly ~ Old West Scenic Bikeway | Seven rooms with Satellite TV & WiFi | Light Continental Breakfast



Daily & Weekly Rates

Budget 8 Motel

711 W Main St, John Day, OR 97845
(541) 575-2155



John Day Motel

2-Star Motel

250 E Main St, John Day, OR 97845
(541) 575-9000

WELCOME TO PRAIRIE CITY

Prairie City FIBER FEST

July 30 & 31, 2022

- Workshops (Start July 29)
- Vendors
- Fleeces

Prairie City in Eastern Oregon

for up-to-date information visit:

www.PrairieCityFiberFest.com



The Gateway to the Strawberry Mountains

Tanni Wenger
TANNI WENGER PHOTOGRAPHY

WESTERN CLOTHING

**Boots • Hats • Gifts
for the whole family**

Wrangler



CINCH
JEANS & SHIRTS

carhartt



MONTANA
SILVER SUTTERS

BAR WB



**Front St.,
Prairie City
541-820-3675**

Squeeze V's

DBA
Chuck's
Little
Diner

**OPEN FOR
BREAKFAST
AND LUNCH**



142 W FRONT ST., PRAIRIE CITY • 541-820-4353

5281726-1

COMMUNITIES

Prairie City

Elevation: 3,535 • Population: 841

With spectacular views of Strawberry Mountain, Prairie City provides easy access to year-round outdoor recreation. From the Blue Mountains to the Strawberry Mountain Wilderness, the area is surrounded with opportunities for fishing, hiking, biking, hunting, skiing, snowmobiling and camping. Businesses provide a small town “Main Street” atmosphere downtown, and the Prairie City Community Center provides a place to gather. The town has two parks: The city park in the center of town features a playground and picnic area near City Hall, and Depot Park at Bridge and Main streets is home to Depot RV Park and the DeWitt Museum, which houses a collection of local railroad memorabilia as well as other items in the historic Sumpter Valley Railway Depot.



Explore Prairie City:

Strawberry Lake is a pristine mountain oasis in the Strawberry Mountain Wilderness. Strawberry Campground is as far as vehicles can travel, and the rest of the trek is on foot. The moderately difficult trail travels about a mile from the campground uphill to the lake. Strawberry Falls is about another mile up the trail, which is connected to a trail system that traverses the wilderness. The campground is about 11 miles south of Prairie City on County Road 60.

PHOTO BY HANNAH BRANDSMA



551 W. Main, John Day • 541.575.1346

Wherever you travel in
GRANT COUNTY,
Les Schwab is there!

Tires • Wheels • Brakes • Batteries • Alignment • Suspension • Sudden Service

S279648-1



**Grant County Veterans Office
is here to serve and help
all veterans.**

★★★★★

***Grant County Veteran's Services
530 E Main St. Suite #5
John Day, OR 97845
541-620-8057***

★★★★★



We Keep You on the

ROAD



Complete Auto Body & Paint
Windshield Repair & Replacement

Owner
Jeb Bowling

700 S. Canyon Blvd., John Day
541-575-1786

FRONTIER EQUIPMENT REPAIR
Full Auto Repairs • 541-932-4777
24-HR TOWING

www.frontierrepairandrental.com
* Oregon State Police & Motor Club approved

The advertisement features a red tow truck with "FRONTIER TOWING" and "541-932-4777" on its side. Two people are standing in front of the truck. The background shows a building with various signs.

551 W. Main, John Day • 541.575.1346

Wherever you travel in
GRANT COUNTY,
Les Schwab is there!

Tires • Wheels • Brakes • Batteries • Alignment • Suspension • Sudden Service

5279684-1

COMMUNITIES

Canyon City

Elevation: 3,173 • Population: 666

When gold was discovered here in 1862, Canyon City quickly sprang up as a booming mining town with about 10,000 residents – at the time, it had more inhabitants than Portland, Oregon's current largest city. After the rush, the population dwindled, but the community remembers its origins in an annual '62 Days Celebration in June. Canyon City is the county seat, with government offices and a variety of businesses. The community hall hosts events, and the Grantville Theater holds regular showings of newly released DVDs. The Grant County Historical Museum houses artifacts, documents and photographs that bring the county's history to life. In the heart of town, Sproul Park features a playground, picnic area, restrooms and a covered stage that is the site of summer concerts.

Explore Canyon City:

Canyon Mountain Trail is a hidden gem that provides incredible views of the John Day Valley. The 28-mile trail takes hikers in and out of the burn area from a 2015 wildfire, crossing several creeks and streams fed by snowmelt. To reach the trailhead, travel east 2 miles on County Road 52 from Canyon City and take a right on County Road 77 for about a quarter-mile. Then take another right on Forest Road 7700333 to the trailhead.

Seneca

Elevation: 4,666 • Population: 165

At an elevation of 4,666 feet, Seneca set the record for the coldest temperature ever recorded in Oregon — negative 54 degrees on Feb. 10, 1933 — earning the nickname "Oregon's Icebox." Homesteaders began moving into Bear Valley in the mountains of southern Grant County in the 1880s, but the arrival of the Edward Hines Lumber Co. established Seneca as a thriving logging town in the 1920s. Close to 200 people still call Seneca home, with local businesses offering food and fuel, and a new CyberMill with high-speed internet access. The community park, which features a baseball field, horseshoe pits, playground, picnic area and restrooms, is the site of the annual Seneca Oyster Feed in May, a tradition over 20 years strong that draws visitors from throughout Oregon and other states as well. With beautiful scenery and prime hunting grounds, Bear Valley is surrounded by abundant outdoor recreational opportunities in the Malheur National Forest. About 10 miles north of town is the Starr Ridge winter sports area, and about 5 miles south is the Retreat, Links and Spa at Silvies Valley Ranch.

Explore Seneca:

East of Seneca on Forest Road 16, the Malheur National Forest provides hiking, fishing, hunting, camping and sightseeing opportunities. Areas along Forest Roads 1619 and 15 are obsidian sources. Farther east in Logan Valley on the south side of the Strawberry Mountain Wilderness, vivid wildflowers paint the landscape in springtime, and wildlife is abundant year-round. To make a scenic loop around the wilderness, follow Forest Road 16 east from Seneca and turn north on County Road 62 to Prairie City, then take Highway 26 west to John Day.

Long Creek

Elevation: 3,754 • Population: 173

Nestled in a high valley of the Blue Mountains in northern Grant County, Long Creek has a small-town aesthetic but enough amenities to make travelers feel comfortable. Businesses offer food, fuel and other necessities, and the area is near a variety of recreational opportunities, including camping, hiking, biking and water activities. The Long Creek Historical Society is an active group dedicated to preserving and promoting the history of the area, including the neighboring communities of Fox, Hamilton and Monument. The society re-erected Fort Townsend, the Army post built in Long Creek in 1878, within the city and is now working to build a museum and interpretive center there to house historical photographs and artifacts that have been collected. A "Fort Townsend" sign on West Main Street leads to the future site. The fort was originally erected east of town during the 1878 Bannock and Paiute Indian War, and William "Billy" Townsend, a Civil War veteran, defended the installation from the approaching tribes. For more information about the historical society, call 541-421-3621 or visit cityoflongcreek.com/history.

Explore Long Creek :

Social Security Pond, about 4 miles west of town, is a tranquil spot for fishing or picnicking. The city park at Main and Allen streets features a basketball court, horseshoe pits, picnic area and playground.

PHOTO BY JINA CARNIGLIA





Grant Weed Control



***Something Growing and It Don't Look Good,
Who Ya Gonna Call?***

*Grant Weed Control for a comprehensive
consultation including:*

- *Plant Identification*
- *Herbicide Recommendations*
- *Treatment Options*
- *Bio-control Options*
- *Vegetative Management Planning*

Grant Weed Control 541-575-1554



Grant Soil and Water Conservation District



***Assisting Landowners with their Natural Resource
Needs Since 1956!***

The District Provides Services Related to:

- Agriculture/Civil Engineering
- Grant Writings
- Contracting/Project Management
- Conservation Reserve Enhancement Program Enrollment Assistance
- Mapping Services
- Land Management Consulting
- Geographic Information Systems



Kenneth H. Delano Agricultural Service Center
721 South Canyon Boulevard, John Day, Oregon 97845
Phone: (541) 575-0135 Website: www.granswcd.net



5284601-1

COMMUNITIES

Dale

Elevation: 2,917 • Population: N/A

In northern Grant County, near the border with Umatilla County, the small community of Dale lies just south of the 45th parallel on Highway 395. A store provides fuel and groceries as well as shuttles for people floating the North Fork of the John Day River. Nearby is the Bridge Creek Wildlife Area, where mountain bluebirds, larks, hawks and bald eagles can be seen and where 1,000 Rocky Mountain elk migrate in the winter.

Explore Dale:

South of Dale, a mineral hot springs is about all that remains in the ghost town of Ritter. For a small fee, travelers can unwind in the pool or mineral baths surrounded by the scenic beauty of the Middle Fork of the John Day River. Several rooms and campsites are also available. The water feels smooth due to its high alkalinity, close to a nine on the pH scale, which can be good for the skin. The resort is 10 miles west of Highway 395 on Ritter Road, which turns off near milepost 77B, about 13 miles south of Dale.

Granite

Elevation: 4,695 • Population: 32

In the northeastern corner of Grant County, Granite provides a break from civilization in the great outdoors. Travelers are more likely to encounter the resident wildlife than the human inhabitants, though many nonresidents visit for hunting, ATV riding, prospecting and snowmobiling in the Blue Mountains. The Historic Fremont Powerhouse was built in 1908 and piped water from Olive Lake to generate electric power. The plant shut down in 1967 and was donated to the Forest Service. Visitors today can still view the historic structure and can even stay in rental cabins on the grounds.

Explore Granite:

Nearby, visitors can trek into the North Fork John Day Wilderness. Olive Lake is a peaceful retreat a short drive west that offers opportunities for fishing, boating, swimming, hiking and camping.

Kimberly

Elevation: 1,828 • Population: N/A

At the western edge of Grant County, far from the frigid peaks of the Blue Mountains, the town of Kimberly was established at the confluence of the John Day River and its North Fork. Kimberly's low elevation provides a temperate Mediterranean climate with rich growing opportunities. A commercial orchard was established in the 1930s, and people today can still pick their own fruit at Thomas Orchards. Local businesses offer groceries and fuel, and the area features an abundance of scenery and recreational opportunities with river access.

Explore Kimberly:

The Sheep Rock Unit of the John Day Fossil Beds National Monument to the south provides beautiful views of geological formations, a variety of trails and historical artifacts. Bull Prairie Lake is about 24 miles from Kimberly, and a bit farther north is the Morrow & Grant County OHV Park, with more than 200 miles of trails for jeeps, quads, side-by-sides and dirt bikes.



551 W. Main, John Day • 541.575.1346

Wherever you travel in
GRANT COUNTY,
Les Schwab is there!

Tires • Wheels • Brakes • Batteries • Alignment • Suspension • Sudden Service

Sometimes the best solution is to
REST, RELAX & RECHARGE....



HOTEL PRAIRIE

112 Front St. Prairie City, OR

541-820-4800

www.hotelprairie.com

5281730-1

Ghost Towns

In its heyday, Grant County was filled with communities both minute and booming. As each industry came and went, the smaller of the towns gradually faded into history.

Austin and Bates

Near the headwaters of the Middle Fork John Day River

Austin was a lumber, sheep, cattle and mining town. Bates was founded by the Oregon Lumber Co. about a mile downriver. As the new mill went into operation, Bates grew and Austin shrank. Both towns' populations decreased with the decline of the Sumpter Valley Railroad line from Prairie City. A few residents still call Austin home. While all the mill structures and houses have been removed from Bates, the site has been resurrected as an Oregon State Parks campground.

Fox and Beech Creek

Northern Grant County, south of Long Creek

Fox was named after Fox Creek, a tributary of the North Fork John Day River. The creek was named for an incident involving the animal of the same name. The Fox Post Office was established in 1883 and discontinued in 2002. Several residents still call Fox home, and the small community has worked to restore the historic Fox Church, built in 1889 by early settlers of the area.

Galena and Susanville

Near the headwaters of the Middle Fork John Day River

Susanville was the original site of a mining town created from a gold mining camp. It was named after one of the original residents. In the early 1900s, the post office was moved to a new location, named Galena after a body of galena ore, and the town was renamed with it. Activities slowed after the 1940s.

Ritter


Northern Grant County, between Dale and Long Creek

Named after a minister who gave land for the post office, Ritter was known for its location near a mineral hot spring. A large, popular resort was associated with the hot springs and town. In the 20th century, the population dwindled, but the resort and mineral springs still offer respite for weary travelers.



PHOTO BY PEGGY MURPHY





Rocky Mtn Dispensary
27877 Apple Road
John Day, OR
541-575-4200



@rockymtndisp

Do not operate a vehicle or machinery under the influence of this drug
For use only by adults twenty-one years of age and older
Keep out of reach of children

Where the Frontier Meets Innovation

GRANT COUNTY, OR



Info@GrantCountyOregon.net



Did You Know?



Quality Healthcare Close to Home

WE PROVIDE CARE TO MEET YOUR EVERY NEED

- Emergency Services
- Home Health & Hospice
- Primary Care & Geriatric Care
- Birthing Center
- Wound Care Clinic
- Foot Clinic
- Care Center in Prairie City

WE ALSO PROVIDE

- Respiratory Therapy
- Infusion Therapy
- Transfusions
- Physical Therapy
- Occupational Therapy
- Speech Therapy
- Dietary/ Nutrition Services
- Dermatology

YOU CAN GET YOUR TESTS DONE HERE AT BLUE MOUNTAIN HOSPITAL

- X-Rays
- Labs
- CT Scan
- MRI
- 3-D Mammograms
- Ultrasounds
- Bone Density Scans
- Diagnostic Tests
- Stress Tests
- Echocardiograms

WE ARE YOUR MEDICAL HOME AWAY FROM HOME

- Recover close to home after having surgery or treatment at another medical center utilizing our Transitional Care.

WE PERFORM MANY SURGICAL PROCEDURES, INCLUDING

- Cataract Surgery
- Hernia Surgery
- Gallbladder Surgery
- Colonoscopy
- Upper Endoscopy

WE HAVE VISITING SPECIALISTS HERE ON A REGULAR BASIS

- Cardiology
- Ophthalmology
- Podiatry
- Orthopedic
- Neurosurgery
- Physical Medicine & Rehabilitation

Same-Day Appointments available at Strawberry Wilderness Community Clinic Monday - Friday for sudden non emergent symptoms. Call for an appointment: 541-575-0404

170 Ford Rd., John Day
541-575-1311

www.bluemountainhospital.org

